



Your control valve solution provider

KOSO **PARCOL**



KOSO PARCOL



DESIGN

Design and innovation are central to our business. For those items requiring tailored solutions our technical department takes care of the Client's requirements and develops the detailed engineering of the valves.



PRODUCTION

Due to the wide range of products and the stringent request of our Clients flexibility is a key factors. A particular care is therefore devoted to coordinate all activities connected with the production process: procurement, manufacturing, assembling, testing, delivery supported by a fully integrated ERP advanced software.

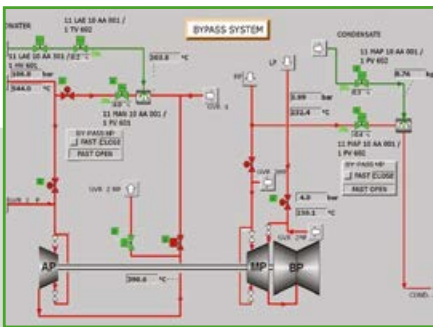


AFTER-SALES SERVICES

After-sales services are essential for our Clients and we are able to grant assistance both during commissioning and start-up as well as for the whole life of the valves in operation. We have decades' worth of performance data, coming as direct feedback from the plants, used to give a rapid-response spares service and to boost new technologically advanced solutions.

Koso Parco: your control valve solution provider

We are the Italy based company, founded in 1954 and belonging to Nihon Koso Co. Ltd - Japan, leader for control valves and steam desuperheating systems. We are a team of persons of high professionalism able to ensure the best services to the most demanding clients belonging to Engineering Procurement and Construction contractors and End-Users of industrial plants during the whole lifecycle of the valves, starting from initial request for quotation and continuing during the normal plant operation.

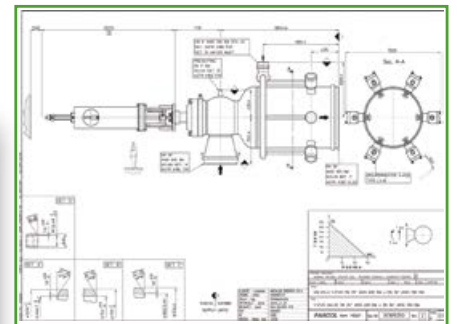


RFQ AND OFFER

Our Sales Engineers support the Client at offer stage to find the best technical and economical solutions. During this stage each valve is calculated, in terms of Cv and noise, and all possible critical phenomena such as corrosion, erosion, cavitation, flashing deeply analyzed.

ORDER MANAGEMENT

Once an order is started our dedicated team of Project Managers follows the work progress status from the launch of the job until the final shipment in conjunction with the expeditors and inspectors appointed by the Client.



DOCUMENT MANAGEMENT

Technical and quality documents such as drawings, quality plans, mechanical books, installation and maintenance manuals, certificates, etc. are critical both for the internal production process and for development of our Client's project. With a dedicated team we are able to grant their generation in line with all their needs.

Desalination Plants

MED (MULTI-EFFECT) • MSF (MULTISTAGE FLASH) PLANTS

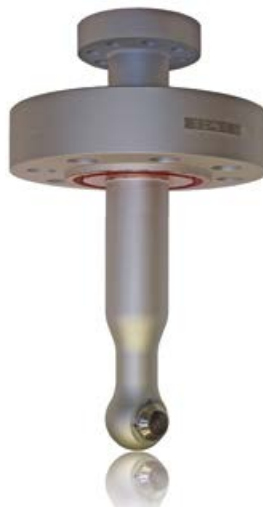


Solutions for:

- Brine Dp
- Brine recirculation
- Steam to brine heater
- Sea water make-up

Technical aspects:

high flowrates | corrosion | cavitation | noise emissions



product	BUTTERFLY CONTROL VALVE	DESUPERHEATER	DESUPERHEATER
series	1-2483	3-4000	1-4442 SPRAYSAT
size	8" - 80"	up to 6"	1"x 3" - 3"x 6"
rating	PN 6 -16	150 lbs - 1500 lbs	job rating
body	CC / SS / Duplex SS	CS / CrMo	CS / CrMo
industry	■	■ ■	■ ■

Power Generation

FOSSIL • NUCLEAR • GEOTHERMAL • BIOMASS • WASTE TO ENERGY • CSP (SOLAR)



Solutions for:

- Utility and Industrial Boilers*
- Heat Recovery Steam Generators (HRSG)*
- Steam Turbines*
- Gas Turbines*

Technical aspects:

noise emissions | vibrations | erosion | thermal stresses (cycling)



PRDS	CONTROL VALVE	CONTROL VALVE
1-5700	1-6962 VARISTEP	1-7000 TANDEM PLUG
up to 60"	3" - 16"	1" - 3"
job rating	up to 2500 lbs	up to 4500 lbs
CS / CrMo	CS / CrMo	CS / CrMo
		

Oil & Gas

OIL & GAS PRODUCTION • GAS PROCESSING • PETROCHEMICAL • REFINING



Solutions for:

- Compressor antisurge*
- Pump minimum recirculation flow*
- Gas to flare*
- Emergency steam vents*
- High pressure let down*
- Auxiliary power unit*

Technical aspects:

erosive and corrosive fluids | fugitive emissions (toxic or lethal) | cryogenic service



CONTROL VALVE

1-6940 VeGA

3/4" - 24"

150 lbs - 2500 lbs

CS / CrMo / SS / Duplex SS



CONTROL VALVE

1-9000 LIMIPHON

1" - 36"

up to 4500 lbs

CS / CrMo / SS / Duplex SS



CONTROL VALVE

1-6940 VeGA CRYO

3/4" - 24"

150 lbs -2500 lbs

SS



Ammonia - Urea Plants

CO2 AND AMMONIA STRIPPING TECHNOLOGY



Solutions for:

- Stripper letdown*
- NH3 pump minimum recirculation flow*
- Carbamate pump minimum recirculation flow*
- CO2 to reactor*
- Reactor vent*

Technical aspects:

high pressures | corrosive fluids | crystallizing fluids



THREE WAY CONTROL VALVE

1-0003

up to 12"

150 lbs - 600 lbs

CS / SS / Duplex



SAFETY RELIEF VALVE

3-5403 VSU

1" x 2" - 10" x 12"

150 lbs - 2500 lbs

CS / CrMo / SS / Duplex



CONTROL VALVE

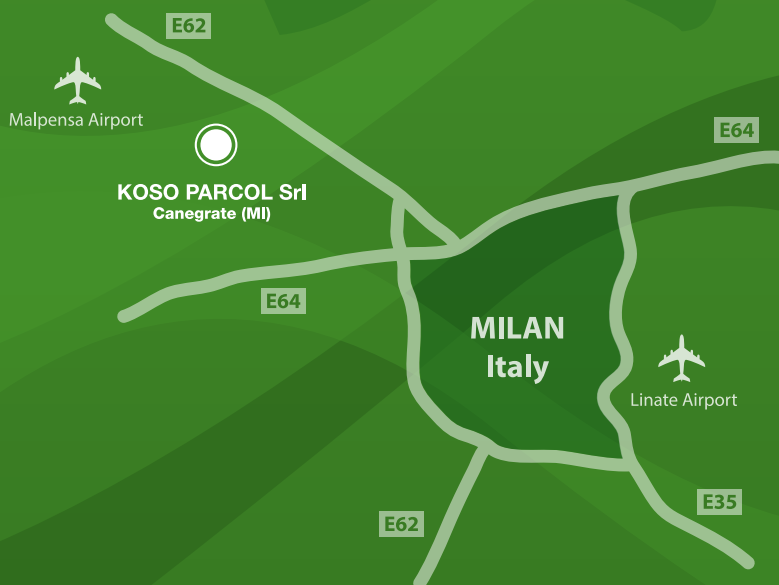
1-4800

3/4" - 12"

PN 160 - 320 - 420

SS / Duplex





KOSO PARCOL

Koso Parcol Srl · Italy · 20010 Canegrate (MI) · Via Isonzo 2 · Tel. +39 0331 413111 · Fax +39 0331 404215 · sales@parcol.com

www.parcol.com