

QUALITY IS
MORE THAN WHAT
MEETS THE EYE.

EXPERIENCE
IN EVERY VALVE



MILWAUKEE VALVE

OUR BEST WORK IS [UNDERCOVER]

INSULATOR/MS®. YOUR HIDDEN LINE OF DEFENSE AGAINST CONDENSATION DAMAGE.

Standard insulation leaves a gap at valve sites that can lead to condensation, mildew and system contamination. So protect your installations with INSULATOR/MS® ball valve handles that cover exposed valve parts, close gaps and add a layer of insulating power.

INSULATOR also reduces service time. Its reliable memory stop adjusts with a few quick turns of a hex wrench, instead of needing disassembly. Specifying multiple projects is easy, too, with INSULATOR's versatile +15°F to +250°F operating range. The handles are tested and certified to UL 2043 and is UL listed for installation in air-handling plenums. Uncover more product info at MilwaukeeValve.com, HammondValve.com and UltraPureNoLeadValves.com.



16550 West Stratton Drive, New Berlin, WI 53151
Phone 262-432-2700 | Fax 262-432-2701
www.MilwaukeeValve.com | www.HammondValve.com
www.UltraPureNoLeadValves.com

© 2019, Milwaukee Valve Company
INSULATOR/MS, UltraPure, Hammond Valve and Milwaukee Valve logos are
all registered trademarks of Milwaukee Valve Company.



CONTENTS

BALL VALVES	PAGE 4-10
BUTTERFLY VALVES	PAGE 11-13
- C Series Commercial Construction	
- M Series Standard Industrial	
- UltraPure® Commercial Construction For Potable Water	
- Grooved Series	
- H Series High-Pressure	
- HP Series High-Performance	
- Bronze Butterball® Butterfly	
ACTUATION	PAGE 14-15
BRONZE VALVES	PAGE 16-20
- Gate, Page 16-17	
- Globe & Angle, Page 18-19	
- Check, Page 19-20	
CAST STEEL VALVES	PAGE 21
- Gate	
- Globe	
- Check	
IRON VALVES	PAGE 22-23
- Gate & Clip-Gate, Page 21	
- Globe, Page 21	
- Check Valves, Page 22	
FIRE PROTECTION VALVES	PAGE 24-25
ULTRAPURE® LEAD-FREE VALVES FOR POTABLE WATER SERVICE ..	PAGE 26-29
TANK AND TRAILER VALVES	PAGE 32-33
SAMPLER VALVES	PAGE 34
FLOW CONTROL, MEDICAL GAS AND SPECIALTY VALVES	PAGE 34
ENGINEERING & DESIGN CAPABILITIES	PAGE 35

Rev. 04/22

The information presented on this sheet is correct at time of publication. Milwaukee Valve reserves the right to change design and/or materials without notice. For our Installation, Operation and Maintenance Manual and the most current product information go to www.milwaukeevalve.com. State of California Prop 65 ⚠ WARNING: Cancer and Reproductive Harm. For more information visit www.p65warnings.ca.gov.

BALL VALVES



BA-100TIH



BA-100 P2



BA-150H

2-PIECE BRONZE

Standard Port

BA-100 / BA-100S

600 WOG 150 SWP, MSS SP-110, Threaded, BA-100S with Stainless Steel Ball and Stem 1/4" thru 3"

BA-100ELD

125 psig, MSS SP-110, Latch Lock Handle, Threaded with Exhaust Port 1/4" thru 2"

BA-100M

600 WOG 150 SWP, MSS SP-110, Male x Female 1/4" thru 2"

BA-100 P2 / BA-100S P2

200 psig @ 250°F, MSS SP-110, Press X Press, BA-100S P2 with Stainless Steel Ball and Stem 1/2" thru 2"

BA-150 / BA-150S

600 WOG 150 SWP, MSS SP-110, Solder, BA-150S with Stainless Steel Ball & Stem 3/8" thru 3"

Full Port

BA-100H

600 WOG, MSS SP-110, Threaded With Hose, Cap and Chain 1/2" and 3/4"

BA-150H

600 WOG, MSS SP-110, Solder With Hose, Cap and Chain 1/2" and 3/4"

BA-100H P1 / BA-100SH P1

200 psig @ 250°F, MSS SP-110, Press X Hose, BA-100SH P1 with Stainless Steel Ball & Stem 1/2" and 3/4"

Options/Accessories

BA-100/150 / UPBA-100/150
INSULATOR Handle (TIH)
Oval Handle (OH)
Locking Oval Handle (LO)
Stainless-Steel Handle (SH)
Tee Handle (TH)
Locking Handle (LD)
Extension Handle (XH)
Extension Handle w/Memory Stop (XM)
Memory Stop (MS)
Chain Lever (CL)



BA-450



UPBA-100 P2 XH



BA-100 P2 TIH

Options/Accessories

BA-100/150 / UPBA-100/150
BA-400/450 / UPBA-400/450
INSULATOR Handle (TIH)
Oval Handle (OH)
Locking Oval Handle (LO)
Stainless-Steel Handle (SH)
Tee Handle (TH)
Locking Handle (LD)
Extension Handle (XH)
Extension Handle w/Memory Stop (XM)
Memory Stop (MS)
Chain Lever (CL)

continued

2-PIECE BRONZE

Full Port

BA-400 / BA-400S

600 WOG 150 SWP, MSS SP-110, Threaded, BA-400S with Stainless Steel Ball & Stem 1/4" thru 2"

BA-400 P2 / BA-400S P2

200 psig @ 250°F, MSS SP-110, Press X Press, BA-400S with Stainless Steel Ball & Stem 1/2" thru 2"

BA-400S3

600 WOG, 250 SWP, MSS SP-110, Stainless Steel Ball & Stem, Threaded, Steam Seats 1/2" thru 2"

BA-450 / BA-450S

600 WOG, 150 SWP, MSS SP-110, Solder, BA-450S with Stainless Steel Ball & Stem 3/8" thru 2"

2-PIECE BRONZE LEAD-FREE BRONZE BALL VALVES FOR POTABLE WATER SERVICE*



Standard Port

UPBA-100 / UPBA-100S

600 WOG, MSS SP-110, Threaded, UPBA-100S with Stainless Steel Ball & Stem 1/4" thru 3"

UPBA-100 P2 / UPBA-100S P2

200 psig @ 250°F, MSS SP-110, Press X Press, UPBA-100S with Stainless Steel Ball and Stem 1/2" thru 3"



UPBA-100H



UPBA-400 P2 TIH



UPBA-450S

continued
2-PIECE 
BRONZE LEAD-FREE
BRONZE BALL VALVES
FOR POTABLE
WATER SERVICE*

Standard Port

UPBA-150 / UPBA-150S

600 WOG, MSS SP-110, Solder,
 UPBA-150S with Stainless Steel
 Ball & Stem
 3/8" thru 3"

Full Port

UPBA-100H

600 WOG, MSS SP-110, Threaded
 With Hose, Cap and Chain
 1/2" and 3/4"

UPBA-150H

600 WOG, Solder with Hose,
 Cap and Chain
 1/2" and 3/4"

UPBA-400 / UPBA-400S

600 WOG, MSS SP-110, Threaded,
 UPBA-400S with Stainless Steel
 Ball & Stem
 1/4" thru 2"

UPBA-100H P1

200 psig @ 250°F, MSS SP-110,
 Press X Hose
 1/2" and 3/4"

UPBA-400 P2 / UPBA-400S P2

200 psig @ 250°F, MSS SP-110,
 Press X Press, UPBA-400S with
 Stainless Steel Ball and Stem
 1/2" thru 2"

UPBA-450 / UPBA-450S

600 WOG, MSS SP-110, Solder,
 UPBA-450S with Stainless Steel
 Ball & Stem
 3/8" thru 2"

Options/Accessories

- BA-100/150 / UPBA-100/150
- BA-400/450 / UPBA-400/450
- INSULATOR Handle (TIH)
- Oval Handle (OH)
- Locking Oval Handle (LO)
- Stainless-Steel Handle (SH)
- Tee Handle (TH)
- Locking Handle (LD)
- Extension Handle (XH)
- Extension Handle w/Memory Stop (XM)
- Memory Stop (MS)
- Chain Lever (CL)



BA-200



BA-475B



BA-480S

2-PIECE FORGED
BRASS

Standard Port

BA-200

400 WOG 150 SWP, Threaded
 1/4" thru 4"

BA-250

400 WOG 150 SWP, Solder
 3/8" thru 3"

Full Port

BA-475B

600 WOG (1/4" thru 3"), 400 WOG
 (4"), CSA/UL/FM/CGA Approved
 to 2", Threaded
 1/4" thru 4"

BA-485B

600 WOG (1/2" thru 3"), 400 WOG
 (4"), Heavy Pattern, Solder
 1/2" thru 4"

BA-480B / BA-480S

200 psig @ 250°F, Press X
 Press, BA-480S with
 Stainless Steel Ball & Stem
 1/2" thru 3"

BA-490B / BA-490S

200 psig @ 250°F, Press X
 Threaded, BA-490S with
 Stainless Steel Ball & Stem
 1/2" thru 2"

BA-480BH / BA-480SH

200 psig @ 250°F, Press X Hose,
 BA-480SH with Stainless Steel
 Ball & Stem,
 1/2" thru 3/4"

BA-481B

200 psig @ 250°F, Press X
 Press, Extension Stem with
 Memory stop,
 1/2" thru 3"

BA-491B

200 psig @ 250°F, Press X
 Threaded, Extension stem with
 Memory Stop,
 1/2" thru 2"

Options/Accessories

- BA-200/250,
- BA-475B/485B / UPBA-475B/485B
- BA-480B/490B / UPBA-480B/490B
- INSULATOR Handle (TIH)
- (Except BA-200/250)
- Oval Handle (OH)
- Stainless-Steel Handle (SH)
- Tee Handle (TH)
- Extension Handle (XH)
- Extension Handle with Memory Stop (XM)
- Memory Stop (MS)

* Meets Senate law S3874. IAPMO tested and certified to NSF/ANSI 372 for "lead-free" compliance.

BALL VALVES



UPBA-475B



UPBA-480B



UPBA-481B

Options/Accessories

BA-475B/485B / UPBA-475B/485B
 BA-480B/490B / UPBA-480B/490B
 INSULATOR Handle (TIH)
 (BA-480B/BA-490B only)
 Oval Handle (OH)
 Stainless-Steel Handle (SH)
 Tee Handle (TH)
 Extension Handle (XH)
 Extension Handle with Memory Stop (XM)
 Memory Stop (MS)

2-PIECE LEAD-FREE FORGED BRASS BALL VALVES FOR POTABLE WATER SERVICE

Full Port

UPBA-475B *
 600 WOG (1/4" thru 2") 400 WOG (2-1/2" thru 3") MSS SP-110, UL/CSA Rated to 2", Threaded 1/4" thru 3"

UPBA-485B *
 600 WOG (1/2" thru 2") 400 WOG (2-1/2" thru 3"), MSS SP-110, Solder 1/2" thru 3"

UPBA-480B / UPBA-480S*
 200 psig @ 250°F, MSS SP-110, Press X Press, UPBA-480S with Stainless Steel Ball and Stem 1/2" thru 4"

UPBA-480BH / UPBA-480SH *
 200 PSIG @ 250°F, Press X Hose, BA-480SH with Stainless Steel Ball & Stem, 1/2" and 3/4"

UPBA-481B / UPBA-481S *
 200 psig @ 250°F, MSS SP-110, Press X Press, Extension Stem With Memory Stop, UPBA-481S with Stainless Steel Ball and Stem 1/2" thru 3"

UPBA-490B / UPBA-490S *
 200 psig @ 250°F, MSS SP-110, Press X Threaded, UPBA-490S with Stainless Steel Ball and Stem 1/2" thru 2"

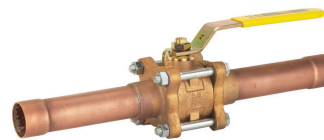
UPBA-491B / UPBA-491S *
 200 psig @ 250°F, MSS SP-110, Press X Threaded, Extension Stem With Memory Stop, UPBA-491S with Stainless Steel Ball and Stem 1/2" thru 2"



BA-500



BA-300TIH



BA-350TE

Options/Accessories

BA-300/350 / UPBA-300/350
 INSULATOR Handle (TIH)
 Oval Handle (OH)
 Locking Oval Handle (LO)
 Stainless-Steel Handle (SH)
 Tee Handle (TH)
 Locking Handle (LD)
 Extension Handle (XH)
 Extension Handle w/Memory Stop (XM)
 Memory Stop (MS)
 Chain Lever (CL)

2-PIECE BRASS CIRCULATOR-FLANGE

BA-500

600 WOG, 150 SWP, Full Port, Sold in Pkg. of 2, Threaded 3/4" thru 1-1/4"

BA-550

600 WOG, 150 SWP, Full Port, Sold in Pkg. of 2, Solder 3/4" thru 1-1/4"

3-PIECE BRONZE BALL VALVES

Full Port

BA-300 / BA-300S

600 WOG, 150 SWP, MSS SP-110, Threaded, BA-300S with Stainless Steel Ball & Stem 1/4" thru 3" *

BA-300SB / BA-300SBS

600 WOG, 150 SWP Silbrazed, BA-300SBS with Stainless Steel Ball & Stem 3/4" thru 2"

BA-350 / BA-350S

600 WOG, 150 SWP, MSS SP-110, Solder, BA-350S with Stainless Steel Ball and Stem 3/8" thru 3"

BA-300 P2 / BA-300S P2

200 psig @ 250°F, MSS SP-110, Press X Press, BA-300S P2 with Stainless Steel Ball and Stem 1/2" thru 2"

BA-350TE / BA-350STE **

600 WOG, 150 SWP, Solder, BA-350STE with Stainless Steel Ball and Stem, Tube End 1/2" thru 3"



UPBA-350

3-PIECE **Ultra Pure** LEAD-FREE BRONZE BALL VALVES FOR POTABLE WATER



Full Port

UPBA-300 / UPBA-300S

600 WOG, MSS SP-110, Threaded,
UPBA-300S with Stainless Steel
Ball & Stem
1/4" thru 3"

UPBA-350 / UPBA-350S

600 WOG, MSS SP-110, Solder,
UPBA-350S with Stainless Steel
Ball & Stem
3/8" thru 3"

UPBA-300 P2 / UPBA-300S P2

200 psig @ 250°F, MSS SP-110,
Press X Press, UPBA-300S P2
with Stainless Steel Ball & Stem
1/2" thru 2"

Options/Accessories

BA-300/350 / UPBA-300/350

INSULATOR Handle (TIH)

Oval Handle (OH)

Locking Oval Handle (LO)

Stainless-Steel Handle (SH)

Tee Handle (TH)

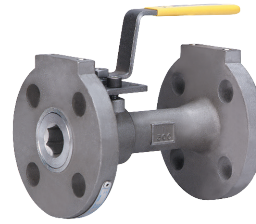
Locking Handle (LD)

Extension Handle (XH)

Extension Handle w/Memory Stop (XM)

Memory Stop (MS)

Chain Lever (CL)



F90SS300R-N1



F90CS150R-N1



F91CS150R-N1

Options/Accessories

F90/91

Stainless Oval Handle (OS)

Carbon Oval Handle (OH)

Extended Handle (XH)

Extended Locking Handle (XLH)

Gear Operator (GO)

Pneumatic Actuator

Electric Actuator

Assemble Dry (AD)

Chlorine Cleaned (CC)

Oxygen Cleaned (OC)

Grounded Ball (GB)

Vented Ball (VB)

UNIBODY, FLANGED-END

Standard Port

F90CS150R-N1

Class 150, TEFLON[®] NXT-75
Seats, Carbon Steel Body,
Stainless Steel Ball & Stem,
Actuator Mounting Pads
1/2" thru 6"

F90CS300R-N1

Class 300, TEFLON[®] NXT-75
Seats, Carbon Steel Body,
Stainless Steel Ball & Stem,
Actuator Mounting Pads
1/2" thru 6"

F90SS150R-N1

Class 150, TEFLON[®] NXT-75
Seats, Stainless Steel Body,
Stainless Steel Ball & Stem,
Actuator Mounting Pads
1/2" thru 6"

F90SS300R-N1

Class 300, TEFLON[®] NXT-75
Seats, Stainless Steel Body,
Stainless Steel Ball & Stem,
Actuator Mounting Pads
1/2" thru 6"

UNIBODY, FLANGED-END, FIRE-SAFE

Standard Port

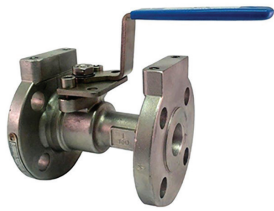
F91CS150R-N1

Class 150, TEFLON[®] NXT-75
Seats, Carbon Steel Body,
Stainless Steel Ball & Stem,
Fire-Safe to API 607, Actuator
Mounting Pads
1/2" thru 6"

F91CS300R-N1

Class 300, TEFLON[®] NXT-75
Seats, Carbon Steel Body,
Stainless Steel Ball & Stem,
Fire-Safe to API 607, Actuator
Mounting Pads
1/2" thru 6"

BALL VALVES



F91SS150R-N1



10SSOD-02-LL

continued UNIBODY, FLANGED- END, FIRE-SAFE

Standard Port

F91SS150R-N1

Class 150, TEFLON[®] NXT-75 Seats, Stainless Steel Body, Stainless Steel Ball & Stem, Fire-Safe to API 607, Actuator Mounting Pads
1/2" thru 6"

F91SS300R-N1

Class 300, TEFLON[®] NXT-75 Seats, Stainless Steel Body, Stainless Steel Ball & Stem, Fire-Safe to API 607, Actuator Mounting Pads
1/2" thru 6"

UNIBODY, THREADED, FIRE-SAFE

Reduced Port

10CSOD-02-LL

2000 WOG, Carbon Steel Body, Stainless Steel Ball & Stem, RPTFE Seats, Fire-Safe to API 607, Threaded
1/4" thru 2"

10SSOD-02-LL

2000 WOG, Stainless Steel Body, Stainless Steel Ball & Stem, RPTFE Seats, Fire-Safe to API 607, Threaded
1/4" thru 2"

Options/Accessories

F91

Stainless Oval Handle (OS)
Carbon Oval Handle (OH)
Extended Handle (XH)
Extended Locking Handle (XLH)
Gear Operator (GO)
Pneumatic Actuator
Electric Actuator
Assemble Dry (AD)
Chlorine Cleaned (CC)
Oxygen Cleaned (OC)
Grounded Ball (GB)
Vented Ball (VB)



F201CSN2



F201SSN2



BA3WDSLH

Options/Accessories

F20

Lever Handle (2)
Gear Operator (3)
Pneumatic Actuator
Electric Actuator
Assemble Dry (A)
Chlorine Cleaned (C)
Oxygen Cleaned (O)
Vented Ball (V)
Flat-Faced Flange (F)
PTFE Packing (T)

2-PIECE, FLANGED- END, FIRE-SAFE

F201CSN2

Class 150, TEFLON[®] NXT-75 Seats, Carbon Steel Body, Stainless Steel Ball & Stem, Full Port, Live Loaded Graphite Packing, Actuator Mounting Pads, Fire-Safe to API 607
1" thru 12"

F203CSN2

Class 300, TEFLON[®] NXT-75 Seats, Carbon Steel Body, Stainless Steel Ball & Stem, Full Port, Live Loaded Graphite Packing, Actuator Mounting Pads, Fire-Safe to API 607
1" thru 12"

F201SSN2

Class 150, TEFLON[®] NXT-75 Seats, Stainless Steel Body, Stainless Steel Ball & Stem, Full Port, Live Loaded Graphite Packing, Actuator Mounting Pads, Fire-Safe to API 607
1" thru 12"

F203SSN2

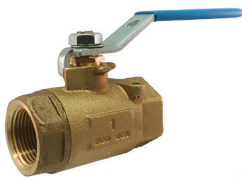
Class 300, TEFLON[®] NXT-75 Seats, Stainless Steel Body, Stainless Steel Ball & Stem, Full Port, Live Loaded Graphite Packing, Actuator Mounting Pads, Fire-Safe to API 607
1" thru 12"

DIVERTER VALVE

Standard Port

BA3WDSLH

1000 WOG, Stainless Steel Body, Stainless Steel Ball & Stem, RPTFE Seats, 3-Way Port
Diverter, Threaded Ends
1/4" thru 2"



20BSOR-02



20SSOR-N1



BA-260

Options/Accessories

20 series

- Stainless Oval Handle (OS)
- Stainless Latch Lock Handle (LL)
- Stainless-Steel Spring-Loaded Oval Handle (LO)
- Extended Handle (XH)
- Stainless Spring Latch-Lock Handle (LS)
- Pneumatic Actuator
- Electric Actuator
- Assemble Dry (AD)
- Grounded Ball (GB)
- Grounded Stem (GS)
- Vented Ball (VB)

2-PIECE, THREADED

Standard Port

20BSOR-02

600 WOG, Bronze Body, Stainless Steel Ball & Stem, RPTFE Seats, Actuator Mounting Pads, Threaded 1/4" thru 2"

20BBOR-02

600 WOG, Bronze Body, Chrome Plated Ball, Bronze Stem, RPTFE Seats, Actuator Mounting Pads, Threaded 1/4" thru 2"

20CSOR-N1

Carbon Steel Body, Stainless Steel Ball & Stem, TEFLON® NXT-75 Seats, Actuator Mounting Pads, Threaded 2000 WOG 1/4" thru 1", 1500 WOG 1-1/4" thru 2"

20SSOR-N1

Stainless Steel Body, Stainless Steel Ball & Stem, TEFLON® NXT-75 Seats, Actuator Mounting Pads, Threaded 2000 WOG 1/4" thru 1", 1500 WOG 1-1/4" thru 2"

Full Port

BA-260

1000 WOG, Stainless Steel Body and Ball, RPTFE Seats, Locking Handle, Threaded 1/4" thru 3"



41CSOF-02-LL



41SSOF-02-LL



22SSOR-N1

Options/Accessories

22 series

- Stainless Oval Handle (OS)
- Stainless Latch Lock Handle (LL)
- Stainless-Steel Spring-Loaded Oval Handle (LO)
- Extended Handle (XH)
- Stainless Spring Latch-Lock Handle (LS)
- Pneumatic Actuator
- Electric Actuator
- Assemble Dry (AD)
- Grounded Ball (GB)
- Grounded Stem (GS)
- Vented Ball (VB)

41 Series

- Stainless Handle (SH)
- Stainless Oval Handle (OS)
- Stainless Latch Lock Handle (LL)
- Carbon-Steel Oval Handle (OH)
- Locking Spring-Return Stainless-Steel Oval Handle (LO)
- Extended Handle (XH)
- Stainless Spring Latch Lock Handle (LS)

HIGH-PRESSURE, SEAL-WELDED, FIRE-SAFE

Full Port

41CSOF-02-LL

Carbon Steel Body, Stainless Steel Ball & Stem, Available with Socket-Weld, Extended Butt-Weld Ends and 3,000-lb. Configuration (Consult Factory), Actuator Mounting Pads, Threaded Class 900 1/2" thru 1-1/2" Class 600 2"

41SSOF-02-LL

Stainless Steel Body, Stainless Steel Ball & Stem, Available with Socket-Weld, Extended Butt-Weld Ends and 3,000-lb. Configuration (Consult Factory), Actuator Mounting Pads, Threaded Class 900 1/2" thru 1-1/2" Class 600 2"

2-PIECE, SEAL-WELDED

Standard Port

22CSOR-N1

Carbon Steel Body, Stainless Steel Ball & Stem, TEFLON® NXT-75 Seats, Actuator Mounting Pads, Threaded 2000 WOG 1/4" thru 1" 1500 WOG 1-1/4" thru 2"

22SSOR-N1

Stainless Steel Body, Stainless Steel Ball & Stem, TEFLON® NXT-75 Seats, Actuator Mounting Pads, Threaded 2000 WOG 1/4" thru 1" 1500 WOG 1-1/4" thru 2"

BALL VALVES



30SSOF-02



30BSOF-02



30CSOF-02



30SSOF-02-LO

Options/Accessories

30 Series

Stainless Latch Lock Handle (LL)
 Locking Stainless-Steel Oval Handle (LO)
 Stainless-Steel Latch Lock Spring-Loaded Handle (LS)
 Stainless-Steel Oval Handle (OS)
 Extended Handle 2" (XH)
 Extended Handle 4 1/2" (XLH)
 Extended Handle (XH)
 Pneumatic Actuator
 Electric Actuator
 Assemble Dry (AD)
 Grounded Ball (GB)
 Grounded Stem (GS)
 Vented Ball (VB)

3-PIECE, THREADED

Full Port

30BBOF-02

600 WOG, Bronze Body, Chrome Plated Ball & Stem, RPTFE Seats, PTFE V-Ring Packing, Threaded, Available with Solder, Actuator Mounting Pads 1/4" thru 2"

30BSOF-02

600 WOG, Bronze Body, Stainless Steel Ball & Stem, RPTFE Seats, PTFE V-Ring Packing, Actuator Mounting Pads, Threaded, Available with Solder 1/4" thru 2"

30CSOF-02

1000 WOG, Carbon Steel Body, Stainless Steel Ball & Stem, RPTFE Seats, PTFE V-Ring Packing, Actuator Mounting Pads, Threaded, Available with Socket-Weld 1/4" thru 2"

30SSOF-02

1000 WOG, Stainless Steel Body, Stainless Steel Ball & Stem, RPTFE Seats, PTFE V-Ring Packing, Actuator Mounting Pads, Threaded, Available with Socket-Weld 1/4" thru 2"



35RCSO-LL



35RSSO-LL

3-PIECE, ENCLOSED-BOLT, FIRE-SAFE

Standard Port

35RCSO-LL

2000 WOG, Carbon Steel Body, Stainless Steel Ball & Stem, TEFLON® NXT-75 Seats, Fire-Safe to API 607, Live Loaded Graphite Packing, Actuator Mounting Pads, Threaded, Available with Socket-Weld 1/4" thru 2"

35RSSO-LL

2000 WOG, Stainless Steel Body, Stainless Steel Ball & Stem, Live Loaded Flexible Graphite Packing, TEFLON® NXT-75 Seats, Fire-Safe to API 607, Actuator Mounting Pads, Threaded, Available with Socket-Weld 1/4" thru 2"

Full Port

35FCSO-LL

2000 WOG, Carbon Steel Body, Stainless Steel Ball & Stem, TEFLON® NXT-75 Seats, Fire-Safe to API 607, Live Loaded Graphite Packing, Actuator Mounting Pads, Threaded, Available with Socket-Weld 1/4" thru 2"

35FSSO-LL

2000 WOG, Stainless Steel Body, Stainless Steel Ball & Stem, TEFLON® NXT-75 Seats, Fire-Safe to API 607, Live Loaded Graphite Packing, Actuator Mounting Pads, Threaded, Available with Socket-Weld 1/4" thru 2"

Options/Accessories

35 series

Latch Lock Handle (LL)
 Locking Stainless-Steel Oval (LO)
 Extended Handle (XH)
 Pneumatic Actuator
 Electric Actuator
 Assemble Dry (A)
 Chlorine Cleaned (Stainless Only) (C)
 Oxygen Cleaned (O)

BUTTERFLY VALVES



CL323E

C SERIES – COMMERCIAL BUTTERFLY

Concentric valve to MSS SP-67,
Available in lug or wafer body.
CL Series IAPMO tested and
certified against NSF/ANSI 372
for lead-free* compliance.

Body: Cast Iron ASTM A126
Class B

Disc: AlBr (Aluminum Bronze)

Stem: 416 Stainless Steel

Liner: EPDM

2" thru 12" rated at 200 WOG

14" thru 48" rated at 150 WOG

These valves are based on our
M Series, but intended for
commercial applications in
HVAC and similar systems.

The valves feature a
phenolic-backed rubber seat
with optimized disc and stem
design for reliable sealing, low
torque, and long life. C Series
valves from 2" thru 12" are
approved by the U.S. Coast
Guard for Category A service.
Lug butterfly valves 2" thru 12"
are bi-directional dead-end
service to 200 psig max. Valves
14" thru 24" are rated for
uni-directional dead-end service
to 150 psig. The valves are
available with 10-position
locking-lever handles (up to
12 inch) and gear operators.



CW323E



MW323E

M SERIES – INDUSTRIAL BUTTERFLY*

Concentric valve to MSS SP-67,
Available in lug or wafer body.
Disc: Ni-plated Ductile Iron, AlBr,
or Stainless Steel, nylon and
epoxy-coated optional.

Stem: 416 or 316 Stainless Steel.

Liner: EPDM, Buna, FDA
Neoprene, PTFE, Hypalon, and
many other options.

Body: Cast iron ASTM A126
Class B or Ductile Iron ASTM
A536 65-45-12

2" thru 12" rated at 200 WOG

14" thru 48" rated at 150 WOG

These valves feature a
phenolic-backed rubber seat with
optimized disc and stem design
for reliable sealing, low torque,
and long life. 2" thru 12" are
approved by the U.S. Coast
Guard for Category A service.
Lug butterfly valves 2" thru 12"
are bi-directional dead-end
service to 200 psig max. BUNA
and EPDM only. All others 150
psig uni-directional field
repairable. Valves 14" thru 24"
rated for uni-directional
dead-end service to 150 psig.
The valves are available with
on-board actuation direct from
the factory, 10 position locking
lever handles (up to 12 inch),
gear operators, or other options
– consult the factory.



ML323E



ML223E

• Available in Low Lead
ML133E/233E/333E
2" thru 12"

ML153E/333E
14" thru 24"

BUTTERFLY VALVES



ML133E/233E/333E



LEAD-FREE COMMERCIAL BUTTERFLY

ML133E/233E/333E

Cast Iron Body, Lug Style, Aluminum Bronze Disc, EPDM Liner, Bi-Directional Dead-End Service 200 psig Max, IAPMO Tested and certified against NSF/ANSI 372 for "Lead-free" compliance. 2" thru 12"

ML133E/333E

Cast Iron Body, Lug Style, Aluminum Bronze Disc, EPDM Liner, Bi-Directional Dead-End Service 200 psig Max 2" thru 12", Uni-Directional Dead-End Service 150 psig Max, 14" thru 24", IAPMO Tested and certified against NSF/ANSI 372 for "Lead-free" compliance.

CL Series

Cast Iron Body, Lug Style, Aluminum Bronze Disc, EPDM Liner, Bi-Directional Dead-End Service 200 psig Max 2" thru 12", Uni-Directional Dead-End Service 150 psig Max, 14" thru 24", IAPMO Tested and certified against NSF/ANSI 372 for "Lead-free" compliance.



CL323E



HP1LCS WITH LEVER HANDLE



HP1LCS WITH GEAR OPERATOR



HP1LSS WITH GEAR OPERATOR

HP SERIES HIGH PERFORMANCE BUTTERFLY

Double offset valve designed to MSS SP-68, ASME B16.34, and API 609, Category B. Available in lug or wafer body, ANSI Class 150 and 300 in sizes 2-1/2" thru 36"

Body: A216 WCB carbon steel or ASTM A351 CF8M

Stainless Steel

Disc: ASTM A351 CF8M

Stainless Steel

Stem: 17-4PH or 316

Stainless Steel

Seats: RTFE standard, Virgin PTFE, UHMWPE and other options.

These valves feature a double offset seat and disc design for superior sealing with no leakage and minimal seat contact and wear. The valves are available with on-board actuation direct from the factory, 10 position locking lever handles (up to 8 inch), gear operators on all valves, for other actuation options or accessories, consult the factory.



HP1LSS4212/HP3LSS4212/

HP1LLSS4213/HP3LSS4213

Stainless Steel Body, Lug Style, Stainless Steel Disc, RPTE

Seat, bi-directional dead-end service and double offset design. ANSI Class 150 and 300

available in sizes 2 1/2" - 24". Certified by IAPMO R&T to NSF/ANSI 61 and NSF/ANSI 372 for low lead requirements.



HL123E



HL323E



UPGG-245E

H SERIES – HIGH-PRESSURE INDUSTRIAL BUTTERFLY

Concentric valve to MSS SP-67,
Available in lug or wafer body.
Body: Ductile iron ASTM A536
65-45-12

Disc: Ni Plated DI, AlBr, or
Stainless Steel.

Stem: 416 or 316 Stainless Steel
Liner: EPDM, Buna, Viton.

2" thru 12" rated at 250 WOG
14" thru 24" rated at 200 WOG

The H Series is tested and rated
for higher-pressure services.
H Series Valves from 2" thru 12"
are approved by the U.S. Coast
Guard for Category A service.
Lug butterfly valves 2" thru 12"
are uni-directional dead-end
service to 200 psig max. BUNA
and EPDM only. Valves 14" thru
24" are rated for uni-directional
dead end service to 150 psig.

UPGG-245E

Polyamide Coated Ductile Iron
Grooved End Butterfly, 300 psi,
designed to MS SP-67
Extended Neck, Elastomer
Encapsulated Disc
2" thru 10"



BB2-100



BB2-350

BRONZE BUTTERBALL® BUTTERFLY

BB2-100

175 psig, Threaded
1/4" thru 2" (1/2" thru 2" UL/CSA)

BB2-350

175 psig, Solder
3/8" thru 2"

BB1-10A0

175 psig, Threaded, Actuator
Mounting Pads
1" thru 2"



35 SERIES BALL VALVE WITH PNEUMATIC ACTUATOR



F20 SERIES BALL VALVE WITH PNEUMATIC ACTUATOR WITH LIMIT SWITCH

PNEUMATIC ACTUATION

2-Piece Ball Valves

Available on Threaded-End Valves. Available on Bronze, Carbon-Steel and Stainless-Steel Valves. Available on 1/2" thru 2" Valves.

3-Piece Ball Valves

Available on Threaded-End and Socket-Weld-End Valves. Available on Bronze, Carbon-Steel and Stainless-Steel Valves. Available on 1/2" thru 2" Valves.

Flanged-End Ball Valves

Available on 150 and 300 lbs. Class Valves. Available on 1/2" thru 12" Valves.

PNEUMATIC BALL VALVE PACKAGE

2-Piece Full Port Stainless Steel Ball Valve

with stainless ball and stem. 1000 psig rated @ 100° F Temperature Range: -20° to 450° F 50 psi SWP for on/off service Factory Assembled and tested Available on 1/4" to 3" valves.

BA260LDA

Spring Return (fail closed) actuator sized for 80 psi air supply 120V three-way Nema 4/4X NAMUR mounted solenoid.

BA260LDB

Double -acting actuator sized for 80 psi air supply 120V four-way Nema 4/4X NAMUR mounted solenoid.-



ML SERIES BUTTERFLY VALVE WITH PNEUMATIC ACTUATOR



HP SERIES LUG BUTTERFLY VALVE WITH PNEUMATIC ACTUATOR

continued PNEUMATIC ACTUATION

Butterfly Valves

Available on HP Series High-Performance Butterfly Available in Wafer and Lugged Patterns. Available on 2" thru 48" Valves. Available on Class 150 2-1/2" thru 36". Available on Class 300 2-1/2" thru 36". Available on C and M Series Butterfly Valves. Available on Wafer and Lugged Patterns. Available on 2" thru 48".

PNEUMATIC BUTTERFLY PACKAGE

Cast Iron Lug Butterfly

200 WOG with Aluminum Bronze Disc and EPDM Liner for on/off service. Temperature Range: 0° to 250° F for HVAC Service Factory assembled and tested Available on 2" to 12" valves.

CLA23E

Double-acting actuator sized for 80 psi air supply. 120V four-way Nema 4/4x Namur mounted solenoid.

CLB23E

Spring return fail closed actuator. 120V three-way Nema 4/4x Namur mounted solenoid.

Pneumatic Actuation and Ball Valve Package Options

- Double-Acting Actuators
- Spring-Return Actuators
- Solenoid Valves
- Actuator Brackets
- Limit Switches
- Valve Positioners
- Modulating Positioners



BA-260 BALL VALVE WITH ELECTRIC ACTUATOR



35 SERIES BALL VALVE WITH ELECTRIC ACTUATOR

ELECTRIC ACTUATION

2-Piece Ball Valves

Available on Threaded-End Valves.
Available on Bronze, Carbon-Steel and Stainless-Steel Valves.
Available on 1/2" thru 2" Valves.

3-Piece Ball Valves

Available on Threaded-End and Socket-Weld-End Valves.
Available on Bronze, Carbon-Steel and Stainless-Steel Valves.
Available on 1/2" thru 2" Valves.

Flanged-End Ball Valves

Available on 150 and 300 lbs. Class Valves
Available on 1/2" thru 12" Valves

ELECTRIC BALL VALVE PACKAGE

2-Piece Full Port Stainless Ball Valve

with stainless ball and stem.
1000 psig rated @ 100° F
Temperature Range: -20° to 450° F
50 psi SWP for on/off service
Factory Assembled and tested
Available on 1/4" to 3" valves.

BA260LDC

120VAC Nema 4 rated electric actuator
25% duty cycle with 2 limit switches/
remote light indicator,
Manual override, visual position indicator.



CL SERIES BUTTERFLY VALVE WITH ELECTRIC ACTUATOR



HP SERIES LUG BUTTERFLY VALVE WITH ELECTRIC ACTUATOR

continued ELECTRIC ACTUATION

Butterfly Valves

Available on C and M Series Iron Butterfly Valves and HP Series High-Performance Butterfly Valves.
Available in Wafer and Lugged Patterns.
Available on 2" thru 48" valves.
Available on Class 150 2-1/2" thru 36".
Available on Class 300 2-1/2" thru 36".
Available on C and M Series Butterfly Valves.
Available on Wafer and Lugged Patterns.
Available on 2" to 48" valves

ELECTRIC BUTTERFLY VALVE PACKAGE



Cast Iron Lug Butterfly

200 WOG with Aluminum Bronze Disc and EPDM Liner for on/off service.
120V four-way Nema 4/4x Namur mounted solenoid.
Temperature Range: 0° to 250° F for HVAC Service
Factory Assembled and tested
Available on 2" to 12" valves.

CLC23E

120VAC Nema 4 rated electric actuator
25% duty cycle with 2 limit switches
Manual override and visual position indicator.

Electric Actuation and Butterfly Valve Package Options
120 Volt AC and DC Voltages
NEMA 4 and 7 Housings
4-20 maDC Valve Positioners
Actuator Brackets
Extra Limit Switches
Reversing Actuators
Limit Switches
Modulating Positioners

BRONZE VALVES



105

BRONZE GATE VALVES, NON-RISING STEM

Threaded End

105
125 SWP-200 WOG, MSS SP-80,
Threaded Bonnet
1/4" thru 4"

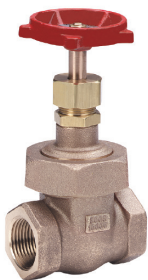


115

1140
150 SWP-300 WOG, MSS SP-80,
Threaded Bonnet
1/4" thru 4"

1141
150 SWP-300 WOG, MSS SP-80,
Union Bonnet
1/4" thru 2"

1176
200 SWP-400 WOG,
Stainless-Steel Seats,
MSS SP-80, Union Bonnet
1/4" thru 2"



1186

1186
300 SWP-1000 WOG,
Stainless-Steel Seats,
MSS SP-80, Union Bonnet
1/4" thru 2"

UP105 *
UltraPure® Lead Free Bronze,
Threaded, 300 WOG, MSS SP-80,
Threaded Bonnet
1/4" thru 2"

UP667 *
UltraPure® Lead Free Brass,
Threaded, 200 WOG, Threaded
Bonnet
1/4" thru 2"



UP667

Solder End

115
125 SWP-200 WOG, MSS SP-80,
Threaded Bonnet
3/8" thru 4"



UP115

UP115 *
UltraPure® Lead-Free Bronze, 300
WOG, MSS SP-80, Threaded Bonnet
3/8" thru 2"

UP668 *
UltraPure® Lead-Free Brass, Solder,
200 WOG, Threaded Bonnet
1/4" thru 2"

Press x 
Press Ends

105 P2
200 psig @ 250°F,
MSS SP-80, Threaded Bonnet
1/2" thru 2"

1141 P2
200 psig @ 250°F,
MSS SP-80, Union Bonnet
1/2" thru 2"

UP105 P2 *
UltraPure® Lead-Free Bronze,
200 psig @ 250°F,
MSS SP-80, Threaded Bonnet
1/2" thru 2"



105 P2

BRONZE GATE VALVES, RISING STEM

Threaded End

148
125 SWP-200 WOG,
MSS SP-80, Threaded Bonnet
1/4" thru 4"

1150
150 SWP-300 WOG,
MSS SP-80, Threaded Bonnet
1/4" thru 4"

Press x 
Press Ends

148 P2
125 SWP-200 psig @ 250°F,
MSS SP-80, Threaded Bonnet
1/2" thru 2"



148



148 P2



UP 148

continued BRONZE GATE VALVES, RISING STEM

Threaded End

UP148 *
UltraPure® Lead-Free Bronze,
300 WOG, MSS SP-80,
Threaded Bonnet
1/4" thru 2"



1174

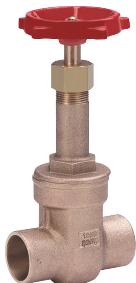
1152
125 SWP-200 WOG,
MSS SP-80, Union Bonnet
1/4" thru 3"

1151
150 SWP-300 WOG, MSS SP-80,
Union Bonnet
1/4" thru 3"

1153
200 SWP-400 WOG, Bronze
Seats, MSS SP-80, Union Bonnet
1/4" thru 3"

1156
200 SWP-400 WOG, Cu-Ni Seat
Ring, MSS SP-80, Union Bonnet
1/4" thru 2"

1174
200 SWP-400 WOG, Stainless-
Steel Seat Ring, MSS SP-80,
Union Bonnet
1/4" thru 3"



149

1182
300 SWP-1000 WOG, Cu-Ni Seat
Ring, MSS SP-80, Union Bonnet
1/4" thru 2"

1184
300 SWP-1000 WOG,
Stainless-Steel Seat Ring,
MSS SP-80, Union Bonnet
1/4" thru 3"

Solder End

149
125 SWP-200 WOG, MSS SP-80,
Threaded Bonnet
3/8" thru 4"



1169

continued BRONZE GATE VALVES, RISING STEM

Solder End

1169
150 SWP-300 WOG,
MSS SP-80, Union Bonnet
3/8" thru 3"

UP149 *
UltraPure® Lead-Free Bronze,
300 WOG, MSS SP-80,
Threaded Bonnet
3/8" thru 2"



UP149

Press x Press Ends

148 P2
200 psig @ 250°F,
MSS SP-80, Threaded Bonnet
1/2" thru 2"



1152 P2
200 psig @ 250°F,
MSS SP-80, Union Bonnet
1/2" thru 2"

UP148 P2 *
UltraPure® Lead-Free Bronze,
200 psig @ 250°F, MSS SP-80,
Threaded Bonnet
1/2" thru 2"



UP148 P2

QUICK-OPENING GATE VALVES

Threaded Ends

P900
150 WSP-300 WOG, Spring-
Loaded Handle
1" thru 3"

P901
150 WSP-300 WOG, Quick-Open
Lever Handle
1/2" thru 4"

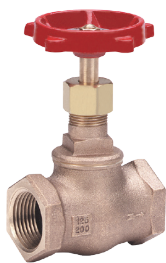
902
150 WOG O-Ring Seal,
Quick-Open Lever with Springs
3/4" and 1-1/4"



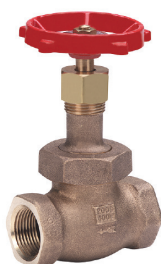
P901

* Meets Senate law S3874. IAPMO tested and certified to NSF/ANSI 372 for "lead-free" compliance.

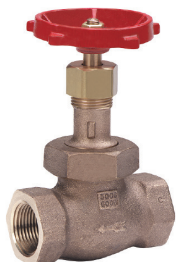
BRONZE VALVES



502



570



593A

BRONZE GLOBE VALVES

Threaded Ends

502

125 SWP-200 WOG, MSS SP-80, Bronze Disc, Threaded Bonnet 1/8" thru 3"

600

200 SWP-400 WOG, MSS SP-80, Needle Disc, Threaded Bonnet 1/8" thru 3/4"

590T

150 SWP-300 WOG, MSS SP-80, PTFE Disc, Union Bonnet 1/8" thru 3"

591A

150 SWP-300 WOG, MSS SP-80, SS Seat & Disc, Union Bonnet 1/4" thru 2"

570

200 SWP-400 WOG, MSS SP-80, Bronze Disc, Union Bonnet 1/8" thru 3"

572

300 SWP-1000 WOG, MSS SP-80, Bronze Disc, Union Bonnet 1/4" thru 2"

592A

200 SWP-400 WOG, MSS SP-80, SS Seat & Disc, Union Bonnet 1/4" thru 2"

593A

300 SWP-1000 WOG, MSS SP-80, SS Seat & Disc, Union Bonnet 1/4" thru 2"

UP502 *

UltraPure® Lead-Free Bronze, 300 WOG, MSS SP-80, Bronze Disc, Threaded Bonnet 1/8" thru 2"



1590T



UP1502



502 P2

continued BRONZE GLOBE VALVES

Solder Ends

1502

125 SWP-200 WOG, MSS SP-80, Bronze Disc, Threaded Bonnet 3/8" thru 2"

1590T

150 SWP-300 WOG, MSS SP-80, PTFE Disc, Union Bonnet 1/2" thru 3"

UP1502 *

UltraPure® Lead-Free Bronze, 300 WOG, MSS SP-80, Bronze Disc, Threaded Bonnet 3/8" thru 2"

Press x Press Ends



502 P2

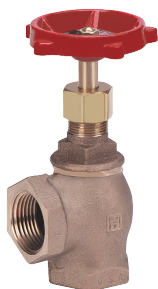
200 psig @ 250°F, MSS SP-80, Bronze Disc, Threaded Bonnet 1/2" thru 2"

590T P2

200 psig @ 250°F, MSS SP-80, PTFE Disc, Union Bonnet 1/2" thru 2"

UP502 P2 *

UltraPure® Lead-Free Bronze, 200 psig @ 250°F, MSS SP-80, Bronze Disc, Threaded Bonnet 1/2" thru 2"



504



595T



509T

BRONZE ANGLE VALVES

Threaded Ends

504

125 SWP-200 WOG, MSS SP-80, Bronze Disc, Threaded Bonnet 1/4" thru 2-1/2"

582

300 SWP-600 WOG, MSS SP-80, Bronze Disc, Union Bonnet 1/4" thru 2"

595T

150 SWP-300 WOG, MSS SP-80, PTFE Disc, Union Bonnet 1/4" thru 2"

BRONZE CHECK VALVES HORIZONTAL SWING CHECK

Threaded Ends

509

Bronze, 125 SWP-200 WOG, MSS SP-80, Brass Disc (1/4" - 1-1/2"), Bronze Disc (2" - 3") 1/4" thru 3"

509T

Bronze, 125 SWP-200 WOG, MSS SP-80, PTFE Disc 1/4" thru 2"

510T

Bronze, 150 SWP-300 WOG, MSS SP-80, PTFE Disc 1/4" thru 2"

515

Bronze, 150 SWP-300 WOG, MSS SP-80, Bronze Disc 1/4" thru 2"

UP509 *

UltraPure® Lead-Free Bronze, 300 WOG (1/4" thru 2"), 200 WOG (2-1/2" thru 3"), MSS SP-80, Bronze Disc, Threaded 1/4" thru 3"



1509



969



UP509 P2

continued BRONZE CHECK VALVES HORIZONTAL SWING CHECK

UP967 *

UltraPure® Lead Free Brass, Brass Disc, 200 WOG 3/8" thru 3"

Solder Ends

1509

Bronze, 125 SWP-200 WOG, MSS SP-80, Bronze Disc 3/8" thru 3"

1509T

Bronze, 125 SWP-200 WOG, MSS SP-80, PTFE Disc 3/8" thru 2"

1510T

Bronze, 150 SWP-300 WOG, MSS SP-80, PTFE Disc (Also available w/Bronze Disc) 1/2" thru 2"

UP1509 *

UltraPure® Lead-Free Bronze, 300 WOG, MSS SP-80, Bronze Disc 3/8" thru 3"

UP968 *

UltraPure® Lead-Free Brass, 200 WOG, Brass Disc 3/8" thru 3"

Press x Press Ends

509 P2

Bronze, 200 psig @ 250°F, MSS SP-80, Brass Disc 1/2" thru 2"

969

Brass, 200 psig @ 250°F, Brass Disc, Integral Seat 1/2" thru 2"

UP509 P2 *

UltraPure® Lead-Free Bronze, 200 psig @ 250°F, Brass Disc, MSS SP-80 1/2" thru 2"



* Meets Senate law S3874. IAPMO tested and certified to NSF/ANSI 372 for "lead-free" compliance.

BRONZE VALVES



UP969



509Y



548B P2

continued BRONZE CHECK VALVES HORIZONTAL SWING CHECK

UP969 *
UltraPure® Lead-Free Brass,
Brass Disc, 200 psig @ 250°F
1/2" thru 2"

HORIZONTAL SWING CHECK – Y PATTERN

Threaded Ends

507
Bronze, 300 SWP-600 WOG,
MSS SP-80, Bronze Disc
1/4" thru 3"

508
Bronze, 200 SWP-400 WOG,
MSS SP-80, Bronze Disc
1/4" thru 3"

509Y
Bronze, 125 SWP-200 WOG,
MSS SP-80, Bronze Disc
1/4" thru 3"

515Y
Bronze, 150 SWP-300 WOG,
MSS SP-80, Bronze Disc
1/4" thru 3"

Press x 
Press Ends

509Y P2
Bronze, 200 psig @ 250°F, MSS
SP-80, Bronze Disc
1/2" thru 2"



UP548T



1548T



UP548T P2

SPRING-LOADED LIFT CHECK

Threaded Ends

548B
Bronze, 250 WOG,
BUNA Disc
3/8" thru 2"

548T
Bronze, 250 WOG,
PTFE Disc
3/8" thru 2"

UP548T *
UltraPure® Lead-Free Bronze,
PTFE Disc, 250 WOG,
3/8" thru 2"

Solder Ends

1548T
Bronze, 250 WOG,
PTFE Disc
3/8" thru 2"

1548B
Bronze, 250 WOG,
BUNA Disc
3/8" thru 2"

UP1548T *
UltraPure® Lead-Free Bronze,
PTFE Disc, 250 WOG,
3/8" thru 2"

Press Ends 

548B P2
Bronze, 200 psig @ 250°F,
Buna Disc
1/2" thru 2"

548T P2
Bronze, 200 psig @ 250°F,
PTFE Disc
1/2" thru 2"

UP548T P2 *
UltraPure® Lead-Free Bronze,
200 psig @ 250°F, PTFE Disc,
1/2" thru 2"



1550

CAST STEEL GATE

1550CB2

Class 150, Flanged, API 600, ASME B16.34 Design, API 598 Tested, Available in Butt-weld, Consult Factory.

2" thru 24"

3050CB2

Class 300, Flanged, API 600, ASME B16.34 Design, API 598 Tested, Available in Butt-weld, Consult Factory.

2" thru 24"

6050CB2

Class 600, Flanged, API 600, ASME B16.34 Design, API 598 Tested, Available in Butt-weld, Consult Factory.

2" thru 12"



1560

CAST STEEL GLOBE

1560CB2

Class 150, Flanged, API 623, ASME B16.34 Design, API 598 Tested, Available in Butt-weld, Consult Factory.

2" thru 8"

3060CB2

Class 300, Flanged, API 623, ASME B16.34 Design, API 598 Tested, Available in Butt-Weld, Consult Factory.

2" thru 8"

6060CB2

Class 600, Flanged, API 623, ASME B16.34 Design, API 598 Tested, Available in Butt-Weld, Consult Factory.

2" thru 6"



1570

CAST STEEL CHECK

1570CB2

Class 150, Flanged, API 594, ASME B16.34 Design, API 598 Tested, Available in Butt-Weld, Consult Factory.

2" thru 12"

3070CB2

Class 300, Flanged, API 594, ASME B16.34 Design, API 598 Tested, Available in Butt-Weld, Consult Factory.

2" thru 12"

6070CB2

Class 600, Flanged, API 594, ASME B16.34 Design, API 598 Tested, Available in Butt-Weld, Consult Factory.

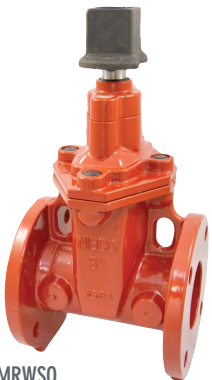
2" thru 12"



F2882M



2894M



2882-MRWSQ



2885-MRW

IRON GATE

2882A or 2882M

125 SWP 200 WOG, Non-Rising Stem, IBBM, MSS SP-70
A Available 2" thru 12"
M Available 2" thru 24"

2882A26 or 2882M26

125 SWP 200 WOG, Non-Rising Stem, All Iron, MSS SP-70
A Available 2" thru 12"
M Available 2" thru 24"

2885A or 2885M

125 SWP 200 WOG, OS & Y, IBBM, MSS SP-70
A Available 2" thru 12"
M Available 2" thru 24"

2885M26*

UltraPure Lead-Free Iron
125 SWP 200 WOG, OS & Y, All Iron, MSS SP-70
M Available 2" thru 12"

2885M13

3% Nickel Iron, OS & Y, Iron Body, SS Trim, MSS SP-70
2" thru 12"

2894A or 2894M

250 WSP 500 WOG, OS & Y, IBBM, MSS SP-70
A Available 2" thru 12"
M Available 2" thru 12"



2882-MRW, 2882-MRWSQ

UltraPure Low Lead Iron
300 psi, MSS SP-70
2" thru 16"

2885-MRW

UltraPure Low Lead Iron
300 psi, OS & Y MSS SP-70
2 1/2" thru 16"



2887M



2981A

IRON CLIP GATE

2887M

150 SWP 225 WOG, Bronze Trim, Threaded
1/4" thru 2"
125 SWP 175 WOG, Bronze Trim, Threaded
2" thru 4"

2888M

150 SWP 225 WOG, All Iron, Threaded
1/4" thru 2"
125 SWP 175 WOG, All Iron, Threaded
2-1/2" thru 4"

IRON GLOBE

2981A or 2981M

125 SWP 200 WOG, MSS SP-85
A Available 2" thru 10"
M Available 2" thru 10"

2983A or 2983M

250 SWP 500 WOG, IBBM, MSS SP-85
A Available 2-1/2" thru 6"
M Available 2-1/2" thru 6"

2986M

Angle Globe, 125 SWP, 200 WOG, MSS SP-85
2" thru 8"

2986M-SC

Angle Stop Check, Globe Style, 125 SWP, 200 WOG, MSS SP-85
2" thru 8"



2974M



2974MLW



2970

IRON CHECK

2974A or 2974M

125 SWP 200 WOG, IBBM, MSS SP-71

A Available 2" thru 12"

M Available 2" thru 24"

2974MLW

125 SWP 200 WOG, IBBM, MSS SP-71, Lever and Weight, 2" thru 12"

2974A26 or 2974M26*

UltraPure Lead-Free Iron
125 SWP 200 WOG, All Iron,
A Available 2" thru 12"
M Available 2" thru 24"

2974M13

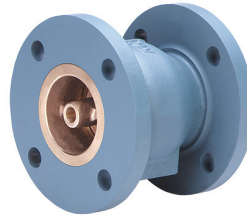
3% Nickel Iron, 125 SWP, 200 WOG Iron Body, Stainless-Steel Trim, MSS SP-71
2" thru 12"

2970M

250 SWP 500 WOG, IBBM, MSS SP-71
2-1/2" thru 6"



1400



1800

SILENT CHECK

1400

Class 125, Wafer-Style Cast-Iron Body, Stainless-Steel Disc, Stainless-Steel Spring, Meets Senate Law S3874
2" thru 10"

(Also Available Class 250)

1800

Class 125, Globe-Style Cast-Iron Body, Stainless-Steel Disc, Stainless-Steel Spring, Meets Senate Law S3874
2-1/2" thru 42"

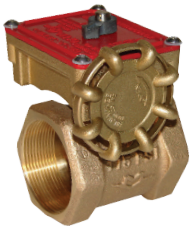
(Also Available Class 250)

NON-SLAM CHECK

8800

Class 125, Wafer-Style Cast-Iron Body, Stainless-Steel Double Disc
2" thru 16"

* Meets Senate law S3874. IAPMO tested and certified to NSF/ANSI 372 for "lead-free" compliance.



UPBBTSCS02



LEAD-FREE BRONZE SLO-CLOSE SPRINKLER-CONTROL VALVE INDOOR/ OUTDOOR*

UPBBTSC

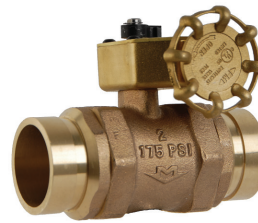
175 psig, UL/FM, Slo-Close with Position Indicator, IAPMO Tested and Certified, Less Tamper Switch, NPT-Threaded Ends 1" - 2"

UPBBTSCS02

NPT-Threaded Ends, 175 psig, UL/FM, Slo-Close with Position Indicator, Tamper Switch 1" thru 2"

GG-SCS2

Nylon Coated Ductile Iron Grooved End Butterfly, 300 psi, UL/FM, Extended Neck, Elastomer Encapsulated Disc 2 1/2" thru 10"



BBVSC100

SLO-CLOSE SPRINKLER-CONTROL VALVE INDOOR/ OUTDOOR

BB-SC100

175 psig, UL/FM, Slo-Close w/Position Indicator, Less Tamper Switch, Indoor/Outdoor, Threaded 1" thru 2-1/2"

BB-SCS02

175 psig, UL/FM, Slo-Close w/Position Indicator, With Tamper Switch, Indoor/Outdoor, Threaded 1" thru 2-1/2"

BBVSC100

175 psig, UL/FM, Slo-Close w/Position Indicator, Less Tamper Switch, Indoor/Outdoor, Grooved 2" and 2-1/2"

BBVSCS02

175 psig, UL/FM, Slo-Close w/Position Indicator, With Tamper Switch, Indoor/Outdoor, Grooved 2" and 2-1/2"



GG-SCS2



2885-FP

IRON GATE

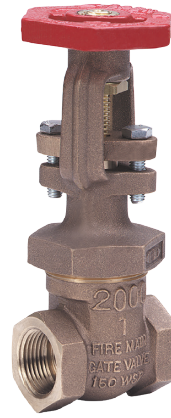
2885-FP
OS & Y Bronze Trim, 175 WOG
UL/FM
2-1/2" thru 8"



2974-FP

IRON CHECK VALVE

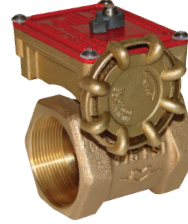
2974-FP
175 WOG, UL/FM, Rubber Disc
2-1/2" thru 8"



118-FP

BRONZE GATE VALVE WITH UL/FM TRIM

118-FP
OS & Y, UL/FM, NPT Threaded
1" thru 2"



BBHSC02

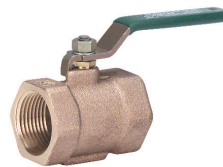
HIGH-RISE SPRINKLER-CONTROL VALVE

BBHSC100
350 psig, Less Tamper Switch,
Threaded
1" thru 2-1/2"

BBHSC02
350 psig, With Tamper Switch,
Threaded
1" thru 2-1/2"

BVHSC100
350 psig, Less Tamper Switch,
Grooved
2" and 2-1/2"

BVHSCS02
350 psig, With Tamper Switch,
Grooved
2" and 2-1/2"



BB2FP

BUTTERBALL® TRIM VALVES UL/FM

BB2FP
175 psig, Quarter Turn, UL-Listed,
FM-Approved,
NPT Threaded Ends
1/2" thru 2"



UPBA-100TIH



UPBA-150H

Options/Accessories
 UPBA-100/150
 UPBA-400/450
 INSULATOR Handle (TIH)
 Oval Handle (OH)
 Locking Oval Handle (LO)
 Stainless-Steel Handle (SH)
 Tee Handle (TH)
 Locking Handle (LD)
 Extension Handle (XH)
 Extension Handle w/Memory Stop (XM)
 Memory Stop (MS)
 Chain Lever (CL)

2-PIECE LEAD-FREE BRONZE BALL VALVES

Standard Port

UPBA-100 / UPBA-100S *
 600 WOG, MSS SP-110, Threaded,
 UPBA-100S with Stainless Steel
 Ball & Stem
 1/4" thru 3"

UPBA-150 / UPBA-150S *
 600 WOG, MSS SP-110, Solder,
 UPBA-150S with Stainless Steel
 Ball & Stem
 3/8" thru 3"

UPBA-100 P2 / UPBA-100S P2 *
 200 psig @ 250°F, MSS SP-110,
 Press X Press, UPBA-100S P2
 with Stainless Steel Ball
 and Stem
 1/2" thru 3"

Full Port

UPBA-100H *
 600 WOG, Threaded with
 Hose-End, Cap and Chain
 1/2" and 3/4"

UPBA-150H *
 600 WOG, Solder with Hose-End,
 Cap and Chain
 1/2" and 3/4"

UPBA-400 / UPBA-400S *
 600 WOG, MSS SP-110, Threaded,
 UPBA-400S with Stainless Steel
 Ball & Stem
 1/4" thru 2"

UPBA-450 / UPBA-450S *
 600 WOG, MSS SP-110, Solder,
 UPBA-450S with Stainless Steel
 Ball & Stem
 3/8" thru 2"

UPBA-100H P1 *
 200 psig @ 250°F, MSS SP-110,
 Press X Hose-End
 1/2" and 3/4"



UPBA-400 P2 XH



UPBA-475B



UPBA-481BXH

Options/Accessories
 UPBA-400/450
 INSULATOR Handle (TIH)
 Oval Handle (OH)
 Locking Oval Handle (LO)
 Stainless-Steel Handle (SH)
 Tee Handle (TH)
 Locking Handle (LD)
 Extension Handle (XH)
 Extension Handle w/Memory Stop (XM)
 Memory Stop (MS)
 Chain Lever (CL)

UPBA-475B/485B
UPBA-480B/490B
 INSULATOR Handle (TIH)
 Oval Handle (OH)
 Stainless-Steel Handle (SH)
 Tee Handle (TH)
 Extension Handle (XH)
 Extension Handle with Memory Stop (XM)
 Memory Stop (MS)

continued 2-PIECE LEAD-FREE BRONZE BALL VALVES

UPBA-400 P2 / UPBA-400S P2 *
 200 psig @ 250°F, MSS SP-110,
 Press X Press, UPBA-400S P2
 with Stainless Steel Ball
 and Stem
 1/2" thru 2"

2-PIECE LEAD-FREE BRASS BALL VALVES*

UPBA-475B **
 600 WOG (1/2" thru 2"), 400 WOG
 (2-1/2" thru 3"), MSS SP-110,
 UL/CSA Rated to 2", Threaded
 1/4" thru 3"

UPBA-485B **
 600 WOG (1/2" thru 2"), 400
 WOG (2-1/2" thru 3"), MSS SP-110,
 Solder
 1/2" thru 3"

Full Port

UPBA-480B / UPBA-480S **
 200 psig @ 250°F, MSS SP-110,
 Press X Press, UPBA-480S with
 Stainless Steel Ball and Stem
 1/2" thru 4"

UPBA-480SH **
 200 psig @ 250°F, MSS SP-110,
 Press X Hose-End
 1/2" thru 3/4"

UPBA-481B / UPBA-481S **
 200 psig @ 250°F, MSS SP-110,
 Extension Stem With Memory
 Stop, Press X Press, UPBA-481S with
 Stainless Steel Ball and Stem
 1/2" thru 3"



UPBA-490B



UPBA-491B



UPBA-350

Options/Accessories

- UPBA-480B/490B
- UPBA-300/350
- INSULATOR Handle (TIH)
- Oval Handle (OH)
- Stainless-Steel Handle (SH)
- Tee Handle (TH)
- Extension Handle (XH)
- Extension Handle with Memory Stop (XM)
- Memory Stop (MS)
- Chain Lever (CL)

continued
2-PIECE 
LEAD-FREE BRASS
BALL VALVES

UPBA-490B / UPBA-490S *
 200 psig @ 250°F, MSS SP-110,
 Press X Threaded, UPBA-490S with
 Stainless Steel Ball and Stem
 1/2" thru 4"

UPBA-490SH *
 200 psig @ 250°F, MSS SP-110,
 Press X Hose
 1/2" and 3/4"

UPBA-491B / UPBA-491S *
 200 psig @ 250°F, MSS SP-110,
 Extension Stem with Memory Stop,
 Press X Threaded, UPBA-491S with
 Stainless Steel Ball and Stem
 1/2" thru 2"

3-PIECE 
LEAD-FREE BRASS
BALL VALVES

Full Port

UPBA-300 / UPBA-300S *
 600 WOG, MSS SP-110, Threaded,
 UPBA-300S with Stainless Steel
 Ball & Stem
 1/4" thru 3"

UPBA-350 / UPBA-350S *
 600 WOG, MSS SP-110, Solder,
 UPBA-350S with Stainless Steel
 Ball & Stem
 3/8" thru 3"

UPBA-300 P2 / UPBA-300S P2 *
 200 psig @ 250°F, MSS SP-110,
 Press X Press, UPBA-300S P2
 with Stainless Steel Ball & Stem
 1/2" thru 2"



UP105



UP105 P2



UP667



LEAD-FREE BRONZE
GATE VALVES

Non-Rising Stem

UP105 *
 300 WOG, MSS SP-80, Threaded
 Bonnet, Threaded
 1/4" thru 2"

UP115 *
 300 WOG, MSS SP-80, Threaded
 Bonnet, Solder
 3/8" thru 2"

UP105 P2 *
 200 psig @ 250°F, MSS SP-80,
 Threaded Bonnet, Press X Press
 1/2" thru 2"

Rising Stem

UP148 *
 300 WOG, MSS SP-80, Threaded
 Bonnet, Threaded
 1/4" thru 2"

UP149 *
 300 WOG, MSS SP-80, Threaded
 Bonnet, Solder
 1/2" thru 2"

UP148 P2 *
 200 psig @ 250°F, MSS SP-80,
 Threaded Bonnet, Press X Press
 1/2" thru 2"



LEAD-FREE BRASS
GATE VALVES

Non-Rising Stem

UP667 *
 200 WOG, Threaded Bonnet,
 Threaded
 1/4" thru 2"

UP668 *
 200 WOG, Threaded Bonnet,
 Solder
 1/2" thru 2"

* Meets Senate law S3874. IAPMO tested and certified to NSF/ANSI 372 for "lead-free" compliance.

** Meets Senate Law S3874. Tested and Certified by IAPMO R & T to NSF/ANSI 61 and NSF/ANSI 372 for "Lead Free" compliance.



UP502 P2



UP1502



UP509



UP968



UP969



LEAD-FREE BRONZE GLOBE VALVES

UP502 *
300 WOG, MSS SP-80, Threaded
Bonnet, Threaded
1/8" thru 2"

UP1502 *
300 WOG, MSS SP-80, Threaded
Bonnet, Solder
3/8" thru 2"

UP502 P2 *
200 psig @ 250°F, Press X
Press, MSS SP-80, Threaded
Bonnet, Press X Press
1/2" thru 2"



LEAD-FREE BRONZE CHECK VALVES

Horizontal Swing Check

UP509 *
300 WOG, Bronze Disc,
MSS SP-80, Threaded
1/4" thru 3"

UP1509 *
300 WOG, Bronze Disc,
MSS SP-80, Solder
3/8" thru 3"

UP509 P2 *
300 WOG, Bronze Disc,
MSS SP-80, Press X Press
1/2" thru 2"



LEAD-FREE CHECK VALVES

UP967 *
Brass, 200 WOG, Brass Disc,
Threaded, 3/8" thru 3"

UP968 *
Brass, 200 WOG, Brass Disc,
Solder, 3/8" thru 3"

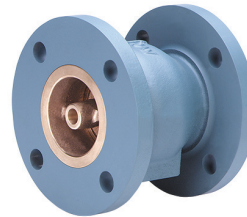
UP969 *
Brass, 200 psig @ 250°F, Brass
Disc, Press x Press, 1/2" thru 2"



UP548T P2



1400



1800



LEAD-FREE SPRING LOAD LIFT CHECK VALVES

UP548T *
PTFE Disc, 250 WOG,
Threaded, 3/8" thru 2"

UP1548T *
PTFE Disc, 250 WOG,
Solder, 3/8" thru 2"

UP548T P2 *
200 psig @ 250°F, PTFE Disc,
Press X Press
1/2" thru 2"

SILENT CHECK

1400

Class 125, Wafer-Style Cast-Iron
Body, Stainless-Steel Disc,
Stainless-Steel Spring, Meets
Senate Law S3874

2" thru 10" (Also Available Class 250)

1800*

Class 125, Globe-Style Cast-Iron
Body, Stainless-Steel Disc,
Stainless-Steel Spring, Meets
Senate Law S3874

2-1/2" thru 42" (Also Available Class 250)

NON-SLAM CHECK

8800

Class 125, Wafer-Style Cast-Iron
Body, Stainless-Steel Double Disc
2" thru 16"



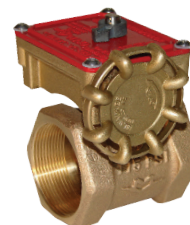
LEAD-FREE BRONZE SLO- CLOSE SPRINKLER- CONTROL VALVE INDOOR/OUTDOOR

UPBBTSCW

175 psig, UL/FM, Slo-Close with
Position Indicator, IAPMO Tested
and Certified, Less Tamper
Switch, NPT-Threaded Ends
1" - 2"

UPBBTSCS02W

NPT-Threaded Ends, 175 psig, UL/
FM, Slo-Close with Position
Indicator, Tamper Switch
1" thru 2"



UPBBTSCS02W



HP1LSS WITH GEAR OPERATOR

LEAD-FREE HIGH PERFORMANCE BUTTERFLY

HP1LSS4212/HP3LSS4212/
HP1LSS4213/HP3LSS4213
Stainless Steel Body, Lug Style,
Stainless Steel Disc, RPTE
Seat, bi-directional dead-end
service and double offset design.
ANSI Class 150 and 300 available
in sizes 2 1/2" - 24". Certified by
IAPMO R&T to NSF/ANSI 61 and
NSF/ANSI 372 for low lead
requirements.



LEAD-FREE COMMERCIAL BUTTERFLY

ML133E/233E/333E
Cast Iron Body, Lug Style,
Aluminum Bronze Disc,
EPDM Liner, Bi-Directional
Dead-End Service 200 psig Max
2" thru 12"

ML133E/333E
Cast Iron Body, Lug Style,
Aluminum Bronze Disc,
EPDM Liner,
Bi-Directional Dead-End Service
200 psig Max 2" thru 12",
Uni-Directional Dead-End Service
150 psig Max
14" thru 24"

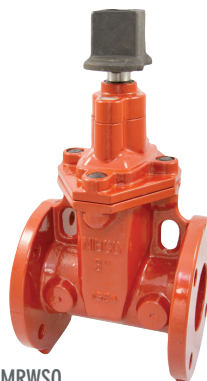
CL Series
Cast Iron Body, Lug Style,
Aluminum Bronze Disc,
EPDM Liner, Bi-Directional
Dead-End Service 200 psig Max
2" thru 12", Uni-Directional
Dead-End Service 150 psig Max
14" thru 24"



ML133E



CL323E



2882-MRWSQ



2885-MRW



LEAD-FREE IRON GATE

2885M26
125 SWP 200 WOG, OS & Y, All
Iron, MSS SP-70
M Available 2" thru 12"

2882-MRW, 2882-MRWSQ
UltraPure Low Lead Iron
300 psi, MSS SP-70
2" thru 16"

2885-MRW
UltraPure Low Lead Iron
300 psi, OS & Y MSS SP-70
2 1/2" thru 16"

LEAD-FREE IRON CHECK

2974A26 or 2974M26
125 SWP 200 WOG, All Iron,
A Available 2" thru 12"
M Available 2" thru 24"



Stop the hammer.

Protect Sprinkler Systems With Slo-Close Butterball® Valves.

Sudden changes in water flow give pipes a pounding. To avoid water hammer damage, use newly improved Slo-Close Butterball® Valves. A more efficient, more reliable design in a lower profile gearbox gives you better performance and easier installation and access. These one-piece full port valves provide triple-seal protection using a unique seal-welded disc and stainless steel stem.

Slo-Close Butterball valves can be ordered with a built-in supervisory switch. Lead-free* UltraPure options are also available, for compliance in fire protection systems charged off of potable water lines.

- Available in 1" - 2½" (threaded end) and 2" - 2½" (grooved end) sizes. The lead-free UltraPure Butterball is available in 1"- 2" (threaded end).
- Internal tamper switch (indoor/outdoor use) signals disc movement.
- UL and FM approved for up to 175 PSI.
- Approved by NYC Board of Standards & Appeals for 350 PSI in hi-rise buildings.

For powerful shock control, use Slo-Close Butterball Valves. Download a BB-SC spec sheet at www.MilwaukeeValve.com to help hammer out your next fire protection system.



Triple seal
EPDM insert
seals bubble tight.



MILWAUKEE VALVE

The Milwaukee Valve logo, UltraPure and Butterball are registered trademarks of Milwaukee Valve Co., Inc.
* Meets Senate law S3874. IAPMO tested and certified to NSF/ANSI 372 for "lead-free" compliance.
© Milwaukee Valve Company, 2018

www.UltraPureNoLeadValves.com
www.MilwaukeeValve.com
262-432-2700 • Fax 262-432-2701



Pressed for time?

JUST PRESS, CRIMP AND TRIPLE YOUR PRODUCTIVITY!¹

Reduce installation time up to 68% with Milwaukee Valve's extensive new line of UltraPress[®] press-connection valves. Perfect for potable water, HVAC and inert gas systems, UltraPress[®] valves quickly install without brazing, soldering or special tools. With no open flame required, water service connections can be made wet or dry for faster, easier repairs. Plus, UltraPress eliminates heat-installation costs like solder, flux, propane torches, oxygen/gas bottles and "hot" work permits.

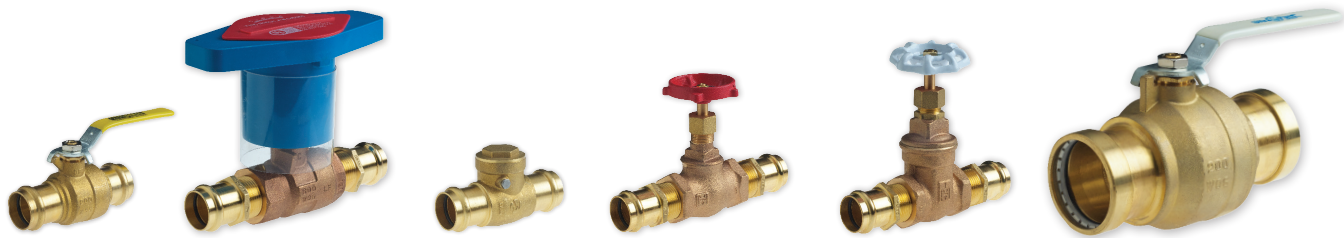
Available in fully annealed brass, bronze and lead-free² UltraPure[®] alloys—in ball, gate, globe and check styles—you're sure to find the valves you need. Accessories, too, like extension, INSULATOR/MS[®] and lockout handles.

See the full line of UltraPress products, additional features, full specifications, and a downloadable brochure at www.UltraPressValves.com.

¹ Estimate based on MCAA's WebLEM (Web-based Labor Estimating Manual).
² Lead content less than 0.25%, defined as lead-free by US Senate Bill S.3874.
 © 2016, Milwaukee Valve Company.



16550 West Stratton Drive • New Berlin, WI 53151
 262.432.2700 • Fax 262.432.2701
www.MilwaukeeValve.com • www.UltraPressValves.com



TANK AND TRAILER VALVES



P-2056



P-2855E

HOSE NOZZLE

P-202

Bronze, Overwing Aircraft Refueling, Tank Trucks, Bronze Internal Parts, 2 Stage Fulcrum Lever, Balanced Dashpot Control, Dual Disc, Less Strainer, Cap, and Cable
1-1/2", 2", 2-1/2" x 2"

P-2056

Aluminum, Aircraft Refueling, Cushion Close, Tank Trucks, 135 GPM 25 psig
Inlet Nozzle Pressure, Aluminum & Stainless Internal Parts, Conforms to MIL-N-87963 Type MD-3
2"

BUTTERFLY

P-2855E

Aluminum, EPDM Liner, Tank Trucks, Bulk Plants, Dry Bulk Plants, 90° Arc, Quick Open, Available with Ductile Iron or Stainless Disc
2" thru 6"

P-2855H

Aluminum, Hydrin Liner, Tank Trucks, Bulk Plants, Dry Bulk Plants, 90° Arc, Quick Open, Available with Ductile Iron or Stainless Disc
2" thru 6"

P-2860H

Aluminum, Tank Trucks, Bulk Plants, Dry Bulk Plants, 90° Arc, Quick Open, Hydrin Liner for Air Lines and a Wide Variety of Chemicals to 300°F, Discs are Stainless Steel
2" thru 4"



C-35551



P-900



P-902

GATE

C-35551 / 5551

Aluminum, Bronze Trim, Tank Trucks, Bulk Plants, Filling Stations, Rising Stem, Double Disc, Bolted Bonnet, Round Flange Ends
3" thru 6"

P-2699RF

Aluminum, Transport Tank, Bulk Plants, Filling Stations, Rising Stem, Split Wedge Disc, Bolted Bonnet, Round Flange Ends
4"

P-2671

Bronze, Tank Trucks, Bulk Plants, Filling Stations, Rising Stem, Double Disc, Threaded Bonnet, Flange Ends
2"

P-900

Bronze, Quick Opening, Hazardous Liquid, 150 SWP, Lever Operated, Double Disc, Gland Packed
1" thru 3"

P-901

Bronze, Quick Opening, Double Disc, Gland Packed, 150 SWP, 300 lb. WOG, Lever Operated
1/2" thru 4"

902

Bronze, Quick Opening, Tank Trucks, Bulk Plants, 150 WOG, Lever Operated, Double Disc, O-Ring Stem Packed
3/4" and 1-1/4"



P-509

CHECK

P-509

Bronze, Horizontal Swing, Tank, Dry Bulk Trucks, Bronze Disc, Threaded Cap, Threaded Ends 1/4" thru 3"

P-509S

Bronze, Horizontal Swing, Tank, Dry Bulk Trucks, Composition Disc, Threaded Cap, Threaded Ends 1/4" thru 2"

P-2519A

Swing Check, Aluminum, Dry Bulk Transports, Tank Truck, Aluminum Disc with Viton Seat, 150 WOG 3"

P-717F

Angle Lift Check, Aluminum, 125 psig WOG at 100°F, 25 psig WOG at 350°F, Square Bolted Cap, Square Flange, Viton Disc 2-1/2"

P-717S

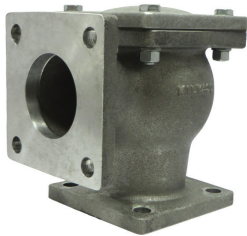
Angle Check, Bronze, 125 psig, WOG at 100°F, 25 psig WOG at 350°F, Threaded Cap, Viton Disc, Threaded Ends, 2"

P-728

Lift Check, Aluminum, Dry Bulk Transports, Tank Trucks, 125 psig WOG at 100°F, 25 psig at 350°F, Spring Loaded, Viton Disc, Threaded Ends 3"

P-729

Lift Check, Aluminum, Dry Bulk Transports, Tank Trucks, 125 psig WOG at 100°F, 25 psig at 350°F, Spring Loaded, Viton Disc, Flanged Ends 3"



P-717



P-728



P-612A

RELIEF

P-612A

Aluminum, Bulk Tank Truck, Pneumatic Conveyor Systems, Railroad Dry Bulk Tanks, NPT Threaded Inlet, Settings from 6 psig to 30 psig 2"

TRANSFORMER/SAMPLER VALVES



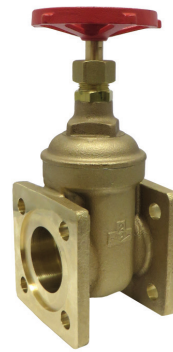
505-001

GLOBE SAMPLER VALVES

505-001
Bronze Body, 200 WOG, Threaded Ends, Teflon Disc, 1/2", 3/4", 1", 1-1/2", 2"

505-202
Bronze Body, 200 WOG, Teflon Disc, Threaded Ends, Complete with 3/8" Sampling Device 1", 1-1/2", 2"

506-202
Bronze Body, Offset Flange Inlet, Threaded Outlet, Teflon Disc, 300 WOG, Complete with 3/8" Sampling Device 1" and 2"



P-2641

GATE SAMPLER VALVE

P-2641
Bronze Body, 300 WOG, Flanged Ends, Solid Wedge, Screwed Bonnet, Non-Rising Stem With Gland Packing, Available with 3/8" Sampling Device P2641B3 2"

FLOW CONTROL AND MEDICAL GAS VALVES



FC200

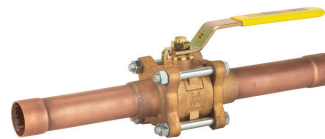
CONTROL VALVES

FC200 Series, Brass, 2-Way, 600 WOG, Linear Characteristics, Integral Mounting Pads, Sizes 1/2" - 2"

FC300 Series, Brass, 3-Way, 600 WOG, Linear Characteristics, Integral Mounting Pads 1/2" - 2"



FC300



MG SERIES

MEDICAL GAS VALVES*

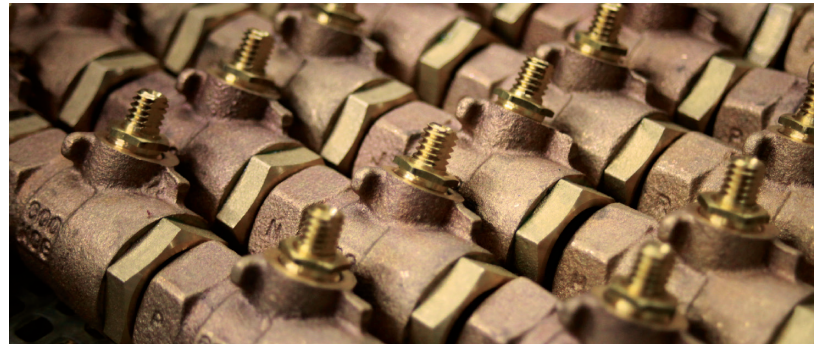
MG Series, 3-Piece Bronze Ball Valve with Extended Copper-Tube Ends, customized to meet individual requirements 1/2" - 2"

ENGINEERING & DESIGN CAPABILITIES

QUALITY IS MORE THAN WHAT MEETS THE EYE.

For the most part, engineering is invisible. Engineers or contractors know what a valve looks like, and knows what it does, but typically, they can't see the superiority designed into each and every Milwaukee Valve product. Milwaukee Valve demands excellence in our engineering department, with groups operating in each of our facilities to support the manufacturing of all products. These engineers provide design services as well, translating the critical specifications and processes into manufactured items – a key step where other suppliers, without our depth of experience, often fall flat.

Milwaukee Valve's well-staffed engineering department is supported by state-of-the-art computer tools, from 3D design using Solidworks, to finite element analysis (FEA) using COSMOS, to computational fluid dynamics (CFD) using CF Design software, to automated data acquisition in our laboratories using Labview. We operate our own fire-test facility to help us achieve and maintain the most advanced fire-safe designs to the latest API and other standards.



Milwaukee Valve's background in the Commercial and Plumbing markets should provide you with confidence to entrust your most difficult engineering applications to our experienced staff, helping you grow your business and providing you with the great service you deserve.

If you have a service that is constantly causing you concern, give us a call. Our application engineering and technical service teams stand ready to help.



We translate our 3D designs directly to tool paths, both on our shop floor and in our pattern shop, which supports our in-house foundry operation. These capabilities also service our engineering and contracting customers, who use these models in their equipment and building designs.

In addition, Milwaukee Valve has extensive experience in the development of products for specific OEMs or demanding service conditions. Some are minor modifications to existing products. Others are turnkey product-development projects designed to meet the demanding safety needs or harsh application requirements of a specific user.

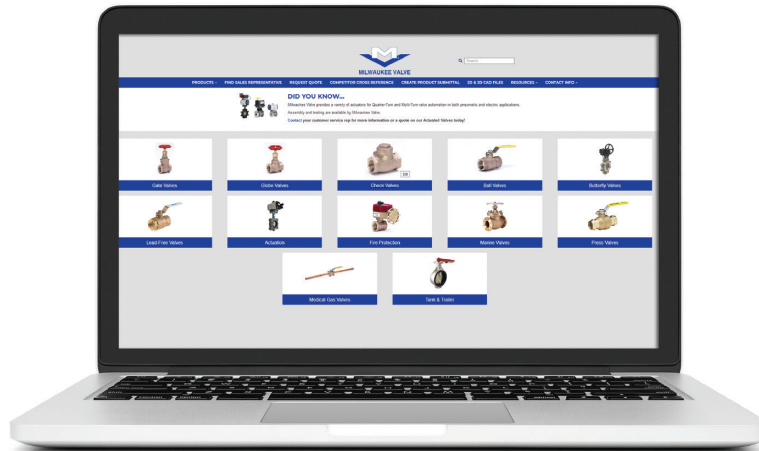
For more information on our capabilities or assistance with a specific problem, contact your Milwaukee Valve sales representative MilwaukeeValve.com/find-sales-rep. Their experience and industry knowledge will simplify finding a solution to your product and application requirements.



This condensed catalog is not a complete depiction of Milwaukee Valve's products or capabilities. Please contact the factory for special service conditions or additional accessories and options.

WEBSITE REDUCES ERRORS AND SAVES TIME

Simplify your projects and reduce ordering errors by building your own valves, courtesy of Milwaukee Valve's online Advanced Search feature.



You know the service, and Milwaukee Valve has the valves and the options to solve your service issues. Found at www.MilwaukeeValve.com, the Advanced Search function acts as an online configurator, laying out all available options in one easy-to-use format. You select the type of valve you require, and choose the available materials, sizes, options, etc. Once all options are selected, you are given the model numbers for the valves that meet your criteria. When you know exactly what you are ordering, the result is fewer returns, lower shipping costs, and all-around time savings. The Advanced Search is especially beneficial in selecting Butterfly and Industrial valves, which both offer thousands of different valve and option combinations.

In addition, the website contains specification data for virtually every Milwaukee Valve product, and has the capacity to produce product submittals, access 2D and 3D CAD files, and is a repository for a wide variety of product information, including price lists, literature downloads, technical service bulletins, competitive cross reference and even provides links to YouTube instruction and installation videos.

And if you require assistance in selecting a valve, ball, seat, actuation or any of many other options, assistance is available from your Milwaukee Valve sales representative. Try it out at www.MilwaukeeValve.com.



MILWAUKEE VALVE

16550 West Stratton Drive,
New Berlin, WI 53151
Phone 262-432-2700 • Fax 262-432-2701
www.MilwaukeeValve.com