

# Products Catalog



**Yamato Valve Co., Ltd.**

<http://www.yamatovalve.co.jp/english/>

BRONZE

BRASS

CAST IRON

BUTTERFLY

DUCTILE IRON

STAINLESS

AUTOMATIC

APPENDIX

# About Us

Thank you for using Yamato Valve's products.

Since our foundation as a specialized valve manufacturer in 1919, we have provided products with the Yamato mark (Y letter on a picture of cherry blossom) for almost 100 years.

With our motto "Customer first," we have always strived to provide high quality products to our customers. Our bronze products are internally casted, machined, assembled, and delivered under an integrated system, which helps us to maintain and improve high quality. The year before last, our group company, Dalian Daimaru Industrial Co., Ltd., started operation as a factory for JIS bronze gate valves and joined as a production factory for the main products ensuring high quality equivalent to those manufactured in Japan.

Under the current situation in which needs are becoming more diverse in the industry and the new wave of technological innovation is unleashed as represented by IoT and AI, we will commit ourselves to developing new products. We also put high priority on the establishment of Yamato as an international brand capable of responding to globalization.

We value the basic simple idea of the manufacturing business: to buy up raw materials at lower prices, create products of higher quality at lower costs in a shorter period, and deliver them more quickly to customers. We will strive to be a company that can contribute to customers and society.

We would greatly appreciate even more support and advice from you.

President and CEO  
Toshikazu Ito

## Group Company

### Daimaru Industrial Co., Ltd.

Main business : Manufacture and sales of casting  
Address : 422 Nishitsudzura-machi, Hikone-shi,  
Shiga, Japan



### Dalian Daimaru Industry Co., Ltd.

Main business : Manufacture and sales of various  
valves and accessories  
Address : Lushun N Rd, Lushunkou Direct,  
Dalian City, Liaoning Province, P.R.  
China



# Index

## 03 BRONZE

- 03 Gate
- Globe
- 04 Swing Check
- 05 Lift Check
- Y strainer
- Wafer Check

06 Ball

07 Direct Valve

## 10 BRASS

- 10 Gate
- Ball

## 12 CAST IRON

- 12 Gate
- Swing Check
- Globe
- 13 Wafer Check
- Y strainer
- Ball

## 15 BUTTERFLY

15 Butterfly

## 17 DUCTILE IRON

- 17 Gate
- Globe
- 18 Swing Check
- Lift Check

## 19 STAINLESS

- 19 Gate
- Globe
- 20 Swing Check

21 Ball

## 24 AUTOMATIC

- 24 Ball
- Butterfly

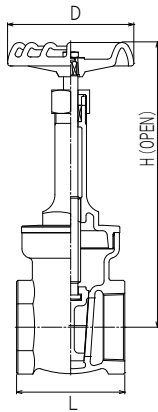
## 25 APPENDIX

- 25 Caution
- 26 Certification

## 10K JIS 10K CAST BRONZE GATE VALVE

Screwed Bonnet, Rising Stem  
Threaded ends to JIS B0203(BS21)  
Designed to JIS B2011

W.O.G -29°C to +120°C (Not Freezing) 1.4MPa, 171°C 1.0 MPa



Parts	Material
Body	Bronze
Bonnet	Bronze
Stem	Brass (Dezincification-Resistant)
Disc	Bronze
Packing	Non-Asbestos

\*This valve is not designed to handle toxic gas or flammable gas.

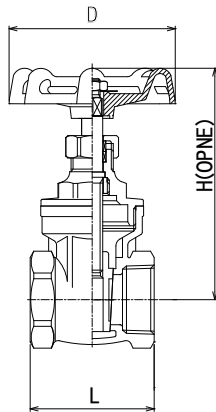
	inch	3/8	1/2	3/4	1	1 1/4	1 1/2	2	2 1/2	3
	mm	10	15	20	25	32	40	50	65	80
L		46	55	65	70	80	90	100	120	140
H		134	135	159	189	217	251	303	388	443
D		55	55	70	80	90	100	110	140	160

Fig. B10G

## PN 16 CAST BRONZE GATE VALVE

Screwed Bonnet, Non Rising Stem  
Threaded ends to JIS B0203(BS21) or NPT

W.O.G -10°C to 100°C (Not Freezing) 1.6MPa



Parts	Material
Body	Bronze
Bonnet	Bronze
Stem	Brass
Disc	Bronze
Packing	PTFE

\*This valve is not designed to handle toxic gas or flammable gas.

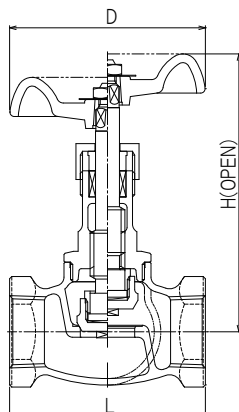
	inch	1/2	3/4	1	1 1/4	1 1/2	2
	mm	15	20	25	32	40	50
L		42	47	50	59	63	71
H		77	88	98	113	128	146
D		14	19	24	32	38	48

Fig. TIG

## 10K JIS 10K CAST BRONZE GLOBE VALVE

Screwed Bonnet, Rising Stem  
Threaded ends to JIS B0203(BS21)  
Designed to JIS B2011

W.O.G -29°C to +120°C (Not Freezing) 1.4MPa, 185°C 1.0 MPa



Parts	Material
Body	Bronze
Bonnet	Bronze
Stem	Brass (Dezincification-Resistant)
Disc	Brass : 3/4, 1, Bronze : 1 1/4 or over
Packing	Non-Asbestos

\*This valve is not designed to handle toxic gas or flammable gas.

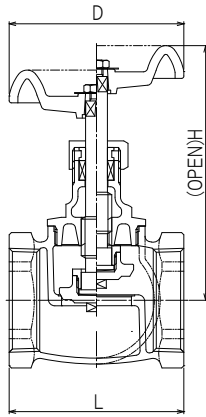
	inch	1/4	3/8	1/2	3/4	1	1 1/4	1 1/2	2
	mm	8	10	15	20	25	32	40	50
L		50	55	65	80	90	105	120	140
H		84	84	89	115	128	142	157	184
D		55	55	63	70	90	100	110	125

Fig. B10S

# CLASS 100 CAST BRONZE GLOBE VALVE

Screwed Bonnet, Rising Stem  
Threaded ends to JIS B0203(BS21)

W.O.G 120°C 0.7MPa, Saturated steam pressure 0.4MPa, Water Non-shock 120°C 1.0MPa



Parts	Material
Body	Bronze
Bonnet	Brass : 1/2, 3/4, Bronze : 1 to 3
Stem	Brass (Dezincification-Resistant)
Disc	Brass : 1, 1 1/4, Bronze : 1 1/2 or over
Packing	Non-Asbestos

\*This valve is not designed to handle toxic gas or flammable gas.

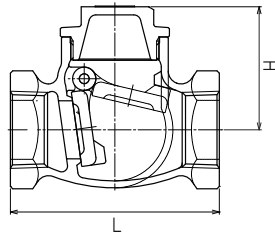
inch	1/2	3/4	1	1 1/4	1 1/2	2	2 1/2	3
mm	15	20	25	32	40	50	65	80
L	45	51	60	72	80	94	115	130
H	72	77	88	99	117	133	172	190
D	55	55	63	70	80	90	125	140

Fig. BS

# 10K JIS 10K CAST BRONZE SWING CHECK VALVE

Screwed Cap  
Threaded ends to JIS B0203(BS21)  
Designed to JIS B2011

W.O.G -29°C to +120°C (Not Freezing) 1.4MPa, 185°C 1.0 MPa



Parts	Material
Body	Bronze
Disc	Bronze
Cap	Bronze
Hinge Pin	Brass

\*This valve is not designed to handle toxic gas or flammable gas.

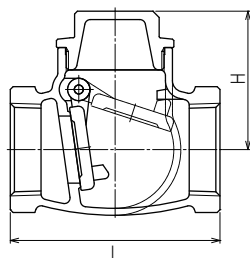
inch	1/2	3/4	1	1 1/4	1 1/2	2
mm	15	20	25	32	40	50
L	65	80	90	105	120	140
H	38	46	53	63	72	86

Fig. B10C

# CLASS 125 CAST BRONZE SWING CHECK VALVE

Screwed Cap  
Threaded ends to JIS B0203(BS21)

W.O.G 120°C 0.88MPa, Water Non-shock 120°C 1.2MPa, Saturated steam 0.5MPa



Parts	Material
Body	Bronze
Disc	Brass : 1 or under, Bronze : 1 1/4 or over
Cap	Brass : 1 or under, Bronze : 1 1/4 or over
Hinge Pin	Brass

\*This valve is not designed to handle toxic gas or flammable gas.

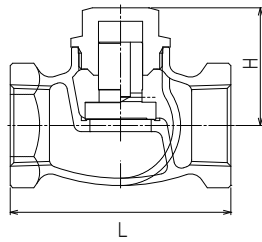
inch	1/2	3/4	1	1 1/4	1 1/2	2	2 1/2	3
mm	15	20	25	32	40	50	65	80
L	55	65	75	90	100	120	148	165
H	36	42	50	59	64	76	88	96

Fig. BC

## 10K CAST BRONZE LIFT CHECK VALVE

Screwed Cap  
Threaded ends to JIS B0203(BS21)

W.O.G -29°C to +120°C (Not Freezing) 1.4MPa, 185°C 1.0 MPa



Parts	Material
Body	Bronze
Disc	Bronze
Cap	Bronze

\*This valve is not designed to handle toxic gas or flammable gas.

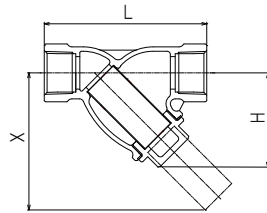
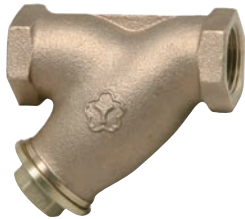
	inch	1/2	3/4	1	1 1/4	1 1/2	2
	mm	15	20	25	32	40	50
L		65	80	90	105	120	140
H		32	40	48	57	66	76

Fig. B10LC

## 10K CAST BRONZE Y-TYPE STRAINER

Screwed Cap  
Stainless steel Screen  
Threaded ends to JIS B0203(BS21)

W.O.G 120°C 1.0MPa, Water Non-shock 120°C 1.0MPa



Parts	Material
Body	Bronze
Cap	Brass : 2 or under, Bronze : 2 1/2
Screen	Stainless(SUS304CP)
Gasket	Non-Asbestos

\*This valve is not designed to handle toxic gas or flammable gas.

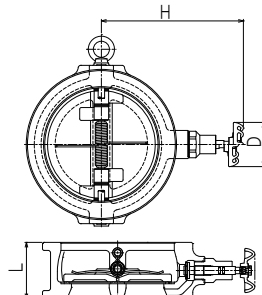
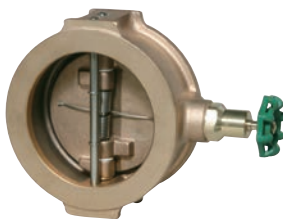
	inch	1/2	3/4	1	1 1/4	1 1/2	2	2 1/2
	mm	15	20	25	32	40	50	65
L		80	100	115	135	160	195	225
H		49	58	71	82	98	120	136
X		70	85	108	128	152	191	216

Fig. B10YT

## 10K CAST BRONZE DUAL PLATE WAFER CHECK VALVE

Water Hammer Absorption Type  
with by-pass  
Wafer connection to JIS 10K Flange

Water Non-shock 100°C 1.4MPa



Parts	Material
Body	Bronze
Plate	Bronze
Spring	Stainless(SUS304-WPB)
Bonnet	Brass
Stem	Bronze
Seat	EPDM

\*This valve is not designed to handle toxic gas or flammable gas.

	inch	2	2 1/2	3	4	5	6	8
	mm	50	65	80	100	125	150	200
L		54	56	60	66	70	76	95
H		128	142	150	164	177	200	228
D		55	55	55	55	55	55	55

Fig. B10WC

W.O. Non-shock 2.8MPa, Air 1.0MPa, W.O.G 120°C 0.7MPa

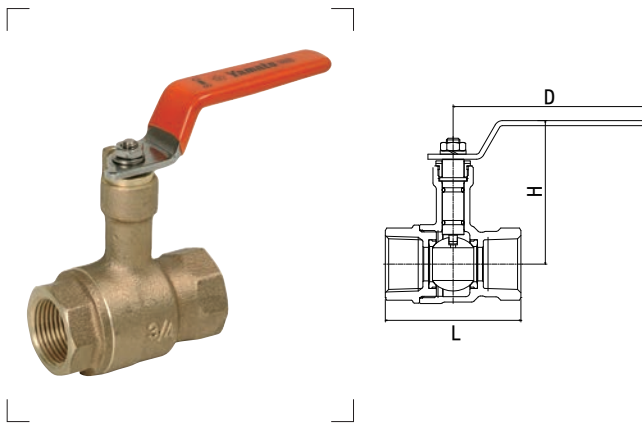


Fig. VLYS

Parts	Material
Body	Bronze
Stem	Stainless(SUS304) : 1 or under, Brass : 1¼ or over
Packing	PTFE
Ball	Stainless(SUS304)
Ball Seat	PTFE
Body Cap	Bronze
O-Ring	FKM

\*This valve is not designed to handle toxic gas or flammable gas.

inch	1/2	3/4	1	1¼	1½	2
mm	15	20	25	32	40	50
L	60	67	81	91	98	117
H	77	80	86	98	104	116
D	85	85	115	115	115	130

## Measures against dezincification of bronze valve

To address the issue of dezincification of valve stem, we adopted CAC406C (Note 1, the former BC6C) ahead of others and realized a perfect solution to corrosion issues. However, adopting CAC406C on all products will inconvenience customers in terms of price; therefore, we adopted economical and high quality dezincification-resistant brass bars, and currently offer CAC406C and NBY for dezincification-resistant materials. We respond to diverse customer needs by offering these two options. Generally, when they are used in piping systems where fluids are well water, hot spring water, or a high temperature hot-water supply system or a high chloride concentration, corrosiveness is higher. Because the cause of corrosiveness is extremely complex, for orders requiring high performance and use in severe conditions, CAC406C is recommended.

(Note 1) CAC406C: bronze continuous casting Type 6

# Direct valve series

Direct valve is newly developed to lay a valve directly in hard vinyl chloride piping. JIS K 6743 VINYL CHLORIDE (PVC-U) pipe fitting for water supply become fully integrated with Bronze Gate Valve JIS B 2011. It definitely contributes to easy and speedy construction.

## Feature

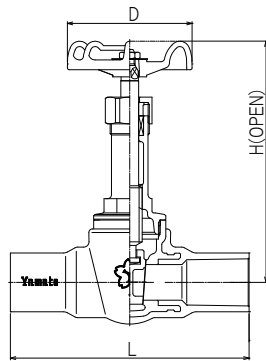
- > Valve socket is unnecessary
- > Easy construction in the small space
- > Decrease the water leaked point
- > Can check a piping state immediately
- > Shorten the construction time



## 10K BRONZE GATE VALVE WITH PVC FITTING

Screwed Bonnet  
Rising Stem  
HIPVC Socket ends to JIS K 6742

Water 0°C to 45°C 1.0MPa



Parts	Material
Body	Bronze
Bonnet	Bronze
Stem	Brass (Dezincification-Resistant)
Disc	Bronze
Packing	Non-Asbestos
Socket	HIPVC

\*This valve is not designed to handle toxic gas or flammable gas.

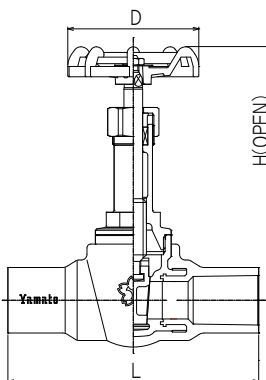
inch	1/2	3/4	1
mm	13	20	25
L	108	135	55
H	135	159	70
D	152	189	80

Fig. B10EGN

## 10K BRONZE GATE VALVE WITH PVC FITTING

Screwed Bonnet, Rising Stem  
Heat Resistant HIPVC  
Socket ends to JIS K 6776

Water 0°C to 90°C 1.0MPa



Parts	Material
Body	Bronze
Bonnet	Bronze
Stem	Brass (Dezincification-Resistant)
Disc	Bronze
Packing	Non-Asbestos
Socket	HTPVC

\*This valve is not designed to handle toxic gas or flammable gas.

inch	1/2	3/4	1
mm	13	20	25
L	108	135	52
H	133	154	70
D	152	184	80

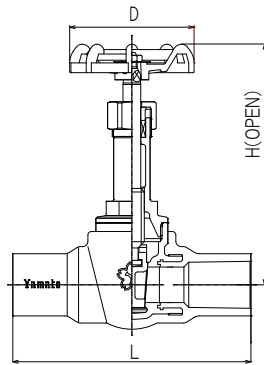
Fig. B10ETGN



## 10K BRONZE GATE VALVE WITH CLEAR PVC FITTING

Screwed Bonnet, Rising Stem  
Clear HIPVC Socket ends to JIS K 6742

Water 0°C to 45°C 1.0MPa



Parts	Material
Body	Bronze
Bonnet	Bronze
Stem	Brass (Dezincification-Resistant)
Disc	Bronze
Packing	Non-Asbestos
Socket	HIPVC

\*This valve is not designed to handle toxic gas or flammable gas.

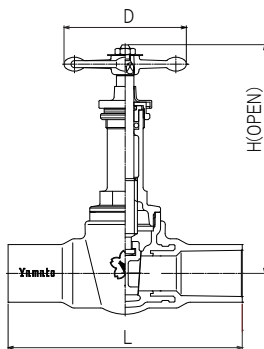
inch	1/2	3/4	1
mm	13	20	25
L	108	134	152
H	135	159	189
D	55	70	80

Fig. B10ESGN

## 10K BRONZE BURIED GATE VALVE WITH PVC FITTING

Screwed Bonnet, Rising Stem  
HIPVC Scket ends to JIS K 6742, 6741

Water 0°C to 45°C 1.0MPa



Parts	Material
Body	Bronze
Bonnet	Bronze
Stem	Brass (Dezincification-Resistant)
Disc	Bronze
O Ring	EPDM
Socket	HIPVC

\*This valve is not designed to handle toxic gas or flammable gas.

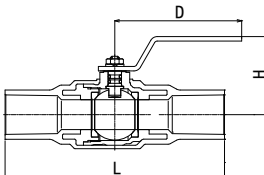
inch	1/2	3/4	1
mm	13	20	25
L	108	134	152
H	133	154	184
D	57	70	80

Fig. B10EMGN

## 10K BRASS BALL VALVE WITH PVC FITTING FULL BORE

HIPVC Socket ends to JIS K 6742,6741

Water 0°C to 45°C 1.0MPa



Parts	Material
Body	Brass
Stem	Brass (Dezincification-Resistant)
Packing	PTFE
Ball	Brass(Cr-Plating)
Ball Seat	PTFE
Body Cap	Brass
Socket	HIPVC

\*This valve is not designed to handle toxic gas or flammable gas.

inch	1/2	3/4	1
mm	13	20	25
L	115	147	160
H	49	53	61
D	85	85	115

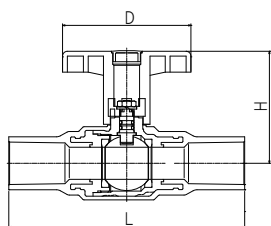
Fig. VH BEN

10K

10K BRONZE WING HANDLE BALL VALVE WITH PVC FITTING FULL BORE

HIPVC Socket ends to JIS K 6742, 6741

Water 0°C to 45°C 1.0MPa



Parts	Material
Body	Brass
Stem	Brass (Dezincification-Resistant)
Packing	PTFE
Ball	Brass(Cr-Plating)
Ball Seat	PTFE
Body Cap	Brass
Socket	HIPVC

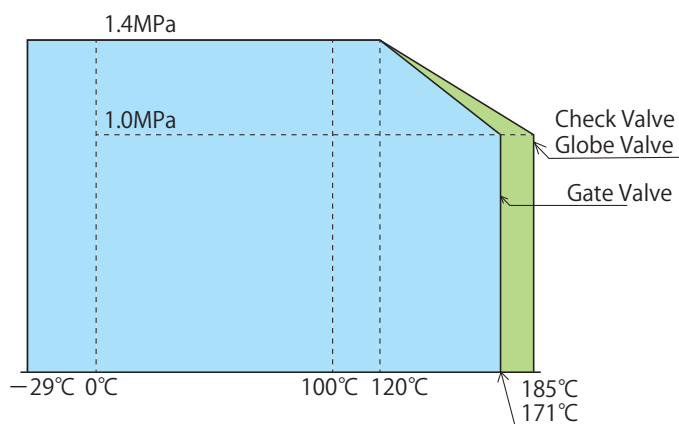
\*This valve is not designed to handle toxic gas or flammable gas.

inch	1/2	3/4	1
mm	13	20	25
L	115	147	160
H	67	71	79
D	80	80	90

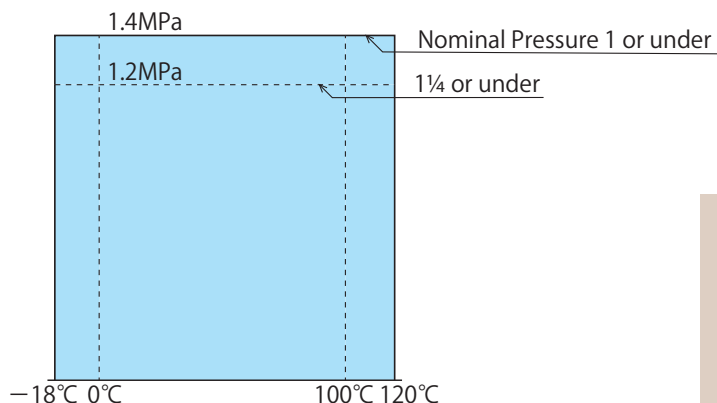
Fig. VHBEPN

## Pressure and temperature rating of JIS B2011

### ● Nominal Pressure 10K (Threaded ends)



### ● Nominal Pressure 10K (Solder Type Gate Valve and Check Valve)



1. Applicable fluids:  
Water, oil, gas, air, and steam. However, flammable gas and toxic gas are excluded. Moreover, the fluids shall not be frozen.

2. Non-applicable cases:  
If the use of valves is prohibited or limited by the High Pressure Gas Safety Act or other laws or ordinances, use the valve within the scope specified by such laws or ordinances.

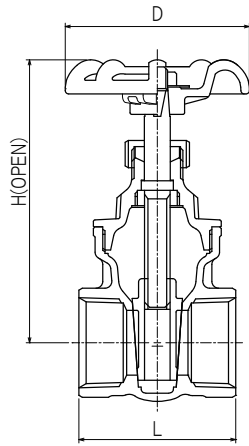
## CLASS 125 BRASS GATE VALVE

Screwed Bonnet  
Non Rising Stem  
Threaded ends to JIS B0203(BS21)

W.O.G 100°C 0.88MPa, Water Non-shock 100°C 1.2MPa



Fig. LIG



Parts	Material
Body	Brass
Bonnet	Brass
Stem	Brass
Disc	Brass
Packing	NBR

\*This valve is not designed to handle toxic gas or flammable gas.

inch	1/2	3/4	1	1 1/4	1 1/2	2	2 1/2	3
mm	15	20	25	32	40	50	65	80
L	42	46	50	59	61	72	89	101
H	73	83	94	114	123	148	183	210
D	54	54	61	77	77	83	105	112

BRONZE

BRASS

CAST IRON

BUTTERFLY

DUCTILE IRON

STAINLESS

AUTOMATIC

APPENDIX

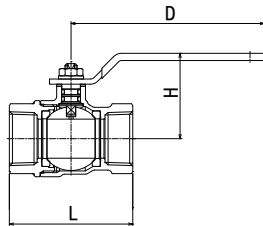
## CLASS 600 FORGED BRASS BALL VALVE FULL BORE

Screwed Body Cap  
Threaded ends to JIS B0203(BS21) or NPT

W.O.G -15°C to 120°C 4.2MPa



Fig. VEB



Parts	Material
Body	Brass
Cap	Brass
Ball	Brass(Cr-Plating)
Ball Seat	PTFE
Stem	Brass(Cr-Plating)
O RING	FKM

\*This valve is not designed to handle toxic gas or flammable gas.

inch	1/4	3/8	1/2	3/4	1	1 1/4	1 1/2	2
mm	8	10	15	20	25	32	40	50
L	44	44	49	60	72	83	87	102
H	33	33	35	42	54	59	74	80
D	76	76	76	94	121	121	152	152

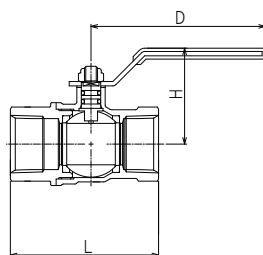
## CLASS 600 FORGED BRASS BALL VALVE FULL BORE

Screwed Body Cap  
Threaded ends to JIS B0203(BS21)

W.O. 4.2MPa, Air 1.0MPa, W.O.G 120°C 0.7MPa



Fig. VHB3



Parts	Material
Body	Brass
Stem	Stainless(SUS304)
Packing	PTFE
Ball	Brass(Cr-Plating)
Ball Seat	PTFE
Body Cap	Brass
O-Ring	FKM

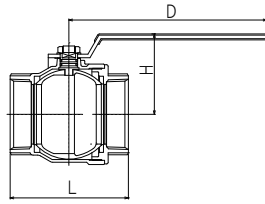
\*This valve is not designed to handle toxic gas or flammable gas.

inch	1/4	3/8	1/2	3/4	1	1 1/4	1 1/2	2
mm	8	10	15	20	25	32	40	50
L	50	50	65	68	79	86	96	110
H	37	37	40	44	50	55	65	72
D	70	70	80	80	110	110	150	150

## CLASS 400 FORGED BRASS BALL VALVE FULL BORE

Screwed Body Cap  
Threaded ends to JIS B0203(B521)

W.O. 2.8MPa, Air 1.0MPa, W.O.G 120°C 0.7MPa



Parts	Material
Body	Brass
Stem	Brass
Packing	PTFE
Ball	Brass(Cr-Plating)
Ball Seat	PTFE
Body Cap	Brass
O-Ring	FKM

\*This valve is not designed to handle toxic gas or flammable gas.

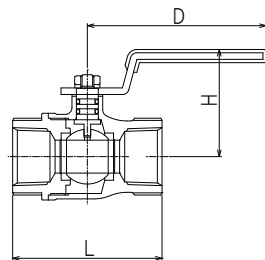
inch	2½	3
mm	65	80
L	138	167
H	110	121
D	250	250

Fig. VHB

## CLASS 400 FORGED BRASS BALL VALVE STANDARD BORE

Screwed Body Cap  
Threaded ends to JIS B0203(B521)

Water and Oil Non-shock 2.8MPa, Air 1.0MPa, W.O.G 120°C 0.7MPa



Parts	Material
Body	Brass
Stem	Brass
Packing	PTFE
Ball	Brass(Cr-Plating)
Ball Seat	PTFE
Body Cap	Brass
O-Ring	FKM

\*This valve is not designed to handle toxic gas or flammable gas.

inch	¾	1	1¼	1½	2	2½	3	4		
mm	10	15	20	25	32	40	50	65	80	100
L	50	65	68	79	86	96	109	127	153	179
H	46	49	52	59	63	68	80	86	110	121
D	86	101	101	116	116	116	131	131	250	250

Fig. V

## Diameter (bore) of ball valve

Three types of bores are offered depending on the size of actual diameter against nominal diameter of ball valves.

- Full bore  
Diameter of the same size as the nominal diameter
- Standard bore  
Diameter is one size smaller than the nominal diameter
- Reduced bore  
Diameter is two sizes smaller than the nominal diameter

EX)

Nominal Dia.	Dia.	Bore Type
1B(25A)	25mm	Full Bore
	20mm	Standard Bore
	15mm	Reduced Bore

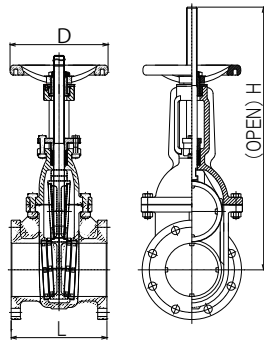
## 10K JIS 10K CAST IRON GATE VALVE

Bolted Bonnet, Outside Screw and Yoke  
Rising Stem, Flanged ends to JIS B2239  
Designed to JIS B2031

W.O.G 120°C 1.0MPa, Saturated steam 0.7MPa, Water Non-shock 120°C 1.4MPa



Fig. F10GE



Parts	Material
Body	Cast Iron
Bonnet	Cast Iron
Stem	Stainless(SUS420J1)
Disc	Bronze : 4 or under, Cast Iron : 5 or over
Body Seat Ring	Bronze
Disc Seat Ring	Bronze 5 or over
Packing	Non-Asbestos

\*This valve is not designed to handle toxic gas or flammable gas.

inch	2	2½	3	4	5	6	8	10	12
mm	50	65	80	100	125	150	200	250	300
L	180	190	200	230	250	270	290	330	350
H	346	391	469	545	638	740	940	1125	1329
D	190	190	210	240	260	270	300	350	390

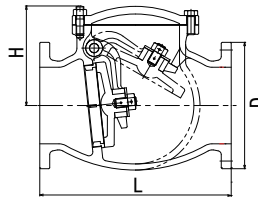
## 10K JIS 10K CAST IRON SWING CHECK VALVE

Bolted Cap  
Flanged ends to JIS B2239  
Designed to JIS B2031

W.O.G 120°C 1.0MPa, Saturated steam 0.7MPa, Water Non-shock 120°C 1.4MPa



Fig. F10CE



Parts	Material
Body	Cast Iron
Disc	Bronze
Cap	Cast Iron
Body Seat Ring	Bronze
Hinge Pin	Brass

\*This valve is not designed to handle toxic gas or flammable gas.

inch	2	2½	3	4	5	6	8	10	12
mm	50	65	80	100	125	150	200	250	300
L	200	220	240	290	360	400	500	620	700
H	125	135	150	170	195	225	260	348	376

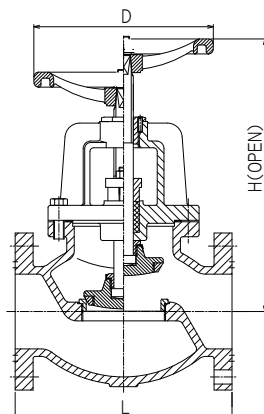
## 10K JIS 10K CAST IRON GLOBE VALVE

Bolted Bonnet, Rising Stem  
Flanged ends to JIS B2239  
Designed to JIS B2031\*

W.O.G 120°C 1.0MPa, Saturated steam 0.7MPa, Water Non-shock 120°C 1.4MPa



Fig. F10SE



Parts	Material
Body	Cast Iron
Bonnet	Cast Iron
Stem	Stainless(SUS420J1)
Disc	Cast Iron
Body Seat Ring	Bronze
Packing	Non-Asbestos

\*This valve is not designed to handle toxic gas or flammable gas.

\*Size 1½ to 8. Size 10 and 12 are Maker Standard.

inch	1½	2	2½	3	4	5	6	8	10	12
mm	40	50	65	80	100	125	150	200	250	300
L	190	200	220	240	290	360	410	500	620	700
H	248	266	304	314	366	452	509	621	710	883
D	160	180	190	210	240	260	270	350	450	500

## 10K CAST IRON DUAL PLATE WAFER CHECK VALVE

Water Hammer Absorption Type  
with By-pass  
Wafer connection to JIS 10K Flange

Water Non-shock 100°C 1.4MPa, Water and Air 100°C 1.0MPa

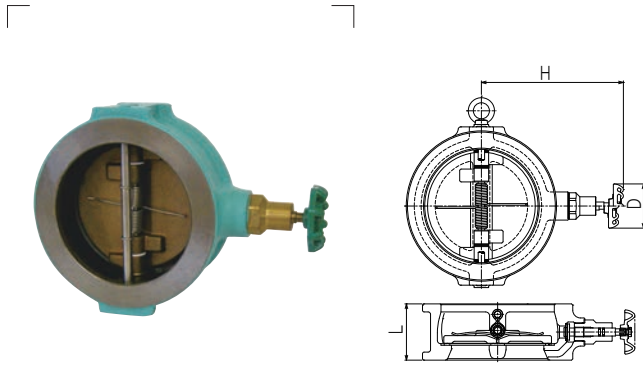


Fig. F10WC

Parts	Material
Body	Cast Iron
Plate	Bronze
Spring	Stainless(SUS304-WPB)
Bonnet	Brass
Stem	Brass
Seat	EPDM

\*This valve is not designed to handle toxic gas or flammable gas.

inch	2	2½	3	4	5	6	8	10	12
mm	50	65	80	100	125	150	200	250	300
L	54	56	60	66	70	76	95	108	144
H	133	147	154	167	180	204	231	263	289
D	55	55	55	55	55	55	55	55	55

## 10K CAST IRON Y-TYPE STRAINER

Bolted Cap  
Flanged ends to JIS B2239  
Stainless steel Screen

W.O.G 120°C 1.0MPa, Saturated steam 0.7MPa, Water Non-shock 120°C 1.4MPa

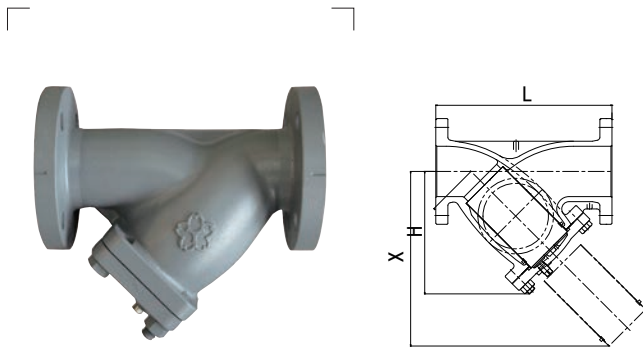


Fig. F10YE

Parts	Material
Body	Cast Iron
Cap	Cast Iron
Screen	Stainless(SUS304CP)
Gasket	Non-Asbestos

\*This valve is not designed to handle toxic gas or flammable gas.

inch	2	2½	3	4	5	6	8	10	12	14	16
mm	50	65	80	100	125	150	200	250	300	350	400
L	240	280	320	350	410	470	580	690	800	960	1050
H	150	187	219	244	292	343	447	536	601	704	779
X	214	270	322	347	423	506	609	720	831	1002	1106

## 10K CAST IRON BALL VALVE FULL BORE

Bolted Body Cap  
Flanged ends to JIS B2239

W.O.G 120°C 1.0MPa

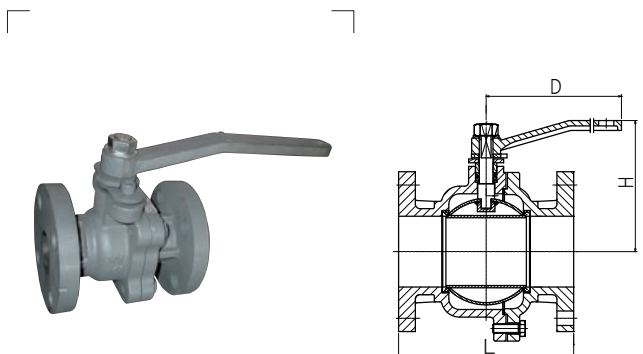


Fig. F10VE

Parts	Material
Body	Cast Iron
Stem	Stainless(SUS420J1)
Packing	PTFE
Cap	Cast Iron
Ball	Stainless(SUS304)
Ball Seat	PTFE

\*This valve is not designed to handle toxic gas or flammable gas.

inch	1½	2	2½	3	4	5	6	8
mm	40	50	65	80	100	125	150	200
L	165	180	190	200	230	265	277	340
H	134	139	153	162	172	250	262	303
D	271	271	271	500	500	1000	1000	1500

## ● Screen with special mesh specification for strainers

If you select the special mesh specification, a plain weave is attached to the internal side of the perforated plate. The aperture of each mesh is as follows.

Mesh	Opening (mm)
20	0.996
40	0.442
60	0.301
80	0.206

**(Reference)** According to the Japan Public Construction Work Standard Specifications (2007 edition), "The mesh shall be 40 mesh or larger for water use (80 mesh or larger if installed ahead of an electromagnetic valve) and 80 mesh or larger for steam use."

**(Note 1)** A corrosion-resistant sealing material may pass through the screen. If the passage of such materials is not allowed in terms of sanitation or other reasons, please take the appropriate measures such as using a filter in combination with the product.

**(Note 2)** Note that the following types of piping may cause damage to the screen.

- (1) Increase of pressure loss due to a clogged screen
- (2) Increase of pressure loss due to high flow rate (2 m/sec or higher)
- (3) Vibration or wearing of the screen that is installed just behind an elbow, valve, or pump

Use the product with pressure loss within 0.1 MPa.

In particular, screens with the high mesh specification are clogged earlier than other types, which may cause the screen to be damaged earlier. Install a pressure gauge ahead of and behind the strainer and be sure to check that the differential pressure is within 0.1 MPa before use. We assume no responsibility for screen damage caused by clogging.

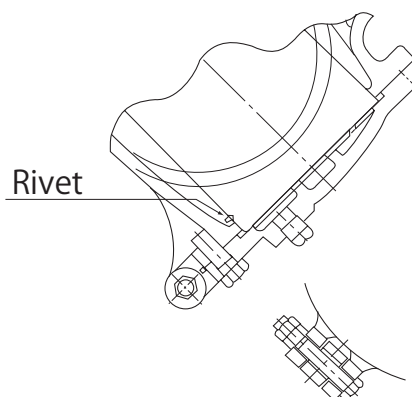
## ● Characteristics of F10YE, D16Y, and F10U

### 1. Drop prevention when taking out the screen

A rivet (the figure below) is mounted on the screen of the F10YE to prevent the screen from dropping. When taking out the screen, first rotate the screen so that the rivet is positioned at the groove of the main unit.

### 2. Retention of lid when taking out the screen

For the F10YE 200A and higher models, the hinge method is employed to retain the heavy lid.



### 3. Lifting for installation, etc.

For 200A and higher models, a lifting hole is created, making it easy to lift the product.

## 10K LEVER OPERATED ALUMINIUM BUTTERFLY VALVE

Wafer connection to JIS 10K Flange

W.O.G -20°C to 120°C , Max allowable pressure 1.0MPa, Max allowable pressure 1.0MPa, Continuous service temperature range -10°C to 70°C \*

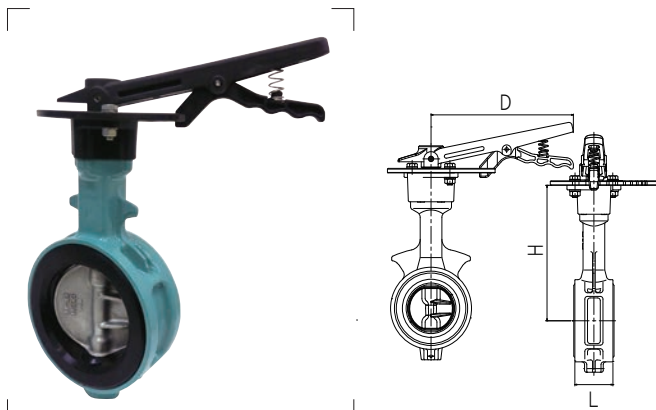


Fig. YZT

Parts	Material
Body	Aluminium
Disc	Stainless(SCS14)
Stem	Stainless(SUS420J2)
Seating	EPDM

\*This valve is not designed to handle toxic gas or flammable gas.

inch	2	2½	3	4	5	6
mm	50	65	80	100	125	150
L	43	46	46	52	56	56
H	206	219	207	232	260	295
D	160	160	160	200	200	300

## 10K GEAR OPERATED ALUMINIUM BUTTERFLY VALVE

Wafer connection to JIS 10K Flange

W.O.G -20°C to 120°C , Max allowable pressure 1.0MPa, Continuous service temperature range -10°C to 70°C \*

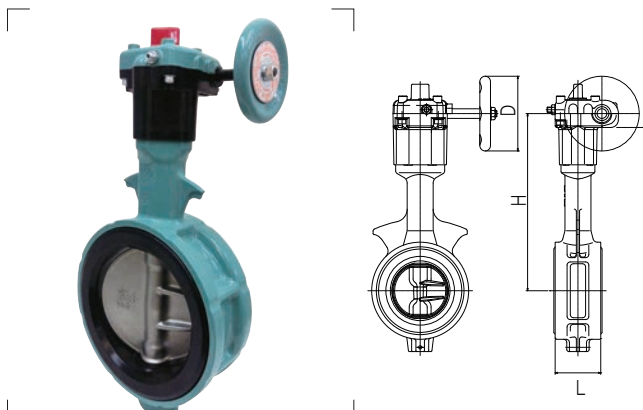


Fig. YZR

Parts	Material
Body	Aluminium
Disc	Stainless(SCS13)
Stem	Stainless(SUS420J2)
Seating	EPDM

\*This valve is not designed to handle toxic gas or flammable gas.

\*The continuous service temperature range : .

inch	2	2½	3	4	5	6	8	10	12
mm	50	65	80	100	125	150	200	250	300
L	43	46	46	52	56	56	60	68	78
H	201	214	207	218	261	272	320	416	448
D	70	70	70	70	100	100	125	200	200

\* The continuous service temperature range indicates the temperature range when the product is continually used for more than one hour. It assumes that internal fluid does not freeze.



## ● Piping Bolt

### YZT/YZR

Size		JIS 5K				JIS 10K			
		Hexagon head bolt/nut				Hexagon head bolt/nut			
A	B	No.	M	L	S	No.	M	L	S
50	2	4	M12	90	30	4	M16	100	40
65	2½	4	M12	100	30	4	M16	110	40
80	3	4	M16	100	40	8	M16	110	40
100	4	8	M16	110	40	8	M16	120	40
125	5	8	M16	110	40	8	M20	130	50
150	6	8	M16	120	40	8	M20	130	50
200	8	8	M20	130	50	12	M20	140	50
250	10	12	M20	140	50	12	M22	150	60
300	12	12	M20	150	50	16	M22	160	60

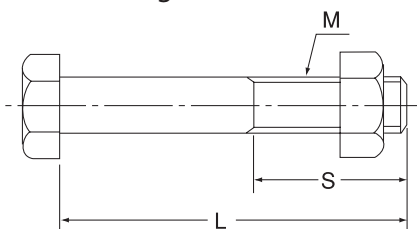
\*Gasket is unnecessary

### B10WC•F10WC

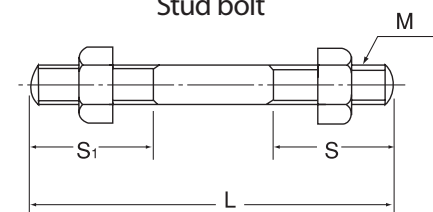
Size		JIS 10K				JIS 20K			
		Hexagon head bolt/nut				Hexagon head bolt/nut			
A	B	No.	M	L	S	No.	M	L	S
50	2	4	M16	120	38	8	M16	120	38
65	2½	4	M16	125	38	8	M16	130	44
80	3	8	M16	130	38	8	M20	150	52
100	4	8	M16	135	44	8	M20	150	52
125	5	8	M20	150	52	8	M22	170	56
150	6	8	M20	160	52	12	M22	190	56
200	8	12	M20	185	52	12	M22	230	75
250	10	12	M22	200	56	12	M24	250	75
300	12	16	M22	240	56	16	M24	290	75

\*Gasket is necessary

Hexagon head bolt



Stud bolt

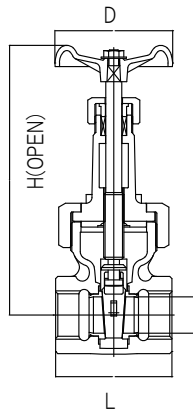


\*The bolt length shown in this table corresponds to the steel flange thickness of JIS. (For the 16K flange, the protruding portion is greater than the values in the table because the table shows the dimensions for the 20K flange.)

## 16K DUCTILE IRON GATE VALVE

Union Bonnet, Rising Stem  
Threaded ends to JIS B0203(B521)

W.O.G 220°C 2.0MPa, Water Non-shock 120°C 2.2 MPa



Parts	Material
Body	Ductile Iron
Bonnet	Ductile Iron
Stem	Stainless(SUS403)
Disc	Stainless(SCS1)
Packing	Non-Asbestos

\*This valve is not designed to handle toxic gas or flammable gas.

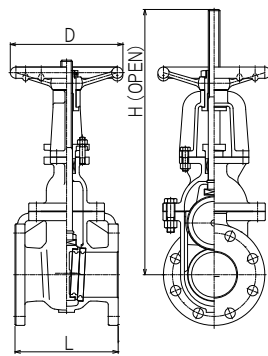
inch	1/2	3/4	1	1 1/4	1 1/2	2
mm	15	20	25	32	40	50
L	65	76	80	91	101	111
H	162	185	212	245	285	331
D	70	80	90	100	125	140

Fig. D16SG

## 16K DUCTILE IRON GATE VALVE

Bolted Bonnet, Rising Stem  
Outside screw and yoke  
Flanged ends to JIS B2220

W.O.G 220°C 2.0MPa, Water Non-shock 120°C 2.2 MPa



Parts	Material
Body	Ductile Iron
Bonnet	Ductile Iron
Stem	Stainless(SUS403)
Disc	Ductile Iron
Packing	Non-Asbestos
Gasket	Non-Asbestos

\*This valve is not designed to handle toxic gas or flammable gas.

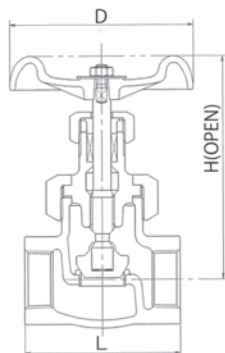
inch	2	2 1/2	3	4	5	6
mm	50	65	80	100	125	150
L	178	190	203	229	254	267
H	391	410	466	589	673	765
D	180	180	200	250	280	300

Fig. D16G

## 16K DUCTILE IRON GLOBE VALVE

Union Bonnet, Rising Stem  
Threaded ends to JIS B0203(B521)

W.O.G 220°C 2.0MPa, Water Non-shock 120°C 2.2 MPa



Parts	Material
Body	Ductile Iron
Bonnet	Ductile Iron
Stem	Stainless(SUS420J2)
Disc	Stainless(SUS403)
Packing	Non-Asbestos

\*This valve is not designed to handle toxic gas or flammable gas.

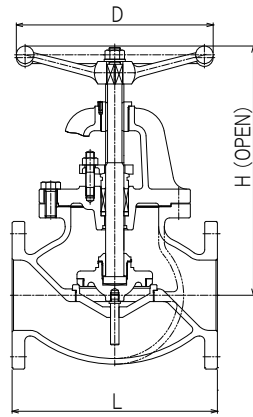
inch	1/2	3/4	1	1 1/4	1 1/2	2
mm	15	20	25	32	40	50
L	70	85	95	110	125	145
H	122	128	147	165	182	196
D	80	80	100	115	115	135

Fig. D16SS

## 16K DUCTILE IRON GLOBE VALVE

Bolted Bonnet, Rising Stem  
Flanged ends to JIS B2220

W.O.G 220°C 2.0MPa, Water Non-shock 120°C 2.2 MPa



Parts	Material
Body	Ductile Iron
Bonnet	Ductile Iron
Stem	Stainless(SUS403)
Disc	Stainless(SUS2) : 2½, 3, Ductile Iron : 3 or over
Packing	Non-Asbestos
Gasket	Non-Asbestos

\*This valve is not designed to handle toxic gas or flammable gas.

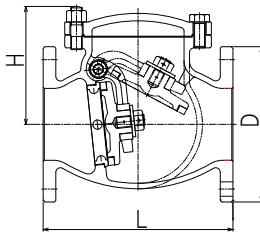
inch	2	2½	3	4	5	6	8
mm	50	65	80	100	125	150	200
L	203	216	241	292	356	406	495
H	289	309	347	394	449	517	621
D	180	180	224	280	300	355	450

Fig. D16S

## 16K DUCTILE IRON SWING CHECK VALVE

Bolted Cap  
Flanged ends to JIS B2220

W.O.G 220°C 2.0MPa, Water Non-shock 120°C 2.2 MPa



Parts	Material
Body	Ductile Iron
Disc	Stainless(SUS403) : 2 to 5 Ductile Iron : 6, 8
Gasket	Non-Asbestos
Body Cap	Ductile Iron
Hinge Pin	Stainless(SUS403)

\*This valve is not designed to handle toxic gas or flammable gas.

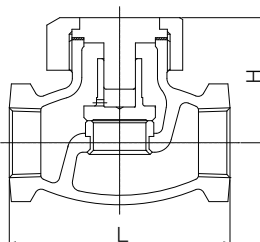
inch	2	2½	3	4	5	6	8
mm	50	65	80	100	125	150	200
L	203	216	241	292	330	356	495
H	127	138	160	178	205	230	270

Fig. D16C

## 16K DUCTILE IRON LIFT CHECK VALVE

Union Bonnet  
Threaded ends to JIS B0203(B521)

W.O.G 220°C 2.0MPa, Water Non-shock 120°C 2.2 MPa



Parts	Material
Body	Ductile Iron
Disc	Stainless(SUS403)
Gasket	Non Asbestos

\*This valve is not designed to handle toxic gas or flammable gas.

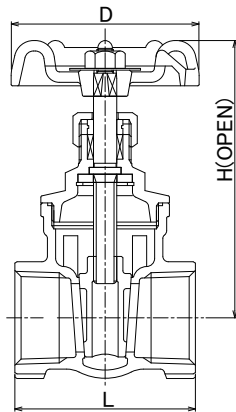
inch	½	¾	1	1½	1¼	2
mm	15	20	25	32	40	50
L	75	90	105	120	135	160
H	49	51	58	66	75	86

Fig. D16SLCH

## 10K CAST STAINLESS STEEL GATE VALVE

Screwed Bonnet  
Non-Rising Stem  
Threaded ends to JIS B0203(BS21)

W.O.G 120°C 1.4MPa, Saturated steam 150°C 0.4MPa



Parts	Material
Body	Stainless(SCS13A)
Bonnet	Stainless(SCS13A)
Stem	Stainless(SUS304)
Disc	Stainless(SCS14A)
Packing	Non-Asbestos

\*This valve is not designed to handle toxic gas or flammable gas.

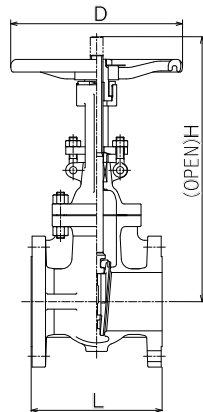
inch	1/2	3/4	1	1 1/4	1 1/2	2
mm	15	20	25	32	40	50
L	54	58	66	75	78	87
H	85	95	103	122	136	158
D	55	63	70	80	80	90

Fig. S10SG

## 10K CAST STAINLESS STEEL GATE VALVE

Bolted Bonnet  
Rising Stem  
Flanged ends to JIS B2220

W.O.G 180°C 1.28MPa, 120°C 1.4MPa



Parts	Material
Body	Stainless(SCS13A)
Bonnet	Stainless(SCS13A)
Stem	Stainless(ASTM A276-304)
Disc	Stainless(ASTM A351-CF8)
Packing	Non Asbestos
Gasket	Non Asbestos

\*This valve is not designed to handle toxic gas or flammable gas.

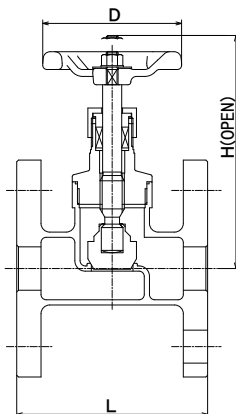
inch	2 1/2	3	4	5	6	8
mm	65	80	100	125	150	200
L	190	203	229	254	267	292
H	403	453	544	650	740	944
D	175	185	210	300	300	350

Fig. S10GOH

## 10K CAST STAINLESS STEEL GLOBE VALVE

Rising Stem  
Flanged ends to JIS B2220

W.O.G 180°C 1.0MPa, 120°C 1.4MPa



Parts	Material
Body	Stainless(SCS13A)
Bonnet	Stainless(SCS13A)
Stem	Stainless(SUS304)
Disc	Stainless(SUS304)
Packing	Non Asbestos

\*This valve is not designed to handle toxic gas or flammable gas.

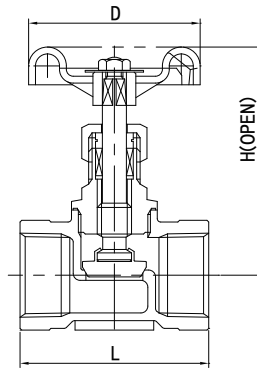
inch	1/2	3/4	1	1 1/4	1 1/2	2
mm	15	20	25	32	40	50
L	85	95	110	130	150	180
H	105	115	135	150	170	190
D	60	80	100	100	100	100

Fig. S10SH

## 10K CAST STAINLESS STEEL GLOBE VALVE

Screwed Bonnet, Rising Stem  
Threaded ends to JIS B0203(BS21)

W.O.G 120°C 1.4MPa, Saturated steam 150°C 0.4MPa



Parts	Material
Body	Stainless(SCS13A)
Bonnet	Stainless(SCS13A)
Stem	Stainless(SUS304)
Disc	Stainless(SUS316)
Packing	PTFE

\*This valve is not designed to handle toxic gas or flammable gas.

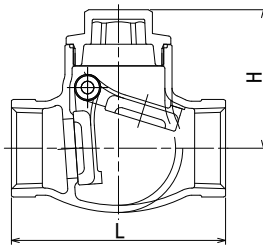
inch	1/2	3/4	1	1 1/4	1 1/2	2
mm	15	20	25	32	40	50
L	52	60	72	80	90	100
H	80	86	93	105	124	138
D	55	63	70	80	90	100

Fig. S10SS

## 10K CAST STAINLESS STEEL SWING CHECK VALVE

Screwed Cap  
Threaded ends to JIS B0203(BS21)

W.O.G 120°C 1.4MPa, Saturated steam 150°C 0.4MPa



Parts	Material
Body	Stainless(SCS13A)
Bonnet	Stainless(SCS13A)
Disc	Stainless(SCS13A)
Gasket	PTFE
Hinge Pin	Stainless(SUS316)

\*This valve is not designed to handle toxic gas or flammable gas.

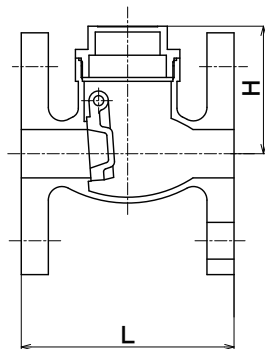
inch	1/2	3/4	1	1 1/4	1 1/2	2
mm	15	20	25	32	40	50
L	65	80	90	105	120	140
H	44	49	58	65	74	86

Fig. S10SC

## 10K CAST STAINLESS STEEL SWING CHECK VALVE

Screwed Cap  
Flanged ends to JIS B2220

W.O.G 180°C 1.0MPa, 120°C 1.4MPa



Parts	Material
Body	Stainless(SCS13A)
Bonnet	Stainless(SCS13A)
Disc	Stainless(SCS13A)
Gasket	RPTFE
Hinge pin	Stainless(SUS316)

\*This valve is not designed to handle toxic gas or flammable gas.

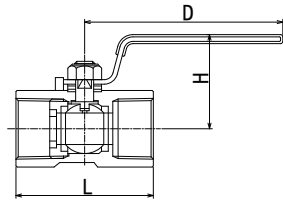
inch	1/2	3/4	1	1 1/4	1 1/2	2
mm	15	20	25	32	40	50
L	85	95	110	130	150	180
H	52	57	62	70	75	80

Fig. S10CH

**CLASS 600** CAST STAINLESS STEEL BALL VALVE REDUCED BORE

One-piece Body  
Threaded ends to JIS B0203(BS21)

W.O. 4.2MPa, Air 1.0MPa, W.O. 180°C 1.0 MPa



Parts	Material
Body	Stainless(SCS13A)
Stem	Stainless(SUS316)
Packing	RPTFE
Ball	Stainless(SUS316)
Ball Seat	RPTFE

\*This valve is not designed to handle toxic gas or flammable gas.

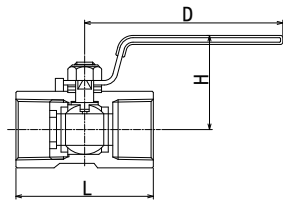
inch	3/8	1/2	3/4	1	1 1/4	1 1/2	2
mm	10	15	20	25	32	40	50
L	44	57	59	71	78	83	100
H	36	40	45	51	58	63	70
D	63	96	96	106	110	140	140

Fig. VU3

**CLASS 600** CAST STAINLESS STEEL BALL VALVE REDUCED BORE

One-piece Body  
Threaded ends to JIS B0203(BS21)

W.O. 7.0 MPa, Air 1.0MPa, W.O. 180°C 1.0 MPa



Parts	Material
Body	Stainless(SCS14A)
Stem	Stainless(SUS316)
Packing	RPTFE
Ball	Stainless(SUS316)
Ball Seat	RPTFE

\*This valve is not designed to handle toxic gas or flammable gas.

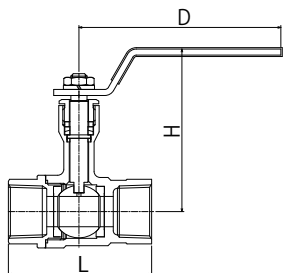
inch	3/8	1/2	3/4	1	1 1/4	1 1/2	2
mm	10	15	20	25	32	40	50
L	44	57	59	71	78	83	100
H	36	40	45	51	58	63	70
D	63	96	96	106	110	140	140

Fig. VU

**CLASS 1000** CAST STAINLESS STEEL BALL VALVE STANDARD BORE

Screwed Body Cap  
Threaded ends to JIS B0203(BS21)

W.O. 4.2MPa, W.O. 160°C 1.0 MPa



Parts	Material
Body	Stainless(SCS13A)
Stem	Stainless(SUS304)
Packing	PTFE
Ball	Stainless(SUS304)
Ball Seat	PTFE
Body Cap	Stainless(SCS13A)

\*This valve is not designed to handle toxic gas or flammable gas.

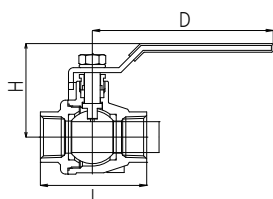
inch	1/2	3/4	1	1 1/4	1 1/2	2
mm	15	20	25	32	40	50
L	60	70	80	96	108	124
H	76	80	85	98	106	113
D	100	100	130	130	150	150

Fig. VUJ

# 10K CAST STAINLESS STEEL BALL VALVE FULL BORE

Screwed Body Cap  
Threaded ends to JIS B0203(BS21)

Water 100°C 1.0MPa, Water Non-shock 100°C 1.0 MPa



Parts	Material
Body	Stainless(SCS14A)
Stem	Stainless(SUS316)
Packing	PTFE
Ball	Stainless(SUS316)
Ball Seat	PTFE
Body Cap	Stainless(SCS14A)

\*This valve is not designed to handle toxic gas or flammable gas.

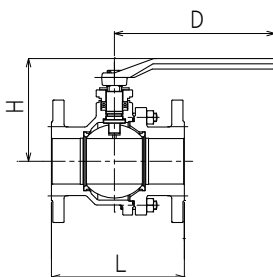
inch						
mm	15	20	25	32	40	50
L	68	74	86	100	110	130
H	56	66	80	86	94	101
D	105	112	148	148	184	184

Fig. SVHB

# 10K CAST STAINLESS STEEL BALL VALVE FULL BORE

Bolted Body Cap  
Flanged ends to JIS B2220

Water 120°C 1.0MPa, Water Non-shock 120°C 1.4 MPa



Parts	Material
Body	Stainless(SCS13A)
Stem	Stainless(SUS304)
Packing	PTFE
Ball	Stainless(SUS304)
Ball Seat	RPTFE
Body Cap	Stainless(SCS13A)

\*This valve is not designed to handle toxic gas or flammable gas.

inch	1/2	3/4	1	1 1/4	1 1/2	2	2 1/2	3	4	5	6	8
mm	15	20	25	32	40	50	65	80	100	125	150	200
L	108	117	127	140	165	178	190	203	229	356	394	457
H	75	78	97	104	109	124	144	175	199	294	313	361
D	120	120	180	180	180	230	230	400	400	1000	1000	1400

Fig. S10V

# Electric Actuator Series

We respond to various needs for options and special specifications

## DES TYPE

- > Compact size, High power and Low noise
- > Stainless steel exterior bolting
- > Adoption of spur gear which has high reliability and durability in the reduction gear system

Specification		DES			
Voltage(Single-phase)		AC24V	AC100V	AC200V	DC24V
Rated current(A)	AC(50/60Hz)	0.18/0.2	0.06/0.07	0.05/0.06	-
	DC				0.1
Valve open/close time	AC(50/60Hz)	24.7s/20s			
	DC				4s
Rated output troque(Nm)		6			
Ambient temp.		-10 to 50			
IP Code		IP54			
Insulation class		Class E			



## DEH TYPE

- > Compact size and High power
- > Stainless steel exterior bolting
- > Space heater contained
- > Various option is available (potentiometer, explosion-proof, etc)

Specification		DEH006	DEH010	DEH020	DEH030	DEH050	DEH060
Voltage	AC100V(50/60Hz)						
	AC200V(50/60Hz)						
	DC24V					-	-
Related current	AC100V(50/60Hz)	0.38/0.39	0.97/0.95	1.37/1.71	1.41/1.92	2.80/2.85	3.04/4.04
	AC200V(50/60Hz)	0.20/0.24	0.52/0.49	0.72/0.86	0.66/1.02	1.34/1.07	1.29/1.47
	DC24V	0.4	0.81	3	3.2	-	-
Valve open/close time	AC(50/60Hz)	14s/12s	20s/17s	25s/21s	31s/26s	31s/26s	
	DC	10s	10s	14s	19s	-	
Rated output troque(Nm)		58.8	98	196	294	490	588
Power consumption(W)		6	15	40		90	
Number of manual rotations		8	10	11	13.5	13.5	
Ambient temp.		-20 to 70°C					
IP Code		IP67					
Insulation class		Class E					
Troque Switch		x					
Manual override		Plug	Handwheel				
Cable entries		2×PF½					



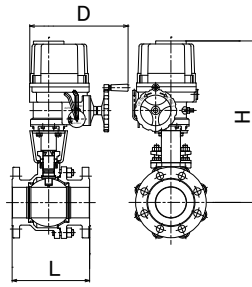
Please contact us for more information



**10K CAST STAINLESS STEEL BALL VALVE WITH ELECTRIC ACTUATOR**

ON-OFF Type  
Flanged ends to JIS B2220

W.O.G 0 to 80°C , Max allowable pressure 1.0MPa



**Fig. E-SUSF**

Parts	Material
Body	Stainless(SCS13A)
Stem	Stainless(SUS304)
Packing	PTFE
Ball	Stainless(SUS304)
Ball Seat	RPTFE
Body Cap	Stainless(SCS13A)

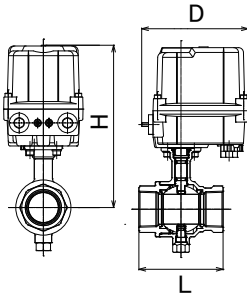
\*This valve is not designed to handle toxic gas or flammable gas.

inch	1/2	3/4	1	1 1/4	1 1/2	2	2 1/2	3	4	5	6	8
mm	15	20	25	32	40	50	65	80	100	125	150	200
L	108	117	127	140	165	178	190	203	229	356	394	457
H	217	219	223	231	236	262	280	423	484	543	576	643
D	141	141	141	141	141	141	141	258	338	368	368	368

**10K CAST BRONZE BALL VALVE FULL BORE WITH ELECTRIC ACTUATOR**

ON-OFF Type  
Threaded ends to JIS B0203(BS21)

W.O.G -20°C to 120°C , Max allowable pressure 1.0MPa



**Fig. E-BLES**

Parts	Material
Body	Bronze
Stem	Stainless(SUS304)
Ball	Stainless(SCS13)
Ball Seat	PTFE
Body Cap	Bronze

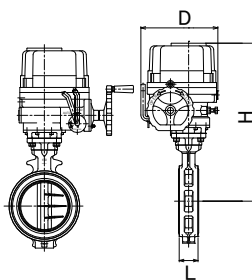
\*This valve is not designed to handle toxic gas or flammable gas.

inch	1/2	3/4	1	1 1/4	1 1/2	2
mm	15	20	25	32	40	50
L	63	72	84	98	111	132
H	124	129	133	207	214	222
D	95	95	95	130	130	130

**10K CAST ALUMINIUM BUTTERFLY VALVE WITH ELECTRIC ACTUATOR**

ON-OFF Type  
Wafer connection to JIS 10K Flange

W.O.G 0 to 80°C , Max allowable pressure 1.0MPa



**Fig. E-2BYZ**

Parts	Material
Body	Aluminium
Disc	Stainless(SCS14)
Stem	Stainless(SUS420J2)
Seatring	EPDM

\*This valve is not designed to handle toxic gas or flammable gas.

inch	2	2 1/2	3	4	5	6	8	10	12
mm	50	65	80	100	125	150	200	250	300
L	43	46	46	52	56	56	60	68	78
H	271	284	290	301	443	470	517	584	616
D	130	130	130	130	258	338	368	368	368

BRONZE

BRASS

CAST IRON

BUTTERFLY

DUCTILE IRON

STAINLESS

AUTOMATIC

APPENDIX

# Valve adjustment

- (1) Rotate the handle of the valve at no-load state and perform opening and closing operations a few times to check that it moves smoothly.
- (2) For the gland packing, although it is tightened to the proper torque when shipped from the factory, during the period before initial use, it may become prone to leakage due to stress relaxation. Before passing a fluid, be sure to retighten the nut for retaining the packing. When retightening, raise and lower the valve rod by rotating the handle to obtain affinity between the packing and the valve rod, while checking the operating force of the handle so that right and left sides are evenly tightened and uneven clamping can be prevented.
- (3) After installation of the piping, remove foreign matter in the piping by blowing or flushing with air, nitrogen gas, or water, according to the on-site conditions.

## Be careful when installing valves

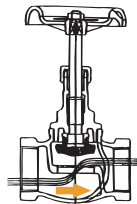
### Removal of protective pads



Failure to observe this instruction disables valve function.

### Match the flow direction with the arrow on the main unit

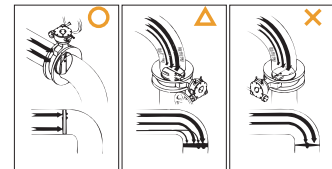
(globe valve, check valve, eccentric butterfly valve, etc.)



Failure to observe this instruction leads to malfunctioning.

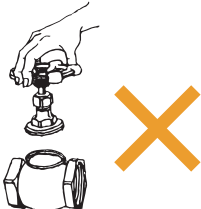
### Confirmation of mounting orientation

(butterfly valve, double-blade check valve, etc.)



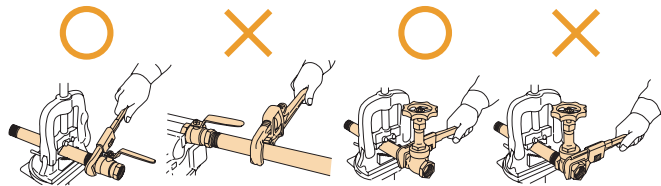
Failure to observe this instruction leads to malfunctioning.

### No disassembly



### How to use a wrench

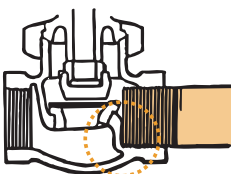
(hang the wrench on the screw side)



Failure to observe this instruction may cause deformation, leading to sheet leakage.

### Do not excessively screw in the pipe

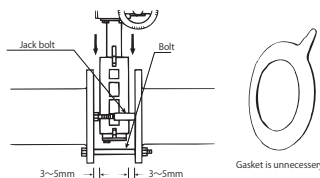
(not to butt)



Failure to observe this instruction may deform the valve.

### Installation of a center type butterfly valve

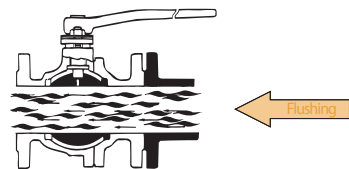
(correctly install piping)



Failure to observe this instruction may cause leakage.

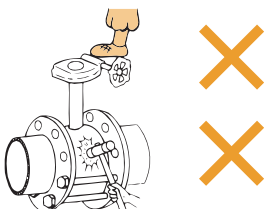
### Flushing

(clean the inside of the piping)



Failure to observe this instruction may cause sheet leakage or equipment failure.

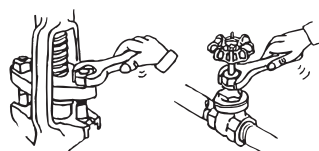
### Handling of valve



Handle the valve with care.

### Retightening of the packing

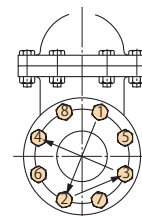
(retighten before use)



It prevent gland leakage.

### Tightening of installation bolts

(tightening procedure of flange installation bolt)



Prevent uneven clamping.

# Certification

BRONZE

BRASS

CAST IRON

BUTTERFLY

DUCTILE IRON

STAINLESS

AUTOMATIC

APPENDIX

## Yamato Valve Quality Policies

1. Develop products responding to customer needs
2. Take up the challenge to develop new technologies and products
3. Enrich education and training

## Yamato Valve Hikone plant



Our Hikone Factory has acquired ISO 9001:2015 certification as shown below. With our quality policies, "Develop products responding to customer needs," "Take up the challenge to develop new technologies and products," and "Enrich education and training," all employees are working together to further improve quality. The Hikone Factory has also acquired ISO 14001:2015 certification. At the factory, all employees are united and participating in environmental activities for the future of earth.

ISO 9001 - Certification body:  
PJR (Perry Johnson Registrars)

- Applicable standards:  
ISO 9001 : 2015
- Scope of registration:  
Development and manufacturing of gate valve globe valve, check valve, ball valve, and strainer
- Initial registration date : June 2, 2000
- Registration date of 2015 version : May 10, 2017
- Subject : Yamato Valve Co., Ltd. Hikone Factory

ISO 14001 - Certification body:  
PJR (Perry Johnson Registrars)

- Applicable standards:  
ISO 14001 : 2015
- Scope of registration:  
Manufacturing and sales of valve (gate valve, globe valve, etc.) and strainer
- Registration date : May 10, 2017
- Subject : Hikone Factory





Yamato

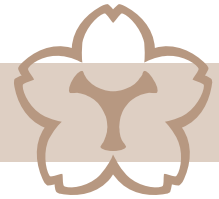
Effective Flow

System



To create a prosperous society and respond to future needs, we answer "YES."  
YES is an abbreviation of our catch phrase, Yamato Effective Flow System. It represents the corporate attitude of Yamato Valve aiming to accurately identify customer needs to continue to develop in the new century through more effective and swift business activities focused on manufacturing and sales of valves.

## Contact



### Head Office :

1F, Sumitomo Fudosan Osaki Garden Tower  
1-1-1 Nishi Shinagawa, Shinagawa-ku, Tokyo, 141-0033 Japan  
Tel : +81-3-3492-6218  
E-mail address : overseas@yamatovalve.com

### Daimaru Industrial Co., Ltd.

422 Nishitsuzura-machi, Hikone-shi, Shiga, Japan

### Dalian Daimaru Industry Co., Ltd.

Lushun N Rd, Lushunkou Direct, Dalian City,  
Liaoning Province, P.R. China



**Yamato Valve Co., Ltd.**

<http://www.yamatovalve.co.jp/english/>