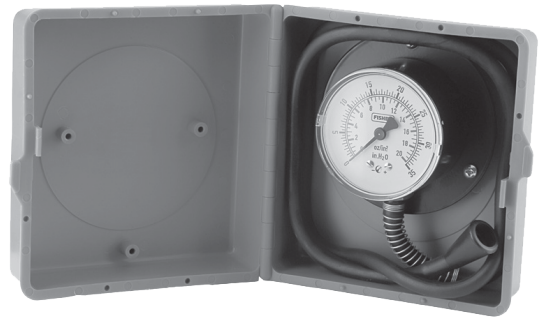


50 and J500 Series Pressure Gauges



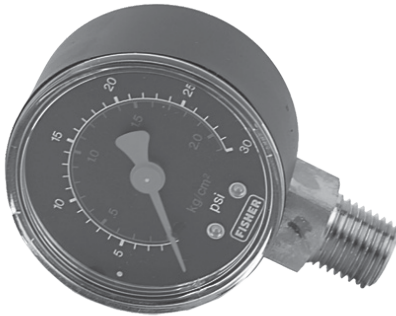
P1020

Figure 1. Type 50-2 Gauge



P1021

Figure 2. Type 50P-2 Gauge in Plastic Carrying Case



P1043

Figure 3. Type J501 Gauge with Bottom Connection



P1044

Figure 4. Type J510 Gauge with Back Connection

Features

- **Versatility**—A comprehensive selection of ranges, units, and connections meets requirements for a large assortment of pressure measurements.
- **High Visibility**—A slim black pointer pivots over easy-to-read black symbols against a white background. Red pointer, white symbols, and black background for J500 Series.
- **Convenient Connections**—Most J500 Series gauges can be connected at the back for compact installations where space is limited. Type 50P-2 gauges measure pressure remotely through a flexible hose.



Bulletin 71.8:50

Table 1. Pressure Gauge Guide

TYPICAL APPLICATION	GAUGE DESIGNATION	CONNECTION	FACE DIAMETER		OTHER FEATURE
			Inch	mm	
Low pressure measurements: often used in place of manometers, "U" tubes, or water columns	Type 50-2	1/4-inch NPT on bottom	2.5	63,5	----
	Type 50P-2	3 feet (0,91 m) flexible hose			Mounted in plastic carrying case. Case is 2.25 x 5 x 6-inch (57,2 x 127 x 152 mm)
Used with pneumatic instrumentation	J500 Series	1/4-inch NPT on bottom, back, or top	2.0*	50,8*	Selected gauges are available for ammonia service

*Except as noted in Table 3.

Table 2. Types 50-2 and 50P-2 Dual Range Gauges

DOUBLE CALIBRATION		
CALIBRATION	TYPE NUMBER	PART NUMBER
0 to 35-inches w.c. (0 to 87 mbar) and 0 to 20 ounces/inch ²	50-2	AA4854000A2
	50P-2	AA4856000G2

*Standard range

Introduction

The 50 and J500 Series are an assortment of pressure gauges used to handle a wide variety of pressure measurements both in the laboratory and in the field.

A pressure gauge guide (Table 1) summarizes the product line and aids in matching a series to your particular needs. Detailed information on each gauge within a series, including the pressure range and part number, is available throughout the remainder of the bulletin.

Types 50-2 and 50P-2

These gauges are housed in a ABS Terluran® black plastic case with a molded plastic window. As indicated in Table 1, the Type 50P-2 gauge differs from the Type 50-2 gauge only in that they measure pressure

through a flexible hose instead of a 1/4-inch threaded NPT connection. The Type 50-2 gauge, shown in Figure 1, is calibrated in 0 to 20 ounces per square inch and in 0 to 35-inches w.c.. Figure 2 shows the same gauge, designated as Type 50P-2, mounted in a plastic carrying case. Table 2 describes the calibration available in these types.

J500 Series

These gauges are housed in a ABS Terluran® black plastic case with a molded plastic window and feature the choice of having the 1/4-inch threaded NPT connection on either the bottom, back, or top of the case as shown in Figures 3 and 4. Table 3 describes the calibration available in this series.

Terluran® is a trademark of BASF.

Table 3. J500 Series Scale Gauges for Multiple Measurements

TYPE NUMBER	CONNECTION LOCATION	RANGE	PART NUMBER
J500	Bottom	0 to 15 psig, 0.1 MPa, 1,0 bar	11B8580X012
J501		0 to 30 psig, 0 to 2 kg/cm ²	11B8580X052
J502		0 to 60 psig, 0.4 MPa, 4,0 bar	11B8580X022
J504		0 to 160 psig, 1.1 MPa, 11,0 bar	11B8580X032
J506		0 to 300 psig, 2 MPa, 20,0 bar	11B8580X042
J510	Back	0 to 15 psig, 0.1 MPa, 1,0 bar	11B8579X012
J511		0 to 30 psig, 0.2 MPa, 2,0 bar	11B8579X022
J512		0 to 60 psig, 0.4 MPa, 4,0 bar	11B8579X032
J514		0 to 160 psig, 1.1 MPa, 11,0 bar	11B8579X042
J516		0 to 300 psig, 2.0 MPa, 20,0 bar	11B8579X052
J518		0 to 2 kg/cm ² , 30 psig	11B8579X062
J519		0 to 4 kg/cm ² , 60 psig	11B8579X072
J531		Top	0 to 60 psig, 0.4 MPa, 4,0 bar
J532	0 to 160 psig, 1.1 MPa, 11,0 bar		11B8582X032
J539	Back	0 to 11 kg/cm ² , 160 psig	11B8579X082
J541 ⁽¹⁾		0 to 60 psig (0 to 27,6 bar) for anhydrous ammonia (NH ₃) service	11B9639X022
J542 ⁽¹⁾⁽²⁾	Bottom	0 to 400 psig (0 to 4,14 bar) for LP-Gas and anhydrous ammonia (NH ₃) service	T1094738992
J551		0 to 30 psig, 0.2 MPa, 2,0 bar	11B8580X062
1. Casing made of Stainless steel for ammonia service. 2. Face diameter is 2.5-inches (63,5 mm).			

Ordering Information

Use the pressure gauge guide (Table 1) to determine which type/series of gauge meets your measurement needs. Then use the information in the remainder of the bulletin to select the specific gauge or gauges for your requirement.

Describe the gauge completely as follows:

1. When ordering Types 50-2 and 50P-2 gauges, specify quantity, type number, and part number.
2. When ordering J500 Series gauges, specify quantity, type number, and part number. Also specify bottom, back, or top.

Industrial Regulators

Emerson Process Management Regulator Technologies, Inc.

USA - Headquarters
McKinney, Texas 75069-1872 USA
Tel: 1-800-558-5853
Outside U.S. 1-972-548-3574

Asia-Pacific
Shanghai, China 201206
Tel: +86 21 2892 9000

Europe
Bologna, Italy 40013
Tel: +39 051 4190611

Middle East and Africa
Dubai, United Arab Emirates
Tel: +971 4811 8100

For further information visit www.emersonprocess.com/regulators

Natural Gas Technologies

Emerson Process Management Regulator Technologies, Inc.

USA - Headquarters
McKinney, Texas 75069-1872 USA
Tel: 1-800-558-5853
Outside U.S. 1-972-548-3574

Asia-Pacific
Singapore, Singapore 128461
Tel: +65 6777 8211

Europe
Bologna, Italy 40013
Tel: +39 051 4190611
Gallardon, France 28320
Tel: +33 (0)2 37 33 47 00

TESCOM

Emerson Process Management Tescom Corporation

USA - Headquarters
Elk River, Minnesota 55330-2445 USA
Tel: 1-763-241-3238

Europe
Selmsdorf, Germany 23923
Tel: +49 (0) 38823 31 0

The Emerson logo is a trademark and service mark of Emerson Electric Co. All other marks are the property of their prospective owners. Fisher is a mark owned by Fisher Controls, Inc., a business of Emerson Process Management.

The contents of this publication are presented for informational purposes only, and while every effort has been made to ensure their accuracy, they are not to be construed as warranties or guarantees, express or implied, regarding the products or services described herein or their use or applicability. We reserve the right to modify or improve the designs or specifications of such products at any time without notice.

Emerson Process Management does not assume responsibility for the selection, use or maintenance of any product. Responsibility for proper selection, use and maintenance of any Emerson Process Management product remains solely with the purchaser.