

BV Brook Valves

BALL VALVES

**BUTTERFLY
VALVES**

GLOBE VALVES

GATE VALVES

CHECK VALVES

KNIFE VALVES

Y STRAINERS

ACTUATION



www.brookvalves.com.au



V2F-150
2 PIECE FLANGED
ANSI 150 BALL VALVE
316 Stainless Steel
Full bore
15mm to 300mm
Also available drilled AS2129 Table E
And undrilled



V2FISO-150
2 PIECE FLANGED
ANSI 150 BALL VALVE
316 Stainless Steel
ISO MOUNT Full bore
15mm to 300mm
Available undrilled



V2FH-300UD
2 PIECE FLANGED
ANSI 300 BALL VALVE
316 Stainless Steel
Full bore, ISO Direct Mount
15mm to 300mm
Undrilled



SS2020D-150
2 PIECE FLANGED
ANSI 150 BALL VALVE
Firesafe Certified
ISO Direct Mount
316 Stainless Steel
Full Bore TFM1600 seats
15mm to 300mm
Lockable lever to 150mm
Gear operator over 150mm



SS2020N-300
2 PIECE FLANGED
ANSI 300 BALL VALVE
Firesafe Certified
316 Stainless Steel
Full Bore TFM1600 seats
15mm to 250mm
Lockable lever to 150mm
Gear operator over 150mm



3WAYL/3WAYT-ISO-150
3 WAY FLANGED
ANSI 150 BALL VALVE
316 Stainless Steel
TMF1600 seats
ISO MOUNT Full bore
L or T port
25mm to 250mm



3WAYL/3WAYT-150
3 WAY FLANGED
ANSI 150 BALL VALVE
316 Stainless Steel
Full bore
L or T port
25mm to 150mm
Available undrilled



3WAYL/3WAYT -ISO
3 WAY BSP
316 Stainless Steel
High Temp TFM1600 seat
Full Bore L or T port
ISO MOUNT Lever operated
8mm to 50mm BSP
1000 PSI



3WAYL/3WAYT
3 WAY BSP
316 Stainless Steel
Reduced Bore L or T port
Lockable lever
PTFE seats
8mm to 80mm BSP
1000 PSI



V1
1 PIECE BALL VALVE
316 Stainless Steel
Reduced Bore
Lockable lever
PTFE seats
8mm to 50mm BSP
Also available with NPT thread
1000 PSI



V2
2 PIECE BALL VALVE
316 Stainless Steel
Full Bore
Lockable lever
PTFE seats
8mm to 100mm BSP
Also available with NPT thread
1000 PSI



V2-3000
2 PIECE BALL VALVE
316 Stainless Steel
Full Bore ISO MOUNT
3000 PSI
Lockable lever
Delrin seats
8mm to 50mm NPT



V2DM
2 PIECE BALL VALVE
DEADMAN Spring loaded lever
 316 Stainless Steel
 Reduced Bore
 PTFE seats
 8mm to 50mm NPT 2000 PSI
 8mm to 15mm Full bore



2006 Series
2 PIECE BALL VALVE
 Firesafe Certified
 Lockable lever operated
 316 Stainless Steel
 Full Bore, PTFE seats
 2000 PSI 8mm-25mm NPT
 1500psi 32 to 50mm NPT
 1000psi 80 to 100mm NPT



V3
3 PIECE BALL VALVE
 316 Stainless Steel
 Full Bore
 Lockable lever operated
 PTFE seats
 8mm to 100mm BSP
 1000 PSI ... Available in NPT



V3MHC
3 PIECE BALL VALVE
ISO DIRECT MOUNT
 316 Stainless Steel
 Full Bore
 Lockable lever operated
 PTFE seats
 8mm to 100mm BSP
 1000 PSI



V3HT
3 PIECE BALL VALVE
HIGH TEMPERATURE
 316 Stainless Steel
 Full Bore
 Lockable lever operated
 High temperature seats
 8mm to 100mm BSP
 1000 PSI



V3FSFB/RB
3 PIECE BALL VALVE
 Firesafe Certified, ISO PAD
 Lockable lever operated
 316 Stainless Steel
 Full bore / Reduced bore
 PTFE seats
 8mm to 50mm NPT
 2000 PSI



2 PIECE FLANGED FIRESAFE CERTIFIED BALL VALVES	
CS2020D	CS2020N
ANSI 150	ANSI 300
A216 WCB TMF1600 Seats	A216 WCB TMF1600 Seats
2 PIECE FLANGED FULL BORE	2 PIECE FLANGED FULL BORE
GEAR OPERATED OVER 150mm	GEAR OPERATED OVER 150mm
15mm to 200mm	15mm to 150mm



2 PIECE FLANGED FIRESAFE CERTIFIED BALL VALVE		
BL150	BL300	BL600
ANSI 150	ANSI 300	ANSI 600
A216 WCB FIRESAFE	A216 WCB FIRESAFE	A216 WCB FIRESAFE
FULL BORE	FULL BORE	FULL BORE
15mm to 300mm	15mm to 300mm	15mm to 80mm



FLANGED TRUNNION FIRESAFE CERTIFIED BALL VALVES				
TBL150	TBL300	TBL600	TBL900	TBL1500
ANSI 150	ANSI 300	ANSI 600	ANSI 900	ANSI 1500
A216 WCB	A216 WCB	A105	A105	A105
RTFE seat	RTFE seat	NYLON seat	NYLON seat	NYLON seat
FIRESAFE	FIRESAFE	FIRESAFE	FIRESAFE	FIRESAFE
100 to 400mm	200 to 300mm	50 to 300mm	100 to 200mm	50 to 100mm



ZRB
1 PIECE FLANGED
ANSI 150/300 BALL VALVE
A216 WCC
Reduced bore
PTFE seats
15mm to 250mm
Firesafe Certified API 607



BV2PF
PFA Lined
2 PIECE FLANGED
ANSI 150 BALL VALVE
Ductile Iron
Full Bore
15mm to 150mm



BL3000
BALL VALVE NPT 3000psi
WCB 2PCE PEEK seats
Firesafe Certified, Full bore
Lever operated
8mm to 50mm



BL1500
BALL VALVE NPT
CLASS 1500 (3700psi)
A105N 2PCE CTFE seats
Firesafe Certified, Full bore
Lever operated
15mm to 50mm



BL800
BALL VALVE API 602
A105N CLASS 800 (2000psi)
Full bore
Firesafe Certified
15mm to 50mm
Available in NPT or socket weld



CSV3FSFB
BALL VALVE NPT 2000psi
WCB 3PCE
Firesafe Certified, Full bore
ISO PAD,
Locable lever operated
15mm to 50mm



QZ602 1000PSI
BALL VALVE
NPT
DUCTILE IRON
RPTFE seats
100mm



QZ602 3000PSI
BALL VALVE
NPT
WCB Body
DELFIN seats
50mm and 80mm

SPECIAL BUTTERFLY VALVES

High Performance and Large Flanged



FSD CS (also Stainless non firesafe)
HIGH PERFORMANCE BUTTERFLY VALVE
PTFE seat
ASME B16.5 150 and 300 LB
Firesafe Certified, Manual or Actuated
-40 to 250 Deg C
80mm to 600mm 150lb
80mm to 450mm 300lb



B62F
FLANGED WAFER BUTTERFLY VALVE
EPDM seat
AS/NZ AS4087 PN 16
Gearbox operated
300mm to 1200mm



WEEL/WEEN

CAST IRON BODY

FBE Coated
316 SS Disc
410 SS Shaft
EPDM seat
Gear or Lever operated
40mm to 300mm Rated 1600Kpa
350mm to 1200mm Rated 1000Kpa
Suit AS2129 D/E and ASME B16.5



LEEL/LEEG

CAST IRON BODY

FBE Coated
316 Disc
410 SS Shaft
EPDM seat
Gear or Lever operated
50mm to 300mm Rated 1600Kpa
350mm to 600mm Rated 1000Kpa
Suit AS2129 E Only



WEVL/WEVG

CAST IRON BODY

FBE Coated
316 SS Disc 410 SS Shaft
Viton seat
Gear or Lever operated
50mm to 300mm Rated 1600Kpa
350mm to 600mm Rated 1000Kpa
Suit AS2129 D/E and ASME B16.5



LENL/LENG

DUCTILE IRON BODY

FBE Coated
316 SS Disc
316 SS Shaft
NBR seat
Gear or Lever operated
40mm to 300mm Rated 1600Kpa
350mm to 600mm Rated 1000Kpa
Suit AS2129 E Only



WENL/WENG

CAST IRON BODY

FBE Coated
316 SS Disc
410 SS Shaft
NBR seat
Gear or Lever operated
50mm to 300mm Rated 1600Kpa
350mm to 600mm Rated 1000Kpa
Suit AS2129 D/E and ASME B16.5



LAEL/LAEG

CAST IRON BODY

FBE Coated
316 SS Disc
EPDM seat
410 SS Shaft
50mm to 300mm rated 1600Kpa
350mm to 600mm rated 1000Kpa
*Suit ASME B16.5
Class 150 Only*



WETL/WETG

CAST IRON BODY

FBE Coated
CI DISC PTFE COATED
316 SS Shaft
PTFE seat
Gear or Lever operated
50mm to 300mm Rated 1000Kpa
Suit AS2129 D/E and ASME B16.5



LANL/LANG

CAST IRON BODY

FBE Coated
CF8M SS Disc
NBR seat
ISO Pad 410 SS Shaft
Threaded Holes
50mm to 300mm rated 1600Kpa
350mm to 600mm rated 1000Kpa
*Suit ASME B16.5
Class 150 Only*



WETL/WETG SS

316 BODY

316 SS Shaft
SS DISC PTFE COATED
PTFE seat
Gear or Lever operated
50mm to 300mm Rated 1000Kpa
Suit AS2129 D/E and ASME B16.5



LETL/LETG

CAST IRON BODY

FBE Coated
CI DISC PTFE COATED
316 SS Shaft
PTFE seat
Gear or Lever operated
50mm to 300mm Rated 1000Kpa
Suit AS2129 E Only



WEEL SS

316 BODY

316 Disc
316 SS Shaft
EPDM seat
Gear or Lever operated
50mm to 300mm Rated 1600Kpa
350mm to 600mm Rated 1000Kpa
Suit AS2129 D/E and ASME B16.5



LEEL SS

316 BODY

316 Disc
316 SS Shaft
EPDM seat
Gear or Lever operated
50mm to 300mm Rated 1600Kpa
350mm to 600mm Rated 1000Kpa
Suit AS2129 E Only



VGL-150
FLANGED GLOBE VALVE
 316 Stainless Steel
 ANSI 150 PTFE packing
 15mm to 300mm Drilled
 Undrilled available



SSGL-150/300
FLANGED GLOBE VALVE
 ANSI 150 or ANSI 300
 316 Body, STELLITE seat
 OS&Y Graphite Packing
 Spiral Wound Gasket
 15mm to 300mm



FLANGED GLOBE VALVES		
GL150	GL300	GL600
ANSI 150	ANSI 300	ANSI 600
A216 WCB	A216 WCB	A216 WCB
OS&Y	OS&Y	OS&Y
Hard faced seats	Hard faced seats	Hard faced seat and disc
15mm to 300mm	15mm to 300mm	15mm to 100mm



B201E
CAST IRON GLOBE VALVE
 Outside Screw and Yoke
 Bronze seat
 Flanged AS2129 Table E
 50mm to 300mm



VGL
GLOBE VALVE
 316 Stainless Steel
 Female BSP
 10mm to 50mm
 200 PSI



SSGL800
GLOBE VALVE API 602
 316L Stainless Steel
 CLASS 800 (2000psi)
 Stellite seats
 15mm to 50mm
 NPT or socket weld



GL800 BB
GLOBE VALVE API 602
 A105N
 CLASS 800 (2000psi)
 Hard face seats
 Bolted bonnet
 15mm to 50mm NPT
 Also available socket weld



B501
BRONZE GLOBE VALVE
 Bronze for Steam
 410ss seat. Union Bonnet
 300PSI
 15mm-50mm BSPT



VNE
NEEDLE VALVE
 316 Stainless Steel
 Female BSP
 8mm to 25mm
 6000 PSI

**SSGA150/300/600****GATE VALVE**

ANSI 150, 300, 600
316 Body, STELLITE seat
OS&Y Graphite Packing
Spiral Wound Gasket
15mm to 600mm

**VGA-150****FLANGED GATE VALVE**

ANSI 150 PTFE Packing
316 Stainless Steel
Full Bore
15mm to 300mm Drilled
Undrilled available

**FLANGED GATE VALVES – Cast Steel**

GA150	GA300	GA600
ANSI 150	ANSI 300	ANSI 600
A216 WCB	A216 WCB	A216 WCB
OS&Y	OS&Y	OS&Y
Hard faced seats	Hard faced seats	Hard faced seat and disc
15mm to 600mm	15mm to 450mm	15mm to 300mm

Larger sizes Gear Operated

**B601E****CAST IRON GATE VALVE**

Flanges to AS2129 Table E
Bronze seat
Outside Screw and Yoke
50mm to 450mm
Undrilled available in
100mm to 450mm

**B600E****CAST IRON GATE VALVE**

Flanges to AS2129 Table E
Bronze seat
Inside Screw
50mm to 600mm
Undrilled available in
100mm to 250mm

**RSG****RESILIENT SEAT GATE VALVE**

AS2129 Table E
Resilient EPDM seat
Cast Iron
Inside screw
FBE Coated
Wheel operated only
50mm to 300mm
100mm & 250mm available Table D

**OSY RSG****RESILIENT SEAT GATE VALVE**

Flanges to AS2129 Table E
Resilient EPDM seat
Ductile Iron
Outside Screw and Yoke
FBE Coated
Wheel operated only
50mm to 300mm

**B601A****CAST IRON GATE VALVE**

Flanges to ANSI 125
Bronze seat
Outside Screw and Yoke
50mm to 450mm
Undrilled available in
350mm to 450mm

**VGA****GATE VALVE**

316 Stainless Steel
Female BSP
15mm to 80mm
200 psi

**SSGA800****GATE VALVE API 602**

316 Stainless Steel
Class 800 (2000psi)
Stellite seats OS&Y
15mm to 50mm
NPT or Socket Weld

**GA800****GATE VALVE API 602**

A105N
Class 800 (2000 psi)
Hard face seats
Bolted or Welded bonnet
15mm to 50mm
NPT or Socket weld



V3WC
THREE PIECE
CHECK VALVE
316 Stainless Steel
Spring loaded
40 BAR
10mm to 100mm BSP



VPC
PISTON CHECK VALVE
316 Stainless Steel
Inclined PTFE seat
40 Bar
Female BSP
8mm to 50mm



SSCK800
SWING CHECK VALVE
API602
316 Stainless Steel
Stellite seat
CLASS 800 (2000psi)
NPT or socket weld
15mm to 50mm



SSCP800
PISTON CHECK VALVE
API602
316 Stainless Steel
Stellite seat
CLASS 800 (2000psi)
NPT or socket weld
15mm to 50mm



CK800
SWING CHECK VALVE
API602
A105N
Stellite seats
CLASS 800 (2000psi)
NPT or socket weld
15mm to 50mm



CP800
PISTON CHECK VALVE
API 602
A105N
Stellite seats
CLASS 800 (2000psi)
NPT or socket weld
15mm to 50mm



B404E
CAST IRON SWING CHECK
VALVE
Bronze seat
Flange AS2129 Table E
50mm to 300mm
Undrilled available



B521
PISTON CHECK VALVE
Bronze for Steam
410ss seat. Union Cover.
300PSI
15mm to 50mm BSPT



BCK-D
BALL CHECK VALVE
AS2129 TAB D
FBE Coated
Flow Operated
50mm to 300mm
100mm Table E



RSCK-E
RESILIENT SWING CHECK VALVE
AS2129 TAB E
FBE Coated
Flow Operated
50mm to 300mm
100mm, 250mm Table D



QZ614 1000PSI
SWING CHECK
VALVE
NPT
DUCTILE IRON
Viton seat
100mm

QZ614 2000PSI
SWING CHECK
VALVE
NPT
DUCTILE IRON
Viton seat
25mm, 50mm, 80mm

QZ614 3000PSI
SWING CHECK
VALVE
NPT
CAST STEEL
Viton seat
50mm, 80mm





VSC-150
FLANGED SWING CHECK VALVE
 ANSI 150
 316 Stainless Steel
 PTFE Gasket
 15mm to 300mm
 Undrilled available



VSC
SWING CHECK VALVE
 316 Stainless steel
 Female BSP
 15mm to 80mm
 200 PSI



SSCK150
SWING CHECK VALVE
 316 Stainless steel
 Stellite seat
 Flanges to ASME 150
 15mm to 300mm



SSCK300
SWING CHECK VALVE
 316 Stainless steel
 Stellite seat
 Flanges to ASME 300
 15mm to 150mm



FLANGED SWING CHECK VALVES		
CK150	CK300	CK600
ANSI 150	ANSI 300	ANSI 600
A216 WCB	A216 WCB	A216 WCB
Hard faced seats	Hard faced seats	Hard faced seat and disc
15mm to 500mm	15mm to 250mm	50mm to 150mm



DUO 316-150
WAFER DUO CHECK VALVE
 316 Stainless Steel
 Wafer to suit ANSI 150
 Viton seats
 40mm to 600mm Wafer Style



DUO 316-300
WAFER DUO CHECK VALVE
 316 Stainless Steel
 Wafer to suit ANSI 300
 Metal seats
 50mm to 300mm Wafer Style



WAFER STYLE CHECK VALVES DUAL FLAPS		
CS150 DUO	CS300 DUO	CS600 DUO
ANSI 150	ANSI 300	ANSI 600
A216 WCB	A216 WCB	A216 WCB
Viton or Metal seat	Metal seat	Metal seat
50mm to 600mm	50mm to 300mm	50mm to 300mm



WVC 316
WAFER SPRING CHECK VALVE
 316 Stainless Steel—Single Disc
 Suitable for a wide range of flange tables
 Rated to 40 bar
 15mm to 100mm Wafer Style



UNI316
SINGLE DISC CHECK VALVE
 316 Stainless Steel
 Wafer to suit ANSI 150
 PTFE seats
 50mm to 600mm Wafer Style



DUO CI
CAST IRON WAFER CHECK VALVE
 EPDM seat
 FBE Coated Body
 316 SS Plates
 Suits AS2129 Table E
 50mm to 750mm



UNI CI
CAST IRON WAFER CHECK
 NBR seat
 FBE Coated Body
 304 SS Disc
 Suit AS2129 Tab E
 50mm to 600mm



BKGV-A
LUGGED ANSI 150 LB
KNIFE GATE
316 Stainless Steel
EPDM or METAL seat
1000Kpa
50mm to 600mm



BKGV-E
LUGGED TABLE E
KNIFE GATE
316 Stainless Steel
EPDM or METAL seat
1000Kpa
50mm to 600mm



BKGV-D
LUGGED AS2129 TABLE D
KNIFE GATE
316 Stainless Steel
EPDM seat
1000Kpa
100mm to 600mm

KNIFE GATE ACCESSORIES ACTUATION CYLINDERS

Double Acting for
pneumatic operation.
WEAR CONES
Use these Polyurethane cones
to minimise grit wear.



Y STRAINERS



YST-150
FLANGED Y STRAINER
ANSI 150
316 Stainless Steel
Integral drain plug
15mm to 300mm
Available undrilled



FLANGED Y STRAINERS	
YST150	YST300
ANSI 150	ANSI 300
A216 WCB	A216 WCB
15mm to 400mm	15mm to 300mm



CI YST
CAST IRON Y STRAINER
FBE Coated
S/S Screen
Flanged AS2129 Table E
50mm to 600mm
100mm & 250mm available Table D



YST316
Y STRAINER
316 Stainless Steel
Female BSP
Integral drain plug
8mm to 80mm
800 psi to 50mm
600 psi above 50mm



YST800
Y STRAINER NPT
A105N
Integral drain plug
CLASS 800 (2000psi)
NPT or socket weld
15mm to 50mm



SSYST800
Y STRAINER
F316L
Integral drain plug
CLASS 800 (2000psi)
NPT or Socket Weld
15mm to 50mm

BALL VALVE SEALS

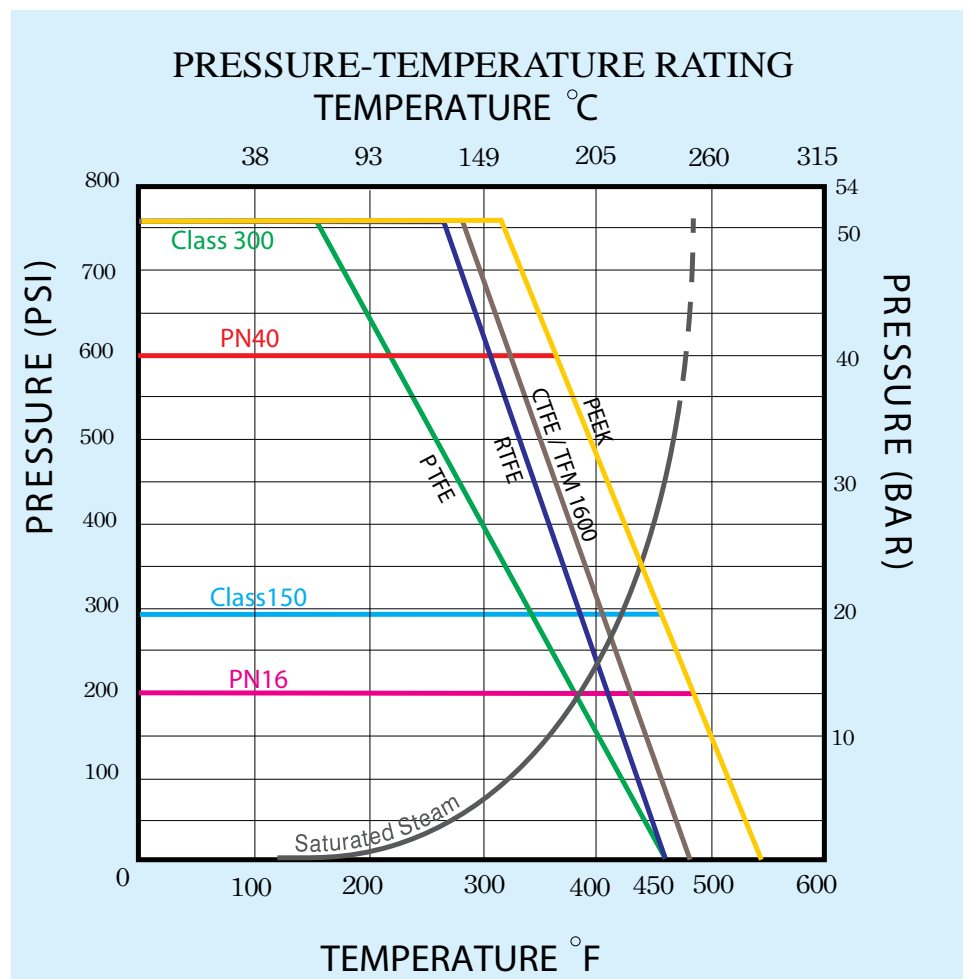
PTFE– Polytetrafluoroethylene.
Basic seats in most ball valves.
Excellent chemical resistance
-45 to 200 °C ... White

RTFE– 15% Glass filled
reinforced PTFE Similar PTFE but
improved pressure temperature
rating -45 to 220 °C ... Off White

TFM1600– modified PTFE with
lower permeability and lower
deformation under pressure
-50 to 245 °C ... White

PEEK– Polyether-ether-ketone
High temperature semi rigid
elastomer with excellent chemical
and abrasion resistance.
-55 to 280 °C ... Brown

DELIN Duponts Acetal
Homopolymer Capable of
extremely high pressure.
Do not use in oxygen service
or steam.
-40 to 80 °C ... Creamy White



BUTTERFLY SEALS

EPDM– Ethylene Propylene Diene Monomer . Good abrasion and tear resistance Some chemical resistance but susceptible to attack from hydrocarons hence not used for oils. Excellent weather aging and ozone resistance. -50 to 120 °C ... Black

BUNA-N (NBR, Nitrile) General purpose with good resistance to oil, water, solvents and hydraulic fluids. With good compression, tensile strength and abrasion resistance, suitable for fatty acids, oils, alcohols, compressed air, Di-ester based fluids, inactive gasses or glycerine ... -40 to 80 °C Black

Viton® is DuPont's trademark name for Fluoroelastomer. Viton offers excellent resistance to fuels and chemicals as well as diverse media as mineral acids, salt solutions, chlorinated hydrocarbons, and petroleum oils. Color: . 0 to 170 °C .. Black

FLEX CONNECTORS/ BUBBLE JOINTS AS2129 TABLE E



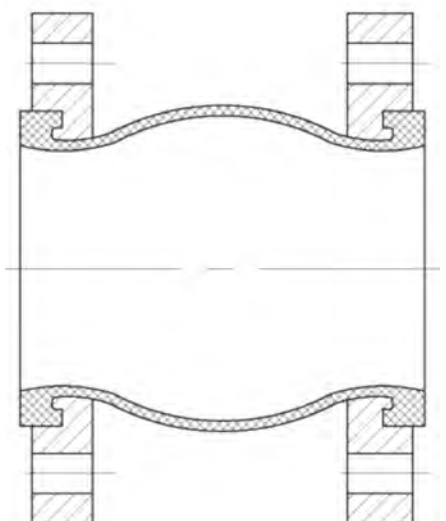
40 -600mm

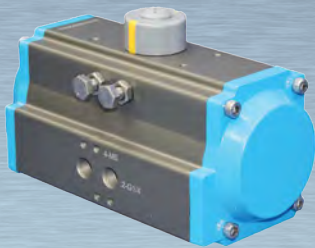
Rated to 16 bar these flex connectors are ideal for isolating pump vibration from piping systems.

Will cope with vacuum to 650mm Hg.

Constructed from EPDM material reinforced with nylon fabric and zinc plated carbon steel flanges.

Suitable for less than 60 DegC





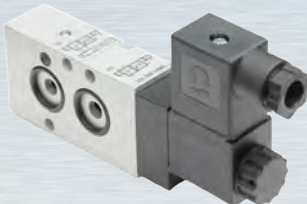
Pneumatic Actuators and Double actuating up to 10,000Nm



Electro Pneumatic Positioners 4-20ma



Large Electric Actuators 240AC or 24 AC/DC



Pneumatic Solenoids for single and doubling acting 12-240V



Pneumatically Actuated ball valve

Actuated quarter turn valves including

- Butterfly Valves and
- Ball Valves (ISO Mount)

Direct mount or coupling and bracket mount



Actuated butterfly valve with switch box and pneumatic control



Limit Switch Boxes. Mechanical and proximity switches. Exd available



Limit Switch Boxes



Small Electric Actuators 240 AC or 24 AC/DC



Declutchable Gearbox

ACTUATION OF VALVES

The Brook quarter turn valve range is also available as a complete actuated valve package, with sing or double acting pneumatic actuators or electric actuators in a variety of AC or DC voltages.

The range can be supplied assembled and tested ready to install with a comprehensive range of options and accessories including solenoid valves, positioners, limit switches and more.



Electrically Actuated Valve

Distributed By