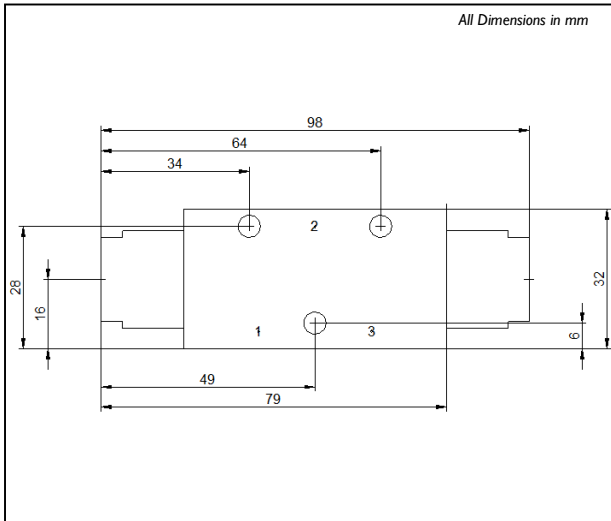
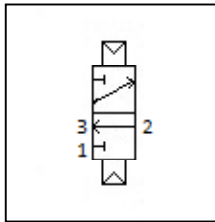


BXS-04

Dimensional Drawing



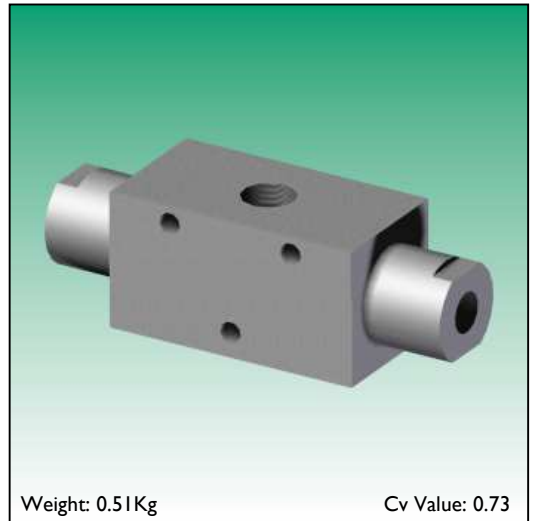
Schematic



Certification



Rendering



BXS-04-04-PI-32-NU-PI-V

BXS-04	1/4" Body - Max 12 Bar Working Pressure	Model Code
04	1/4" Body Ported	Ports
PI	Air or Hydraulic Pilot - Std - 1/8 NPT	Primary Operator
32	3-way, 2-position	Configuration
NU	Normally Universal	Configuration
PI	Air or Hydraulic Pilot - Std - 1/8 NPT	Secondary Operator
V	Viton: -15C to +130C	Seals
	NPT	Thread Form
	N/A	Panel Mount Ring
	No Button Included	Manual Button
	Block Before Bleed	Flow Characteristics
	Standard Spring	Spring Option
	No Identifier	Identifier
BXS-04 -04 -PI -32 -NU -PI -V		Model Number

Accuracy of information

We take care to ensure that product information in this catalogue is reasonably accurate and up-to-date. However, our products are continually developed and updated so to ensure accurate and up-to-date information please refer to the product catalogue issue list on our web site or contact a member of our sales team.

When selecting a product, the applicable operating system design must be considered to ensure safe use. The products function, material compatibility, adequate ratings, correct installation, operation and maintenance are the responsibilities of the system designer and user.

Quality Assurance

All Bifold products are manufactured to a most stringent QA programme to ensure that every product will give optimum performance and reliability. We are third party certified to BS EN ISO 9001:2008. Functional test certificates, letter of conformity and copies of original mill certificates, providing total traceability are available on request, to BS EN 10204 3.1 where available. We reserve the right to make changes to the specifications and design etc., without prior notice.