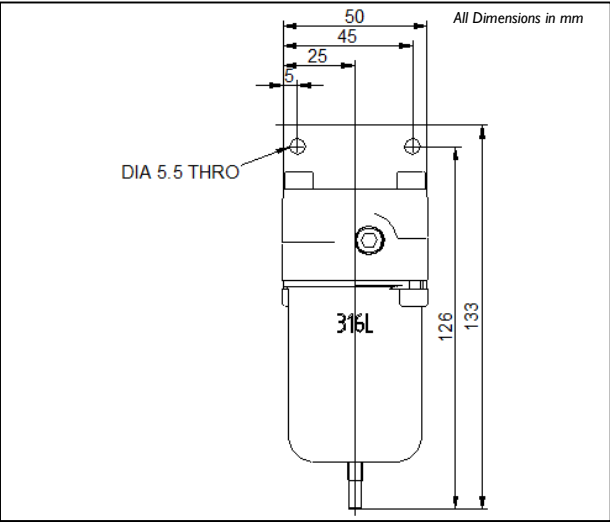


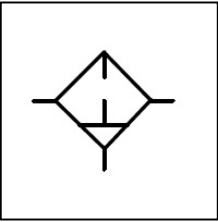
SH06



Dimensional Drawing



Schematic



Rendering



SH06-FI-MD-XI

SH06 Air preparation unit, 1/4" connections, -20°C to +135°C		Model Code
FI	Filter	Model Type
	N/A	Self/Non Relieving
MD	Manual drain, 20 bar maximum inlet pressure	Drain option
	N/A	Output Press Range
XI	5 Micron filter element	Filter Element
	NPT connections	Connections
	1/8" Gauge port	Gauge port option
	N/A	Adjustment option
	Regular drain screw	Drain screw option
	No Brackets	Brackets
SH06 -FI -MD -XI		Model Number

This is a bespoke datasheet. For further details on the complete range, please refer to catalogue:
Models SH and SC Series Air Preparation Units

www.bifold.co.uk

Accuracy of information
We take care to ensure that product information in this catalogue is reasonably accurate and up-to-date. However, our products are continually developed and updated so to ensure accurate and up-to-date information please refer to the product catalogue issue list on our web site or contact a member of our sales team.

When selecting a product, the applicable operating system design must be considered to ensure safe use. The products function, material compatibility, adequate ratings, correct installation, operation and maintenance are the responsibilities of the system designer and user.

Quality Assurance
All Bifold products are manufactured to a most stringent QA programme to ensure that every product will give optimum performance and reliability. We are third party certified to BS EN ISO 9001:2008. Functional test certificate, letter of conformity and copies of original mill certificates, providing total traceability are available on request, to BS EN 10204 3.1 where available. We reserve the right to make changes to the specifications and design etc., without prior notice.

Bifold[®]
is a member of the
Bifold Group
of companies