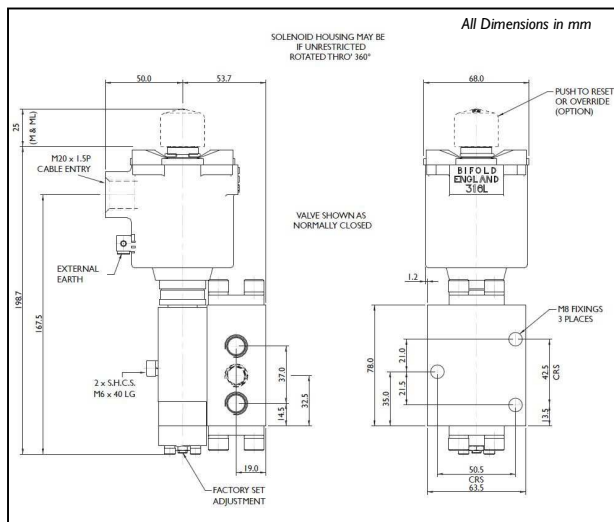
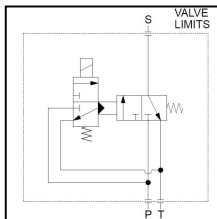


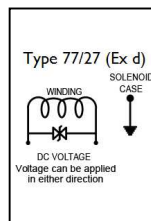
Dimensional Drawing



Schematic



Wiring



Rendering



Certification



FP15/SI/06/32/V/77A-24D/30

FP15 Solenoid Valve		Model Code
SI	High pressure pilot stage solenoid valve, 345bar, 15 litres per min	Max Valve Pressure
06	3/8 body ported	Connections
32	3 way, 2 position	Valve Configuration
V	Viton -20°C to +180°C	O-ring Material
	Normally Closed	Valve Configuration
77	Ex d	Solenoid
A	ATEX/IECEx Dual Certified/Labelled	Solenoid Approval
24D	24VDC	Voltage/Resistance
	Auto Reset	Options
30	3.0 Watts	Power
	M20 x 1.5 Cable Entry	Cable Entry
	Standard	Option
	NPT Ports	Thread Form
	Internal Pilot	Pilot Option
	N/A	Sub-Base
FP15 /SI /06 /32 /V /77 A -24D /30		Model Number

Solenoid T-Rating

Ex d IIC Gb	T4 T135°C (-60°C ≤ Tamb ≤ +90°C)
Ex tb IIIC Db	T5 T100°C (-60°C ≤ Tamb ≤ +55°C)
	T6 T85°C (-60°C ≤ Tamb ≤ +40°C)

This is a bespoke datasheet. For further details on the complete range, please refer to catalogue:
Indirect Acting Solenoid Valves Model FP15 Ex d, Ex emb, Ex ia