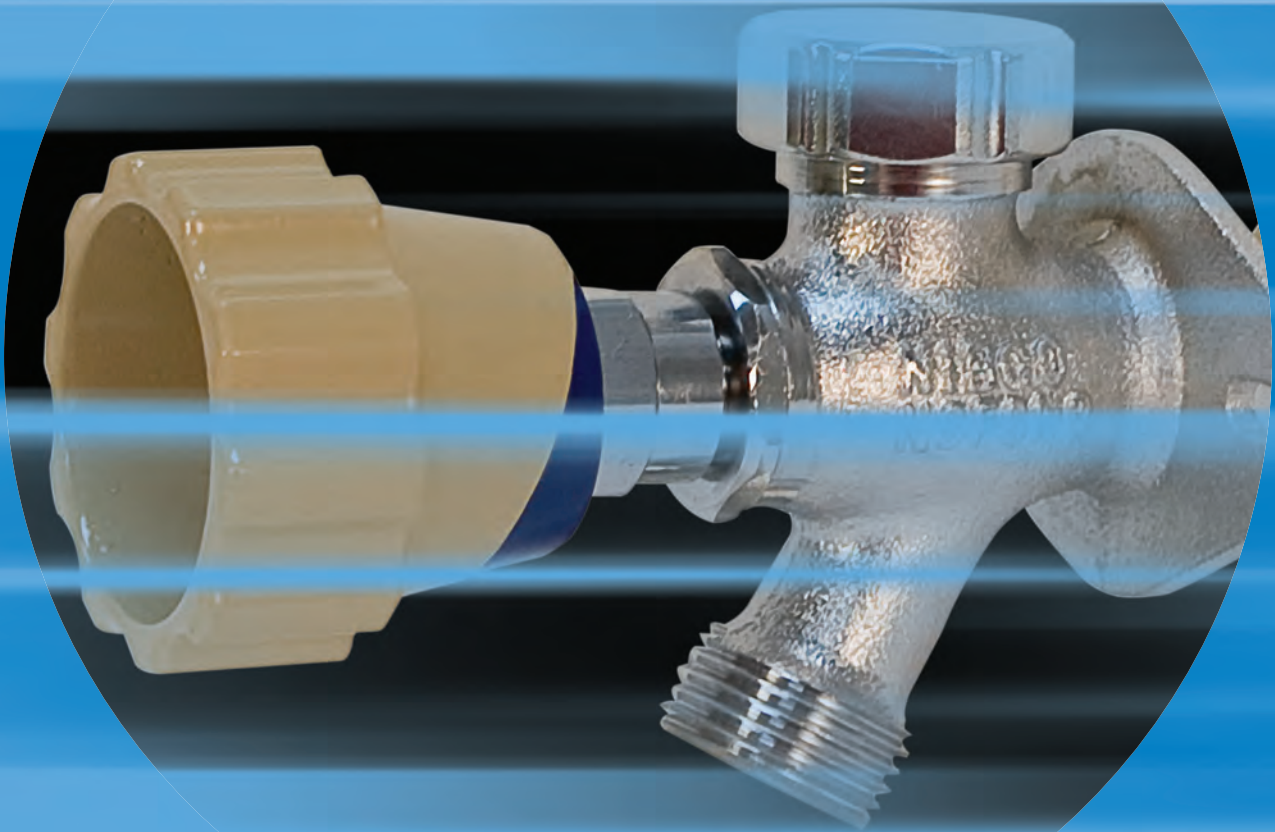


C-SVP-1018

# NIBCO®

AHEAD OF THE FLOW®



Specialty Valve Products

# Business-to-Business Solutions

Look to NIBCO for technology leadership.

The velocity with which e-business evolves demands that new products and services be continuously developed and introduced to keep our customers at the center of our business efforts. NIBCO provides an entire suite of business-to-business solutions that is changing the way we interact with customers.



[NIBCOpartner.com<sup>SM</sup>](http://NIBCOpartner.com) is an exclusive set of secure web applications that allow quick access to customer-specific information and online order processing. This self-service approach gives you 24/7 access to your order status putting you in total control of your business.

Real time information includes:

- Online order entry
- Viewable invoices & reports
- Inventory availability
- Current price checks
- Order status
- Online library of price sheets, catalogs & submittals



**Electronic Data Interchange (EDI)** makes it possible to trade business documents at the speed of light. This technology cuts the cost of each transaction by eliminating the manual labor and paperwork involved in traditional order taking. This amounts to cost-savings, increased accuracy and better use of resources.

With EDI, you can trade:

- Purchase orders
- PO Acknowledgements
- Invoices
- Product activity data
- Advanced ship notices
- Remittance advice



**Vendor Managed Inventory (VMI)**, a sophisticated service for automated inventory management, reduces your overhead by transferring inventory management, order entry and forecasting to NIBCO. This is an on-going, interactive partnership with NIBCO.

Through automation, VMI brings results:

- Improves customer service
- Optimum inventory efficiencies
- Better forecasting
- Cuts transaction costs
- Peace of mind
- Relief from day-to-day management





# Table of Contents

Visit our website for the most current information .

	Page
<b>Two Piece Ball Valves</b>	
T/S-580-A .....	4
T/S-FP-600-A .....	5
S-FP-600-AD .....	6
<b>Gas Ball Valves</b>	
GB1A .....	7
GB2A .....	7
GBVA38M/GBVA12M .....	8
GBVA .....	8
GBVA38FL/GBVA12FL .....	8
<b>Boiler Drains</b>	
QT73X .....	9
QT74X .....	9
72 .....	10
73-CL .....	10
74-CL .....	10
74-2 .....	10
4464 .....	10
<b>Hose Bibbs</b>	
QT54X .....	11
QT55X .....	11
QT56X .....	11
QT57X .....	11
<b>Garden Valves</b>	
61 .....	12
<b>Sillcocks</b>	
95C .....	13
QT63X .....	14
QT763X .....	14
QT763IX .....	14
<b>Bronze &amp; Brass Gate and Check Valves</b>	
T/S-29 .....	15
TI/SI-8 .....	16
T/S-480 .....	17
TI/SI-3 .....	18
<b>Washer Box Valves</b>	
64L .....	19
<b>Plastic Valves</b>	
4660-S/T .....	20
4770 .....	21
<b>FaucetLock™</b> .....	22
<b>Low Pressure Valve Handwheel Options</b> .....	23
<b>Metal Connections</b> .....	24-25
<b>Frostproof Sillcock Maintenance &amp; Installation</b> .....	26
<b>Warranty</b> .....	27

Visit our website for the most current information.

## Consult the NIBCO® Lead Free Valves Catalog for the following products:



- **Lead-Free\* PRO-Stop® Supply Stops**



- **Lead-Free\* Ball Valves**



- **Lead-Free\* Stop & Waste Valves**

\*Weighted average lead content ≤ 0.25%

# Brass Ball Valves

Two-Piece Body • Standard Port • Blowout-Proof Stem • PTFE Seats

**400 PSI/28 Bar Non-Shock Cold Working Pressure**

## MATERIAL LIST

PART	SPECIFICATION
1 Body	Forged Brass <sup>1</sup> CU > 57%
2 End Cap	Forged Brass <sup>1</sup> CU > 57%
3 Ball Seat	PTFE
4 Ball	Brass, Chrome Plated
5 Stem	Brass
6 O-Ring	Fluorocarbon (FKM)
7 Stem Packing	PTFE
8 Packing Nut	Brass
9 Lever Handle	Steel, Plated
10 Lock Washer	Stainless Steel
11 Stem Nut	Stainless Steel

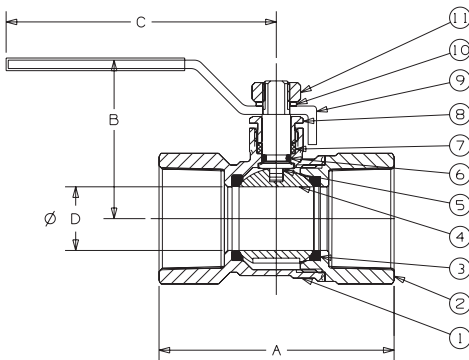
Note: <sup>1</sup> For Material Certification, contact NIBCO Technical Services.



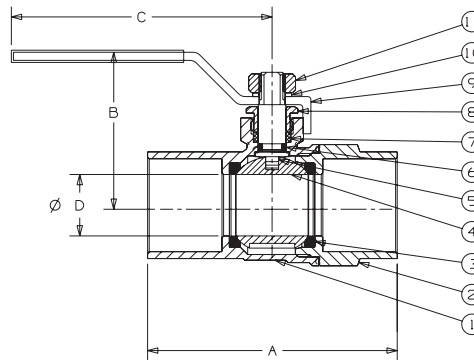
**T-580-A**  
Threaded



**S-580-A**  
Solder



**T-580-A**  
NPT x NPT



**S-580-A**  
C x C

## DIMENSIONS—WEIGHTS—QUANTITIES

Size	Dimensions										T-580-A		S-580-A		Ctn. Qty	
	A		B		C		D Port		Wt.		Wt.					
	In.	mm.	In.	mm.	In.	mm.	In.	mm.	Lbs.	Kg.	Lbs.	Kg.				
½	15	2.16	55	1.95	50	1.58	40	3.74	95	0.39	10	0.36	0.16	0.29	0.13	16
¾	20	2.19	56	2.50	64	1.79	45	3.74	95	0.59	15	0.48	0.22	0.44	0.20	12
1	25	2.76	70	3.04	77	2.06	52	3.94	100	0.75	19	0.85	0.39	0.71	0.32	6
1¼	32	3.13	80	3.49	89	2.54	65	4.50	114	0.98	25	1.14	0.52	1.07	0.49	4
1½	40	3.40	86	3.98	101	2.59	66	5.00	127	1.18	30	1.71	0.78	1.48	0.67	2
2	50	3.73	95	4.76	121	2.95	75	6.18	157	1.46	37	2.41	1.09	2.41	1.09	2

Note: S-580-A series to be soft soldered into lines using solder with the melting point not exceeding 470° F. Use of higher temperature solders may damage the seat material.



**WARNING:** This product can expose you to chemicals including lead, which is known to the State of California to cause cancer and birth defects or other reproductive harm. For more information go to [www.P65Warnings.ca.gov](http://www.P65Warnings.ca.gov).

**NOT FOR USE WITH POTABLE DRINKING WATER APPLICATIONS AFTER JANUARY 3, 2014.**

# Brass Ball Valves

Two-Piece Body • Full Port • Blowout-Proof Stem • PTFE Seats  
**1/4"-2" 600 PSI/41.4 Bar Non-Shock Cold Working Pressure**  
**2 1/2"-4" 400 PSI/27.6 Bar Non-Shock Cold Working Pressure**

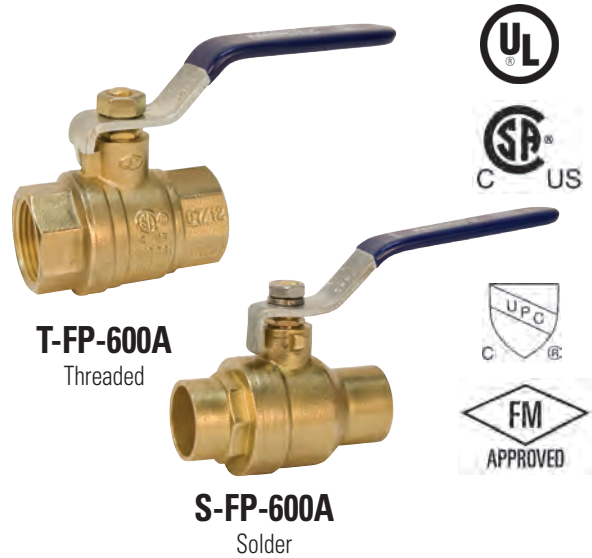
CSA CERTIFIED TO ASME B16.44 AND CR91-002 (THREADED 1/4"-4")  
 • UL LISTED (THREADED 1/4"-4") • FM APPROVED (THREADED 1/4"-2")  
 • CRN: 0C19353.5XX\*

**Threaded**  
 CSA (1/4" - 4"):  
 • CR91-002: 1/2 psig, 2 psig, and 5 psig (these are specific approved categories)  
 • ASME B16.33: 125 psig (maximum)  
 • Temperature is -4° F to 194° F

**Threaded**  
 FM (1/4" - 2"):  
 • 175wvp Threaded

UL, Gas and Oil (1/4" - 4"):  
 • YQNZ, Compressed Gas Shutoff Valves: 250 psi  
 • YRBX, Flammable Liquid Shutoff Valves: 250 psi  
 • YRPV, Gas Shutoff Valves: 250 psi  
 • YSDT, LP-Gas Shutoff Valves: 250 psi  
 • MHKZ, Manual Valves: 250 psi

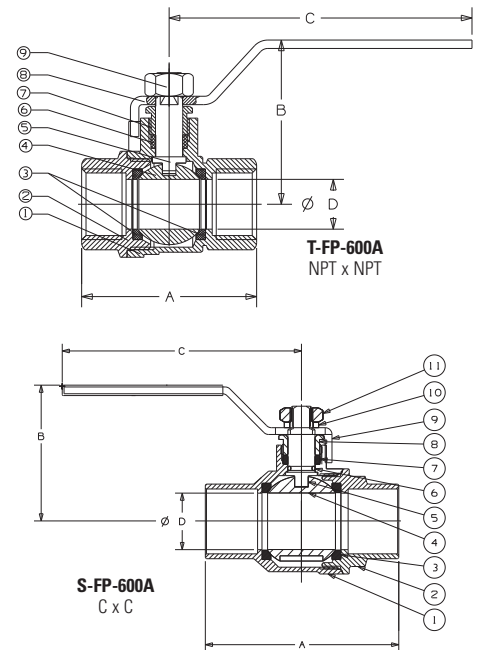
\*Please contact Technical Customer Service for the CRN Jurisdictions/Provinces list



## MATERIAL LIST

PART	SPECIFICATION
1. Body	Forged Brass <sup>2</sup> CU > 57%
2. End Cap	Forged Brass <sup>2</sup> CU > 57%
3. Ball Seat	PTFE
4. Ball	Chrome Plated Brass - C46500 (1/4"-1"), Stainless Steel 316 (1 1/4"-4")
5. Stem	Brass
6. O-Ring (Stem Seal)*	Fluorocarbon (FKM)
7. Stem Packing	PTFE
8. Packing Nut	Brass
9. Lever Handle <sup>1</sup>	Steel, Plated
10. Lock Washer*	Stainless Steel
11. Handle Nut <sup>1</sup>	Stainless Steel

Note: \* Parts 6 and 10 are applicable of S-FP-600A only.  
<sup>1</sup> Due to Standard Approvals, Lever Handles and Nuts are not interchangeable between Solder and Threaded.  
<sup>2</sup> For Material Certification, contact NIBCO Technical Services.



## DIMENSIONS—WEIGHTS—QUANTITIES

Size	Dimensions						Port	T-FP-600A		S-FP-600A		T-FP-600A Ctn. Qty.	S-FP-600N Ctn. Qty.								
	A	A	B	B	C	C		Lbs.	Kg.	Lbs.	Kg.										
1/4	8	1.76	45	—	—	1.73	44	—	—	3.54	90	—	—	.39	10	.33	.15	—	—	18	—
3/8	10	1.76	45	1.75	44	1.73	44	1.58	40	3.54	90	3.78	96	.39	10	.30	.14	.38	.17	18	18
1/2	15	2.05	52	2.01	51	1.92	49	1.78	45	3.54	90	3.78	96	.59	15	.44	.20	.40	.18	18	18
3/4	20	2.36	60	2.74	70	2.09	53	2.13	54	3.78	96	3.98	101	.75	19	.66	.30	.67	.30	12	12
1	25	2.76	70	3.35	85	2.56	65	2.52	64	4.53	115	4.41	112	.98	25	1.10	.50	1.12	.51	6	6
1 1/4	32	3.31	84	3.78	96	2.95	75	2.65	67	4.53	115	5.04	128	1.26	32	1.57	.71	1.49	.67	4	4
1 1/2	40	3.66	93	4.42	112	3.35	85	3.12	79	5.51	140	6.22	158	1.57	40	2.40	1.09	2.38	1.08	2	2
2	50	4.18	106	5.34	136	3.68	93	3.41	87	5.51	140	6.22	158	1.97	50	3.37	1.53	3.62	1.64	2	2
2 1/2	65	5.38	137	6.28	160	4.76	121	4.76	121	8.66	220	8.66	220	2.56	65	7.60	3.45	6.36	2.88	3	3
3	75	6.04	153	7.15	182	5.08	129	5.08	129	8.66	220	8.66	220	2.95	75	9.36	4.24	8.32	3.77	2	2
4	100	7.39	188	—	—	5.87	149	—	—	9.61	244	—	—	3.89	99	16.85	7.64	—	—	1	—

NOT FOR USE WITH POTABLE DRINKING WATER APPLICATIONS AFTER JANUARY 3, 2014.

**WARNING:** This product can expose you to chemicals including lead, which is known to the State of California to cause cancer and birth defects or other reproductive harm. For more information go to www.P65Warnings.ca.gov.

# Brass Ball Valves

Two-Piece Body • Full Port • Blowout-Proof Stem • PTFE Seats • w/ Drain

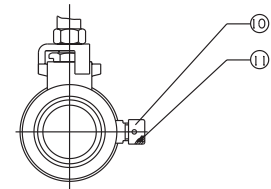
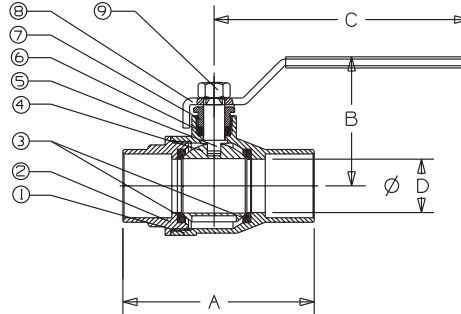
**600 PSI/41.4 Bar Non-Shock Cold Working Pressure**



**S-FP-600-AD**  
Solder

MATERIAL LIST	
PART	SPECIFICATION
1. Body	Forged Brass <sup>1</sup> CU > 57%
2. End Cap	Forged Brass <sup>1</sup> CU > 57%
3. Ball Seat	PTFE
4. Ball	Brass, Chrome Plated
5. Stem	Brass
6. Stem Packing	PTFE
7. Packing Nut	Brass
8. Lever Handle	Steel, Plated
9. Handle Nut	Stainless Steel
10. Drainable Cap	Brass
11. Rubber Seat	Silicone

Note: <sup>1</sup> For Material Certification, contact NIBCO Technical Services.



**S-FP-600-AD**  
C x C

## DIMENSIONS—WEIGHTS—QUANTITIES

Size	Dimensions				Weight							
	A		B		C		D		Lbs.	Kg.	Ctn Qty.	
In. mm.	In.	mm.	In.	mm.	In.	mm.	In.	mm.				
½	15	2.16	55	1.67	42	3.54	90	.58	15	.54	.24	20
¾	20	2.85	72	2.03	52	4.47	114	.75	19	.76	.34	12
1	25	3.38	86	2.24	57	4.47	114	.95	24	1.07	.49	6

**WARNING:** This product can expose you to chemicals including lead, which is known to the State of California to cause cancer and birth defects or other reproductive harm. For more information go to [www.P65Warnings.ca.gov](http://www.P65Warnings.ca.gov).

NOT FOR USE WITH POTABLE DRINKING WATER APPLICATIONS AFTER JANUARY 3, 2014.

# Gas Ball Valve

## GB10\*/GB1A Female x Female, Lever Handle

- CSA Certified to ½ PSI for indoor appliance connections per ANSI Z21.15/CSA 9.1
- 5 PSI for indoor shutoff per CGA CR91-002 and ASME B16.44
- 600 PSI CWP Rated

### MATERIAL LIST

PART	SPECIFICATION
1. Body	Forged Brass <sup>1</sup> CU>57%
2. End Piece	Forged Brass <sup>1</sup> CU>57%
3. Seat	PTFE, Glass Reinforced
4. Ball	Brass, Chrome Plated
5. Stem	Brass
6. O-Ring	Nitrile
7. Handle	Aluminum, Painted Red
8. Nut	Steel, Plated
9. ID Plate	Aluminum

### DIMENSIONS—WEIGHT

Size (In.)	A	B	C	D	E	Wt. (lbs)
¾	1.91	1.14	1.19	0.39	0.51	.31
½	2.21	1.19	1.19	0.47	0.61	.36
¾	2.45	1.26	1.19	0.59	0.67	.47
1	2.76	1.36	1.19	0.75	0.71	.91

\*GB10, 3/8" not CSA certified

<sup>1</sup> For material certification, contact NIBCO Technical Services

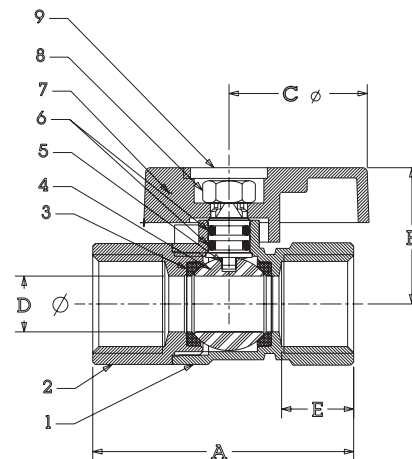
**NOT FOR USE WITH POTABLE DRINKING WATER APPLICATIONS AFTER JANUARY 3, 2014.**



**WARNING:** This product can expose you to chemicals including lead, which is known to the State of California to cause cancer and birth defects or other reproductive harm. For more information go to [www.P65Warnings.ca.gov](http://www.P65Warnings.ca.gov).



**GB1A**



## GB2A Female x Female, Square Head

- CSA Certified to ½ PSI for indoor appliance connections per ANSI Z21.15/CSA 9.1
- 5 PSI for indoor shutoff per CGA CR91-002 and ASME B16.44
- 600 PSI CWP Rated

### MATERIAL LIST

PART	SPECIFICATION
1. Body	Forged Brass <sup>1</sup> CU>57%
2. End Piece	Forged Brass <sup>1</sup> CU>55%
3. Seat	PTFE, Glass Reinforced
4. Ball	Brass, Chrome Plated
5. Stem	Brass
6. O-Ring	Nitrile
7. Handle	Copper Alloy Painted Red
8. Screw	Steel, plated

### DIMENSIONS—WEIGHT

Size (In.)	A	B	C	D	E	Wt. (lbs)
½	2.21	1.44	.95	.47	.61	.34
¾	2.45	1.56	.95	.59	.67	.45

Note: <sup>1</sup> For Material Certification, contact NIBCO Technical Services.

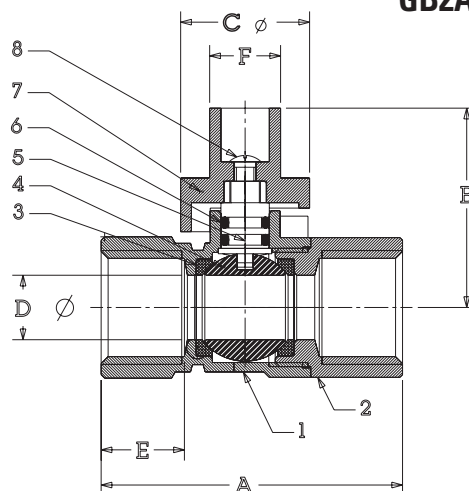


**WARNING:** This product can expose you to chemicals including lead, which is known to the State of California to cause cancer and birth defects or other reproductive harm. For more information go to [www.P65Warnings.ca.gov](http://www.P65Warnings.ca.gov).

**NOT FOR USE WITH POTABLE DRINKING WATER APPLICATIONS AFTER JANUARY 3, 2014.**



**GB2A**



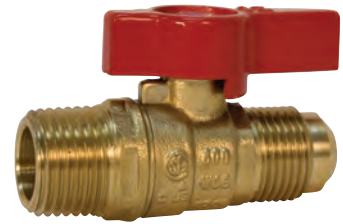
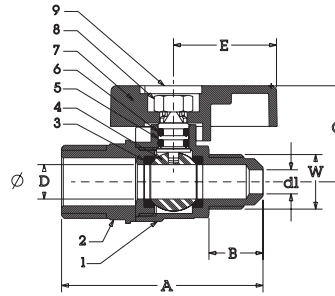
# Gas Ball Valve

## GBV38M\*/GBVA12M — Flare x MPT, Lever Handle

- CSA Certified to ½ PSI for indoor appliance connections per ANSI Z21.15/CSA 9.1
- 5 PSI for indoor shut-off per ASME B16.44 and CGA CR91-002

### MATERIAL LIST

PART	SPECIFICATION
1. Body	Forged Brass <sup>1</sup> CU>57%
2. End Piece	Forged Brass <sup>1</sup> CU>57%
3. Seat	PTFE, Glass Reinforced
4. Ball	Brass, Chrome Plated
5. Stem	Brass
6. O-Ring	Nitrile
7. Handle	Aluminum, Painted Red
8. Nut	Steel, Plated
9. ID Plate	Aluminum



### DIMENSIONS—WEIGHT

Size (In.)	A	B	C	d <sup>1</sup>	D	E	W	Wgt
3/8	2.35	.62	1.14	.28	.39	1.19	5/8-18 UNF	.34
1/2	2.47	.75	1.14	.39	.39	1.19	3/4-16 UNF	.36

\* GBV3/8 and GBV12FL not CSA certified

Note: <sup>1</sup> For Material Certification, contact NIBCO Technical Services.

NOT FOR USE WITH POTABLE DRINKING WATER APPLICATIONS AFTER JANUARY 3, 2014.



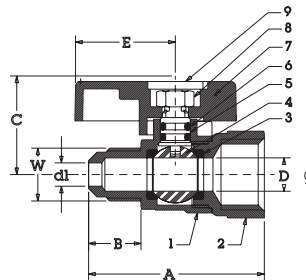
**WARNING:** This product can expose you to chemicals including lead, which is known to the State of California to cause cancer and birth defects or other reproductive harm. For more information go to [www.P65Warnings.ca.gov](http://www.P65Warnings.ca.gov).

## GBVA — Flare x FPT, Lever Handle

- CSA Certified to ½ PSI for indoor appliance connections per ANSI Z21.15/CSA 9.1
- 5 PSI for indoor shut-off per ASME B16.44 and CGA CR91-002

### MATERIAL LIST

PART	SPECIFICATION
1. Body	Forged Brass <sup>1</sup> CU>57%
2. End Piece	Forged Brass <sup>1</sup> CU>57%
3. Seat	PTFE, Glass Reinforced
4. Ball	Brass, Chrome Plated
5. Stem	Brass
6. O-Ring	Nitrile
7. Handle	Aluminum, Painted Red
8. Ball Seat	PTFE
9. Nut	Steel, Plated
10. ID Plate	Aluminum



### DIMENSIONS—WEIGHT

Size (In.)	A	B	C	d <sup>1</sup>	D	E	W	Wgt
3/8	2.13	.62	1.14	.28	.39	1.19	5/8-18 UNF	.35
1/2	2.25	.75	1.14	.39	.39	1.19	3/4-16 UNF	.44

Note: <sup>1</sup> For Material Certification, contact NIBCO Technical Services.

NOT FOR USE WITH POTABLE DRINKING WATER APPLICATIONS AFTER JANUARY 3, 2014.



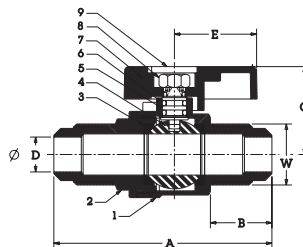
**WARNING:** This product can expose you to chemicals including lead, which is known to the State of California to cause cancer and birth defects or other reproductive harm. For more information go to [www.P65Warnings.ca.gov](http://www.P65Warnings.ca.gov).

## GBVA38FL/GBV12FL\* — Flare x Flare, Lever Handle

- CSA Certified to ½ PSI for indoor appliance connections per ANSI Z21.15/CSA 9.1
- 5 PSI for indoor shut-off per ASME B16.44 and CGA CR91-002

### MATERIAL LIST

PART	SPECIFICATION
1. Body	Forged Brass <sup>1</sup> CU>57%
2. End Piece	Forged Brass <sup>1</sup> CU>57%
3. Seat	PTFE, Glass Reinforced
4. Ball	Brass, Chrome Plated
5. Stem	Brass
6. O-Ring	Nitrile
7. Handle	Aluminum, Painted Red
8. Ball Seat	PTFE
9. Nut	Steel, Plated
10. ID Plate	Aluminum



### DIMENSIONS—WEIGHT

Size (In.)	A	B	C	D	E	W	Wgt
3/8	2.37	.62	1.14	.28	1.19	5/8-18 UNF	.36
1/2	2.62	.75	1.14	.39	1.19	3/4-16 UNF	.47

\* GBV3/8 and GBV12FL not CSA certified

Note: <sup>1</sup> For Material Certification, contact NIBCO Technical Services.

NOT FOR USE WITH POTABLE DRINKING WATER APPLICATIONS AFTER JANUARY 3, 2014.



**WARNING:** This product can expose you to chemicals including lead, which is known to the State of California to cause cancer and birth defects or other reproductive harm. For more information go to [www.P65Warnings.ca.gov](http://www.P65Warnings.ca.gov).



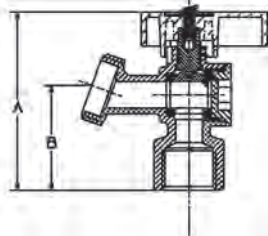
# Quarter-Turn Boiler Drains

125 lb. CWP to 100°F

Maximum Temperature 180°F

## QUARTER-TURN BOILER DRAINS MATERIAL LIST

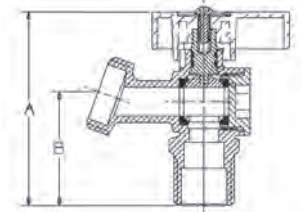
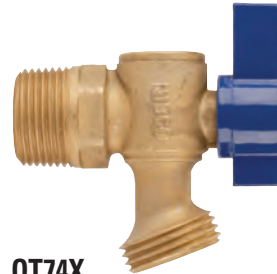
PART	SPECIFICATION
Screw	Steel
I.D. Tag	Aluminum
Handle	Zinc
Stem	Brass ASTM B 16 UNS C36000
O-Ring	Nitrile
Seat	PTFE
Ball	Brass ASTM B 16 UNS C36000
Adapter	Brass ASTM B 283 UNS C37700
Body	Brass ASTM B 283 UNS C37700



**QT73X**

DESCRIPTION	NOM. SIZE	DIMENSIONS		APPROX. NET WT.
		A	B	
<b>BOILER DRAIN</b> FIP to Hose	1/2	2.64"	1.57"	.42 lb
	3/4	2.72"	1.65"	.46 lb

IAPMO Listed to cUPC®



**QT74X**

DESCRIPTION	NOM. SIZE	DIMENSIONS		APPROX. NET WT.
		A	B	
<b>BOILER DRAIN</b> Cup or MIP Threads to Hose	1/2"	2.64"	1.57"	.40 lb
	3/4"*	2.72"	1.65"	.42 lb

IAPMO Listed to cUPC®

\* 3/4" furnished in male threads only



**WARNING:** This product can expose you to chemicals including lead, which is known to the State of California to cause cancer and birth defects or other reproductive harm. For more information go to [www.P65Warnings.ca.gov](http://www.P65Warnings.ca.gov).

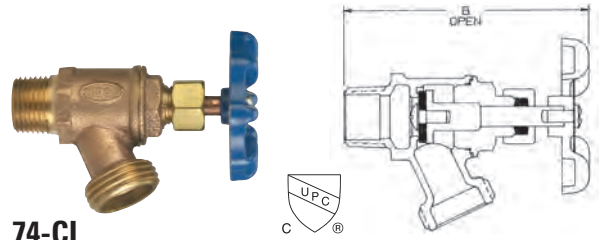
**NOT FOR USE WITH POTABLE DRINKING WATER APPLICATIONS AFTER JANUARY 3, 2014.**

# Multi-Turn Boiler Drains

125 lb. CWP to 100°F  
Maximum Temperature 180°F

## MULTI-TURN MATERIALS LIST

PART	SPECIFICATION
Body	Cast Copper - Based Alloy C84400
Bonnet	Cast Copper - Based Alloy C84400
Stem	Cold-formed Copper Alloy
Seat Disc	Buna-N
Seat Disc Screw	Stainless Steel, Type 410
Packing Nut	Free Cutting Brass - ASTM B 16
Packing	Graphite Impregnated, Asbestos-Free
Handwheel	Epoxy Coated Zinc Alloy
Handwheel Screw	Carbon Steel - Clear Chromate Finish

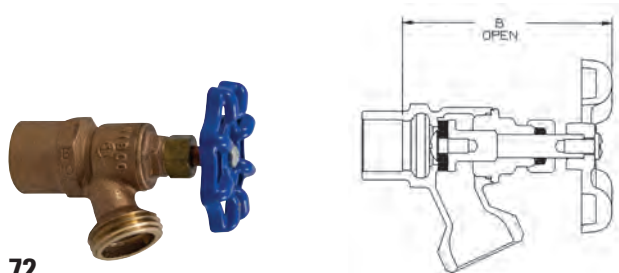


74-CL

DESCRIPTION	NOM. SIZE	DIMENSIONS	APPROX. NET WT.
		B	
Boiler Drain Copper or Male Threads to Hose	1/2"	3 11/16"	.4 lb
	3/4"*	3 3/4"	.45 lb

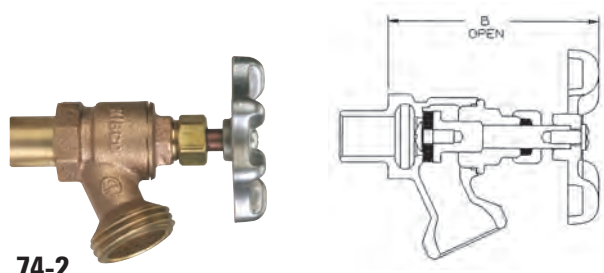
IAPMO Listed to cUPC®

\* 3/4" furnished in male threads only



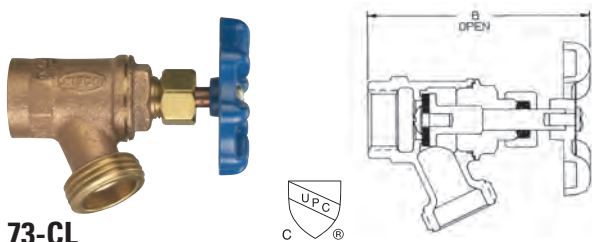
72

DESCRIPTION	NOM. SIZE	DIMENSIONS	APPROX. NET WT.
		B	
Boiler Drain Cup to Hose	1/2"	3 1/16"	.40 lb
	3/4"*	2 13/16"	.40 lb



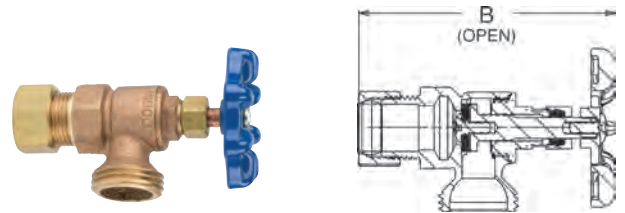
74-2

DESCRIPTION	NOM. SIZE	DIMENSIONS	APPROX. NET WT.
		B	
Boiler Drain Fit to Hose	1/2"	3 3/8"	.40 lb



73-CL

DESCRIPTION	NOM. SIZE	DIMENSIONS	APPROX. NET WT.
		B	
Boiler Drain Threaded to Hose	1/2"	3 1/4"	.50 lb
	3/4"	3 5/16"	.60 lb



4464

DESCRIPTION	NOM. SIZE	DIMENSIONS	APPROX. NET WT.
		B	
Boiler Drain Compression to Hose	1/2"	3 1/4"	.50 lb

**WARNING:** This product can expose you to chemicals including lead, which is known to the State of California to cause cancer and birth defects or other reproductive harm. For more information go to [www.P65Warnings.ca.gov](http://www.P65Warnings.ca.gov).

**NOT FOR USE WITH POTABLE DRINKING WATER APPLICATIONS AFTER JANUARY 3, 2014.**

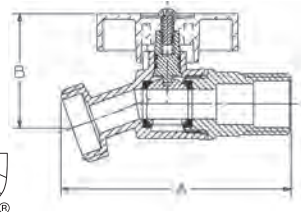
# Hose Bibbs

125 lb. CWP to 100°F

Maximum Temperature 180°F

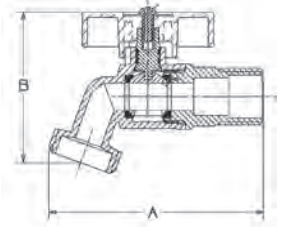
## QUARTER TURN HOSE BIBBS MATERIALS LIST

PART	SPECIFICATION
Screw	Steel
I.D. Tag	Aluminum
Handle	Zinc
Stem	Brass ASTM B 16 UNS C36000
O-Ring	Nitrile
Seat	PTFE
Ball	Brass ASTM B 16 UNS C36000
Adapter	Brass ASTM B 283 UNS C37700
Body	Brass ASTM B 283 UNS C37700



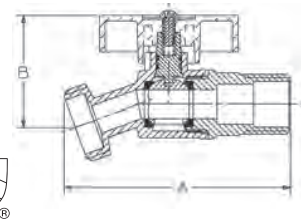
**QT54X**

DESCRIPTION	Nom. Size	DIMENSIONS		APPROX. NET WT.
		A	B	
<b>NO-KINK HOSE BIB</b> Male or Cup to Hose	1/2	3.15"	1.54"	.40 lb
	3/4	3.15"	1.54"	.42 lb



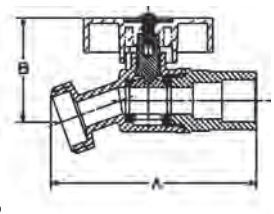
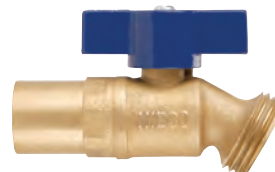
**QT56X**

DESCRIPTION	Nom. Size	DIMENSIONS		APPROX. NET WT.
		A	B	
<b>HOSE BIBB</b> Cup or Male to Hose Male Thread to Hose	1/2	3.15"	2.17"	.40 lb
	3/4	3.15"	2.14"	.42 lb



**QT55X**

DESCRIPTION	Nom. Size	DIMENSIONS		APPROX. NET WT.
		A	B	
<b>NO-KINK HOSE BIBB</b> FIP to Hose	1/2	2.87"	1.54"	.40 lb
	3/4	3.15"	1.54"	.45 lb



**QT57X**

DESCRIPTION	Nom. Size	DIMENSIONS		APPROX. NET WT.
		A	B	
<b>NO-KINK HOSE BIBB</b> 1/2 Cup or 3/4 Ftg. to Hose	1/2" or 3/4"	3.11"	1.54"	.42 lb

**WARNING:** This product can expose you to chemicals including lead, which is known to the State of California to cause cancer and birth defects or other reproductive harm. For more information go to [www.P65Warnings.ca.gov](http://www.P65Warnings.ca.gov).

**NOT FOR USE WITH POTABLE DRINKING WATER APPLICATIONS AFTER JANUARY 3, 2014.**

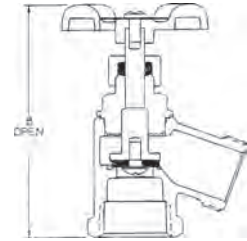
# Garden Valves

125 lb. CWP to 100°F

Maximum Temperature 180°F

## GARDEN VALVE MATERIALS LIST

PART	SPECIFICATION
Body	Cast Copper - Based Alloy C84400
Bonnet	Cast Copper - Based Alloy C84400
Stem	Cold-formed Copper Alloy
Seat Disc	Buna-N
Seat Disc Screw	Stainless Steel, Type 410
Packing Nut	Free Cutting Brass - ASTM B 16
Packing	Graphite Impregnated, Asbestos-Free
Handwheel	Epoxy Coated Zinc Alloy
Handwheel Screw	Carbon Steel - Clear Chromate Finish



61

DESCRIPTION	Nom. Size	DIMENSIONS	APPROX. NET WT.
		B	
Bent Nose Hose Bibb FIP to Hose	1/2"	3 5/8"	.60 lb
	3/4"	3 3/4"	.70 lb

**WARNING:** This product can expose you to chemicals including lead, which is known to the State of California to cause cancer and birth defects or other reproductive harm. For more information go to [www.P65Warnings.ca.gov](http://www.P65Warnings.ca.gov).

**NOT FOR USE WITH POTABLE DRINKING WATER APPLICATIONS AFTER JANUARY 3, 2014.**

# Fig. 95C Frostproof Sillcock

Chrome Plated Brass Body • 180° Turn • Ceramic Seats • Built in Lockshield • Flow Indicator on Metal Handwheel

ASSE 1019-C

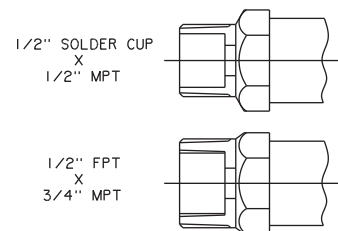
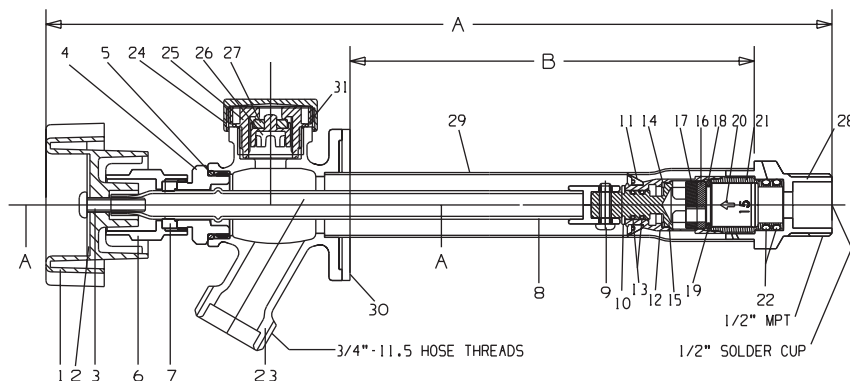
## MATERIAL LIST

PART	SPECIFICATION
1. Handwheel	Aluminum B85 Epoxy Coated
2. ID Plate	Aluminum
3. Screw	Brass B16 C36000
4. Bonnet	Brass B16 C36000
5. O-Ring	NBR
6. Lockshield	Brass B16 C36000
7. Washer Seal	NBR
8. Stem	Brass B135 C33000
9. Screw	304 SS
10. V-Clip	304 SS
11. V-Cup Seal	NBR
12. Housing	Brass B16 C36000
13. O-Ring	NBR
14. Seal Washer	PTFE
15. Inner Stem	Brass B16 C36000
16. Seat 180°	Ceramic
17. Movement 180°	Ceramic
18. Washer	Silicon Rubber
19. Washer	Brass B16 C36000
20. Spring Check Valve	304 SS
21. Valve Base	Brass B16 C36000
22. O-Ring	FKM
23. Cast Body	Brass B584 C85700
24. Vent Cap	POM - Chrome Plated
25. Vent Body	POM
26. Poppet	POM
27. Vent Seat	NBR
28. Inlet End	Brass B16 C36000
29. Body Tube	Brass B135 C33000
30. Siding Plate	Plastic
31. O-Ring	NBR



## DIMENSIONS — WEIGHTS

Size (In.)	A	B	Wt. Lbs.	Size (In.)	A	B	Wt. Lbs.
1/2 x 4	9 3/4	4	1.28	3/4 x 4	9 3/4	4	1.31
1/2 x 6	11 3/4	6	1.37	3/4 x 6	11 3/4	6	1.40
1/2 x 8	13 3/4	8	1.44	3/4 x 8	13 3/4	8	1.47
1/2 x 10	15 3/4	10	1.49	3/4 x 12	17 3/4	12	1.62
1/2 x 12	17 3/4	12	1.54				
1/2 x 14	19 3/4	14	1.60				



**WARNING:** This product can expose you to chemicals including lead, which is known to the State of California to cause cancer and birth defects or other reproductive harm. For more information go to [www.P65Warnings.ca.gov](http://www.P65Warnings.ca.gov).

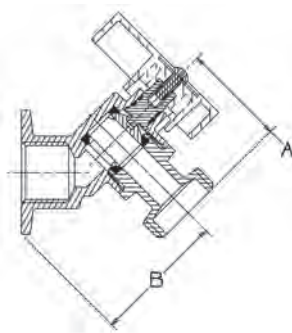
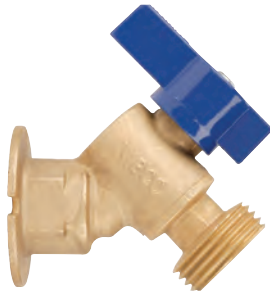
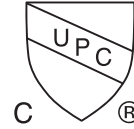
**NOT FOR USE WITH POTABLE DRINKING WATER APPLICATIONS AFTER JANUARY 3, 2014.**

# QTX Series Quarter-Turn Low Pressure Sillcocks

- IAPMO Listed to cUPC®

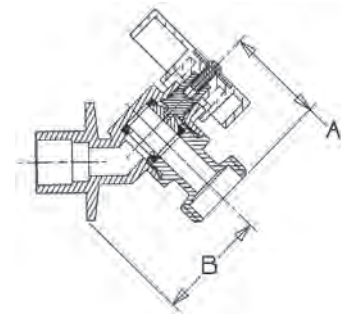
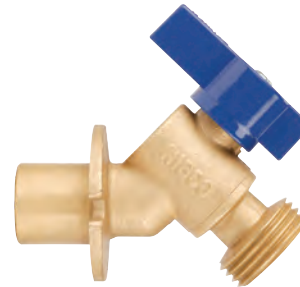
## MATERIAL LIST

PART	SPECIFICATION
Screw	Steel
I.D. Tag	Aluminum
Handle	Zinc
Stem	Brass ASTM B 16 UNS C36000
O-Ring	Nitrile
Seat	PTFE
Ball	Brass ASTM B 16 UNS C36000
Adapter	Brass ASTM B 283 UNS C37700
Body	Brass ASTM B 283 UNS C37700



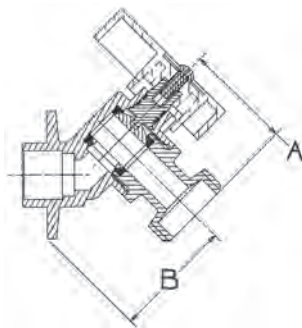
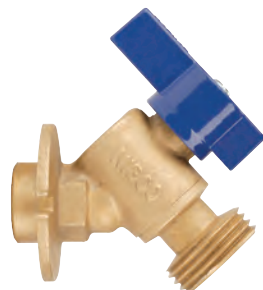
**QT63X**

DESCRIPTION	Nom. Size	DIMENSIONS		APPROX. NET WT.
		A	B	
<b>ANGLE SILLCOCK</b> Threaded to Hose	1/2	1.38"	1.77"	.44 lb
	3/4	1.38"	1.85"	.48 lb



**QT763IX**

DESCRIPTION	Nom. Size	DIMENSIONS		APPROX. NET WT.
		A	B	
<b>ANGLE SILLCOCK</b> 1/2 Cup or 3/4 Ftg. to Hose	1/2 or 3/4	1.38"	1.57"	.50 lb



**QT763X**

DESCRIPTION	Nom. Size	DIMENSIONS		APPROX. NET WT.
		A	B	
<b>ANGLE SILLCOCK</b> Solder to Hose	1/2	1.38"	1.54"	.43 lb
	3/4	1.38"	1.69"	.48 lb

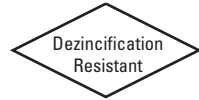
**WARNING:** This product can expose you to chemicals including lead, which is known to the State of California to cause cancer and birth defects or other reproductive harm. For more information go to [www.P65Warnings.ca.gov](http://www.P65Warnings.ca.gov).

**NOT FOR USE WITH POTABLE DRINKING WATER APPLICATIONS AFTER JANUARY 3, 2014.**

# 200 PSI CWP Bronze Gate Valves

Bronze Body • Screw-in Bonnet • Non-Rising Stem • Solid Wedge • Compact Design • Full Port

**200 PSI/14 Bar Non-Shock Cold Working Pressure**



## MATERIAL LIST

PART	SPECIFICATION
1. Handwheel Screw	Stainless Steel, Type 430
2. Handwheel	Aluminum
3. Stem	Bronze ASTM B 99 Alloy C65100 H04
4. Stem O-Ring	EPDM
5. Bonnet	Cast Brass ASTM B 584 Alloy C84400
6. Wedge	Cast Brass ASTM B 584 Alloy C84400
7. Body	Cast Brass ASTM B 584 Alloy C84400



**T-29**

Threaded

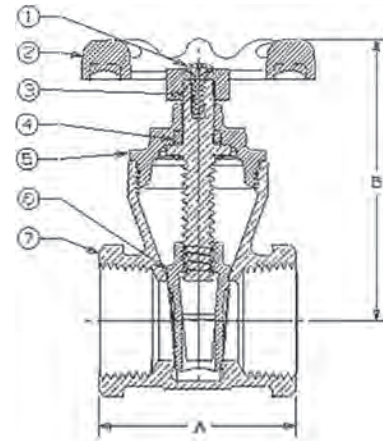


**S-29**

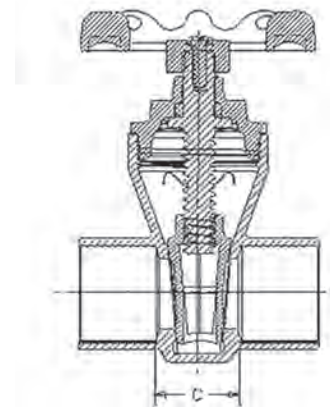
Solder

## DIMENSIONS — WEIGHTS

Size		A		B		C		Wt. Lbs.	
In.	mm.	In.	mm.	In.	mm.	In.	mm.	T-29	S-29
1/2	15	1.89	48	2.28	58	0.85	22	0.48	0.42
3/4	20	2.04	52	2.75	70	0.88	22	0.75	0.65
1	25	2.31	59	3.23	82	0.97	25	1.22	1.11
1 1/4	32	2.62	67	3.61	92	1.06	27	1.62	1.38
1 1/2	40	2.81	71	4.14	105	1.20	30	2.12	1.98
2	50	2.86	73	4.97	126	1.32	34	3.29	3.23



**T-29**  
NPT x NPT



**S-29**  
Cup x Cup



**WARNING:** This product can expose you to chemicals including lead, which is known to the State of California to cause cancer and birth defects or other reproductive harm. For more information go to [www.P65Warnings.ca.gov](http://www.P65Warnings.ca.gov).

**NOT FOR USE WITH POTABLE DRINKING WATER APPLICATIONS AFTER JANUARY 3, 2014.**

# Brass Gate Valve

Brass Body • Non-Rising Stem • Full Port

200 PSI/14 Bar Non-Shock Cold Working Pressure

## MATERIAL LIST

PART	SPECIFICATION
1. Nut	Steel plated ASTM A 108 Alloy G10100
2. Name Plate	Aluminum ASTM B 209 Alloy 1100
3. Handwheel	Cast Iron ASTM A 48 Class No. 35
4. Stem	Brass ASTM B 16 Alloy C36000
5. Packing Nut	Brass ASTM B 16 Alloy C36000 or B 584 Alloy C85700
*6. Gland	Brass ASTM B 16 Alloy C36000
7. Packing	Graphite/Rubber Non-Asbestos
8. Bonnet	Brass ASTM B 584 Alloy C85700
9. Lock Nut	Brass ASTM B 16 Alloy C 36000
10. Wedge	Brass ASTM B 584 Alloy C85700
11. Body	Brass ASTM B 584 Alloy C85700

\* Packing gland only for valves 1½" and larger.

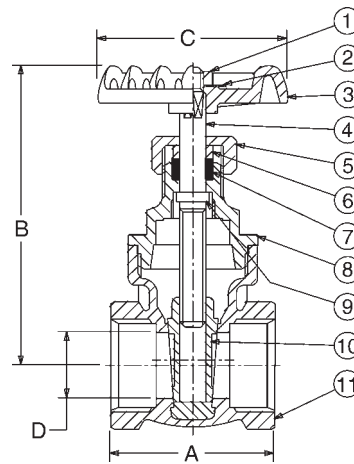
† Available with Drain in sizes ½" and ¾" for TI-8. Specify TI-8D on order.



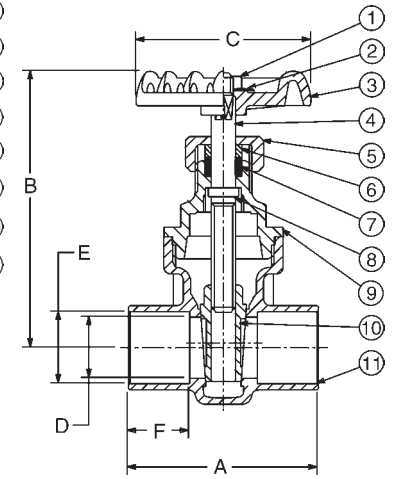
**TI-8**  
Threaded



**SI-8**  
Solder



**TI-8**  
NPT x NPT



**SI-8**  
Cup x Cup

## DIMENSIONS—WEIGHTS

Size	Dimensions																		WEIGHT						
	TI-8		SI-8		TI-8		SI-8		TI-8		SI-8		TI-8		SI-8		SI-8		TI-8		SI-8				
	A	A	B	B	C	C	D	D	E	F															
in.	mm.	in.	mm.	in.	mm.	in.	mm.	in.	mm.	in.	mm.	in.	mm.	in.	mm.	in.	mm.	in.	mm.	Lbs.	Kg.	Lbs.	Kg.		
¼	8	1.61	41	—	—	2.76	70	—	—	2.13	54	—	—	0.39	10	—	—	—	—	—	—	0.55	0.25	—	—
⅜	10	1.61	41	—	—	2.76	70	—	—	2.13	54	—	—	0.39	10	—	—	—	—	—	—	0.55	0.25	—	—
½	15	1.69	43	1.77	45	2.83	72	2.83	72	2.13	54	2.13	54	0.50	12	0.50	13	.63	16	0.50	13	0.59	0.27	0.59	0.27
¾	20	1.85	47	2.32	59	3.31	84	3.31	84	2.13	54	2.13	54	0.75	19	0.75	19	.88	22	0.75	19	0.77	0.35	0.77	.035
1	25	2.13	54	2.76	70	3.86	98	3.86	98	2.40	61	2.40	61	0.94	24	0.94	24	1.13	29	0.91	23	1.06	0.48	1.06	0.48
1¼	32	2.40	61	2.87	73	4.57	116	4.57	116	3.03	77	3.03	77	1.25	32	1.25	32	1.38	35	0.97	25	1.54	0.70	1.54	0.70
1½	40	2.56	65	3.19	81	4.92	125	4.92	125	3.03	77	3.03	77	1.48	38	1.48	38	1.63	41	1.09	28	2.11	0.96	2.11	0.96
2	50	2.83	72	3.90	99	6.02	153	6.02	153	3.27	83	3.27	83	1.94	49	1.94	49	2.13	54	1.34	34	3.17	1.44	3.17	1.44
*2½	65	3.50	89	4.61	117	7.32	186	7.32	186	4.13	105	4.13	105	2.48	63	2.48	63	2.63	67	1.47	37	3.79	2.63	5.79	2.63
*3	80	3.98	101	5.20	132	8.70	221	8.70	221	4.41	112	4.41	112	2.95	75	2.95	75	3.13	80	1.66	42	8.10	3.68	8.10	3.68
*4	100	4.57	116	—	—	10.16	258	—	—	6.67	172	—	—	3.62	92	—	—	—	—	—	—	20.94	9.52	—	—

\*Conventional Port only

**WARNING:** This product can expose you to chemicals including lead, which is known to the State of California to cause cancer and birth defects or other reproductive harm. For more information go to [www.P65Warnings.ca.gov](http://www.P65Warnings.ca.gov).

NOT FOR USE WITH POTABLE DRINKING WATER APPLICATIONS AFTER JANUARY 3, 2014.



# Bronze Ring Check® Valve

Inline Lift Type • Resilient Discs • Spring Actuated



**125 PSI/9 Bar Saturated Steam (PTFE Disc only)**  
**200 PSI/14 Bar Non-Shock Cold Working Pressure**

## MATERIAL LIST

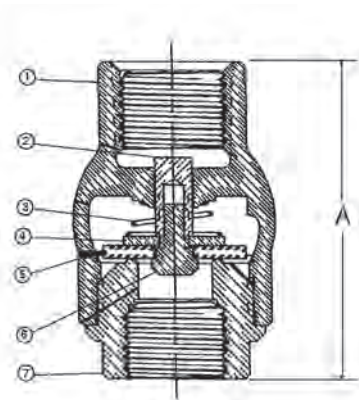
PART	SPECIFICATION
1. Body	Bronze ASTM B 584 Alloy C84400
2. Stem	Stainless Steel ASTM A 582 Alloy C30300
3. Spring	316 Stainless Steel
4. Disc Holder	Stainless Steel Type 301
5. Disc	Buna-N
6. Seat Screw	Stainless Steel ASTM A 276 Alloy S43000
7. Body End	Bronze ASTM B 584 Alloy C84400



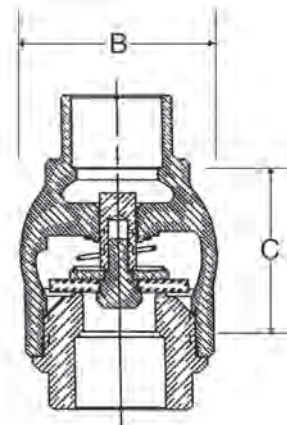
**T-480**  
Threaded



**S-480**  
Solder



**T-480**  
NPT x NPT



**S-480**  
Cup x Cup

## DIMENSIONS—WEIGHTS

Size	Dimensions						T-480		S-480		
	In.	mm.	In.	mm.	In.	mm.	In.	mm.	Lbs.	Kg.	
3/8	10	2.00	51	1.38	35	1.44	37	0.41	10	0.44	0.20
1/2	15	2.06	52	1.38	35	1.19	30	0.36	9	0.40	0.18
3/4	20	2.25	57	1.63	41	1.31	33	0.48	12	0.52	0.24
1	25	2.63	67	2.00	51	1.50	38	0.77	29	0.85	0.39
1 1/4	32	2.94	75	2.38	60	1.69	43	1.14	25	1.28	0.58
1 1/2	40	3.31	84	2.75	70	2.00	51	1.63	41	1.75	0.79
2	50	3.69	94	3.38	86	2.31	59	2.27	58	2.70	1.23

Ordering: The T-480 and S-480 both have standard Buna-N Discs.  
Also available with PTFE (Y) Discs; specify T-480-Y or S-480-Y.  
Note: 3/8" thru 2" require 1/2 pound pressure to open.

**WARNING:** This product can expose you to chemicals including lead, which is known to the State of California to cause cancer and birth defects or other reproductive harm. For more information go to [www.P65Warnings.ca.gov](http://www.P65Warnings.ca.gov).

**NOT FOR USE WITH POTABLE DRINKING WATER APPLICATIONS AFTER JANUARY 3, 2014.**

# Brass Check Valves

Brass Body • Swing Type Check

**200 PSI/14 Bar Non-Shock Cold Working Pressure**

## MATERIAL LIST

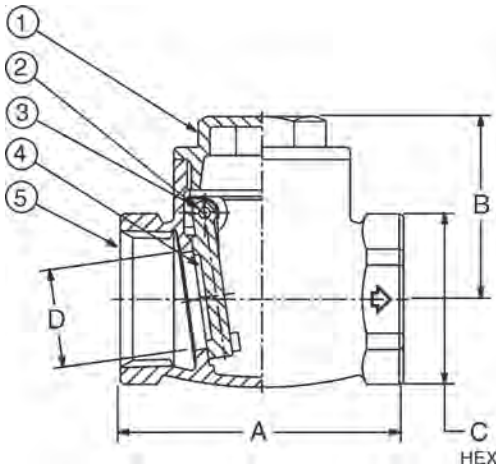
PART	SPECIFICATION
1. Bonnet	Bronze ASTM B 584 Alloy C85700
2. Plug	Bronze ASTM B 16 Alloy C36000
3. Pin	Brass ASTM B 16 Alloy C37700
4. Disc	Brass ASTM B 124 Alloy C37700
5. Body	Brass ASTM B 584 Alloy C85700 or Alloy C83600



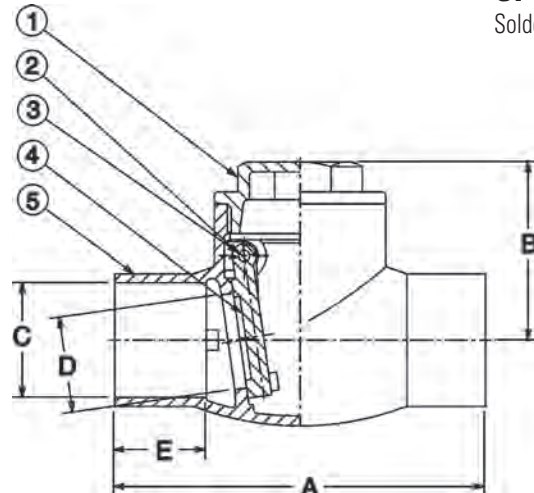
**TI-3**  
Threaded



**SI-3**  
Solder



**TI-3**  
NPT to NPT



**SI-3**  
Cup x Cup

## DIMENSIONS—WEIGHTS

Size	Dimensions																		WEIGHT						
	TI-3		SI-3		TI-3		SI-3		TI-3		SI-3		TI-3		SI-3		SI-3		TI-3		SI-3				
	A	A	B	B	C	C	D	D	E	A	A	B	B	C	C	D	D	E	A	A	B	B	Lbs.	Kg.	Lbs.
1/2	15	2.05	52	2.13	54	1.50	38	1.50	38	1.00	25	0.63	16	0.52	13	0.52	13	0.50	13	0.46	0.21	0.46	0.21		
3/4	20	2.32	59	2.99	76	1.57	40	1.57	40	1.22	31	0.88	22	0.70	18	0.70	18	0.75	19	0.66	0.30	0.66	0.30		
1	25	2.72	69	3.66	93	1.77	45	1.77	45	1.50	38	1.13	29	0.94	24	0.94	24	0.91	23	0.92	0.42	0.92	0.42		
1 1/4	32	3.11	79	4.09	104	2.01	51	2.01	51	1.85	47	1.38	35	1.24	32	1.24	32	0.97	25	1.60	0.73	1.60	0.73		
1 1/2	40	3.50	89	4.57	116	2.17	55	2.17	55	2.11	54	1.63	41	1.42	36	1.42	36	1.09	28	1.79	0.81	1.79	0.81		
2	50	4.29	109	5.51	140	2.64	67	2.64	67	2.60	66	2.13	54	1.81	46	1.81	46	1.34	34	2.87	1.30	2.87	1.30		
2 1/2	65	5.31	135	—	—	3.31	84	—	—	3.23	82	—	—	2.26	57	—	—	—	—	5.29	2.40	—	—		
3	80	6.30	160	—	—	3.78	96	—	—	3.78	96	—	—	2.70	69	—	—	—	—	8.82	4.01	—	—		
4	100	7.38	190	—	—	4.45	113	—	—	4.80	122	—	—	3.78	96	—	—	—	—	13.23	6.01	—	—		

**WARNING:** This product can expose you to chemicals including lead, which is known to the State of California to cause cancer and birth defects or other reproductive harm. For more information go to [www.P65Warnings.ca.gov](http://www.P65Warnings.ca.gov).

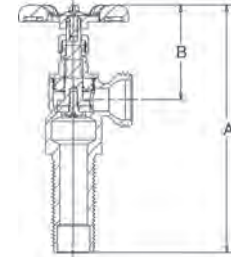
**NOT FOR USE WITH POTABLE DRINKING WATER APPLICATIONS AFTER JANUARY 3, 2014.**

# Washer Box Valves

125 lb. CWP to 100°F • Maximum Temperature 180°F

## MATERIAL LIST

PART	SPECIFICATION
1. Handle Screw	Carbon Steel
2. Handle	Aluminum
3. Packing Nut	Brass ASTM B 16
4. Packing	Graphite Impregnated Fibers
5. Bonnet	Brass ASTM B 584 Alloy C84400
6. Body	Brass ASTM B 584 Alloy C84400
7. Stem	Copper Alloy C10200
8. Seat	Buna-N
9. Seat Screw	Stainless Steel, Type 430
10. Wing Nut	Polypropylene



**64L 1-pc Bronze Long Shank Washer Box Valve**

DESCRIPTION	Size	DIMENSIONS		APPROX. NET WT.
		A	B	
Cup or NPSL/NPT to Hose	1/2	5.0"	1.82"	.54 lb

**WARNING:** This product can expose you to chemicals including lead, which is known to the State of California to cause cancer and birth defects or other reproductive harm. For more information go to [www.P65Warnings.ca.gov](http://www.P65Warnings.ca.gov).

**NOT FOR USE WITH POTABLE DRINKING WATER APPLICATIONS AFTER JANUARY 3, 2014.**

# PVC Ball Valves

One-Piece Molded PVC Body • Threaded or Socket Ends  
Schedule 80

**150 PSI/10.3 Bar Non-Shock Cold Working Pressure to 73° F/23° C**

**NSF Listed to NSF/ANSI 14 ½"- 2" Sizes**

**NSF/ANSI/CAN 61 All Sizes**

**NSF/ANSI/CAN 372 All Sizes**

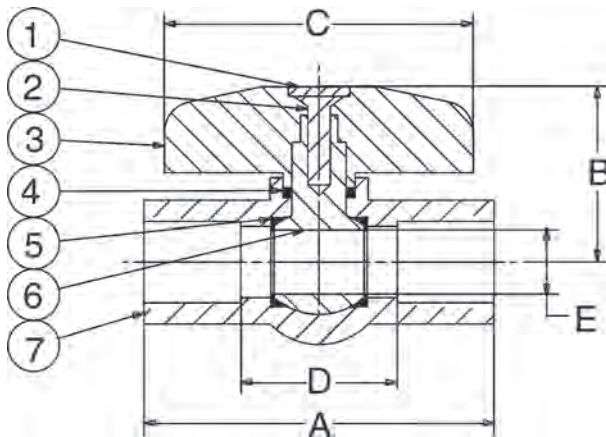


**4660-S**  
Socket Weld

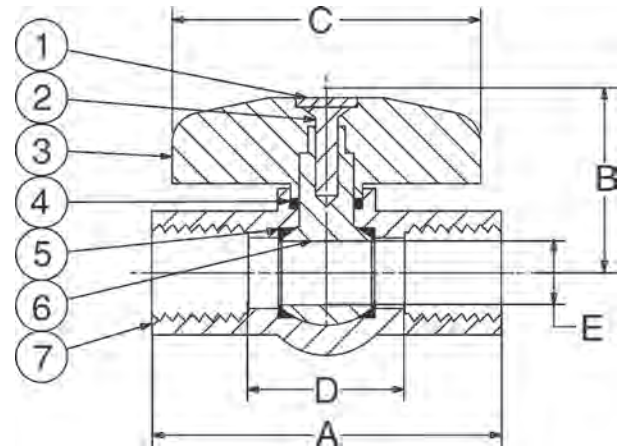
**4660-T**  
Threaded  
(not shown)

## MATERIAL LIST

PART	SPECIFICATION
1. Handle Cap	ABS
2. Screw	Zinc Plated Steel
3. Handle	ABS
4. O-Ring	EPDM
5. Seat Seal (2)	EPDM
6. Ball	PVC ½"- 2" Sizes PP 2 ½"- 4" Sizes
7. Body	PVC



**4660-S**  
Socket x Socket



**4660-T**  
Threaded x Threaded

## DIMENSIONS—WEIGHTS

Size	Dimensions										Weight		Master Ctn. Qty	
	A		B		C		D		E		Lbs.	Kg.		
In.	mm.	In.	mm.	In.	mm.	In.	mm.	In.	mm.	In.	mm.			
½	15	3.27	83	1.77	45	2.76	70	1.52	39	0.55	14	0.18	0.08	100
¾	20	3.74	95	2.13	54	3.46	88	1.74	44	0.79	20	0.31	0.14	100
1	25	4.17	106	2.56	65	3.94	100	1.92	49	0.98	25	0.49	0.22	100
1¼	32	4.49	114	2.64	67	3.94	100	1.99	51	1.18	30	0.57	0.26	100
1½	40	5.12	130	2.99	76	4.29	109	2.37	60	1.42	36	0.88	0.40	48
2	50	5.79	147	3.50	89	5.28	134	2.79	71	1.83	46.5	1.50	0.68	48
2½	65	8.03	204	4.13	105	7.01	178	4.53	115	2.28	58	2.73	1.24	12
3	80	9.02	229	4.88	124	8.82	224	5.27	134	3.03	77	4.01	1.82	12
4	100	11.81	300	5.83	148	10.87	276	7.31	186	3.86	98	8.29	3.77	6

Note: Socket ends per ASTM D 2467  
Thread ends per ASME B1.20.1

**WARNING:** This product can expose you to chemicals including styrene, which is known to the State of California to cause cancer. For more information go to [www.P65Warnings.ca.gov](http://www.P65Warnings.ca.gov).

**\* DO NOT USE OR TEST THE PLASTIC VALVES LISTED IN THIS CATALOG WITH COMPRESSED AIR OR OTHER GASSES.**

# CPVC-CTS Ball Valve

One-Piece Molded CPVC Body • Socket Ends

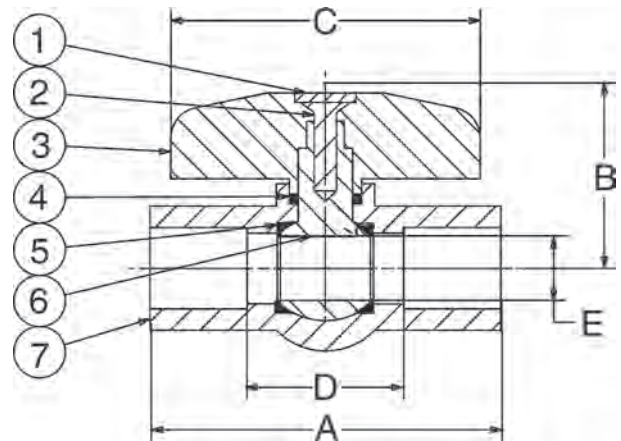
**150 PSI/10.3 Bar Non-Shock Cold Working Pressure to 73° F/23° C**  
**NSF Listed to NSF/ANSI/CAN 61**  
**NSF/ANSI/CAN 372**



**4770**  
Socket Weld

## MATERIAL LIST

PART	SPECIFICATION
1. Handle Cap	ABS
2. Screw	Zinc Plated Steel
3. Handle	ABS
4. O-Ring	EPDM
5. Seat (2)	PTFE
6. Ball	CPVC
7. Body	CPVC



**4770**  
Socket x Socket

## DIMENSIONS—WEIGHTS

Size	Dimensions										Weight		Master Ctn. Qty	
	A		B		C		D		E		Lbs.	Kg.		
In.	mm.	In.	mm.	In.	mm.	In.	mm.	In.	mm.	In.	mm.			
½	15	2.68	68	1.42	36	2.36	60	1.68	43	0.47	12	0.19	0.09	100
¾	20	3.27	83	1.77	45	2.76	70	1.87	47	0.71	18	0.35	0.16	100
1	25	3.74	95	2.13	54	3.46	88	1.94	49	0.94	24	0.54	0.25	100
1¼	32	4.17	106	2.56	65	3.94	100	1.97	50	0.98	25	0.70	0.32	100
1½	40	4.49	114	2.64	67	3.94	100	1.89	48	1.18	30	1.06	0.48	48
2	50	5.71	145	2.99	76	4.29	109	2.29	58	1.42	36	1.73	0.79	48

Note: Socket ends per ASTM D 2846.

**WARNING:** This product can expose you to chemicals including styrene, which is known to the State of California to cause cancer. For more information go to [www.P65Warnings.ca.gov](http://www.P65Warnings.ca.gov).

**\* DO NOT USE OR TEST THE PLASTIC VALVES LISTED IN THIS CATALOG WITH COMPRESSED AIR OR OTHER GASSES.**

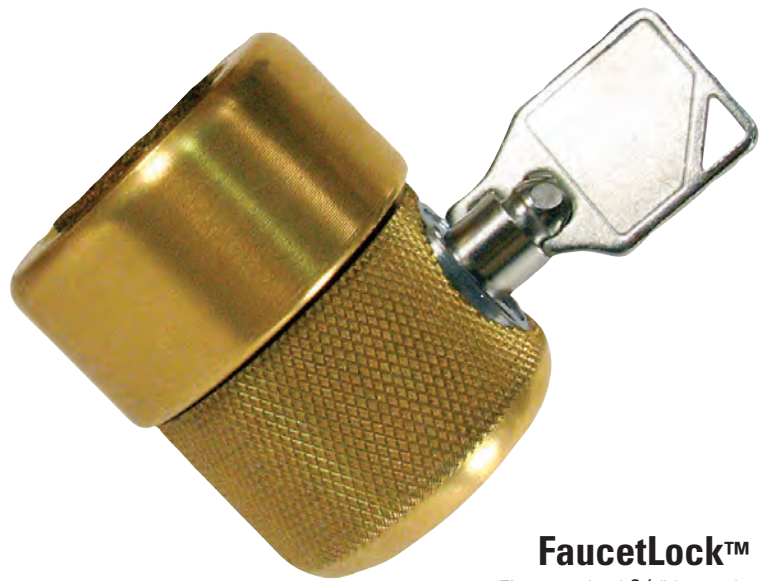
# FAUCETLOCK™

## Protect Your Water Supply

Perfect for use in your:

- Front & Backyard,
- Vacation Home, Condo,
- Apartment House,
- Dock, Campsite,
- Storefront, School,
- Trailer Park,
- Parking Lot,
- Gas Station...

**Save Water ... Save Money**



### FaucetLock™

Fits standard 3/4" hose thread

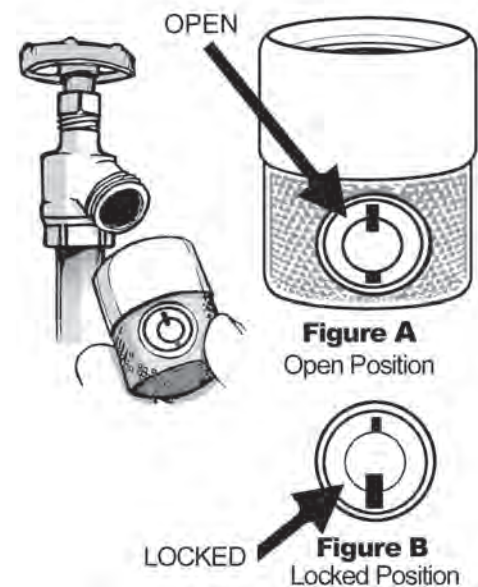


**Extra Key Included**  
**No Tools Required**  
**Twist On & Lock**  
PATENT PENDING











### Installation Instructions

1. Inspect FaucetLock's threads for dirt and debris, and clean if necessary.
2. View lock, make sure key notches are in aligned (OPEN) position. (See Figure A)
3. Hold lock by its textured ring and screw onto hose bibb in a clockwise direction until tight.
4. Insert key and turn clockwise half a turn then remove key. FaucetLock is now in its secured and locked position. (See Figure B) (FaucetLock is secured on hose bibb if the textured ring spins freely)
5. To remove FaucetLock, insert key and rotate half a turn counterclockwise. Remove key. Hold textured ring and turn counterclockwise until FaucetLock screws off the hose bibb.
6. While FaucetLock is detached from hose bibb, be careful not to allow dirt or debris to get into lock or threads.

*Freezing weather precaution: If installed on a frostproof sillcock, make sure valve has had time to drain after closing and before installation of FaucetLock™.*



# Low Pressure Valve Handwheel Options & Accessories

<p><b>Standard No Kink and Hose Bibbs Tee Handle</b></p> <p>Sizes 1/2" - 3/4". Available as standard for all NIBCO valves with spline drive. Blue or silver color</p>	
<p><b>Cross Handles for the Classic Pro and T or S29 Valves</b></p> <p>Available for Classic Pro or T/S 29 Valves 1/2" thru 2". Used where standard handwheel would be out of reach or hand space is restricted. For field replacement, specify valve type and size. Spline drive only.</p>	
<p><b>Iron Handwheel for Brass Gate Valves</b></p> <p>Available for NIBCO 1/4" thru 4". For field replacement, specify valve type and size. Square Stem Only.</p>	
<p><b>Lock Shield Bonnet Assembly Lockshield</b></p> <p>Available for NIBCO Classic Pro and Husky Valves 1/2"-3/4", except straight hose bibbs. Use where valve might be subject to unauthorized use or tampering.</p>	
<p><b>Lockshield Handwheel</b></p> <p>Available for NIBCO Classic Pro and Husky Valves, except straight bibbs. Used as handle for lockshields. Specify – "Lockshield Handle." For field replacement, specify valve type and size. Spline drive only.</p>	
<p><b>Classic Pro Handwheel (2 1/8" Round)</b></p> <p>Available for NIBCO Classic Pro valves 1/2"-3/4". Fits spline stem only. Available in blue or red.</p>	
<p><b>29 Replacement Handwheel</b></p> <p>Available for NIBCO S or T 29 Bronze Gate Valve sizes 1/2"-2". For field replacement only.</p>	
<p><b>Stem Extension</b></p> <p>Available for any 1/2" - 2" 580-A Series and 1/4" - 4" FP-600-A Series brass ball valves. Allows for 2" of insulation.</p>	
<p><b>Waste Cap with Rubber Gasket</b></p> <p>A fast and convenient means for draining sections of line between valves. Fits NIBCO Low Pressure Valves sizes 1/4" - 3/4".</p>	
<p><b>C750 Vacuum Breaker</b></p> <p>Fits 3/4" hose thread ends — hose bibbs, sillcocks, boiler drains. Break off screw for permanent installation.</p>	

NIBCO INC. reserves the right to change materials, options and accessories without notice.

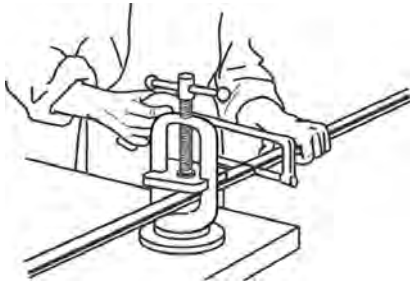
# Installation Instructions for Metal Connections

Analyze the application to determine which valve is best suited for installation, keeping in mind the service for which the valve is recommended. Before installing the correct valve, review the following installation instructions to prevent damage to the valve and assure its maximum efficiency.

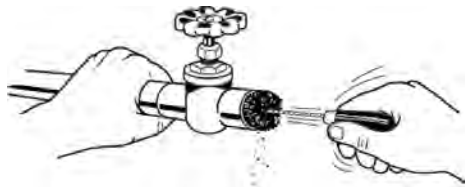
For Plastic Installation Instructions, contact Technical Services at 1.888.446.4226.

## SOLDERING

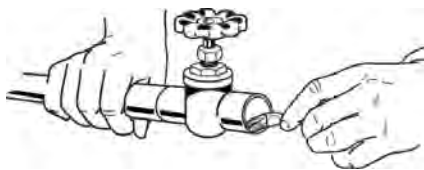
1. Cut tube end square. Ream, burr and size.



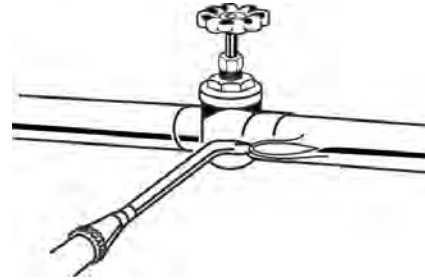
2. Use sand cloth or steel wire brush to clean both tube and cup to a bright metal. Steel wool is **not** recommended.



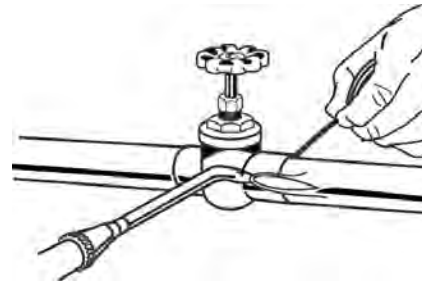
3. Apply flux to outside of tube and inside of solder cup. Surfaces to be joined must be completely covered. Use flux sparingly.



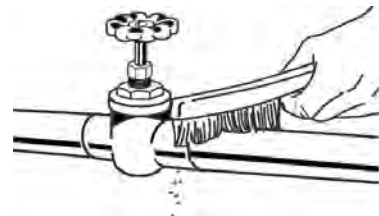
4. **Be sure that valve is fully open.** This applies only to globe and gate valves. Apply heat to tube first. Transfer as much heat as possible through the tube into the valve. Avoid prolonged heating of the valve itself. **For ball valves,** consult the installation instruction sheet or contact NIBCO Technical Services for assistance.



5. Use just enough solder: with wire solder, use 1" for 3/4" valve, etc. If too much solder is use, it may flow past tube and clog seating area. **The correct amount of solder is 1 1/2 times the diameter of the fitting or valve.**



6. Remove excess solder with small brush while plastic (soft), leaving a fillet around end of valve as it cools.



## BRAZING

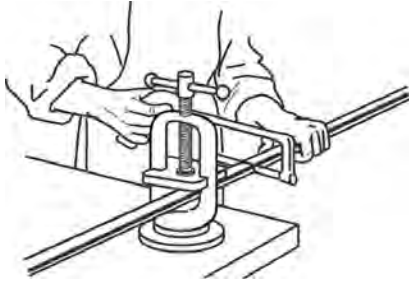
The strength of a brazed joint does not vary appreciably with the different brazing materials, but depends to a large extent upon the maintenance of proper clearance between the outside of the tube and the valve socket. The interior dimensions of brazing valve sockets are machined to the closest tolerances and finished smooth to promote full capillary attraction.

NOTE: Care should be observed in cleaning and in removing residues of the cleaning medium. Attempting to braze a contaminated or improperly cleaned surface will result in an unsatisfactory joint. Brazing alloys will not flow over or bond to oxides. Oily or greasy surfaces repel fluxes, leaving bare spots that oxidize and result in voids and inclusions.

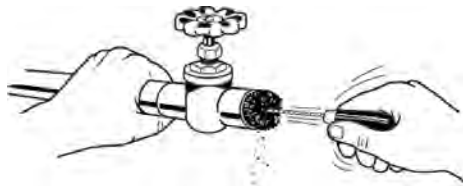


## Installation Instructions for Metal Connections (cont.)

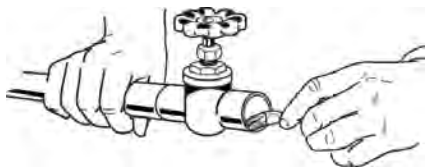
1. Cut tube end square to exact length needed, so that tube will enter valve socket all the way to the shoulder. Ream, burr and file.



2. Clean tube to a distance slightly more than what will fit into the socket, and clean valve socket. Wire brushes may be used, but avoid removing an excessive amount of metal. Fine sand cloth or emery cloth may be used with the same precautions. Steel wool is **not** recommended.



3. Apply flux to tube and socket sparingly and with a fairly thin consistency. Avoid flux on areas not cleaned, particularly inside of tube.

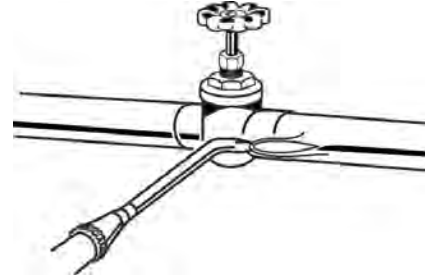


4. Assemble parts to be brazed. If fluxed parts are allowed to stand, the water in the flux will evaporate. Dried flux is liable to flake off, exposing metal surfaces to oxidation. Assemble joint by inserting tube into socket hard against the stop. The assembly should be firmly supported so that it will remain in alignment during the brazing operation. **Removal of bonnet is recommended when installing globe valves with soft seats.**

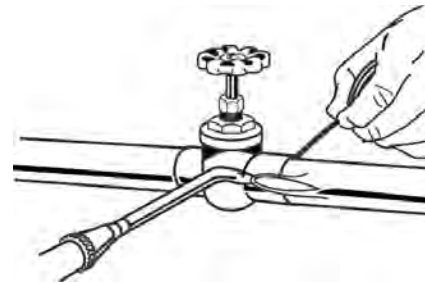
5. Apply heat to parts to be joined. The preferred method is by oxy-acetylene flame. Heat tube first, beginning one inch from edge of valve. Sweep flame around tube in short strokes up and down at right angles to run of tube. To avoid burning through tube, the flame should be in continuous motion and not allowed to remain on any one point.

Apply flame to valve at base of socket. Heat uniformly, sweeping flame from fitting to tube until flux on fitting becomes quite. Avoid excessive heating of valve.

When flux appears liquid and transparent on both tube and valve, start sweeping flame back and forth along axis of joint to maintain heat on parts to be joined, especially toward the base of the valve socket.



6. Apply brazing wire or rod at point where tube enters valve socket. Keep flame away from rod or wire as it is fed into the joint. Move flame back and forth as alloy is drawn into joint. When the proper temperature is reached, alloy will flow readily into space between tube outer wall and valve socket. When joint is filled, a continuous rim of brazing alloy will be visible.



### THREADING

Grit, dirt or any foreign matter accumulated in the pipe can hinder efficient valve operation and seriously damage vital valve parts. Thoroughly clean pipe internally with air or steam.

When threading pipe, gauge pipe threads for size and length to avoid jamming pipe against seat and disc. Thoroughly clean threaded end to remove any harmful steel or iron deposits. Apply pipe dope sparingly on pipe threads, never on valve threads. Do not allow any pipe dope into valve body in order to avoid damage to disc and seat.

Before installation, check line of flow through valve so that valve will function properly. Close valve completely before installation. Apply wrench to hex next to pipe and guard against possible distortion. After installation of valve, support the pipe line; a sagging pipe line can distort the valve and cause failure.

### COMPRESSION

For compression end connection, first slide compression nut onto copper tube, then slide on ferrule. Install the valve onto the copper tube and gently slide compression nut and ferrule up to the valve to engage. Do not use pipe dope. Tighten nut until resistance is felt. Tighten additional 1/2 turn. **DO NOT OVER TIGHTEN!**

# Installation Instructions for Frostproof Sillcock

## HOW THE FIGURE 95C WORKS

As shown on the schematic drawing on the right, the closing member (stem and disc assembly) of the Figure 95C Frostproof Sillcock operates by turning the handle in a clockwise manner to close and counter-clockwise to open.

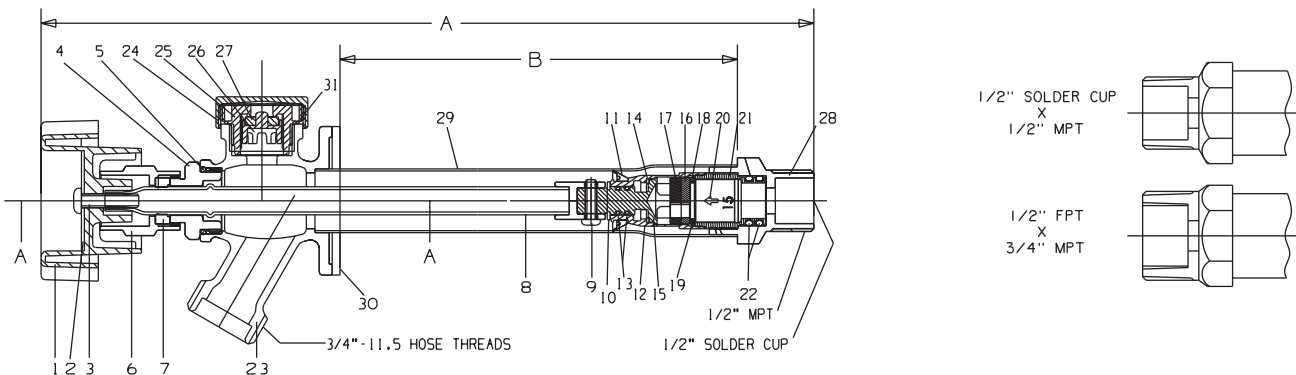
The valve's seat is at the opposite end from the handle. The valve is designed so that the seat area is situated safely behind the insulation of the home's exterior wall. This is to prevent the seat area from being exposed to freezing temperatures. Depending on the region of installation, the stem length is available in varying dimensions to accommodate the various insulation thicknesses behind the wall. The valve's "rough-in" dimension (see "A" dimension) pertains to the thickness of insulation and is measured from the frostproof sillcock's flange to the valve seat and is available in lengths 4", 6", 8", 10", 12" and 14".

The Figure 95C is designed to employ an integral back-flow prevention device to prevent potential back-siphonage. This back-siphonage, if unchecked, could compromise the safe potable water supply to the home, resulting in sickness or death.

The independent testing bodies, American Society of Sanitary Engineering and Canadian Standards Association, have validated the valve's primary and preventative functions.

## TIPS FOR LONG LIFE

1. The hose should be carefully moved about, so as not to cause abnormal tension via pulling and/or jerking.
2. If the hose is left on the Figure 95C in freezing weather, the valve's self-draining feature will protect the sillcock from freeze damage if: 1) the nozzle is not left affixed to the hose; and 2) the entire hose length is on a plane lower than the fixed position of the frostproof sillcock.
3. The key to the Figure 95C being able to withstand and operate in freezing weather is that the closing member (seat disc) is inside the heated building. If the heat is temporarily shut down for a length of time that would allow freezing to take place, all water lines should be drained.
4. The figure 95C closes at the inlet of the sillcock. You will notice that it will drip for a few seconds after being closed. Wait at least 10 seconds.



## INSTALLATION INSTRUCTIONS

1. Bore a 1 1/4" dia. hole through the wall in the desired position. A slight upward slope when drilling hole will aid sillcock in draining.
2. Insert the sillcock through the hole and position spout downward. To help position the sillcock from inside the building, "TOP" is marked on the inlet end.
3. Connect water supply line to sillcock inlet using appropriate style connection.
4. Secure sillcock flange to wall using suitable screws. For installation on lapped siding, a plastic siding plate is supplied to give a finished look.

\* **Warning: Avoid overheating when soldering — it could cause internal damage to seat area.**

# NIBCO® Specialty Valve Products Limited Warranty

## NIBCO INC. LIMITED WARRANTY

Applicable to NIBCO Specialty Valve Products Only

NIBCO INC. warrants each NIBCO specialty valve products (the "NIBCO Products") to be free from defects in materials and workmanship under normal use, service, and maintenance in accordance with the product specifications (including, but not limited to installation recommendations) for a period of two (2) years from the date of purchase.

NIBCO will repair or replace – at its option and at no charge – NIBCO Products that have been determined by NIBCO, or an authorized representative or agent thereof, to have failed solely because of a defect in materials or workmanship under normal use, service, and maintenance during the warranty period. Replacements shall be shipped free of charge to the owner. NIBCO shall further pay the installing contractor the sum of fifty (\$50.00) dollars to be applied toward the cost of installation of the replacement NIBCO Product.

This limited warranty applies to all NIBCO Products installed, tested, applied, and used in accordance with NIBCO's approved and published recommendations and instructions.

This warranty does not cover any failure or damage for or caused by:

1. any product, parts, or systems which are not manufactured or sold by NIBCO;
2. any NIBCO Product which is used for purposes other than a purpose authorized by NIBCO;
3. any NIBCO Product not installed, tested, applied, used, or maintained in accordance with NIBCO's recommended installation guidelines and instructions;
4. any NIBCO Product not installed or used in accordance with applicable codes;
5. any damage caused by, contributed in whole or in part by, or resulting from, any of the following:
  - a. abuse, misuse, mishandling, alteration, tampering, neglect, or accidental damage such as, without limitation, vandalism;
  - b. natural disasters, such as, without limitation, flooding, windstorm, and lightning;
  - c. attachments or modifications not authorized by NIBCO;
  - d. external, physical or chemical qualities, or an unsuitable or hostile environment;
  - e. any defects other than those in material or workmanship; or
  - f. any other cause beyond the control of NIBCO.

NIBCO DISCLAIMS ANY AND ALL LIABILITY FOR ANY OTHER DIRECT OR INDIRECT, INCIDENTAL, OR CONSEQUENTIAL DAMAGES OF ANY KIND, INCLUDING BUT NOT LIMITED TO, ECONOMIC LOSS, LOSS OF BUSINESS, LOST PROFITS, PUNITIVE DAMAGES, MOLD INTRUSION, WATER DAMAGE, ETC.

Some states do not allow the exclusion or limitation of damages, so the above limitation or exclusion may not apply to you.

THIS WARRANTY IS THE ONLY WARRANTY FOR THE NIBCO PRODUCTS PROVIDED BY NIBCO, AND IS AND SHALL BE IN LIEU OF ANY AND ALL OTHER WARRANTIES, EXPRESSED OR IMPLIED, INCLUDING, BUT NOT LIMITED TO, AN IMPLIED WARRANTY OF MERCHANTABILITY OR FITNESS FOR A PARTICULAR PURPOSE, AND FOR ALL OTHER OBLIGATIONS OR LIABILITIES ON THE PART OF A MANUFACTURER. NO EMPLOYEE OF NIBCO, OR ANY OTHER DISTRIBUTOR, AGENT, OR OTHER PERSON OR BUSINESS, IS AUTHORIZED TO MAKE ANY OTHER WARRANTY ON BEHALF OF NIBCO.

Some states do not allow limitations on implied warranties, so the above limitation may not apply to you.

In the event any defect occurs which is believed to be covered by this warranty, NIBCO Technical Services must immediately be contacted by calling 888.446.4226 or emailing CS-TechnicalServices@nibco.com. NIBCO Technical Services after being contacted will make further arrangements for the product's return to NIBCO. at the customer's expense for review and evaluation.

This warranty gives you specific legal rights, and you may also have other rights which vary from state to state.



## How to Order

State quantity, figure number and size for each valve or fitting you wish to order. See individual catalog pages for specific or special product designations.

### HOW MANY TO ORDER

NIBCO valves and fittings are decimal packed for your convenience in handling, shipping and stock-keeping. Number in master carton varies with item.

### POLICY ON RETURNS TO FACTORY

No NIBCO valves and fittings are to be returned without prior written agreement. Transportation must be prepaid. A 20% charge will be made to cover cost of rehandling and reinspection.

### TECHNICAL ASSISTANCE

Engineers, contractors, wholesalers or manufacturers may obtain special or technical assistance from any factory representative of NIBCO. Write, fax or phone.

NIBCO INC.  
World Headquarters  
1516 Middlebury Street  
Elkhart, IN 46516-4740  
USA

PH: 1.574.295.3000 or 1.888.446.4226

FAX: 1.574.295.3307 or 1.888.336.4226

To the best of our knowledge, the information contained in this publication is accurate. However, NIBCO does not assume any liability whatsoever for the accuracy or completeness of such information. Final determinations of the suitability of any information or product for the use to be contemplated is the sole responsibility of the user. The manner of that use, and whether there is any infringement of patents, is also the sole responsibility of the user.

# Notes

# Notes

# globally connecting you at all levels

It's a new age of business, and a new way at NIBCO. From Elkhart, Indiana to Lodz, Poland, and points beyond, our company has integrated manufacturing, distribution, and networked communications to provide a seamless source of information and service, 24 hours a day, 7 days a week. But this integration hasn't happened overnight. It's been part of a long-term strategic process that has pushed us to reconsider every aspect of our business. The result? We're a vertically integrated manufacturer with the products and systems in place to deliver low cost and high quality. NIBCO products are manufactured under a Quality Management System conforming to the current revision of ISO-9001 International Standards. We know the flow control industry is only going to get more demanding, and we are more than ready. We will continue to lead. That's what NIBCO is all about.



World Headquarters



## MANUFACTURING

Metal Valves and Fittings



Blytheville, Arkansas



McAllen, Texas



Nacogdoches, Texas



Stuarts Draft, Virginia



Worcester, Massachusetts

Plastic Pipe, Valves, and Fittings



Greensboro, Georgia



Goshen, Indiana

Industrial Plastics



Charlestown, Indiana

## DISTRIBUTION

International



Reynosa, Mexico



Lodz, Poland

U.S. Distribution Centers



Elkhart, Indiana

## INTERNATIONAL

Global Offices



Elkhart, Indiana



Lodz, Poland

\*Denotes U.S. and International Direct Shipping Locations

## VALVES

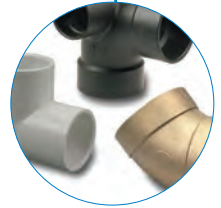


Pressure-rated bronze, iron and alloy-iron gate, globe and check valves • Pressure-rated bronze ball valves • Boiler specialty valves • Commercial and industrial butterfly valves • Lined butterfly valves • Circuit balancing valves and kits • Carbon and stainless steel ball valves • ANSI flanged steel ball valves • Lined ball valves • Pneumatic and electric actuators and controls • Grooved ball and butterfly valves • High performance butterfly valves • UL/FM fire protection valves • MSS specification valves • Bronze specialty valves • Low pressure gate, globe, check and ball valves • Frostproof sillcocks • Quarter-turn supply stops • Quarter-turn low pressure valves • PVC and CPVC plumbing and industrial ball valves • Bronze and iron y-strainers • Sample valves • Sanitary valves • Lead-free valves • Hydronic valves • Labor saving valves • Manifold systems • Water temperature control valves • System quality valves • Press x PEX transition valves

## FITTINGS

Wrot and cast copper pressure and drainage fittings • Cast copper alloy flanges • Powder coated steel companion flanges • Wrot and cast press fittings • ABS and PVC DWV fittings • Schedule 40 PVC pressure fittings • CPVC CTS fittings • CPVC CTS-to-metal transition fittings • Schedule 80 PVC and CPVC systems • Lead-free fittings • Press x PEX transition fittings • Cast bronze push fittings

LEAD-FREE: Weighted average lead content ≤0.25%



## INDUSTRIAL PLASTICS



PVC and Corzan® CPVC schedule 80 fittings, true union ball and ball check valves, butterfly valves, and specialty valves • Polypropylene and Kynar® PVDF schedule 80 pipe, fittings, and true union ball and ball check valves • Pneumatic and electric actuation systems

Corzan® are registered trademarks of the Lubrizol Corporation  
Kynar® is a registered trademark of Arkema Inc.

## eNIBCO

EDI—Electronic Data Interchange • VMI—Vendor Managed Inventory • NIBCO.com • NIBCOpartner.com



# NIBCO®

AHEAD OF THE FLOW®

**NIBCO INC.**  
**WORLD HEADQUARTERS**  
WEB: [www.nibco.com](http://www.nibco.com)

1516 MIDDLEBURY STREET  
ELKHART, IN 46516-4740  
USA

DOMESTIC CUSTOMER SERVICE  
PHONE: 800.234.0227  
FAX: 800.234.0557

TECHNICAL SERVICE  
PHONE: 888.446.4226  
FAX: 888.336.4226

INTERNATIONAL OFFICE  
PHONE: +1/574.295.3327  
FAX: +1/574.295.3455