

Type DKH

High-pressure / high-temperature steam cooler for extreme conditions



> Type DKH, front view



> Type DKH, sectional view

Product features

- Special design for higher pressures and higher temperatures
- The DKH injection cooler works like the DKV type, with controlled nozzle technology (pressure atomization via controlled nozzle technology)
- Spray head with integrated high-performance nozzles and excellent atomization
- No additional control valve required
- Selectable control characteristics for precise temperature control
- Tightly closing metallic seat
- Large permissible water vapor pressure difference Δp up to 100 bar / 1450 PSI
- High control accuracy over the entire control range
- High operational reliability by using simple components, minimal wear and tear
- Excellent control accuracy over the entire control range
- Special materials available

Applications

For the special demands placed on temperature control in power plants and in the process industry

Type DKH

High-pressure / high-temperature steam cooler for extreme conditions

Technical data

Nominal diameter	DN 150–1200 / NPS 6–48
Pressure class	PN 250–400 / Class 1500–2500
Temperature range	650 °C / 1200 °F
Housing material	1.0460 / A105 1.5415 1.7335 / A182F12Cl.2 1.7383 / A182F22Cl.3 1.4903 / A182F91
Housing type	Forged
Media	Superheated steam, gas
Flanges	EN 1092-1, ASME B16.5, ISO 7005, JIS, JPI
Actuators	Electric, pneumatic, hydraulic, handwheel (for manual operation)
Number of stages (max.)	1
Number of controlled stages (max.)	1
Operating range (max.)	1:100 (water)

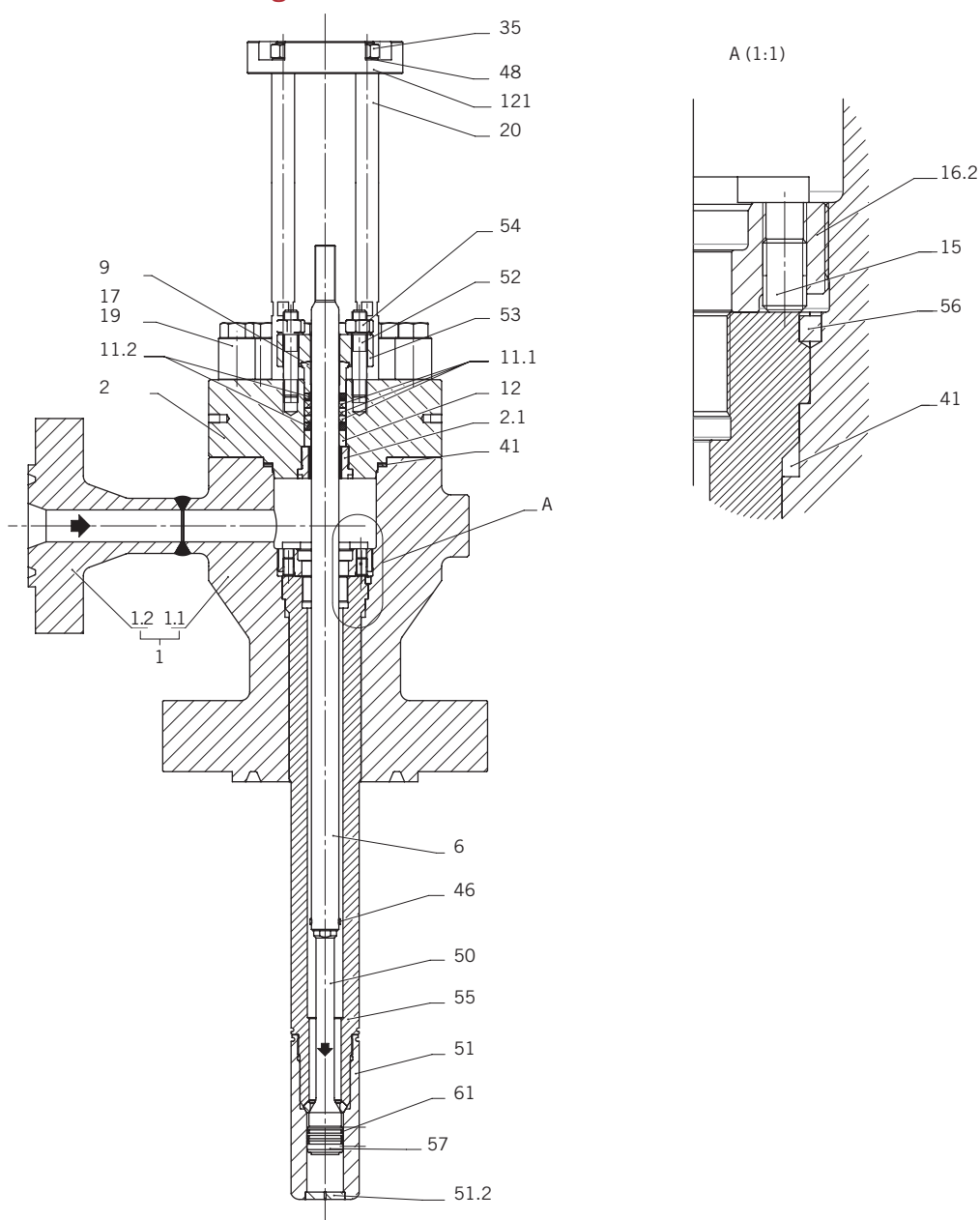
Function

see chapter DKV (Page 69)

Type DKH

High-pressure / high-temperature steam cooler for extreme conditions

Sectional drawing



Type DKH

High-pressure / high-temperature steam cooler for extreme conditions

Parts list

Pos.	Item	Material
1	Housing cpl.	*
1.1	Housing	*
1.2	Flange	*
2	Cap	*
2.1	Bushing	*
3	Cap gasket	Grafit
6	Valve spindle	1.4057
9	Packing follower	1.4122
11.1	Packing	Grafit
11.2	Packing	Grafit
15	Threaded pin	A2
17	Capped nut	**
19	Stud bolt	**
20	Spacer bolt	**
35	Hexagon nut	8
41	Spiral gasket	1.4541/Grafit
46	Pin	1.4301
48	Lock washer	1.1211
50	Control piston	1.4122
51	Spray head	1.4006
51.2	Ground plate	1.4006
52	Stud bolt	**
53	Gland plate	*
54	Hexagon nut	**
55	Lance	*
56	Pin	1.4122
57	Spray nozzle	**
61	Piston ring	**
121	Plate	1.0460

* See table "Technical data"

** Depending on customer requirements

Parts list as an example of the standard configuration

Type DKH

High-pressure / high-temperature steam cooler for extreme conditions

Dimensions

