

rotork®

Keeping the World Flowing
for Future Generations

Subsea Valve Actuation



High performance subsea actuators and gearboxes

Product and Services Overview

With an actuator installed base dating back to 1992 operating at depths ranging from 30m to over 2,400m, Rotork is familiar with supplying subsea products to meet the stringent demands of subsea valve actuation. The installed base covers pressure compensated rack and pinion, scotch yoke and linear subsea actuator designs with ROV or diver operated facilities for both double-acting and spring-return applications.

Complementing our Rotork Fluid Systems subsea actuators is a range of subsea gearboxes, also with diver or ROV operable overrides. These are designed and engineered by the dedicated gearbox manufacturers within the Rotork Gears division. The engineering groups of Rotork Fluid Systems and Rotork Gears share databases, engineering knowledge and test facilities to provide a comprehensive subsea solution.

Our combined subsea product range encompasses designs for both retrievable and non-retrievable applications. For retrievable applications such as some SSIV requirements, the designs manufactured and supplied provide for interchangeability of the actuator with a gearbox. This is achieved using transition spools and quick release methods.

Typical RFS Subsea Actuator Applications

- FPSO (Floating Production Storage Offloading)
- Manifold Systems
- Tie-backs
- Ballast Systems
- Turrets
- CALM Buoys (Catenery Leg Mooring)
- ESD or riser valves
- PLET (Pipeline End Terminal)
- PLEM (Pipeline End Manifold)
- SSIV (Subsea Isolation Valve)
- HIPPS (High-Integrity Pipeline Protection System)



Actuator Range



GSH SCOTCH YOKE
Torque to 1,300,000 Nm



GSR - RACK AND PINION
Torque to 5,600,000 Nm

GSR - LINEAR
Thrust to 5,500,000 Nm (double-acting)
Thrust to 400,000 Nm (spring-return)

Gearbox Range



WGS - WORM WHEEL
Torque to 1,000,000 Nm



DS - DIRECT GEAR
Torque to 19,000 Nm

SGS - SPUR GEAR
Torque to 44,000 Nm

BGS - BEVEL GEAR
Torque to 50,000 Nm



Key Design Features

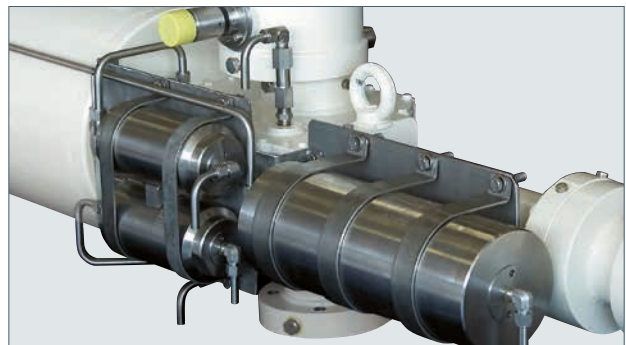
Rotork Fluid Systems' experience with subsea applications and product design extends to incorporate a variety of subsea controls items. The following is an extract of our designs, features, facilities and capabilities.

Design Options

- Actuator declutch system for operation of the actuator independent of the valve.
- Actuator and gearbox declutch system to provide interchangeability between similar pipeline valves.
- ROV and diver operated actuator manual override via an ISO 13628-8 torque tool receptacle.
- ROV torque tool operated override lock-out.
- Diver operated handwheel multiplier that inserts into the ISO receptacle for manual operation.
- Subsea gearbox for dedicated valve operation with ISO 13628-8 receptacle for ROV torque tool.
- Adjustable extensions to facilitate remote fixing of ISO receptacle.
- Remote ISO receptacle valve position indicators showing true actuator/gearbox position via local gearbox at the remote receptacle.
- Transition spool with end-of-stroke position stops, flushing facility, internal relief and stem cap protection.
- Double block & bleed control manifold.
- Position transducers and limit switch assemblies that allow fitting of subsea electrical connectors.
- Torque test equipment to confirm actuator and override performance.
- ISO 4406 Class 6 (NAS 6) flushing capabilities with fluid sampling device.
- Subsea & splashzone trims.



Position transducer assembly with electrical instrumentation connector.



Pressure compensation system.



Stainless steel drive extensions for remote location of ISO 13628-8 rotary torque tool receptacle.



Actuator declutch system.



Actuator trimmed for subsea & splashzone.

Manual Override Options

ISO 13628 is the standard for design and operation of subsea production systems. Class 1-4 is dependent upon the torque required to operate the actuator – the larger the actuator the larger ROV bucket required.

Rotork has a manual override tool suitable for diver use on smaller size actuators and gearboxes. It's designed to mate with an ISO 13628/API 17D receptacle.



Diver Operated Handwheel



Hand Operated Gearbox



Gearbox with ISO 13628/API 17D ROV torque tool receptacle

Exclusive Features

- Gearbox will back drive the whole assembly.
- Actuator can be removed for maintenance or repair.
- Valve end stops contained within the spool piece.

Benefits

- Full operation of the valve at all times.
- Financial savings (lifting vessels, divers and logistics).

Quality Assurance and Testing

Rotork Fluid Systems has engineered custom test systems to ensure proper operation and functionality of our products as well as assist in our research and product development efforts. Our subsea actuators have successfully completed ST-028 hyperbaric testing at simulated operating depths of 2,400 metres.

Approvals and Testing

- API 17D & 6A PR2 certified.
- ROV gearbox life tests.
- Hyperbaric tests in accordance with API 17D-307.3, API 17D-908.2c(4).
- Load test in accordance with API 17D-307.5.
- Spring balance testing.
- Hydrostatic test in accordance with API 17D:307.
- Hydrostatic pressure cycle test in accordance with API 17D-307.4 (Tbl 307.1).
- Life-cycle test in accordance with API 17D-307.
- Actuator seal test in accordance with API 6A-PR2-F2.5.1(a).
- Minimum and maximum temperature test (PR2-F2.5.1-(c) (d), Table F2.2).
- Temperature cycling test (PR2-F2.5.1-(e), Table F2.2 and F1.12.3 (e) to (q)).



Engineering expertise in subsea actuation technology

Subsea valve applications, which usually involve vital failsafe and associated safety related duties, represent an area of technology demanding the very highest levels of quality and product integrity to ensure reliable long-term performance. Rotork's engineering group works closely with contractor and end-user engineers to meet specific project requirements. In this task, the company can also draw upon the experience of an installed base of designs encompassing pressure compensated rack and pinion, scotch-yoke and linear actuators for both double-acting and spring-return duties, equipped with ROV and/or diver operated facilities.

Material selection and certification of key components or assemblies is important when providing a subsea actuation solution. We have extensive experience providing stainless steel hydraulic cylinder assemblies, stainless steel torque tool

drive extensions, inconel overlays or inserts for the override drive and indicator drive on seawater exposed areas and, stainless steel position transducer assemblies with electrical connectors.

Part of the Rotork subsea solution for ROV operated overrides includes the ability to provide adjustable extensions between the ISO torque tool receptacle (bucket) and override input/drive shaft located on the actuator. This allows the receptacle to be positioned remote from the actuator to facilitate easier ROV or diver access with the tool.

Furthermore, Rotork has two important unique capabilities, its declutchable mounting option for retrievable applications and a simple yet sophisticated system for monitoring of valve and actuator performance that includes partial stroke testing.

rotork Fluid Systems

GD01075

Table A1
ACTUATORS PERFORMANCE TABLE BY HYDRAULIC CONTROL IN NM @ 1500 Barg

ITEM DISPLACEMENT IN VALVE RECEIPTS	VALVE TAG	ACTUATOR MODEL	Valve RTD		Valve ETO		Valve BTC		Valve RTC		Valve MAST	
			Act. BTO	Act. RTO	Act. ETO	Act. BTC	Act. RTC	Act. ETC	Act. BTO	Act. RTO	Act. ETC	MAST
883	OSH-883-260FC2		2,772	1,130	1,230	1,230	1,130	1,270	1,130	1,270	1,130	16,827
11			4,800	2,000	2,180	2,180	2,000	2,200	2,000	2,200	2,000	16,827
184	OSH-184-260FC3		10,869	5,724	2,180	2,180	2,000	2,200	2,000	2,200	2,000	16,827
12			2,44	3,131	4,28	4,28	4,28	4,28	4,28	4,28	4,28	16,827
8.2	OSH-208-120FC2		34,736	18,876	5,190	5,190	4,750	4,750	4,750	4,750	4,750	16,827
14" #1500			2,20	4,271	6,00	6,00	3,80	3,80	3,80	3,80	3,80	16,827

Table A2
ACTUATORS PERFORMANCE TABLE BY ROV CONTROL IN NM @ MIN. ROV INPUT TORQUE (see Table A1)

ITEM DISPLACEMENT IN VALVE RECEIPTS	VALVE TAG	ACTUATOR MODEL	Valve RTD		Valve ETO		Valve BTC		Valve RTC		Valve MAST	
			Act. BTO	Act. RTO	Act. ETO	Act. BTC	Act. RTC	Act. ETC	Act. BTO	Act. RTO	Act. ETC	MAST
883	OSH-883-260FC2		2,772	1,130	1,230	1,230	1,130	1,270	1,130	1,270	1,130	16,827
11			4,800	2,000	2,180	2,180	2,000	2,200	2,000	2,200	2,000	16,827
184	OSH-184-260FC3		10,869	5,724	2,180	2,180	2,000	2,200	2,000	2,200	2,000	16,827
12			2,44	3,131	4,28	4,28	4,28	4,28	4,28	4,28	4,28	16,827
8.2	OSH-208-120FC2		34,736	18,876	5,190	5,190	4,750	4,750	4,750	4,750	4,750	16,827
14" #1500			2,20	4,271	6,00	6,00	3,80	3,80	3,80	3,80	3,80	16,827

Table A3
ROV Interface ISO-13028-4 CL 4 - OUTPUT DATA

ACTUATOR MODEL	MIN. ROV INPUT TORQUE	MAX. ROV INPUT TORQUE	No. Of Turn for Stroke
OSH-883-260FC2	710	370	80
OSH-184-260FC3	434	370	80
OSH-208-120FC2	891	370	80

Table A4
CYLINDERS / SPRINGS CHARACTERISTICS

ACTUATOR MODEL	CYLINDER DIAMETER	SPRING	START THRUST	ENDING THRUST
OSH-883-260FC2	80	44,788	25,536	22,637
OSH-184-260FC3	80	44,788	25,536	22,637
OSH-208-120FC2	130	74,489	44,532	44,532

Summary Table

Ambient temp	-20° C / +60° C	I.P. rating	
Electric power supply	TBA		
Hazardous area	TBA		
Electric connections	TBA		
Supply medium	HYDRAULIC	Pressure	Norm.
Supply pressure (Barg)	Min 130 Barg		
Orientation	Line HORIZONTAL	Valve stem	
Coating specification	NORSOK 7		
Back up reservoir	Code N/A	Charging	

Notes:
 MAST: Max Allowable Stem Torque
 MAST: Max Actuator Output Torque (at 207 Barg)
 The performance table shows the minimum guaranteed actuator output torque
 Note: The ROV input torque can vary within the range of 10%. The exact values will be communicated after the actuators have been tested.

Unique Capabilities

Mounting Declutch System

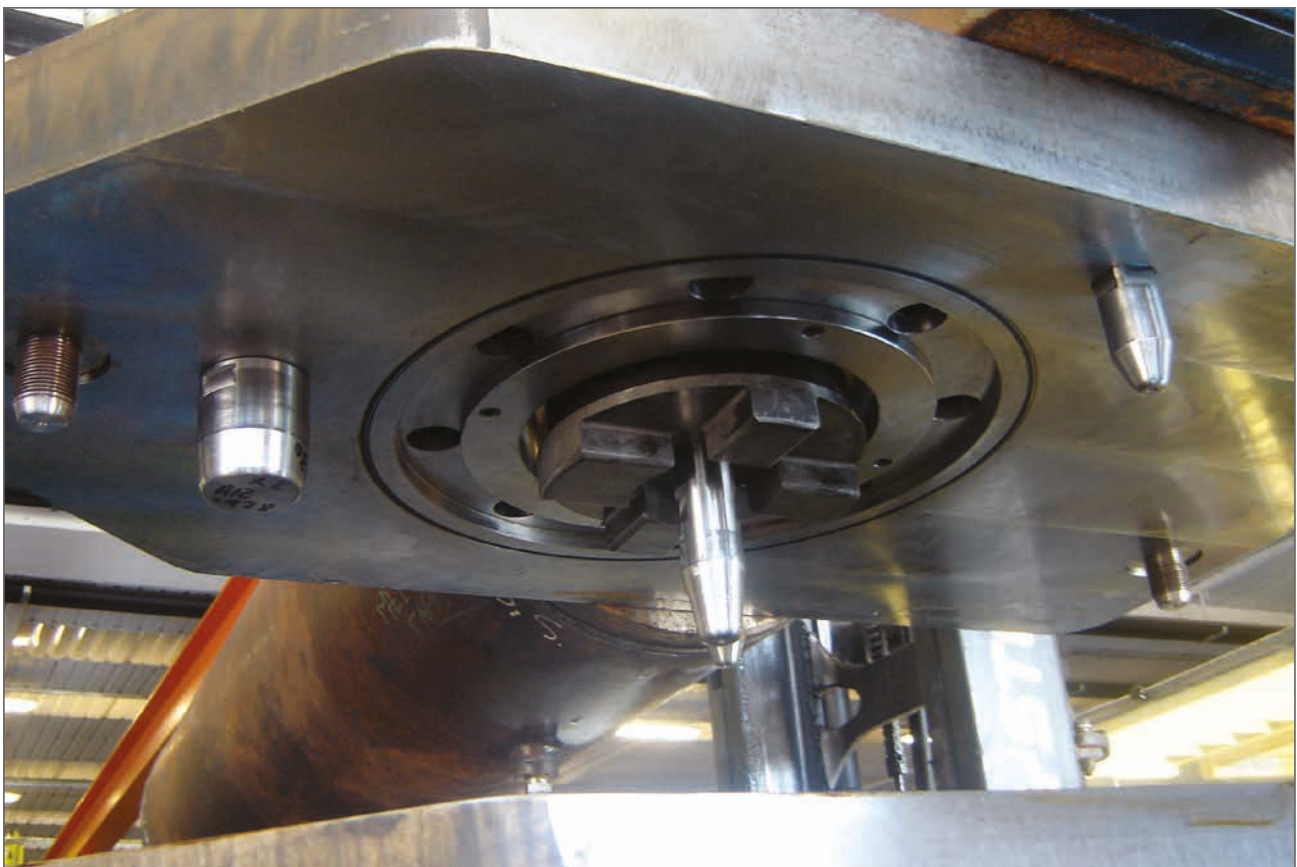
On retrievable applications such as some SSIV duties, one design option provides for interchangeability between the actuator and a ROV operated gearbox by means of transition spools and quick release methods. For total valve control this design has been further developed to provide the ability to declutch the actuator and remove it completely without affecting the valve position, whilst maintaining full local valve control by means of the gearbox.

Rotork has developed this declutch actuator system to provide complete flexibility for the operator. It has been specified for deep water applications including SSIV and other critical valve duties, including projects where the valve has been deployed separately from the actuator and when one actuator is required to operate more than a single valve installation.

In addition to the above, the functional and safety advantages of the declutch actuator include the following: simplification of actuator removal with associated cost economies, the ability to fully stroke the actuator independently of the valve or commission the actuator without operating the valve, partial stroke testing without risking valve closure, and ability to operate the valve in the event of a hydraulic power failure.

How does it work?

The automatic clutch system consists of two coupling joints with a dog-tooth mechanism, one assembled on the actuator and the other on the spool piece. When the coupling joint is engaged, the actuator can cycle the valve. When disengaged, the actuator can be stroked freely without cycling the valve. When the actuator is commissioned, the clutch is lowered into place. The actuator is fully stroked and automatically finds the correct position to engage with the valve. The valve can be operated by the ROV override on the spool piece if the actuator is removed or remains installed but disconnected from its remote power source.



De-clutch system and alignment pins.

rotork®



www.rotork.com

A full listing of our worldwide sales and service network is available on our website.

Rotork plc
Brassmill Lane, Bath, UK
tel +44 (0)1225 733200
email mail@rotork.com

PUB022-001-00
Issue 03/22

As part of a process of on-going product development, Rotork reserves the right to amend and change specifications without prior notice. Published data may be subject to change. For the very latest version release, visit our website at www.rotork.com

The name Rotork is a registered trademark. Rotork recognises all registered trademarks. Published and produced in the UK by Rotork. POLJB0322