

CHECK VALVE zCHE



Body material	Nominal pressure	Nominal diameter	Max. temperature
A Grey cast iron	C 16 bar	DN 15-300	300°C
C Nodular cast iron	C 16 bar D 25 bar	DN 15-200 DN 15-80	350°C
E Bronze	C 16 bar B 10 bar A 6 bar	DN 15-125 DN 150-200 DN 250-300	225°C
F Cast steel	E 40 bar	DN 15-250	450°C
I Cast stainless steel	E 40 bar	DN 15-250	400°C



correspond to the pressure equipment directive 2014/68/UE marking CE for DN≥32

FEATURES

- closing tightness class D acc. to EN -12266-1
- compact settlement
- environment-friendly
- no maintenance
- face-to-face dimension according to EN 558 series 8
- flanges drilled according to EN 1092-2 for type A,C
- flanges drilled according to EN 1092-3 for type E
- flanges drilled according to EN 1092-1 for type F, I

APPLICATION *

* not all of the applications are suitable for all of the executions
 On the website www.zetkama.com.pl is a Chemical Resistance List, which specifies the parameters of work for a given medium.

industries						
	INDUSTRY	SHIPBUILDING INDUSTRY	HEATING	REFRIGERATION AND AIR CONDITIONING	CHEMICAL INDUSTRY	
media						
	GLYCOL	INDUSTRIAL WATER	DIATHERMIC OIL	STEAM	COMPRESSED AIR	NEUTRAL FLUIDS

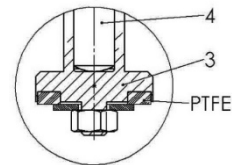
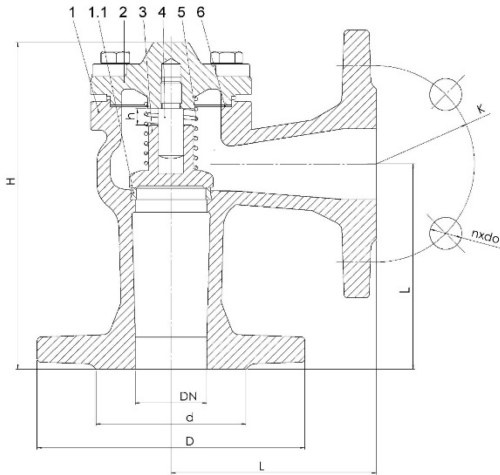
Data given can be changed without notice.

Edition 01/2021

FIG.288

MATERIALS, DIMENSIONS

Type 38*



*(max. temperature 200°C – on request)

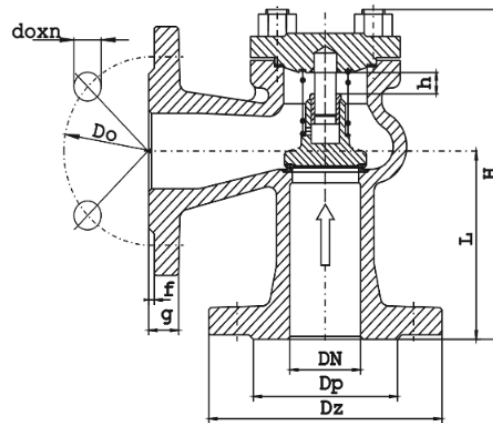
	Body material	A	C	A	C	E
	Type	31; 41		33; 43		32
1	Body	EN – GJL-250 5.1301 (ex. JL1040)	EN – GJS-400-18 5.1303 (ex. JS1025)	EN – GJL-250 5.1301 (ex. JL1040)	EN – GJS-400-18 5.1303 (ex. JS1025)	CuSn5Zn5Pb5-C
1.1	Seat ring	X12Cr13 1.4021		CuSn10		CuSn5Zn5Pb5-C
2	Cover	EN – GJL-250 5.1301 (ex. JL1040)	EN – GJS-400-18 5.1303 (ex. JS1025)	EN – GJL-250 5.1301 (ex. JL1040)	EN – GJS-400-18 5.1303 (ex. JS1025)	CuSn5Zn5Pb5-C
3	Disc	X12Cr13 1.4021		CuSn10		DN15-32 CuZn35Ni DN40-300 CuSn5Zn5Pb5-C
4	Stem	X12Cr13 1.4021		CuSn10		DN15-32 CuZn35Ni DN40-300 CuSn5Zn5Pb5-C
5	Spring	X17CrNi16-2 1.4057		CuSn6		-
6	Gasket	Graphite CrNi				FA1
Max. temperature		300°C	350°C	225°C		

Data given can be changed without notice.

Edition 01/2021

FIG.288

DN		15	20	25	32	40	50	65	80	100	125	150	200	250	300
L		90	95	100	105	115	125	145	155	175	200	225	275	325	375
PN16 EN – GJL-250 EN – GJS-400-18	D	95	105	115	140	150	165	185	200	220	250	285	340	405	460
	d	46	56	65	76	84	99	118	132	156	184	211	266	319	370
	K	65	75	85	100	110	125	145	160	180	210	240	295	355	410
	nxdo	4x14	4x14	4x14	4x19	4x19	4x19	4x19	8x19	8x19	8x19	8x23	12x23	12x28	12x28
PN25 EN – GJS-400-18	D	95	105	115	140	150	165	185	200	-	-	-	-	-	-
	d	46	56	65	76	84	99	118	132	-	-	-	-	-	-
	K	65	75	85	100	110	125	145	160	-	-	-	-	-	-
	nxdo	4x14	4x14	4x14	4x19	4x19	4x19	8x19	8x19	-	-	-	-	-	-
PN16, PN25 EN – GJL-250 EN – GJS-400-18	h	5	5	8	8	11	14	17	21	25	32	38	50	65	95
	H	140	142	157	165	185	198	224	237	292	329	363	452	535	635
PN 16/ PN 10 CuSn5Zn5Pb5-C	D	95	105	115	140	150	165	185	200	220	250	285	340	395	445
	d	46	56	65	76	84	99	118	132	156	184	211	266	319	370
	K	65	75	85	100	110	125	145	160	180	210	240	295	350	400
	nxdo	4x14	4x14	4x14	4x18	4x18	4x18	4x18	8x18	8x18	8x18	8x22	8x22	12x22	12x22
	h	6	7	8	10	12	15	19	24	28	36	40	56	65	80
	H	120	130	140	145	170	185	220	245	270	310	370	415	480	545
Kvs (m³/h) A, C		5,9	10,7	15,1	22,3	28	52	91,3	133	214	330	483	865	1295	2013
Weight (kg) A,C		2,6	2,7	3,8	5,5	7,4	9,5	12,8	20	29	41	66	111	196	302
Weight (kg) E		2,3	3,5	4,0	5,0	7,5	10	14	17	20	30	40	80	130	180



	Body material	F DN 15-250	I DN 15-250
	Type	31	31
1	Body	GP240GH	GX5CrNiMo9-11-2
2	Cover	P245GH DN 15-50 P265GH DN 65-250	X6CrNiTi18-10
3	Disc	X20CR13 DN 15-25 18-8 CrNi DN 32-250	X6CrNiTi18-10
6	Gasket	Graphite	
Max. temperature		450°C	400°C

Data given can be changed without notice.

Edition 01/2021

FIG.288

Body material	F, I												
	15	20	25	32	40	50	65	80	100	125	150	200	250
DN	15	20	25	32	40	50	65	80	100	125	150	200	250
Dz (mm)	95	105	115	140	150	165	185	200	235	270	300	375	450
Dp (mm)	45	58	68	78	88	102	122	138	162	188	218	280	345
Do (mm)	65	75	85	100	110	125	145	160	190	220	250	320	385
f (mm)	2	2	2	2	2	2	2	2	2	2	2	2	2
g (mm)	16	18	18	18	18	20	22	24	24	26	28	34	38
doxn	14X4	14X4	14X4	18X4	18X4	18X4	18X8	18X8	22X8	26X8	26X8	30x12	33x12
L (mm)	90	95	100	105	115	125	145	155	175	200	225	275	325
H (mm)	145	150	155	195	215	220	265	280	325	360	390	490	540
h (mm)	7	7	8	8	10	10	16	20	25	31	38	50	65
Weight (kg)	2,5	3,2	3,4	8,7	10,5	13,6	20,0	30,0	51,0	56,0	65,0	125,0	278,0

PRESSURE-TEMPERATURE RATINGS

Acc. EN 1092-2	PN			-10 ÷ 120°C	150°C	200°C	250°C	300°C	350°C			
EN – GJL-250	16	bar	-	-	16	14,4	12,8	11,2	9,6	-	-	-
EN – GJS-400 – 18-LT	16		-	-	16	15,5	14,7	13,9	12,8	11,2	-	-
EN – GJS-400 – 18-LT	25		-	-	25	24,3	23	21,8	20	17,5	-	-
Acc. EN 1092-1	PN		-29 ÷ -10°C	-10 ÷ 50°C	100°C	150°C	200°C	250°C	300°C	350°C	400°C	450°C
GP240GH	40	bar	30	40	37,1	35,2	33,3	30,4	27,6	25,7	23,8	13,1
Acc. EN 1092-1	PN		-60 ÷ -10°C	-10 ÷ 50°C	100°C	150°C	200°C	250°C	300°C	350°C	400°C	450°C
X6CrNiTi18-10/GX5CrNiMo19-11-2	40		40	40	40	36,3	33,7	31,8	29,7	28,5	27,4	-
Acc. EN 1092-3	PN				-10-120°C	150°C	180°C	200°C	225°C			
CuSn5Zn5Pb5-C	16	bar	-	-	16	10	10	10	10	-	-	-
	10		-	-	10	6	6	6	6	-	-	-
	6		-	-	6	4	4	4	4	-	-	-

Data given can be changed without notice.

Edition 01/2021

FLANGE DIMENSIONS ACC. PN-EN 1092-2 (A, C)

DN		15	20	25	32	40	50	65	80	100	125	150	200	250	300
PN6	D (mm)	80	90	100	120	130	140	160	190	210	240	265	320	375	440
	K (mm)	55	65	75	90	100	110	130	150	170	200	225	280	335	395
	nxd (mm)	4x11	4x11	4x11	4x14	4x14	4x14	4x14	4x19	4x19	8x19	8x19	8x19	12x19	12x23
PN16	D (mm)	95	105	115	140	150	165	185	200	220	250	285	340	405	460
	K (mm)	65	75	85	100	110	125	145	160	180	210	240	295	355	410
	nxd (mm)	4x14	4x14	4x14	4x19	4x19	4x19	4x19	8x19	8x19	8x19	8x23	12x23	12x28	12x28
PN25	D (mm)	95	105	115	140	150	165	185	200	-----	-----	-----	-----	-----	-----
	K (mm)	65	75	85	100	110	125	145	160	-----	-----	-----	-----	-----	-----
	nxd (mm)	4x14	4x14	4x14	4x19	4x19	4x19	8x19	8x19	-----	-----	-----	-----	-----	-----

FLANGE DIMENSIONS ACC. PN-EN 1092-3 (E)

DN		15	20	25	32	40	50	65	80	100	125	150	200	250	300
PN6	D (mm)	-----	-----	-----	-----	-----	-----	-----	-----	-----	-----	-----	-----	395	445
	K (mm)	-----	-----	-----	-----	-----	-----	-----	-----	-----	-----	-----	-----	350	400
	nxd (mm)	-----	-----	-----	-----	-----	-----	-----	-----	-----	-----	-----	-----	12x22	12x22
PN10	D (mm)	-----	-----	-----	-----	-----	-----	-----	-----	-----	-----	285	340	-----	-----
	K (mm)	-----	-----	-----	-----	-----	-----	-----	-----	-----	-----	240	295	-----	-----
	nxd (mm)	-----	-----	-----	-----	-----	-----	-----	-----	-----	-----	8x22	8x22	-----	-----
PN16	D (mm)	95	105	115	140	150	165	185	200	220	250	-----	-----	-----	-----
	K (mm)	65	75	85	100	110	125	145	160	180	210	-----	-----	-----	-----
	nxd (mm)	4x14	4x14	4x14	4x19	4x18	4x18	4x18	8x18	8x18	8x18	8x18	-----	-----	-----

FLANGE DIMENSIONS ACC. PN-EN 1092-1 (F, I)

DN		15	20	25	32	40	50	65	80	100	125	150	200	250
PN40	D (mm)	95	105	115	140	150	165	185	200	235	270	300	375	450
	K (mm)	65	75	85	100	110	125	145	160	190	220	250	320	385
	nxd (mm)	4x14	4x14	4x14	4x18	4x18	4x18	8x18	8x18	8x22	8x26	8x26	12x30	33x12

Data given can be changed without notice.

Edition 01/2021

TYPE

Figure	Body material	Nominal diameter	Nominal pressure	Type
288	A Grey cast iron EN-GJL-250	15-300 mm	C 16 bar	31 loose disc with spring; stem, disc and seat ring - stainless steel
		15-150 mm	C 16 bar	38 loose disc with spring; stem, disc and seat ring - stainless steel; disc gasket PTFE (120°C)
		15-300 mm	C 16 bar	41 loose disc without spring; stem, disc and seat ring - stainless steel
		15-300 mm	C 16 bar	33 loose disc with spring; stem, disc and seat ring - bronze
		15-300 mm	C 16 bar	43 loose disc without spring; stem, disc and seat ring - bronze
288	C Nodular cast iron EN-GJS-400-18-LT	15-200 mm	C 16 bar	31 loose disc with spring; stem, disc and seat ring - stainless steel
		15-150 mm	C 16 bar	38 loose disc with spring; stem, disc and seat ring - stainless steel; disc gasket PTFE (120°C)
		15-200 mm	C 16 bar	41 loose disc without spring; stem, disc and seat ring - stainless steel
		15-200 mm	C 16 bar	33 loose disc with spring; stem, disc and seat ring - bronze
		15-200 mm	C 16 bar	43 loose disc without spring; stem, disc and seat ring - bronze
		15-80 mm	D 25 bar	31 loose disc with spring; stem, disc and seat ring - stainless steel
		15-80 mm	D 25 bar	38 loose disc with spring; stem, disc and seat ring - stainless steel; disc gasket PTFE (120°C)
		15-80 mm	D 25 bar	41 loose disc without spring; stem, disc and seat ring - stainless steel
		15-80 mm	D 25 bar	33 loose disc with spring; stem, disc and seat ring - bronze
		15-80 mm	D 25 bar	43 loose disc without spring; stem, disc and seat ring - bronze
288	E Bronze CuZn5Zn5Pb5-C	15-125 mm	C 16 bar	32 loose disc with spring; stem- brass, disc and seat ring - bronze
		150-200 mm	B 10 bar	32 loose disc with spring; stem- brass, disc and seat ring - bronze
		250-300 mm	A 6 bar	32 loose disc with spring; stem- brass, disc and seat ring - bronze
288	F Cast steel GP240GH	15-250 mm	E 40 bar	31 loose disc with spring; stem, disc and seat ring - stainless steel
288	F Cast stainless steel GX5CrNiMo19-11-2	15-250 mm	E 40 bar	31 loose disc with spring; stem, disc and seat ring - stainless steel

Data given can be changed without notice.

Edition 01/2021

ORDERING

Figure	Body material	Nominal diameter	Nominal pressure	Type
288	A Grey cast iron EN-GJL-250	15-300 mm	C 16 bar	31 loose disc with spring; stem, disc and seat ring - stainless steel

Order example acc. index

288 A 050 C 31

Check valves, ends threaded, form angle
 Grey cast iron EN-GJL-250
 Nominal diameter (mm)
 Nominal pressure PN 16
 Loose disc with spring; stem, disc and seat ring - stainless steel

288 A 050 C 31