

Direct acting

Type PLG41 Pressure Reducing Valves

For gas

- For low pressure use of PPD41L-3 pressure reducing valve.
- A valve disc made of synthetic rubber ensures tight shut off when closed.
- Use PLG61-2 pressure reducing valve for large flow rate.



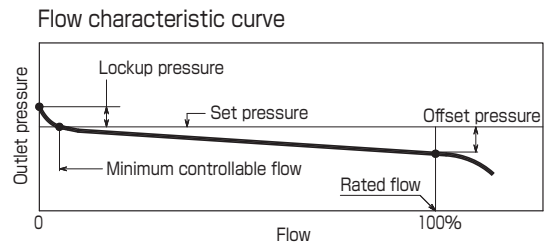
1 Pressure Reducing Valves (For gas)

Specifications

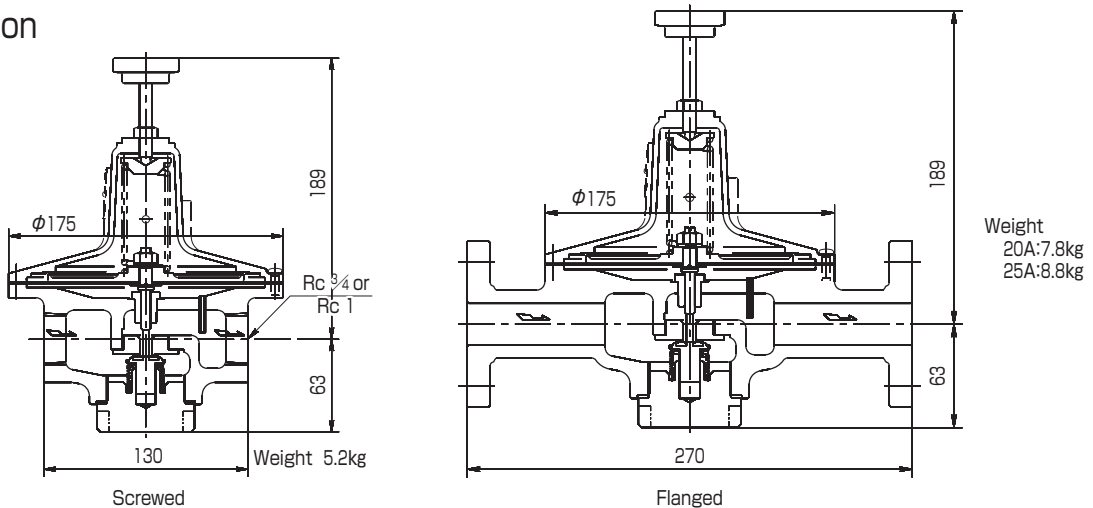
Fluid	S ize	Pressure (kPa)			Max. Temp. (°C)	Material for main parts					Connection
		Inlet	Outlet set range			Body	Bottom cover	Spring case	Valve disc	Diaphragm	
Air & non-corrosive gases	20 · 25	2.3 400	#1	0.3-1.0	0 80	Stainless cast steel	Stainless steel	Aluminium alloy casting	Stainless steel & synthetic rubber	Synthetic rubber	Screwed JIS Rc
			#2	0.8-5.0							
			#3	2.0-10							
			#4	6.0-20							
			#5	15-35							
										Flanged JIS10KFF	

Performance

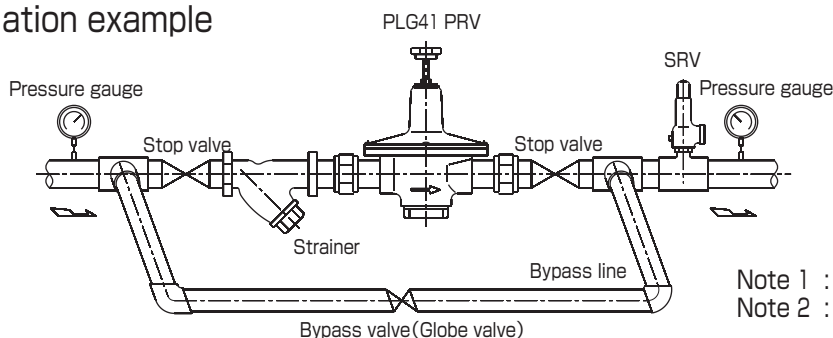
Min. differential pressure	2kPa	
Offset pressure	Approx. 15% of max. set pressure (min. 0.4kPa) or less	
Lockup Pressure	Approx. 0.4kPa	
Min. controllable flow (air)	Approx. 0.3m³/h (normal)	
Seat leakage	0.01% of rated flow or less	
Cv	1 (#1, 2) 1.3 (#3-5)	
Max. flow	Set press. lower than 5kPa	20m³/h (normal)
	Set press. 5kPa and above	30m³/h (normal)



Construction



Installation example



Note 1 : Install upright in horizontal piping.
 Note 2 : The outlet straight pipe line needs 1m or more apart from the valve.