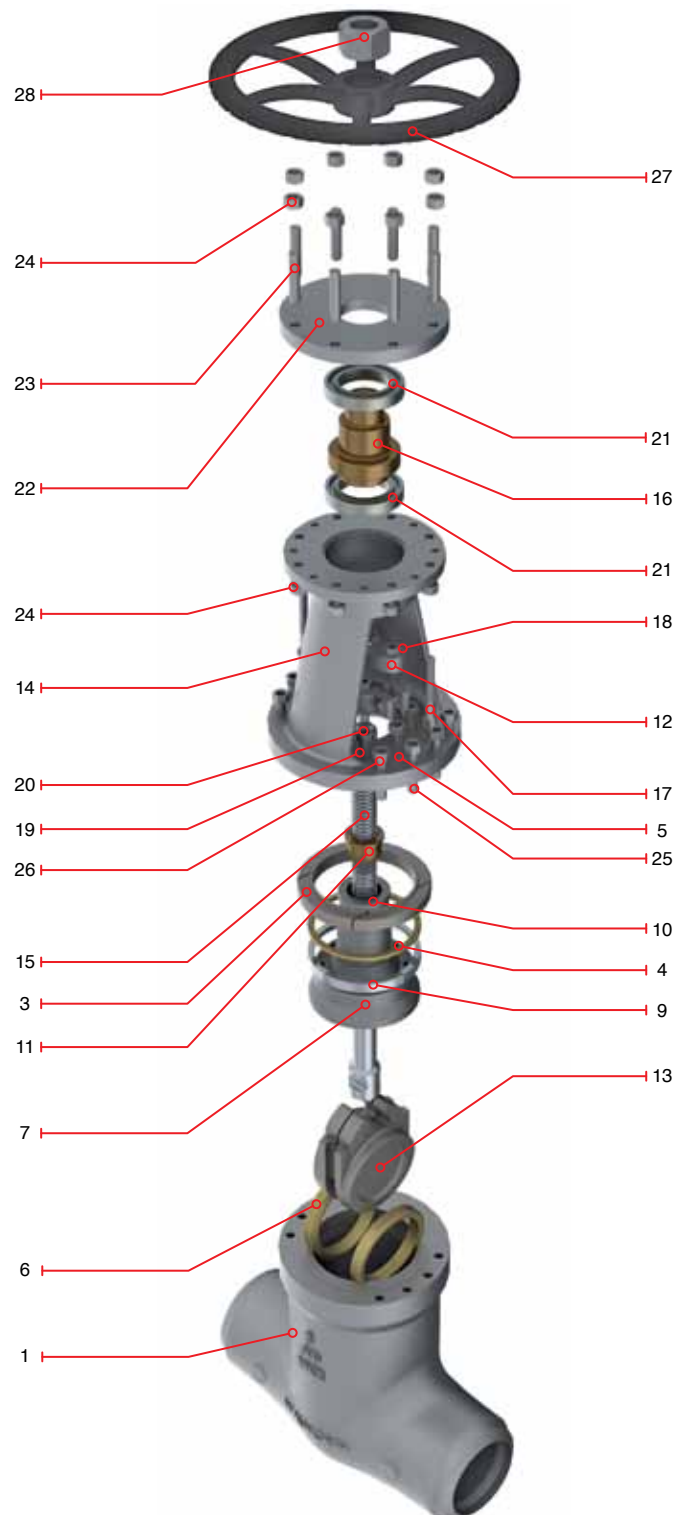


WALWORTH PRESSURE SEAL GATE VALVES

Following table shows the most common bill of materials for a pressure seal gate valve. There are many other combinations of base material and trim, please refer to other sections of this catalog for additional information or contact to the Plant for more options.

Regular Bill of Materials

No.	Description	Carbon steel
1	Body	ASTM A216 GR. WCB
2	Body inlay	SS-309 (not shown)
3	Thrust ring	AISI 4140
4	Spacer ring	AISI 4140
5	Bonnet retainer	ASTM A515 GR. 70
6	Seat rings	ASTM A515 GR. 70 & Co-Cr-W overlay
7	Bonnet	ASTM A216 GR. WCB or ASTM A105
8	Bonnet Back seat	Integral (not shown)
9	Gasket	Mild steel (100 HB) silver plated
10	Packing	Flexible graphite intermediate rings / anti extrusion rings on top and bottom side of the packing chamber.
11	Gland Bushing	ASTM A276 GR. 410
12	Gland Flange	ASTM A216 GR. WCB
13	Wedge	ASTM A216 GR.WCB & Co-Cr-W OVERLAY
14	Yoke	ASTM A216 GR. WCB
15	Stem	ASTM A182 GR. F6A CL2
16	Stem nut	ASTM B148 C95600
17	Gland flange studs	ASTM A193 GR. B7
18	Gland flange nuts	ASTM A194 GR. 2H
19	Bonnet studs	ASTM A193 GR. B7
20	Stud nuts	ASTM A194 GR. 2H
21	Bearings	Commercial
22	Bearing cover	ASTM A-515 GR. 70
23	Bearing cover studs	ASTM A193 GR. B7
24	Bearing cover stud nuts	ASTM A194 GR. 2H
25	Yoke bolt	ASTM A193 GR. B7
26	Yoke bolt nuts	ASTM A194 GR. 2H
27	Handwheel or gear operator	Commercial
28	Handwheel nut	ASTM A515 GR. 70



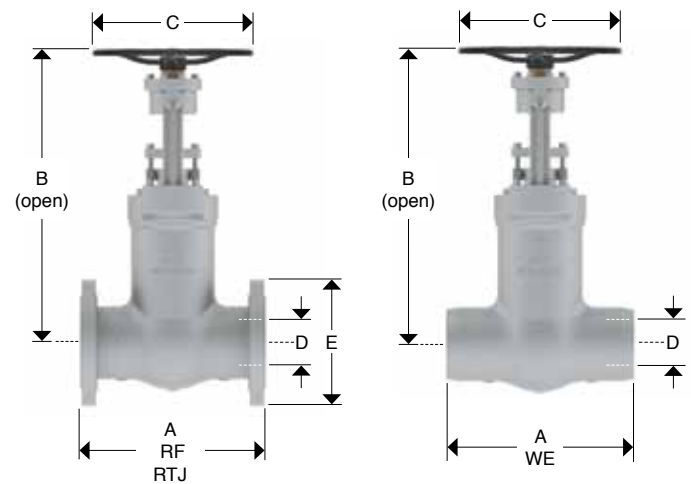
WALWORTH PRESSURE SEAL GATE VALVES CLASS 600 (HANDWHEEL OPERATED)



Design Features

- Design in accordance with ASME B16.34
- WE short pattern; RF & RTJ long pattern as per ASME B16.10
- Outside Screw & Yoke (OS&Y)
- Flexible wedge
- Option with Parallel Slide disc available upon request
- From 2" to 16" handwheel operated
- End to end dimensions as per ASME B16.10
- Flange dimensions as per ASME B16.5
- Weld end dimensions as per ASME B16.25

Catalog figure No.	ID plant figure No.	Type of ends
5232PSWE	5232PSWE	Buttweld
5232PSRF	5232PSF	Flanged raised face
5232PSRTJ	5232PSRJ	Flanged ring type joint



Dimensions and Weights

Nominal diameter		in	2	2.5	3	4	6	8	10	12	14	16
		mm	51	63	76	102	152	203	254	305	356	406
A	End to end WE	in	7	8.5	10	12	18	23	28	32	35	39
		mm	178	216	254	305	457	584	711	813	889	991
A	Face to face RF	in	11.5	13	14	17	22	26	31	33	35	39
		mm	292	330	356	432	559	660	787	838	889	991
A	Face to face RTJ	in	11.62	13.12	14.12	17.12	22.12	26.12	31.12	33.12	35.12	39.12
		mm	295	333	359	435	562	663	790	841	892	994
B	Center to top (open)	in	24	24	24	28	35	46	51	58	64	73
		mm	610	610	610	711	889	1168	1295	1473	1626	1854
C	Handwheel	in	10	10	10	14	14	20	24	30	30	34
		mm	254	254	254	356	356	508	610	762	762	864
WE	Weight	lbs	66	72.6	77	145.2	294.8	534.6	904.2	1449.8	2118.6	2728
		Kg	30	33	35	66	134	243	411	659	963	1240
RF or RTJ	Weight	lbs	83.6	99	110	220	455.4	763.4	1258.4	1878.8	2635.6	3458.4
		Kg	38	45	50	100	207	347	572	854	1198	1572
Cv	Flow coefficient		280	351	612	1188	2457	4325	6726	9902	11978	15864

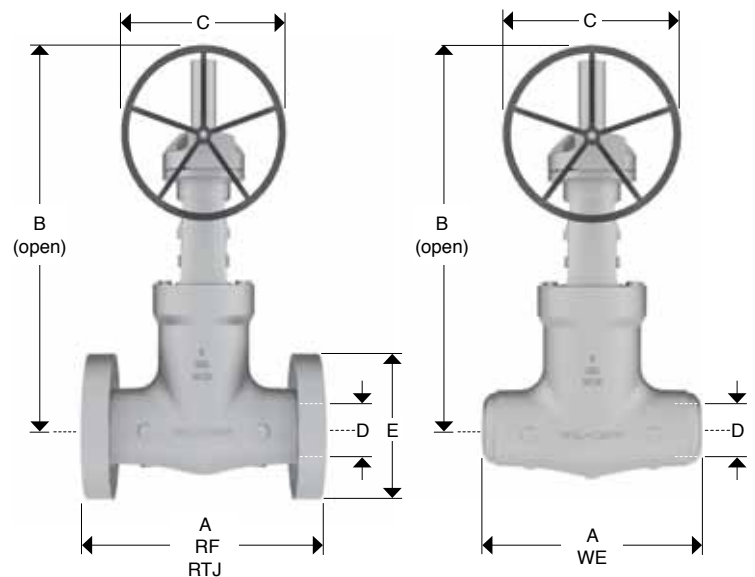
WALWORTH PRESSURE SEAL GATE VALVES CLASS 600 (GEAR OPERATED)



Design Features

- Design in accordance with ASME B16.34
- WE short pattern; RF & RTJ long pattern as per ASME B16.10
- Outside Screw & Yoke (OS&Y)
- Flexible wedge
- Option with Parallel Slide disc available upon request
- From 18" and up Gear operated
- End to end dimensions as per ASME B16.10
- Flange dimensions as per ASME B16.5
- Weld end dimensions as per ASME B16.25

Catalog figure No.	ID plant figure No.	Type of ends
5232PSWE	5232PSWE	Buttweld
5232PSRF	5232PSF	Flanged raised face
5232PSRTJ	5232PSRJ	Flanged ring type joint



Dimensions and Weights

Nominal diameter		in	18	20	24
		mm	457	508	607
A	End to end WE	in	43	47	55
		mm	1092	1194	1397
A	Face to face RF	in	43	47	55
		mm	1092	1194	1397
A	Face to face RTJ	in	43.12	47.25	55.38
		mm	1095	1200	1407
B	Center to top (open)	in	80	90	98
		mm	2032	2286	2489
C	Handwheel	in	34	34	38
		mm	864	864	965
WE	Weight	lbs	3197	4475	5425
		Kg	1453	2034	2466
RF or RTJ	Weight	lbs	4147	5698	7174
		Kg	1885	2590	3261
Cv	Flow coefficient		20013	24663	36324

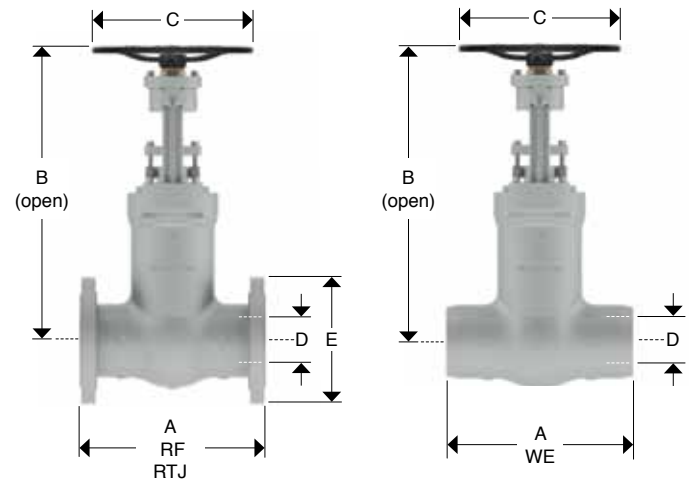
WALWORTH PRESSURE SEAL GATE VALVES CLASS 900 (HANDWHEEL OPERATED)



Design Features

- Design in accordance with ASME B16.34
- WE short pattern; RF & RTJ long pattern as per ASME B16.10
- Outside Screw & Yoke (OS&Y)
- Flexible wedge
- Option with Parallel Slide disc available upon request
- From 2" to 14" handwheel operated
- End to end dimensions as per ASME B16.10
- Flange dimensions as per ASME B16.5
- Weld end dimensions as per ASME B16.25

Catalog figure No.	ID plant figure No.	Type of ends
5247PSWE	5247PSWE	Buttweld
5247PSRF	5247PSF	Flanged raised face
5247PSRTJ	5247PSRJ	Flanged ring type joint



Dimensions and Weights

Nominal diameter		in	2	2.5	3	4	6	8	10	12	14
		mm	51	63	76	102	152	203	254	305	356
A	End to end WE	in	8.5	10	12	14	20	26	31	36	39
		mm	216	254	305	356	508	660	787	914	991
A	Face to face RF	in	14.5	16.5	15	18	24	29	33	38	40.5
		mm	368	419	381	457	610	737	838	965	1029
A	Face to face RTJ	in	14.62	16.62	15.12	18.12	24.12	29.12	33.12	38.12	40.88
		mm	371	422	384	460	613	740	841	968	1038
B	Center to top (open)	in	23	24	24	29	38	52	56	63	70
		mm	584	610	610	737	965	1321	1422	1600	1778
C	Handwheel	in	10	10	14	18	18	20	24	30	30
		mm	254	254	356	457	457	508	610	762	762
WE	Weight	lbs	75	97	106	176	521	880	1269	1890	2629
		Kg	34	44	48	80	237	400	577	859	1195
RF or RTJ	Weight	lbs	119	158	178	282	741	1223	1758	2541	3428
		Kg	54	72	81	128	337	556	799	1155	1558
Cv	Flow coefficient		233	338	457	844	1899	3283	5204	7400	9015

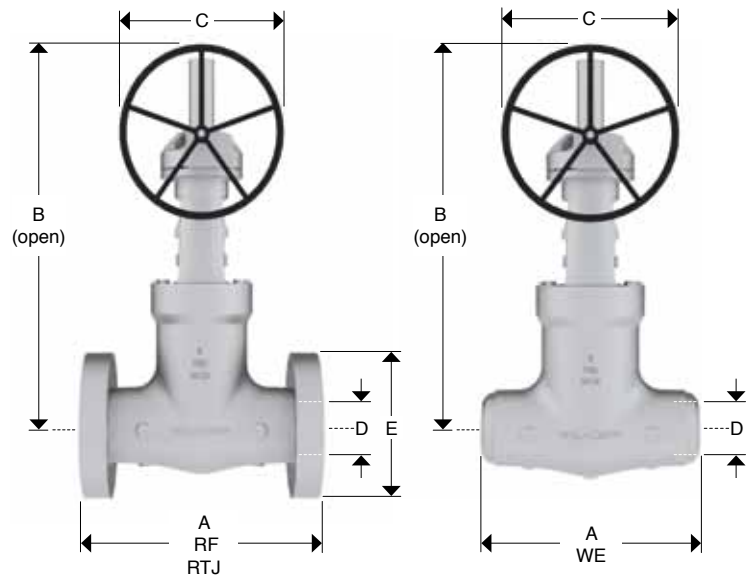
WALWORTH PRESSURE SEAL GATE VALVES CLASS 900 (GEAR OPERATED)



Design Features

- Design in accordance with ASME B16.34
- WE short pattern; RF & RTJ long pattern as per ASME B16.10
- Outside Screw & Yoke (OS&Y)
- Flexible wedge
- Option with Parallel Slide disc available upon request
- From 16" and up Gear operated
- End to end dimensions as per ASME B16.10
- Flange dimensions as per ASME B16.5
- Weld end dimensions as per ASME B16.25

Catalog figure No.	ID plant figure No.	Type of ends
5247PSWE	5247PSWE	Buttweld
5247PSRF	5247PSF	Flanged raised face
5247PSRTJ	5247PSRJ	Flanged ring type joint



Dimensions and Weights

Nominal diameter		in	16	18	20	24
		mm	406	457	508	607
A	End to end WE	in	43	48	52	61
		mm	1092	1219	1321	1549
A	Face to face RF	in	44.5	48	52	61
		mm	1130	1219	1321	1549
A	Face to face RTJ	in	44.88	48.5	52.5	61.75
		mm	1140	1232	1334	1568
B	Center to top (open)	in	78	85	94	105
		mm	1981	2159	2388	2667
C	Handwheel	in	30	30	30	38
		mm	762	762	762	965
WE	Weight	lbs	3247	3982	5874	7916
		Kg	1476	1810	2670	3598
RF or RTJ	Weight	lbs	4165	5273	7456	10872
		Kg	1893	2397	3389	4942
Cv	Flow coefficient		11864	15116	18774	27311

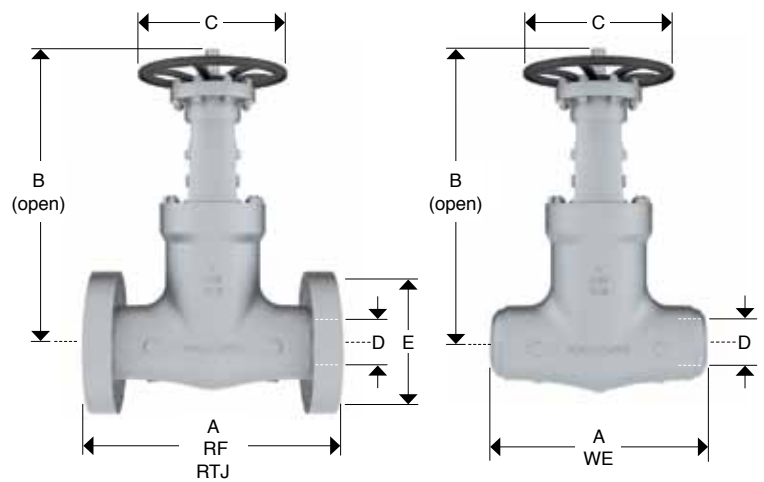
WALWORTH PRESSURE SEAL GATE VALVES CLASS 1500 (HANDWHEEL OPERATED)



Design Features

- Design in accordance with ASME B16.34
- WE short pattern; RF & RTJ long pattern as per ASME B16.10
- Outside Screw & Yoke (OS&Y)
- Flexible wedge
- Option with Parallel Slide disc available upon request
- From 2" to 12" handwheel operated
- End to end dimensions as per ASME B16.10
- Flange dimensions as per ASME B16.5
- Weld end dimensions as per ASME B16.25.

Catalog figure No.	ID plant figure No.	Type of ends
5262PSWE	5262PSWE	Buttweld
5262PSRF	5262PSF	Flanged raised face
5262PSRTJ	5262PSRJ	Flanged ring type joint



Dimensions and Weights

Nominal diameter		in	2	2.5	3	4	6	8	10	12
		mm	51	63	76	102	152	203	254	305
A	End to end WE	in	8.5	10	12	16	22	28	34	39
		mm	216	254	305	406	559	711	864	991
A	Face to face RF	in	14.5	16.5	18.5	21.5	27.75	32.75	39	44.5
		mm	368	419	470	546	705	832	991	1130
A	Face to face RTJ	in	14.62	16.62	18.62	21.62	28	33.13	39.38	45.12
		mm	371	422	473	549	711	842	1000	1146
B	Center to top (open)	in	23	24	24	29	39	53.5	58	65.5
		mm	584	610	610	737	991	1359	1473	1664
C	Handwheel	in	10	10	14	18	18	20	30	30
		mm	254	254	356	457	457	508	762	762
WE	Weight	lbs	141	152	152	262	750	1250	2378	3648
		Kg	64	69	69	119	341	568	1081	1658
RF or RTJ	Weight	lbs	191	224	249	407	1080	1769	3249	4981
		Kg	87	102	113	185	491	804	1477	2264
Cv	Flow coefficient		233	338	405	754	1620	2843	4509	6410

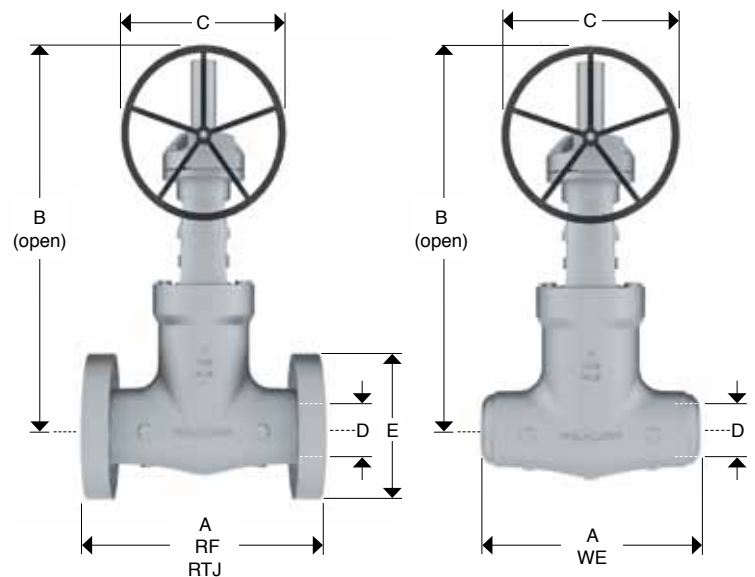
WALWORTH PRESSURE SEAL GATE VALVES CLASS 1500 (GEAR OPERATED)



Design Features

- Design in accordance with ASME B16.34
- WE short pattern; RF & RTJ long pattern as per ASME B16.10
- Outside Screw & Yoke (OS&Y)
- Flexible wedge
- Option with Parallel Slide disc available upon request
- From 14" and up Gear operated
- End to end dimensions as per ASME B16.10
- Flange dimensions as per ASME B16.5
- Weld end dimensions as per ASME B16.25

Catalog figure No.	ID plant figure No.	Type of ends
5262PSWE	5262PSWE	Buttweld
5262PSRF	5262PSF	Flanged raised face
5262PSRTJ	5262PSRJ	Flanged ring type joint



Dimensions and Weights

Nominal diameter		in	14	16	18	20	24
		mm	356	406	457	508	607
A	End to end WE	in	42	47	53	58	76.5
		mm	1067	1194	1346	1473	1943
A	Face to face RF	in	49.5	54.5	60.5	65.5	76.5
		mm	1257	1384	1537	1664	1943
A	Face to face RTJ	in	50.25	55.38	61.38	66.38	77.62
		mm	1276	1407	1559	1686	1972
B	Center to top (open)	in	73	80	87	95	105.5
		mm	1854	2032	2210	2413	2680
C	Handwheel	in	30	30	30	30	38
		mm	762	762	762	762	965
WE	Weight	lbs	4974	7267	8791	10573	13484
		Kg	2261	3303	3996	4806	6129
RF or RTJ	Weight	lbs	6853	9764	12038	14667	19127
		Kg	3115	4438	5472	6667	8694
Cv	Flow coefficient		7746	10186	12988	17016	23744

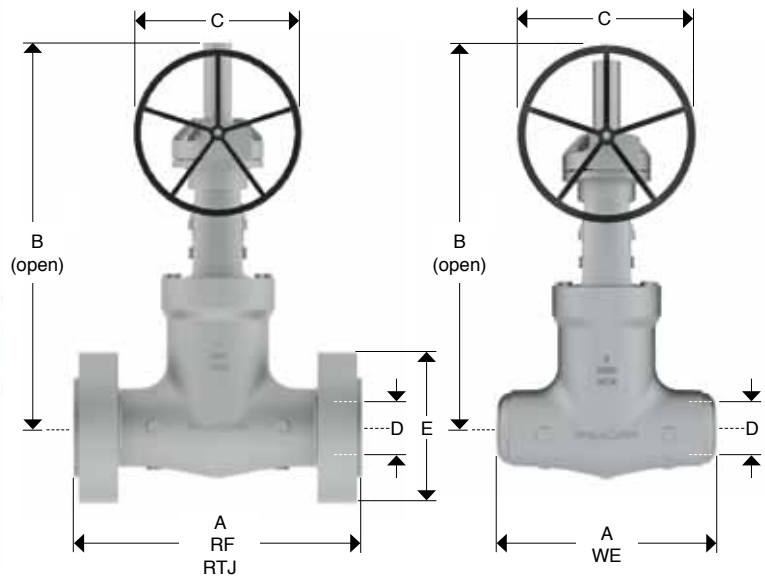
WALWORTH PRESSURE SEAL GATE VALVES CLASS 2500 (GEAR OPERATED)

Design Features

- Design in accordance with ASME B16.34.
- WE short pattern; RF & RTJ long pattern as per ASME B16.10.
- Outside Screw & Yoke (OS&Y).
- Flexible wedge.
- Option with Parallel Slide disc available upon request.
- From 2" and up Gear operated.
- End to end dimensions as per ASME B16.10.
- Flange dimensions as per ASME B16.5.
- Weld end dimensions as per ASME B16.25.



Catalog figure No.	ID plant figure No.	Type of ends
5560PSWE	5560PSWE	Buttweld
5560PSRF	5560PSF	Flanged raised face
5560PSRTJ	5560PSRJ	Flanged ring type joint



Dimensions and Weights

D Nominal diameter		in	2	2.5	3	4	6	8	10	12	14	16	18	20	24
		mm	51	63	76	102	152	203	254	305	356	406	457	508	607
A	End to end WE	in	11	13	14.5	18	24	30	36	41	44	49	55	62	66
		mm	279	330	368	457	610	762	914	1041	1118	1245	1397	1575	1676
A	Face to face RF	in	17.75	20	22.75	26.5	36	40.25	50	56	PCR	PCR	PCR	PCR	PCR
		mm	451	508	578	673	914	1022	1270	1422	PCR	PCR	PCR	PCR	PCR
A	Face to face RTJ	in	17.87	20.25	23	26.88	36.5	40.75	50.88	56.88	PCR	PCR	PCR	PCR	PCR
		mm	454	514	584	683	927	1035	1292	1445	PCR	PCR	PCR	PCR	PCR
B	Center to top	in	26	26	26	31	39	53	60	66	75	85	95	105	115
		mm	660	660	660	787	991	1346	1524	1676	1905	2159	2413	2667	2921
C	Handwheel	in	20	30	30	30	30	38	38	38	38	38	38	38	38
		mm	508	762	762	762	762	965	965	965	965	965	965	965	965
WE	Weight	lbs	196	396	396	484	836	1232	2090	3124	5610	6380	7788	9275	12254
		Kg	89	180	180	220	380	560	950	1420	2550	2900	3540	4216	5570
RF or RTJ	Weight	lbs	273	506	561	737	1257	1877	3058	4972	8206	PCR	PCR	PCR	PCR
		Kg	124	230	255	335	571	853	1390	2260	3730	PCR	PCR	PCR	PCR
Cv	Flow coefficient		810	1602	2700	3825	4824	6552	8114	10800	16119	14500	16600	11200	16400

PCR = Per customer request.