

Yuandong

奉化市远东车辆部件有限公司

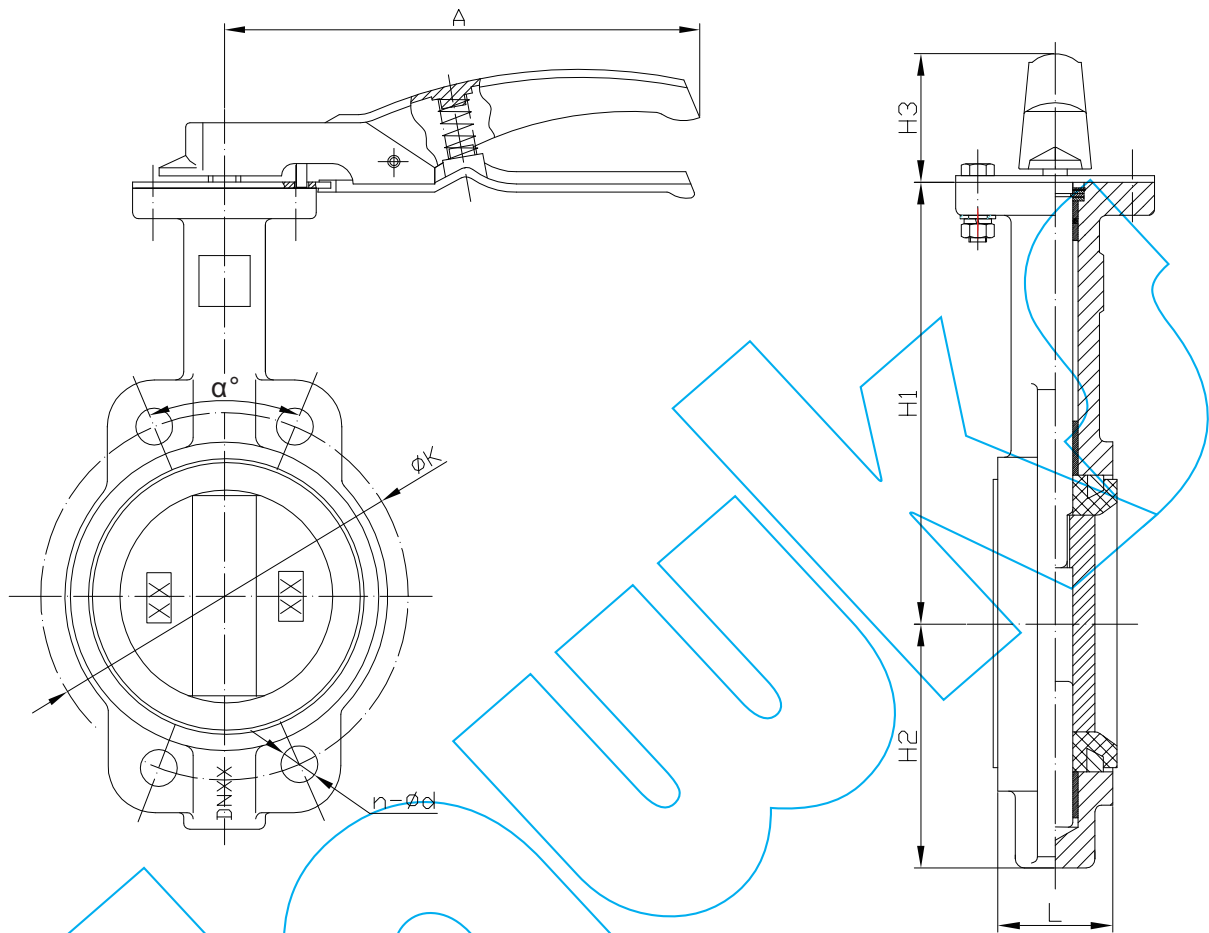
Fenghua Yuandong Auto Parts Limited Company

Hawks

奉化市哈克斯自动化设备有限公司

Fenghua Hawks Automatic Equipment Limited Company

WAFER BUTTERFLY VALVE

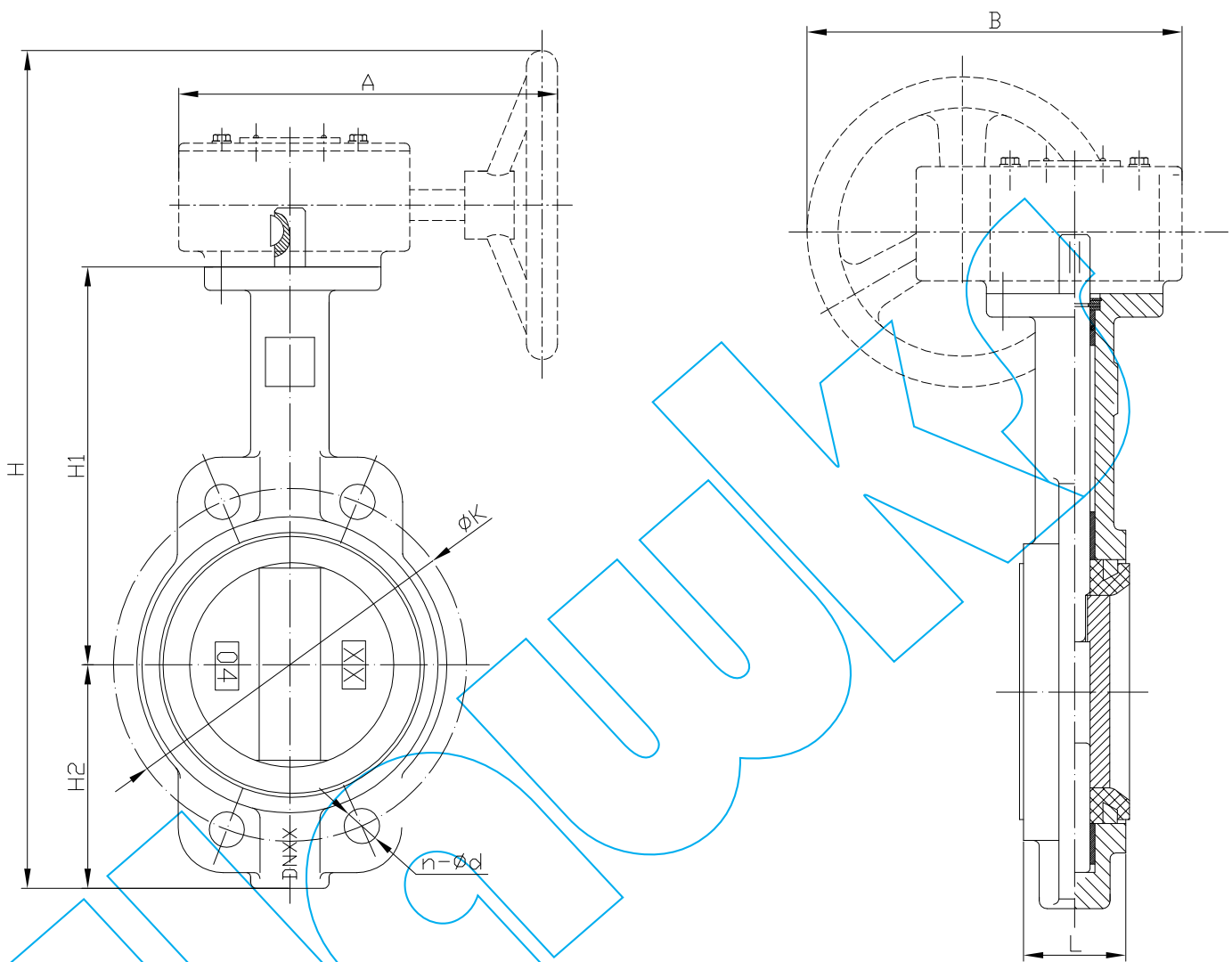


parameter Size	A	φK	n-φd	α	H1	H2	H3	L
DN40	180	110	4-φ19	45°	140	66	47	33±2
DN50	180	125	4-φ19	45°	162	76	47	43±2
DN65	180	145	4-φ19	45°	175	89	47	46±2
DN80	180	160	8-φ19	22.5°	181	94	47	46±2
DN100	233	180	8-φ19	22.5°	200	114	58	52±2
DN125	233	210	8-φ19	22.5°	213	127	58	56±2
DN150	233	241	8-φ23	22.5°	225	140	58	56±2

Technical requirements:

1. Manufacture and inspection are according to GB/T 12238
2. Face to face is according to EN558. 1: 1995 series 20
3. Flange connection is according to EN1092-2
4. The driving device is connected with ISO5211 standard size

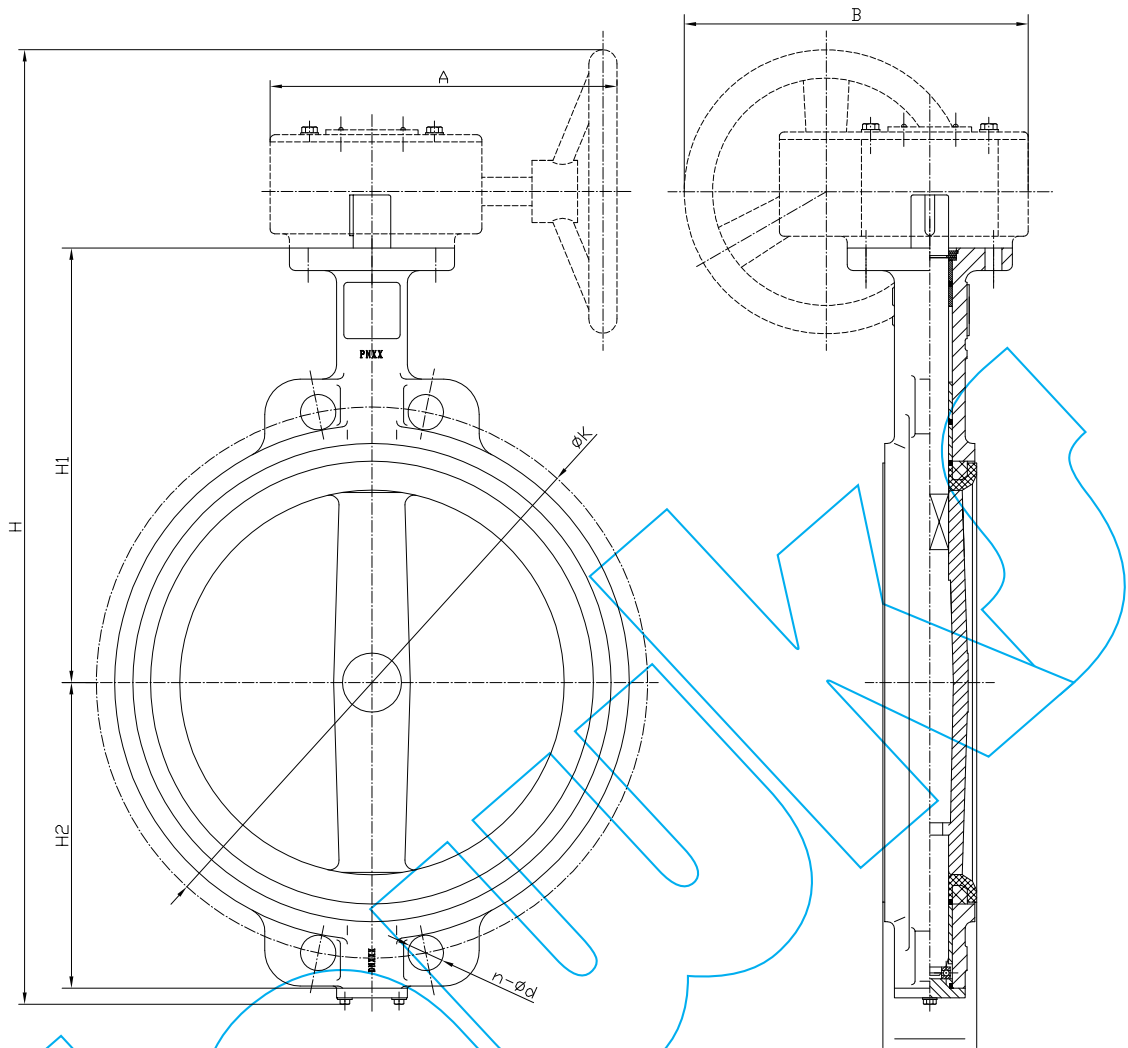




parameter Size	ΦK	n-Φd	H1	H2	H	A	B	L
DN200	295	8-Φ23	260	176	632	313	289	60±2
DN250	350	12-Φ23	292	207	695	313	289	68±2
DN300	400	12-Φ23	337	240	773	307	310	78±3
DN350	460	16-Φ23	368	273	831	307	310	78±3

Technical requirements:

1. Manufacture and inspection are according to GB/T 12238
2. Face to face is according to EN558. 1: 1995 series 20
3. Flange connection is according to EN1092-2
4. The driving device is connected with ISO5211 standard size

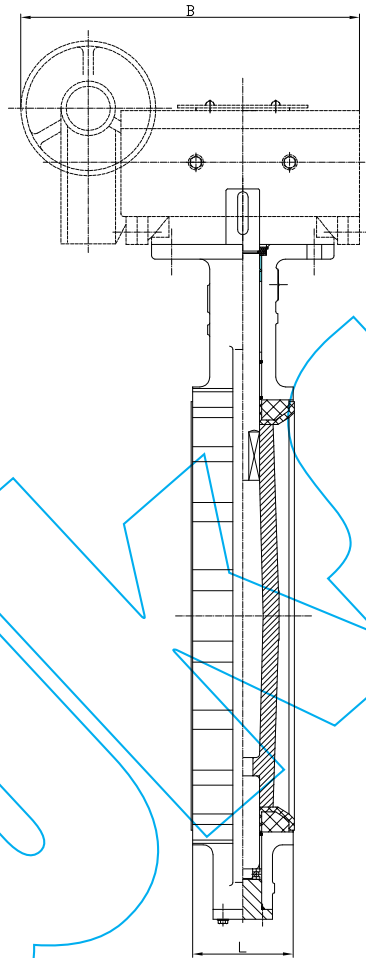
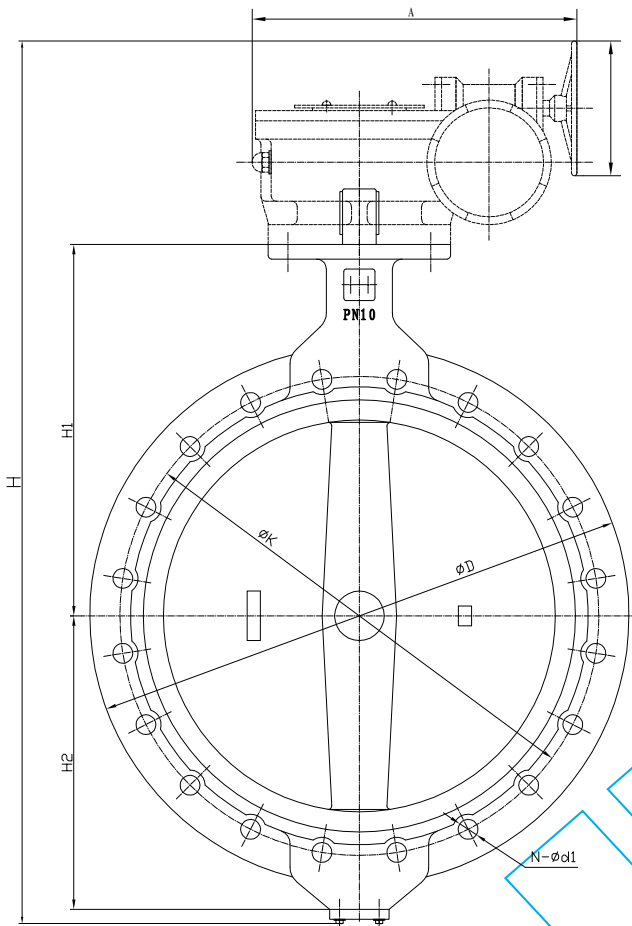


parameter Size	ΦK	n-Φd	H1	H2	H	A	B	L
DN400	515	16-Φ28	400	302	974	385	419	102±3
DN450	565	20-Φ28	422	319	1015	385	419	114±3
DN500	620	20-Φ28	480	355	1139	378	441	127±3
DN600	725	20-Φ31	562	444	1367	437	536	154±3

- Technical requirements:
1. Manufacture and inspection are according to GB/T 12238
 2. Face to face is according to EN558. 1: 1995 series 20
 3. Flange connection is according to EN1092-2
 4. The driving device is connected with ISO5211 standard size

Technical parameters

Nominal diameter(mm)	DN50-DN1000	
Nominal pressure(Mpa)	1.0/1.6	
Shell test(Mpa)	1.5/2.4	
Seal test(Mpa)	1.1/1.76	
Range of applicable	-30 ~ 135	
Applicable medium range	Water, sewage, oil, acid, alkali, salt, organic compounds	
Standard material	body	HT250、QT450
	plate	Pa11 nylon coatings
	seat	EPDM
	stem	45 # carbon steel
	Sealing ring	EPDM
Surface treatment	Epoxy resin powder coating	

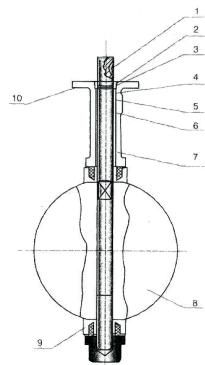


TORQUE LIST

Size	D	φK	n-φd1	L	H1	H2	H	A	B	φ
DN700	895	840	24-φ31	165	629	512	1525	512.5	615	400
DN800	1015	950	24-φ34	190	666	576	1628	512.5	615	400
DN900	1115	1050	28-φ34	203	722	635	1864	579	704	450
DN1000	1230	1160	28-φ37	216	800	700	2007	579	704	450

Technical requirements:

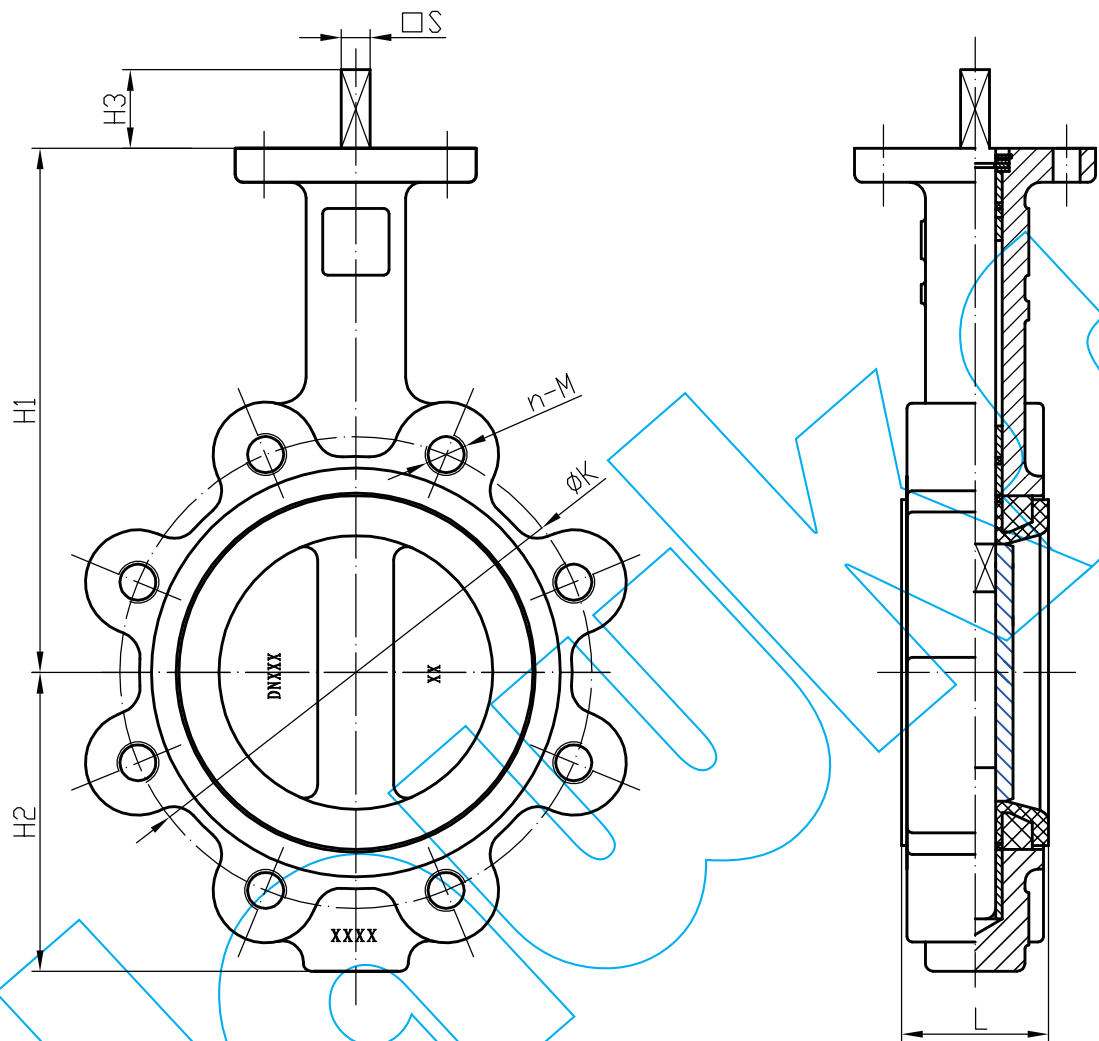
1. Manufacture and inspection are according to GB/T 12238
2. Face to face is according to EN558. 1: 1995 series 20
3. Flange connection is according to EN1092-2
4. The driving device is connected with ISO5211 standard size



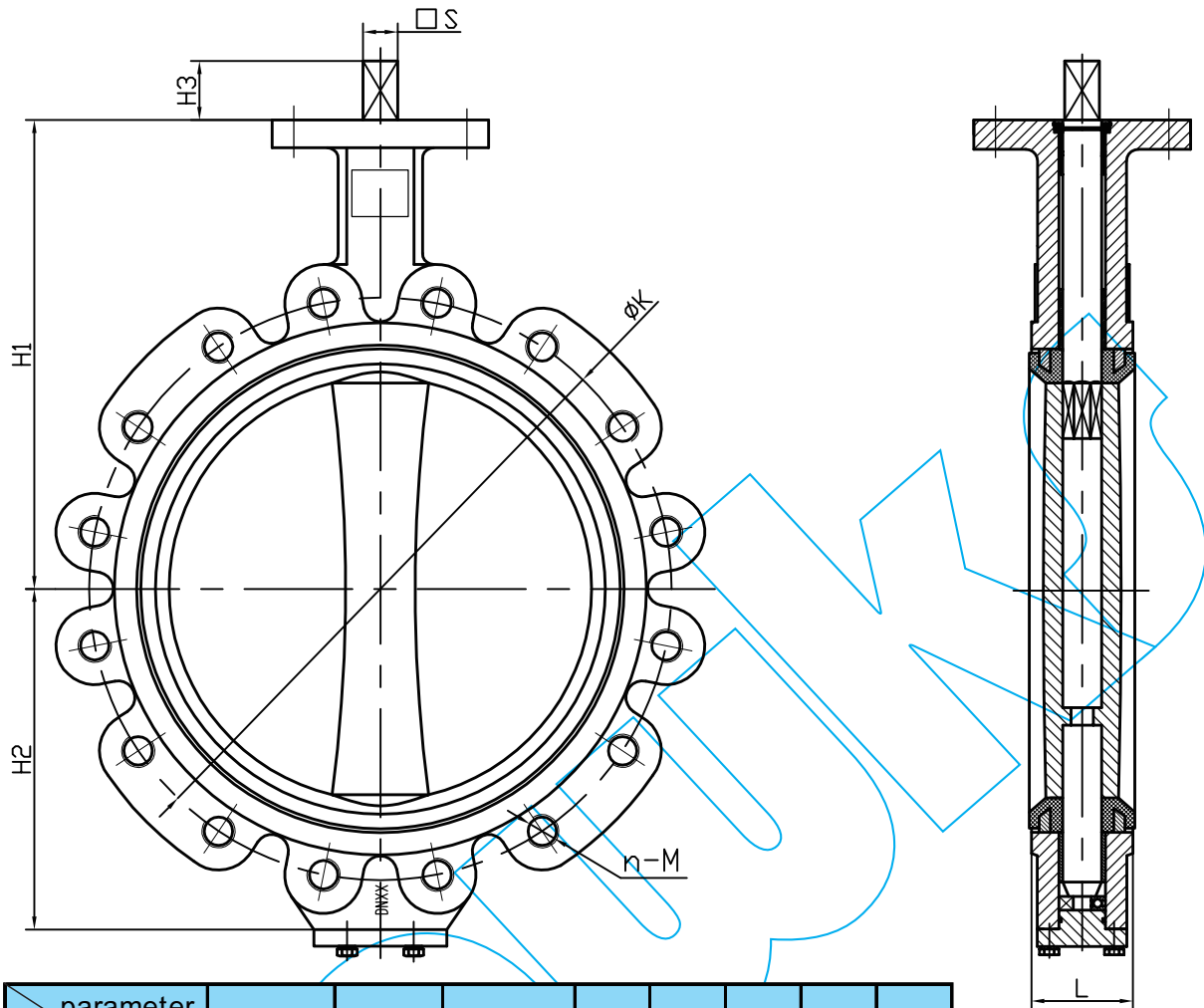
NO.	Name	Material
1	Key	Stainless steel
2	Spring collar	65Mn
3	Check washer	Stainless steel
4	Bush	Lubrication bronze
5	O ring	NBR,EPDM
6	Bush	Lubrication bronze
7	Bush	Lubrication bronze
8	Disc	Galvanized plate, Nylon board, Stainless steel plate, Aluminum bronze, Polyether chloride plate
9	Seat	NBR,EPDM,PTFE
10	Body	HT250,QT450,WCB

Working pressure Size	Working pressure	
	1.0MPa	1.6MPa Wet/Dry
DN50(2")	22.1	
DN65(2.5")	29.2	
DN80(3")	41.1	
DN100(4")	67.8	
DN125(5")	101	
DN150(6")	165	
DN200(8")	297	
DN250(10")	486	
DN300(12")	699	490/799
DN350(14")	825	625/969
DN400(16")	1133	846/1307
DN450(18")	1518	1131/1787
DN500(20")	2025	1431/2288
DN600(24")	3166	2301/3711
DN700(28")	4908	4908/7362
DN800(32")	6462	6462/9693
DN900(36")	7886	7885/11829
DN1000(40")	13389	13389/20083

LUG BUTTERFLY VALVE



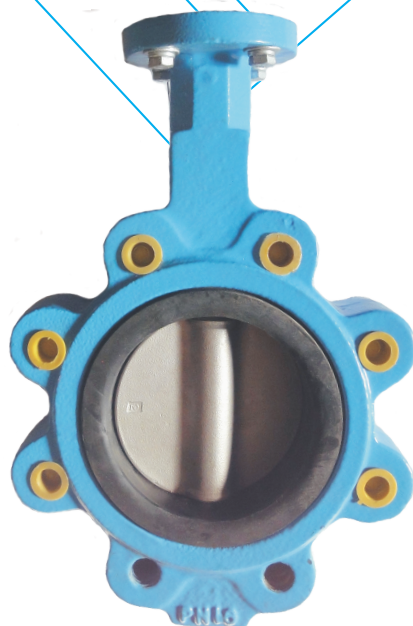
parameter	F (flange)	ΦK	n-M	L	H1	H2	H3	S
Specifications								
DN50	F05/07	Φ120.6	4-5/8"	43	162	76	30	9
DN65		Φ139.7	4-5/8"	46	175	89	30	9
DN80		Φ152.4	4-5/8"	46	181	94	30	9
DN100	F07	Φ190.5	8-5/8"	52	200	114	30	11
DN125		Φ215.9	8-3/4"	56	213	127	30	14
DN150		Φ241.3	8-3/4"	56	225	140	30	14
DN200	F10	Φ298.5	8-3/4"	60	260	176	45	17
DN250		Φ362	12-7/8"	68	292	207	45	22
DN300	F12	Φ431.8	12-7/8"	78	337	240	45	22
DN350		Φ476.3	12-1"	78	368	273	45	22



parameter	F(flange)	ΦK	n-M	L	H1	H2	H3	S
Specifications								
DN400	F14	Φ539.8	16-1"	102	400	302	55	27
DN450		Φ577.9	16-1 1/8"	114	422	319	55	27
DN500	F16	Φ635	20-1 1/8"	127	480	355	65	36
DN600		Φ749.3	20-1 1/4"	154	562	444	65	36

TORQUE LIST

Working pressure	1.0MPa	1.6MPa
Size		Wet/Dry
DN50(2")	22.1	
DN65(2.5")	29.2	
DN80(3")	41.1	
DN100(4")	67.8	
DN125(5")	101	
DN150(6")	165	
DN200(8")	297	
DN250(10")	486	
DN300(12")	699	490/799
DN350(14")	825	625/969
DN400(16")	1133	846/1307
DN450(18")	1518	1131/1787
DN500(20")	2025	1431/2288
DN600(24")	3166	2301/3711



**Fenghua Yuandong Auto Parts Co., Ltd.
Fenghua Hawks Automatic Equipment Co., Ltd.
Fenghua Haks Import and Export Co., Ltd.**

Address: No. 278 Yuelin Road East, Fenghua, Ningbo, Zhejiang Province, 315500, P.R.China

Tel: +86-574-88912193,88912911

Fax: +86-574-88935669

Email: info@cn-hawks.com

Web: [Http:// www.cn-hawks.com](http://www.cn-hawks.com)

@2011 Fenghua Yuandong Auto Parts Co., Ltd. all rights reserved.

We reserve the rights to modify without notice.