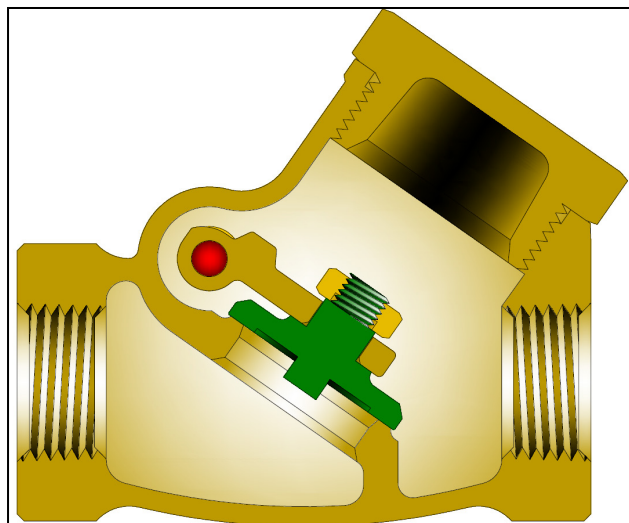


# MSS SP-80 SWING CHECK VALVES

THREADED BONNET, THREADED ENDS  
 1/4" - 3" (6 - 75mm) CLASSES 200 & 300  
 BRONZE Y-PATTERN



Class	Fig. No.
200	0560
300	0563

**DESIGN FEATURES:**

- By unscrewing the side plug and removing the cap and carrier pin, the carrier and disc assembly can be easily removed.
- Renewable disc is held by a locknut.
- Integral seats.
- Valves can be used in a horizontal or vertical position; however, when installed in vertical line, flow must be upward with pressure under the disc.
- Each valve is shell and seat pressure tested per industry standard MSS SP-80.
- Valves are specially cleaned and processed for oxygen or cryogenic service and are then sealed to prevent contamination.

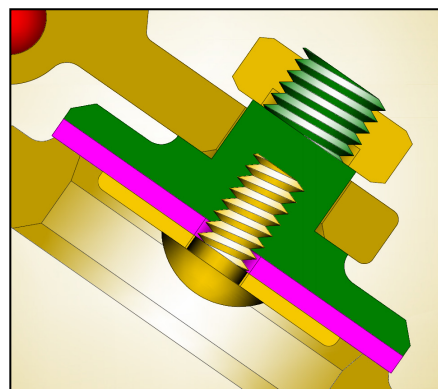
**STANDARD MATERIALS**

PART	MATERIALS
Body	B61
Cap	B61 (1)
Disc or Disc Holder (2)	B61 or B371 C69400
Disc Nut	B16
Disc Insert (2)	PCTFE (3)
Disc Plate (2)	B16
Screw or Disc Plate Nut (2)	B16
Carrier	B62 or B124 C37700
Carrier Pin	B16
Side Plug	B16

1. B16 for 3/4" and smaller sizes
2. Soft Seat design
3. Other insert materials available

**Design Specifications**

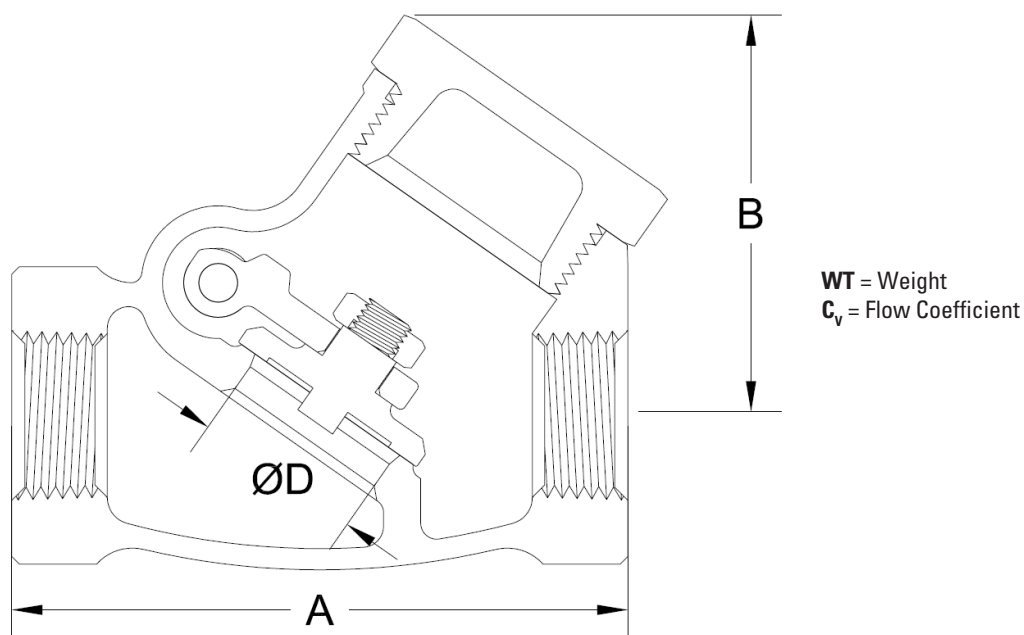
Item	Applicable Specification
Pressure - temperature ratings	MSS SP-80
General valve design	MSS SP-80
Thread design	ASME B1.20.1
Materials	ASTM



Soft Seat Design (2)

# SWING CHECK VALVE DIMENSIONS (CLASSES 200 & 300)

SIZE	FIG 560					FIG 563				
	A	B	D	WT	C <sub>v</sub>	A	B	D	WT	C <sub>v</sub>
in mm				lb kg					lb kg	
¼	2.25	1.4	0.25	0.6	1	2.38	1.5	0.25	0.7	0.9
6	57	35	6	0.3		60	38	6	0.3	
3/8	2.38	1.4	0.38	0.6	2	2.50	1.5	0.38	0.7	2.4
10	60	35	10	0.3		64	38	10	0.3	
½	2.75	1.7	0.50	0.8	4	2.88	1.8	0.50	1.0	4.1
13	70	43	13	0.4		73	46	13	0.5	
¾	3.13	2.0	0.75	1.3	9	3.25	2.1	0.75	1.6	9.1
20	79	51	19	0.6		83	54	19	0.7	
1	3.63	2.4	1.00	2.0	20	3.75	2.5	1.00	2.3	16.4
25	92	60	25	0.9		95	64	25	1.0	
1¼	4.38	3.0	1.25	3.4	30	4.50	3.1	1.25	4.1	30
32	111	76	32	1.5		114	79	32	1.9	
1½	5.00	3.5	1.50	4.8	40	5.13	3.6	1.50	5.9	40
40	127	89	38	2.2		130	90	38	2.7	
2	6.13	4.3	2.00	8.0	75	6.38	4.4	2.00	10.3	75
50	156	108	51	3.6		162	111	51	4.7	
2½	7.25	5.1	2.50	13.7	120	7.50	5.2	2.50	17.0	120
65	184	129	64	6.2		191	132	64	7.7	
3	8.50	5.9	3.00	20.3	175	8.75	6.0	3.00	25.3	175
75	216	149	76	9.2		222	152	76	11.5	

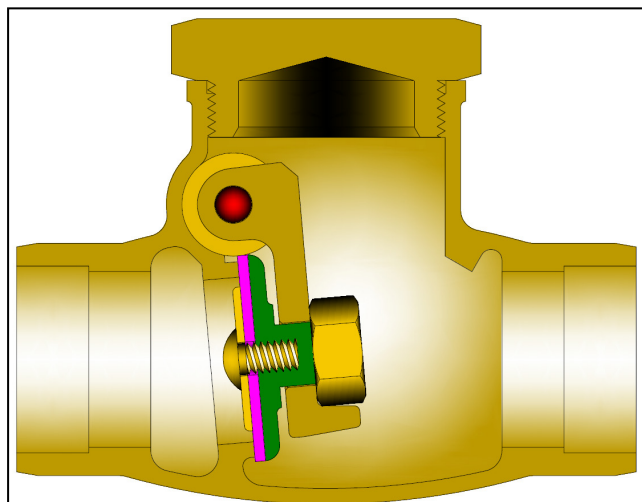


# MSS SP-80 SWING CHECK VALVES

THREADED BONNET, SILVER BRAZE TUBING ENDS

1/2" - 3" (13 - 75mm) CLASS 200

BRONZE



Class	Fig. No.
200	2825

## STANDARD MATERIALS

PART	MATERIALS
Body	B61
Cap	B61 (1)
Disc or Disc Holder (2)	B62 or B371 C69400 or B16
Disc Nut	B16
Disc Insert (2)	PCTFE (3)
Disc Plate (2)	B16
Screw or Disc Plate Nut (2)	B16
Carrier	B62 or B124 C37700
Carrier Pin	B16
Side Plug	B16

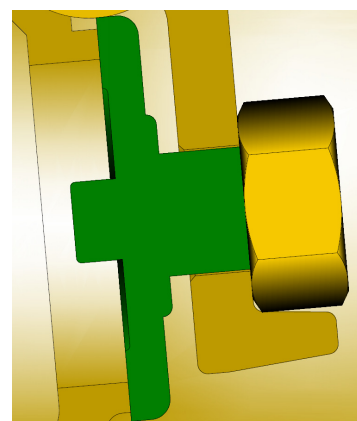
1. B16 for 3/4" and smaller sizes
2. Soft Seat design
3. Other insert materials available

## Design Specifications

Item	Applicable Specification
Pressure - temperature ratings	MSS SP-80
General valve design	MSS SP-80
Materials	ASTM

## DESIGN FEATURES:

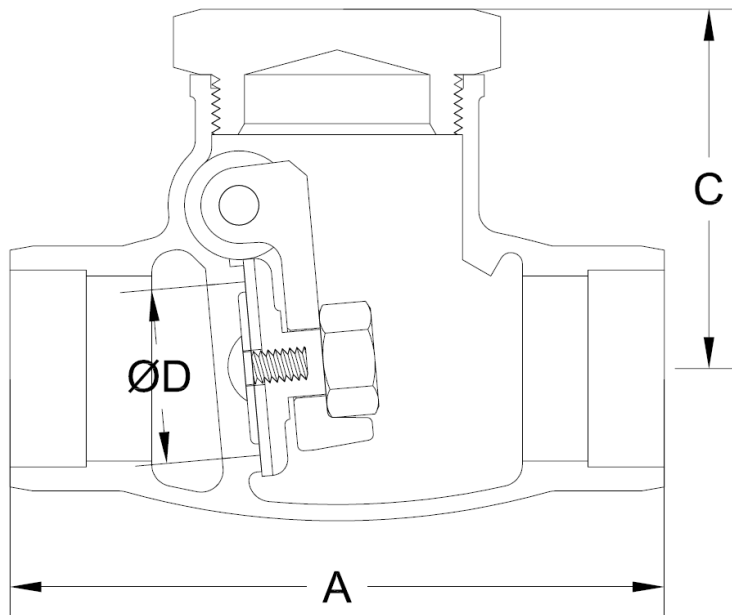
- By unscrewing the side plug and removing the cap and carrier pin, the carrier and disc assembly can be easily removed.
- Renewable disc is held by a locknut.
- Integral seats.
- Valves can be used in a horizontal or vertical position; however, when installed in vertical line, flow must be upward with pressure under the disc.
- Each valve is shell and seat pressure tested per industry standard MSS SP-80.
- Valves are specially cleaned and processed for oxygen or cryogenic service and are then sealed to prevent contamination.



Metal Seat Design

### SWING CHECK VALVE DIMENSIONS (CLASS 200)

SIZE	FIG 560				
	A	C	D	WT	C <sub>v</sub>
½	3.00	1.4	0.50	1.0	4
13	76	35	13	0.5	
¾	3.38	1.7	0.75	1.5	9
20	86	43	19	0.7	
1	3.75	2.1	1.00	1.5	20
25	95	52	25	0.7	
1½	4.75	2.9	1.50	3.1	40
40	121	75	38	1.4	
2	5.50	3.3	2.00	5.0	75
50	140	84	51	2.3	
2½	7.25	3.9	2.50	8.3	120
65	184	100	64	3.8	
3	8.38	4.5	3.00	13	175
75	213	114	76	5.9	



WT = Weight  
 C<sub>v</sub> = Flow Coefficient