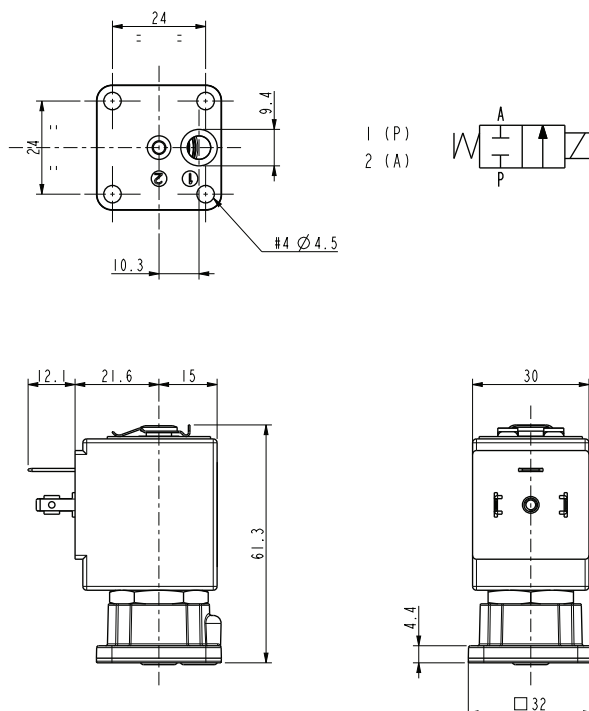


ASCO™ SOLENOID VALVE

2/2 NORMALLY CLOSED – DIRECT ACTING - SUB-BASE MOUNTING

SERIES
L134-N05



General Features

Direct acting solenoid valve, designed for sub-base mounting or directly on the equipment.

Inlet and outlet ports placed asymmetrically at the bottom of the body.

Valve delivered with sealing O-rings.

Suitable to shut off liquid and gaseous fluids, particularly suitable to shut off refrigerating (fluids verify the compatibility of fluid with materials in contact).

Technical Features	
Maximum allowable pressure (PS)	40 bar
Opening time	~20ms
Closing time	~20ms
Fluid temperature	-10°C +90°C
Max viscosity	5°E (~37 cStokes or mm ² /s)

Materials in Contact with Fluid	
Body	Brass
Sealing	CR70N
Internal components	Stainless steel
Seat	Brass
Core tube	Stainless steel
Shading coil	Copper

Coil		
Approval	UL (class F) – for UL cl.H: ZA34 (E153691)	
Continuous duty	ED 100%	
Encapsulation material	PPS (Polyphenylsulfure) fiberglass reinforced	
Insulation class	F (155°C) on request class H (180°C)	
Ambient temperature	-10°C +50°C	
Electric connections	DIN 46340 - 3 poles plug connector (EN175301-803)	
Protection degree	IP 67 (EN 60529) with plug connector	
Voltages	DC	12-24V (+10% -5%)
	AC	24V/50Hz - 110V/50Hz (120V/60Hz) - 230V/50Hz (+10% -15%)
	(Other voltages and frequencies on request)	

Port size	Orifice size (mm)	Differential pressure (bar)						Kv (m³/h)	Series and type		Power absorption			Sealings	Notes	Weight (kg)
		Δp min	Δp max													
			Gases			Liquids										
			AC	DC		AC	DC		DC	Valve	Coil	AC (VA)				
										Inrush	Holding					
-	3	0	20	15	20	15	0,18	L134N05	ZA10A	23	14	9	CR70N	-	0,240	

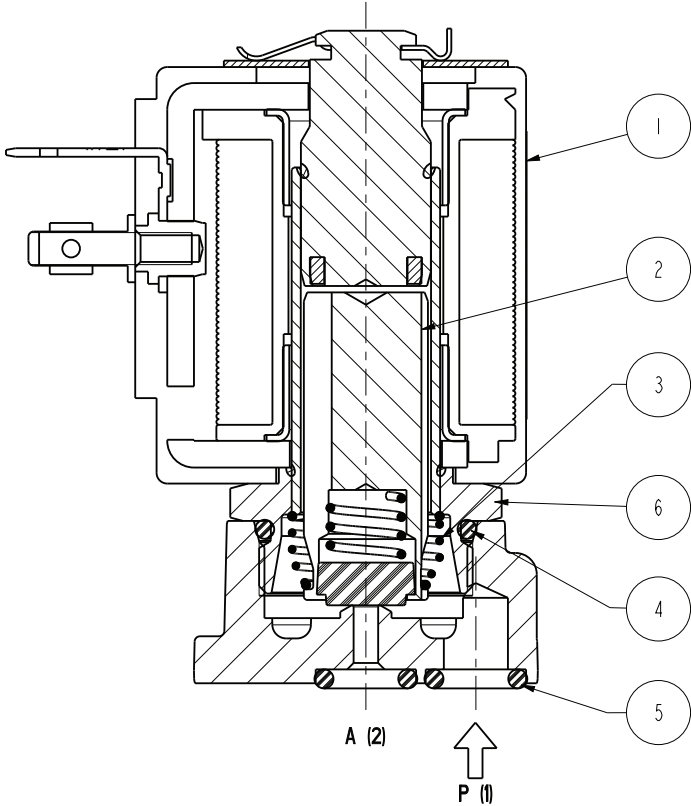
Notes

- Sealings : CR70N = Chloroprene elastomer
- IMQ CSV approval, see ZA10 datasheet for further details

SERIES
L134-N05

ASCO™ SOLENOID VALVE
2/2 NORMALLY CLOSED – DIRECT ACTING - SUB-BASE MOUNTING

Spare Parts



Kit description	Kit P.N.	Consisting of:
Core kit	G3022805	Core pos. 2
Core return spring kit	G3022401	N. 10 core return spring pos. 3
OR guide assembly kit	GU2445000017	N.10 OR guide assembly pos. 4
OR body kit	GU2445000007	N.10 OR body pos.5
Guide assembly kit	G31486	Guide assembly pos.6 Coil clip
Coil	ZA10A	Coil pos. 1

Installation

- Solenoid valve can be mounted in any position; vertical with coil upwards preferred.

THE VALIDITY OF REPORTED DATA IS REFERRED TO THE DATE OF ISSUE. POSSIBLE UPDATES ARE AVAILABLE ON REQUEST