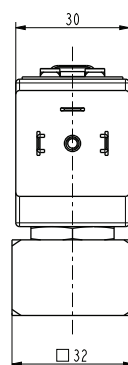
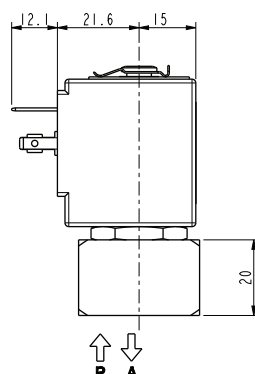
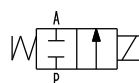
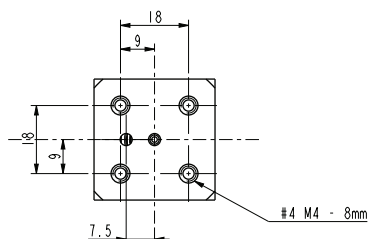


ASCO™ SOLENOID VALVE

2/2 NORMALLY CLOSED – DIRECT ACTING - SUB-BASE MOUNTING

SERIES
L122



General Features

Direct acting solenoid valve, designed for sub-base mounting or directly on the equipment.

Inlet and outlet ports placed asymmetrically at the bottom of the body.

Suitable to shut off liquid and gaseous fluids; (verify the compatibility of fluid with materials in contact).

Technical Features	
Maximum allowable pressure (PS)	40 bar
Opening time	~30ms
Closing time	~30ms
Fluid temperature	0°C +130°C (FPM) -10°C +170°C (stainless steel)
Max viscosity	5°E (~37 cStokes or mm²/s)

Materials in Contact with Fluid	
Body	Brass
Sealing	FPM or stainless steel
Internal components	Stainless steel
Seat	Brass or stainless steel
Guide assembly	Stainless steel
Shading ring	Copper

Coil		
Approval	UL (class F) – for UL cl.H: ZA34 (E153691)	
Continuous duty	ED 100%	
Encapsulation material	PPS (Polyphenylsulfure) glass fibre reinforced	
Insulation class	F (155°C) on request class H (180°C)	
Ambient temperature	-10°C +50°C	
Electric connections	DIN 46340 - 3 poles connectors (EN175301-803)	
Protection degree	IP 67 (EN 60529) with plug connector	
Voltages	DC	12-24V (+10% -5%)
	AC	24V/50Hz - 110V/50Hz (120V/60Hz) - 230V/50Hz (+10% -15%) (Other voltages and frequencies on request)

Port size	Orifice size (mm)	Differential pressure (bar)					Kv (m³/h)	Series and type		Power absorption			Sealings	Notes	Weight (kg)
		Δp min	Δp max							AC (VA)	DC (W)				
			Gases		Liquids			Inrush	Holding						
			AC	DC	AC	DC									
-	1,6	0	-	-	30	-	0,1	L122M02	ZA10A	23	14	9	S/Steel	1	0,320
	2,3		20	16	20	16	0.15	L122V01					FPM	-	

Notes

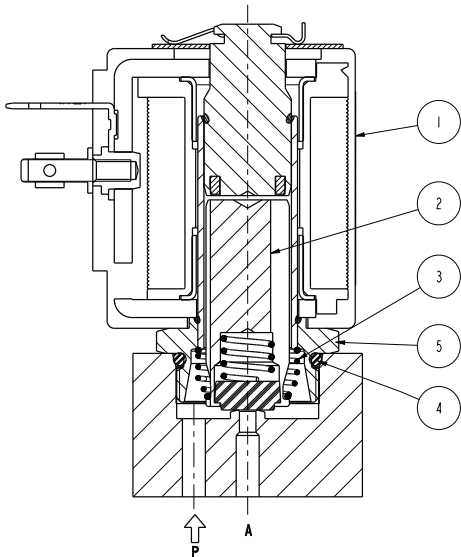
- Sealings : FPM = Fluoro-carbon elastomer
- IMQ CSV approval, see ZA10 datasheet for further details
- 1 – Model with stainless steel seat.

SERIES
L122

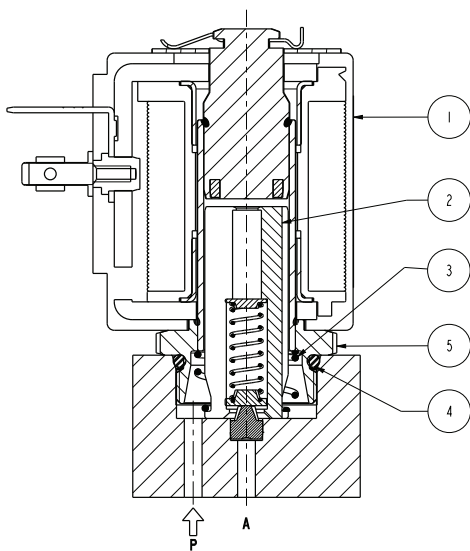
ASCO™ SOLENOID VALVE
2/2 NORMALLY CLOSED – DIRECT ACTING - SUB-BASE MOUNTING

Spare Parts

L122 V01



L122 M02



Kit description	Model	Kit P.N.	Consisting of:
Core kit	L122V01	G3022803	Core pos. 2
	L122M02	G3068401	
Core return spring kit	L122V01	G3022401	N°. 10 core return spring pos. 3
	L122M02	G3018901	
OR guide assembly kit		GU2424000017	N.10 OR guide assembly pos. 4
Coil		ZA10A	Coil pos. 1

Installation

- Solenoid valve can be mounted in any position; vertical with coil upwards preferred.

THE VALIDITY OF REPORTED DATA IS REFERRED TO THE DATE OF ISSUE. POSSIBLE UPDATES ARE AVAILABLE ON REQUEST