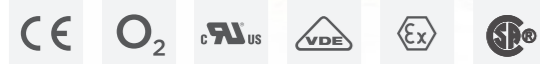


31JN - 31JL SERIES

General purpose - 3-way - Direct Acting

31JN - 31JL Series are compact 3-way direct acting valves with 10 mm armature tube. Thanks to a wide range of flow and pressure ratings these valves can be suitable for several applications. The armature tube is made of stainless steel to ensure greater strength and durability to the valve. Available on request the version with screw manual operator.



TECHNICAL DATA

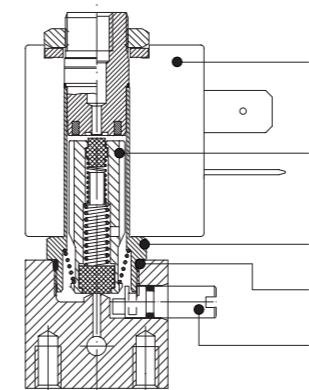
PORT CONNECTION	G1/8, M5, subbase	
SEALING MATERIALS	NBR	FKM
FLUID TEMPERATURE	-10°C +90°C	-10°C +140°C
FLUIDS	Air, inert gas, water	
VISCOSITY	12 cSt up to orifice 1.5 mm, 37 cSt for orifice 2.0 mm and above	
TUBE Ø - COIL WIDTH - SERIES	ø 10 mm - 22 mm	LBA05, LVA05 (class F), LBV05 (class H)
INSTALLATION	as required, preferably with actuator upright	
PROTECTION DEGREE	IP65 EN 60529 (DIN 40050) with plug connector	

MATERIALS

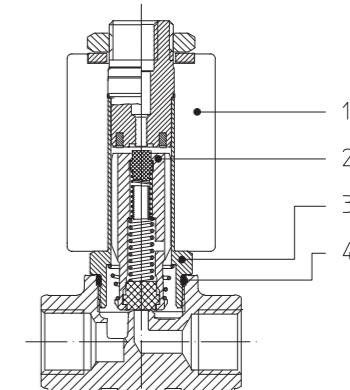
BODY, ORIFICE	Brass UNI EN 12165 CW617N or AISI 316
ARMATURE TUBE	Stainless steel AISI Series 300
FIXED CORE	Stainless steel AISI Series 400
PLUNGER	Stainless steel AISI Series 400
PHASE DISPLACEMENT RING	Copper (Cu 99,9%) or gold plated copper
SPRING	Stainless steel AISI Series 300
SEALING	B=NBR, V=FKM

- CE**
 - 2014/35/EU (LVD)
 - 2014/30/EU (EMC)
 - 2014/68/EU (PED)
 art. 4.3 up to 1"
- INDUSTRIAL OXYGEN**
 Special versions suitable for contact with industrial oxygen are available. Please refer to codification options.
- UL recognized and VDE, CSA**
 approved coils are available for this series, please refer to coil section.
- EXPLOSION PROOF COILS**
 suitable for zone 2-22 are available for this series. Please refer to ATEX coil section for further details.

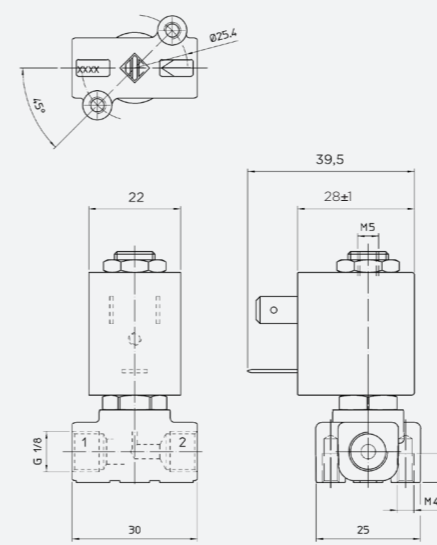
3/2 NC BRASS WITH MANUAL OPERATOR



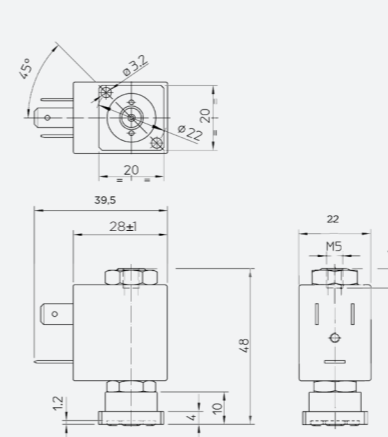
3/2 NC BRASS



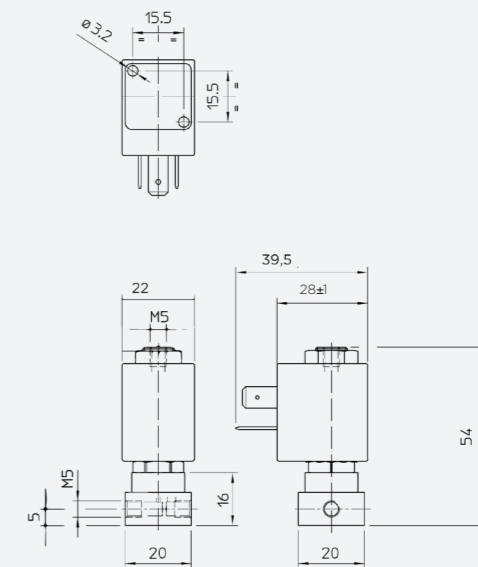
DRAWING 1



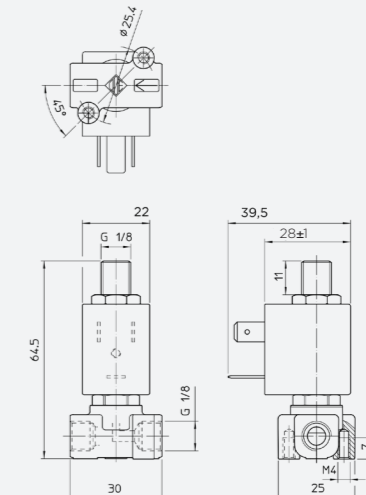
DRAWING 3



DRAWING 2



DRAWING 4



Please read and agree our GENERAL CONDITIONS before placing an order. All the information are exclusive ownership of ODE S.r.l. All rights reserved ©ODE S.r.l.

■ The fluids listed in the "technical data" tables should be considered as a recommendation. Please check the chemical compatibility of the fluids with the materials of the valve at RFQ stage.
 ■ G type thread in accordance with ISO 228/1. M5 thread in accordance with ISO 261.
 ■ For spare parts list please refer to the dedicated chapter.

