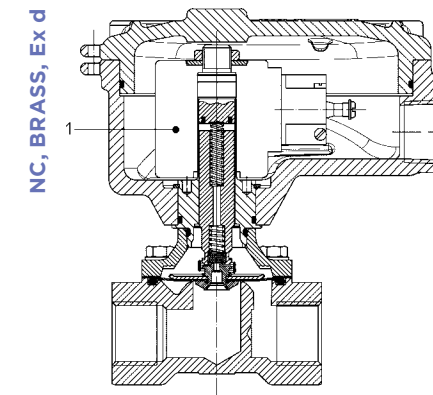
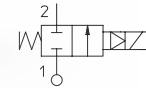


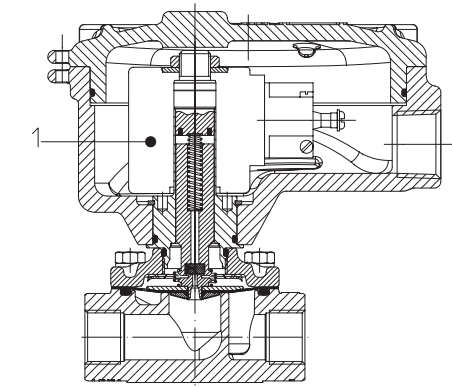
21HT - 21IH SERIES

Solenoid Valves, 2-way, Combined acting

21HT, 21HF and 21IH are combined acting solenoid valves which do not require a minimum operating pressure differential. These valves are suitable for vacuum operations. 21HT series is provided with fiber reinforced diaphragms for optimized durability.



NC, BRASS, Ex d



NC, STAINLESS STEEL, Ex d

Atex ■ Solenoid Valves ■ 2-way ■ Combined acting ■ 21HT - 21IH SERIES



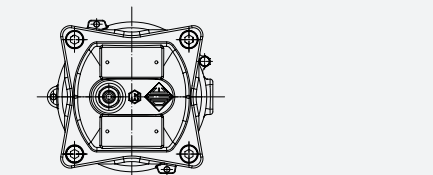
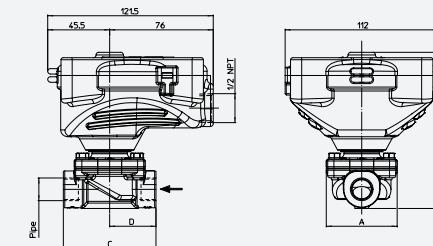
TECHNICAL DATA

PORT CONNECTION	G 3/8 ÷ G 1 1/2		
SEALING MATERIALS	NBR+PA		FKM+PA
FLUID TEMPERATURE	-10°C + 90°C		-10°C + 140°C
FLUIDS	AIR, INERT GASES, WATER		oils, gasoline, diesel
VISCOSITY	max. 12 cSt		
TUBE Ø - COIL WIDTH - SERIES	Ex d	ø 13 mm - 30 mm	BDV08 (class H)
INSTALLATION	as required, preferably with actuator upright		
PROTECTION DEGREE	Ex d	IP67 EN 60529 (DIN 40050) with cable gland IP67 or higher	

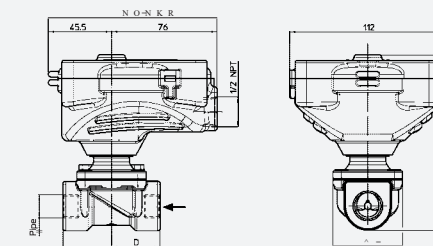
MATERIALS

BODY, ORIFICE	Brass UNI EN 12165 CW617N or stainless steel AISI 316		
ARMATURE TUBE	Stainless steel AISI Series 300		
FIXED CORE	Stainless steel AISI Series 400		
PLUNGER	Stainless steel AISI Series 400		
PHASE DISPLACEMENT RING	Copper (Cu 99,9%) or gold plated copper		
SPRING	Stainless steel AISI Series 300		
SEALING	Y=NBR+PA, V=FKM+PA		

DRAWING 1



DRAWING 2



PIPE ISO 228/1	DIMENSIONS [mm]			
	A	B	C	D
G3/8	50	113	56	28
G1/2	50	125	70	35
G3/4	50	125	70	35
G1	65	131	104	52

PIPE ISO 228/1	DIMENSIONS [mm]			
	A	B	C	D
G3/8	52	114,5	68	34
G1/2	52	114,5	68	34
G3/4	58	123	75	37,5
G1	65	131	90	45
G1 1/4	94	126,5	128	64
G1 1/2	94	126,5	128	64

CE

- 2014/35/EU (LVD)
- 2014/30/EU (EMC)
- 2014/68/EU (PED) art. 4.3 up to 1", cat. I module A above 1"
- 2014/34/EU (ATEX). Refer to next pages for the complete marking.

INDUSTRIAL OXYGEN

Special versions suitable for contact with industrial oxygen are available. Please refer to codification options.

UL recognized and VDE, CSA

approved coils are available for this series, please refer to coil section.

Please read and agree our GENERAL CONDITIONS before placing an order. All the information are exclusive ownership of ODE S.r.l. All rights reserved ©ODE S.r.l.

■ The fluids listed in the "technical data" tables should be considered as a recommendation. Please check the chemical compatibility of the fluids with the materials of the valve at RFQ stage.
 ■ For spare parts list please refer to the dedicated chapter.

Ex d - 2/2 NC

PIPE	ORIFICE SIZE	Kv	COIL SERIES	PRESSURE [bar]			CODE		DRAWING REFERENCE	
				MIN	MOPD		PS	BRASS		STAINLESS STEEL
					AC	DC				
G3/8	11	20	BDV08	0	14	5	16	21HT3KIY110	-	1
	15	40	BDV08	0	14	6	16	-	21H3KIV150	2
G1/2	16	40	BDV08	0	14	5	16	21HT4KIY160	-	1
		50	BDV08	0	14	6	16	-	21H4KIV160	2
G3/4	16	40	BDV08	0	14	5	16	21HT5KIY160	-	1
		60	BDV08	0	14	6	16	-	21H6KIV200	2
G1	25	120	BDV08	0	6	-	16	21HT6KIY250	-	1
		140	BDV08	0	14	3	16	-	21H6KIV250	2
G1 1/4	35	300	BDV08	0	8	-	16	-	21H7KIV350	2
G1 1/2	40	320	BDV08	0	8	-	16	-	21H8KIV400	2



According to Directive 2014/34/EU ATEX

II 2G Ex d IIC T6 o T5 Gb
II 2D Ex tb IIIC T80°C o T95°C Db IP67

I	II	III	IV	V	VI	VII
2	1	HT	3	K	Y	110

I. NUMBER OF WAYS
2 - 2-way

II. NUMBER OF ELEMENTS
1 - 1 element

III. SERIES
HT - Brass body
IH - StSt body

IV. CONNECTIONS
3 - G3/8
4 - G1/2
5 - G3/4
6 - G1
7 - G1 1/4
8 - G1 1/2

V. CORE TUBE TYPE
KI - for 2/2 NC valves, Ex d

VI. SEALING MATERIAL for HT and IH series
Y - NBR+PA
V - FKM+PA

VII. ORIFICE Ø [mm] MULTIPLIED BY 10

CODIFICATION

For sealing different from NBR+PA or FKM+PA replace the letter "Y" and "V" with the ones corresponding to the other materials.
Y = NBR+PA, V = FKM + PA.