

2/2 energise to open (normally closed)

Certification T6 (Tamb = -55°C to +50°C (-67°F to + 122°F)) & T4 (Max ambient +90°C (+194°F)) or equipment must be used within 'T' class temp ranges shown.

EX II 2 GD - gas and dust environments.

Exd protection, gas group IIC.

Atex certification SIRA 05ATEX1156, complies with ATEX directive 94/9/EC

IECEX certification IECEX SIR 05.0029

Safety integrity level SIL 3 or SIL 4 (SIL 4 in a redundant configuration only)

Protection IP66/X8, NEMA 4X



Technical features

Max. inlet pressure: 0-12 bar (0-174 psi)

Flow rates: $C_v = 0.6$ USgpm for 1 psi Δp

$K_v = 8.7$ l/min for 1 bar (15 psi) Δp

Port size: 1/4"

Process connections: NPT

Conduit / Signal Conns:

M20 x 1.5mm ISO (F)

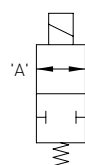
Media: Customer to specify and confirm compatibility

Weight: 2 kg

Electrical information

Voltage (nominal)	24V DC		Pull-in Voltage	$\geq 87.5\%$ of nominal
Response Times (Typ)	Pull-in	< 80 MS	Drop Out	< 60 MS
Drop Out			Drop-Out Voltage	10 - 20% of nominal
Voltage Protection	Surge suppression diodes fitted as STD		Coil Encapsulation	Class H
Leak Performance	Bubble tight at -50 °C. < 30 cc/m at -55 °C.		Coil Duty Cycle	100%

ICO3S 1/4" 2/2 12 BAR (174 PSI) AUTO



Temperature ratings:

Media (min/max): -55°C/90°C

(-67°F/194°F)

Ambient: must be used within 'T' class temperature ranges shown

Coil Rating: 190 ohms

Power Consumption: 3 watts

Operation: Automatic

Materials: Valve body & trim -

316L stainless steel

O-Rings seats & seals - nitrile

Paint finish - 316LSS coil housing

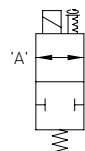
- unpainted

Ordering information:

Quote: Y011AA1H1BS

Options: None

ICO3S 1/4" 2/2 12 BAR (174 PSI) JSMO



Temperature ratings:

Media (min/max): -10°C/90°C

(+14°F/194°F)

Ambient: must be used within 'T' class temperature ranges shown

Coil Rating: 190 ohms

Power Consumption:

3 watts

Operation:

Jackscrew manual override

Materials:

Valve body & trim - 316L stainless steel

O-Rings seats & seals - FKM

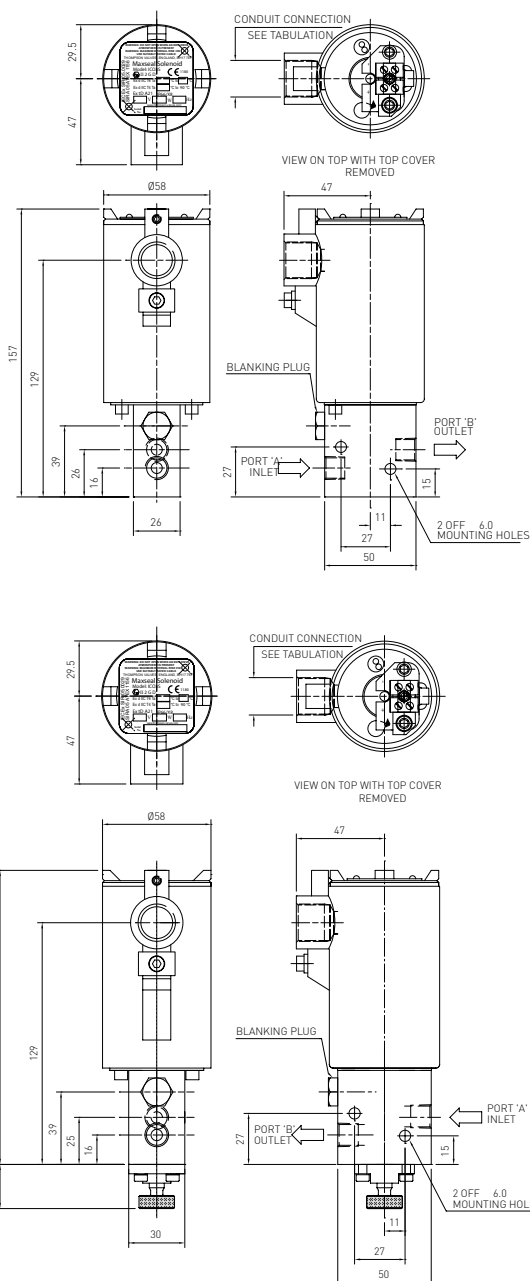
Paint finish - 316LSS coil housing

- unpainted

Ordering information:

Quote: Y011SA1V1BS

Options: None



Model ICO3S 1/4" 3/2 UNI

Direct acting solenoid valve

High flow

Max inlet pressure 12 bar (174 psi)

A direct acting solenoid operated valve for the control of pneumatic or hydraulic operated equipment

Reliable and long life, ideal for a one time installation

ATEX, CSA, GOST K & R, IECEX and NEMA 4X

Technical features

Maximum inlet pressure: 12 bar (174 psi)

Flow rates:

$C_v = 0.6$ USgpm for 1 psi Δp

$K_v = 8.64$ l/min for 1 bar (15 psi) Δp

Temperature ratings:

Media (min/max -50°C/90°C (-58°F/194°F))

Ambient (min/max -50°C/60°C (-58°F/140°F))

Valve size: 1/4" poppet valve

Process connections: 1/4" NPT, 1/4" BSP

Conduit connection:

M20 x 1.5 conduit thread, 1/2" NPT

Signal connection: 1/4" NPT

Media: Liquid & gases

Weight: 2.5 kg

Materials:

Solenoid pot - stainless steel - BFC 316

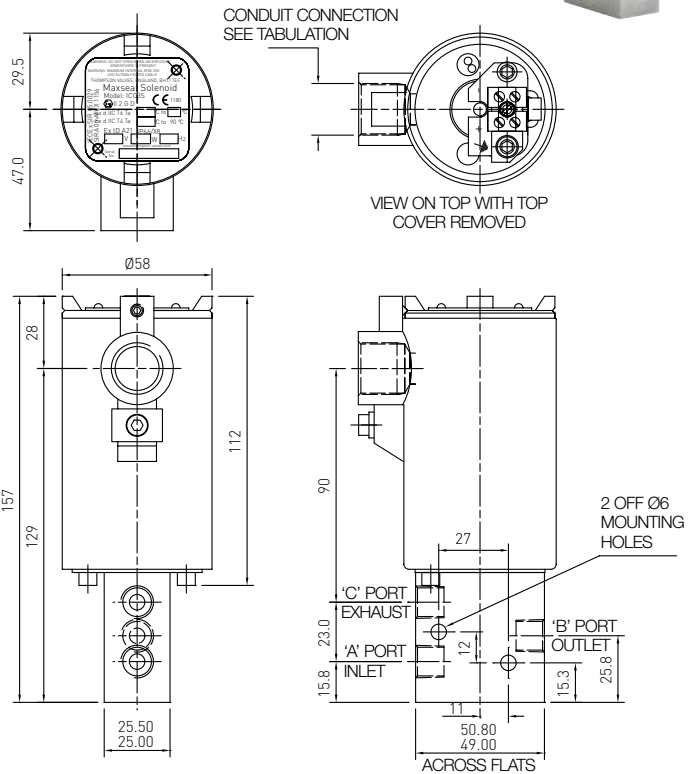
Top cover - stainless steel - BFC 316

Valve body & trim materials -

316 stainless steel - 316L stainless steel

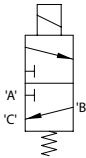
O-rings & seals - nitrile (NBR)

Coil insulation - class H



Profile and dimensions mm

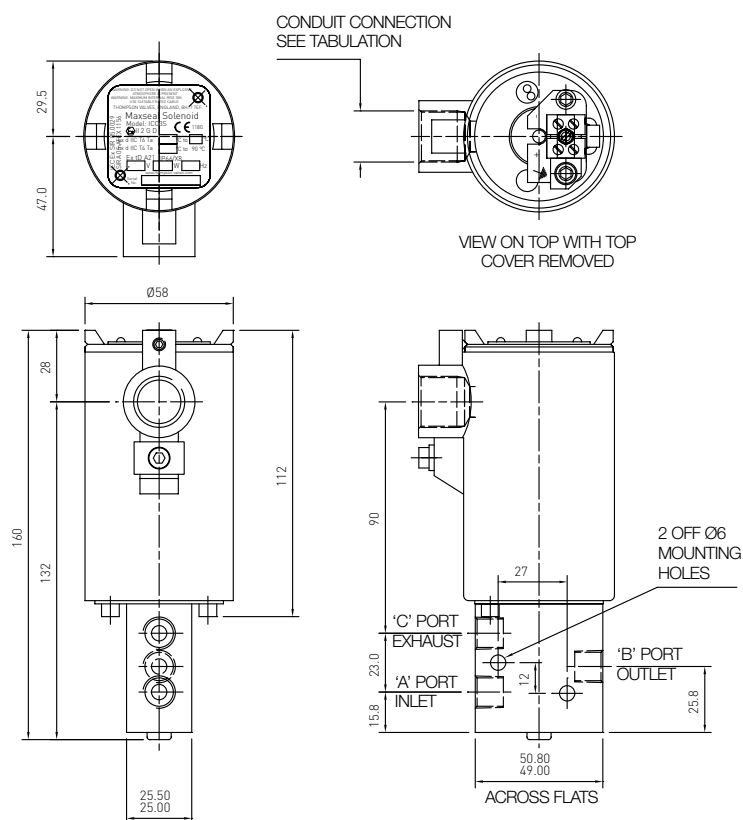
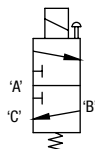
ICO3S 1/4" 3/2 AUTO



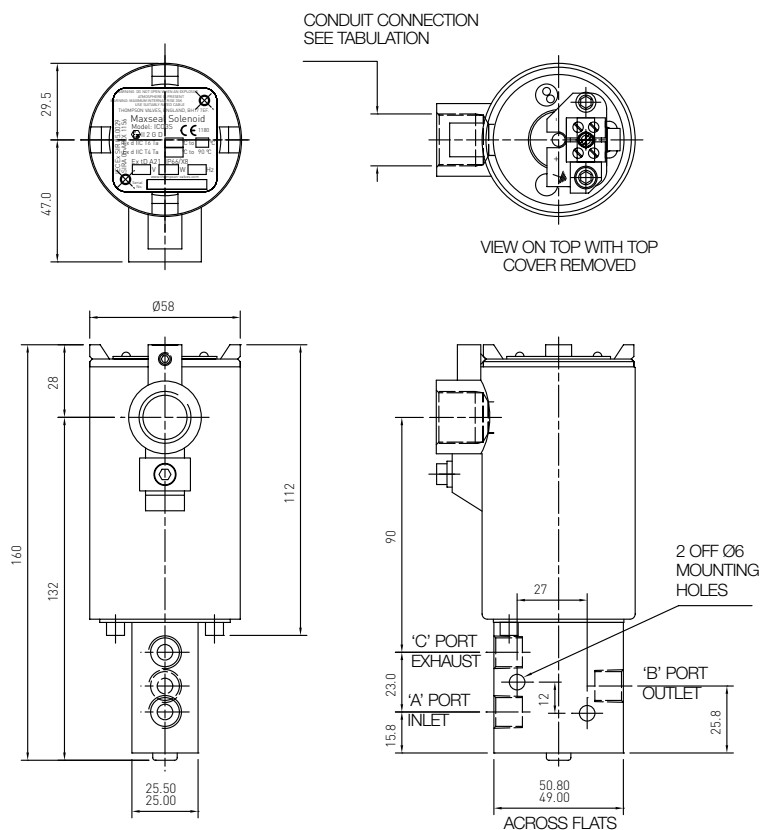
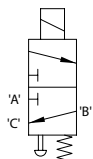
Valve part number breakdown

Model		Substitute		Body / trim materials		Substitute	
ICO3S Ex d		Y0		316 SS / 316 SS		S	
ICO3S Ex mbe		YZ		316L SS / 316L SS		T	
ICO3S Ex ia		YX					
Operating pressure		Substitute		Voltage		Substitute	
0-12 bar		1		24V DC		B	
Port config.		Substitute		50V DC		C	
3/2 UNIVERSAL		3		110V DC		D	
Operation		Substitute		125V DC		E	
Automatic		A		220 / 240V DC		F	
PBMO		C		24V AC		G	
PBMR		P		110V AC		J	
Process conn.		Substitute		220 / 240V AC		M	
1/4" NPT		A1		120V AC		T	
1/4" BSPP		E1		Conduit connection		Substitute	
				M20 x 1.5		1	
				1/2" NPT		2	
				Seat / seal materials		Substitute	
				Nitrile		H	
				FKM		V	

ICO3S 1/4" 3/2 PBMO



ICO3S 1/4" 3/2 PBMR



Certification T6 (Tamb = -55°C to +50°C (-67°F to +122°F)) & T4 (Max ambient +90°C (+194°F) or equipment must be used within 'T' class temp ranges shown.

EX II 2 GD - gas and dust environments.

Exd IIX - Exd protection, gas group IIC.

Atex certification SIRA 05ATEX1156, complies with ATEX directive 94/9/EC

IECEX certification IECEX SIR 05.0029

Safety integrity level SIL 3 or SIL 4 (SIL 4 in a redundant configuration only)

Protection IP66/X8, NEMA 4X

Technical features

Max. inlet pressure: 0-12 bar (0-174 psi)

Flow rates:

$C_v = 0.6$ USgpm for 1 psi Δp

$K_v = 8.7$ l/min for 1 bar (15 psi) Δp

Temperature ratings:

Media (min/max): -55°C/90°C (-67°F/194°F)

Ambient: must be used within 'T' class temperature ranges shown

Port size: 1/4"

Conduit / Signal Conns: M20 x 1.5mm ISO (F)

Media: Customer to specify and confirm compatibility

Weight: 2 kg

Materials:

Valve body & trim -

316L stainless steel

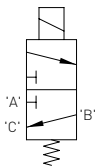
O-Rings seats & seals - nitrile

Paint finish - 316LSS coil housing - unpainted

Electrical information

Voltage (nominal)	24V DC	Pull-in Voltage	>= 87.5% of nominal
Voltage Protection	Surge suppression diodes fitted as STD	Coil Encapsulation	Class H
Leak Performance	Bubble tight at -50°C. <30cc/m at -55°C.	Coil Duty Cycle	100%

ICO3S 1/4" 3/2 12 BAR (174 PSI) AUTO - 90



3/2 universal

Process connections: NPT

Operation: Automatic

Response Times (Typ):

Pull-in: < 80 MS

Drop Out: < 60 MS

Drop-Out Voltage:

10 - 20% of nominal

Coil Rating: 190 ohms

Power Consumption:

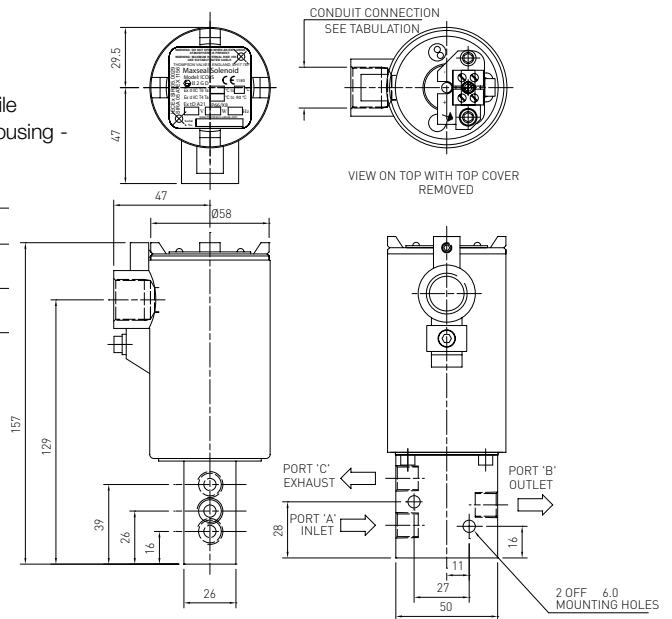
3 watts

Ordering information:

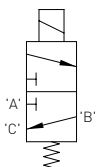
Quote: Y013AA1H1BS-90

Options: Body rotated through

90° of normal position



ICO3S 1/4" 3/2 12 BAR (174 PSI) AUTO - 180



3/2 universal

Process connections: NPT

Operation: Automatic

Response Times (Typ):

Pull-in: < 80 MS

Drop Out: < 60 MS

Drop-Out Voltage:

10 - 20% of nominal

Coil Rating: 190 ohms

Power Consumption:

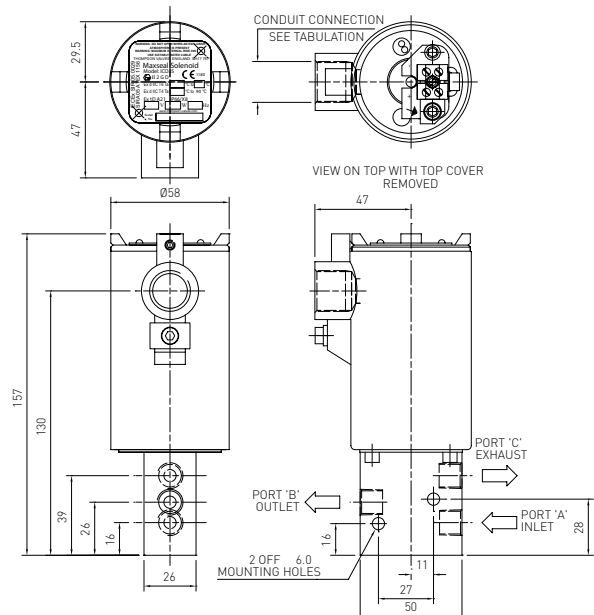
3 watts

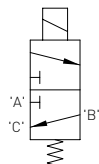
Ordering information:

Quote: Y013AA1H1BS-180

Options: Body rotated through

180deg (outlet under conduit)



ICO3S 1/4" 3/2 MANIFOLD MOUNT 12 BAR (174 PSI) AUTO**3/2 universal****Process connections:**

5mm drilled ports-flg MTD

Operation: Automatic**Response Times (Typ):**

Pull-in: < 80 MS

Drop Out: < 60 MS

Drop-Out Voltage:

10 - 20% of nominal

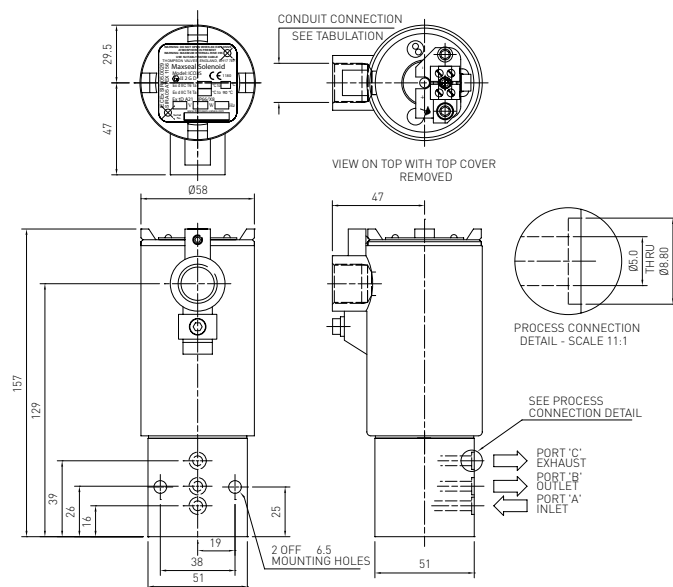
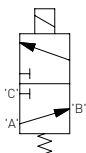
Coil Rating: 190 ohms**Power Consumption:**

3 watts

Ordering information:

Quote: Y013AKFH1BS

Options: Manifold mount

**ICO3S 1/4" 3/2 EX ia 12 BAR (174 PSI) AUTO****3/2 universal****Process connections:** NPT**Operation:** Automatic**Response Times (Typ):**

Pull-in: 3-4 sec

Drop Out: < 60 MS

Drop-Out Voltage:

10 - 20% of nominal

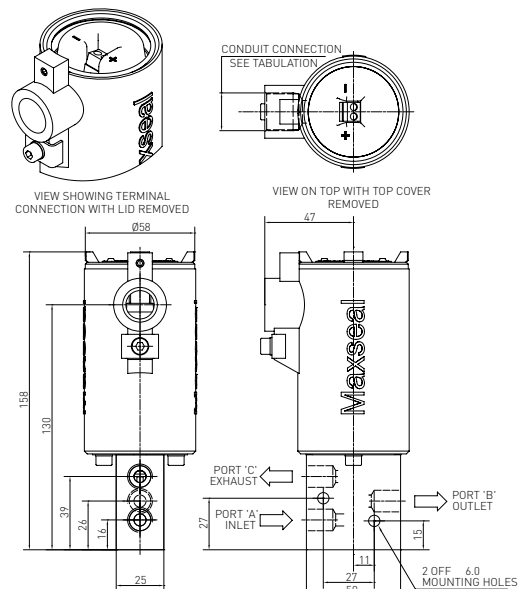
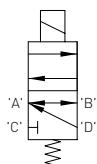
Coil Rating: 293 ohms**Power Consumption:**

0.43 watts

Ordering information:

Quote: YX13AA1H1BS

Options: None

**ICO3S 1/4" 3/2 NAMUR 12 BAR (174 PSI) AUTO****3/2 universal****Process connections:**

Namur mount with 1/4 NPT

Operation: Automatic**Response Times (Typ):**

Pull-in: < 80 MS

Drop Out: < 60 MS

Drop-Out Voltage:

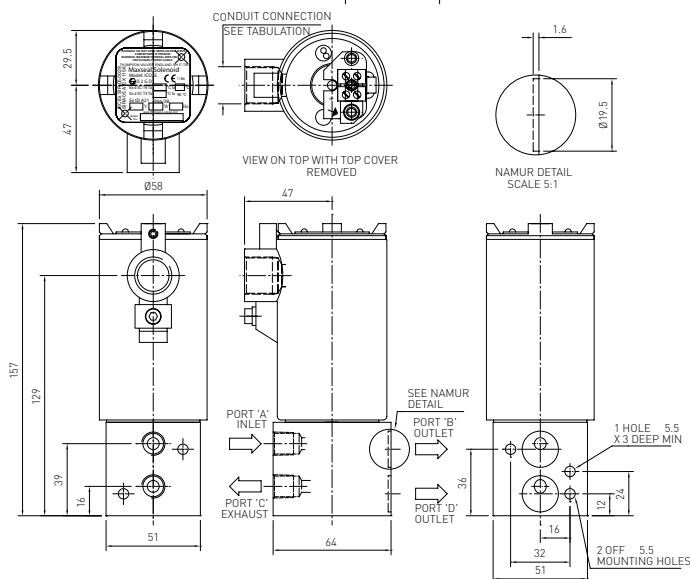
10 - 20% of nominal

Coil Rating: 190 ohms**Power Consumption:**

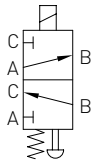
3 watts

Ordering information:

Quote: Y013ANAH1BS

Options: Namur mount
supplied with A4-70
mounting bolts and O-rings

ICO3S 1/4" 3/2 12 BAR (174 PSI) TPMR



3/2 fixed port configuration

Process connections:

NPT

Operation:

Tamperproof manual reset button

Response Times (Typ):

Pull-in: < 80 MS

Drop Out: < 60 MS

Drop-Out Voltage:

10 - 20% of nominal

Coil Rating:

190 ohms

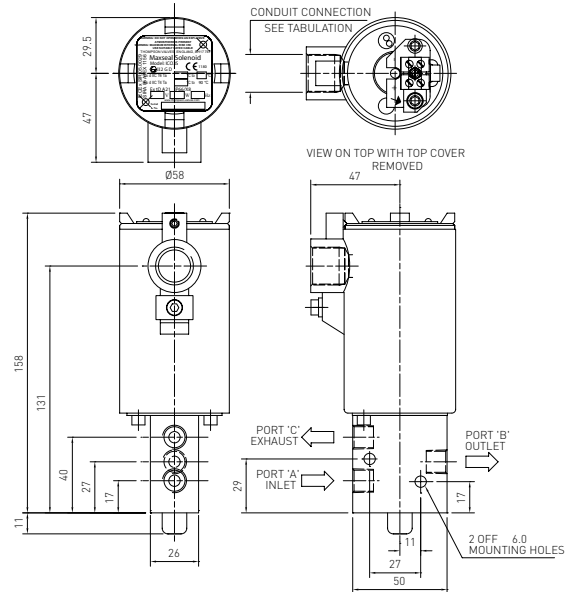
Power Consumption:

3 watts

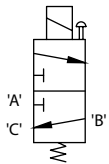
Ordering information:

Quote: Y013TA1H1BS

Options: None



ICO3S 1/4" 3/2 MANIFOLD MOUNT 12 BAR (174 PSI) PBMO



3/2 universal

Process connections:

5mm drilled ports-flg MTD

Operation:

Push button manual override

Response Times (Typ):

Pull-in: < 80 MS

Drop Out: < 60 MS

Drop-Out Voltage:

10 - 20% of nominal

Coil Rating: 190 ohms

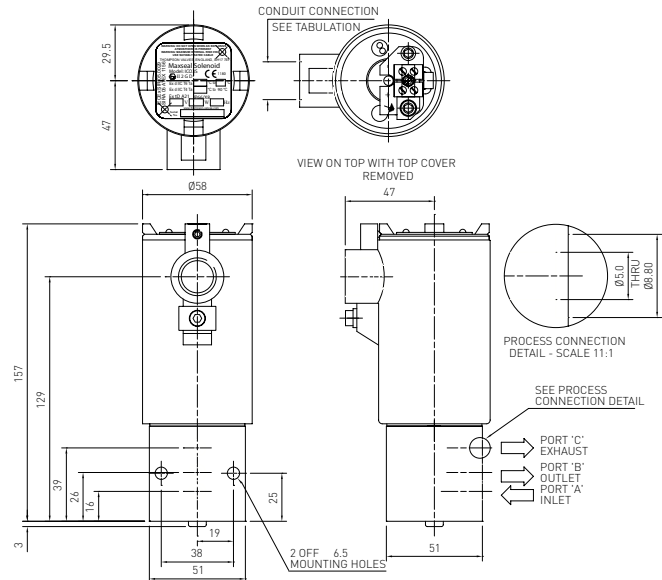
Power Consumption:

3 watts

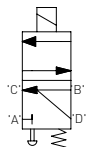
Ordering information:

Quote: Y013CKFH1BS

Options: Manifold mount



ICO3S 1/4" 3/2 NAMUR 12 BAR (174 PSI) PBMR



3/2 universal

Process connections:

Namur mount with 1/4 NPT

Operation:

Push button manual reset

Response Times (Typ):

Pull-in: < 80 MS

Drop Out: < 60 MS

Drop-Out Voltage:

10 - 20% of nominal

Coil Rating: 190 ohms

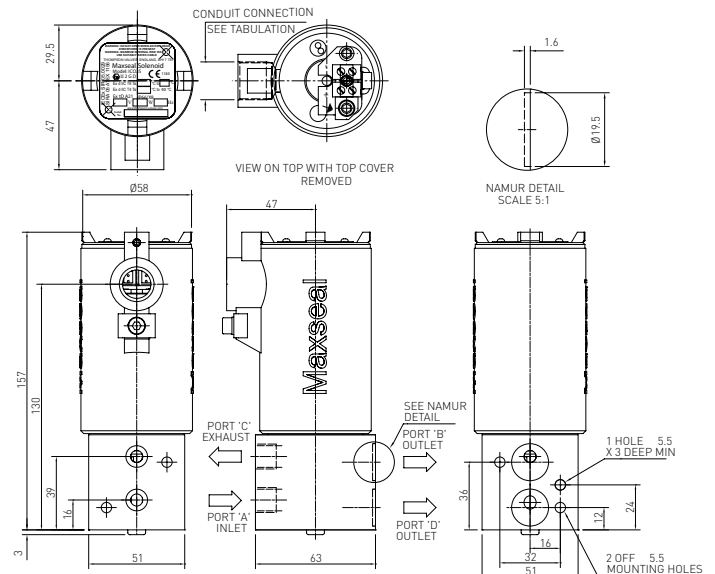
Power Consumption:

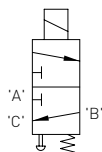
3 watts

Ordering information:

Quote: Y013PNAH1BS

Options: Namur mount supplied with A4-70 mounting bolts and O-rings



ICO3S 1/4" 3/2 MANIFOLD MOUNT 12 BAR (174 PSI) PBMR**3/2 universal****Process connections:**

5mm drilled ports-flg MTD

Operation:

Push button manual reset

Response Times (Typ):

Pull-in: < 80 MS

Drop Out: < 60 MS

Drop-Out Voltage:

10 - 20% of nominal

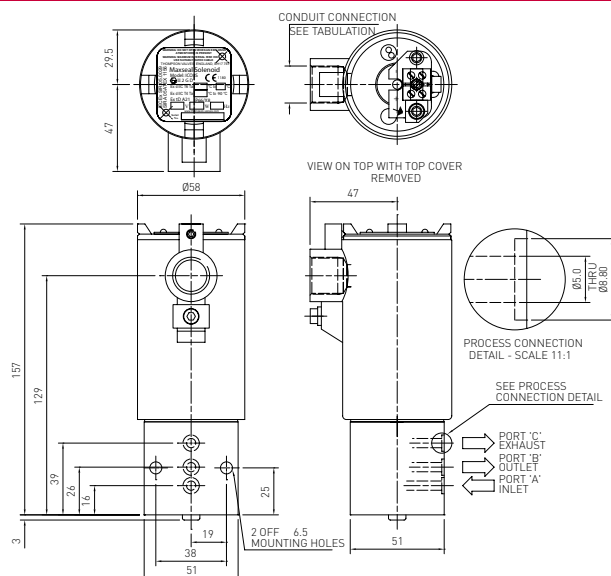
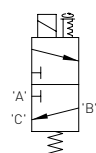
Coil Rating: 190 ohms**Power Consumption:**

3 watts

Ordering information:

Quote: Y013PKFH1BS

Options: Manifold mount

**ICO3S 1/4" 3/2 12 BAR (174 PSI) JSMO****3/2 universal****Process connections:**

NPT

Operation:

Jack screw manual override

Response Times (Typ):

Pull-in: < 80 MS

Drop Out: < 60 MS

Drop-Out Voltage:

10 - 20% of nominal

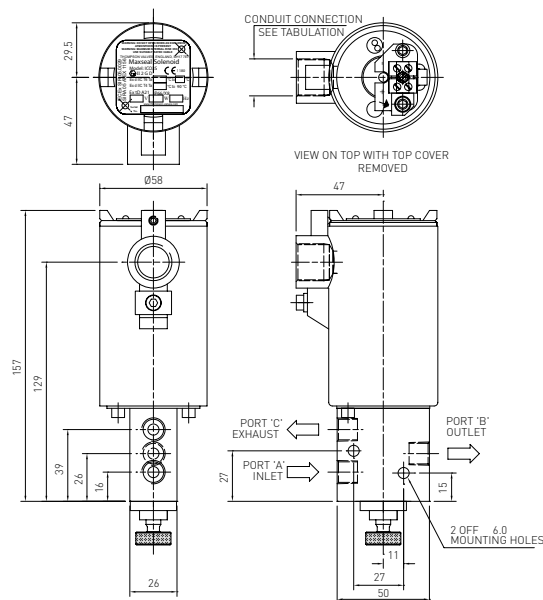
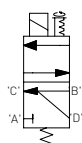
Coil Rating: 190 ohms**Power Consumption:**

3 watts

Ordering information:

Quote: Y013SA1H1BS

Options: None

**ICO3S 1/4" 3/2 NAMUR 12 BAR (174 PSI) JSMO****3/2 universal****Process connections:**

Namur mount with 1/4 NPT

Operation:

Jackscrew manual override

Response Times (Typ):

Pull-in: < 80 MS

Drop Out: < 60 MS

Drop-Out Voltage:

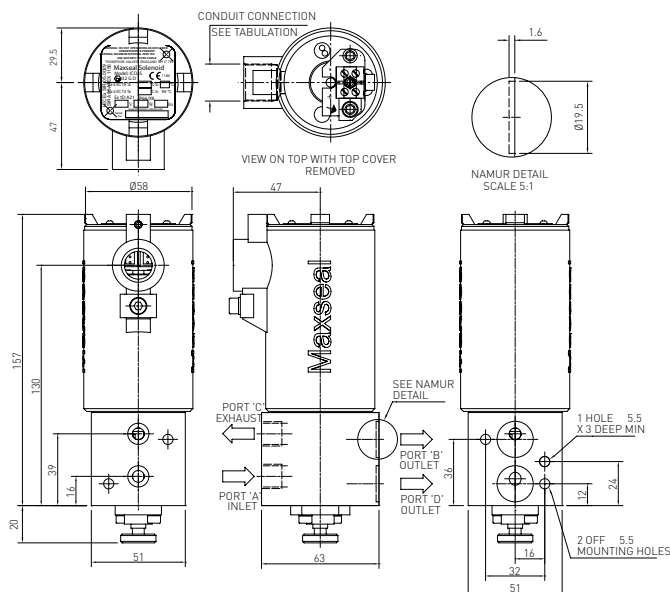
10 - 20% of nominal

Coil Rating: 190 ohms**Power Consumption:**

3 watts

Ordering information:

Quote: Y013SNAH1BS

Options: Namur mount
supplied with A4-70
mounting bolts and O-rings

5/2 fixed port configuration

Certification T6 (Tamb = -55°C to +50°C (-67°F to +122°F)) & **T4** (Max ambient +90°C (+194°F)) or equipment must be used within 'T' class temp ranges shown.

EX II 2 GD - gas and dust environments.

Exd protection, gas group **IIC**.

Atex certification SIRA 05ATEX1156, complies with **ATEX directive 94/9/EC**

IECEX certification IECEX SIR 05.0029

Safety integrity level SIL 3 or SIL 4 (SIL 4 in a redundant configuration only)

Protection IP66/X8, NEMA 4X



Technical features

Max. inlet pressure: 0-12 bar (0-174 psi)

Flow rates:

$C_v = 0.6$ USgpm for 1 psi Δp

$K_v = 8.7$ l/min for 1 bar (15 psi) Δp

Temperature ratings:

Media (min/max): -55°C/90°C (-67°F/194°F)

Ambient: must be used within 'T' class temperature ranges shown

Port size: 1/4"

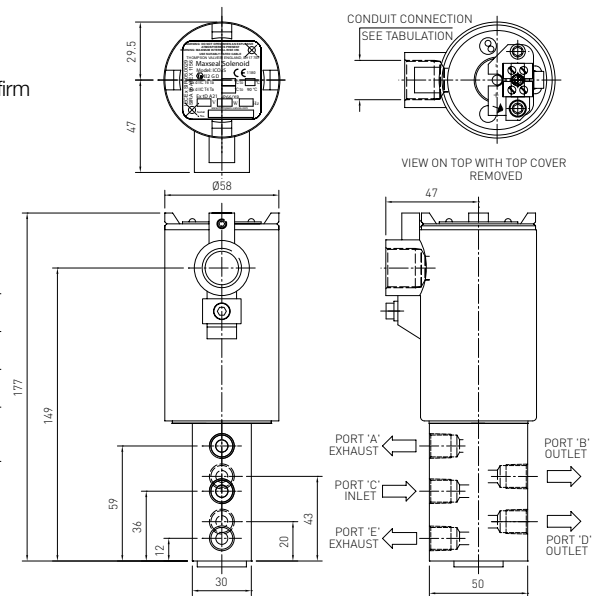
Conduit / Signal Conns:

M20 x 1.5mm ISO (F)

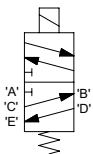
Media: Customer to specify and confirm compatibility

Electrical information

Voltage (nominal)	24V DC	Pull-in Voltage	>= 87.5% of nominal
Response Times (Typ)	Pull-in < 80 MS	Drop Out < 60 MS	Drop-Out Voltage 10 - 20% of nominal
Voltage Protection	Surge suppression diodes fitted as STD	Coil Encapsulation	Class H
Leak Performance	Bubble tight at -55 °C. <30cc/m at -55 °C.	Coil Duty Cycle	100%



ICO3S 1/4" 5/2 12 BAR (174 PSI) AUTO



Process connections:

NPT

Weight: 2.3 kg

Operation: Automatic

Coil Rating:

74 ohms

Power Consumption:

7.8 watts

Materials:

Valve body & trim - 316L

stainless steel

O-Rings seats & seals - nitrile

Paint finish - 316LSS coil

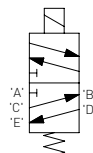
housing - unpainted

Ordering information:

Quote: Y015AA1H1BS

Options: None

ICO3S 1/4\"/>



Process connections:

Namur mount with 1/4 NPT

Weight: 2.3 kg

Operation: Automatic

Coil Rating:

74 ohms

Power Consumption:

7.8 watts

Materials:

Valve body & trim - 316L

stainless steel

O-Rings seats & seals - nitrile

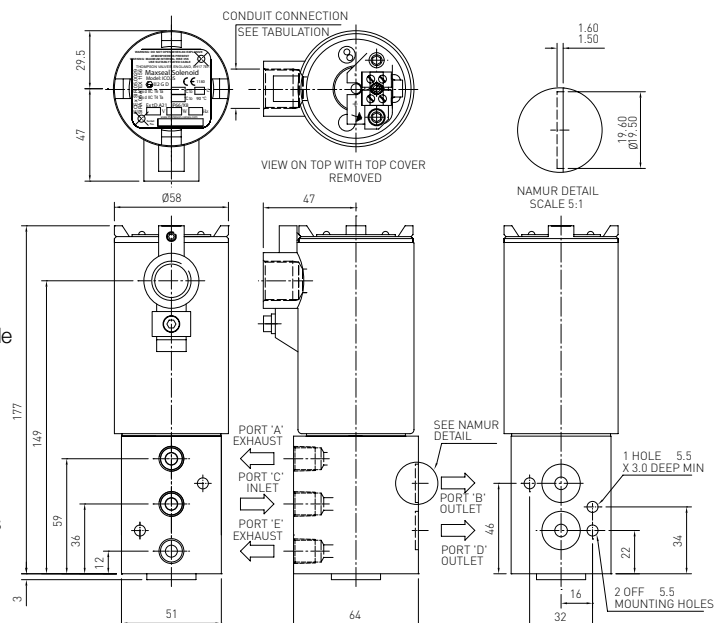
Paint finish - 316LSS coil

housing - unpainted

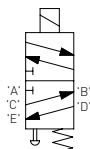
Ordering information:

Quote: Y015ANAH1BS

Options: Namur mount supplied with A4-70 mounting bolts and O-rings



ICO3S 1/4" 5/2 12 BAR (174 PSI) PBMO

**Process connections:**

NPT

Weight: 2.3 kg**Operation:** Push button manual override**Coil Rating:** 74 ohms**Power Consumption:**
7.8 watts**Materials:**

Valve body & trim - 316L

stainless steel

O-Rings seats & seals - FKM

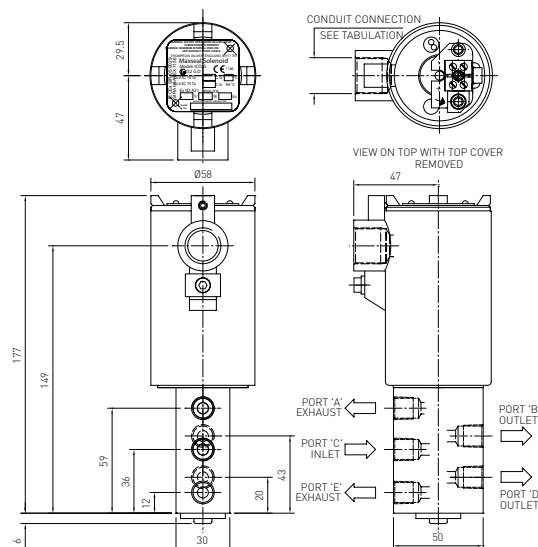
Paint finish - 316LSS coil

housing - unpainted

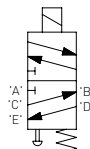
Ordering information:

Quote: Y015CA1V1BS

Options: None



ICO3S 1/4" 5/2 12 BAR (174 PSI) PBMR

**Process connections:**

NPT

Weight: 2.5 kg**Operation:** Push button manual reset**Coil Rating:** 293 ohms**Power Consumption:**
2 watts**Materials:**

Valve body & trim - 316L

stainless steel

O-Rings seats & seals - nitrile

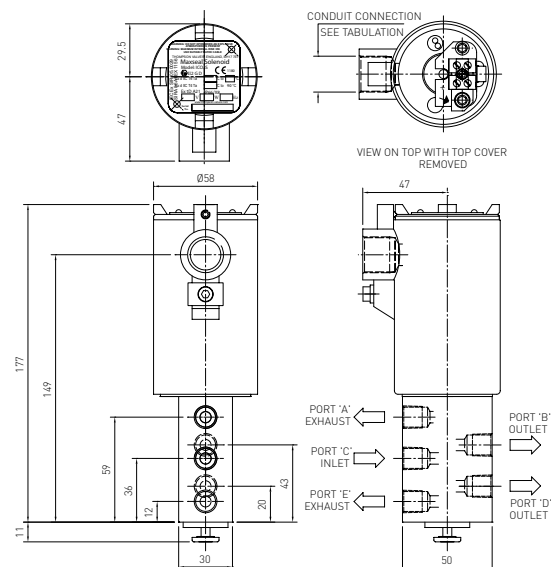
Paint finish - 316LSS coil

housing - unpainted

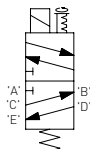
Ordering information:

Quote: Y015PA1H1BS

Options: None



ICO3S 1/4" 5/2 NAMUR 12 BAR (174 PSI) JSMO

**Process connections:**

Namur Mount With 1/4 NPT

Weight: 2.3 kg**Operation:** Jackscrew manual override**Coil Rating:**

74 ohms

Power Consumption:

7.8 watts

Materials:

Valve body & trim - 316L

stainless steel

O-Rings seats & seals - nitrile

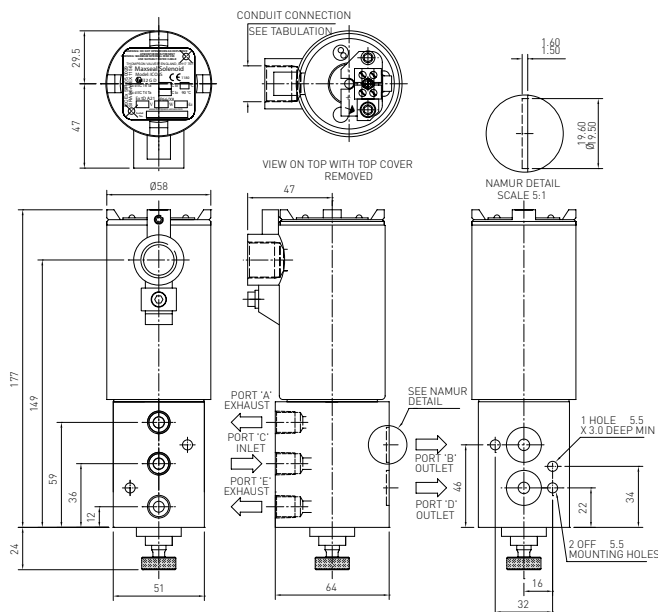
Paint finish - 316LSS coil

housing - unpainted

Ordering information:

Quote: Y015SNAH1BS

Options: None



2/2 energise to open (normally closed)

Certification T6 (Tamb = -55°C to +50°C (-67°F to +122°F)) & T4 (Max ambient +90°C (+194°F) or equipment must be used within 'T' class temp ranges shown.

EX II 2 GD - gas and dust environments.

Exd protection, gas group IIC.

Atex certification SIRA 05ATEX1156, complies with ATEX directive 94/9/EC

IECEX certification IECEX SIR 05.0029

Safety integrity level SIL 3 or SIL 4 (SIL 4 in a redundant configuration only)

Protection IP66/X8, NEMA 4X



Technical features

Max. inlet pressure: 0-12 bar (0-174 psi)

Flow rates:

$C_v = 2.1$ USgpm for 1 psi Δp

$K_v = 30.2$ l/min for 1 bar (15 psi) Δp

Temperature ratings:

Media (min/max): -55°C/90°C (-67°F/194°F)

Ambient: must be used within 'T' class temperature ranges shown

Port size: 1/2"

Process connections: NPT

Conduit / Signal Conns:

M20 x 1.5mm ISO (F)

Media: Customer to specify and confirm compatibility

Weight: 2.5 kg

Operation: Automatic

Materials

Valve body & trim - 316L stainless steel

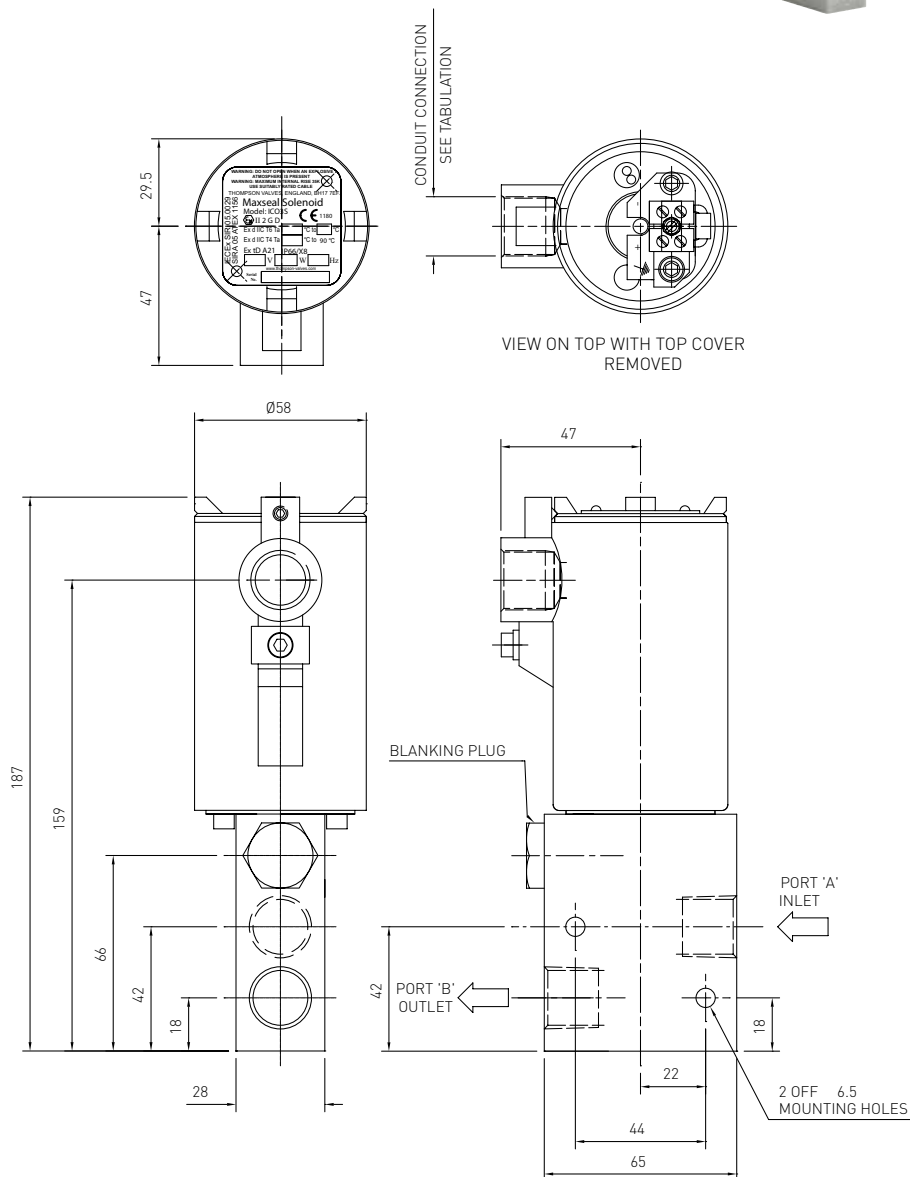
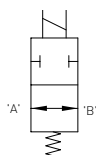
O-Rings seats & seals - nitrile

Paint finish - 316LSS coil housing - unpainted

Ordering information

Quote: Y011AA3H1BS

Options: None



Electrical information

Voltage (nominal)	24V DC				Pull-in Voltage	>= 87.5% of nominal
Response Times (Typ)	Pull-in	< 80 MS	Drop Out	< 60 MS	Drop-Out Voltage	10 - 20% of nominal
Coil Rating	74 ohms				Power Consumption	7.8 watts
Voltage Protection	Surge suppression diodes fitted as STD				Coil Encapsulation	Class H
Leak Performance	Bubble tight at -50 °C. <30cc/m at -55 °C.				Coil Duty Cycle	100%

3/2 universal

Certification T6 (Tamb = -55°C to +50°C (-67°F to +122°F)) & **T4** (Max ambient +90°C (+194°F)) or equipment must be used within 'T' class temp ranges shown.

EX II 2 GD - gas and dust environments.

Exd IIX - Exd protection, gas group IIC.

Atex certification SIRA 05ATEX1156, complies with ATEX directive 94/9/EC

IECEX certification IECEX SIR 05.0029

Safety integrity level SIL 3 or SIL 4 (SIL 4 in a redundant configuration only)

Protection IP66/X8, NEMA 4X

**Technical features****Max. inlet pressure:**

0-12 bar (0-174 psi)

Temperature ratings:

Media (min/max): -55°C/90°C
(-67°F/194°F)

Ambient: must be used within 'T'
class temperature ranges shown

Port size: 1/2"

Process connections: NPT

Conduit / Signal Conns:

M20 x 1.5mm ISO (F)

Media:

Customer to specify and confirm
compatibility

Materials

Valve body & trim - 316L stainless
steel

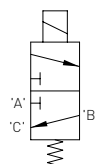
O-Rings seats & seals - nitrile

Paint finish - 316LSS coil housing

- unpainted

Electrical information

Voltage (nominal)	24V DC				Pull-in Voltage	>= 87.5% of nominal
Response Times (Typ)	Pull-in	< 80 MS	Drop Out	< 60 MS	Drop-Out Voltage	10 - 20% of nominal
Coil Rating	74 ohms				Power Consumption	7.8 watts
Voltage Protection	Surge suppression diodes fitted as STD				Coil Encapsulation	Class H
Leak Performance	Bubble tight at -50 °C. <30cc/m at -55 °C.				Coil Duty Cycle	100%

ICO3S 1/2" 3/2 12 BAR (174 PSI) AUTO**Flow rates:**

$C_v = 2.1$ USgpm for 1 psi Δp

$K_v = 30.2$ l/min for 1 bar (15 psi) Δp

Weight: 2.5 kg

Operation: Automatic

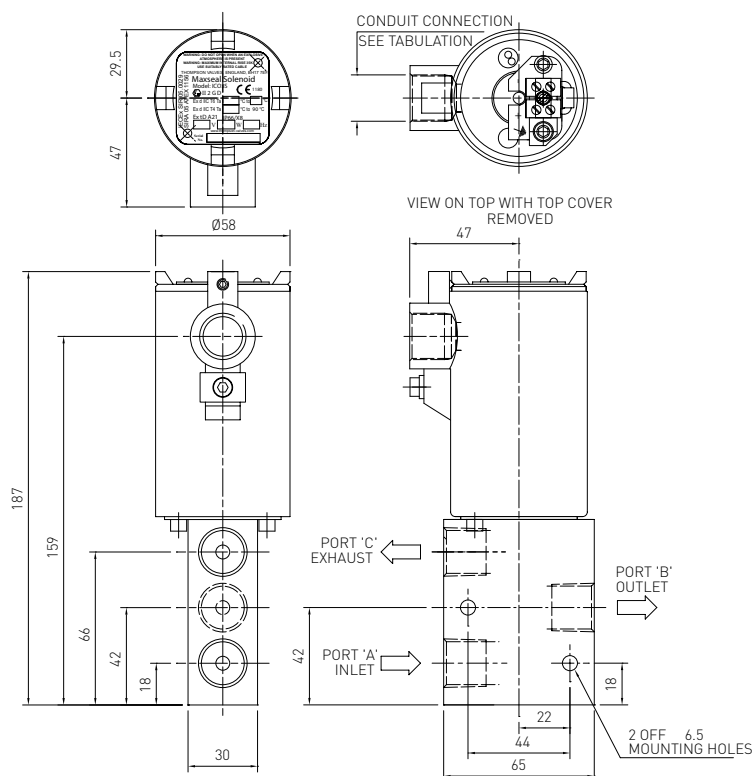
Coil Rating: 74 ohms

Power Consumption: 7.8 watts

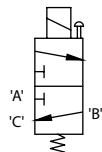
Ordering information:

Quote: Y013AA3H1BS

Options: None



ICO3S 1/2" 3/2 12 BAR (174 PSI) PBMO



Flow rates:

$C_v = 2.1$ USgpm for 1 psi Δp
 $K_v = 30.2$ l/min for 1 bar (15 psi) Δp

Weight: 2.5 kg

Operation:

Push button manual override

Coil Rating: 74 ohms

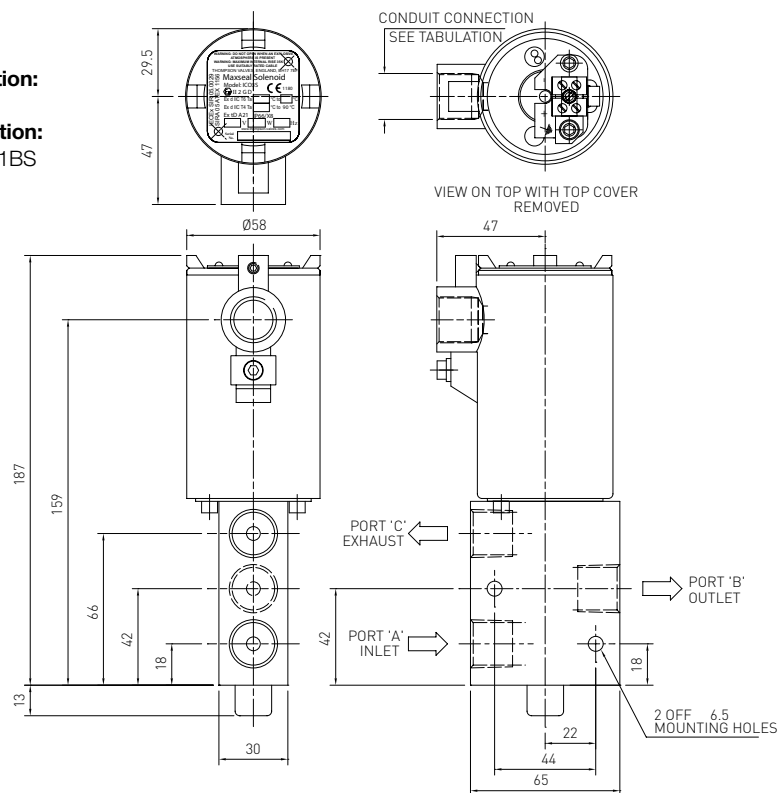
Power Consumption:

7.8 watts

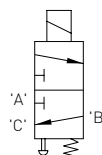
Ordering information:

Quote: Y013CA3H1BS

Options: None



ICO3S 1/2" 3/2 12 BAR (174 PSI) PBMR



Process connections:

NPT

2.8 kg

Operation:

Push button manual reset

Coil Rating: 190 ohms

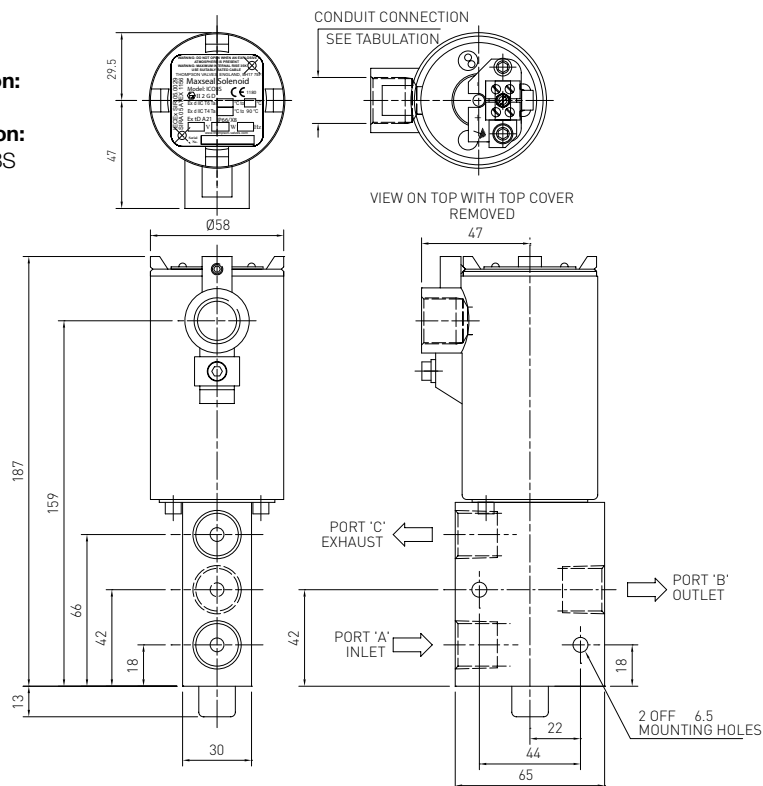
Power Consumption:

3 watts

Ordering information:

Quote: Y013PA3H1BS

Options: None



Direct acting solenoid valve**Low pressure, high flow****Max inlet pressure 20 bar (290 psi)****Reliable and long life, ideal for a one time installation****Control of pneumatic or hydraulic operated equipment****ATEX, CSA, GOST K & R, IECEX and NEMA 4X****Technical features****Maximum inlet pressure:**

20 bar (290 psi)

Temperature ratings:Media (min/max -60°C/90°C
(-76°F/194°F) Ambient (min/max
0°C/60°C (32°F/140°F))**Conduit connection:**M20 x 1.5 conduit thread,
1/2" NPT**Media:** Liquid & gases**Flow rates:** $C_v = 0.8$ USgpm for 1 psi Δp $K_v = 11.5$ l/min for 1 bar(15 psi) Δp **Valve size:**

1/4" balanced poppet valve

Process connections:

1/4" NPT, 1/2" BSP

Weight: 5 kg**Materials:**

Solenoid pot - stainless steel -

BFC 316

Top cover - stainless steel - BFC

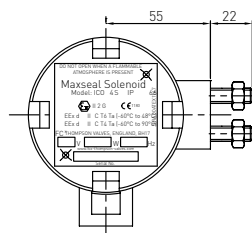
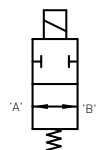
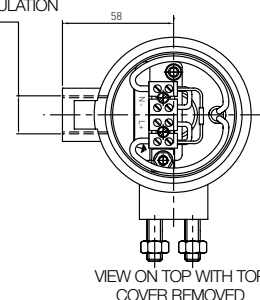
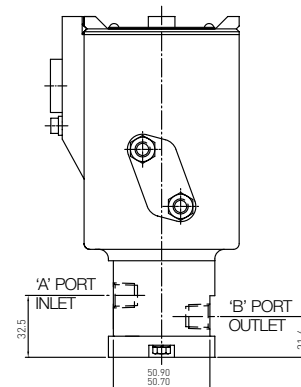
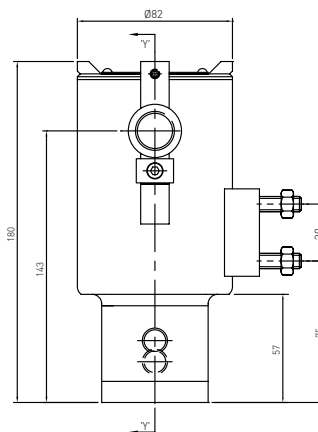
316

Valve body & trim materials -

316 stainless steel - 316L

stainless steel to the valve body
and trim materialsO-rings seats & seals -high nitrile
(NBR)

Coil insulation - class H

CONDUIT CONNECTION
SEE TABULATIONVIEW ON TOP WITH TOP
COVER REMOVED**Option selector**

Y12★A★★★★★

Model	Substitute	Body / trim materials	Substitute
ICO4S	Y1	316 SS / 316 SS	S
Operating pressure	Substitute	316L SS / 316L SS	T
0-20 bar	2	Voltage	Substitute
0-50 bar	3	18 / 33V DC	A
0-207 bar	6	24V DC	B
0-414 bar	9	50V DC	C
Port config.	Substitute	110V DC	D
2/2 ENG/OPEN	1	125V DC	E
2/2 ENG/CLOSE	2	25V AC	G
Operation	Substitute	110V AC	J
Automatic	A	240V AC	M
Process conn.	Substitute	115V DC	R
1/4" NPT	A1	Conduit connection	Substitute
1/4" BSPP	E1	M20 x 1.5	1
		1/2" NPT	2
		Seat / seal materials	Substitute
		High nitrile	H
		FKM	V
		FLUROSILICONE	F

Model: ICO4S 1/4" 3/2 UNI**Direct acting solenoid valve****Low pressure, high flow****Max inlet pressure 20 bar (290 psi)****Reliable and long life, ideal for a one time installation****Control of pneumatic or hydraulic operated equipment****ATEX, CSA, GOST K & R, IECEX and NEMA 4X****Technical features****Maximum inlet pressure:**

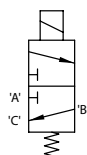
20 bar (290 psi)

Flow rates: $C_v = 0.8$ USgpm for 1 psi Δp $K_v = 11.5$ l/min for 1 bar (15 psi) Δp **Process connections: NPT****Conduit connection:**

M20 x 1.5 conduit thread

Media:

Customer to specify and confirm compatibility

ICO4S 1/4" 3/2 20 BAR (290 PSI) AUTO**Temperature ratings:**

Media (min/max -20°C/90°C (-4°F/194°F) Ambient (min/max 0°C/60°C (32°F/140°F))

Valve size:

1/4" balanced poppet valve

Weight: 5.5 kg**Materials:**

Solenoid pot - stainless steel

- BFC 316

Top cover - stainless steel -

BFC 316

Valve body & trim materials -

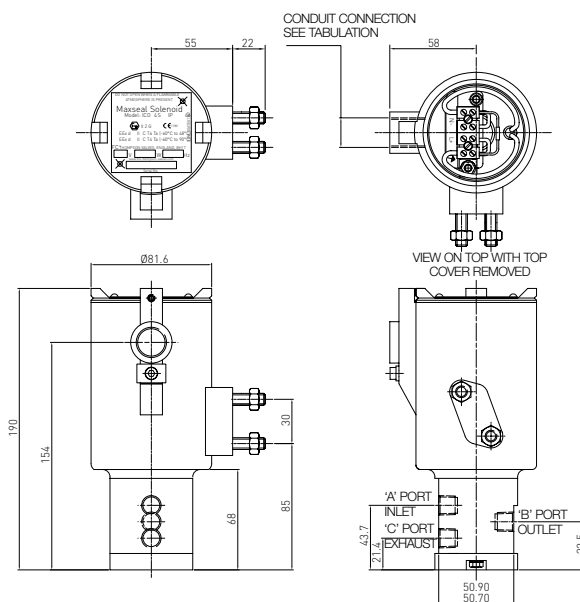
316 stainless steel - 316L

stainless steel to the valve

body and trim materials

O-rings seats & seals -high nitrile (NBR)

Coil insulation - class H

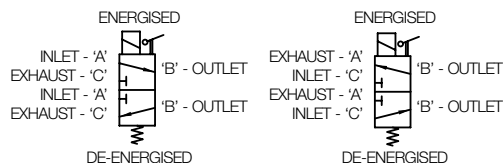


Profile and dimensions mm

Option selector**Y123*******

Model	Substitute	Body / trim materials	Substitute
ICO4S	Y1	316 SS / 316 SS	S
Operating pressure	Substitute	316L SS / 316L SS	T
0-20 bar	2	Voltage	Substitute
Port config.	Substitute	18 / 33V DC	A
3/2 UNIVERSAL	3	24V DC	B
Operation	Substitute	50V DC	C
Automatic	A	25V AC	G
Automatic latching lever	B	110V AC	J
Push button manual override	C	240V AC	M
Push button manual reset	P	115V DC	R
Jack screw manual overrides	S	Conduit connection	Substitute
Tamperproof manual reset button	T	M20 x 1.5	1
Process conn.	Substitute	1/2" NPT	2
1/4" NPT	A1		
1/4" BSPP	E1		
Seat / seal materials	Substitute		
High nitrile	H		
Viton®	V		

ICO4S 1/4" 3/2 20 BAR (290 PSI) A-L-L



Temperature ratings:

Media (min/max -20°C/90°C
 (-4°F/194°F) Ambient (min/
 max 0°C/60°C (32°F/140°F))

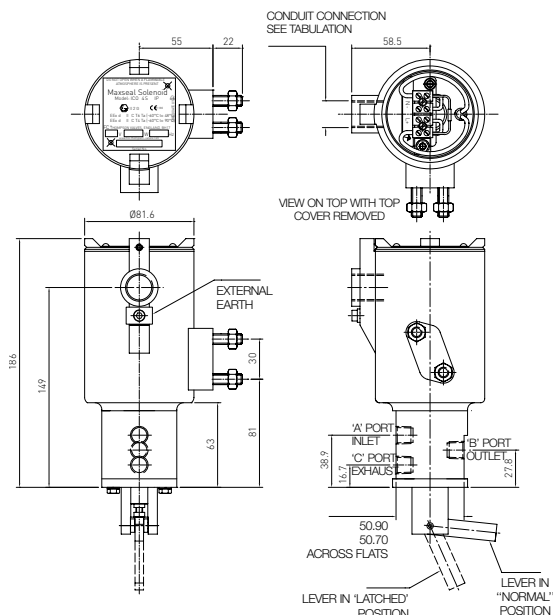
Valve size:

1/4" balanced poppet valve

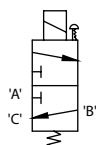
Weight: 5.5 kg

Materials:

Solenoid pot - stainless
 steel - BFC 316
 Top cover - stainless steel -
 BFC 316
 Valve body & trim materials -
 316 stainless steel - 316L
 stainless steel to the valve
 body and trim materials
 O-rings seats & seals -high
 nitrile (NBR)
 Seats - nylon 66
 Coil insulation - class H



ICO4S 1/4" 3/2 20 BAR (290 PSI) JSMO



Temperature ratings:

Media (min/max -20°C/90°C
 (-4°F/194°F) Ambient (min/
 max 0°C/60°C (32°F/140°F))

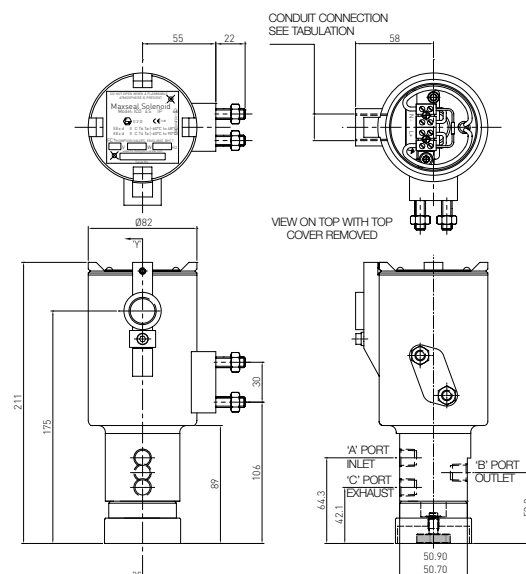
Valve size:

1/4" balanced poppet valve

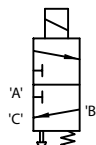
Weight: 6 kg

Materials:

Solenoid pot - stainless
 steel - BFC 316
 Top cover - stainless steel -
 BFC 316
 Valve body & trim materials -
 316 stainless steel - 316L
 stainless steel to the valve
 body and trim materials
 O-rings seats & seals -high
 nitrile (NBR)
 Coil insulation - class H



ICO4S 1/4" 3/2 20 BAR (290 PSI) PBMR



Temperature ratings:

Media (min/max -20°C/90°C
 (-4°F/194°F) Ambient (min/
 max 0°C/60°C (32°F/140°F))

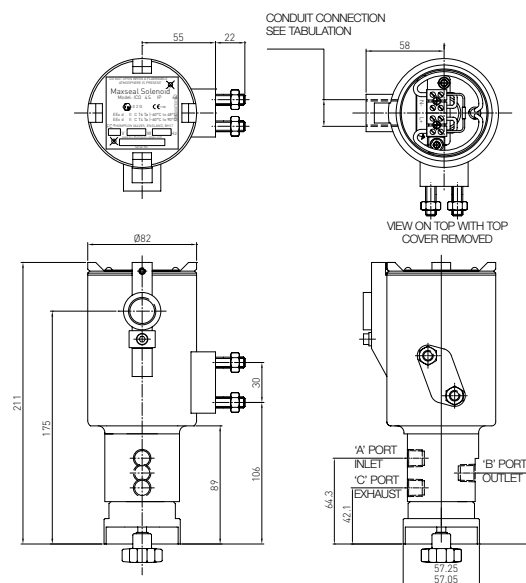
Valve size:

1/4" balanced poppet valve

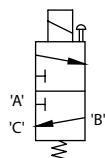
Weight: 5.5 kg

Materials:

Solenoid pot - stainless
 steel - BFC 316
 Top cover - stainless steel -
 BFC 316
 Valve body & trim materials -
 316 stainless steel - 316L
 stainless steel to the valve
 body and trim materials
 O-rings seats & seals -high
 nitrile (NBR)
 Coil insulation - class H

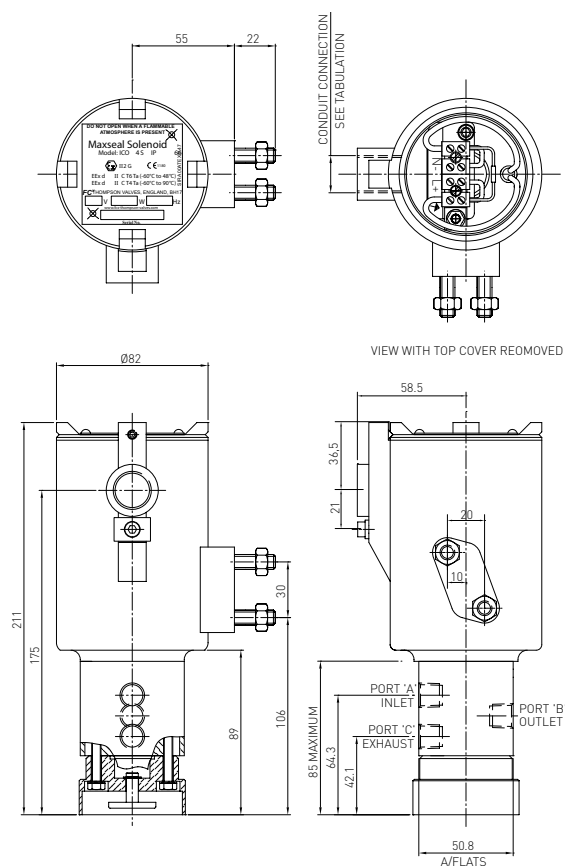


ICO4S 1/4" 3/2 20 BAR (290 PSI) PBMO

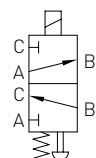
**Temperature ratings:**Media (min/max):
-20°C/90°C (-4°F/194°F)Ambient: must be used
within 'T' class temperature
ranges shown**Weight:** 5 kg**Materials:**Valve body & trim - 316L
stainless steelO-Rings seats & seals - high
nitrilePaint finish - stainless steel
coil housing - unpainted

Electrical information

Voltage (nominal)	24V DC
Response Times (Typ)	Pull-in < 150 MS Drop Out < 80 MS
Coil Rating	125 ohms
Voltage Protection	Surge suppression diodes fitted as STD
Leak Performance	Bubble tight
Pull-in Voltage	>= 87.5% of nominal
Drop-Out Voltage	10 - 20% of nominal
Power Consumption	4.5 watts
Coil Encapsulation	Class H
Coil Duty Cycle	100%

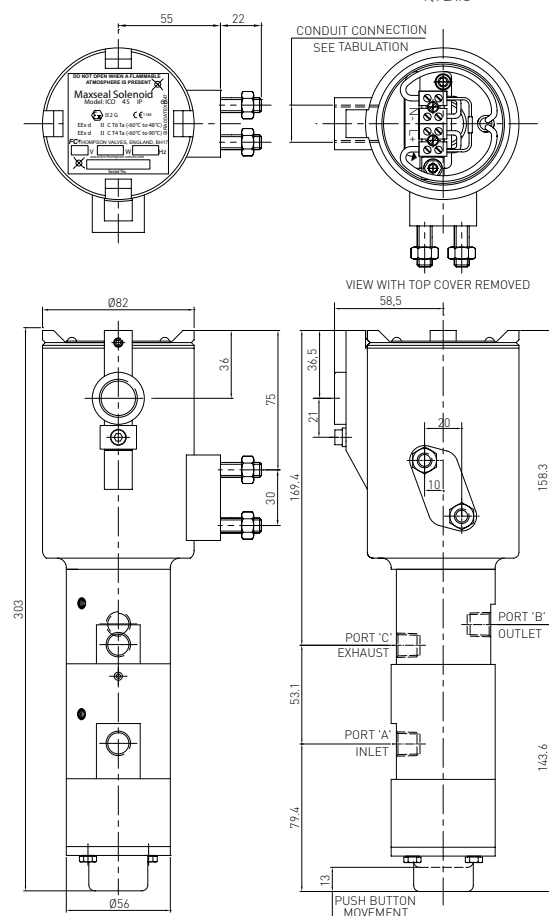


ICO4S 1/4" 3/2 20 BAR (290 PSI) TPMR

**Temperature ratings:**Media (min/max):
-20°C/120°C (-4°F/248°F)Ambient: must be used
within 'T' class temperature
ranges shown**Weight:** 6.5 kg**Materials:**Valve body & trim - 316L
stainless steelO-Rings seats & seals - high
nitrilePaint finish - stainless steel
coil housing - unpainted

Electrical information

Voltage (nominal)	24V DC
Response Times (Typ)	Pull-in < 150 MS Drop Out < 80 MS
Coil Rating	125 ohms
Voltage Protection	Surge suppression diodes fitted as STD
Leak Performance	Bubble tight
Pull-in Voltage	>= 87.5% of nominal
Drop-Out Voltage	10 - 20% of nominal
Power Consumption	4.5 watts
Coil Encapsulation	Class H
Coil Duty Cycle	100%



ICO4S
1/4" 3/2 VALVE
20 BAR, EXTREME SERVICE/ HIGH TEMP.



Certification EExd IIC T6 (Tamb = -60°C to +48°C (-76°F to +118°F))
or EExd IIC T4 (Tamb = -60°C to +90°C (-76°F to +194°F)).

Complies with EN 50014:1997 (amendments 1 & 2) and EN 50018:1994.

Atex certification SIRA 00ATEX1147, complies with ATEX directive 94/9/EC

IECEX certification IECEX BAS 04.0019, complies with IEC 60079-0:2000
& IEC 60079-1:2001

SIL 3 or SIL 4 (SIL 4 in a redundant configuration only)

Protection IP66/X8, NEMA 4X



Technical features

Max. inlet pressure:

0-20 bar (0-290 psi)

Flow rates:

$C_v = 0.8$ USgpm for 1 psi Δp

$K_v = 11.5$ l/min for 1 bar (15 psi) Δp

Port size: 1/4"

Process connections: NPT

Conduit / Signal Conns:

M20 x 1.5mm ISO (F)

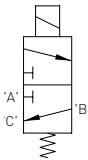
Media:

Customer to specify and confirm compatibility

Electrical information

Voltage (nominal)	24V DC				Pull-in Voltage	>= 87.5% of nominal
Response Times (Typ)	Pull-in	< 150 MS	Drop Out	< 80 MS	Drop-Out Voltage	10 - 20% of nominal
Voltage Protection	Surge suppression diodes fitted as STD				Coil Encapsulation	Class H
Leak Performance	Bubble tight				Coil Duty Cycle	100%

ICO4S 1/4" 3/2 20 BAR (290 PSI) IN AUTO EXTREME SERVICE



Temperature ratings:

Media (min/max):
 -20°C/90°C (-4°F/194°F)

Ambient: must be used within 'T' class temperature ranges shown

Coil Rating:

60 ohms

Power Consumption:

9.5 watts

Weight: 5.5 kg

Operation: Automatic

Materials:

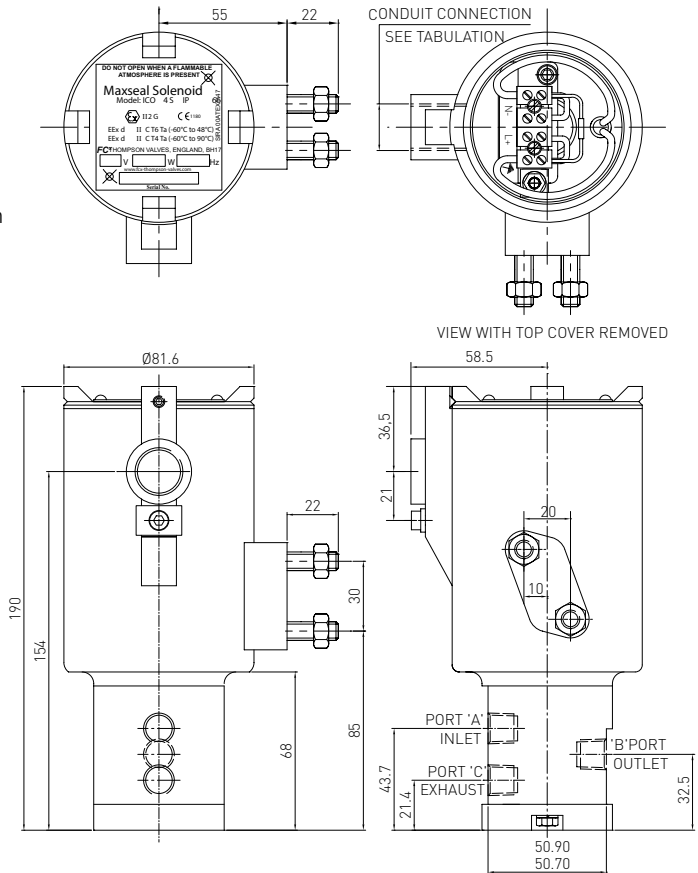
Valve body & trim - titanium
 O-Rings seats & seals - high nitrile

Paint finish - stainless steel
 coil housing - unpainted

Ordering information:

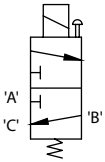
Quote: Y123AA1H1B3003

Options: Extreme service
 (9.6 Watts)



Profile and dimensions mm

ICO4S 1/4" 3/2 20 BAR (290 PSI) EXTREME SERVICE PBMO



Temperature ratings:

Media (min/max):
 -20°C/90°C (-4°F/194°F)

Ambient: must be used
 within 'T' class temperature
 ranges shown

Coil Rating:

60 ohms

Power Consumption:

9.6 watts

Weight: 5 kg

Operation:

Push button manual override

Materials:

Valve body & trim -

aluminium bronze

O-Rings seats & seals -

high nitrile

Paint finish - stainless steel

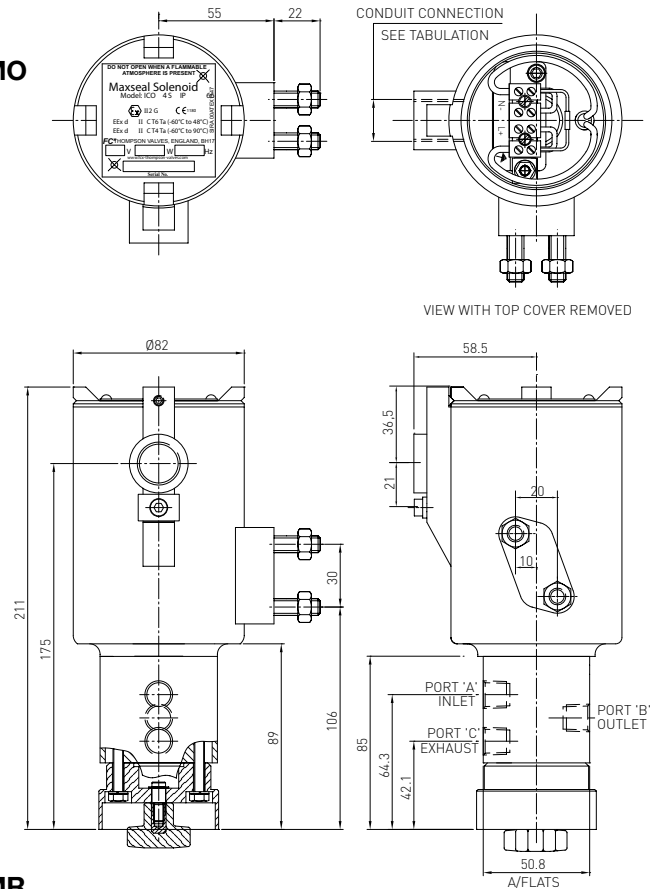
coil housing - unpainted

Ordering information:

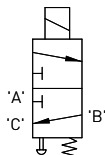
Quote: Y123CA1H1BM003

Options: Extreme service

(9.6 watts)



ICO4S 1/4" 3/2 20 BAR (290 PSI) EXTREME SERVICE PBMR



Temperature ratings:

Media (min/max):
 -50°C/50°C (-58°F/122°F)

Ambient: must be used
 within 'T' class temperature
 ranges shown

Coil Rating:

1500 ohms

Power Consumption:

8 watts

Weight: 5 kg

Operation:

Push button manual reset

Materials:

Valve body & trim - 316L

stainless steel

O-Rings seats - low nitrile

O-Rings seals -

fluorosilicone

Paint finish - stainless steel

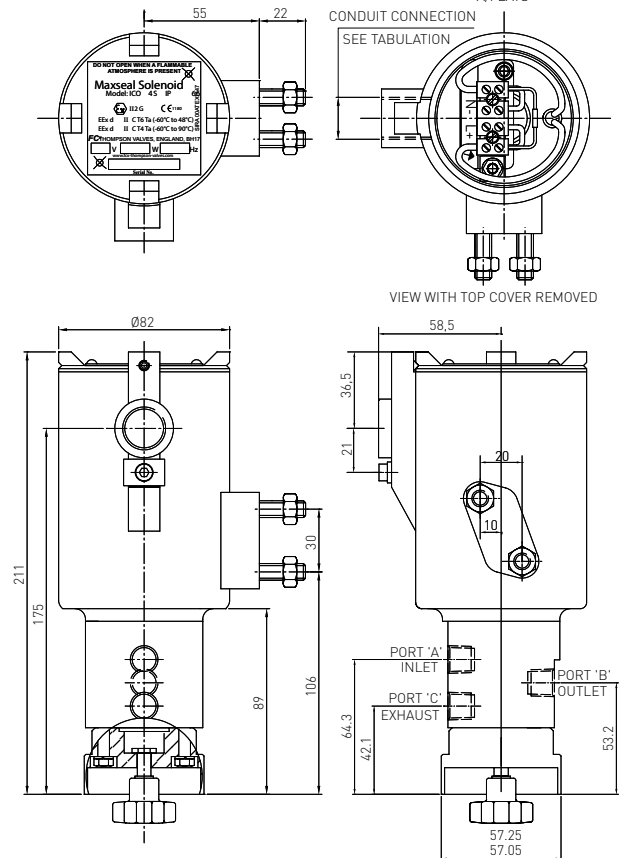
coil housing - unpainted

Ordering information:

Quote: Y123PA1L1DS003

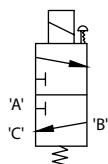
Options: Extreme service

valve



Profile and dimensions mm

ICO4S 1/4" 3/2 20 BAR (290 PSI) EXTREME SERVICE JSMO

**Temperature ratings:**

Media (min/max):

-20°C/90°C (-4°F/194°F)

Ambient: must be used

within 'T' class temperature ranges shown

Coil Rating:

60 ohms

Power Consumption:

9.6 watts

Weight:

7 kg

Operation:

Jackscrew manual override

Materials:

Valve body & trim -

aluminium bronze

O-Rings seats & seals -

high nitrile

Paint finish - stainless steel

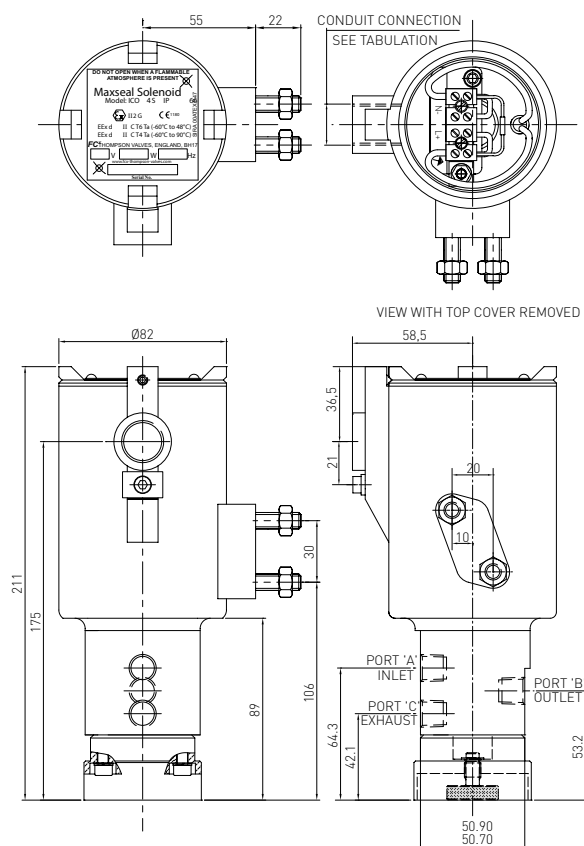
coil housing - unpainted

Ordering information:

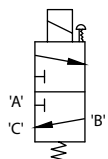
Quote: Y123SA1H1BM003

Options: Extreme service

(9.6 watts)



ICO4S 1/4" 3/2 20 BAR (290 PSI) HIGH TEMP SPACER JSMO

**Temperature ratings:**

Media (min/max):

-20°C/90°C (-4°F/194°F)

Ambient: must be used

within 'T' class temperature ranges shown

Coil Rating:

60 ohms

Power Consumption:

9.6 watts

Weight:

7 kg

Operation:

Jackscrew manual override

Materials:

Valve body & trim -

aluminium bronze

O-Rings seats & seals -

high nitrile

Paint finish - stainless steel

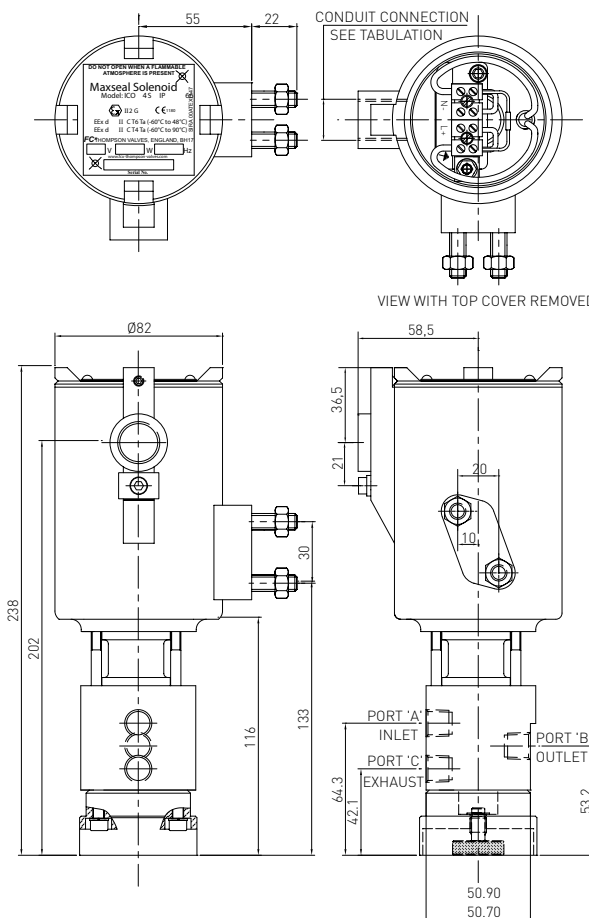
coil housing - unpainted

Ordering information:

Quote: Y123SA1H1BM003

Options: Extreme service

(9.6 watts)



Model: ICO4S 1/4" 3/2 UNI
Direct acting solenoid valve
Low pressure, high flow
Max inlet pressure 50 bar (725 psi)
Reliable and long life, ideal for a one time installation
Control of pneumatic or hydraulic operated equipment
ATEX, CSA, GOST K & R, IECEX and NEMA 4X

Technical features

Maximum inlet pressure: 50 bar (725 psi)

Flow rates:

$C_v = 0.6$ USgpm for 1 psi Δp
 $K_v = 8.64$ l/min for 1 bar (15 psi) Δp

Temperature ratings:

Media (min/max -20°C/90°C (-4°F/194°F))
Ambient (min/max 0°C/60°C (32°F/140°F))

Valve size: 1/4" balanced poppet valve

Process connections:

1/4" NPT, 1/2" BSP

Conduit connection:

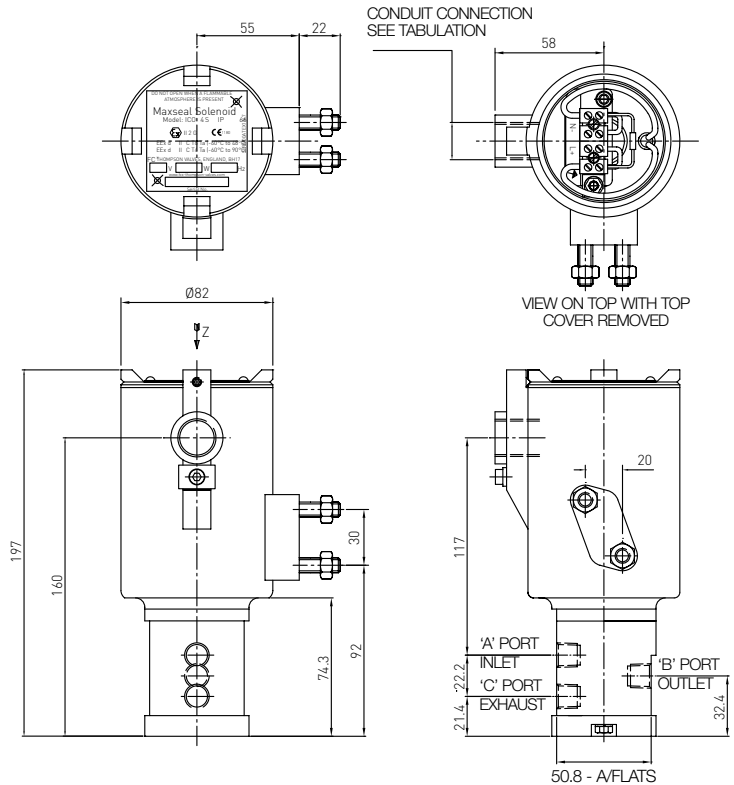
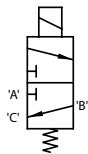
M20 x 1.5 conduit thread,
1/2" NPT

Media: Liquid & gases

Weight: 5.5 kg

Materials:

Solenoid pot - stainless steel - BFC 316
Top cover - stainless steel - BFC 316
Valve body & trim materials -
316 stainless steel - 316L stainless steel to
the valve body and trim materials
O-rings seats & seals -high nitrile (NBR)
Coil insulation - class H



Option selector

Y133A★★★★★

Model	Substitute	Body / trim materials	Substitute
ICO4S	Y1	316 SS / 316 SS	S
Operating pressure	Substitute	316L SS / 316L SS	T
0-50 bar)	3	Voltage	Substitute
Port config.	Substitute	18 / 33V DC	A
3/2 UNIVERSAL	3	24V DC	B
Operation	Substitute	50V DC	C
Automatic	A	25V AC	G
Process conn.	Substitute	110V AC	J
1/4" NPT	A1	240V AC	M
1/4" BSPP	E1	115V DC	R
Seat / seal materials	Substitute	Conduit connection	Substitute
High nitrile	H	M20 x 1.5	1
Viton®	V	1/2" NPT	2

Direct acting solenoid valve**High pressure****Reliable and long life, ideal for a one time installation****Control of pneumatic or hydraulic operated equipment****ATEX, CSA, GOST K & R, IECEX and NEMA 4X****Technical features****Maximum inlet pressure:**

207 bar (3002 psi)

Flow rates: $C_v = 0.28$ USgpm for 1 psi Δp $K_v = 4.03$ l/min for 1 bar(15 psi) Δp **Temperature ratings:**

Media (min/max -20°C/90°C

(-4°F/194°F) Ambient (min/max

0°C/60°C (32°F/140°F))

Valve size:

1/4" balanced poppet valve

Process connections:

1/4" NPT, 1/2" BSP

Conduit connection:

M20 x 1.5 conduit thread,

1/2" NPT

Media: Liquid & gases**Weight:** 5.5 kg**Materials:**

Solenoid pot - stainless steel - BFC 316

Top cover - stainless steel - BFC 316

Valve body & trim materials -

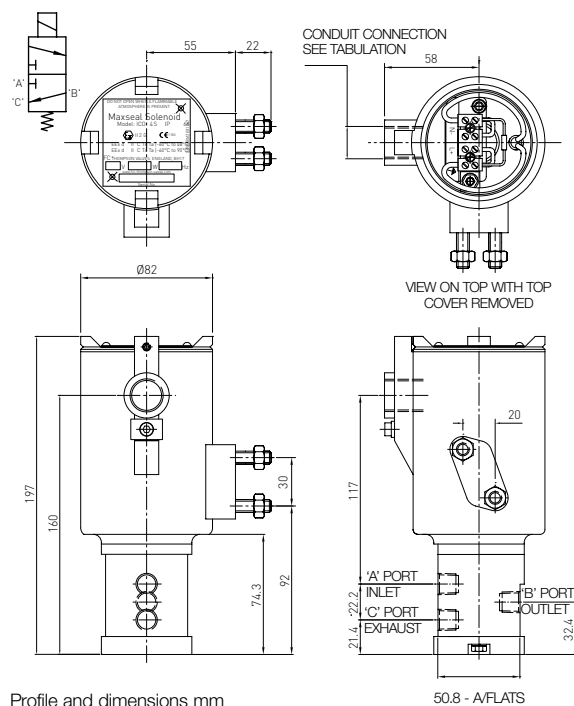
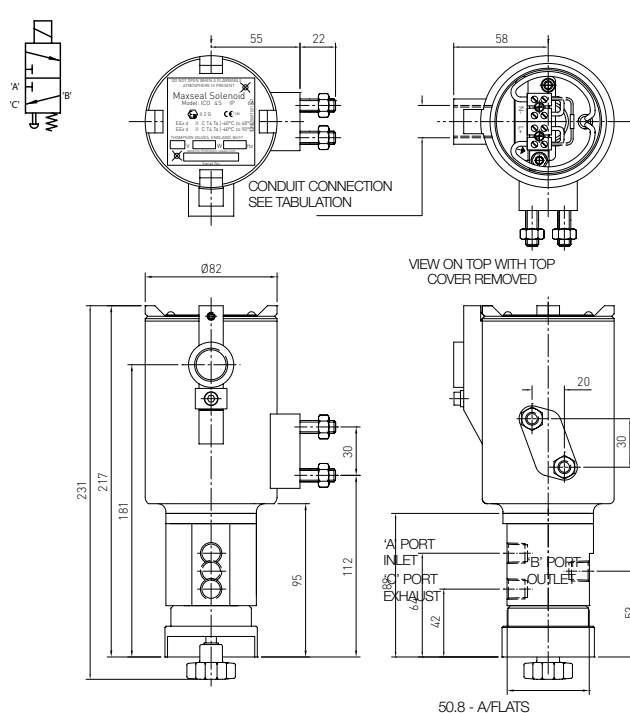
316 stainless steel - 316L stainless steel to

the valve body and trim materials

O-rings seals - high nitrile (NBR)

Seats - nylon 66

Coil insulation - class H

**ICO4S 1/4" 3/2 207 BAR (3002 PSI) AUTO****ICO4S 1/4" 3/2 207 BAR (3002 PSI) PBMR****Option selector****Y163★★★★★S**

Model ICO4S	Substitute Y1	Body / trim materials 316 SS / 316 SS	Substitute S
Operating pressure 0-207 bar (3000 psi)	Substitute 6	316L SS / 316L SS	T
Port config. 3/2 UNIVERSAL	Substitute 3	Voltage 18 / 33V DC	Substitute A
Operation Automatic	Substitute A	24V DC	B
Push button manual	P	50V DC	C
Process conn. 1/4" NPT	Substitute A1	110V DC	D
1/4" BSPP	E1	125V DC	E
Seat / seal materials Nylon / high nitrile	Substitute J	25V AC	G
Nylon / viton®	K	110V AC	J
		240V AC	M
		Conduit connection M20 x 1.5	Substitute 1
		1/2" NPT	2

Model ICO4S 1/4" 3/2 UNI

Direct acting solenoid valve

High flow

Max inlet pressure 414 bar (6005 psi)

A direct acting solenoid operated valve for the control of pneumatic or hydraulic operated equipment

Reliable and long life, ideal for a one time installation

ATEX, CSA, GOST K & R, IECEX and NEMA 4X

Technical features

Maximum inlet pressure:

0 - 414 bar (0 - 6005 psi) - hydraulic/
0 - 300 bar (0 - 4351 psi) - gas

Flow rates:

$C_v = 0.28$ USgpm for 1 psi Δp
 $K_v = 4.03$ l/min for 1 bar (15 psi) Δp

Temperature ratings:

Media (min/max -20°C/90°C
(-4°F/194°F) Ambient (min/max
-50°C/60°C (-58°F/140°F))

Valve size:

1/4" poppet valve

Process connections:

1/4" NPT, 1/2" BSP

Conduit connection:

M20 x 1.5 conduit thread,
1/2" NPT

Media: Liquid & gases

Weight: 5.5 kg

Materials

Solenoid pot - stainless steel - BFC
316

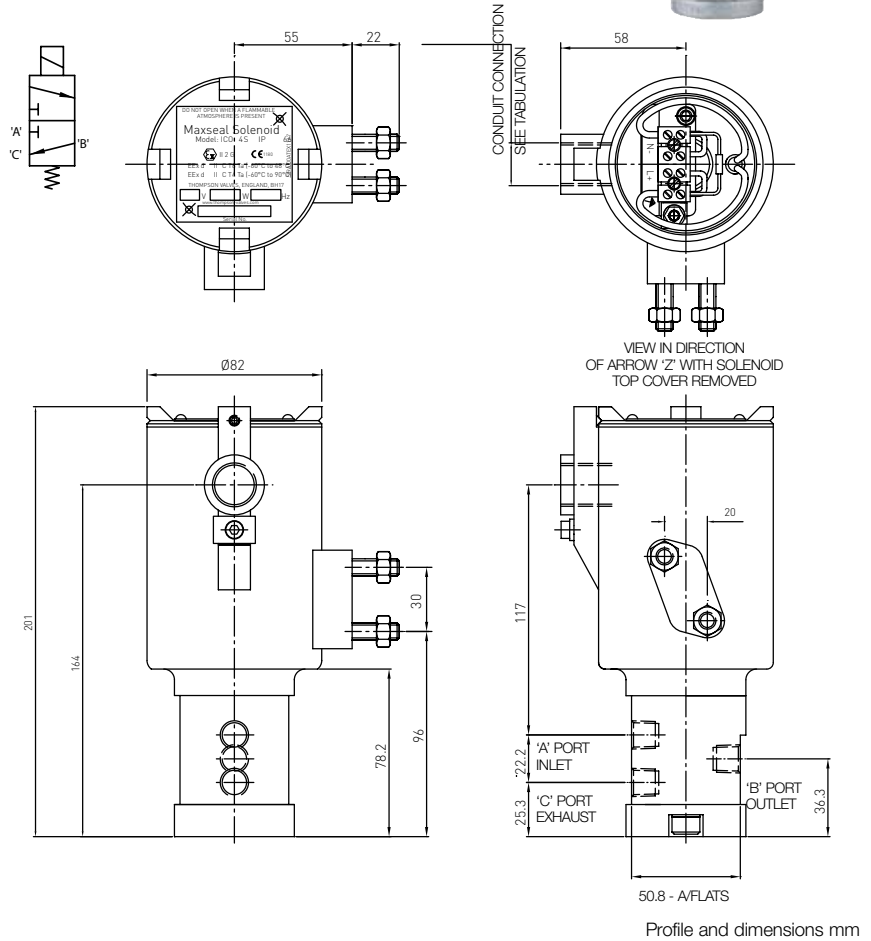
Top cover - stainless steel -
BFC 316

Valve body & trim materials -
316 stainless steel - 316L stainless
steel to the valve body and trim
materials

O-rings & seals -high nitrile (NBR)

Seats - nylon 66

Coil insulation - epoxy resin
to class H



Option selector

Y193A*****S

Model	Substitute	Body / trim materials	Substitute
ICO4S	Y1	316 SS / 316 SS	S
Operating pressure	Substitute	316L SS / 316L SS	T
0-414 bar	9	Voltage	Substitute
Port config.	Substitute	18 / 33V DC	A
3/2 UNIVERSAL	3	24V DC	B
Operation	Substitute	50V DC	C
Automatic	A	110V DC	D
Process conn.	Substitute	125V DC	E
1/4" NPT	A1	25V AC	G
1/4" BSPP	E1	110V AC	J
Seat / seal materials	Substitute	240V AC	M
Nylon / high nitrile	J	Conduit connection	Substitute
Nylon / viton®	K	M20 x 1.5	1
		1/2" NPT	2

Model: ICO4S 1/4" 5/2 UNI**Direct acting solenoid valve****Low pressure, high flow****Max inlet pressure 20 bar (290 psi)****Reliable and long life, ideal for a one time installation****Control of pneumatic or hydraulic operated equipment****ATEX, CSA, GOST K & R, IECEX and NEMA 4X****Technical features****Maximum inlet pressure:**

20 bar (290 psi)

Flow rates: $C_v = 0.8$ USgpm for 1 psi Δp $K_v = 11.5$ l/min for 1 bar(15 psi) Δp **Temperature ratings:**

Media (min/max -20°C/90°C

(-4°F/194°F) Ambient (min/max

0°C/60°C (32°F/140°F))

Valve size:

1/4" balanced poppet valve

Process connections:

1/4" NPT, 1/2" BSP

Conduit connection:

M20 x 1.5 conduit thread,

1/2" NPT

Media: Customer to specify and

confirm compatibility

Materials:

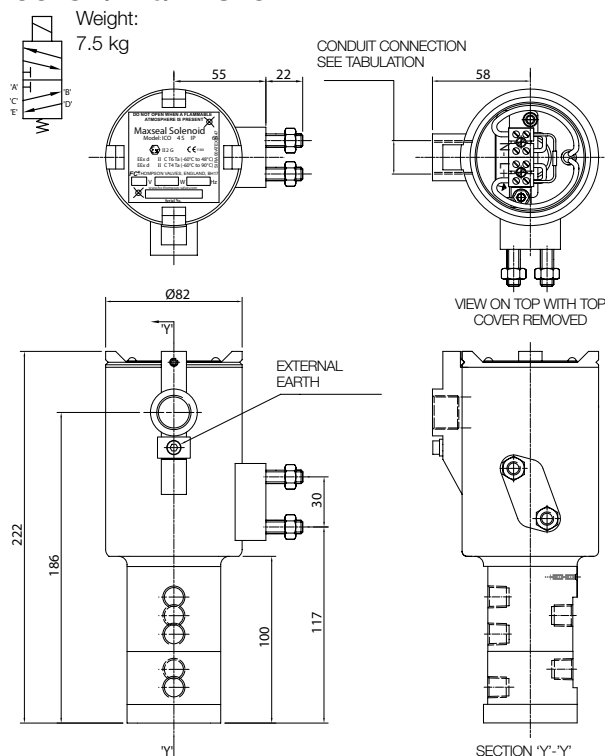
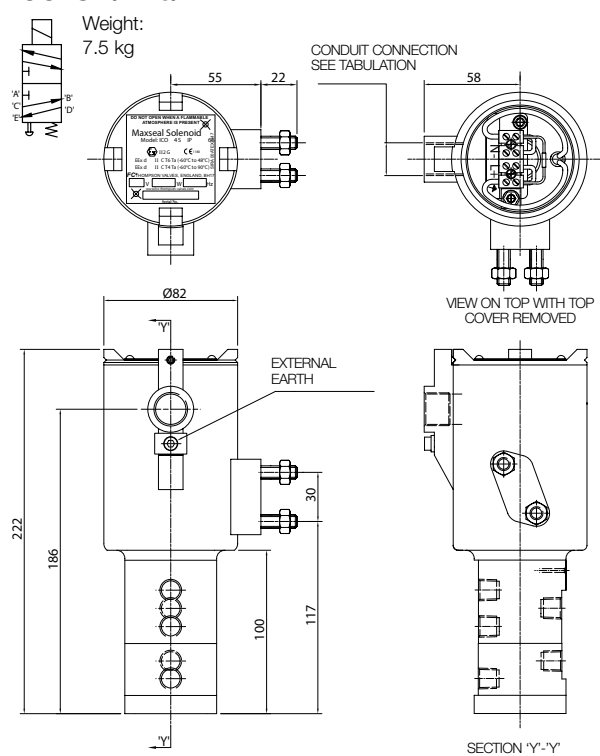
Valve body & trim - 316L

stainless steel

O-Rings seats & seals - high nitrile

Paint finish - stainless steel coil

housing - unpainted

**ICO4S 1/4" 5/2 AUTO**Weight:
7.5 kg**ICO4S 1/4" 5/2 PBMR**Weight:
7.5 kg

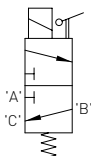
Profile and dimensions mm

Option selector**Y125★★★★★S**

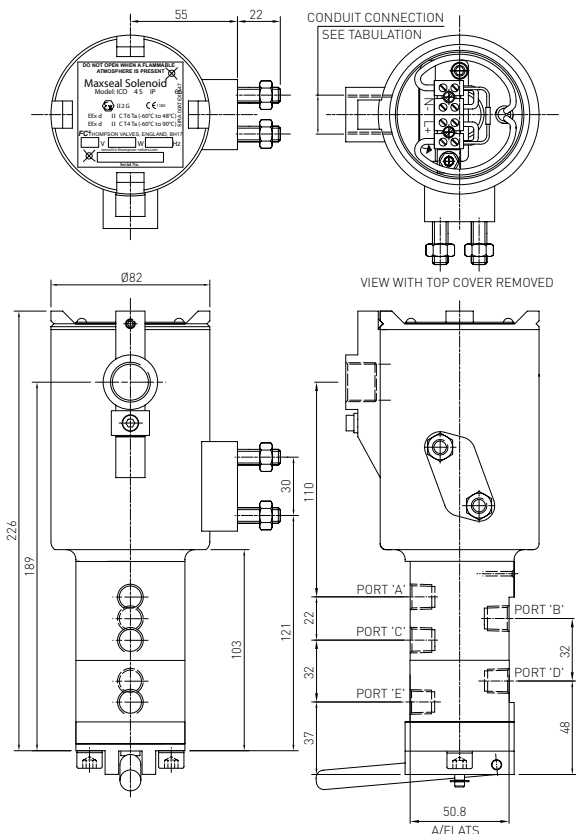
Model	Substitute
ICO4S	Y1
Operating pressure	Substitute
0-20 bar	2
Port config.	Substitute
5/2 UNIVERSAL	5
Operation	Substitute
Automatic	A
Lever manual reset	L
Push button manual reset	P
Process conn.	Substitute
1/4" NPT	A1
1/4" BSPP	E1
Seat / seal materials	Substitute
High nitrile	H
Viton®	V

Body / trim materials	Substitute
316 SS / 316 SS	S
316L SS / 316L SS	T
Voltage	Substitute
18 / 33V DC	A
24V DC	B
50V DC	C
110V DC	D
125V DC	E
25V AC	G
110V AC	J
240V AC	M
Conduit connection	Substitute
M20 x 1.5	1
1/2" NPT	2

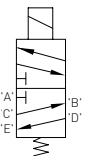
ICO4S 1/4" 5/2 20 BAR (290 PSI) LEVER MANUAL RESET



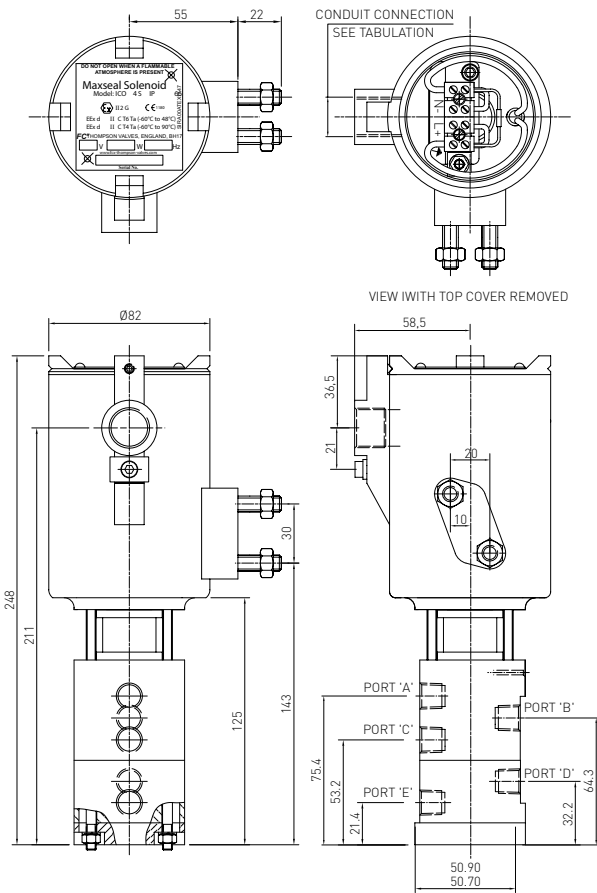
Weight: 5.5 kg
Ordering information:
Quote: Y125LA1H1DS



ICO4S 1/4" 5/2 20 BAR (290 PSI) HIGH TEMP SPACER AUTO



Weight: 6 kg
Ordering information:
Quote: Y125AA1H2BS002



3/2 universal

Certification EExd IIC T6 (Tamb = -60°C to +48°C (-76°F to +118°F))
or EExd IIC T4 (Tamb = -60°C to +90°C (-76°F to +194°F)).

Complies with EN 50014:1997 (amendments 1 & 2) and EN 50018:1994.

Atex certification SIRA 00ATEX1147, complies with ATEX directive 94/9/EC

IECEX certification IECEX BAS 04.0019, complies with IEC 60079-0:2000
& IEC 60079-1:2001

SIL 3 or SIL 4 (SIL 4 in a redundant configuration only)

Protection IP66/X8, NEMA 4X

**Technical features****Max. inlet pressure:**

0-20 bar (0-290 psi)

Port size: 3/8"

Process connections:

NPT

Conduit / Signal Conns:

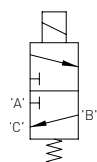
M20 x 1.5mm ISO (F)

Media:

Customer to specify and confirm compatibility

Electrical information

Voltage (nominal)	24V DC	Pull-in Voltage	>= 87.5% of nominal
Response Times (Typ)	Pull-in < 150 MS Drop Out < 80 MS	Drop-Out Voltage	10 - 20% of nominal
Voltage Protection	Surge suppression diodes fitted as STD	Coil Encapsulation	Class H
Leak Performance	Bubble tight	Coil Duty Cycle	100%

ICO4S 3/8" 3/2 20 BAR (290 PSI) AUTO**Flow rates:**

$C_v = 1.7$ USgpm for 1 psi Δp

$K_v = 24.5$ l/min for 1 bar

(15 psi) Δp

Temperature ratings:

Media (min/max): -20°C/90°C

(-4°F/194°F)

Ambient: must be used within 'T'
class temperature ranges shown

Coil Rating:

38 ohms

Power Consumption: 15.1 watts

Weight: 5.5 kg

Operation: Automatic

Materials:

Valve body & trim - 316L stainless
steel

O-Rings seats & seals - viton

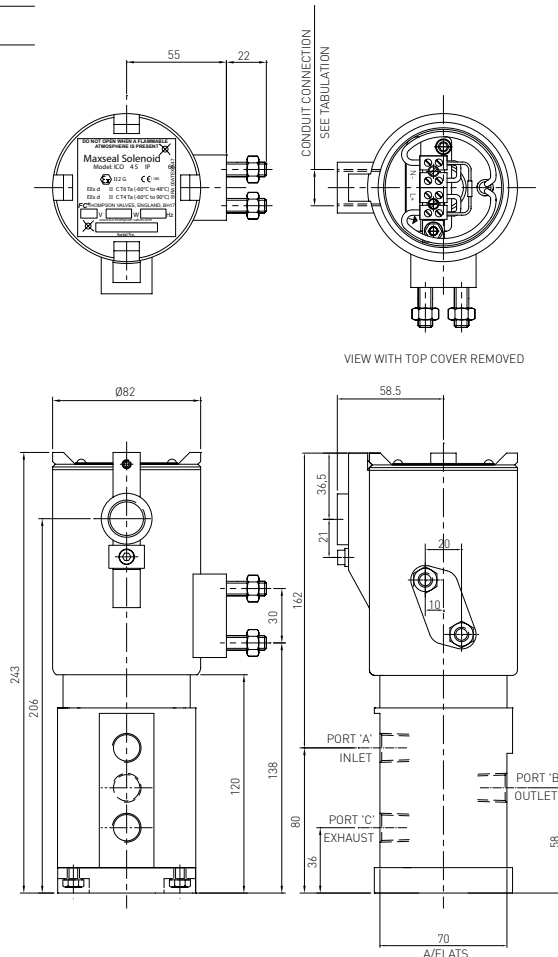
Paint finish - stainless steel coil

housing - unpainted

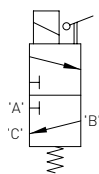
Ordering information:

Quote: Y123AA2V1BS

Options: None



ICO4S 3/8" 3/2 20 BAR (290 PSI) AUTO LATCHING LEVER



Temperature ratings:

Media (min/max): 0°C/60°C
(32°F/140°F)

Ambient: must be used
within 'T' class temperature
ranges shown

Coil Rating: 38 ohms

Power Consumption:

15.1 watts

Weight: 7.5 kg

Operation:

Automatic latching lever

Materials:

Valve body & trim -
aluminium bronze

O-Rings seats & seals -
high nitrile

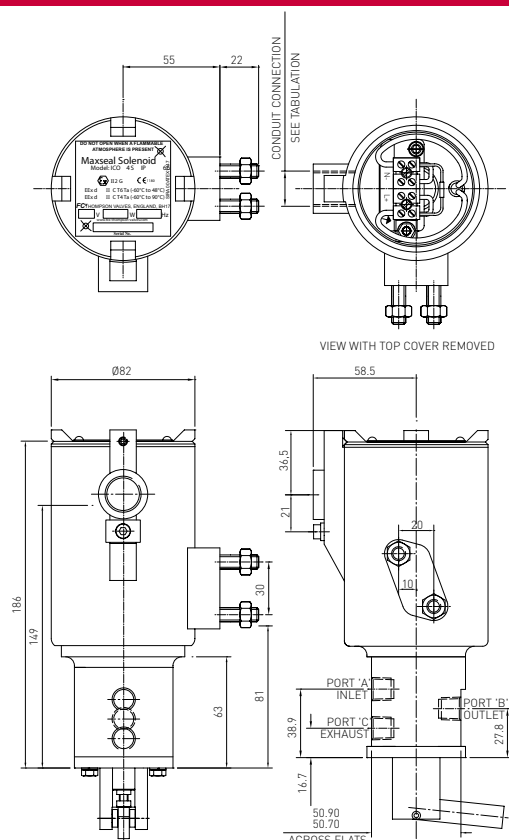
Paint finish - stainless steel

coil housing - unpainted

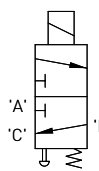
Ordering information:

Quote: Y123BA2H1BM

Options: None



ICO4S 3/8" 3/2 20 BAR (290 PSI) PBMR



Flow rates:

$C_v = 1.6$ USgpm for

1 psi Δp

$K_v = 24.5$ l/min for 1 bar

(15 psi) Δp

Temperature ratings:

Media (min/max):

-20°C/90°C (-4°F/194°F)

Ambient: must be used
within 'T' class temperature
ranges shown

Coil Rating: 125 ohms

Power Consumption:

15.1 watts

Weight: 4.5 kg

Operation:

Push button manual reset

Materials:

Valve body & trim - 316L

stainless steel

O-Rings seats & seals -
high nitrile

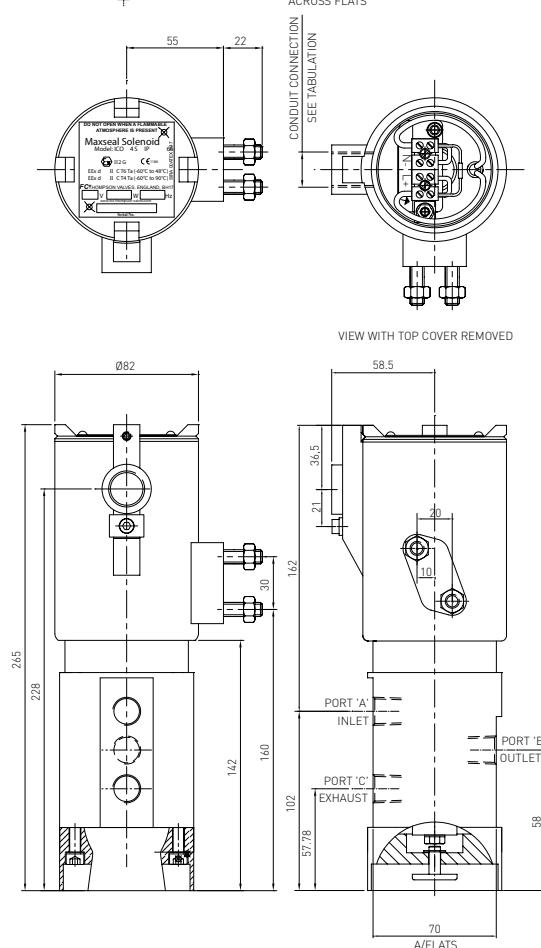
Paint finish - stainless steel

coil housing - unpainted

Ordering information:

Quote: Y123PA2H1BS

Options: None



Direct acting solenoid valve**Low pressure, high flow****Max inlet pressure 20 bar (290 psi)****Reliable and long life, ideal for a one time installation****Control of pneumatic or hydraulic operated equipment****ATEX, CSA, GOST K & R, IECEX and NEMA 4X****Technical features****Maximum inlet pressure:**

20 bar (290 psi)

Temperature ratings:

Media (min/max -60°C/90°C

(-76°F/194°F) Ambient (min/max

0°C/60°C (32°F/140°F))

Conduit connection:

M20 x 1.5 conduit thread,

1/2" NPT

Media: Liquid & gases**Materials**

Solenoid pot - stainless steel -

BFC 316

Top cover - stainless steel -

BFC 316

Valve body & trim materials -

316 stainless steel - 316L

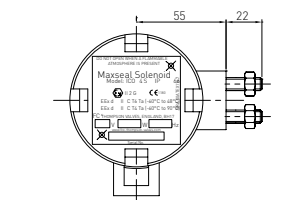
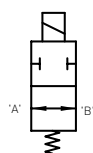
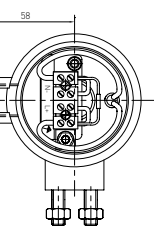
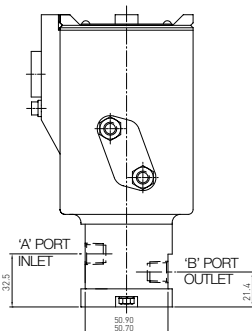
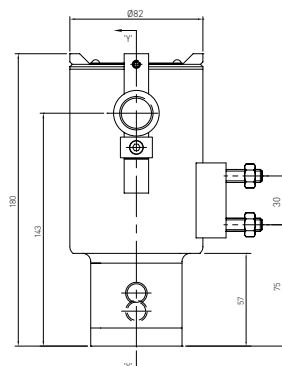
stainless steel to the valve body

and trim materials

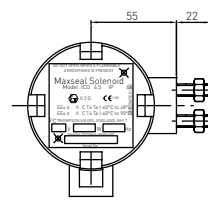
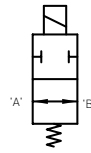
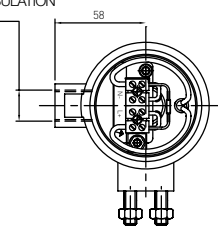
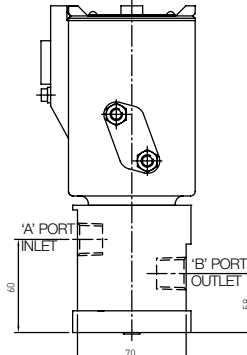
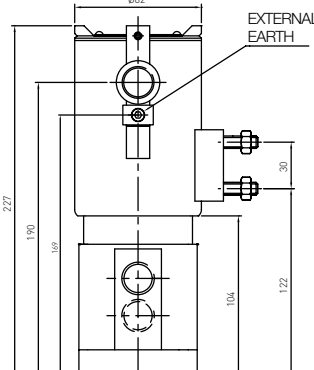
O-rings seats & seals -

high nitrile (NBR)

Coil insulation - class H

**ICO4S 1/4" 2/2 AUTO****Flow rates:** $C_v = 0.8$ USgpm for 1 psi Δp $K_v = 11.5$ l/min for 1 bar (15 psi) Δp **Valve size:** 1/4" balanced poppet valve**Process connections:** 1/4" NPT, 1/2" BSP**Weight:** 5 kgCONDUIT CONNECTION
SEE TABULATIONVIEW ON TOP WITH TOP
COVER REMOVED

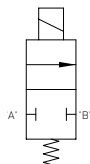
Profile and dimensions mm

ICO4S 1/2" 2/2 AUTO**Flow rates:** $C_v = 4.2$ USgpm for 1 psi Δp $K_v = 46$ l/min for 1 bar (15 psi) Δp **Valve size:** 1/2" balanced poppet valve**Process connections:** 1/2" NPT, 1/2" BSP**Weight:** 6 kgCONDUIT CONNECTION
SEE TABULATIONVIEW ON TOP WITH TOP
COVER REMOVED**Option selector**

Y12★A★★★★★

Model	Substitute		Body / trim materials	Substitute
ICO4S	Y1		316 SS / 316 SS	S
Operating pressure	Substitute		316L SS / 316L SS	T
0-20 bar	2		Voltage	Substitute
0-50 bar	3		18 / 33V DC	A
0-207 bar	6		24V DC	B
0-414 bar	9		50V DC	C
Port config.	Substitute		110V DC	D
2/2 ENG/OPEN	1		125V DC	E
2/2 ENG/CLOSE	2		25V AC	G
Operation	Substitute		110V AC	J
Automatic	A		240V AC	M
Process conn.	Substitute		115V DC	R
1/4" NPT	A1		Conduit connection	Substitute
1/4" BSPP	E1		M20 x 1.5	1
1/2" NPT	A3		1/2" NPT	2
1/2" BSPP	E3		Seat / seal materials	Substitute
			High nitrile	H
			FKM	V
			FLUROSILICONE	F

ICO4S 1/2" 2/2 50 BAR AUTO



2/2 energise to open
(normally closed)

Max. inlet pressure:

0-50 bar (0-725 psi)

Flow rates:

$C_v = 3.2$ USgpm for

1 psi Δp

$K_v = 50$ l/min for 1 bar

(15 psi) Δp

Port size: 1/2"

Coil Rating: 38 ohms

Power Consumption:

15.1 watts

Process connections:

NPT

Weight: 8.5 kg

Operation: Automatic

Materials:

Valve body & trim - 316L

stainless steel

O-Rings seats & seals -

high nitrile

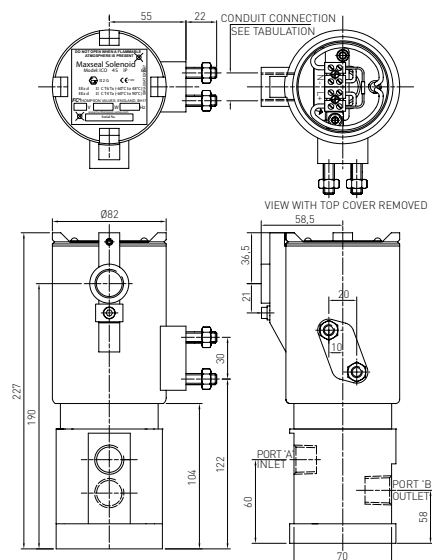
Paint finish - stainless steel

coil housing - unpainted

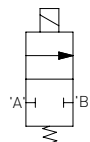
Ordering information:

Quote: Y131AA3H1BS

Options: None



ICO4S 1/2" 2/2 414 BAR (6005 PSI) AUTO



2/2 energise to open
(normally closed)

Max. inlet pressure:

0-414 bar (0-6005 psi)

Flow rates:

$C_v = 4.2$ USgpm for

1 psi Δp

$K_v = 60.5$ l/min for 1 bar

(15 psi) Δp

Port size: 1/2"

Coil Rating: 38 ohms

Power Consumption:

15.1 watts

Process connections:

NPT

Weight: 9 kg

Operation: Automatic

Materials:

Valve body & trim - 316L

stainless steel

O-Rings seats - nylon

O-Rings seals - high nitrile

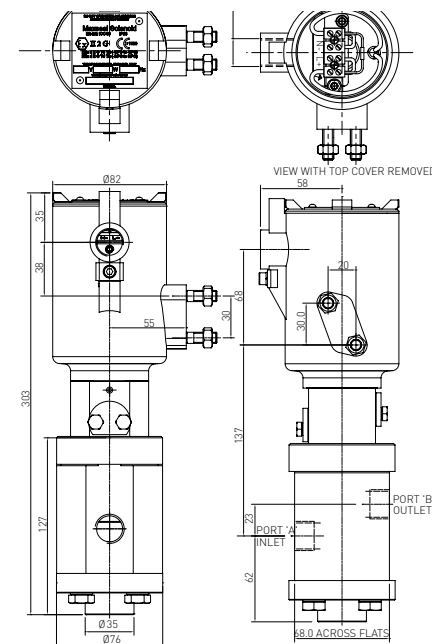
Paint finish - stainless steel

coil housing - unpainted

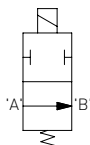
Ordering information:

Quote: Y191AA3J1BS

Options: None



ICO4S MANIFOLD MOUNT 2/2 AUTO 207 BAR (3002 PSI)



2/2 energise to close
(normally open)

Max. inlet pressure:

0-207 bar (0-3002 psi)

Flow rates:

$C_v = 0.28$ USgpm for

1 psi Δp

$K_v = 4$ l/min for 1 bar

(15 psi) Δp

Port size:

5mm drilled ports

Coil Rating: 60 ohms

Power Consumption:

9.6 watts

Process connections:

5mm drilled ports

Weight: 5.5 kg

Operation: Automatic

Materials:

Valve body & trim - 316L

stainless steel

O-Rings seats - nylon

O-Rings seals - high nitrile

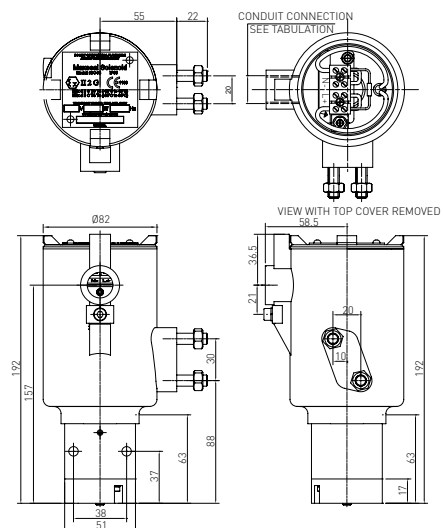
Paint finish - stainless steel

coil housing - unpainted

Ordering information:

Quote: Y162AKFJ1BS

Options: Manifold mount



Direct acting solenoid valve
Low pressure, high flow
Reliable and long life, ideal for a one time installation
Control of pneumatic or hydraulic operated equipment
ATEX, CSA, GOST K & R, IECEX and NEMA 4X

Technical features

Maximum inlet pressure:

20 bar (290 psi)

Temperature ratings:

Media (min/max -20°C/90°C
(-4°F/194°F) Ambient (min/max
0°C/60°C (32°F/140°F)

Process connections:

1/2" NPT, 1/2" BSP

Conduit connection:

M20 x 1.5 conduit thread,
1/2" NPT

Media: Liquid & gases

Weight: 7.5 kg

Materials:

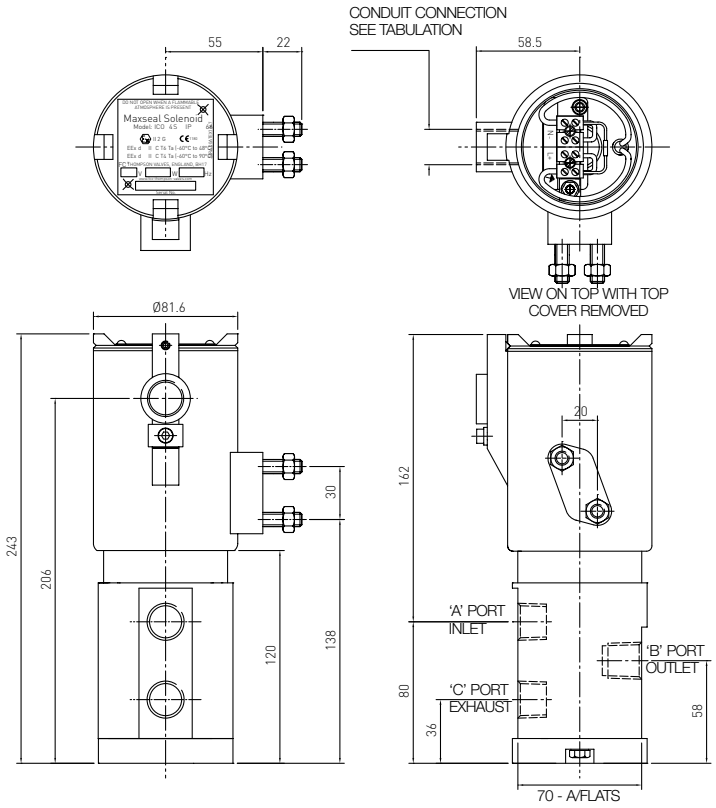
Solenoid pot - stainless steel -
BFC 316

Top cover - stainless steel - BFC
316

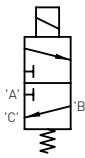
Valve body & trim materials -
316 stainless steel - 316L stainless
steel to the valve body and trim
materials

O-rings seats & seals -high nitrile
(NBR)

Coil insulation - class H



ICO4S 1/2" 3/2 AUTO



Flow rates:

$C_v = 4.2$ USgpm for 1 psi Δp

$K_v = 46$ l/min for 1 bar (15 psi) Δp

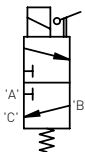
Profile and dimensions mm

Option selector

Y123*****

Model	Substitute	Body / trim materials	Substitute
ICO4S	Y1	316 SS / 316 SS	S
Operating pressure	Substitute	316L SS / 316L SS	T
0-20 bar	2	Voltage	Substitute
Port config.	Substitute	18 / 33V DC	A
3/2 UNIVERSAL	3	24V DC	B
Operation	Substitute	50V DC	C
Automatic	A	110V DC	D
Automatic latching lever	B	125V DC	E
Lever manual override	M	25V AC	G
Push button manual reset	P	110V AC	J
Jack screw manual override	S	240V AC	M
Process conn.	Substitute	Conduit connection	Substitute
1/2" NPT	A3	M20 x 1.5	1
1/2" BSPP	E3	1/2" NPT	2
Seat / seal materials	Substitute		
High nitrile	H		
Viton®	V		

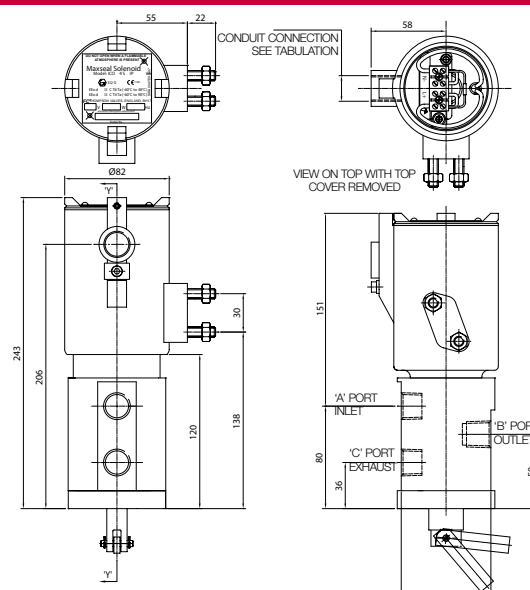
ICO4S 1/2" 3/2 A-L-L

**Flow rates:**

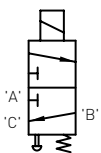
$C_v = 4.2$ USgpm for
1 psi Δp
 $K_v = 46$ l/min for 1 bar
(15 psi) Δp

Valve size:

1/2" balanced poppet valve



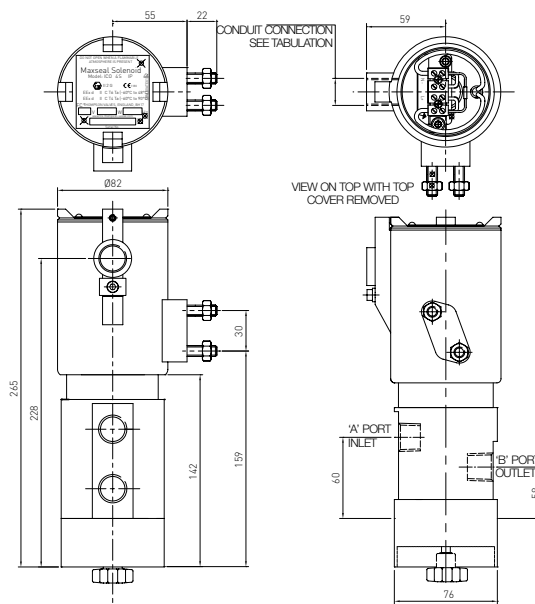
ICO4S 1/2" 3/2 PBMR

**Flow rates:**

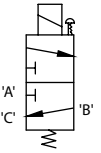
$C_v = 4.2$ USgpm for
1 psi Δp
 $K_v = 46$ l/min for 1 bar
(15 psi) Δp

Valve size:

1/2" balanced poppet valve



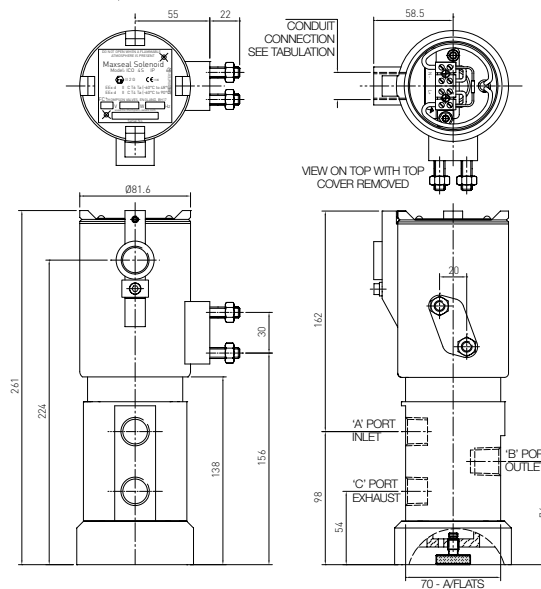
ICO4S 1/2" 3/2 JSMO

**Flow rates:**

$C_v = 4.2$ USgpm for
1 psi Δp
 $K_v = 46$ l/min for 1 bar
(15 psi) Δp

Valve size:

1/2" balanced poppet valve



3/2 universal

Certification EExd IIC T6 (Tamb = -60°C to +48°C (-76°F to +118°F)) or EExd IIC T4 (Tamb = -60°C to +90°C (-76°F to +194°F)).

Complies with EN 50014:1997 (amendments 1 & 2) and EN 50018:1994.

Atex certification SIRA 00ATEX1147, complies with ATEX directive 94/9/EC

IECEX certification IECEX BAS 04.0019, complies with IEC 60079-0:2000 & IEC 60079-1:2001

SIL 3 or SIL 4 (SIL 4 in a redundant configuration only)

Protection IP66/X8, NEMA 4X

Technical features

Max. inlet pressure:

0-20 bar (0-290 psi)

Flow rates:

$C_v = 4.2$ USgpm for 1 psi Δp

$K_v = 60.9$ l/min for 1 bar (15 psi) Δp

Temperature ratings:

Media (min/max): -20°C/90°C (-4°F/194°F)

Ambient: must be used within 'T' class

temperature ranges shown

Port size: 1/2"

Process connections: NPT

Conduit / Signal Conns:

M20 x 1.5mm ISO (F)

Media:

Customer to specify and confirm compatibility

Weight: 8.5 kg

Materials:

Valve body & trim - 316L stainless steel

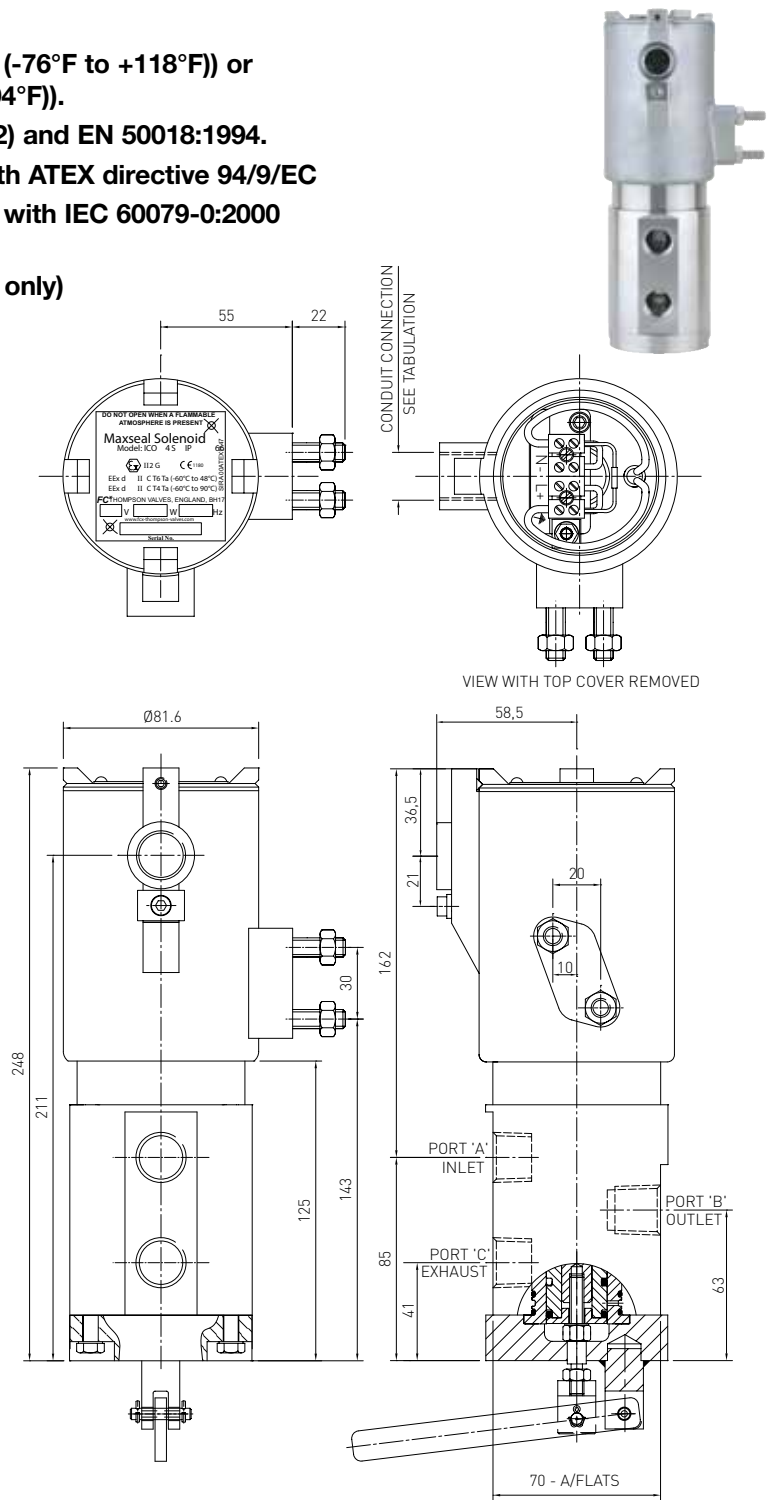
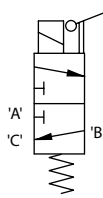
O-Rings seats & seals - high nitrile

Paint finish - stainless steel coil housing - unpainted

Ordering information:

Quote: Y123MA3H1BS

Options: None



Electrical information

Voltage (nominal)	24V DC	Pull-in Voltage	>= 87.5% of nominal
Response Times (Typ)	Pull-in < 150 MS Drop Out < 80 MS	Drop-Out Voltage	10 - 20% of nominal
Coil Rating	38 ohms	Power Consumption	15.1 watts
Voltage Protection	Surge suppression diodes fitted as STD	Coil Encapsulation	Class H
Leak Performance	Bubble tight	Coil Duty Cycle	100%

3/2 3-port / 2-way not suitable for universal opn

Certification EExd IIC T6 (Tamb = -60°C to +48°C (-76°F to +118°F)) or EExd IIC T4 (Tamb = -60°C to +90°C (-76°F to +194°F)).

Complies with EN 50014:1997 (amendments 1 & 2) and EN 50018:1994.

Atex certification SIRA 00ATEX1147, complies with ATEX directive 94/9/EC

IECEX certification IECEX BAS 04.0019, complies with IEC 60079-0:2000 & IEC 60079-1:2001

SIL 3 or SIL 4 (SIL 4 in a redundant configuration only)

Protection IP66/X8, NEMA 4X

Technical features

Max. inlet pressure:

0-20 bar (0-290 psi)

Flow rates:

$C_v = 4.2$ USgpm for 1 psi Δp

$K_v = 60.9$ l/min for 1 bar (15 psi) Δp

Temperature ratings:

Media (min/max): -20°C/90°C (-4°F/194°F)

Ambient: must be used within 'T' class

temperature ranges shown

Port size: 1/2"

Process connections: NPT

Conduit / Signal Conns:

M20 x 1.5mm ISO (F)

Media:

Customer to specify and confirm compatibility

Weight: 7.5 kg

Materials:

Valve body & trim - 316L stainless steel

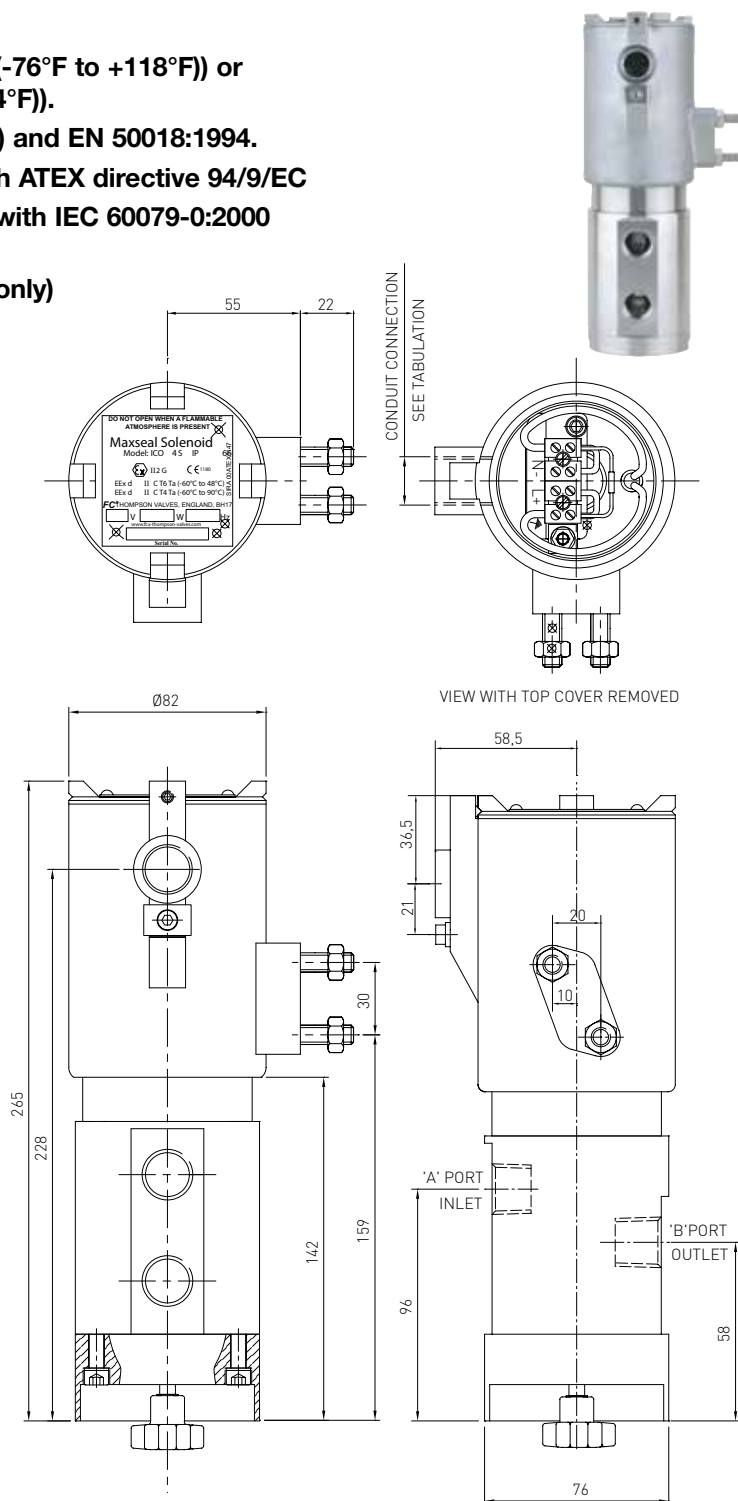
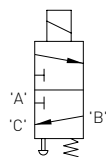
O-Rings seats & seals - high nitrile

Paint finish - stainless steel coil housing - unpainted

Ordering information:

Quote: Y123PA3H1BS

Options: None



Electrical information

Voltage (nominal)	24V DC				Pull-in Voltage	>= 87.5% of nominal
Response Times (Typ)	Pull-in	< 150 MS	Drop Out	< 80 MS	Drop-Out Voltage	10 - 20% of nominal
Coil Rating	125 ohms				Power Consumption	6 watts
Voltage Protection	Surge suppression diodes fitted as STD				Coil Encapsulation	Class H
Leak Performance	Bubble tight				Coil Duty Cycle	100%

3/2 3-port / 2-way not suitable for universal opn

Certification EExd IIC T6 (Tamb = -60°C to +48°C (-76°F to +118°F))
or EExd IIC T4 (Tamb = -60°C to +90°C (-76°F to +194°F)).

Complies with EN 50014:1997 (amendments 1 & 2) and EN 50018:1994.

Atex certification SIRA 00ATEX1147, complies with ATEX directive 94/9/EC

IECEX certification IECEX BAS 04.0019, complies with IEC 60079-0:2000
& IEC 60079-1:2001

SIL 3 or SIL 4 (SIL 4 in a redundant configuration only)

Protection IP66/X8, NEMA 4X



Technical features

Max. inlet pressure:

0-50 bar (0-725 psi)

Flow rates:

$C_v = 3.2$ USgpm for 1 psi Δp

$K_v = 50$ l/min for 1 bar (15 psi) Δp

Temperature ratings:

Media (min/max): -20°C/90°C (-4°F/194°F)

Ambient: must be used within 'T' class

temperature ranges shown

Port size: 1/2"

Process connections: NPT

Conduit / Signal Conns:

M20 x 1.5mm ISO (F)

Media:

Customer to specify and confirm
compatibility

Weight: 7.5 kg

Operation: Automatic

Materials:

Valve body & trim - 316L stainless steel

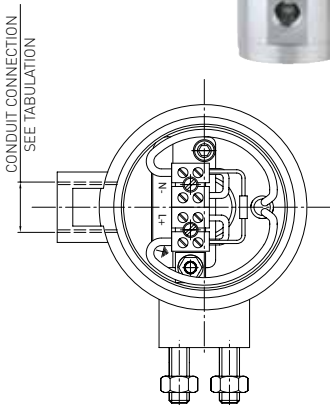
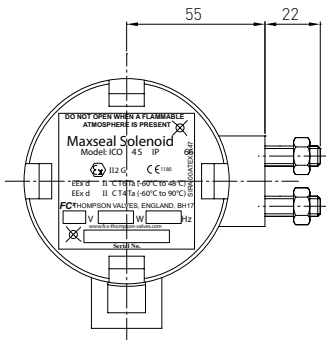
O-Rings seats & seals - high nitrile

Paint finish - stainless steel coil housing -
unpainted

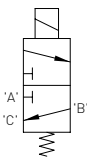
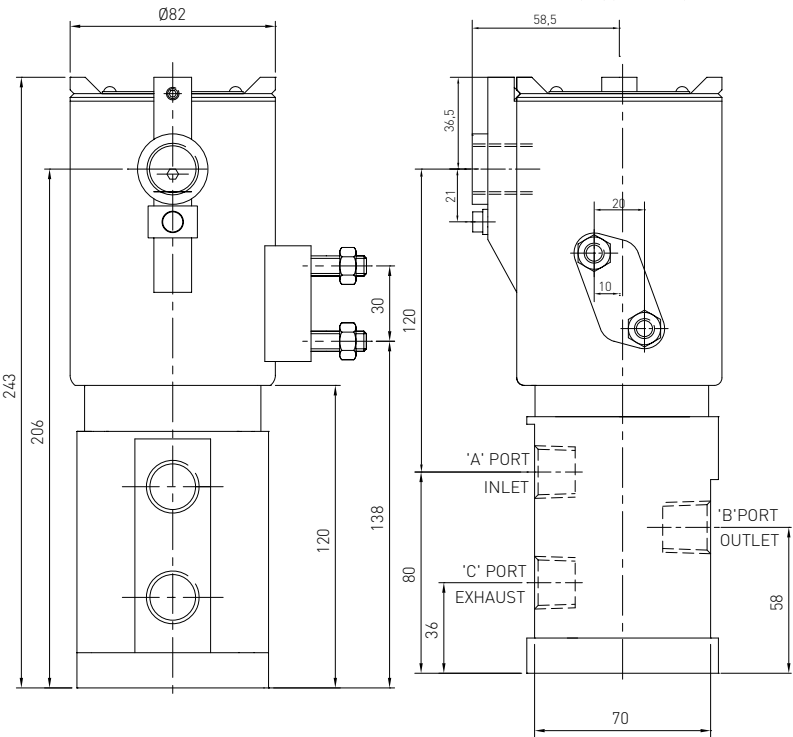
Ordering information:

Quote: Y133AA3H1BS

Options: None



VIEW WITH TOP COVER REMOVED



Electrical information

Voltage (nominal)	24V DC	Pull-in Voltage	>= 87.5% of nominal
Response Times (Typ)	Pull-in < 150 MS	Drop Out < 80 MS	Drop-Out Voltage 10 - 20% of nominal
Coil Rating	38 ohms	Power Consumption	15.1 watts
Voltage Protection	Surge suppression diodes fitted as STD	Coil Encapsulation	Class H
Leak Performance	Bubble tight	Coil Duty Cycle	100%

Certification EExd IIC T6 (Tamb = -60°C to +48°C (-76°F to +118°F)) or EExd IIC T4 (Tamb = -60°C to +90°C (-76°F to +194°F)).

Complies with EN 50014:1997 (amendments 1 & 2) and EN 50018:1994.

Atex certification SIRA 00ATEX1147, complies with ATEX directive 94/9/EC

IECEx certification IECEx BAS 04.0019, complies with IEC 60079-0:2000 & IEC 60079-1:2001

SIL 3 or SIL 4 (SIL 4 in a redundant configuration only)

Protection IP66/X8, NEMA 4X

Technical features

Max. inlet pressure:

0-12 bar (0-174 psi)

Flow rates:

$C_v = 2.1$ USgpm for 1 psi Δp

$K_v = 30.2$ l/min for 1 bar (15 psi) Δp

Port size: 1/2"

Process connections: NPT

Conduit / Signal Conns:

M20 x 1.5mm ISO (F)

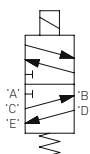
Media: Customer to specify and confirm compatibility

Weight: TBA kg

Electrical information

Response Times (Typ)	Pull-in	< 150 MS	Drop Out	< 80 MS
Voltage Protection	Surge suppression diodes fitted as STD			
Leak Performance	Bubble tight			
Pull-in Voltage	≥ 87.5% of nominal			
Drop-Out Voltage	10 - 20% of nominal			
Coil Encapsulation	Class H			
Coil Duty Cycle	100%			

ICO4S 1/2" 5/2 12 BAR (174 PSI) AUTO



Temperature ratings:

Media (min/max):

-50°C/90°C (-58°F/194°F)

Ambient: must be used within 'T' class temperature ranges shown

Voltage (nominal): 24V DC

Coil Rating: 60 ohms

Power Consumption:

9.6 watts

Operation:

Automatic

Materials:

Valve body & trim - 316L

stainless steel

O-Rings seats & seals - nitrile

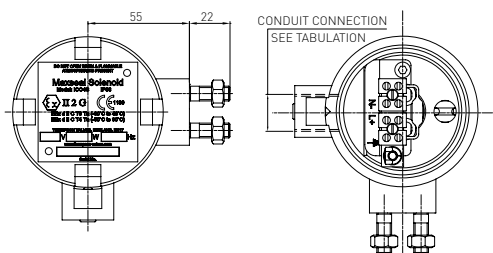
Paint finish - stainless steel

coil housing - unpainted

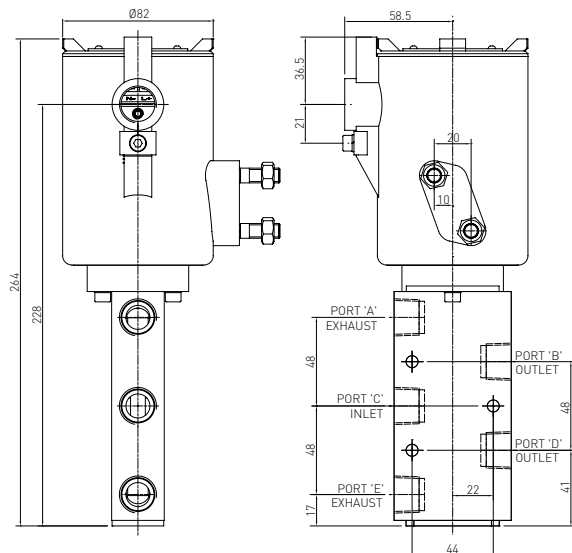
Ordering information:

Quote: Y115AA3H1BS

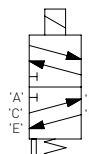
Options: None



VIEW WITH TOP COVER REMOVED



ICO4S 1/2" 5/2 12 BAR (174 PSI) PBMR



Temperature ratings:

Media (min/max): -30°C/80°C (-22°F/176°F)

Ambient: must be used within 'T' class temperature ranges shown

Voltage (nominal): 110V DC

Coil Rating: 2600 ohms

Power Consumption:

4.7 watts

Operation:

Push button manual reset

Materials:

Valve body & trim - 316L stainless steel

O-Rings seats & seals -

high nitrile

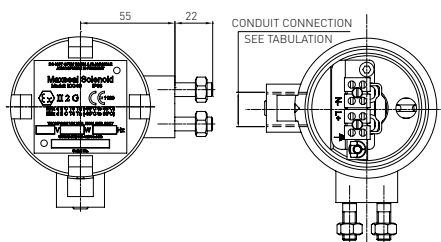
Paint finish - stainless steel

coil housing - unpainted

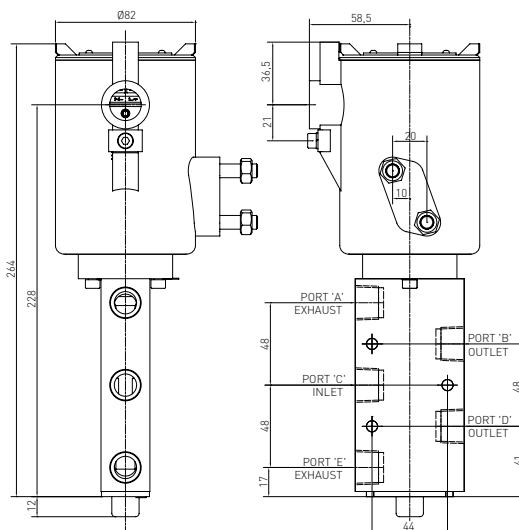
Ordering information:

Quote: Y115PA3H1DS

Options: None



VIEW WITH TOP COVER REMOVED



3/2 universal

Certification EExd IIC T6 (Tamb = -60°C to +48°C (-76°F to +118°F)) or EExd IIC T4 (Tamb = -60°C to +90°C (-76°F to +194°F)).

Complies with EN 50014:1997 (amendments 1 & 2) and EN 50018:1994.

Atex certification SIRA 00ATEX1147, complies with ATEX directive 94/9/EC

IECEX certification IECEX BAS 04.0019, complies with IEC 60079-0:2000 & IEC 60079-1:2001

SIL 3 or SIL 4 (SIL 4 in a redundant configuration only)

Protection IP66/X8, NEMA 4X

Technical features

Max. inlet pressure:

0-12 bar (0-174 psi)

Flow rates:

$C_v = 6$ USgpm for 1 psi Δp

$K_v = 86.2$ l/min for 1 bar (15 psi) Δp

Temperature ratings:

Media (min/max): -55°C/90°C (-67°F/194°F)

Ambient: must be used within 'T' class

temperature ranges shown

Port size: 3/4"

Process connections: NPT

Conduit / Signal Conns:

M20 x 1.5mm ISO (F)

Media:

Customer to specify and confirm compatibility

Weight: 7.2 kg

Operation: Automatic

Materials:

Valve body & trim - 316L stainless steel

O-Rings seats - N70C NBR

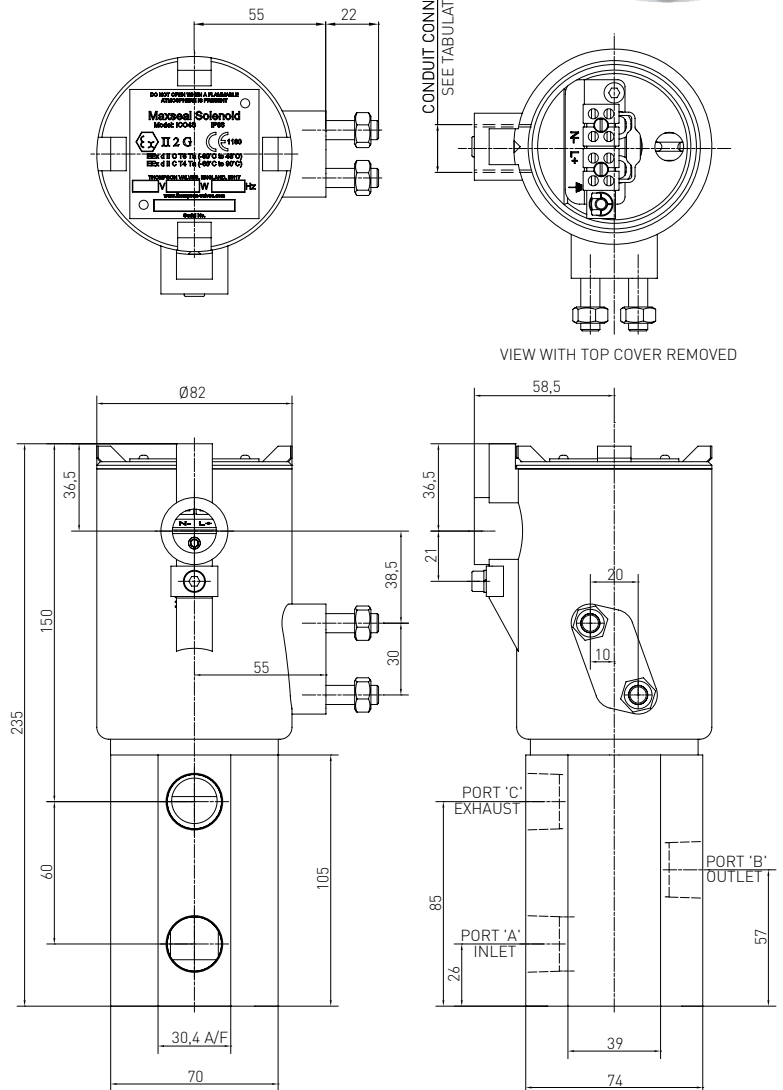
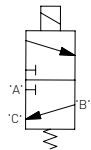
O-Rings seals - high nitrile

Paint finish - stainless steel coil housing - unpainted

Ordering information:

Quote: Y113AA5H1BS

Options: None



Electrical information

Voltage (nominal)	24V DC	Pull-in Voltage	>= 87.5% of nominal
Response Times (Typ)	Pull-in < 150 MS	Drop Out < 80 MS	Drop-Out Voltage 10 - 20% of nominal
Coil Rating	38 ohms	Power Consumption	15.1 watts
Voltage Protection	Surge suppression diodes fitted as STD	Coil Encapsulation	Class H
Leak Performance	Bubble tight	Coil Duty Cycle	100%

3/2 3-port / 2-way not suitable for universal opn

Certification EExd IIC T6 (Tamb = -60°C to +48°C (-76°F to +118°F)) or EExd IIC T4 (Tamb = -60°C to +90°C (-76°F to +194°F)).

Complies with EN 50014:1997 (amendments 1 & 2) and EN 50018:1994.

Atex certification SIRA 00ATEX1147, complies with ATEX directive 94/9/EC

IECEX certification IECEX BAS 04.0019, complies with IEC 60079-0:2000 & IEC 60079-1:2001

SIL 3 or SIL 4 (SIL 4 in a redundant configuration only)

Protection IP66/X8, NEMA 4X

Technical features

Max. inlet pressure:
0-207 bar (0-3002 psi)

Flow rates:
 $C_v = 0.28$ USgpm for 1 psi Δp
 $K_v = 4$ l/min for 1 bar
(15 psi) Δp

Temperature ratings:
Media (min/max): -20°C/90°C
(-4°F/194°F)
Ambient: must be used within 'T'
class temperature ranges shown
Process connections:
5mm drilled ports

Conduit / Signal Conns:

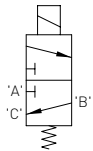
M20 x 1.5mm ISO (F)

Media: Customer to specify and
confirm compatibility

Weight: 5 kg

Materials: Valve body & trim -
316L stainless steel
O-Rings seats - nylon
O-Rings seals - high nitrile
Paint finish - stainless steel coil
housing - unpainted

ICO4S MANIFOLD MOUNT 3/2 AUTO 207 BAR (3002 PSI)



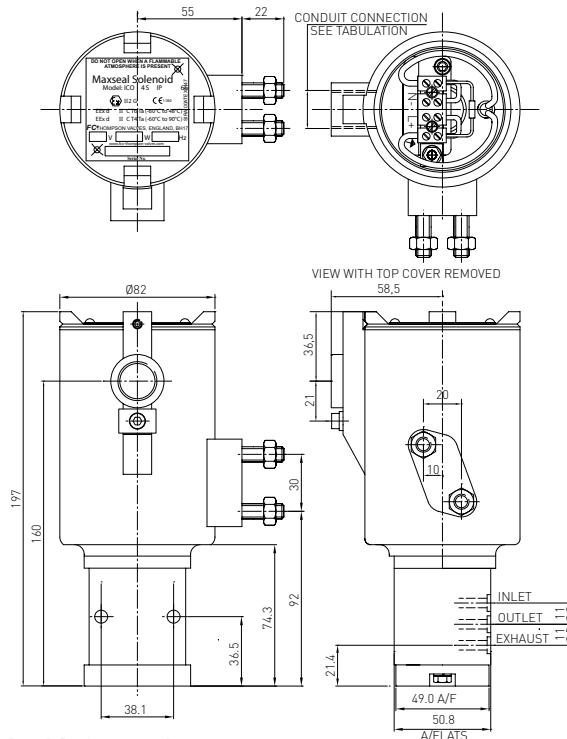
Port size: 5 mm drilled ports

Operation: Automatic

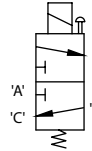
Ordering information:

Quote: Y163AKFJ1BS

Options: Manifold mount



ICO4S MANIFOLD MOUNT 3/2 PBMO 207 BAR (3002 PSI)



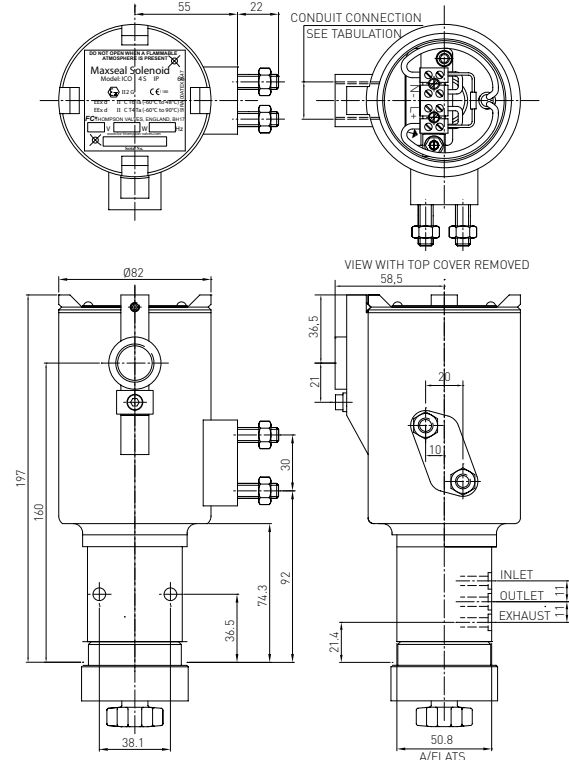
Port size: 1/4"

Operation: Push button manual override

Ordering information:

Quote: Y163CKFJ1BS

Options: None



Electrical information

Voltage (nominal)	24V DC	Pull-in Voltage	>= 87.5% of nominal
Response Times (Typ)	Pull-in < 150 MS Drop Out < 80 MS	Drop-Out Voltage	10 - 20% of nominal
Coil Rating	60 ohms	Power Consumption	9.6 watts
Voltage Protection	Surge suppression diodes fitted as STD	Coil Encapsulation	Class H
Leak Performance	Bubble tight	Coil Duty Cycle	100%

Certification EExd IIC T6 (Tamb = -60°C to +48°C (-76°F to +118°F)) or EExd IIC T4 (Tamb = -60°C to +90°C (-76°F to +194°F)).

Complies with EN 50014:1997 (amendments 1 & 2) and EN 50018:1994.

Atex certification SIRA 00ATEX1147, complies with ATEX directive 94/9/EC

IECEx certification IECEx BAS 04.0019, complies with IEC 60079-0:2000 & IEC 60079-1:2001

SIL 3 or SIL 4 (SIL 4 in a redundant configuration only)

Protection IP66/X8, NEMA 4X

Technical features

Max. inlet pressure:

0-414 bar (0-6005 psi)

Flow rates:

$C_v = 0.28$ USgpm for 1 psi Δp

$K_v = 4$ l/min for 1 bar

(15 psi) Δp

Temperature ratings:

Media (min/max): -20°C/90°C

(-4°F/194°F)

Ambient: must be used within 'T' class temperature ranges shown

Process connections:

5 mm drilled ports

Conduit / Signal Conns:

M20 x 1.5mm ISO (F)

Media: Customer to specify and confirm compatibility

Weight: 5.5 kg

Materials: Valve body & trim -

316L stainless steel

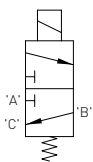
O-Rings seats - nylon

O-Rings seals - high nitrile

Paint finish - stainless steel coil

housing - unpainted

ICO4S MANIFOLD MOUNT 3/2 AUTO 414 BAR (6005 PSI)



3/2 norm (414B hyd / 300B gas (6004 psi hyd / 4351 psi gas)) 3/2 uni (300B hyd/150B gas (4351 psi hyd/2176 psi gas))

Port size: 1/4"

Coil Rating: 38 ohms

Power Consumption:

15.1 watts

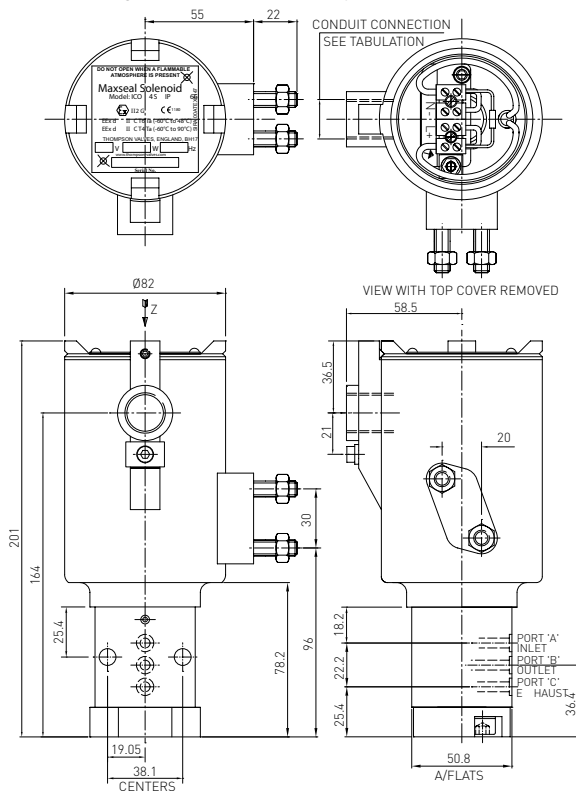
Operation:

Automatic

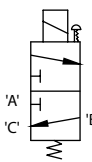
Ordering information:

Quote: Y193AKFJ1BS

Options: Manifold mount



ICO4S MANIFOLD MOUNT 3/2 JSM0 414 BAR (6005 PSI)



3/2 norm (414B hyd / 300B gas (6004 psi hyd / 4351 psi gas)) 3/2 uni (300B hyd/150B gas (4351 psi hyd/2176 psi gas))

Port size: 5 mm drilled ports

Coil Rating: 780 ohms

Power Consumption:

15.5 watts

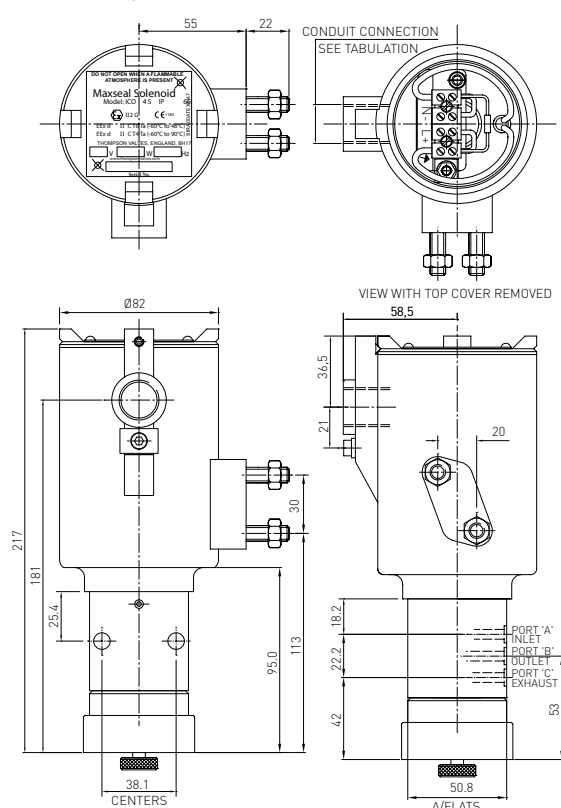
Operation:

Jackscrew manual override

Ordering information:

Quote: Y193SKFJ1DS

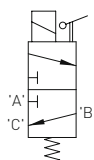
Options: Manifold mount



Electrical information

Voltage (nominal)	24V DC	Pull-in Voltage	>= 87.5% of nominal
Response Times (Typ)	Pull-in < 150 MS Drop Out < 80 MS	Drop-Out Voltage	10 - 20% of nominal
Voltage Protection	Surge suppression diodes fitted as STD	Coil Encapsulation	Class H
Leak Performance	Bubble tight	Coil Duty Cycle	100%

IC04S MANIFOLD MOUNT 3/2 LM0 414 BAR (6005 PSI)



3/2 norm (414B hyd / 300B
gas (6004 psi hyd / 4351
psi gas)) 3/2 uni (300B
hyd/150B gas (4351 psi
hyd/2176 psi gas))

Port size:

5 mm drilled ports

Coil Rating: 38 ohms

Power Consumption:

15.1 watts

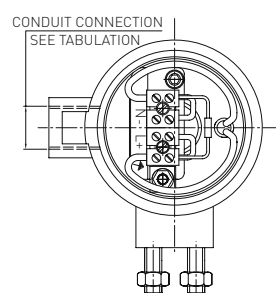
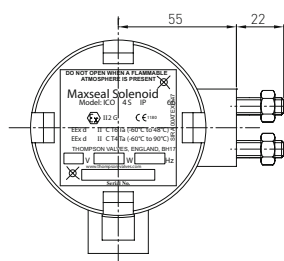
Operation:

Lever manual override

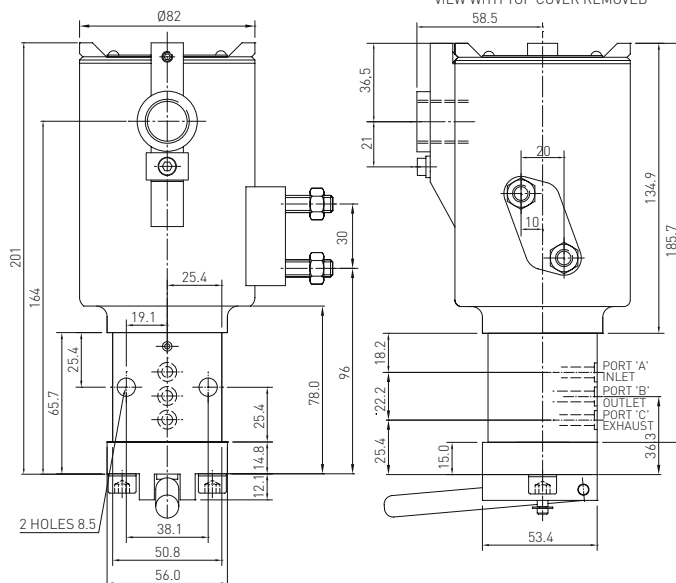
Ordering information:

Quote: Y193MKFJ1BS

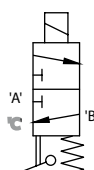
Options: Manifold mount



VIEW WITH TOP COVER REMOVED



**IC04S MANIFOLD MOUNT 3/2 LMR 414 BAR
(6005 PSI)**



3/2 3-port / 2-way not
suitable for universal open

Port size:

5 mm drilled ports

Coil Rating: 125 ohms

Power Consumption:

6 watts

Process connections:

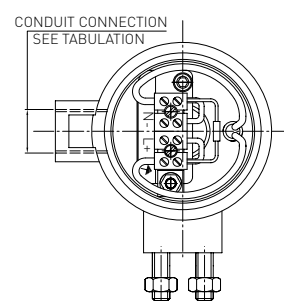
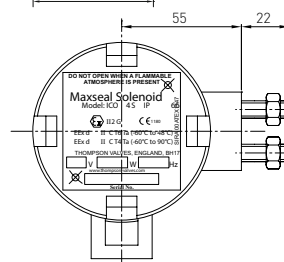
5mm drilled ports-flg mtd

Operation:

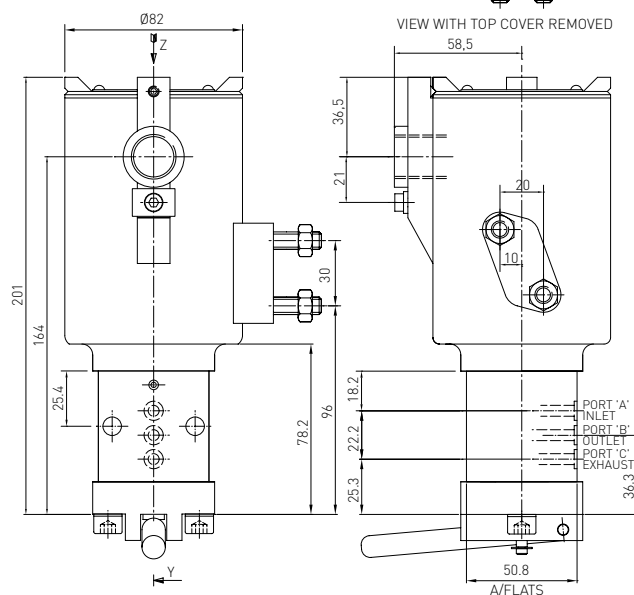
Lever manual reset

Ordering information:

Quote: Y193LK FJ1BS



CONDUIT CONNECTION
SEE TABULATION



Inlet - outlet - exhaust

Certification: No "T" class rating applicable for quick exhaust valves or
 Ambient temperature indential to media temperatures

Atex certification none, not applicable

Technical features

Max. inlet pressure:

0.5-12 bar (7-174 psi)

Temperature ratings:

Media (min/max): -50°C/80°C

(-58°F/176°F)

Ambient: must be used within 'T'
 class temperature ranges shown

Process connections: NPT

Conduit / Signal Conns: None

Media:

Customer to specify and confirm
 compatibility

Operation:

Automatic

Leak Performance:

Bubble tight

Materials:

Valve body & trim - 316L stainless
 steel

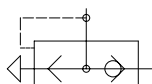
O-Rings seats & seals - nitrile

Paint finish - stainless steel

construction - unpainted



QEV 1/4"



Flow rates:

$C_v = 1.6/2.1$ USgpm for

1 psi Δp

$K_v = 23.2/30.5$ l/min for

1 bar (15 psi) Δp

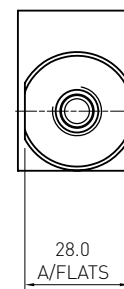
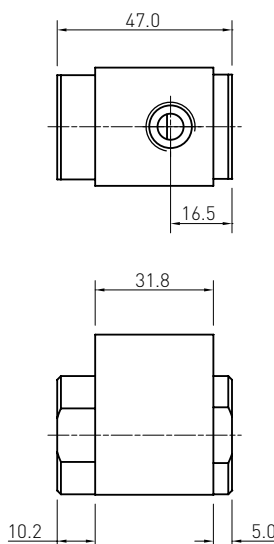
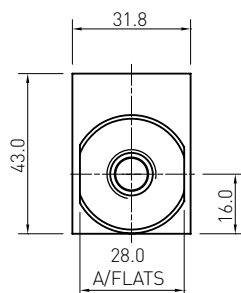
Port size: 1/4"

Weight: 0.35 kg

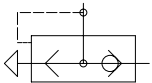
Ordering information:

Quote: QEV13AA1H00S

Options: None



QEV 1/2"



Flow rates:

$C_v = 6.4/5.5$ USgpm for 1

psi Δp

$K_v = 92.8/79.8$ l/min for

1 bar (15 psi) Δp

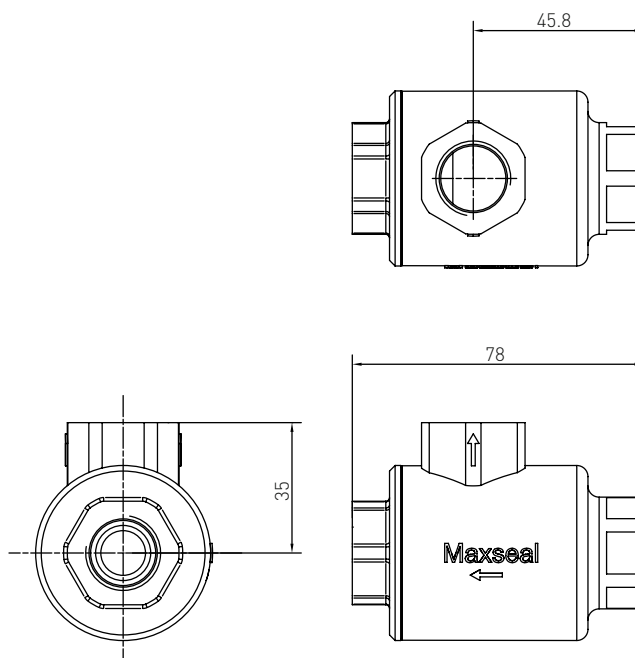
Port size: 1/2"

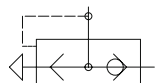
Weight: 0.55 kg

Ordering information:

Quote: QEV13AA3H00S

Options: None



QEV 3/4"**Flow rates:**

$C_v = 10.4/10.8$ USgpm for

1 psi Δp

$K_v = 149$ l/min for 1 bar

(15 psi) Δp

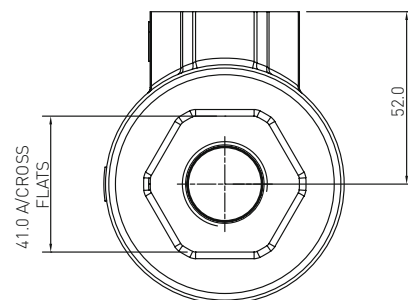
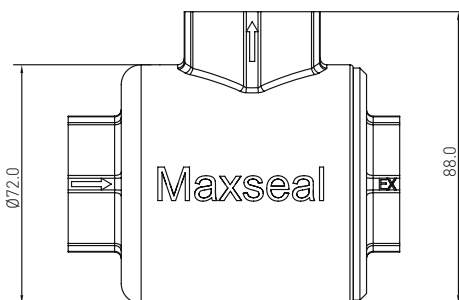
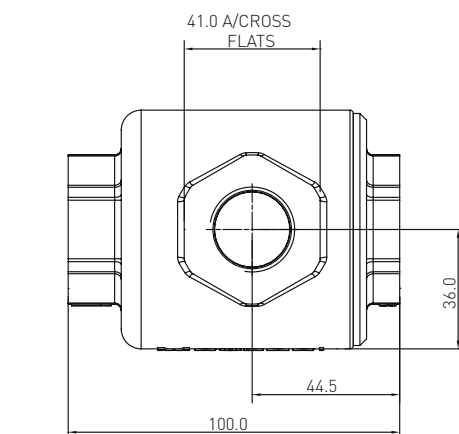
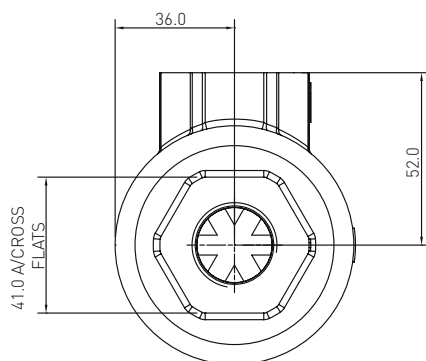
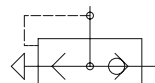
Port size: 3/4"

Weight: 1.48 kg

Ordering information:

Quote: QEV13AA5H00S

Options: None

**QEV 1"****Flow rates:**

$C_v = 10.4/15.4$ USgpm for

1 psi Δp

$K_v = 149/221$ l/min for

1 bar (15 psi) Δp

Port size: 1"

Weight: 1.48 kg

Ordering information:

Quote: QEV13AA6H00S

Options: None

