



Metal-free 2, 3-port solenoid valve

# MEB2/MEG2 Series

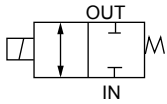
- NC (open when energized), universal
- Working fluid: Water/pure water/chemical liquids
- Port size: Rc1/8



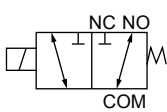
- EXA
- FWD
- HNB/G
- USB/G
- FAB/G
- FGB/G
- FVB
- FWB/G
- FHB
- FLB
- AB
- AG
- AP/AD
- APK/ADK
- DryAir
- EX-XPLNprf
- XPLNprf
- HVB/HVL
- S $\diamond$ B/NAB
- LAD/NAD
- Water-Rela
- NP/NAP/NVP
- SNP
- CHB/G
- MXB/G
- Other valves
- SWD/MWD
- DustColl
- CVE/CVSE
- CCH/CPE/D
- LifeSci
- Gas-Combus
- Auto-Water
- Outdoor
- SpecFld
- Custom
- Ending

## JIS symbol

- MEB2 (2-port)  
: NC (open when energized)



- MEG2 (3-port)  
: Universal



## Specifications

1 MPa  $\approx$  145.0 psi, 1 MPa = 10 bar

Item	MEB2-6				MEG2-6				
Working fluid	Water/pure water/chemical liquids (fluids that do not corrode wetted part materials)								
Proof pressure MPa	0.3 ( $\approx$ 44 psi, 3 bar) (water pressure)								
Working pressure MPa	Conditions	Fluid flow direction	Working pressure range of each port		Conditions	Fluid flow direction	Working pressure range of each port		
			IN	OUT			COM	NC	NO
	IN (+) press	IN $\rightarrow$ OUT	0 to 0.2	0 to 0.1	COM (+) press	COM $\rightarrow$ NO or NC	0 to 0.2	0 to 0.1	0 to 0.1
	OUT (+) press	OUT $\rightarrow$ IN	0 to 0.1	0 to 0.1	NC (+) press	NC $\rightarrow$ COM	0 to 0.1	0 to 0.1	0 to 0.1
	IN (-) press	OUT $\rightarrow$ IN	-0.05 to 0	-0.05 to 0	NO (+) press	NO $\rightarrow$ COM	0 to 0.1	0 to 0.1	0 to 0.1
					COM (-) press	NO or NC $\rightarrow$ COM	-0.05 to 0	-0.05 to 0	-0.05 to 0
Fluid temperature $^{\circ}$ C	0 (32 $^{\circ}$ F) to 60 (140 $^{\circ}$ F) (no freezing)								
Ambient temperature $^{\circ}$ C	0 (32 $^{\circ}$ F) to 50 (122 $^{\circ}$ F)								
Atmosphere	No explosive or corrosive atmospheres								
Valve seat leakage cm $^3$ /min	0 (water pressure)								
Port size	Rc1/8								
Orifice size mm	3.0 or equiv.								
Cv	0.18								
Mounting orientation	Unrestricted								
Weight kg	0.22				0.24				
<b>Electrical specifications</b>									
Rated voltage	24 VDC/100 VAC(50/60 Hz)								
Voltage fluctuation range	$\pm$ 10%								
Power consumption W	5.5								
Starting current A	1 or less								
Leakage current mA	24 VDC: 1 or less, 100 VAC: 6 or less (*1)								
Thermal class	Class 130 (B)								

\*1 : The leakage current from the control circuit must be equal to or less than the values shown in the table.

\*2 : As this product generates noise from incorporating electronic oscillator circuits, use noise countermeasures on the same power line.

\*3 : After the solenoid valve is completely switched OFF, set an interval of 0.5 seconds or more before switching it ON the next time.

## How to order

**ME B 2 - 6 - DC24V**

**A** Number of ports

**B** Orifice size

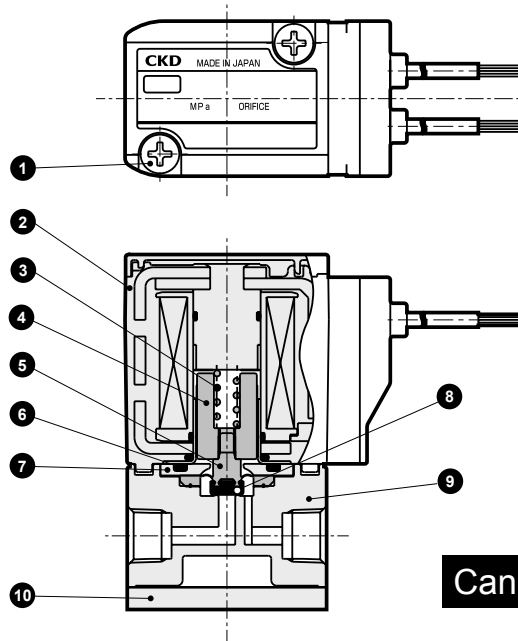
**C** Port size

**D** Rated voltage

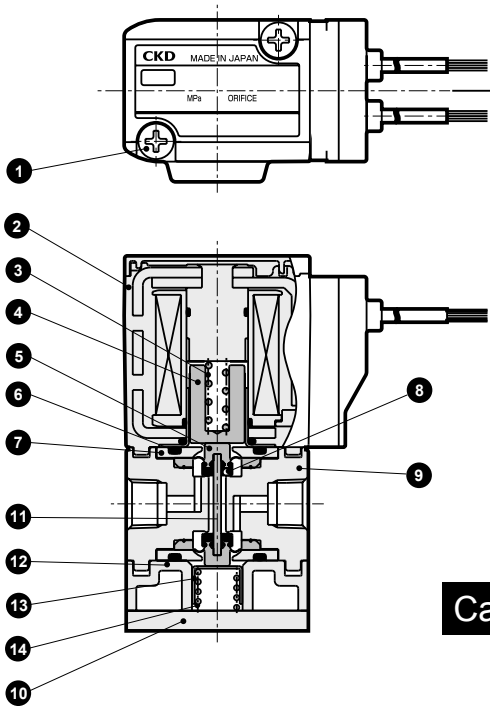
Code	Description
<b>A Number of ports</b>	
<b>B</b>	2-port
<b>G</b>	3-port
<b>B Orifice size</b>	
<b>2</b>	$\phi$ 3
<b>C Port size</b>	
<b>6</b>	Rc1/8
<b>D Rated voltage</b>	
<b>DC24V</b>	24 VDC
<b>AC100V</b>	100 VAC(50/60 Hz)

## Internal structure and parts list

### ● MEB2 (2-port valve)



### ● MEG2 (3-port valve)



No.	Part name	Material	No.	Part name	Material
1	Cross-recessed pan head machine screw	SUSXM7 ;Stainless steel	8	Valve seat	FFKM ;Perfluoroelastomer
2	Coil assembly	Class B molded coil	9	Body	PPS ;Polyphenylene sulfide
3	Spring	SUS304 ;Stainless steel	10	Mounting plate	SUS304 ;Stainless steel
4	Plunger	SUS405 or equiv. ;Stainless steel	11	Rod	Ceramic
5	Diaphragm	PTFE ;Tetrafluoroethylene resin	12	Base	PPS ;Polyphenylene sulfide
6	O-ring	FKM ;Fluoro rubber	13	Spring holder	SUS304 ;Stainless steel
7	Diaphragm adaptor	PPS ;Polyphenylene sulfide	14	Spring	SUS304 ;Stainless steel

EXA  
FWD  
HNB/G  
USB/G  
FAB/G  
FGB/G  
FVB  
FWB/G  
FHB  
FLB  
AB  
AG  
AP/  
AD  
APK/  
ADK  
DryAir  
EX-  
XPLNprf  
XPLNprf  
HVB/  
HVL  
S B/  
NAB  
LAD/  
NAD  
Water-  
Rela  
NP/NAP/  
NVP  
SNP  
CHB/G  
MXB/G  
Other valves  
SWD/  
MWD  
DustColl  
CVE/  
CVSE  
CCH/  
CPE/D  
LifeSci  
Gas-  
Combus  
Auto-  
Water  
Outdoor  
SpecFld  
Custom  
Ending

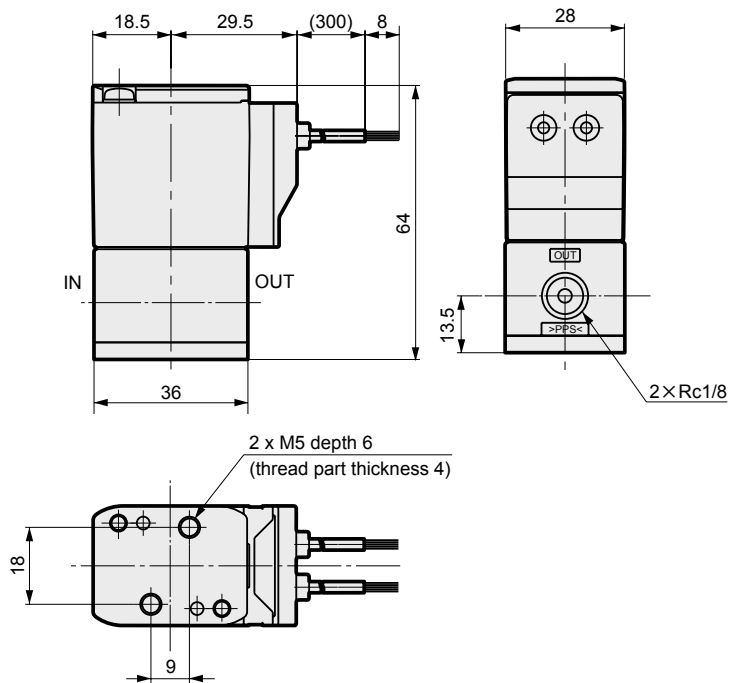
# MEB2/MEG2 Series



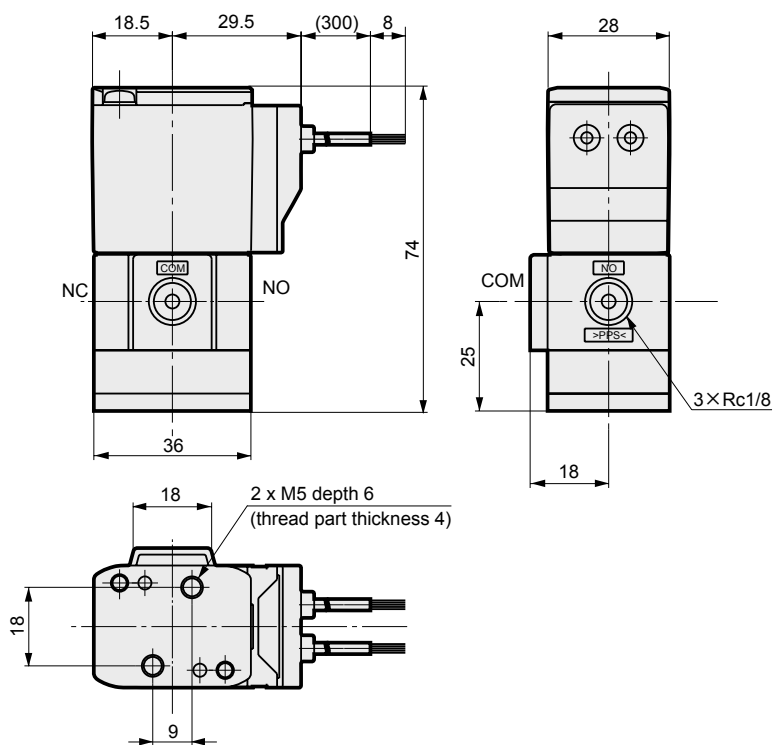
## Dimensions

- EXA
- FWD
- HNB/G
- USB/G
- FAB/G
- FGB/G
- FVB
- FWB/G
- FHB
- FLB
- AB
- AG
- AP/AD
- APK/ADK
- DryAir
- EX-XPLNprf
- XPLNprf
- HVB/HVL
- S $\diamond$ B/NAB
- LAD/NAD
- Water-Rela
- NP/NAP/NVP
- SNP
- CHB/G
- MXB/G
- Other valves
- SWD/MWD
- DustColl
- CVE/CVSE
- CCH/CPE/D
- LifeSci
- Gas-Combus
- Auto-Water
- Outdoor
- SpecFld
- Custom
- Ending

### ● MEB2 (2-port valve)



### ● MEG2 (3-port valve)



\* When 2 x M5 for mounting is 6 mm or more from the bottom of the mounting plate, the screw cuts into the body or base, leading to cracking. The screw end must be 6 mm or less from the bottom of the mounting plate.