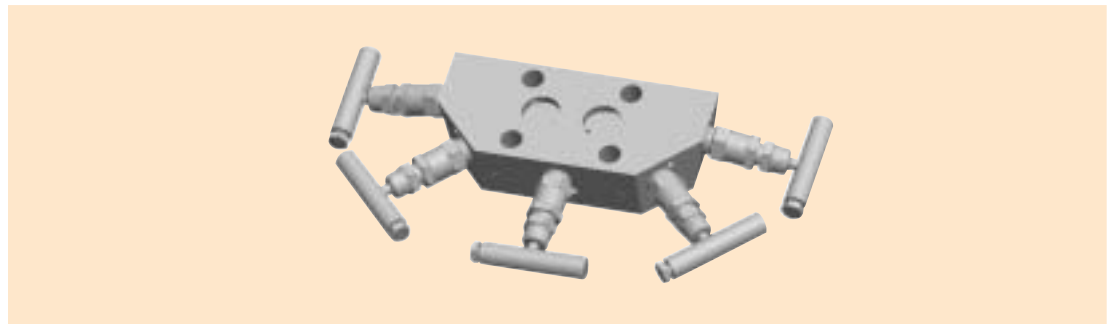


# Kerotest KMC5P Integral Manifold



## Product Brief

The KMC5P is a five-valve manifold designed for use with specific Rosemount transmitters, Models 3051C, 3051P, 2024 and 3095 Multivariable transmitters. This manifold is primarily intended for power plant applications. See the KMC5G catalog for products for gas applications and the KMC2 catalog for other general application products. The manifold consists of two block valves, an equalizing valve and two integral test/vent valves.

## Features/Benefits

- **Bubble-tight shutoff.** Every valve is 100% tested.
- **Space-saving design.** One compact valve replaces five. Much fewer connections means less leak paths means **less fugitive emissions.**
- **Cost-saving design.** Less parts means lower cost in the order of 20-30% compared to conventional two-valve installation.
- **Stem threads isolated** from the process fluid, eliminating process fluid contamination, lubricant washout and thread corrosion.
- **Mirror finish stems** enable smooth stem operation and extended packing life.
- **Adjustable packing** adjusts easily, increasing valve life and reducing downtime for packing replacement.
- **Multiple packing options** available including Teflon® and GRAFOIL®.
- **Ball-tipped stem design** prevents seat galling during valve closure.
- **Dust covers and bonnet locking pins** provided for each valve for added safety and reduced contamination of the bonnet assembly.

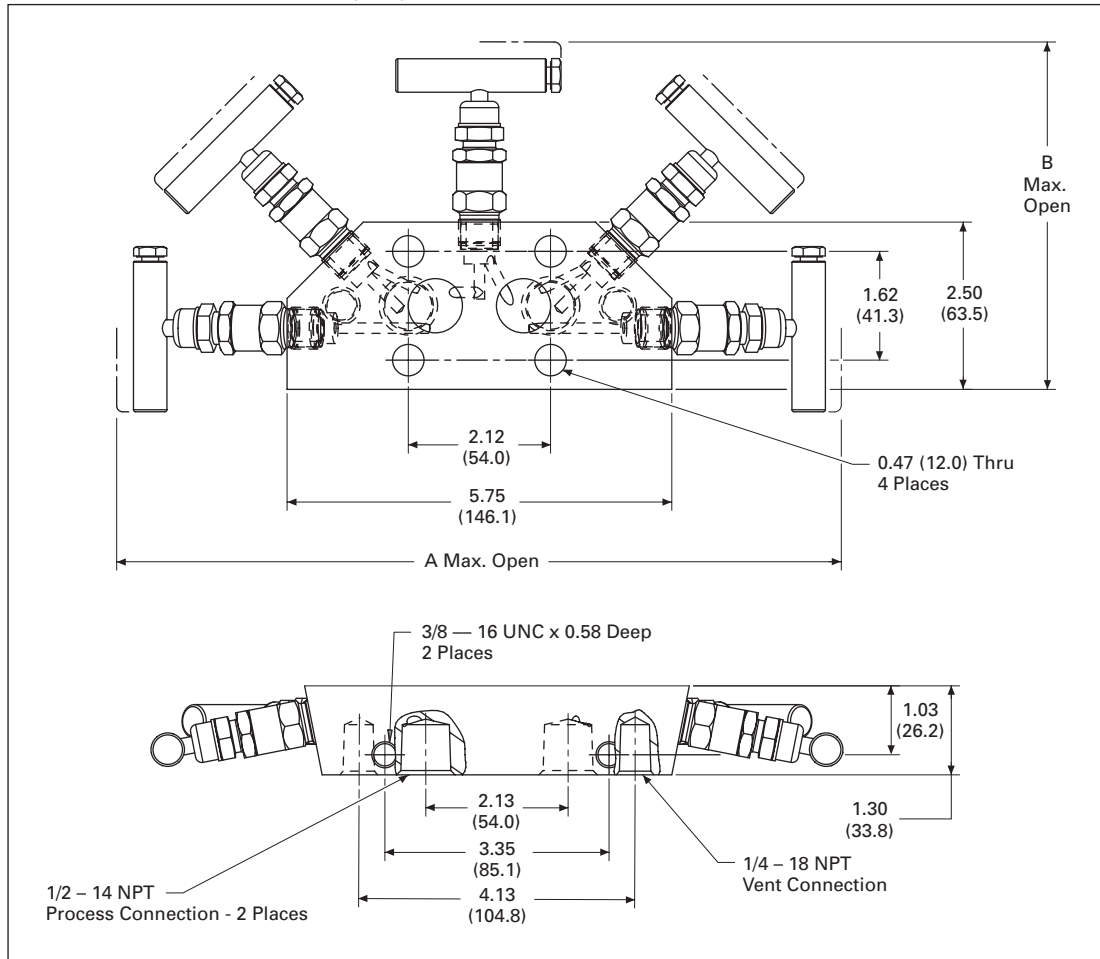


*An Employee Owned Total Quality Management Company*

# Kerotest KMC5P Integral Manifold

## Specifications

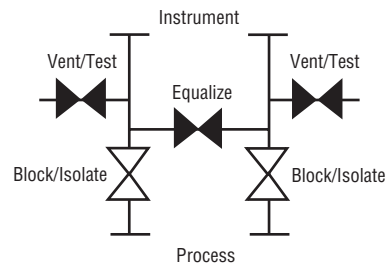
KMC5P Dimensions in Inches (mm)



### Dimensions in Inches (mm)

Valve ①	A	B
Teflon Packed	10.95 (278.1)	5.10 (129.5)
GRAFOIL/Low Emissions Graphite Packed	12.40 (315.0)	5.75 (146.1)

- ① Approximate valve weight: 5.3 lb (2.4 kg).  
0.156-inch (4.0 mm) diameter orifice size.  
Cv = .36, full open.



# Kerotest KMC5P Integral Manifold

## Standard Materials

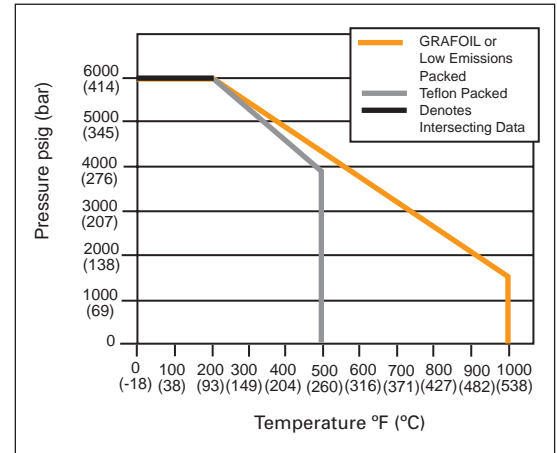
Valve	Body and Bonnet	Stem and Ball	Packing
SS	A479-316 316	A276-316 316	Teflon
SG ①	A479-316 316/Monel®	Monel 400 Monel K-500	Teflon
SG ②	Hastelloy® C-276	Hastelloy C-276 Stellite	Teflon

## Pressure and Temperature Ratings

Valve	Ratings
SS, SG ①, SG3 ②	6000 psig at 200°F (414 bar at 93°C) 4000 psig at 500°F (276 bar at 260°C)

- ① SG (Sour Gas) meets the requirements of NACE MR0175-2002.  
② SG3 (Sour Gas) meets the requirements of NACE MR0175-2003.

## Pressure vs. Temperature



## Ordering Information – KMC (Rosemount® Coplanar™ Only)

# KMC5P

H  
1.

I  
2.

S  
3.

-

4  
4.

-

BL  
5.

### 1. Packing

V – Teflon  
H – GRAFOIL  
E – Low Emissions Graphite

### 2. Seat

I – Integral (Body Material)

### 3. Body Material

S – 316 SS  
J – Hastelloy

### 4. End Connection

4 – 1/2-Inch FNPT

### 5. Options

AL – Low Temperature Lubricant (Low Temperature Service -70°F) Not Available for CS Valves  
AM – KMC Mount Kit for 2-Inch Pipestand Mounting  
BL – Bonnet Lock Device

CB – Ceramic Ball Stem Tip  
CL – Cleaned for Chlorine Service  
OC – Cleaned for Oxygen Service  
HD – Hydrostatic Testing  
SG – Sour Gas Meets the Requirements of NACE MR0175-2002  
SG3 – Sour Gas Meets the Requirements of NACE MR0175-2003  
ST – Stellite Ball Stem Tip  
SP – Special Requirements - Please Contact Factory

**Note:** Bolts and gaskets are not included. Contact factory if bolts and gaskets are required.

# Kerotest KMC5P Integral Manifold

## Ordering Information

<b>KMC5PHP</b> <u>S</u> - <u>4</u> - <u>XP</u> - <u>SP</u>			
	<b>1.</b>	<b>2.</b>	<b>3.</b>
<b>Style</b>	<b>2. End Connection</b>	<b>3. Options</b>	
<b>KMC5PHP</b> – Coplanar 5-Valve (Power) ( $\Delta P$ )	<b>4</b> – 1/2-Inch FNPT	<b>AM</b> – KMC Mount Kit for 2-Inch Pipestand Mounting	
<b>1. Body Material</b>		<b>SP</b> – Special Requirements – Please Contact Factory	
<b>S</b> – 316 SS			

**Note:** All manifolds come standard with GRAFOIL packing, integral seats, bonnet locks, and are subjected to hydrostatic testing.

Manifold ratings:

6000 psig @ 100°F (414 bar @ 38°C)

2915 psig @ 1000°F (201 bar @ 538°C)

Bolts and gaskets are not included. Contact factory if bolts or gaskets are required.

KMC ASME B31.1 and B31.3 meet MSS-SP-105.

*All product names referenced herein are trademarks of their respective companies.*

---

## Kerotest Manufacturing Corp.

5500 Second Avenue, Pittsburgh, PA 15207

(412) 521-7688 FAX: (412) 521-7853

email: sales@kerotest.com

www.kerotest.com