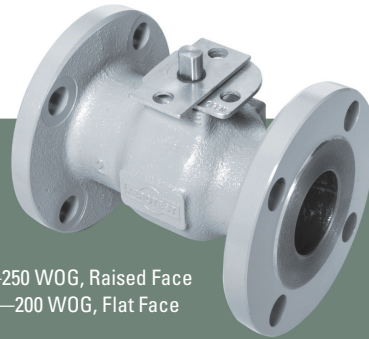


Kerotest DUCTILEBALL™

Ductile Iron Ball Valve



Class 150—250 WOG, Raised Face
Class 125—200 WOG, Flat Face

Product Brief

The Kerotest Ductileball line of maintenance-free ductile iron ball valves are built to the same high standards as every product we have manufactured for the gas distribution industry since 1909.

Features/Benefits

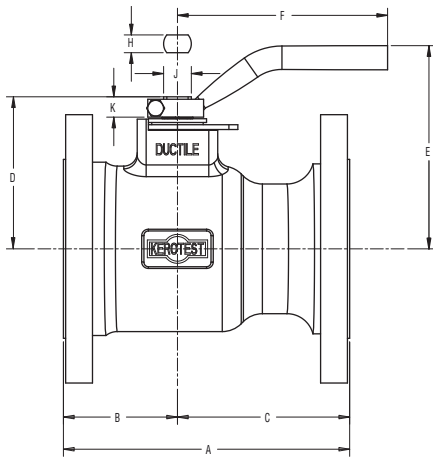
- **Quarter turn** operation.
- **Variety of port sizes:**
Standard—2", 3", 4" and 6"
Reduced—2"
- **Long life:** Low operating torque.
- **Durability:** Blowout proof stem and dual stem o-ring seals.
- **Carbonized PTFE (Teflon®) seat seals** for leak-proof shutoff.
- **Proven seat design** ensures long life.
- **Maintenance free:** No lubrication required to maintain positive shut-off.
- **Safety:** Standard stainless-steel locking plate allows valve to be locked in full-open or full-close position to ensure safe operation.



An Employee-Owned Company

Kerotest DUCTILEBALL™ Ductile Iron Ball Valve

Dimensions



Valve Sizes and Dimensions (Approximate in Inches)

Size	A	B	C	D	E	F ^①	H	J	K	Port Dia.	Weight in (Lb)
2" RP	7.0	3.5	3.5	3.2	4.6	7.6	.438	.588	.64	1.3	16
2" SP	7.0	3.5	3.5	3.5	4.8	7.6	.438	.588	.64	1.6	19
3"	8.0	3.2	4.8	4.3	5.7	9.7	.497	.775	.67	2.4	30
4"	9.0	3.4	5.6	5.4	6.5	12.7	.623	.875	.63	3.2	48
6"	10.5	4.1	6.4	6.2	7.2	18.8	.748	.937	.63	4.3	78

① Handle optional.

Ordering Code

Class 150—250 WOG,
Raised Face (RF), Flanged End

Size	Model Number	Part Number
2" RP	2DB250-RF-RP	45001000
2" SP	2DB250-RF-SP	45001009
3"	3DB250-RF	45001001
4"	4DB250-RF	45001002
6"	6DB250-RF	45001003

Class 125—200 WOG,
Flat Face (FF), Flanged End

Size	Model Number	Part Number
2" RP	2DB200-FF-RP	45001004
2" SP	2DB200-FF-SP	45001010
3"	3DB200-FF	45001005
4"	4DB200-FF	45001006
6"	6DB200-FF	45001007

Materials of Construction

Component	Material
Body	Ductile Iron, ASTM A395, Class 60-40-18, Fully Annealed
Ball	Stainless-Steel, AISI Type 304
Seat Ring	Teflon, Carbon Filled
Seat Ring Seal	BUNA-N
Support Ring	Stainless-Steel, AISI Type 316
Spring Washer	Alloy Steel, 6150
End Adapter	Ductile Iron, ASTM A395, Class 60-40-18, Fully Annealed
Adapter Seal	BUNA-N
Stem	Stainless-Steel, AISI Type 304
Stop/Lock Plate	300 Series Stainless-Steel
Stationary Lock Plate	300 Series Stainless-Steel
Spacer	Teflon
Retaining Ring	Carbon Steel
Thrust Washer	Teflon, Carbon Filled
Stem Seal	BUNA-N
Stem Bearing	Brass
Handle (Optional)	Carbon Steel
Handle Screw (Optional)	18-8 Stainless-Steel

All product names referenced herein are trademarks of their respective companies.



Kerotest Manufacturing Corp.

5500 Second Avenue • Pittsburgh, PA 15207
412.521.4663 • Fax: 412.521.5990
www.Kerotest.com • Sales@Kerotest.com