

DE/3M-3

The DE/3M-3 is an analog positioner available in a pneumatic and electro-pneumatic version. The positioner has a heavy duty design making it suitable for use in very harsh conditions. It is used as the control part of the pneumatic valve set in oil and gas, refining, chemical, power, metal production and other fields with automated systems. The pneumatic version accepts a 3-15 psi (0.2-1 bar) signal and the electro-pneumatic version a 4-20 mA signal.

When using the electro-pneumatic version an I/P converter is installed on the pneumatic positioner which allows an electric signal to pilot the positioner. It is based on the balanced-forces principle; air distribution to the actuator chambers is executed by an internal spool.

The DE/3M-3 is designed to be used for applications on linear actuators with a stroke length of up to 300mm. This positioner is double acting but can also be used as single acting if required.



Heavy duty design

Key features and benefits

- > Heavy duty design
- > High reliability
- > Split range signal
- > Feedback system lever/arm free
- > Suitable for:
 - Standard, offshore, sandstorm, copper free ambient condition
 - Single and double acting actuators
 - Low and high ambient temperature

Accessories

- > Intrinsically safe electro-pneumatic version available for ATEX execution
- > Pressure gauges



DE-3M-3 Pneumatic version

Technical specifications

Housing materials

Anodized Aluminum

Operating pressure

P min = 2.5 bar

P max = 7 bar

Design pressure = 10 bar

Static air consumption

0.4 Nm³/h (0.25 SCFM) at 400kPa (60 psi)

Static air consumption (I/P converter)

+0.09 Nm³/h (0.06 SCFM)

Feeding connection

ND 1/4"

Output connection

ND 1/4"

Pilot signal connection

1/8" NPTF

Electrical connection for I/P version

ND 1/2" NPTF

Enclosure degree of protection

IP65

CV max low flow

ND 1/4" Inlet = 0.12

ND 1/4" Outlet = 0.12

Operating temperature

-20°C / +70°C

-40°C / +85°C available on request

Signal

3-15 psi

4-20 mA

Sensitivity

0.2% of signal range

Linearity

1% of the full stroke

Hysteresis

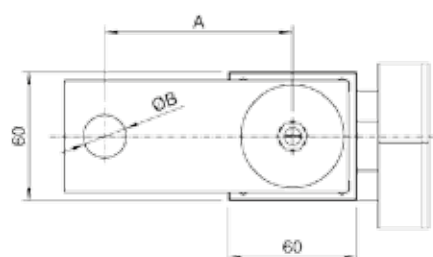
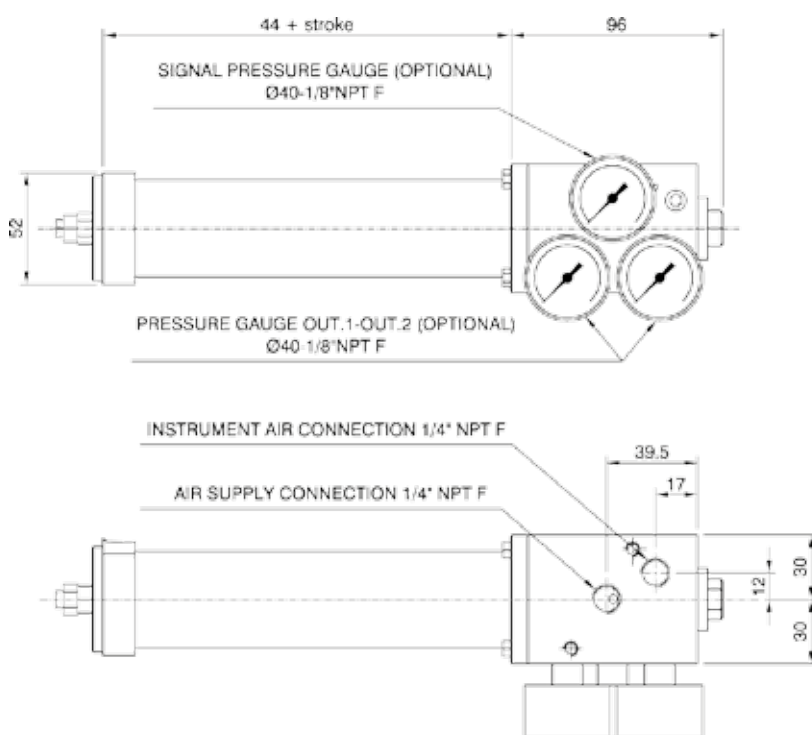
0.5% of full stroke

Weights

DE/3M = 1.8 kg

DE/3M-EP = 2.3 kg

Dimensional drawing



DN	63	100	125	160
A	67	87.25	99.5	123
B	16	20	27	28

Standard stroke: 125, 150, 200