

2/2-Way, Direct-acting, G1/8 - M5



Advantages/Benefits

- ▶ Normally closed
- ▶ Body materials: brass, stainless steel
- ▶ Short response time
- ▶ Compact design

Design/Function

Type 200 is a direct-acting plunger-type solenoid valve normally closed by spring action (circuit function A).

When energized, the solenoid armature is drawn against a spring to open the valve.

The solenoid epoxy encapsulation efficiently dissipates the heat generated by the coil.

Applications

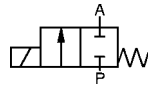
- Neutral gases and liquids
- Pneumatic control
- Vacuum
- Shut-off, dosing, filling, ventilating
- Small-scale instrument, laboratory and measurement technology
- Gas control, welding technology

burkert
Easy Fluid Control Systems

Technical Data

Circuit Function

A 2/2-way valve,
normally closed



Body Materials

Brass body and seat
Stainless steel
Valve internals 1.4105, 1.4571

Specifications

Orifice DN	Kv-Value Water	Q _{Nn} -Value Air ¹⁾	Pressure Range ²⁾		Weight
			4 Watt AC	DC	
[mm]	[m ³ /h]	[l/min]	[bar]	[bar]	[kg]
1,2	0,045	48	0-21	0-12	0,12
1,6	0,06	65	0-12	0- 6	0,10
2,0	0,11	120	0- 8	0- 4,5	0,12
2,4	0,13	140	0- 6	0- 3	0,09

¹⁾ Measured with 6 bar upstream pressure and 1 bar pressure drop across the valve at +20 °C. ²⁾ Also suitable for vacuum.

All pressures quoted are gauge pressures with respect to the prevailing atmospheric pressure.

Operating Data (Valve)

Seal Materials/Fluids Handled/Temp. Range

NBR Neutral fluids, e.g. compressed air, town gas,
water, hydraulic oils -10 to +90 °C

FPM hot air, oxygen, per-solutions, hot oils,
oils with additives -10 to +100 °C

For more detailed information please refer to resistance
chart (Leaflet-No. 1896009).

Max. ambient temperature. +55 °C

Max. viscosity approx. 21 mm²/s

Response times opening 5 - 18 ms
closing approx. 8 ms

Times measured at outlet A from switching on until
pressure rise to 90 % / pressure drops to 10 % at a max.
working pressure of 6 bar.

Port connection G 1/8, M5

Operating Data (Actuator)

Operating voltages AC 24, 230, 240/50 Hz
DC 12, 24 V/=

Voltage tolerance ± 10%

Power consumption AC 9 VA (inrush),
6 VA/4 W (hold)
DC 4 W
2 Watt-version
6 VA (inrush),
5 VA/2 W (hold)

Duty cycle 100 % continuously rated

Cycling rate approx. 1000 c.p.m.

Rating with plug Type 1051 or
cable IP 65

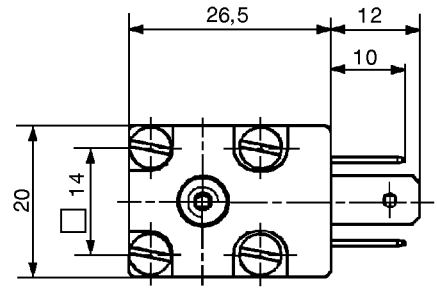
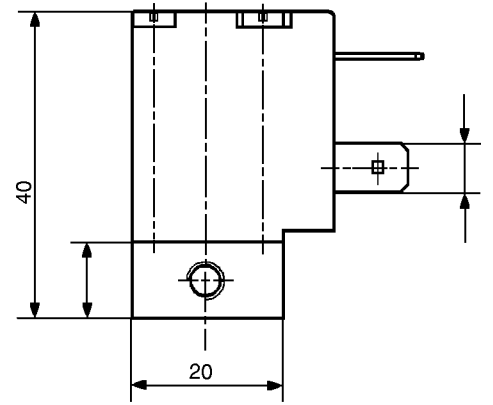
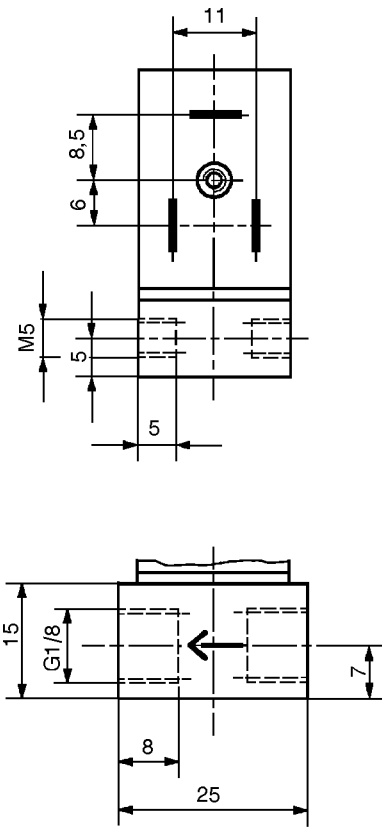
Installation / Accessories

Installation as required, but preferably
with solenoid system upright

Electrical connection

- cable connection without cable plug (supplied as standard)
- moulded-in cable on request
- 2 or 3 moulded-in flying leads on request

Dimensions in mm



DTS 1000010912 EN Version: A Status: RL (released | freigegeben | validé) printed: 22.09.2017