

Dia-Seal Piston

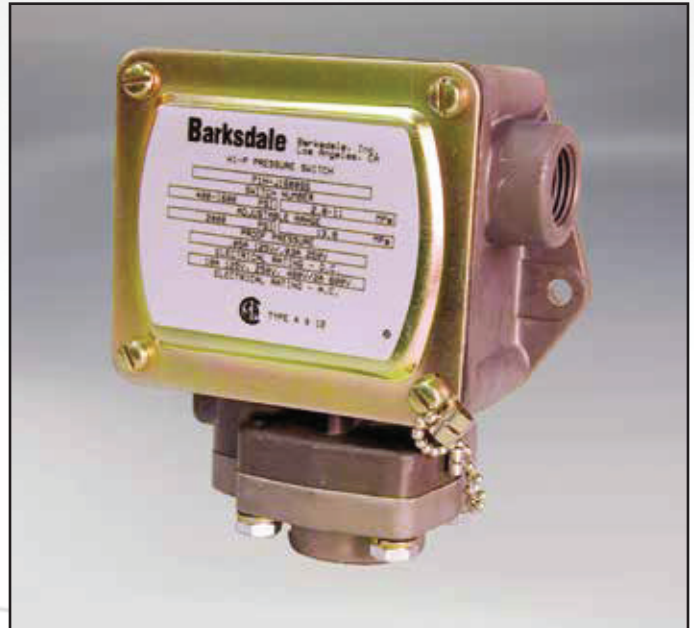
P1H Series

Features

- ▶ Superior resolution
- ▶ High reliability
- ▶ Oil & dust tight
- ▶ Extremely versatile
- ▶ NEMA 4 & 13
- ▶ CSA approved

Applications

- ▶ Pump & compressor monitoring
- ▶ Air proving in HVAC systems
- ▶ Irrigation systems
- ▶ Engine monitoring
- ▶ Machine tools
- ▶ General industrial applications

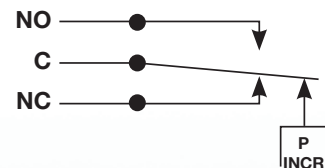


General Specifications*

Electrical Characteristics:	All models incorporate Underwriters Laboratories, Inc. and CSA Listed single pole double throw snap-action switching elements
Accuracy:	± 2% of the adjustable range
Switch:	Single pole double throw (SPDT) snap action; single circuit (see order key for ratings)
Wetted Parts:	
Process Fitting:	Anodized aluminum (standard)
Diaphragm:	Buna N
Enclosure:	Anodized aluminum
Electrical Connection:	Internal screw terminals via 1/2" NPT conduit connector
Enclosure Ratings:	NEMA 4, 13
Pressure Connection:	1/4" NPT female (standard)
Approvals:	
CSA:	Class 3231 02, File No. LR22355
PED (European):	Compliant to PED 97/23/EC
Temperature Range:	
Operating:	-20° to +165°F (-29° to +74 °C) Hermetic Div. 2 models: -4° to +140°F (-20° to +60 °C)
Storage:	-40° to +200°F (-40° to +93°C)

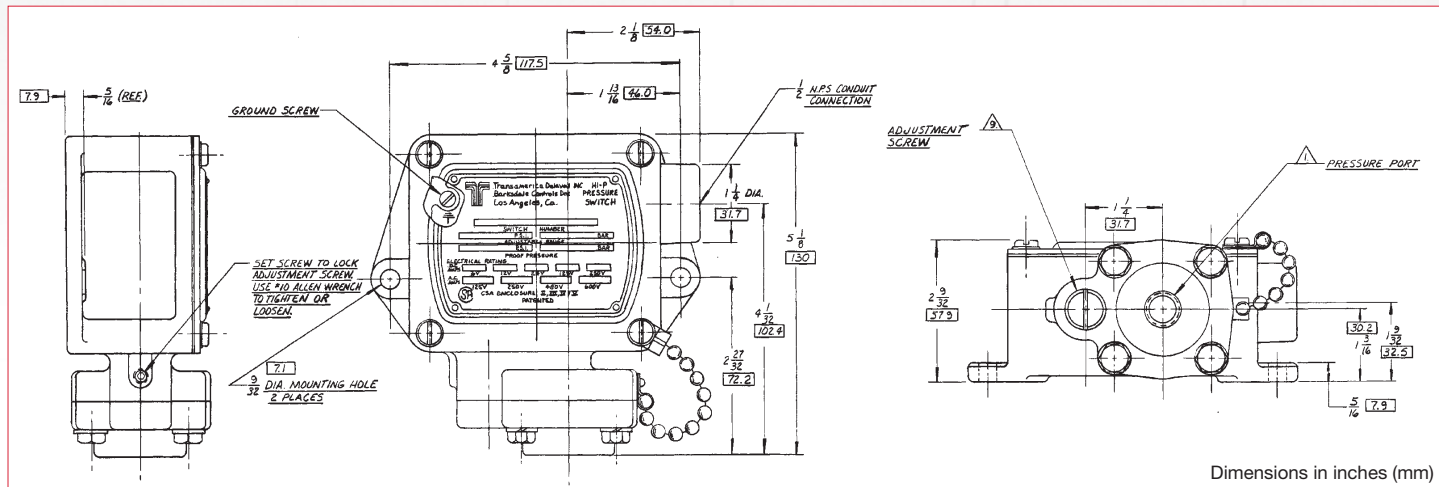
Adjustment Instructions:	Loosen setscrew with a #10 allen wrench. With screwdriver, turn adjustment screw clockwise to increase and counterclockwise to decrease the actuation point. Tighten setscrew after desired setting is reached.
Options:	- NEMA 4X - Hermetically sealed limit switch - Factory preset - CSA approval
Shipping Weight:	3.75 lbs. approximate

Wiring Diagram



* See product configurator for additional options.

Technical Drawing



Order Number Key / Options

Example	P1H	-B	340	SS	-V	-P2
---------	-----	----	-----	----	----	-----

* Highlighted options represent those most frequently used. Select these common options for improved availability. (5/21)

Prefix

H Hermetically sealed limit switch option - Class I, Division II (requires HH limit switch)

Enclosure

P1H NEMA 4 & NEMA 13 enclosure

Limited Switch¹

-B	10 amps @ 125/250/480 VAC; 2 amps @ 600 VAC; 0.05 amps @ 125 VDC; 0.03 amps @ 250 VDC (standard for 30, 85, and 340 ranges)
-F	10 amps @ 125/250/480 VAC; 2 amps @ 600 VAC; 0.4 amps @ 125 VDC; 0.2 amps @ 250 VDC
-H	10 amps @ 125/250 VAC; 3 amps @ 480 VAC (standard for 600 range)
-J	10 amps @ 125/250 VAC; 3 amps @ 480 VAC with elastomer boot (standard for 1600 range)
-K	10 amps @ 125/250/480 VAC; 2 amps @ 600 VAC; 0.05 amps @ 125 VDC; 0.03 amps @ 250 VDC (with boot)
-M	10 amps @ 125/250 VAC; 3 amps @ 480 VAC; 0.5 amps @ 125 VDC; 0.25 amps @ 250 VDC
-GH	1 amp @ 125 VAC gold contacts
-HH	Hermetically sealed; 5 amps @ 125/250 VAC

Pressure Range

	Adjustable Range				Approx. Deadband ² (Actuation Value)	Proof Pressure
	Decreasing - psi (bar)		Increasing - psi (bar)			
	Min	Max	Min	Max	psi (bar)	psi (bar)
30	.5 (.03)	28 (1.9)	1.5 (.1)	30 (2)	.4 - 2 (.03 - .13)	2000 (133)
85	3 (.2)	78 (5.2)	4.5 (.3)	85 (5.7)	.8 - 7 (.05 - .5)	2000 (133)
340	6 (.4)	318 (21)	10 (.6)	340 (23)	2 - 22 (.13 - 1.5)	2000 (133)
600	25 (1.7)	583 (39)	27 (1.8)	600 (40)	2 - 17 (.13 - 1.1)	2000 (133)
1600	400 (27)	1520 (101)	480 (32)	1600 (107)	20 - 80 (1.3 - 5.3)	2000 (133)

Options

Blank	1/4" NPT (standard)
-P2	1/2" NPT pressure fitting (only available in stainless steel)
-FX	NEMA 4X enclosure
-Z1	Cleaned for oxygen service*
-Sxxx	Factory preset (consult factory)

* Not available on hermetic Div 2 models

Diaphragm/O-Ring

Blank	Buna-N diaphragm
-T	Teflon diaphragm
-V	Viton® diaphragm

Pressure Fitting

Blank	Anodized aluminum, 1/4" NPT
SS	Stainless steel, 1/4" NPT

NOTES:

1 Consult sales drawing for specific deadband values
2 Deadband values indicated when used with the "standard" limit switch