

| 11 | Ball Casing | Stainless Steel | ボールケーシング | SUS304 | 1 |
|-----|---------------|------------------|----------|--------------|------|
| 10 | Ball(Blue) | Synthetic Resin | ボール(青) | MA | 1 |
| 9 | Ball(White) | Synthetic Resin | ボール(白) | PP | 1 |
| 8 | Ball(Red) | Synthetic Resin | ボール(赤) | PP | 1 |
| 7 | Spring Washer | Carbon Steel | ばね座金 | SWRH | 4 |
| 6 | Nut | Carbon Steel | 六角ナット | S25C or S45C | 4 |
| 5 | Bolt | Carbon Steel | 六角ボルト | SCM435 | 4 |
| 4 | Gasket | Non-Asbestos | ガスケット | Non-Asbestos | 4 |
| 3 | Glass | Tempered Glasses | ガラス | 強化ガラス | 2 |
| 2 | Cover | Ductile Iron | ふた | FCD450 | 2 |
| 1 | Body | Ductile Iron | 本体 | FCD450 | 1 |
| No. | Name of Parts | Material | 部品名 | 材質 | Q.TY |

(mm)

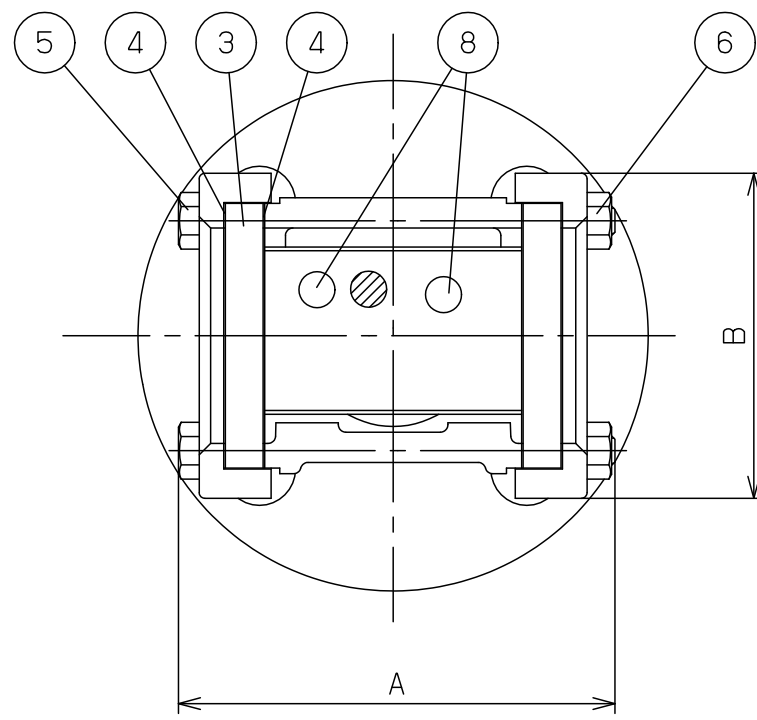
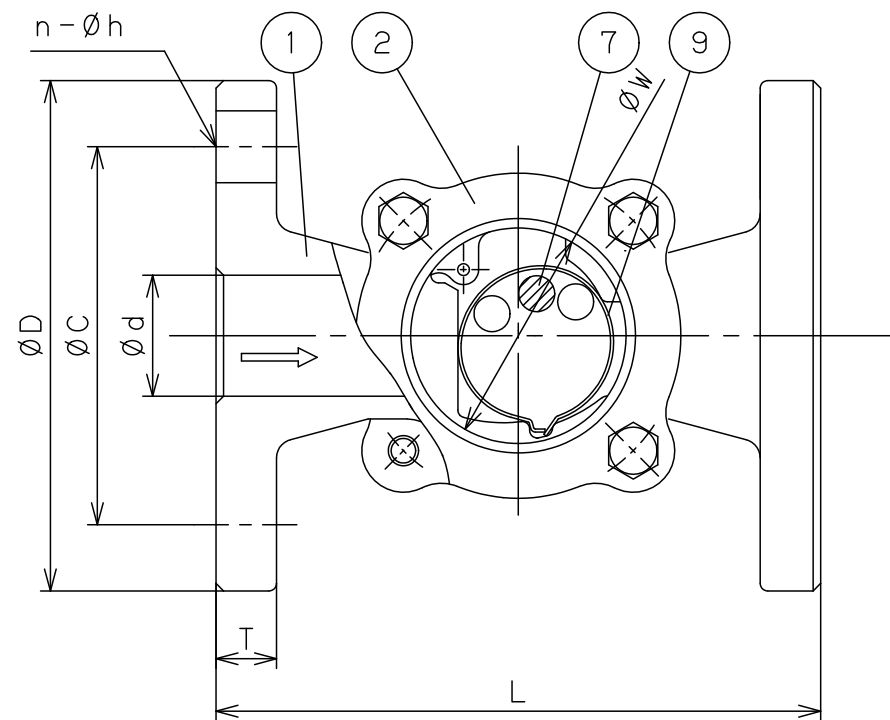
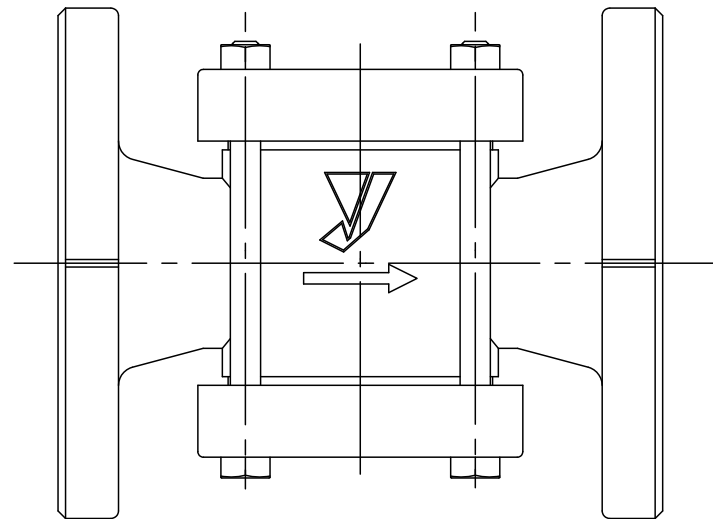
| Size | L | A | B | W | Flange JIS 10KFF | | | | | Weight (kg) |
|------|-----|------|----|----|------------------|-----|----|----|------|-------------|
| | | | | | d | D | C | T | n-h | |
| 15A | 130 | 79 | 55 | 35 | 15 | 95 | 70 | 12 | 4-15 | 2.2 |
| 20A | 130 | 79 | 55 | 35 | 20 | 100 | 75 | 14 | 4-15 | 2.6 |
| 25A | 150 | 99.5 | 70 | 44 | 25 | 125 | 90 | 14 | 4-19 | 4.1 |

| Specification | |
|---------------|-----|
| Fluid | |
| Press. | MPa |
| Temp. | °C |

TYPE SB-1F SIGHT GLASS
ボール式サイトグラス

| | |
|-------------|-------------|
| Approval | M. Kume |
| Check | M. Kume |
| Drawing | Y. Aoyama |
| Drawing No. | Y-1061-6505 |
| Date | 1 JUL.2010 |

Joshitake
INC.



| | | | | | |
|-----|---------------|------------------|----------|--------------|------|
| 9 | Ball Casing | Stainless Steel | ボールケーシング | SUS304 | 1 |
| 8 | Ball(White) | Synthetic Resin | ボール(白) | PE | 2 |
| 7 | Ball(Red) | Synthetic Resin | ボール(赤) | PP | 1 |
| 6 | Nut | Carbon Steel | 六角ナット | S45C | 4 |
| 5 | Bolt | Carbon Steel | 六角ボルト | SCM435 | 4 |
| 4 | Gasket | Non-Asbestos | ガスケット | Non-Asbestos | 4 |
| 3 | Glass | Tempered Glasses | ガラス | 強化ガラス | 2 |
| 2 | Cover | Ductile Iron | ふた | FCD450 | 2 |
| 1 | Body | Ductile Iron | 本体 | FCD450 | 1 |
| No. | Name of Parts | Material | 部品名 | 材質 | Q.TY |

| Size | L | A | B | W | Flange JIS 10KFF | | | | | Weight (kg) |
|------|-----|-------|-----|----|------------------|-----|-----|----|------|-------------|
| | | | | | d | D | C | T | n-h | |
| 32A | 160 | 115.5 | 86 | 57 | 32 | 135 | 100 | 16 | 4-19 | 5.9 |
| 40A | 170 | 115.5 | 86 | 57 | 40 | 140 | 105 | 16 | 4-19 | 6.2 |
| 50A | 200 | 147 | 114 | 73 | 50 | 155 | 120 | 16 | 4-19 | 9.5 |

| Specification | |
|---------------|-----|
| Fluid | |
| Press. | MPa |
| Temp. | °C |

TYPE SB-1F SIGHT GLASS
ボール式サイトグラス

| | |
|-------------|-------------|
| Approval | M. Kume |
| Check | M. Kume |
| Drawing | Y. Aoyama |
| Drawing No. | Y-1061-6505 |
| Date | 2 JUL.2010 |

