

QUANTUM™ LINEAR CONTROL MONITORS

FLAMEPROOF – ATEX/IEC

The Quantum 2800 combines the functionality of an flameproof junction housing, position switches and Falcon solenoid valves to provide cost-effective control monitoring of linear valves



FEATURES

- Flameproof design meeting a wide range of worldwide approvals.
- Quantum enclosures integrate position sensors and low power solenoid valves into a single unit.
- Solenoid coils integrated within Quantum housing.
- Choice of factory pre-wired 3/2 and 5/2 way Falcon solenoid valves.
- Solenoid valves with a choice of C_v ratings and coil voltage.
- Factory pre-wired SPDT hermetically sealed proximity switches provide labor savings for position sensing of smaller valves.
- Aluminum enclosures with ultra-low copper content (0.2% maximum) ensure robust performance in corrosive environments.
- Rugged stainless steel enclosure option.
- Conduit entries and numbered terminal strip provided for convenient integration of a solenoid valve.
- Easy back-wiring of 316 Silver Bullet sensors to accommodate position sensing of large valves.
- Magnetic triggering bolts included with every unit.
- Optional adjustable triggering system available in Delrin® or stainless steel.
- IP rated plugs certified where applicable.

TECHNICAL DATA

Agency approvals

Area classification (ATEX/IEC)

2800 Series

Ex II 2 G D Exd IIC T6 Gb

Ex tD A21 IP6X T°C

Enclosure standards (IEC)

2800 Series

IP66/67/68

Switches

2800 Series

SPDT hermetically sealed proximity switches

Enclosures

2800 Series

Aluminum

Stainless steel

Falcon solenoid valves

C_v

Choice of 1.1, 3.5

Materials

Aluminum and stainless steel

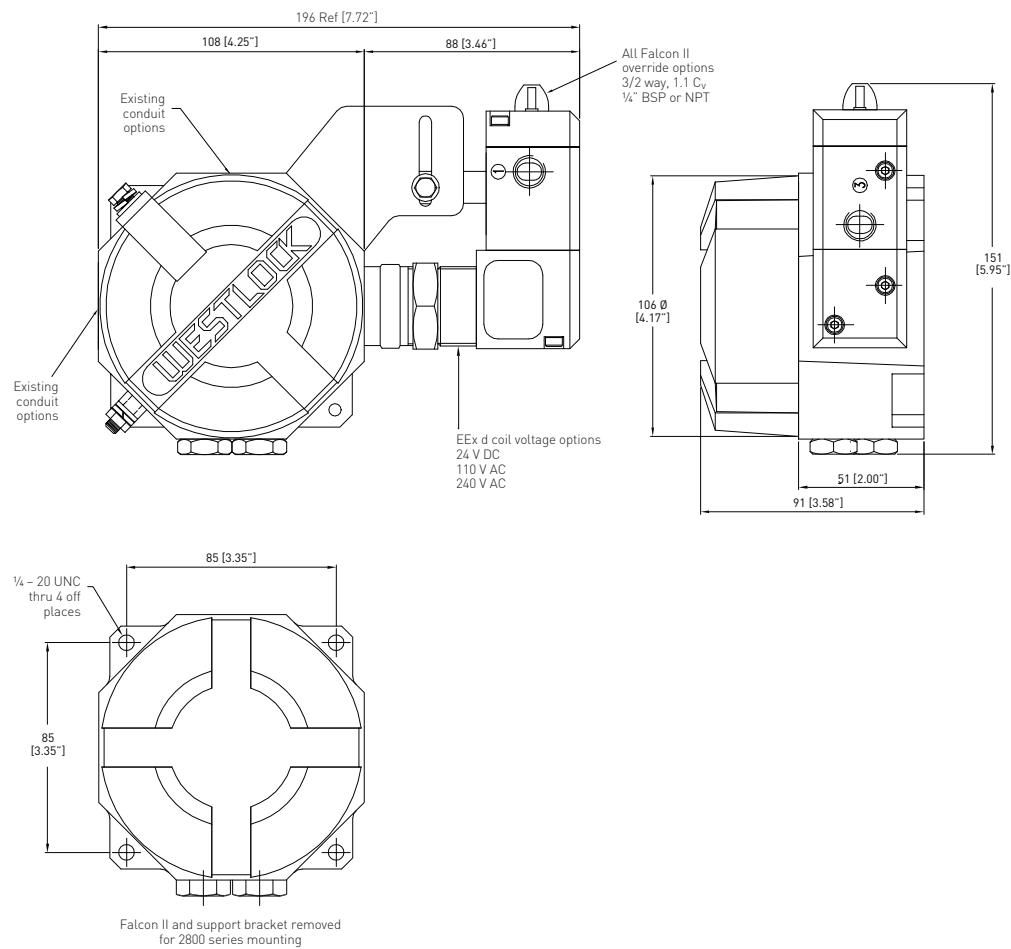
GENERAL APPLICATION

Quantum control monitors combine consistent and accurate valve monitoring with the control of linear valves using integrated position sensors and low power solenoid valves in a single compact unit.

QUANTUM™ LINEAR CONTROL MONITORS

FLAMEPROOF – ATEX/IEC

2800 SERIES DIMENSIONS



Dimensions in mm, imperial dimensions (inches) in parenthesis

TECHNICAL SPECIFICATIONS

Materials of construction

Enclosure	Aluminum with powder coat finish Stainless steel with electropolished finish
Temp. range	-30°C to +85°C
Operational life	600,000 cycles (full rated load)
Sensor actuation	Ferromagnetic (stainless steel encapsulated)
Sensor distance	2.54 mm end sensing
Operating time	3.0 ms
Repeatability	0.13 mm
Hysteresis	0.76 mm

Available switches

	SPDT (hermetically sealed proximity type) switches with tungsten contacts
--	---

NOTES

1. See selection guide for standard conduit entries
2. See switches & sensors data sheet for further information
3. Please consult your sales office for any other requirements

SOLENOID VALVES

The Falcon range of solenoid valves allows you to choose the material, voltage, number of ports, number of coils and C_v to best suit your application. See the Falcon II data sheet for more information.



QUANTUM™ FLAMEPROOF LINEAR CONTROL MONITOR
 2800 SERIES SELECTION GUIDE

Housing													
28	2800 linear screw lid												
Cover style													
	6	No Beacon											
Switch type													
		9	SPDT hermetically sealed proximity switch										
Material													
			A	Aluminum									
			S	Stainless steel									
Beacon type and color													
				00	No Beacon								
Drive shaft type													
					0	No shaft (Linear unit)							
Solenoid body material													
						A	Anodized aluminum						
						E	Stainless steel						
Solenoid coil voltage													
							C	24 V DC					
							D	24 V AC					
							H	90-120 V AC					
							J	220-240 V AC					
Solenoid valve specification													
								{1/4" BSP entry; 1.1 C _v }			{1/4" NPT entry; 1.1 C _v }		
							K	3/2 way - fail closed			U	3/2 way - fail closed	
							L	3/2 way - fail open			V	3/2 way - fail open	
							Q	5/2 way - fail closed			1	5/2 way - fail closed	
Switch quantity													
								1	One switch (consult sales office)				
								2	Two switches				
Conduit entries supplied													
									2	Two entries – all enclosures			
									3	Three entries – (consult sales office)			
Unit specification													
										AAA	Standard build- M20 conduit entries		
										ADZ	3/4" NPT conduit entries		
										BEI	Rhodium plated switches		
										DAV	M25 conduit entries		
										FAN	1/2" NPT conduit entries		
										***	Non-standard material – (consult sales office)		
Certification													
											A	ATEX	
											I	IECEX	
											*	Other options (consult sales office)	
Revision													
												R*	Internal revision #
28	6	9	A	00	0	A	C	K	2	2	AAA	A	R1 = Model number 2869A000ACK22AAA-AR1

NOTES

1. Please contact your sales office for guidance on selecting the best possible combination for your control and monitoring requirements.
2. See Hazardous area classification technical bulletin for further information on global standards.



www.westlockcontrols.com

Westlock. We reserve the right to change designs and specifications without notice.