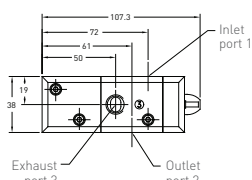
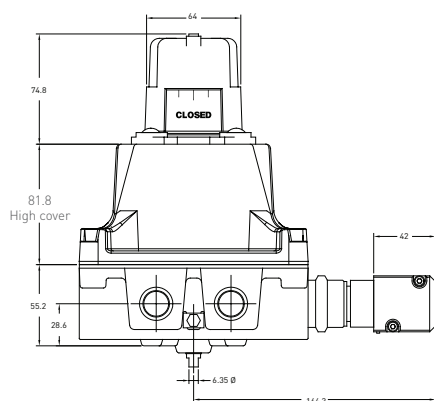
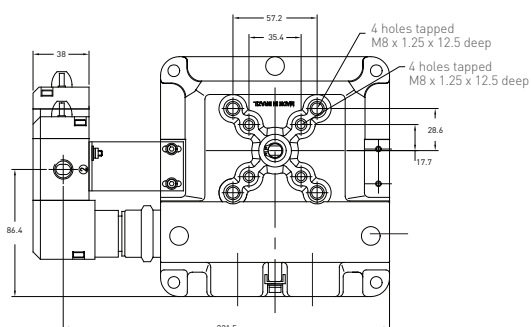
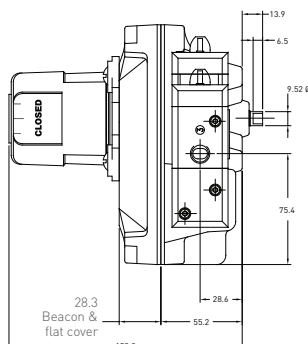
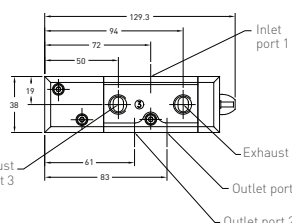


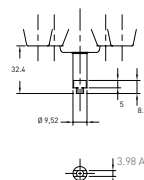
FLAMEPROOF – ATEX/IEC



Falcon II 3/2 way



Falcon II 5/2 way



NAMUR shaft details

TECHNICAL SPECIFICATIONS

Enclosure	Aluminum with powder coat finish
	Stainless steel with electropolished finish
Temp. range	-30°C to +85°C (Flat cover -20°C to +85°C)
Shaft and hardware	Stainless steel
Bushing	PTFE (stainless steel enclosure)
	Oil impregnated bronze (aluminum enclosure)
Beacon visual indicator	Co-polyester
Drive shaft	
Westlock standard	Double-D with 1/4" A/F
NAMUR standard	NAMUR standard VDI/VDE 3845
Available switches	
	V3 SPDT mechanical switches
	DPDT mechanical switches
	V3 slotted and barrel inductive proximity sensors
	Magnum SPDT (hermetically sealed proximity type) switches
	G0 hermetically sealed switches, SPDT

The Falcon range of solenoid valves allows you to choose the material, voltage, number of ports, number of coils and C_v to best suit your application. See the Falcon II data sheet for more information.

1. See selection guide for standard conduit entries
2. See switches & sensors data sheet for further information
3. Please consult your sales office for any other requirements



QUANTUM™ FLAMEPROOF ROTARY CONTROL MONITORS

2200/2600 SERIES SELECTION GUIDE

Housing													
22	2200 with flanged lid												
26	2600 with screw lid												
Cover style													
4	With Beacon visual indication												
6	No visual indication												
Switch type													
3	GO switch SPDT (2200 series only)						7	Inductive sensor					
5	Microswitch SPDT contacts						9	Magnum proximity switch					
6	Microswitch DPDT contacts						0	No switches fitted					
Material													
A	Aluminum												
S	Stainless steel												
Beacon type and color													
BY	Black/Yellow						B1	BM3-1 pattern 90°					
RU	Black/yellow (Russian) (2600 only)						B3	BM3-3 pattern 90°					
AR	ANSI Red/White						B5	BM3-5 pattern 90°					
GR	Green/Red						B7	BM3-7 pattern 180°					
00	No Beacon fitted						B9	BM3-9 pattern 180°					
Drive shaft type													
S	Westlock standard – ¼" A/F (6.32 mm)												
N	NAMUR standard shaft – VDI/VDE 3845												
*	Non-standard material and build (consult sales office)												
Solenoid body material													
A	Anodized aluminum												
E	Stainless steel												
Solenoid coil voltage													
C	24 V DC						H	90-120 V AC					
G	90-120 V DC						J	220-240 V AC					
Solenoid valve specification													
[¼" BSP entry; 1.1 C _v]							[½" NPT entry; 1.1 C _v]						
K	3/2 way - fail closed						U	3/2 way - fail closed					
L	3/2 way - fail open						V	3/2 way - fail open					
Q	5/2 way - fail closed						1	5/2 way - fail closed					
Switch/sensor quantity													
0	No switch/sensor fitted												
1	One switch/sensor												
2	Two switches/sensors												
3	Three switches/sensors (consult sales office for 2200 series)												
4	Four switches/sensors (consult sales office for 2200 series)												
Conduit entries supplied													
2	Two entries – all enclosures												
3	Three entries – (consult sales office)												
Unit specification													
AAA	Standard build- M20 conduit entries												
ABM	Gold plated switches												
ADZ	¾" NPT conduit entries												
BEI	Rhodium plated switches												
DAV	M25 conduit entries												
FAN	½" NPT conduit entries												
***	Non-standard material (consult sales office)												
Certification													
A	ATEX & IECEx												
*	Other options (consult sales office)												
Revision													
R*	Internal revision #												
R2	= Model number 2649ABYNACK22AAA-AR2												
26	4	9	A	BY	N	A	C	K	2	2	AAA	A	



NOTES

1. Please contact your sales office for guidance on selecting the best possible combination for your control and monitoring requirements.
2. See Hazardous area classification technical bulletin for further information on global standards.

WESTLOCK CONTROLS
280 N. Midland Avenue, Ste 258
Saddle Brook, NJ 07663
United States

Crane Co., and its subsidiaries cannot accept responsibility for possible errors in catalogues, brochures, other printed materials, and website information. Crane Co. reserves the right to alter its products without notice, including products already on order provided that such alteration can be made without changes being necessary in specifications already agreed. All trademarks in this material are the property of the Crane Co. or its subsidiaries. The Crane and Crane brands logotype (WESTLOCK CONTROLS®) are registered trademarks of Crane Co. All rights reserved.