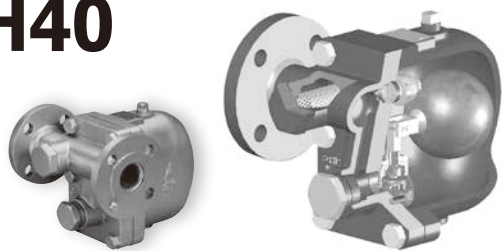
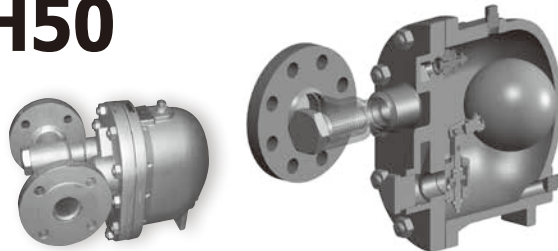


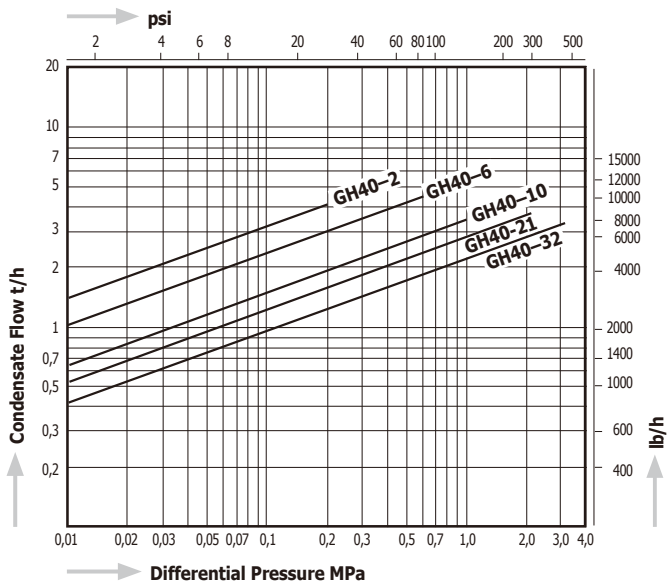
# GH40



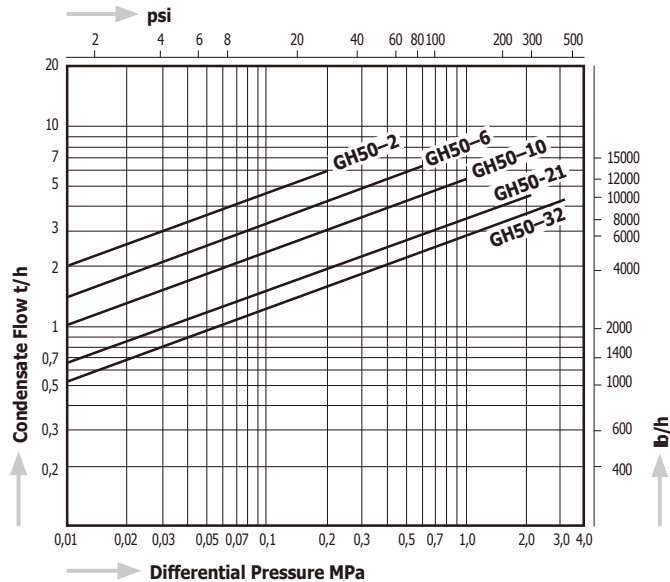
# GH50



Capacity Chart **GH40**

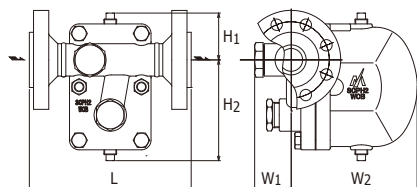


Capacity Chart **GH50**

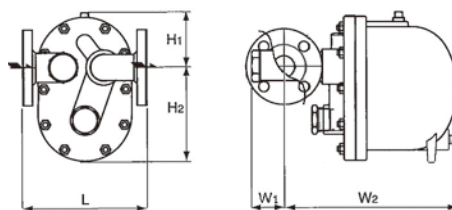


Dimensions

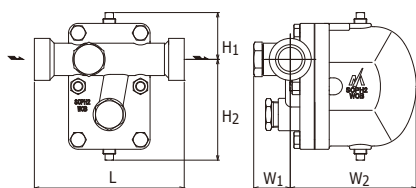
**GH40-F**



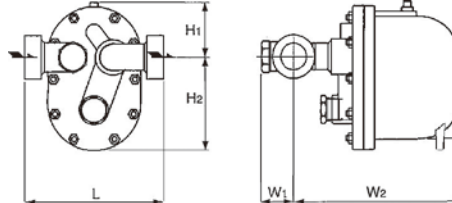
**GH50-F**



**GH40-W**



**GH50-W**



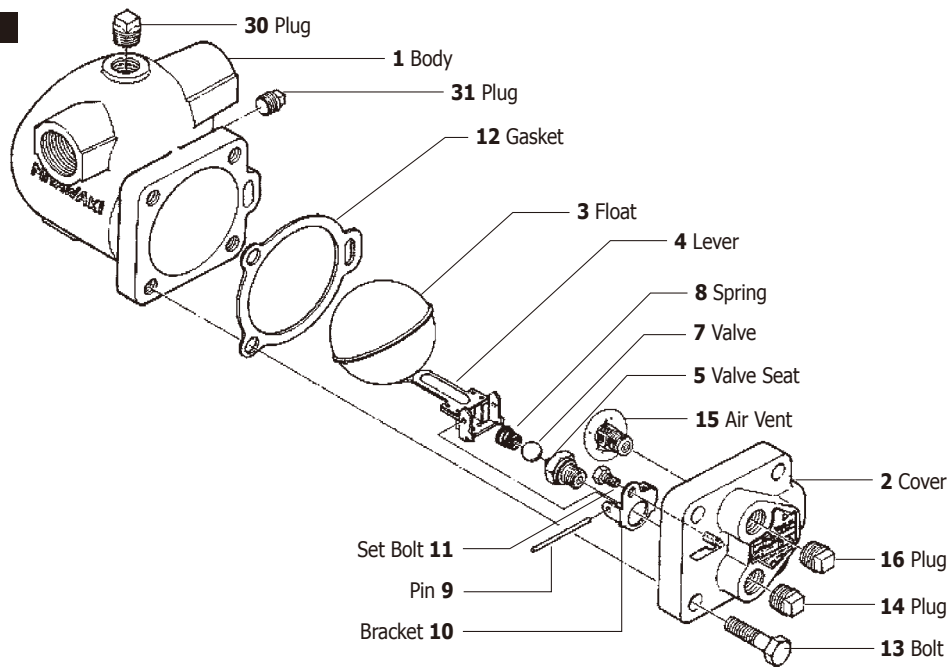
Model	Connections	Size	Max. Operating Pressure		Max. Operating Temperature, TMO		Dimensions (mm)					Dimensions (in)					Body Material	Weight	
			MPa	psig	°C	°F	L	H1	H2	W1	W2	L	H1	H2	W1	W2		kg	lb
<b>GH40 - F</b>	Flanged JIS, ASME, DIN	1½", 2"	3,2	464	400	752	230	80	170	60	210	9.1	3.15	6.7	2.4	8.3	Cast Steel SCPH2	24	53
<b>GH40 - W</b>	Socket Weld JIS, ASME, DIN	1½"					250	80	170	60	210	9.8	3.15	6.7	2.4	8.3		19	41.9
		2"					260	10.2	32	70.4									
<b>GH50 - F</b>	Flanged JIS, ASME, DIN	1½", 2"									230	107	173	60	330	9.1		4.2	6.8
<b>GH50 - W</b>	Socket Weld JIS, ASME, DIN	1½"					250	107	173	60	330	9.8	4.2	6.8	2.4	13.0	32	70.4	
		2"	260	10.2															

Available pressure ranges	Max. Operating Pressure (PMO)											
	MPa		psig		MPa		psig		MPa		psig	
	0,2	29	0,6	87	1,0	145	2,1	305	3,2	464		
Models	GH40-2F, GH40-2W GH50-2F, GH50-2W		GH40-6F, GH40-6W GH50-6F, GH50-6W		GH40-10F, GH40-10W GH50-10F, GH50-10W		GH40-21F, GH40-21W GH50-21F, GH50-21W		GH40-32F, GH40-32W GH50-32F, GH50-32W			

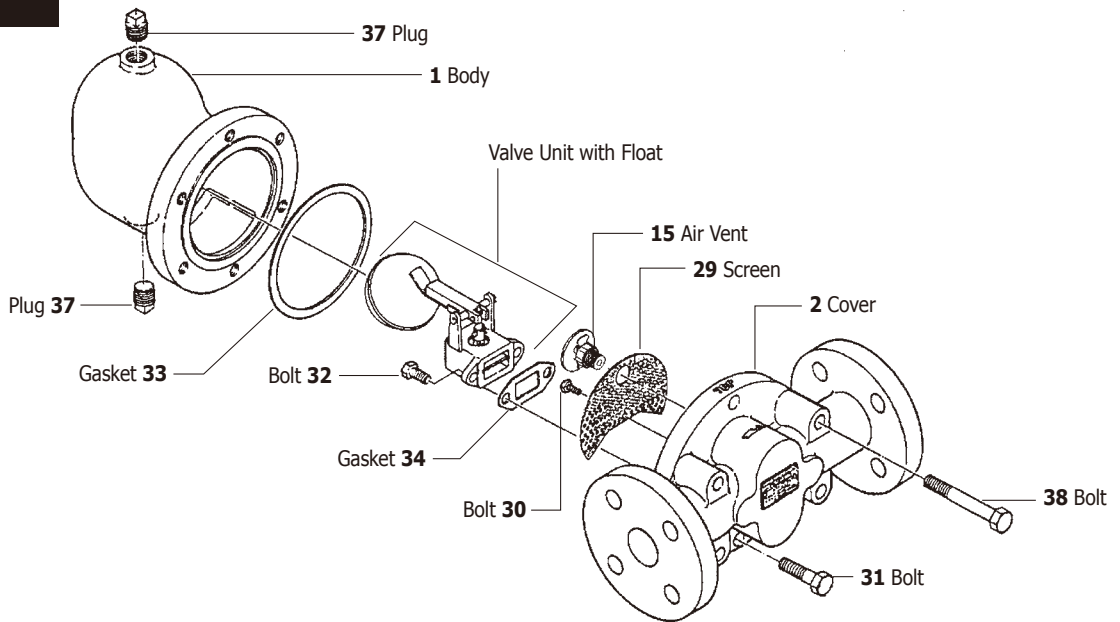
Depending on the flange standard the dimensions and the weight may differ.

Stainless Steel as body material is available as special design. For more details, please contact MIYAWAKI Inc. or an authorized representative.

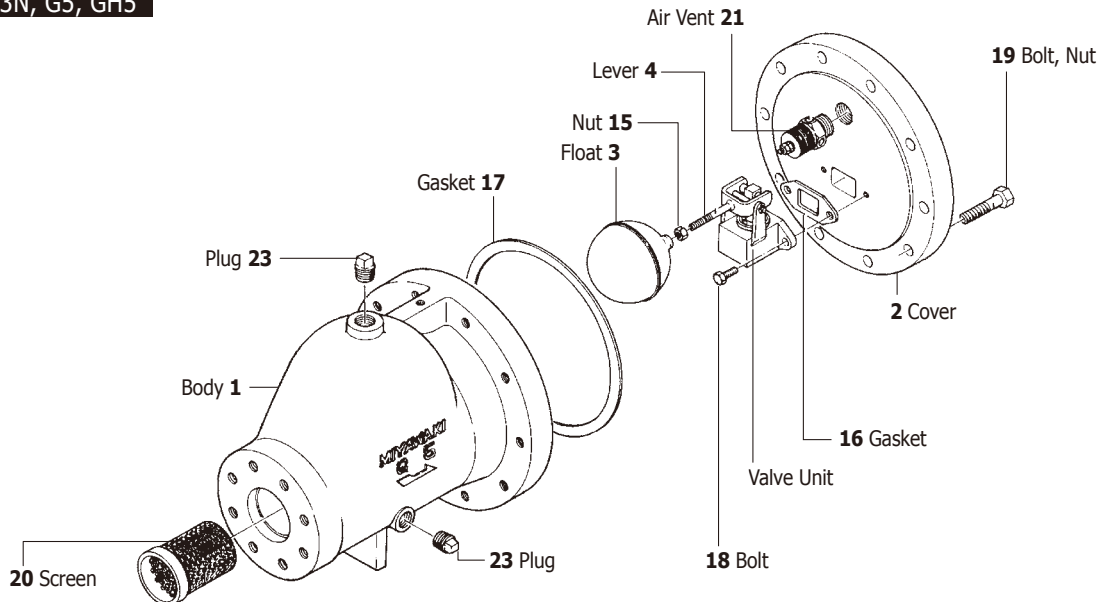
**G11N/G12N**



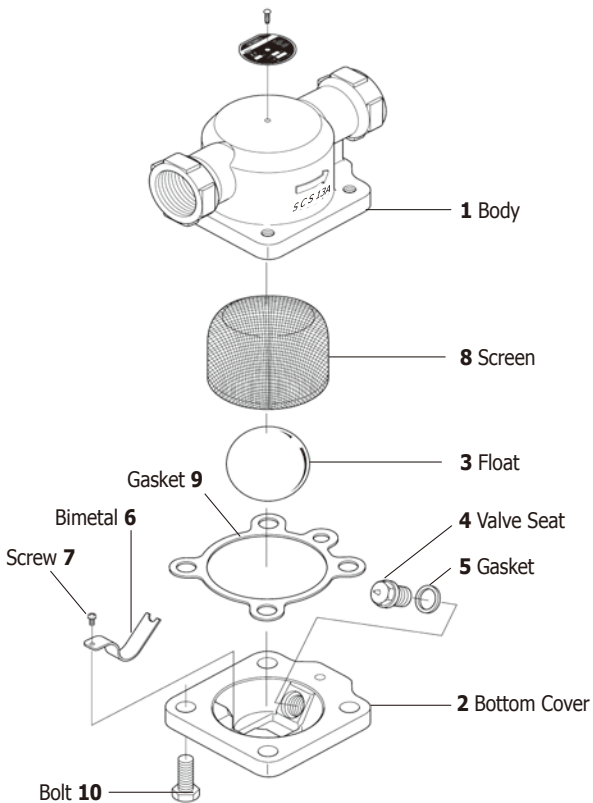
**G15N**



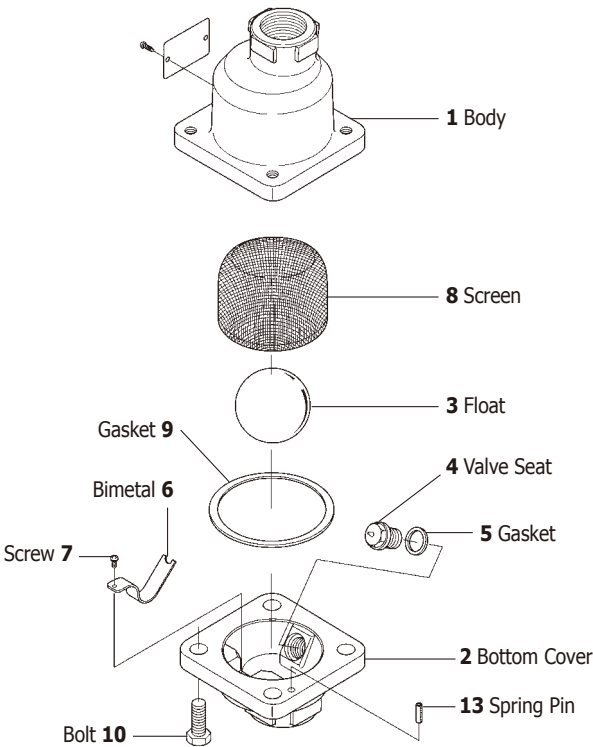
**G3N, GH3N, G5, GH5**



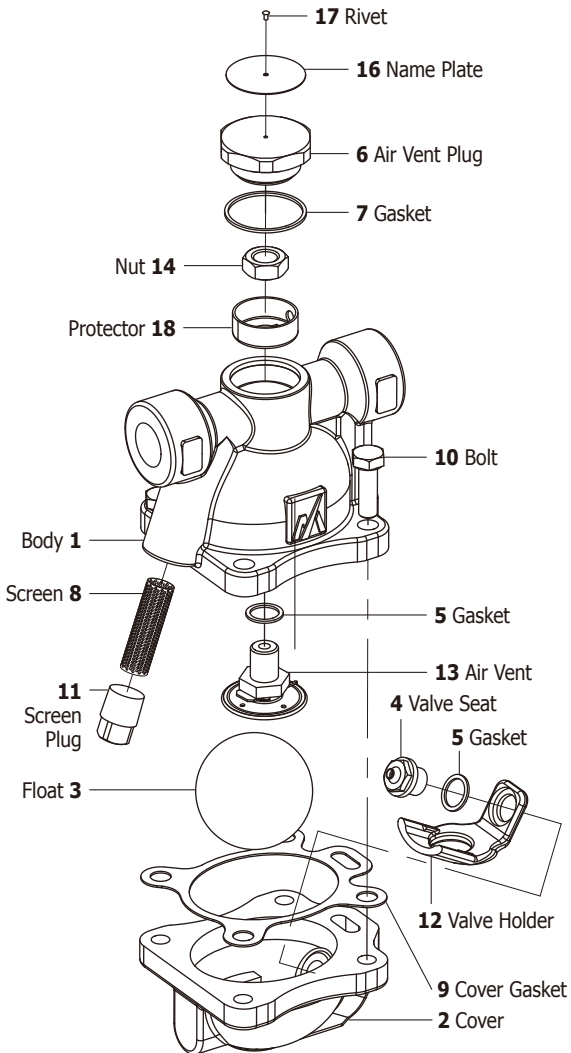
GC1



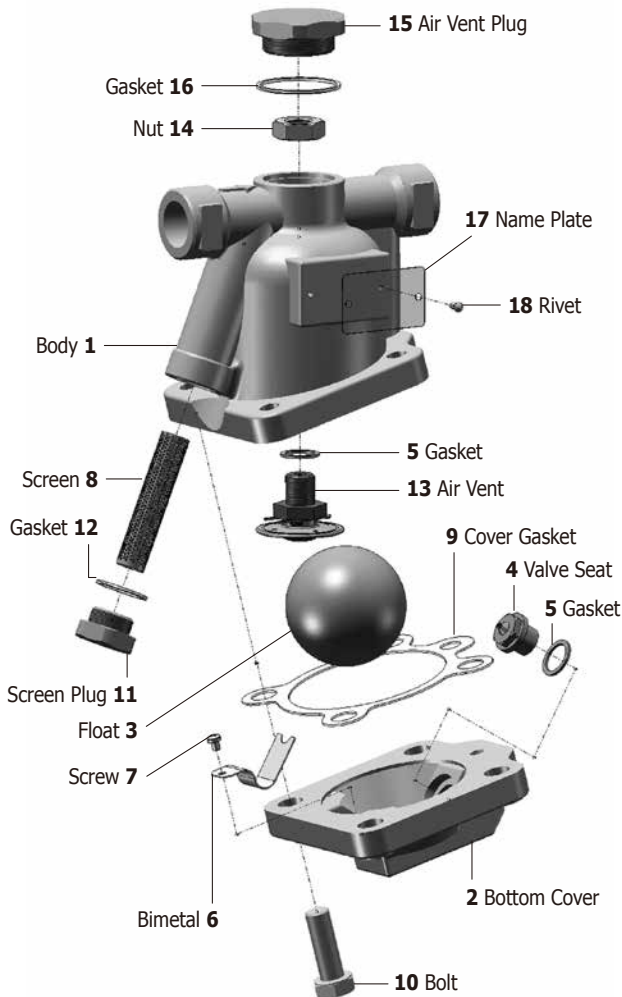
GC1V



G20N



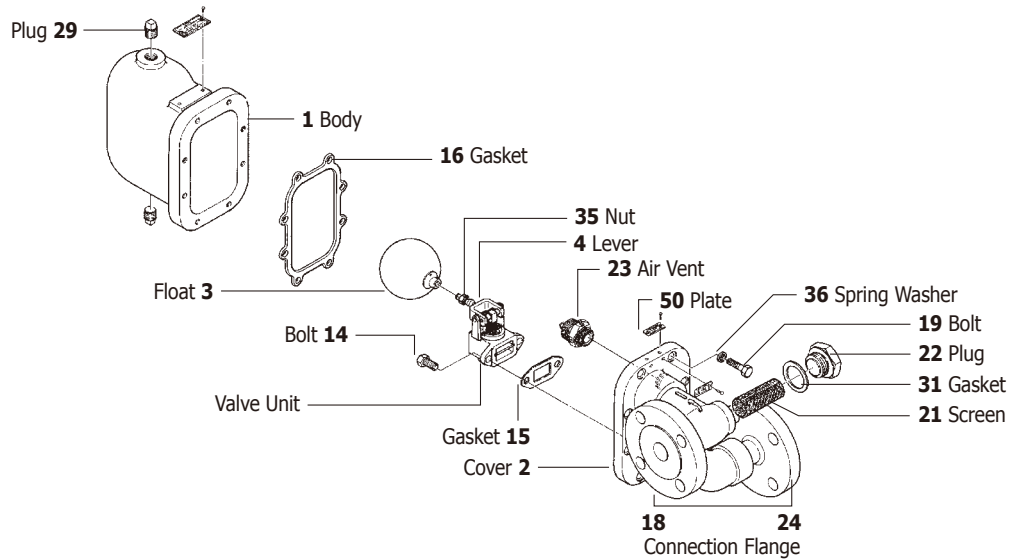
GC20



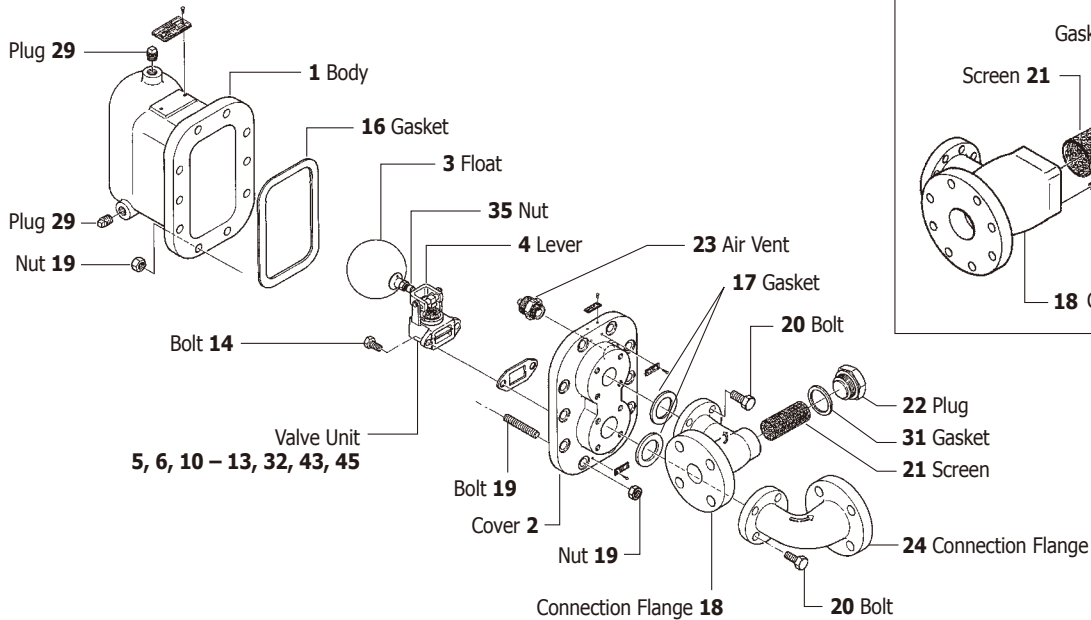
**GH2**

**Valve Unit**

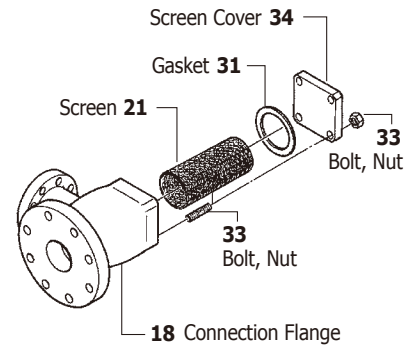
- 5 Valve Seat
- 6 Valve
- 7 Holder
- 8 Lever Nut
- 9 Nut
- 10 Connector
- 11 Nut
- 12 Guide Wing
- 13 Pin
- 32 Baffle Plate
- 39 Pin
- 43 Shaft
- 44 Collar
- 45 Split Pin
- 47 Spring Pin



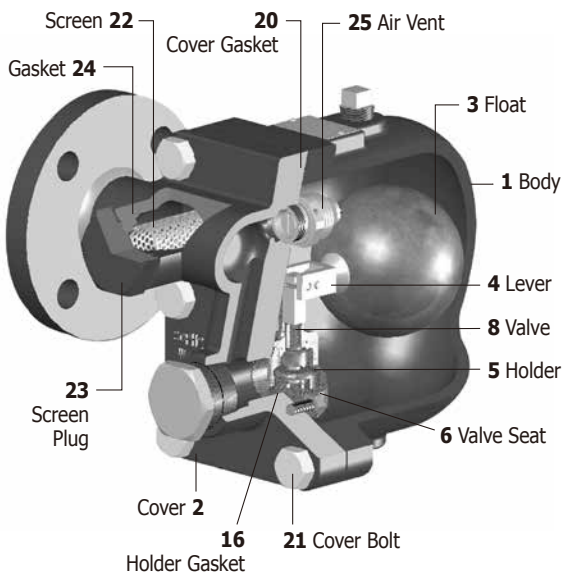
**GH4, GH6, GH8**



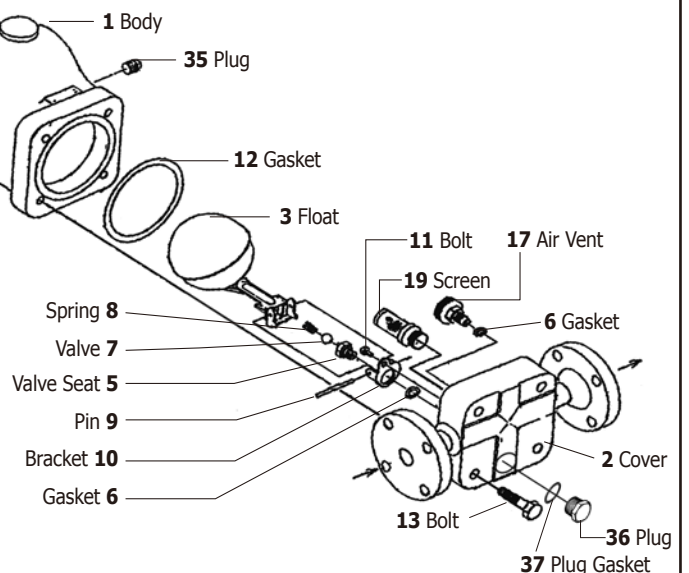
**GH8 only**



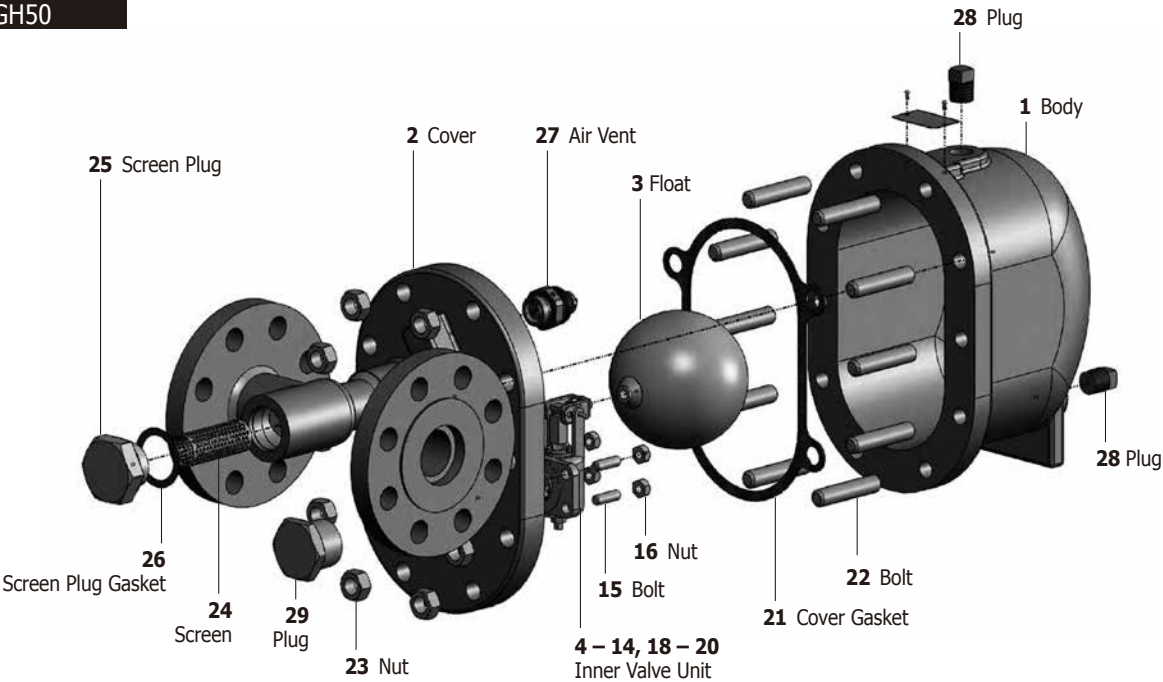
**GH40**



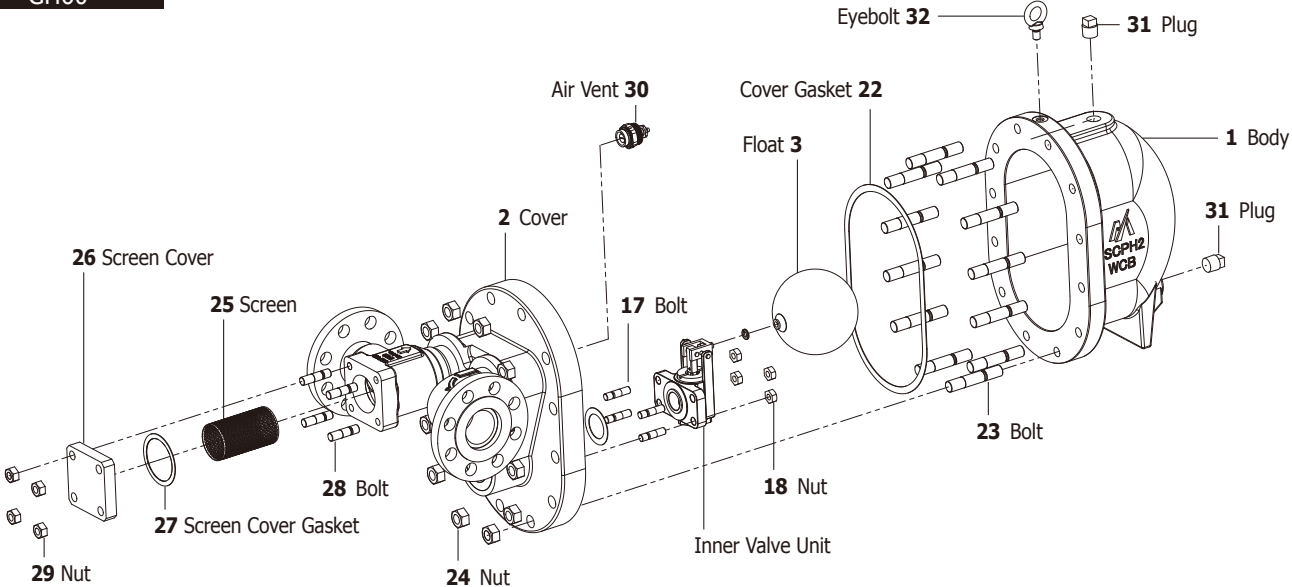
**GTH12**



**GH50**



**GH60**



**GH70**

