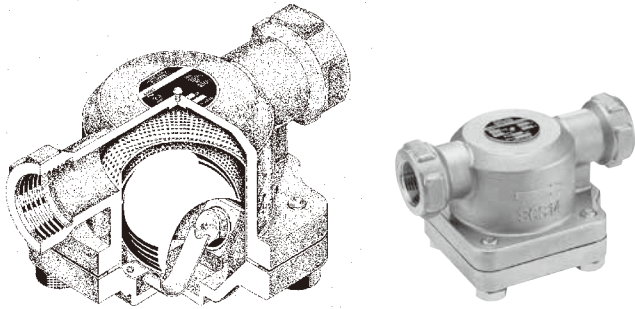
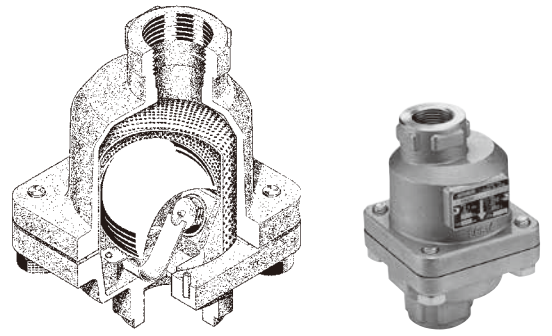


GC1



Horizontal installation

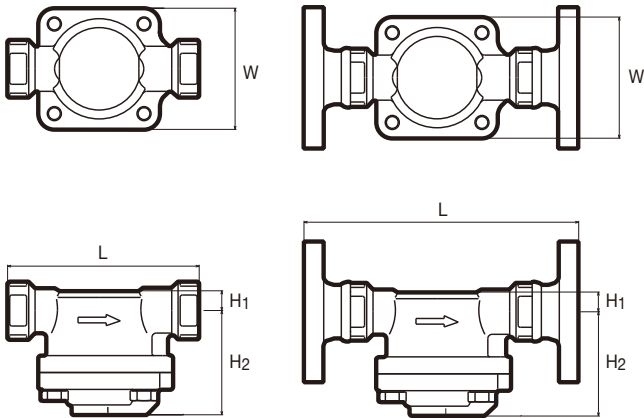
GC1V



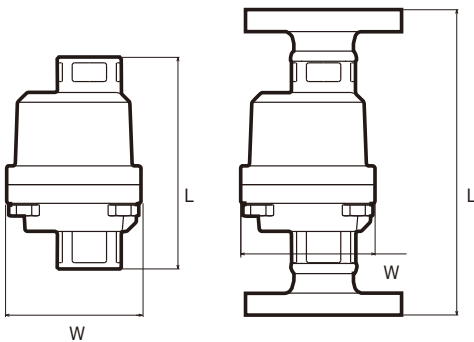
Vertical installation

Dimensions

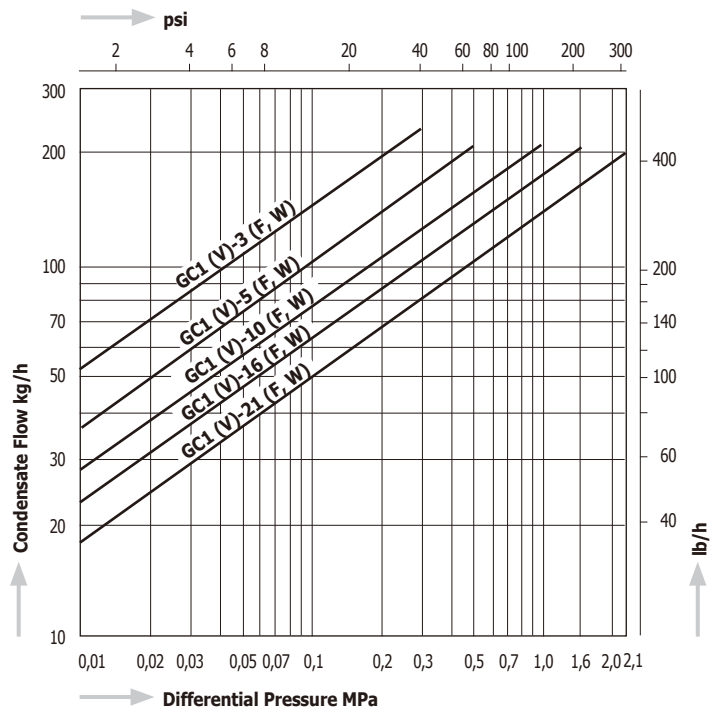
GC1



GC1V



Capacity Chart GC1 / GC1V

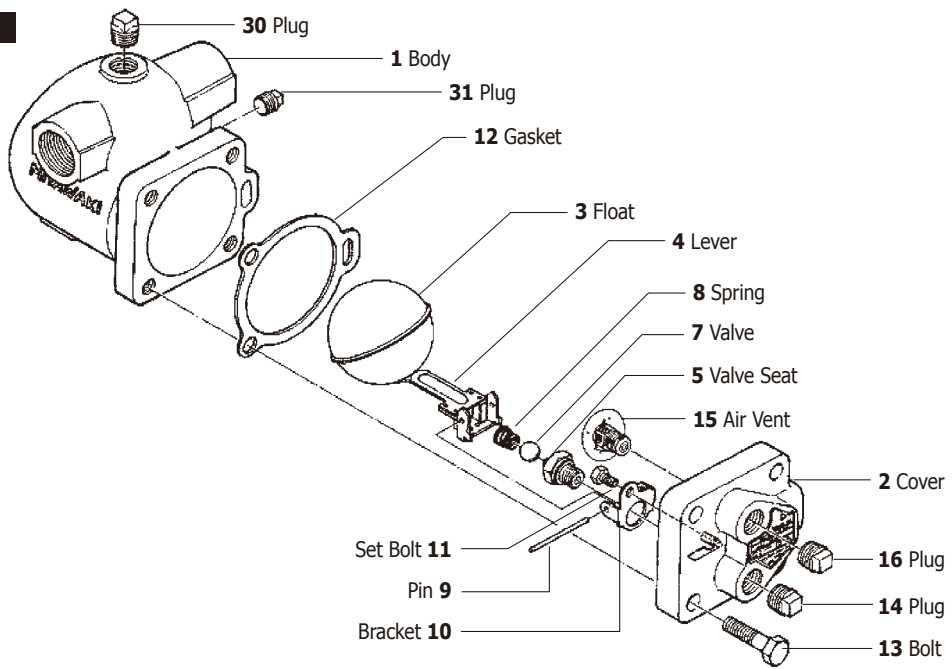


Available pressure ranges GC1/GC1V

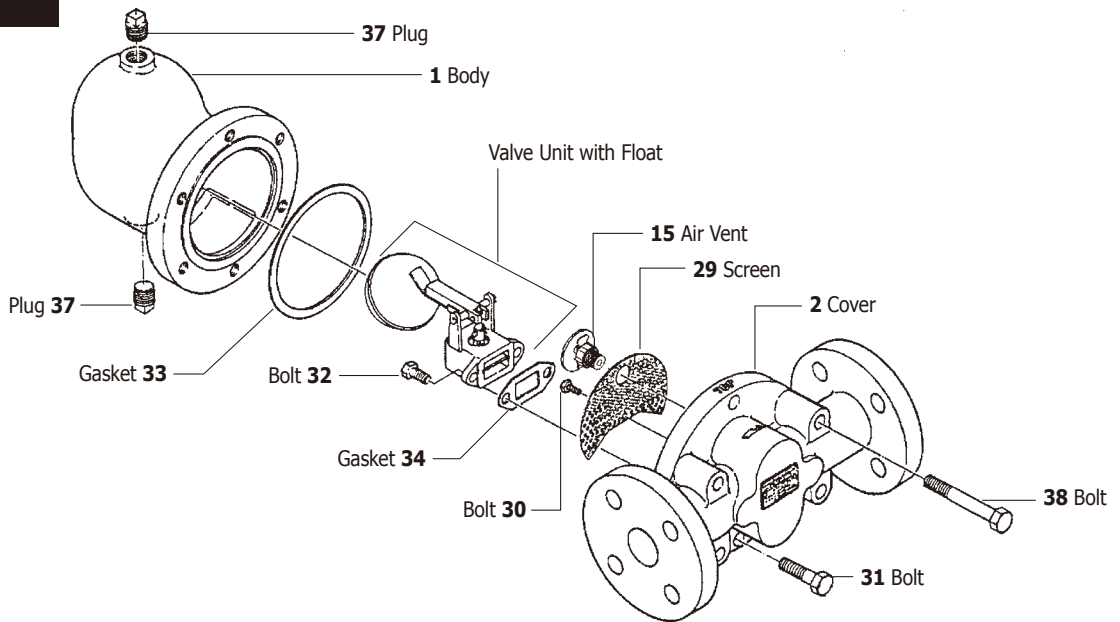
Model	Max. Operating Pressure	
	MPa	psig
GC1 / GC1V - 21	2,1	305
GC1 / GC1V - 16	1,6	230
GC1 / GC1V - 10	1,0	145
GC1 / GC1V - 5	0,5	72.5
GC1 / GC1V - 3	0,3	43.5

Model	Connections	Size	Max. Operating Pressure		Max. Operating Temperature		Dimensions (mm)				Dimensions (in)				Body Material	Weight	
			MPa	psig	°C	°F	L	H1	H2	W	L	H1	H2	W		kg	lb
GC1 (GC1V)	Screwed Rc, NPT	1/2"	2,1	305	350	662	127	15	75	86	5.0	0.6	3.0	3.4	Stainless Steel SCS13A	1,8	4.0
		3/4"					136				5.4					1,9	4.2
		1"					140				5.5					2,0	4.4
GC1-W (GC1V-W)	Socket Weld JIS, ASME, DIN	1/2"	2,1	305	350	662	127	15	75	86	5.0	0.6	3.0	3.4		1,8	4.0
		3/4"					136				5.4					1,9	4.2
		1"					140				5.5					2,0	4.4
GC1-F (GC1V-F)	Flanged JIS, ASME, DIN	1/2"	2,1	305	350	662	175	15	75	86	6.9	0.6	3.0	3.4	3,3	7.3	
		3/4"					195				7.7				4,5	9.9	
		1"					215				8.5				5,3	11.7	

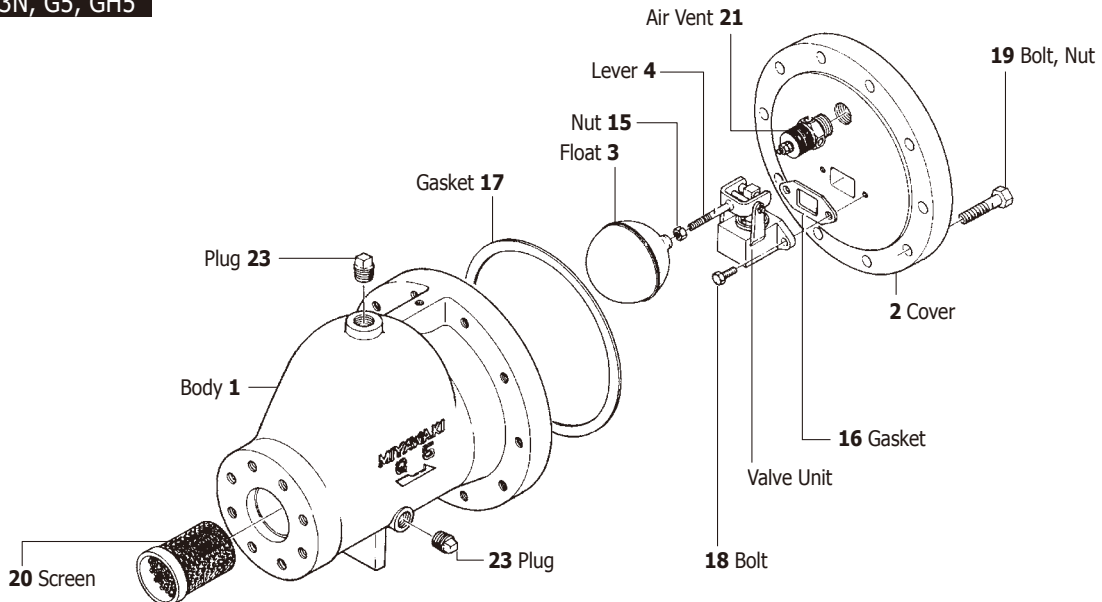
G11N/G12N



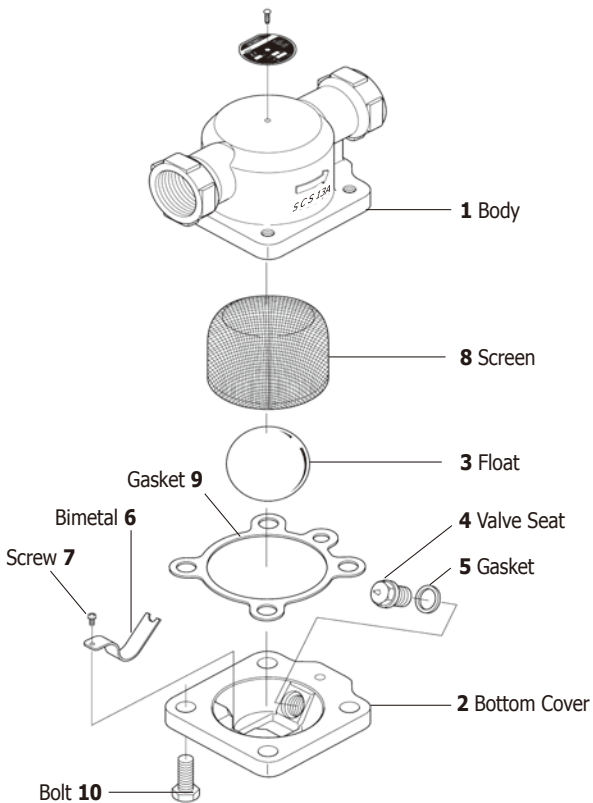
G15N



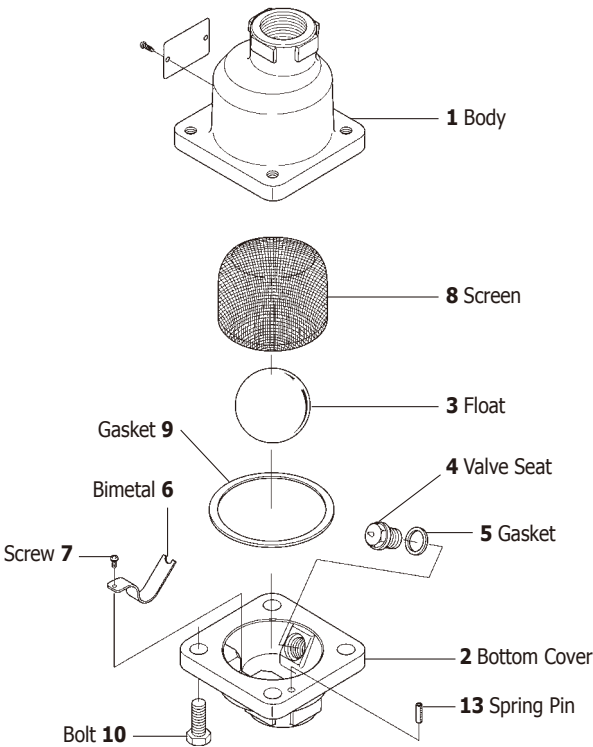
G3N, GH3N, G5, GH5



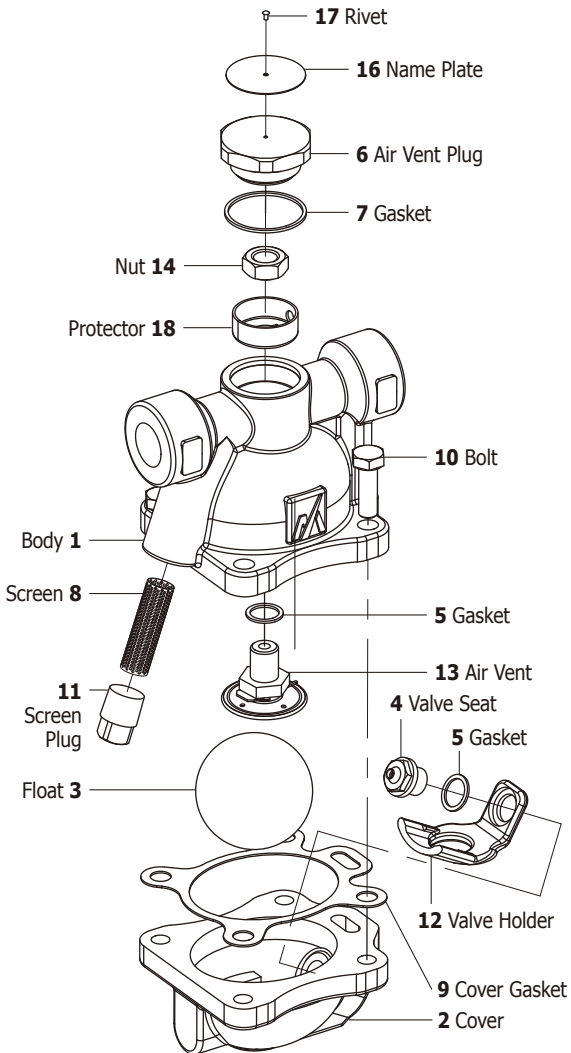
GC1



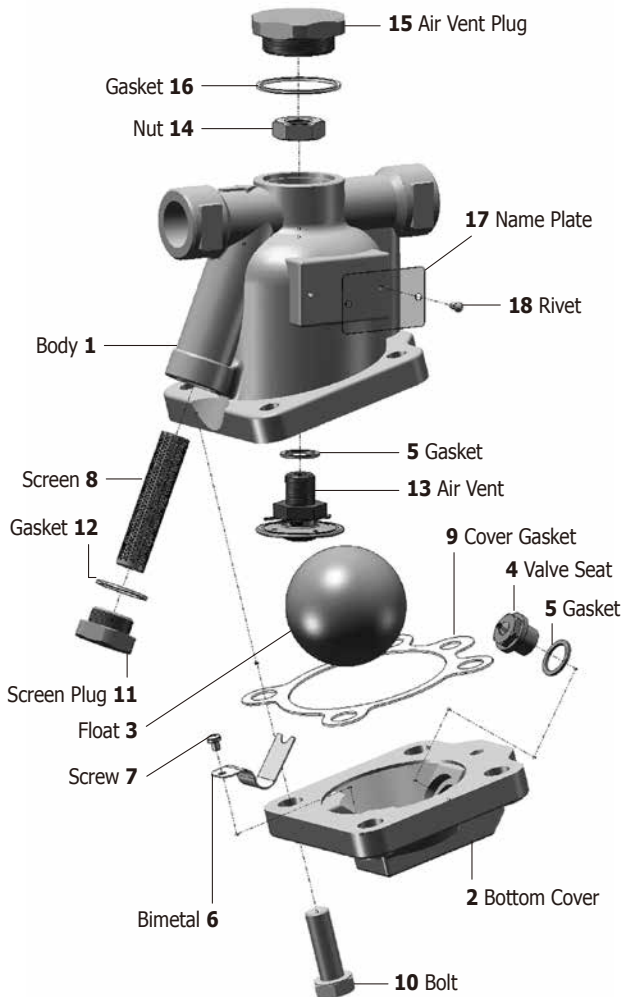
GC1V



G20N



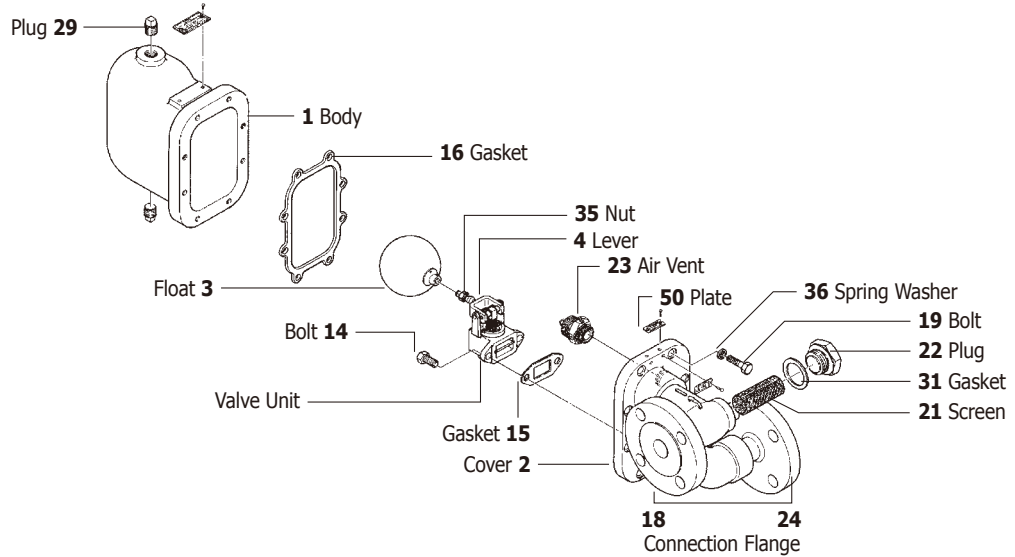
GC20



GH2

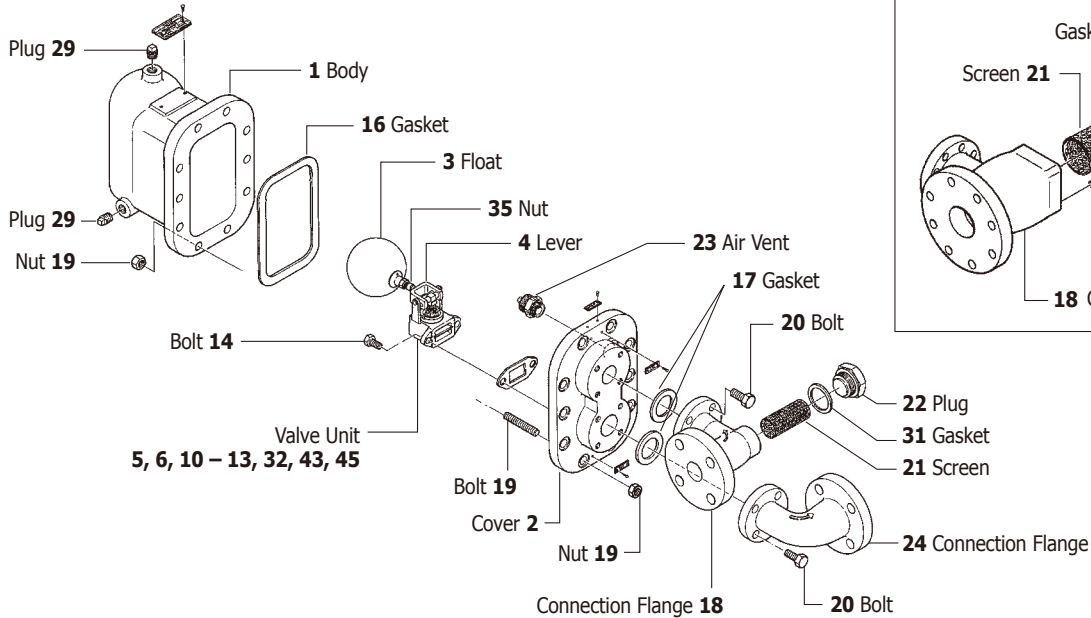
Valve Unit

- 5 Valve Seat
- 6 Valve
- 7 Holder
- 8 Lever Nut
- 9 Nut
- 10 Connector
- 11 Nut
- 12 Guide Wing
- 13 Pin
- 32 Baffle Plate
- 39 Pin
- 43 Shaft
- 44 Collar
- 45 Split Pin
- 47 Spring Pin

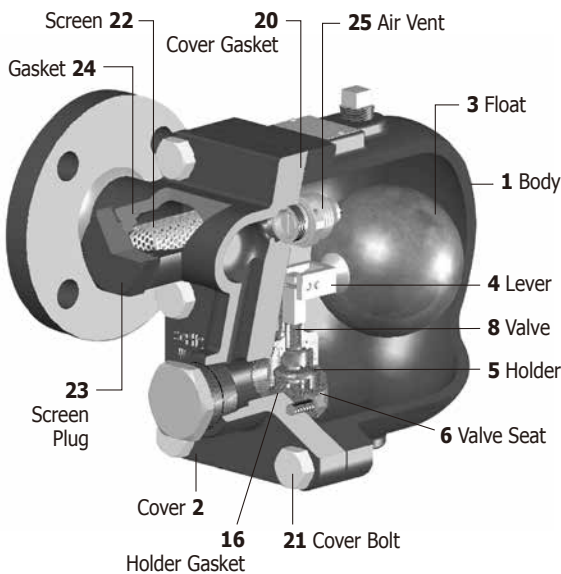


GH4, GH6, GH8

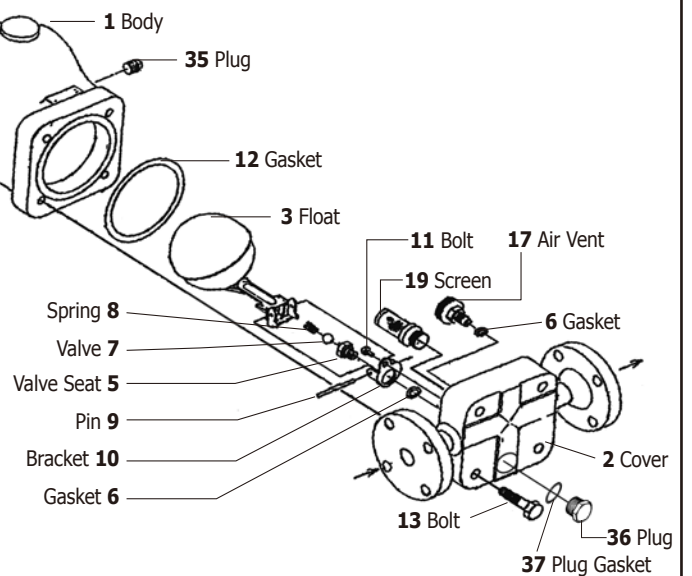
GH8 only



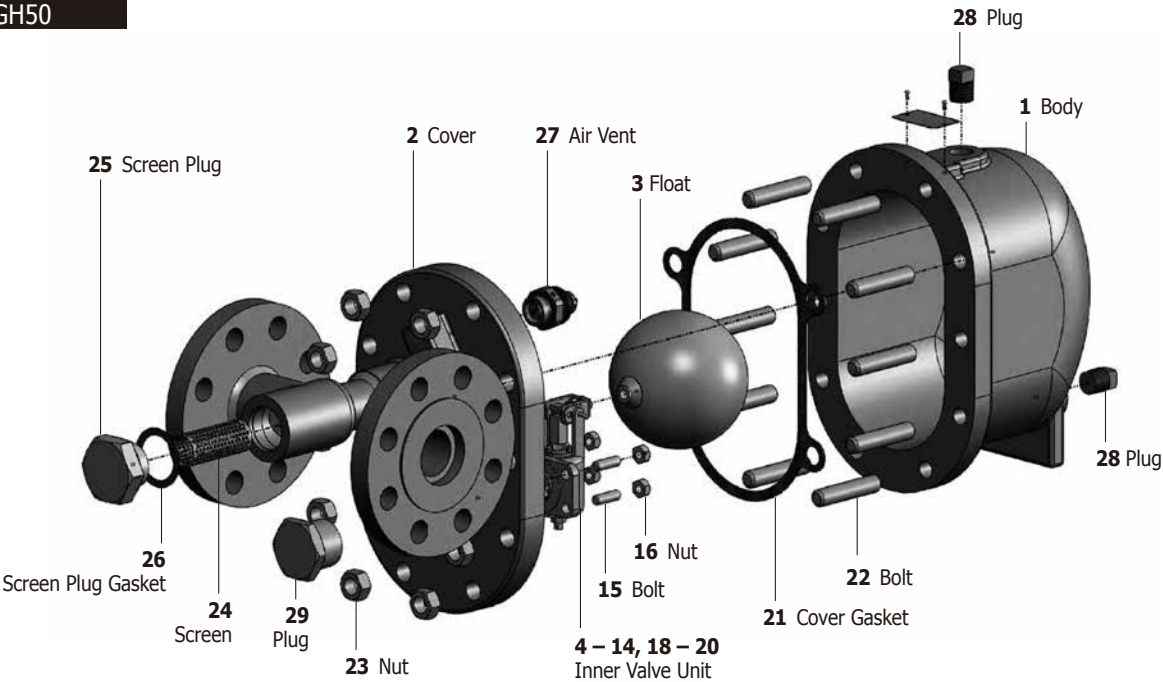
GH40



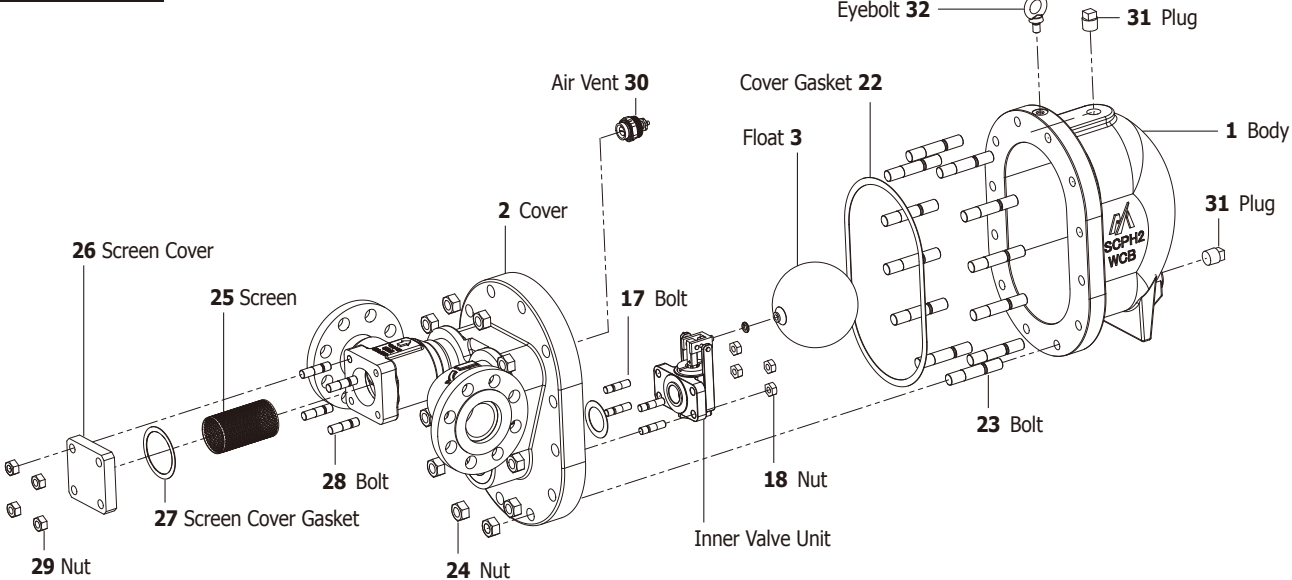
GTH12



GH50



GH60



GH70

