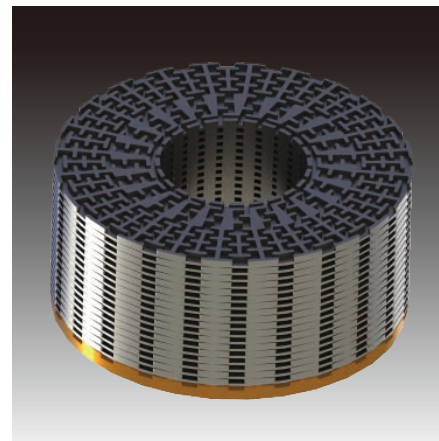


**CML Series Labyrinth Control Valve Product Range**

Size	1-1/2"~20"
Rating	ANSI Class 900~2500
Body Material	CS, SS, Alloy, Duplex SS etc.
Trim material	SS, Alloy Steel and Duplex SS etc.
Face-to-face Dimensions	ISA S75.16 (ANSI Class 900~2500)
Bonnet Type	Standard, Extension, Low temperature
Connection Type	FF, RF, RTJ, LF BW etc.
Flow Characteristics	Linear
Rangeability	50:1
Operating temperature	-196°C~538°C
Operation	Pneumatic, Electric etc.
Design Standard	IEC60534
Valve construction	Globe body. Labyrinth pressure reducing
Leakage Class	FCI 70-2 Class IV, V

For more details, see NEWAY catalog No.E-CSL

**Application:**

Petroleum, Chemical, Metallurgy  
Shipbuilding, Electric power, Building materials  
LNG, light industry etc.  
Applicable for high differential pressure and  
clean medium with relaxed leaking  
requirements

**Optional Actuator:**

Pneumatic Actuator: Series NWS etc.  
Electric Actuator: AUMA, ROTORK etc.