

## 2-1. Self-Drain Valves: Type-F

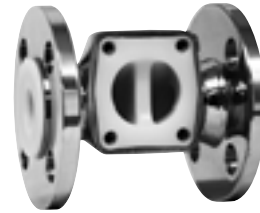
### 1 Features of Products

#### What is the Self-Drain Valve?

- A valve main body with enhanced fluid accumulation prevention effect of Bio Clean Diaphragm Valve series.
- This valve has a structure that eliminates the fluid accumulation by horizontally positioning the valve axis when implementing in a horizontal pipeline.

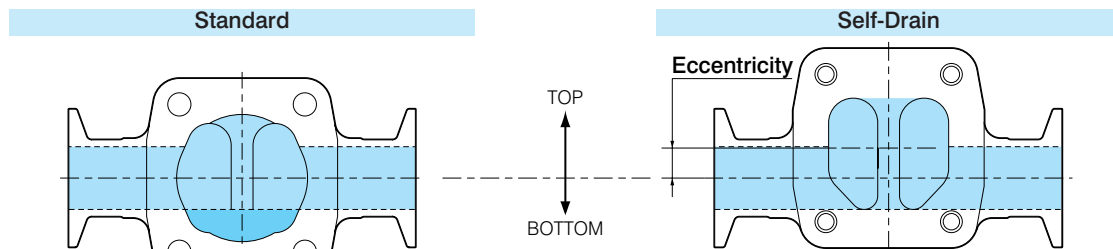


Stainless Steel Main Body: B414 (F)



PFA Lined Main Body: B459 (F)

#### Comparison with Standard Valve Main Body (with valve axis horizontally positioned)



The valve seat is on the same centerline with straight pipe.

Seat center and straight pipe center are eccentrically positioned and the bottom end of valve seat is in line with inner wall of straight pipe.

#### Example of Applications

For various biotechnology systems, ultra-pure water production system for semiconductor industries and other systems requiring zero liquid accumulation in fluid path

### 2 Valve Specifications

#### Stainless Steel

##### Manufactured Main Bodies

Name	Main Material	Material Code	Connection Standard and Manufacturing Range			
			Ferrule	Astro (TIG) Welding*	Union Screw*	Flange*
			Nominal Size	Nominal Size	Nominal Size	Nominal Size
Stainless Steel Forged	SUS316L	14(F)	8-50	8-50	8-50	8-50
Stainless Steel Cast	SCS16	13(F)	65-100	65-100	65-100	65-100

\* Option

#### Lined Main Bodies

##### Manufactured Main Bodies

Name	Base Material	Material Code	Connection Standard and Manufacturing Range	
			Flange	
			Nominal Size	
PFA Lining ★	SCS13	59(F)	15-50	

★: In case of export, export license stipulated in the Foreign Exchange and Foreign Trade Control Law of Japan and/or if necessary, export-related laws and regulations of the United States of America and other countries is required.

#### Other Specifications

- Main body surface finish classifications, diaphragm specifications, etc., are in accordance with the standard specifications. (Ref. page 10-11)
- Interchangeability with the units for standard main bodies allows the common use with the actuators for manually operated valves and pneumatically operated ON-OFF valves.