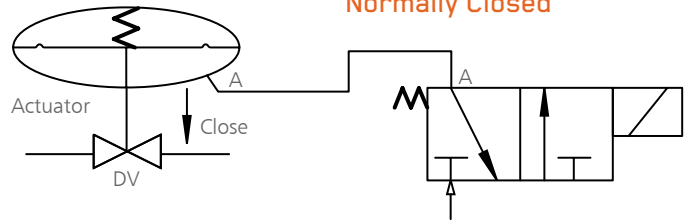
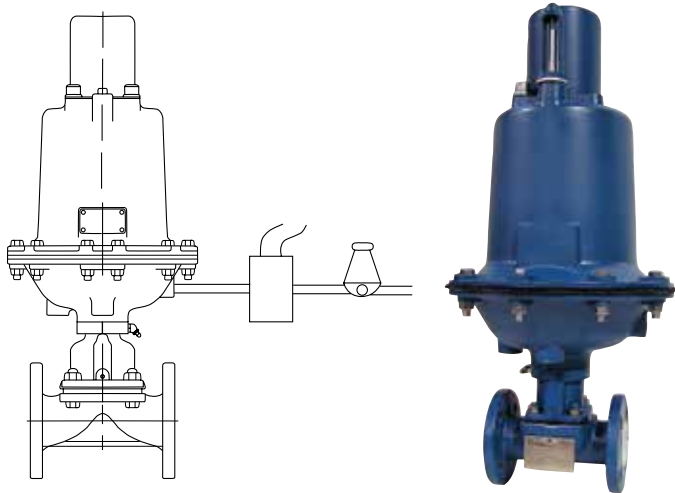


# Actuator Series

## 3200 Series

### Fail Close (Spring-to-Close, Air-to-Open)

This is the reverse of the 3100 Series. The valve is spring-to-close and air-to-open. Operation is via a normally closed 3 way, 2 position (3/2) solenoid valve. When the solenoid is energized, the valve opens and when de-energized, the valve closes. The valve will fail closed in the event of loss of electrical power to the solenoid valve.



Piping Schematic  
for 3/2 Solenoid Valve  
Normally Closed

Air pressure on the underside of the actuator diaphragm opens the valve. A spring or set of springs closes the valve. This Dia-Flo® air-to-open / spring-to-close actuator is available in sizes #12, #25, #50, #75, #101, #130 and #250.

