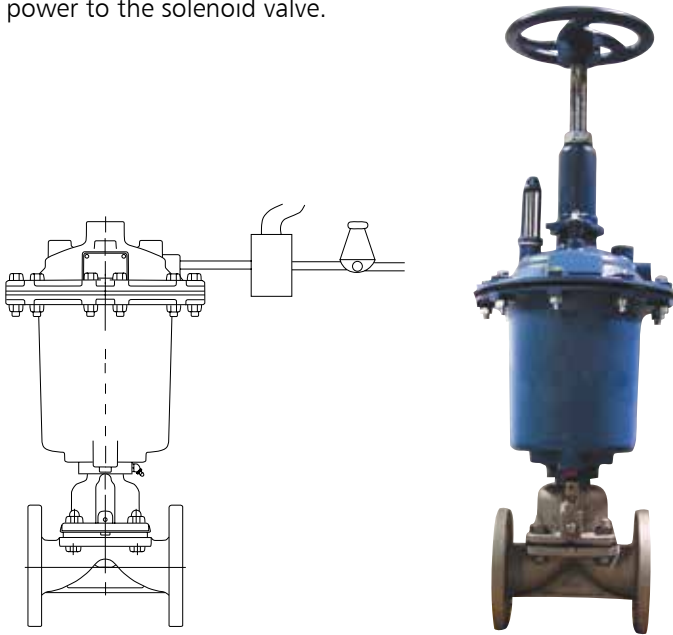


Actuator Series

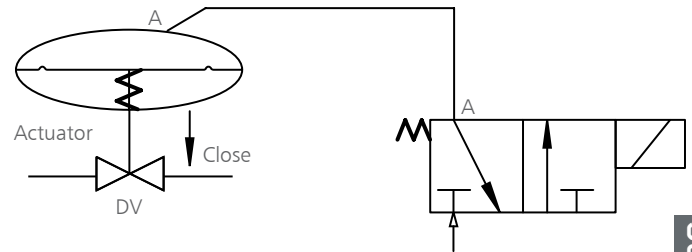
3100 Series

Fail Open (Spring-to-Open, Air-to-Close)

The actuator is spring-to-open, air-to-close type. Operation is via a normally closed 3 way, 2 position (3/2) solenoid valve. When the solenoid is energized, valve closes and when de-energized, the valve opens. The valve will fail open in the event of loss of electrical power to the solenoid valve.



Piping Schematic for 3/2 Solenoid Valve Normally Closed



Air pressure on the top side of the actuator diaphragm closes the valve; a spring opens the valve. Springs are available to open valve against full vacuum in the line. (Be sure to specify when vacuum is involved.) The Dia-Flo® air to close, spring to open actuator is available in sizes #12, #25, #50, #101, #130, #250.

