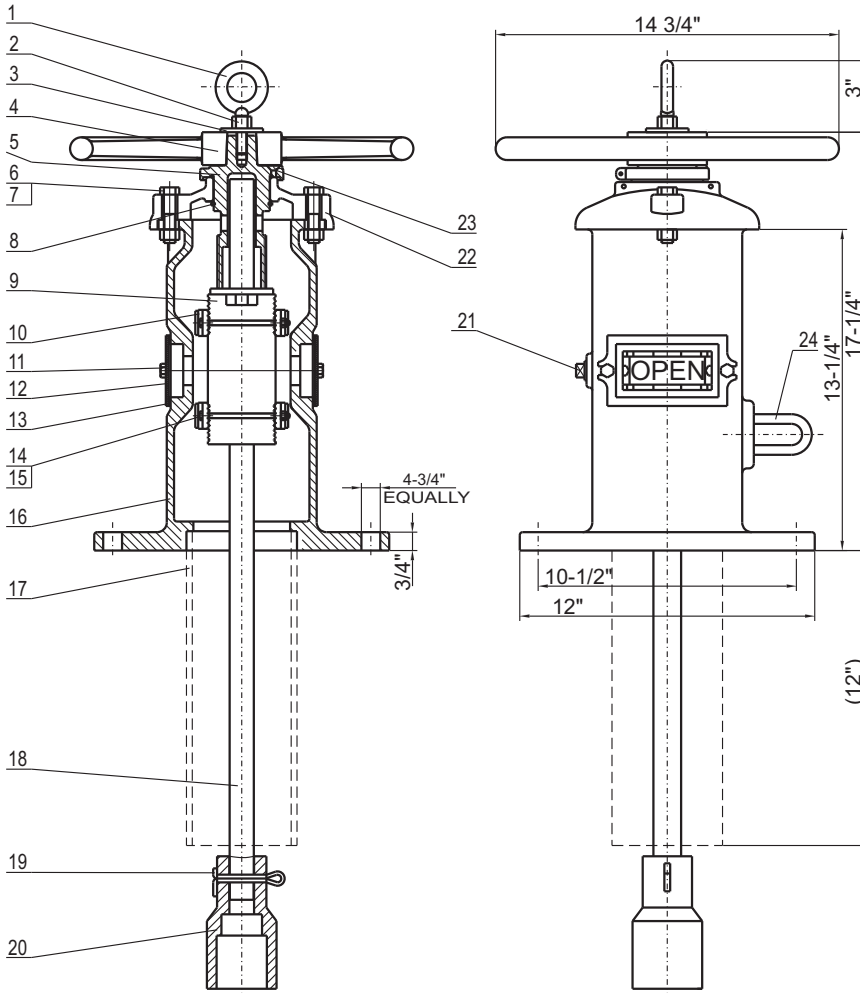
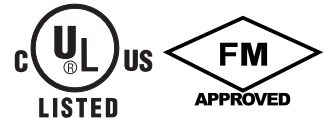


# Gate Valve

Indicator Post - Wall Type

Fig.W388



### Field Adjustment:

1. Remove the top section from the top of the Indicator Post assembly.
2. Set the "OPEN" and "SHUT" targets for the appropriate valves size.
3. Reattach the Top Section to the top of the Indicator Post assembly.
4. Design and materials are subject to change without notice.

### Materials List

DET	QTY.	Description	Material	DET	QTY.	Description	Material
1	1	Lifting Eye Bolt	ASTM A105	13	2	Window Glass Gasket	PTFE
2	1	Hex Nut	ASTM A105	14	4	Hex Cap Screw	ASTM A105
3	1	Washer	ASTM A105	15	4	Hex Nut	ASTM A105
4	1	Hand Wheel	ASTM A536	16	1	Body	ASTM A536
5	1	Operating Nut	ASTM B62	17	1	Stand Pipe	ASTM A53
6	2	Hex Cap Screw	ASTM A105	18	1	Stem	AISI 1045
7	2	Hex Nut	ASTM A105	19	1	Cotter Pin	AISI 304
8	1	Snap Ring	AISI 066	20	1	Crane Coupling	ASTM A536
9	1	Target Carrier Nut	ASTM B62	21	1	Plug	AISI 304
10	4	Target	ASTM B108	22	1	Cover	ASTM A126B
11	4	Hex Cap Screw	ASTM A105	23	1	Cross Recessed Countersunk Head Screw	AISI 304
12	2	Window Glass	LEXAN-UM	24	1	Locking Nose	ASTM A307B