



L&T Valves manufactures a comprehensive range of Ball Valves in sizes up to 8" (DN 200) and in ASME classes from 150 to 2500. The valves are offered in combination of size, pressure class, material of construction, end-connection, etc., to suit myriad applications in process plants, utility lines and HVAC.

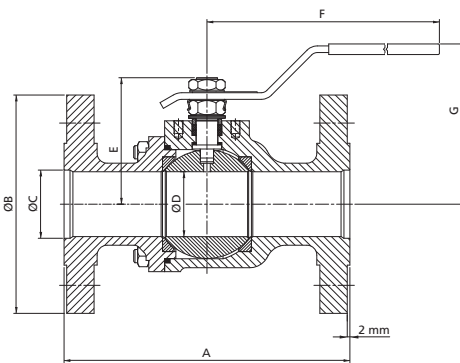
Product Portfolio

Valve	Type	End Connection	¼	⅜	½	¾	1	1¼	1½	2	2½	3	4	6	8
			8	10	15	20	25	32	40	50	65	80	100	150	200
Single-piece, Regular Bore	Fire-safe	Flanged CI 150/ 300			•	•	•		•	•	•	•	•	•	
Two-piece, Full Bore	Fire-safe	Flanged CI 150/ 300			•	•	•		•	•	•	•	•	•	•
Three-piece, Full Bore	Standard	Screwed/ Socket-weld*	•	•	•	•	•	•	•	•	•	•	•		
		Flanged CI 150/ 300/ 600			•	•	•		•	•					
	Flanged CI 2500			•	•	•		•							
	Fire-safe	Screwed/ Socket-weld*	•	•	•	•	•	•	•	•					
	IBR	Screwed/ Socket-weld	•	•	•	•	•	•	•						
Three-piece, Regular Bore	Standard	Screwed/ Socket-weld**	•	•	•	•	•	•	•			•	•		
		Flanged CI 150/ 300/ 600				•	•		•	•					
		Flanged CI 1500			•	•	•		•	•					
	Fire-safe	Screwed/ Socket-weld*				•	•	•	•	•					
	IBR	Screwed/ Socket-weld				•	•	•	•	•					

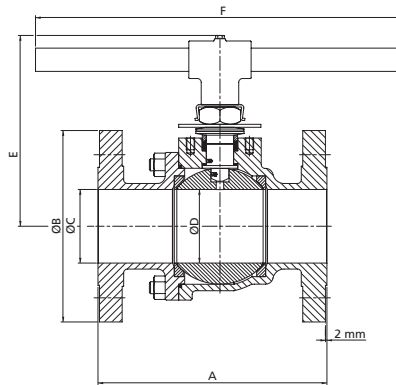
*Screwed/ socket-weld valves in sizes DN 8 to DN 50 are offered in Class 800, and sizes DN 65 and above, in Class 300.

**Sizes DN 15 to DN 50 are offered in Class 1500 also.

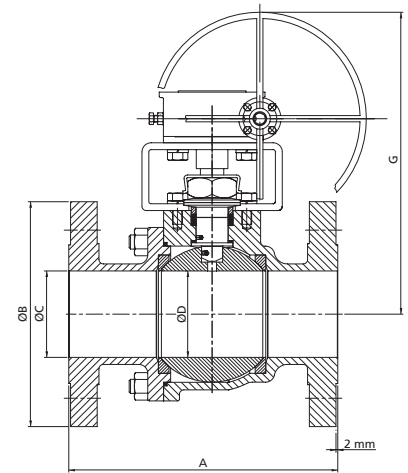
Two-piece Ball Valves - Full Bore (ASME Class 150 & 300) ISO 17292



Lever operated
(DN 15 - DN 50)



Wrench operated
(DN 65 - DN 200)



Gear operated
(DN 100 - DN 200)

Dimensions

Size		A		B		C	D	E		F	G	Wt.		ISO 5211 Base	
DN	NPS	CI 150	CI 300	CI 150	CI 300			CI 150	CI 300			CI 150	CI 300	CI 150	CI 300
15	½	108	140	90	95	13	11	38	38	120	90	1	2		
20	¾	117	152	100	115	19	17	45	45	120	97	2	3		
25	1	127	165	110	125	25	24	55	55	158	97	3	4		
40	1½	165	190	125	155	38	37	75	75	212	122	5	6	F05	F05
50	2	178	216	150	165	51	49	103	103	212	142	9	12	F07	F07
65	2½	190	241	180	190	64	62	175	175	390		14	20.5	F07	F07
80	3	203	282	190	210	76	74	185	195	390		19	28	F07	F07
100	4	229	305	230	255	102	98	235	247	*		31	45	F10	F12
150	6	394	403	280	320	152	148	285	315	**		78	105	F12	F14
200	8	457	502	345	380	203	198	345	371	980		141.5	169	F14	F16

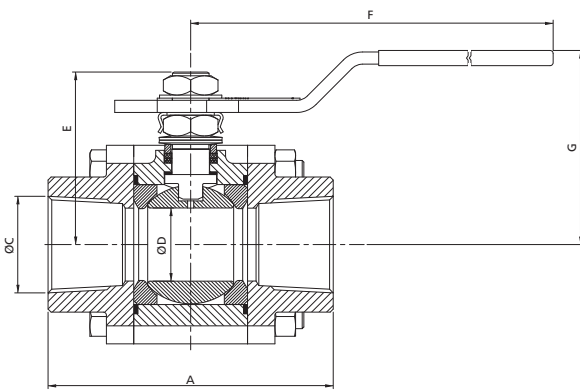
All dimensions in mm and weights in kg

*600 mm for CI 150 & 890 mm for CI 300

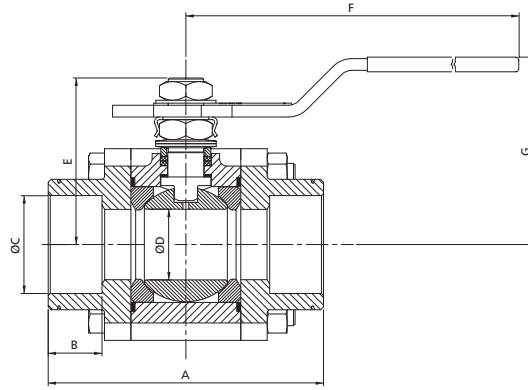
**890 mm for CI 150 & 980 mm for CI 300

API 6D design and metal-seated valves are also available on demand

Three-piece Ball Valves - Full Bore (ASME Class 150, 300, 600 & 2500) ISO 17292



Screwed



Socket-weld end

Dimensions

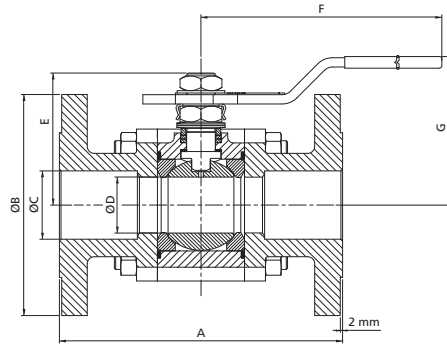
Screwed/ Socket-weld end

Size		A	B	C			D	E	F	G	Wt.
DN	NPS			SW	BSPT	NPT					
8	¼"	62	9.5	14.6 - 14.2	¼" - 19	¼" - 18	11	38	132	50	1
10	⅜"	62	9.5	18.0 - 17.6	⅜" - 19	⅜" - 18	11	38	132	50	1
15	½"	66	10	22.2 - 21.8	½" - 14	½" - 14	11	38	132	50	1
20	¾"	75	13	27.6 - 27.2	¾" - 14	¾" - 14	17	46	132	58	1
25	1"	92	13	34.3 - 33.9	1" - 11	1" - 11½	24	54	162	65	2
32	1¼"	114	13	43.1 - 42.7	1¼" - 11	1¼" - 11½	37	75	192	83	4
40	1½"	114	13	49.2 - 48.8	1½" - 11	1½" - 11½	37	75	192	83	4
50	2"	132	16	61.7 - 61.2	2" - 11	2" - 11½	49	87	202	94	6
65	2½"	185	16	74.4 - 73.9	2½" - 11	2½" - 8	62	200	390	200	15.5
80	3"	208	16	90.3 - 89.8	3" - 11	3" - 8	74	225	390	225	25
100	4"	240	19	115.7 - 115.2	4" - 11	4" - 8	98	250	600	250	39

Cold Working Pressure (CWP)
 - 69 bar, with PTFE seat
 - 103 bar, with RPTFE and special filled PTFE
 - 400 bar, with Devlon®
 - 425 bar, with PEEK

All dimensions in mm and weights in kg

Screwed/ socket-weld valves in sizes DN 8 to DN 50 have a body rating of Class 800. In larger sizes, the body is rated to Class 300.

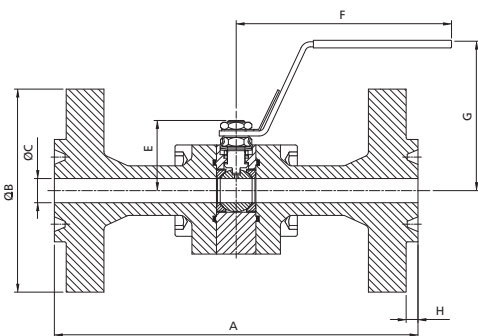


Dimensions

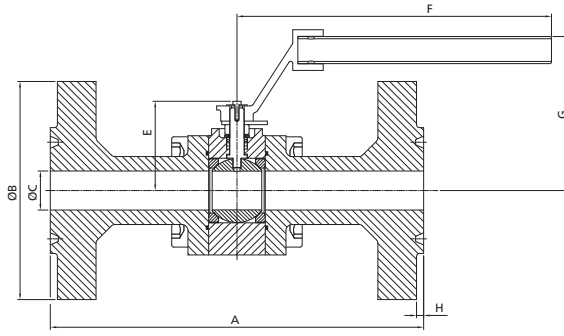
Flanged end - Class 150, 300 & 600

Size		A			B			C	D	E	F	G	Wt.		
DN	NPS	CI 150	CI 300	CI 600	CI 150	CI 300	CI 600						CI 150	CI 300	CI 600
15	½	108	140	165	90	95	95	13	11	38	122	92	2	2	2.5
20	¾	117	152	190	100	115	115	19	17	46	142	98	2	3	3.5
25	1	127	165	216	110	125	125	25	24	54	152	98	3	5	6.5
40	1½	165	190	241	125	155	155	38	37	75	212	125	8	11	12
50	2	178	216	292	150	165	165	51	49	87	212	125	13	15.5	12.5

All dimensions in mm and weights in kg



Lever operated
(DN 15 - DN 25)



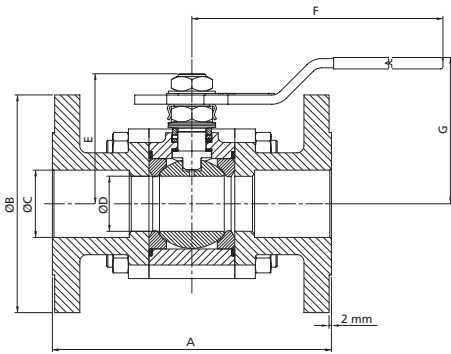
Wrench operated
(DN 40)

Flanged end - Class 2500

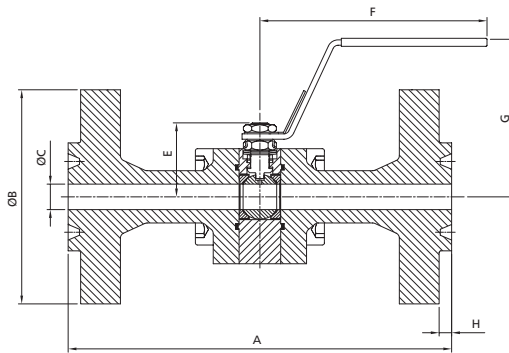
Size		A	B	C	E	F	G	H	Wt.
DN	NPS								
15	½	264	135	14.3	50	195	103	6.35	10
20	¾	273	140	20.6	66	250	125	6.35	14
25	1	308	160	25.3	92	360	153	6.35	25
40	1½	386	205	38.5	100	315	162	7.92	40

All dimensions in mm and weights in kg

Three-piece Ball Valves - Regular Bore (ASME Class 150, 300, 600 & 1500) ISO 17292



Class 150, 300 & 600



Class 1500

Dimensions

Flanged end - Class 150, 300 & 600

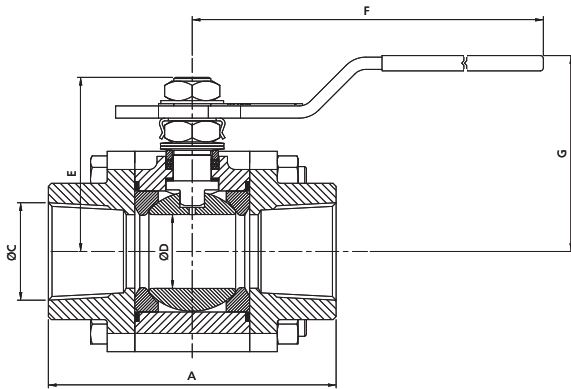
Size		A			B			C	D	E	F	G	Wt.		
DN	NPS	CI 150	CI 300	CI 600	CI 150	CI 300	CI 600						CI 150	CI 300	CI 600
20	¾	117	152	190	100	115	115	19	11	38	122	92	1.8	3.0	4
25	1	127	165	216	110	125	125	25	17	46	142	98	2.5	4.2	5.5
40	1½	165	190	241	125	155	155	38	27	56	180	117	4.7	8.0	9.5
50	2	178	216	292	150	165	165	51	37	75	212	125	7.7	12.1	10.5

All dimensions in mm and weights in kg

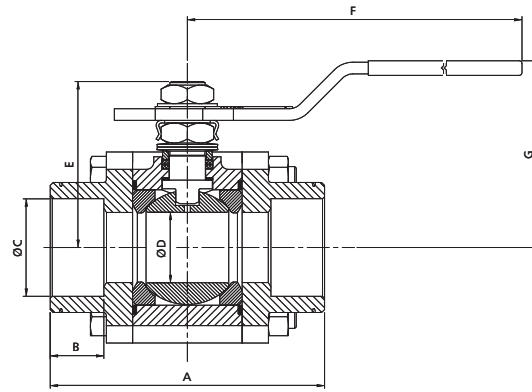
Flanged end - Class 1500

Size		A	B	C	E	F	G	H	Wt.
DN	NPS								
15	½	216	120	14.3	41	120	88	6.35	7
20	¾	229	130	14.3	41	120	88	6.35	8
25	1	254	150	20.6	54	235	120	6.35	10
40	1½	305	180	25.4	54	235	127	6.35	18
50	2	368	215	38.5	93	450	157	7.92	27

All dimensions in mm and weights in kg



Screwed



Socket-weld end

Dimensions

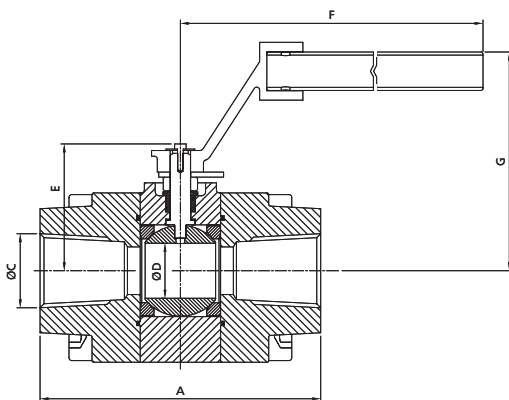
Screwed/ Socket-weld end

Size		A	B	C			D	E	F	G	Wt.
DN	NPS			SW	BSPT	NPT					
8	¼"	62	9.5	14.6 - 14.2	¼" - 19	¼" - 18	11	38	132	50	1
10	⅜"	62	9.5	18.0 - 17.6	⅜" - 19	¾" - 18	11	38	132	50	1
15	½"	66	10	22.2 - 21.8	½" - 14	½" - 14	11	38	132	50	1
20	¾"	69	13	27.6 - 27.2	¾" - 14	¾" - 14	11	38	132	50	1
25	1"	90	13	34.3 - 33.9	1" - 11	1" - 11½	17	46	132	58	1
32	1¼"	97	13	43.1 - 42.7	1¼" - 11	1¼" - 11½	24	54	162	65	2
40	1½"	103	13	49.2 - 48.8	1½" - 11	1½" - 11½	27	56	162	66	2.5
50	2"	122	16	61.7 - 61.2	2" - 11	2" - 11½	37	75	192	83	4.5
80	3"	185	16	90.3 - 89.8	3" - 11	3" - 8	62	200	390	200	17
100	4"	212	19	115.7 - 115.2	4" - 11	4" - 8	74	225	600	225	27

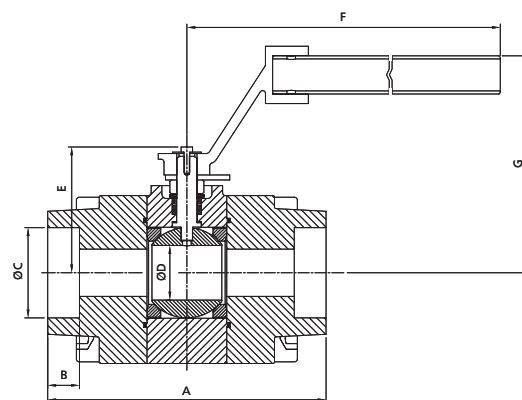
Cold Working Pressure (CWP)
 - 69 bar, with PTFE seat
 - 103 bar, with RPTFE and special filled PTFE
 - 400 bar, with Devlon®
 - 425 bar, with PEEK

All dimensions in mm and weights in kg

Valves in sizes DN 8 to DN 15 are offered in full bore construction



Screwed



Socket-weld end

Screwed/ Socket-weld end - Class 1500

Size		A	B	C			D	E	F	G	Wt.
DN	NPS			SW	BSPT	NPT					
15	½"	85	10.5 - 10.0	22.2 - 21.8	½" - 14	½" - 14	14.3	41	120	52	3
20	¾"	85	13.5 - 13.0	27.6 - 27.2	¾" - 14	¾" - 14	14.3	41	120	52	3.5
25	1"	108	13.5 - 13.0	34.3 - 33.9	1" - 11	1" - 11½	20.6	54	130	90	4
40	1½"	125	13.5 - 13.0	49.2 - 48.8	1½" - 11	1½" - 11½	25.4	54	130	90	5
50	2"	142	16.5 - 16.0	61.7 - 61.2	2" - 11	2" - 11½	38.5	88	210	155	6

All dimensions in mm and weights in kg