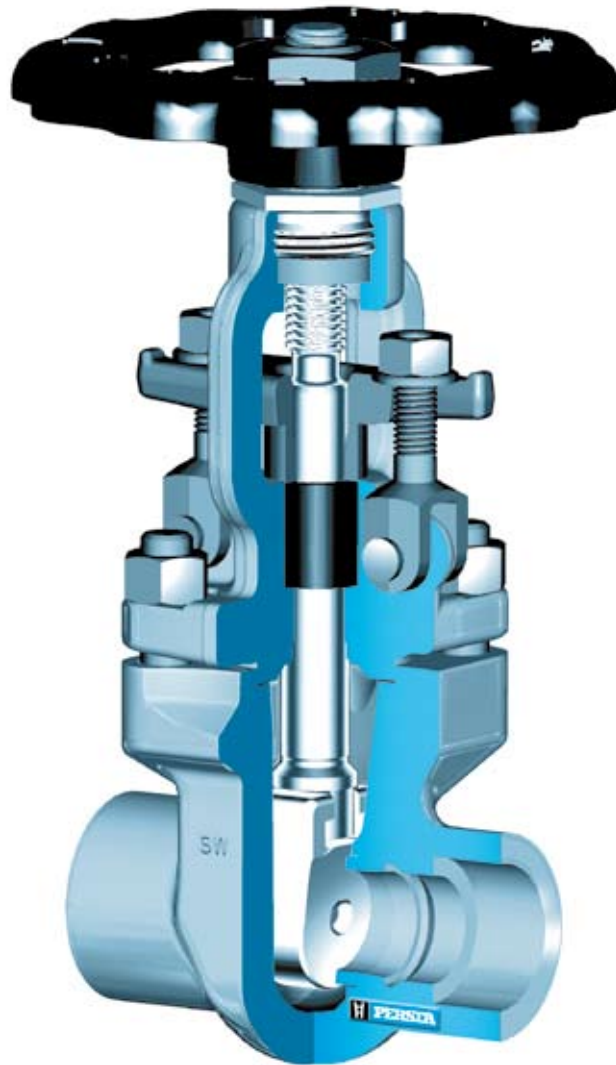


▪ Gate valves ▪ Small gate valve ▪ 808 GJ ▪ PN 10-100 ▪ DN 10-40



Range of application

Admissible operating pressure [bar] at design temperature [°C] ¹⁾

Material	PN	-200	-60	-10	20	120	150	200	250	300	350	400	450	475	480	500	510	520	530	540	550	
1.0460	10-40			40	40	40	37	35	32	28	24	21	13	8	7							
	63			63	63	63	56	50	45	40	36	32	21	13	12							
	100			100	100	100	90	80	70	60	56	50	34	21	19							
1.7335	10-40			40	40	40	40	40	40	38	36	34	32	31	29	24	19	15	12	9		
	63			63	63	63	63	63	63	61	58	56	52	51	47	40	32	25	20	15		
	100			100	100	100	100	100	100	95	91	87	81	79	74	62	49	38	30	23		
1.0566 ²⁾	10-40			40	40	40	37	35	34	28												
	63			63	63	63	58	50	45	40												
	100			100	100	100	92	80	70	60												
1.4571	10-40	40	40	40	40	40	38	35	33	31	30	29										
	63	63	63	63	63	63	57	50	47	44	42	40										
	100	100	100	100	100	100	90	80	75	70	65	60										

1) Operating temperature = design temperature minus temperature surcharge acc. to DIN regulations.

2) At temperature > 50 °C only applicable for short-time service.

▪ **Gate valves** ▪ **Small gate valve** ▪ **808 GJ** ▪ **PN 10-100** ▪ **DN 10-40**

Standard features

- Die-forged body and bonnet
- Full bore
- Wedge
- Outside screw and yoke
- Non-turning rising stem
- Available with flange, socket and butt-weld ends

Pressure and temperature ratings

- Pressure rating up to 100 bar
- Temperature rating up to 550 °C

Materials

- 1.0460
- 1.7335
- 1.0566
- 1.4571

Further materials on request.

Media

Depending on the material the gate valves are suitable for water, gas, oil and other non aggressive media

Fields of application

Chemical industries, power plants, ship building and other

Design Highlights

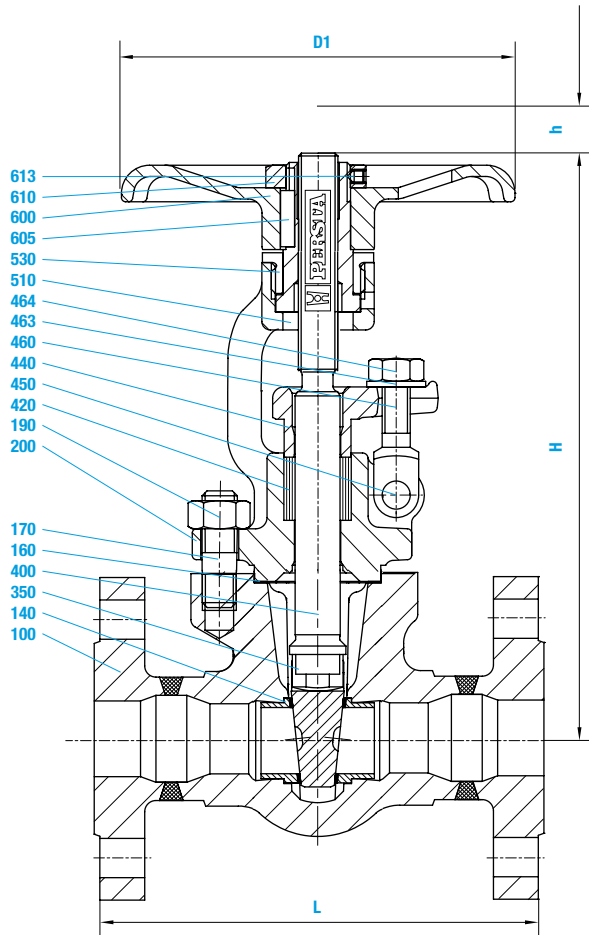
- Die-forged body and bonnet
- Wedge made of stellite
- Gasket, male and female face
- Full bore
- Non-turning, rising stem

Benefits

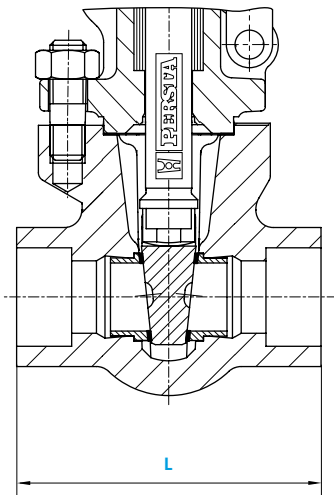
- Free from porosity and shrink holes
- Extremely resistant to wear
- Blow out protection
- No reduction in seat area
- Minimal wear of the gland-packing

■ Gate valves ■ Small gate valve ■ 808 GJ ■ PN 10-100 ■ DN 10-40

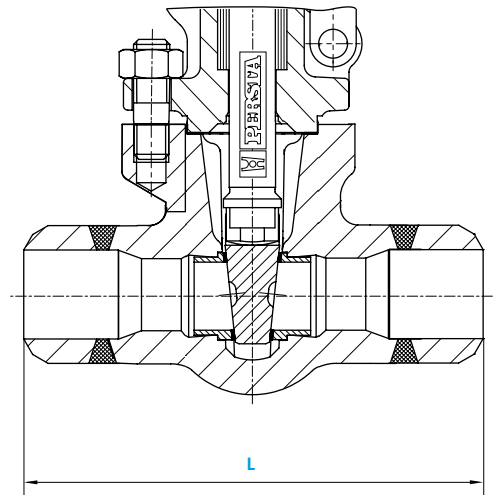
Small gate valve FL-version



Socket welding version



BW-version



■ Gate valves ■ Small gate valve ■ 808 GJ ■ PN 10-100 ■ DN 10-40

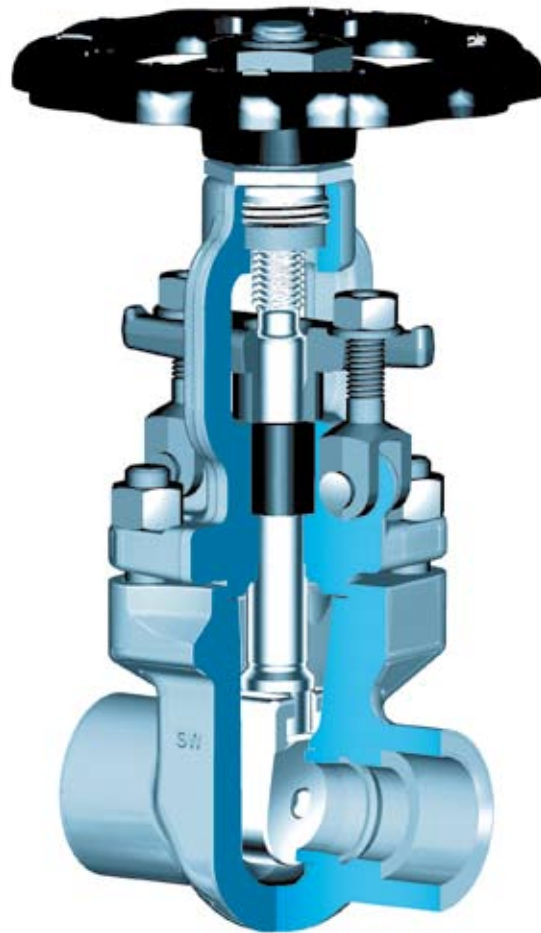
Materials					
Pos.	Component	1.0460 (21)	1.7335 (44)	1.0566 (25)	1.4571 (87)
100	Body	1.0460	1.7335	1.0566	1.4571
140	Seat ring	1.4571	1.4571 ¹⁾	1.4571	1.4571
160	▶ Gasket	Graphite	Graphite	Graphite	Graphite
170	Stud	1.7709	1.4923	A4-70	A4-70
190	Hexagonal nut	1.7218	1.4923	A4-70	A4-70
200	Bonnet	1.0460	1.7335	1.0566	1.4571
350	Wedge	1.4021	2.5788	2.5788	2.5788
400	▶ Stem	1.4021	1.4021	1.4571	1.4571
420	▶ Packing	Graphite	Graphite	Graphite	Graphite
440	Gland flange	1.0460	1.0460	1.4571	1.4571
450	Rivet	1.1181	1.1181	A4-50	A4-50
460	Gland bolt	1.1181	1.1181	1.4571	1.4571
463	Washer	St	St	A4-50	A4-50
464	Hexagonal nut	1.1181	1.1181	A4-70	A4-70
510	▶ Yoke sleeve	1.0718	1.0718	1.0718	1.0718
530	Yoke nut	1.0718	1.0718	1.0718	1.0718
600	Handwheel	0.7040	0.7040	0.7040	0.7040
605	Key	1.0060	1.0060	1.0060	1.0060
610	Hexagonal nut	St	St	St	St
613	Screw pin	45H	45H	45H	45H

▶ Spare parts

1) Welded on with Stellite

Dimensions/mm and Kvs-values								
PN	DN	FL L	BW L	SM L	H	Stroke	D1	Kvs (m ³ /h)
10-100	10			105	205	27	140	
	15	130	130	105	205	27	140	14,2
	20	150	150	105	205	27	140	29,2
	25	160	160	105	205	27	140	39,5
	32	180	180	115	228	35	180	74,7
	40	240	240	115	228	35	180	95,3

- Gate valves
- VALTRA Small gate valve
- 800/808 GJ
- Class 800 (PN 10-40)
- NPS 1/2 - 2 (DN 15-50)



Range of application

		Admissible operating pressure [bar] at design temperature [°C] ¹⁾												
Material	PN	-10	20	100	150	200	250	300	350	400	450	475	480	
1.0460	10-40	40	40	40	37	35	32	28	24	21	13	8	7	

1) Operating temperature = design temperature minus temperature surcharge acc. to DIN regulations.

		Admissible operating pressure [bar] at design temperature [°C] ¹⁾														
Material		-29	38	93,5	149	204,5	260	315,5	343,5	371	399	426,5	454,5	482	510	538
ASTM A 105	Class 800	136,2	136,2	124,1	120,7	116,6	110,0	100,7	98,6	97,9	92,7	75,9	49,3	31,7	19,0	9,7

1) Operating temperature = design temperature minus temperature surcharge acc. to DIN regulations.

▪ **Gate valves** ▪ VALTRA Small gate valve ▪ 800/808 GJ ▪ Class 800 (PN 10-40) ▪ NPS 1/2 - 2 (DN 15-50)

Standard features

- Die-forged body and bonnet
- Full bore
- Wedge
- Outside screw and yoke
- Non-turning rising stem
- Available with flange, socket and butt-weld ends

Pressure and temperature ratings

- Pressure rating up to 136,2 bar
- Temperature rating from -10 °C up to 538 °C

Materials

- 1.0460
- ASTM A 105

Further materials on request.

Media

Depending on the material the gate valves are suitable for water, gas, oil and other non aggressive media

Fields of application

Chemical industries, power plants, ship building and other

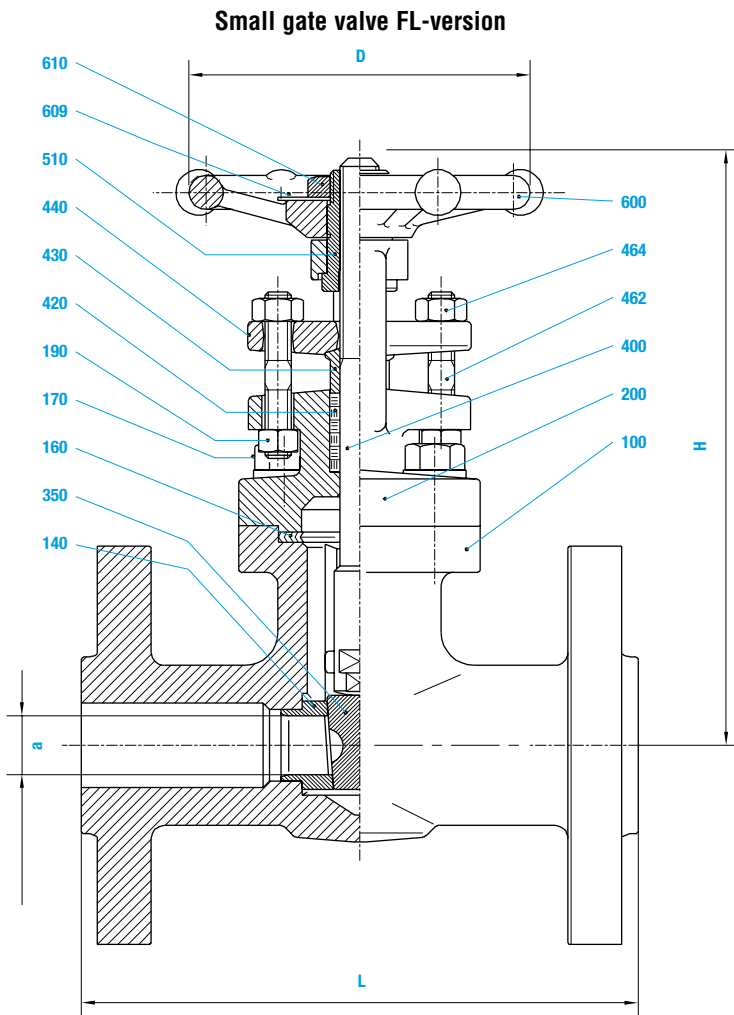
Design Highlights

- Die-forged body and bonnet
- Wedge made of stellite
- Gasket, male and female face
- Full bore
- Non-turning, rising stem

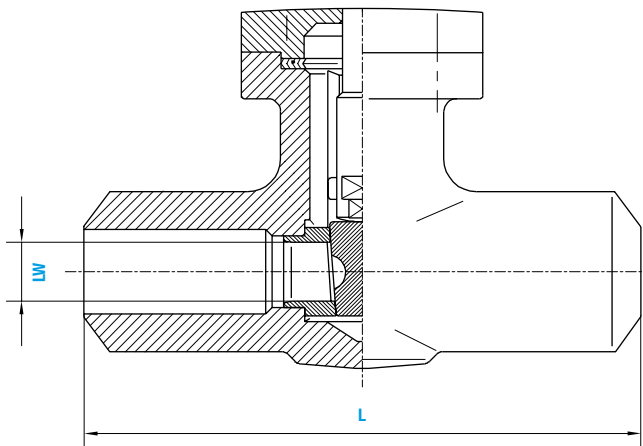
Benefits

- Free from porosity and shrink holes
- Extremely resistant to wear
- Blow out protection
- No reduction in seat area
- Minimal wear of the gland-packing

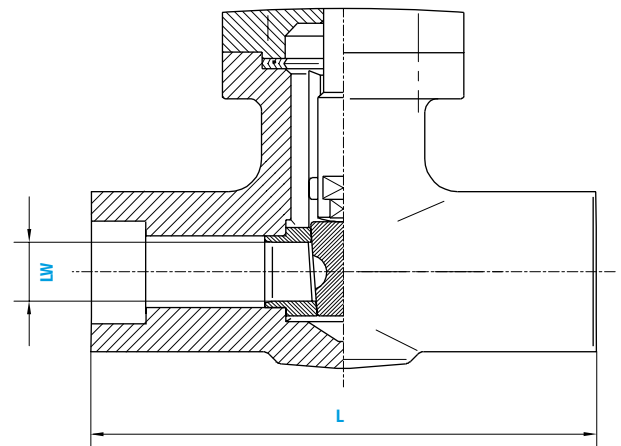
▪ Gate valves ▪ VALTRA Small gate valve ▪ 800/808 GJ ▪ Class 800 (PN 10-40) ▪ NPS 1/2 - 2 (DN 15-50)



BW-version



Socket welding version



■ Gate valves ■ VALTRA Small gate valve ■ 800/808 GJ ■ Class 800 (PN 10-40) ■ NPS 1/2 - 2 (DN 15-50)

Materials			
Pos.	Component	1.0460 (21) FL	ASTM A 105 (B1) BW / SM
100	Body	1.0460	ASTM A 105
140	Seat ring	ASTM A 276 type 410	ASTM A 276 type 410
160	▶ Gasket	Spiral-Grafit	Spiral-Grafit
170	Stud	AISI 410	AISI 410
190	Hexagonal nut	ASTM A 194 2H	ASTM A 194 2H
200	Bonnet	1.0460	ASTM A 105
350	Wedge	ASTM A 182 F6	ASTM A 182 F6
400	▶ Stem	ASTM A 276 type 410	ASTM A 276 type 410
420	▶ Packing	Graphite	Graphite
430	Gland ring	ASTM A 276 type 410	ASTM A 276 type 410
440	Gland flange	ASTM A 105	ASTM A 105
462	Stud	AISI 410	AISI 410
464	Hexagonal nut	ASTM A 194 2H	ASTM A 194 2H
510	▶ Yoke sleeve	ASTM A 582 type 416	ASTM A 582 type 416
600	Handwheel	St	St
609	Washer	St	St
610	Hexagonal nut	St	St

▶ Spare parts

Dimensions/mm				
808 GJ NPS	L	H	D	LW
1/2	90	152	90	14,0
3/4	110	182	110	19,0
1	127	214	110	24,0
1 1/4	127	247	130	30,0
1 1/2	127	270	130	37,0
2	150	333	180	48,0
800 GJ NPS	L	H	D	LW
1/2	80	145	70	10,0
3/4	90	152	90	14,0
1	110	182	110	19,0
1 1/4	127	214	110	24,0
1 1/2	127	247	130	30,0
2	127	270	130	37,0
808 GJ DN	L	H	D	PN 10-40 a
15	130	152	90	14,0
20	150	182	110	18,0
25	160	214	110	24,0
40	240	270	130	36,5
50	250	333	180	48,0

Weights/kg and Kvs-values		
808 GJ NPS	SM	Kvs (m ³ /h)
1/2	2,2	14,2
3/4	3,5	25,2
1	5,0	37,2
1 1/4	6,5	61,0
1 1/2	8,5	95,3
2	17,0	149,0
800 GJ NPS	SM	
1/2	1,6	7,2
3/4	2,2	14,3
1	3,5	26,3
1 1/4	5,0	40,9
1 1/2	6,5	63,9
2	8,5	100,0
808 GJ DN	FL	
15	4,5	14,2
20	6,5	25,2
25	7,9	37,2
40	13,0	95,3
50	24,5	149,0