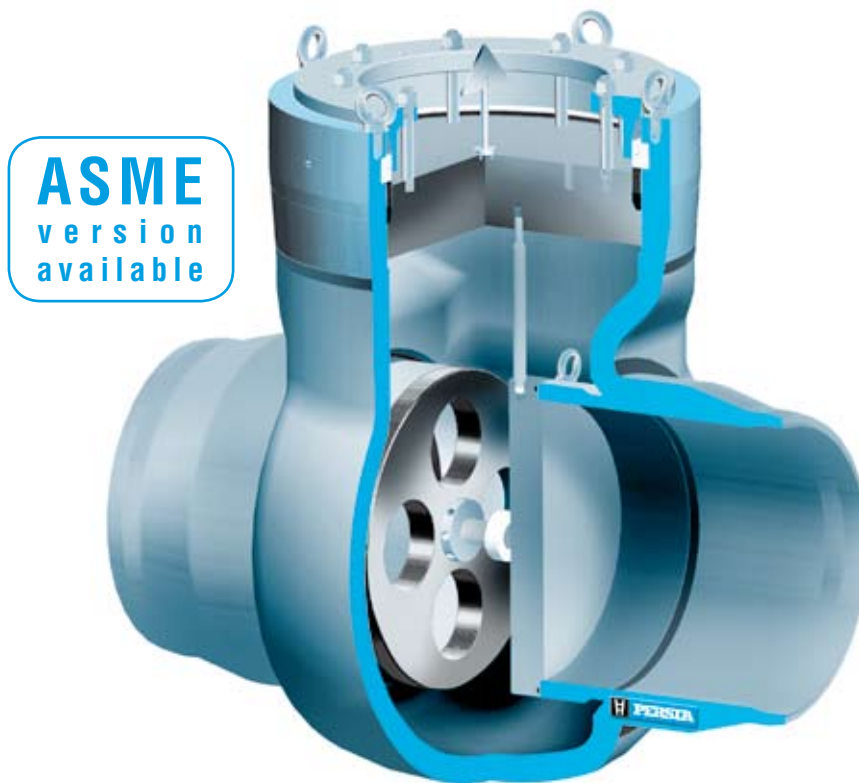


- High pressure line blind valve
- DPV 10
- 990 VW
- PD 10
- DN 350-700



**Range of application**

BW-Version Material	PD	Admissible operating pressure [bar] at design temperature [°C] <sup>1)</sup>																																
		120	150	200	250	300	350	400	410	420	430	440	450	460	470	480	490	500	510	520	530	540	550	560	570	580	590	600	610	620	630	640	650	
<b>1.0425</b>	<b>10</b>	100	100	94	82	74	62	50	48	45	43	41	38	34	28	23																		
<b>1.5415</b>	<b>10</b>	120	120	112	103	88	85	82	82	81	81	80	79	79	78	78	68	53	40	32	25													
<b>1.7335</b>	<b>10</b>	120	120	120	118	109	103	97	96	95	94	92	91	91	90	89	89	81	68	54	44	35	28	23	18									
<b>1.7383</b>	<b>10</b>	120	120	120	120	118	109	103	102	101	99	98	97	96	95	94	89	79	69	61	53	46	40	34	30	26	22	20						
<b>1.4903</b>	<b>10</b>	136	136	136	136	136	136	136	136	136	136	136	136	136	136	136	134	122	119	110	101	93	84	76	68	61	54	48	42	37	32	27	24	21

<sup>1)</sup> Operating temperature = design temperature minus temperature surcharge acc. to DIN regulations.

▪ **High pressure line blind valve** ▪ DPV 10 ▪ 990 VW ▪ PD 10 ▪ DN 350-700

**Standard features**

- Welded seat ring
- Position indicator
- Pressure sealing bonnet acc. to VGB-guidelines

**Pressure and temperature ratings**

- Pressure rating up to 136 bar
- Temperature rating up to 650 °C

**Materials**

- 1.0425
- 1.4903
- 1.5415
- 1.7335
- 1.7383

Further materials on request.

**Media**

Depending on the material line blind valves are suitable for water, gas, oil and other non aggressive media

**Fields of application**

High temperature steam and water, refining (catalytic reformers and hydrocrackers), petrochemical and chemical industries

**Design Highlights**

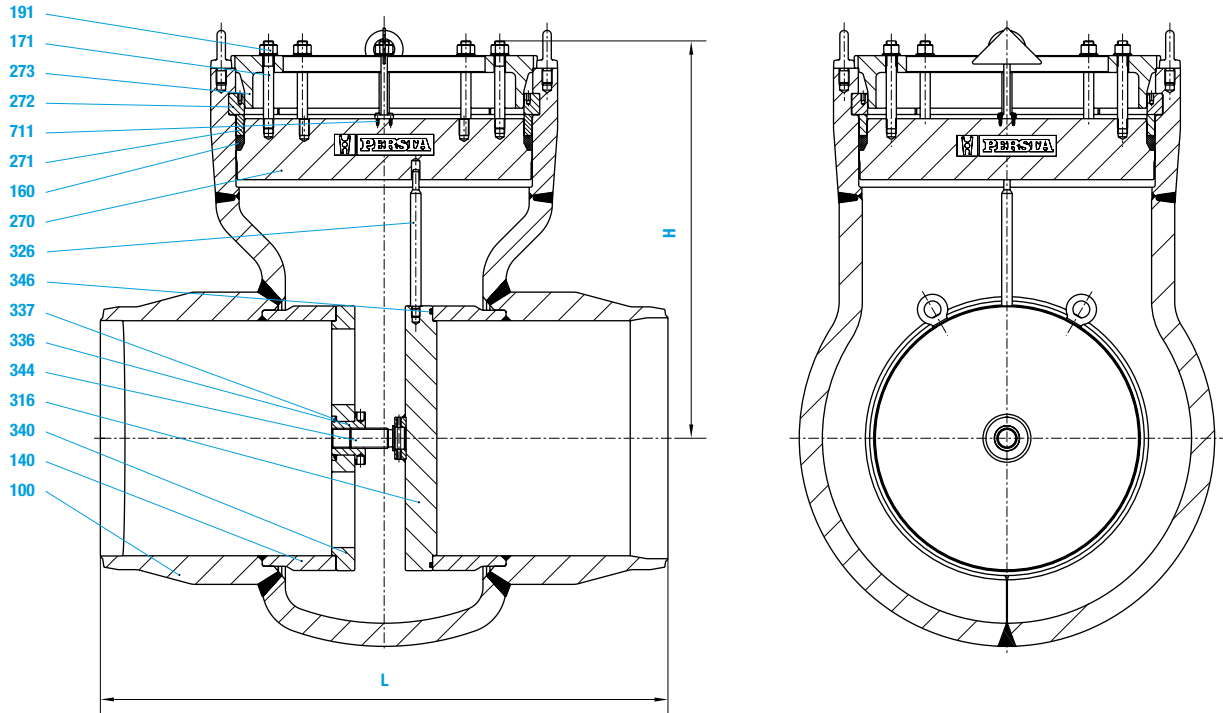
- Thin wallthickness
- Position indicator
- Pressure sealing bonnet

**Benefits**

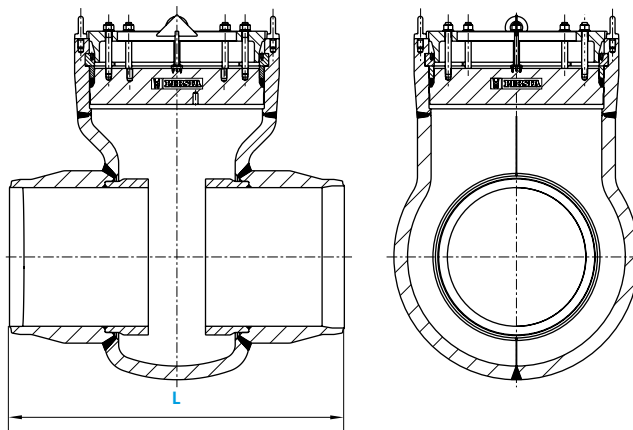
- Less temperature stresses
- Indicates if seal plate is mounted or dismantled
- Best possible sealing function

▪ High pressure line blind valve ▪ DPV 10 ▪ 990 VW ▪ PD 10 ▪ DN 350-700

**Closed passage (seal plate mounted)**



**Free passage (seal plate dismantled)**



Special design with blow-out attachment or guide-insert on request

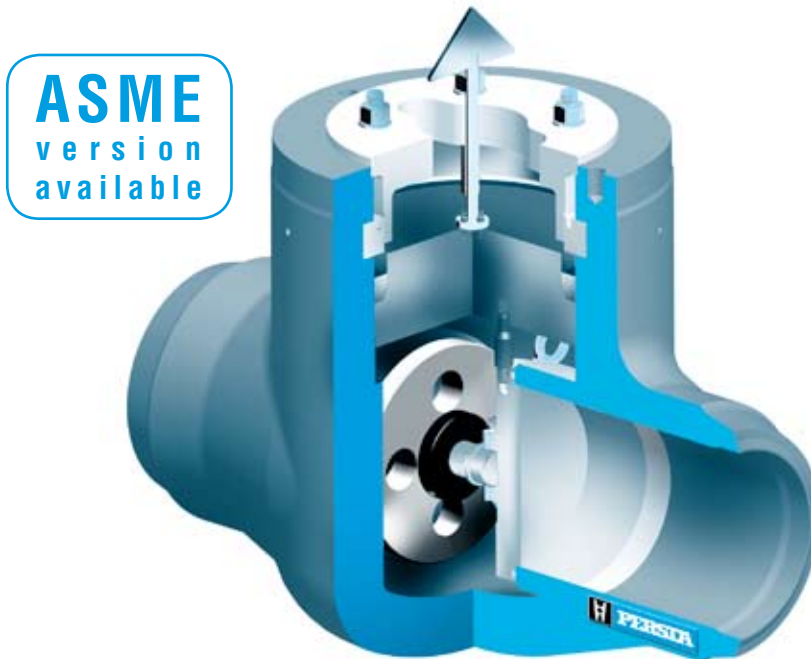
■ High pressure line blind valve ■ DPV 10 ■ 990 VW ■ PD 10 ■ DN 350-700

Materials						
Pos.	Component	1.0425 (22)	1.5415 (42)	1.7335 (44)	1.7383 (45)	1.4903 (63)
100	Body	1.0425	1.5415	1.7335	1.7383	1.4903
140	Seat ring	1.0460	1.5415	1.7335	1.7383	1.4903
	welded on with	Stellite	Stellite	Stellite	Stellite	Stellite
160	▶ Gasket	Graphite	Graphite	Graphite	Graphite	Graphite
171	Stud	1.7709	1.7709	1.7709	1.7709	1.7709
191	Hexagonal nut	1.7218	1.7218	1.7218	1.7218	1.7218
270	Cover	1.7383	1.7383	1.7383	1.7383	1.4903
271	Ring	1.7383	1.7383	1.7383	1.7383	1.4903
272	Segmentring	1.7383	1.7383	1.7383	1.7383	1.4903
273	Cover	1.0460	1.0460	1.0460	1.0460	1.0460
316	Cone plate	1.7383	1.7383	1.7383	1.7383	1.4903
326	Tension pin	1.4021	1.4021	1.4021	1.4021	1.4021
336	Yoke sleeve	CW 713 R	CW 713 R	CW 713 R	CW 713 R	CW 713 R
340	Plate	1.7383	1.7383	1.7383	1.7383	1.7383
337	Locking ring	Spring Steel	Spring Steel	Spring Steel	Spring Steel	Spring Steel
344	Stud bolt	1.4021	1.4021	1.4021	1.4021	1.4021
346	▶ O-Ring	Viton	Viton	Viton	Viton	Viton
711	Bolt	8.8	8.8	8.8	8.8	8.8

▶ Spare parts

Dimensions/mm and Weights/kg				
DN	DS	L	H	kg
<b>350</b>	<b>330</b>	850	645	710
<b>400</b>	<b>375</b>	950	690	1150
<b>450</b>	<b>419</b>	1050	710	1400
<b>500</b>	<b>464</b>	1150	861	1800
<b>600</b>	<b>559</b>	1350	945	2540
<b>700</b>	<b>640</b>	1550	1150	3750

▪ High pressure line blind valve ▪ DPV 16-63 ▪ 990 VW ▪ PD 16-63 ▪ DN 65-600



**Range of application**

BW-Version Material	PD	Admissible operating pressure [bar] at design temperature [°C] <sup>1)</sup>																																											
		120	150	200	250	300	350	400	410	420	430	440	450	460	470	480	490	500	510	520	530	540	550	560	570	580	590	600	610	620	630	640	650												
1.0460	16	160	160	151	132	118	99	80	76	73	69	65	61	54	45	37																													
	25	250	250	235	206	184	155	125	119	113	107	102	96	85	71	58																													
	32	320	320	302	264	236	198	160	153	145	138	130	123	109	91	75																													
	40	400	400	377	330	295	248	200	191	182	172	163	153	136	113	93																													
1.5415	16	192	192	179	165	141	137	132	131	130	129	128	127	126	125	124	109	85	64	51	41																								
	25	300	300	280	258	221	213	206	205	203	202	200	199	197	196	194	170	132	101	79	64																								
	32	385	385	358	330	283	273	264	262	260	258	256	255	253	251	249	217	170	129	102	81																								
	40	480	480	448	413	354	342	330	328	325	323	321	318	316	314	311	272	212	161	127	102																								
1.7335	16	192	192	192	189	174	165	156	154	152	150	148	146	145	144	143	142	129	109	86	70	57	44	36	29																				
	25	300	300	300	294	272	258	243	240	237	234	231	228	227	225	224	222	202	170	134	109	88	69	57	46																				
	32	385	385	385	377	349	330	311	307	304	300	296	292	290	289	287	285	258	217	172	140	113	88	72	59																				
	40	481	481	481	471	436	413	389	384	380	375	370	365	363	364	358	356	323	272	215	175	141	110	91	74																				
1.7383	16	192	192	192	192	189	174	165	163	161	159	157	156	154	152	150	143	127	111	97	85	74	64	55	48	41	36	32																	
	25	300	300	300	300	294	272	258	255	252	249	246	243	240	237	234	224	199	174	152	132	115	100	85	75	65	56	49																	
	32	384	384	384	384	377	349	330	326	322	319	315	311	307	304	300	287	255	223	194	170	147	128	109	96	83	72	63																	
	40	480	480	480	480	471	436	413	408	403	398	384	389	384	379	375	358	318	278	243	212	184	160	137	120	104	90	79																	
1.6368	16	263	263	263	263	263	263	263	263	263	257	231	198	165	131	98	65																												
	25	410	410	410	410	410	410	410	410	410	402	360	309	257	205	153	102																												
	32	525	525	525	525	525	525	525	525	525	515	482	396	330	262	196	130																												
	40	657	657	657	627	657	657	657	657	657	657	643	577	495	412	328	245	163																											
1.4903	16	272	272	272	272	272	272	272	272	272	272	272	272	272	268	245	239	221	203	186	169	153	137	123	108	96	85	74	64	55	48	41													
	25	425	425	425	425	425	425	425	425	425	425	425	425	425	425	418	383	372	344	316	290	263	238	213	191	169	150	132	115	100	85	75	65	56											
	32	544	544	544	544	544	544	544	544	544	544	544	544	544	544	536	490	477	441	405	371	338	305	273	245	217	192	170	147	128	109	96	83	72	63										
	40	680	680	680	680	680	680	680	680	680	680	680	680	680	680	669	613	596	552	507	464	422	382	342	306	271	240	212	184	160	137	120	104												
1.4901	16	272	272	272	272	272	272	272	272	272	272	272	272	272	272	271	254	237	221	205	190	176	161	147	133	119	106	94	81	70	61	52													
	25	425	425	425	425	425	425	425	425	425	425	425	425	425	425	425	425	425	425	425	425	425	425	425	425	425	425	425	425	425	425	425	425	425	425										
	32	544	544	544	544	544	544	544	544	544	544	544	544	544	544	544	544	544	544	544	544	544	544	544	544	544	544	544	544	544	544	544	544	544	544	544									
	40	680	680	680	680	680	680	680	680	680	680	680	680	680	680	680	680	680	680	680	680	680	680	680	680	680	680	680	680	680	680	680	680	680	680	680									

1) Operating temperature = design temperature minus temperature surcharge acc. to DIN regulations. Design according to working data PD 63 on request

---

▪ **High pressure line blind valve** ▪ DPV 16-63 ▪ 990 VW ▪ PD 16-63 ▪ DN 65-600

**Standard features**

- Valve body made of forged steel with welded seat rings
- Position indicator
- Pressure sealing bonnet acc. to VGB-guidelines

**Pressure and temperature ratings**

- Pressure rating up to 680 bar
- Temperature rating up to 650 °C

**Materials**

- 1.0460
- 1.4901
- 1.4903
- 1.5415
- 1.6368
- 1.7335
- 1.7383

Further materials on request.

**Media**

Depending on the material line blind valves are suitable for water, gas, oil and other non aggressive media

**Fields of application**

High temperature steam and water, refining (catalytic reformers and hydrocrackers), petrochemical and chemical industries

---

**Design Highlights**

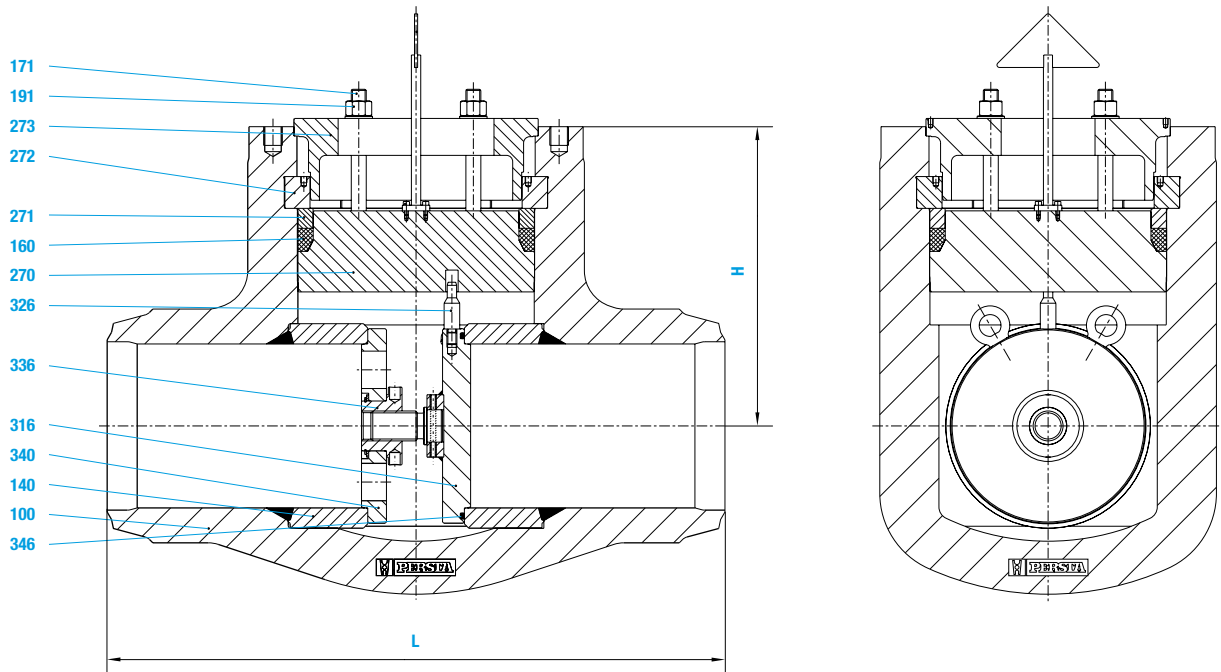
- Valve body and cover made of forged steel
- Position indicator
- Pressure sealing bonnet
- Cover can be used for dismantling of the cover fastener

**Benefits**

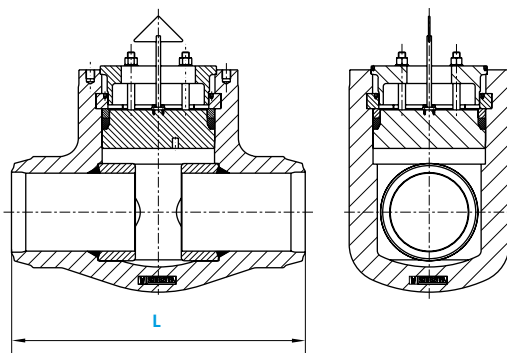
- Free from porosity and shrink holes
- Indicates if seal plate is mounted or dismantled
- Best possible sealing function
- No special tools are necessary for dismantling

▪ High pressure line blind valve ▪ DPV 16-63 ▪ 990 VW ▪ PD 16-63 ▪ DN 65-600

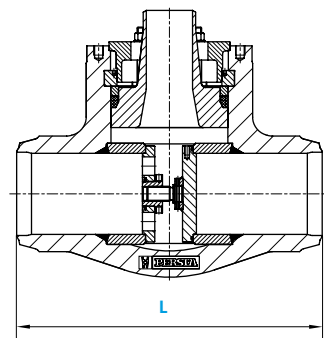
**Closed passage (seal plate mounted)**



**Free passage  
(seal plate dismantled)**



**With blow-out attachment  
(seal plate mounted)**



Special design with blow-out attachment or guide-insert on request

▪ High pressure line blind valve ▪ DPV 16-63 ▪ 990 VW ▪ PD 16-63 ▪ DN 65-600

Materials								
Pos.	Component	1.0460 (21)	1.5415 (42)	1.7335 (44)	1.7383 (45)	1.6368 (46)	1.4903 (63)	1.4901 (66)
100	Body	1.0460	1.5415	1.7335	1.7383	1.6368	1.4903	1.4901
140	Seat ring	1.0460	1.5415	1.7335	1.7383	1.6368	1.4903	1.4901
	welded on with	Stellite	Stellite	Stellite	Stellite	Stellite	Stellite	Stellite
160	▶ Gasket	Graphite	Graphite	Graphite	Graphite	Graphite	Graphite	Graphite
171	Tension screw	A 193 B7	A 193 B7	A 193 B7	A 193 B7	A 193 B7	A 193 B7	A 193 B7
191	Hexagonal nut	A 194 2H	A 194 2H	A 194 2H	A 194 2H	A 194 2H	A 194 2H	A 194 2H
270	Cover	1.7383	1.7383	1.7383	1.7383	1.4903	1.4903	1.4901
271	Ring	1.7383	1.7383	1.7383	1.7383	1.4903	1.4903	1.4901
272	Segmentring	1.7383	1.7383	1.7383	1.7383	1.4903	1.4903	1.4901
273	Cover	1.0460	1.0460	1.0460	1.0460	1.0460	1.0460	1.0460
316	Cone plate	1.7383	1.7383	1.7383	1.7383	1.4903	1.4903	1.4901
326	Tension pin	1.4021	1.4021	1.4021	1.4021	1.4021	1.4021	1.4021
336	Yoke sleeve	CW 713 R	CW 713 R	CW 713 R	CW 713 R	CW 713 R	CW 713 R	CW 713 R
340	Plate	1.7383	1.7383	1.7383	1.7383	1.7383	1.7383	1.7383
346	▶ O-Ring	Viton	Viton	Viton	Viton	Viton	Viton	Viton
	▶ Spare parts							

Dimensions/mm and Weights/kg															
DN	DPV 16			DPV 25			DPV 32			DPV 40			DPV 63		
	L	H	kg	L	H	kg	L	H	kg	L	H	kg	L	H	kg
65							330	208	59,0	330	231	59			
80	305	207	49	305	207	49	368	221	91,0	368	246	91			
100	406	231	83	406	231	83	457	250	150,0	457	278	150			
125	483	285	137	483	285	137	533	303	288,0	533	337	288			On request
150	559	321	265	559	321	265	609	388	445,0	609	431	445			
200	711	401	401	711	401	401	762	431	796,0	762	479	796			
250	864	477	744	864	477	744	1270	528	1542,0	1270	587	1542			
300	991	543	1182	991	543	1182									
350															
400		On request			On request			On request			On request				
450															
500															
600															