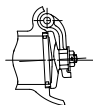


Fig. 125FCO

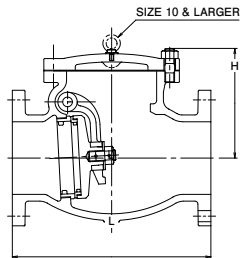
- Bronze trim

Fig. 125FCOS

- Stainless steel trim (13 Cr.)



SIZE 4 & SMALLER



SIZE 10 & LARGER

Materials

Parts	Material	ASTM Spec.	
		125FCO	125FCOS
Body	Cast Iron	FC200	
Cover	Cast Iron	FC200	
Disc	2 to 4	Cast Bronze/Stainless Steel	CAC406 403SS
	5 & larger	Cast Iron	FC200
Hinge pin	Forged Brass/Stainless Steel	C3771	403SS
Disc seat ring	Cast Bronze/Stainless Steel	CAC406	403SS
Body seat ring	Cast Bronze/Stainless Steel	CAC406	403SS
Arm	Stainless Steel	A351 Gr. CF8/SCS13A	
Gasket	Soft Steel		
Cover bolt/nut	Carbon Steel		

For Class 125 Valves Pressure-Temperature Ratings, refer to page 2.

Dimensions

Valve Size	NPS	2	2 1/2	3	4	5	6	8	10	12	14	mm
	DN	50	65	80	100	125	150	200	250	300	350	
L Face-to-face		203	216	241	292	330	356	495	622	698	787	
H Height (OPEN)		111	121	145	165	207	225	268	315	356	381	