

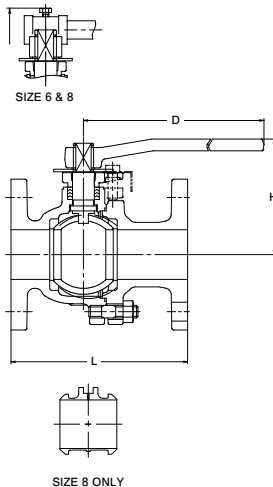
CLASS 125

BALL VALVE (Full Bore)

Fig. 125FCTB



Blowout-proof stem



Materials

Parts	Material	ASTM Spec.
Body	Cast Iron	A126 CL. B
Body cap	Cast Iron	A126 CL. B
Stem	Stainless Steel	403SS
Ball	Stainless Steel	304SS
Grand packing	PTFE	
Gasket	PTFE	
Ball seat	PTFE	
Cap bolt/nut	Carbon Steel	
Handle	Ductile Iron	

Design Specifications

Items	
Shell wall thickness and general valve design	KITZ Standard
Face-to-face dimensions, end-to-end dimensions	ASME B16.10 Class150
End flange dimensions, gasket contact facing	ASME B16.1 Class125

For Pressure-Temperature Ratings, refer to individual catalog(No.E-201).

Dimensions

Valve Size	NPS	2	2 1/2	3	4	6	8	mm
	DN	50	65	80	100	150	200	
L Face-to-face		178	190	203	229	394	457	
H Height		120	155	165	200	295	355	
D Handle		230	400	400	460	1000	1500	