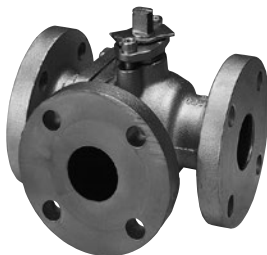


**Fig. 10FCTB2L**

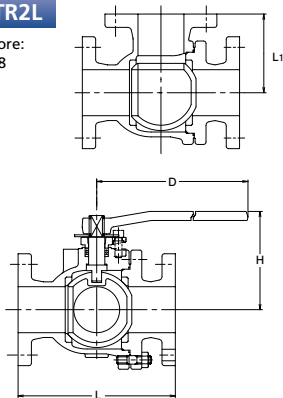
- Full Bore:  
Size 1 1/2 to 4



Blowout-proof stem

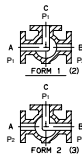
**Fig. 10FCTR2L**

- Reduced Bore:  
Size 5 to 8



### Materials

Parts	Material	JIS Spec.
Body	Cast Iron	FC200
Body cap	Cast Iron	FC200
Stem	Stainless Steel	403SS
Ball	Stainless Steel	304SS
Grand packing	PTFE	
Gasket	PTFE	
Ball seat	PTFE	
Cap bolt/nut	Carbon Steel	
Handle	Ductile Iron	FCD400-15



### Note:

- ① Flow is between Ports "A" and "C" in Form 1. Flow is between Ports "B" and "C" in Form 2. Flow paths in Form 1 and Form 2 can be exchanged with each other.
- ② When the fluid pressure P2 in the closed path is higher than P1 in the open path, a little fluid leakage may occur in P1 through the ball seat of the closed path.

### Design Specifications

Items	
Shell wall thickness	JIS B2031
Face-to-face dimensions, end-to-end dimensions	KITZ Standard
End flange dimensions, gasket contact facing	JIS B2239 10K

For Pressure-Temperature Ratings, refer to individual catalog(No.E-201).

### Dimensions

Valve Size	B	1 1/2	2	2 1/2	3	4	5	6	8
	A								
L Face-to-face		210	220	250	280	330	370	430	540
L1		105	110	125	130	165	185	215	270
H Height		115	120	155	165	200	205	225	295
D Handle		230	230	400	400	460	460	460	1000

mm