

Ductile Iron PFA Lined Butterfly Valves

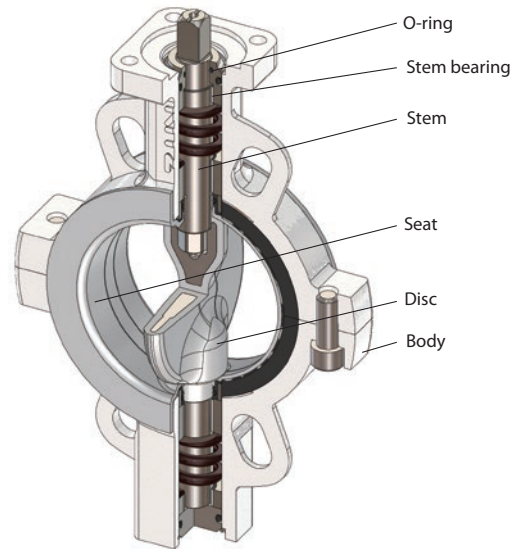
PFA lined Butterfly valves applicable to high corrosive fluids.

Specification

- Size 50 to 300mm (2" to 12")
- Product code 10LJF
- Maximum service pressure 1.0MPa
- Service temperature range -10 to +150°C
Note: Refer to Pressure-Temperature Ratings.
- Coupling flanges JIS2220 / 2239 10K
Note: JIS5K and ASME Class 150 are optional.
- Automatic operation Please contact us

Standard Materials

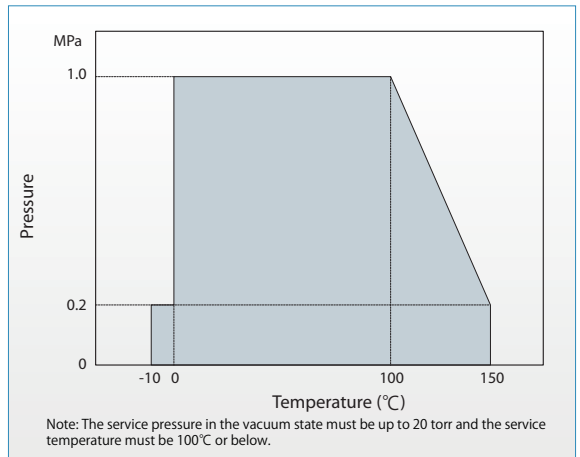
Parts	Materials
Body	FCD450-10
Disc	SCS13A+PFA
Seat Liner	PFA
Back Up Rubber	FKM



Feature

- Various fluids can be applicable for PFA-lined internal wetted parts.
- High-grade PFA prevents troubles from corrosive fluids permeation.
- Sealing mechanism with coil springs realizes high sealing performance.
- Original stem sealing design prevents external fluid leakage.
- Easy maintenance with easily disassembled stem and disk.
- Top flange according to ISO 5211.
- Blowout-proof stem.

P-T Rating



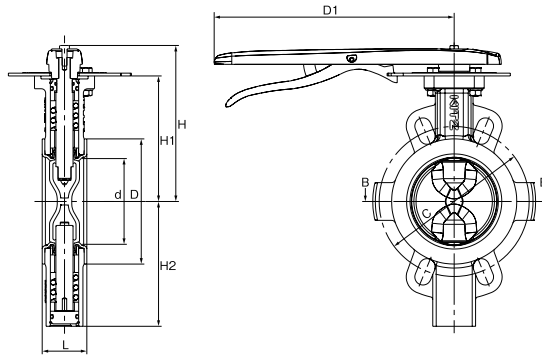
This product is designated as Strategic Materials in the Foreign Exchange and Foreign Trade Law. If you export, you need an export license based on the law. Please contact us for details.

CAUTION

- Note1: Do not damage the PFA seat when handling this product.
- Note2: Do not store the valve in the place exposed to direct sunlight.
- Note3: Installation of gaskets between the valve and flange is not required with accurate centering of each pair of upstream and downstream pipes, and with clean flanges and pipe bores that must be cleaned thoroughly to remove welding spatters, and foreign objects that may have been left inside.
- Note4: In case of necessity, use PFA solid gaskets which have a minimum of 3 mm in thickness. (Rubber materials are not allowed.)

Lever Operated

10LJF



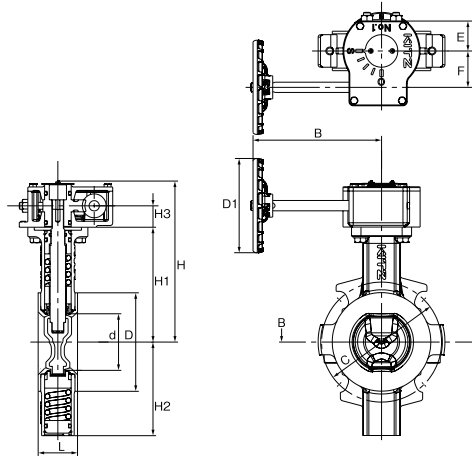
■ Dimensions

unit: mm

Size		d	H	H1	H2	L	D	C	D1
A	B								
50	2	54	155	122	102	43	90	120	230
65	2½	66	171	134	110	46	115	140	280
80	3	80	178	142	139	46	126	150	
100	4	100	182	147	146	52	146	175	350
125	5	125	217	181	178	56	181	210	
150	6	150	230	194	191	56	211	240	

Gear Operated

G-10LJF



■ Dimensions

unit: mm

Size		d	H	H1	H2	L	D	C	Gear Unit					
A	B								H3	D1	B	E	F	Size
50	2	54	175	122	102	43	90	120	25	110	150	35	42	No. FC-1
65	2½	66	188	134	110	46	115	140						
80	3	80	195	142	139	46	126	150						
100	4	100	200	147	146	52	146	175	28	170	180	42	60	No. FC-2
125	5	125	238	181	178	56	181	210						
150	6	150	253	194	191	56	211	240						
200	8	197	287	228	223	60	257	290	47	310	280	54	66	No. FC-3
250	10	246	357	272	272	68	316	355						
300	12	296	382	297	297	78	363	400						