

Serial No.	H-V015-E-8
------------	------------

Stop valve

User's Manual

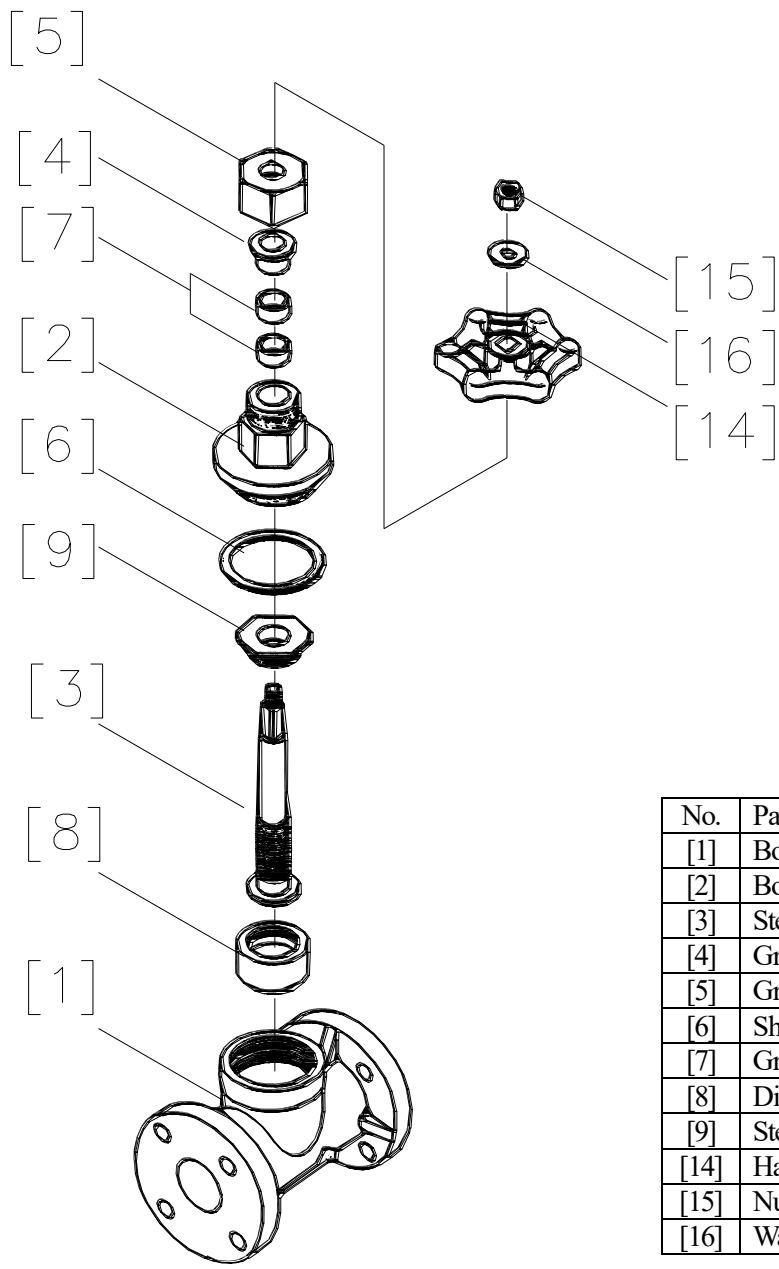
Contents

- (1) Be sure to read the following warranty clauses of our product 1
- (2) General operating instructions 2
- (3) General instructions for transportation, unpacking and storage 3
- (4) Name of parts 4
- (5) Maximum working pressure vs. temperature 6
- (6) Installation procedure 7
- (7) Operating procedure 10
- (8) Disassembly and assembly procedure for parts replacement 11
- (9) Inspection items 11
- (10) Troubleshooting 12
- (11) Handling of residual and waste materials 12



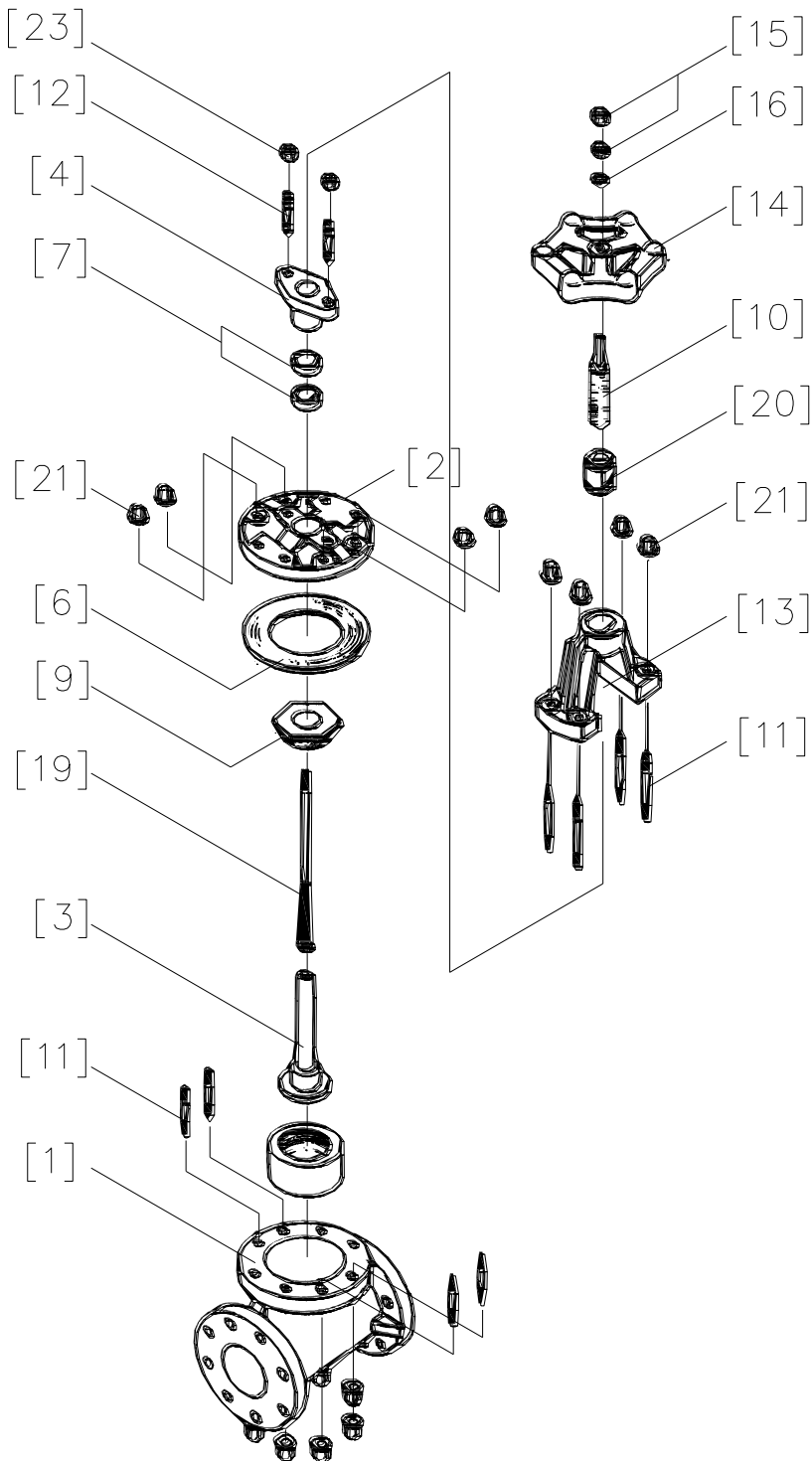
(4) Name of parts

Nominal size, 15mm~50mm (1/2"~2")



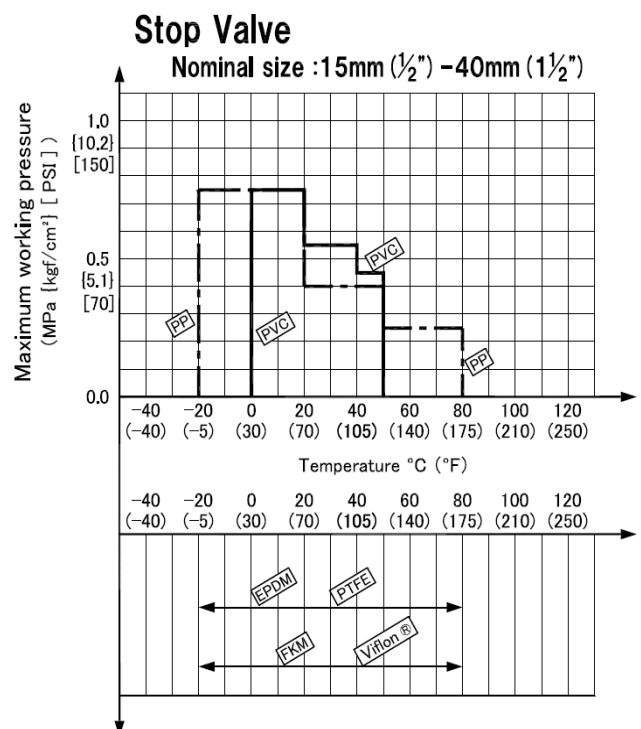
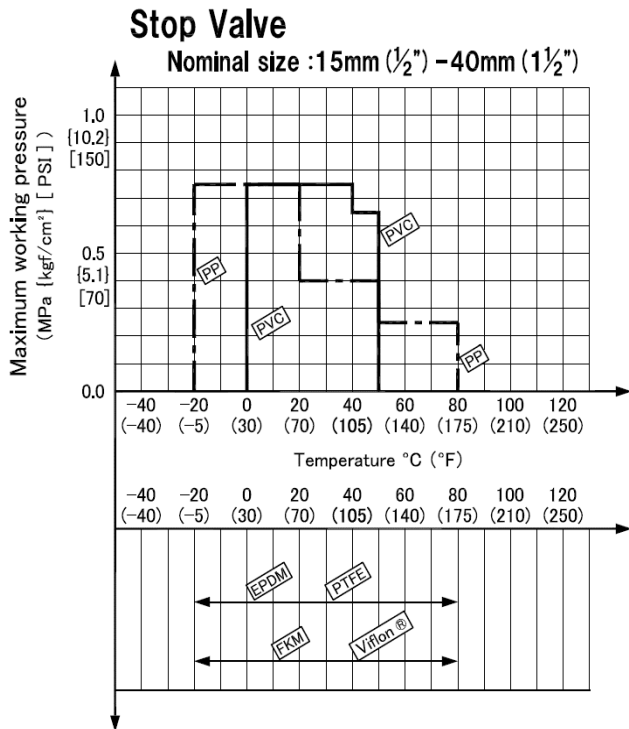
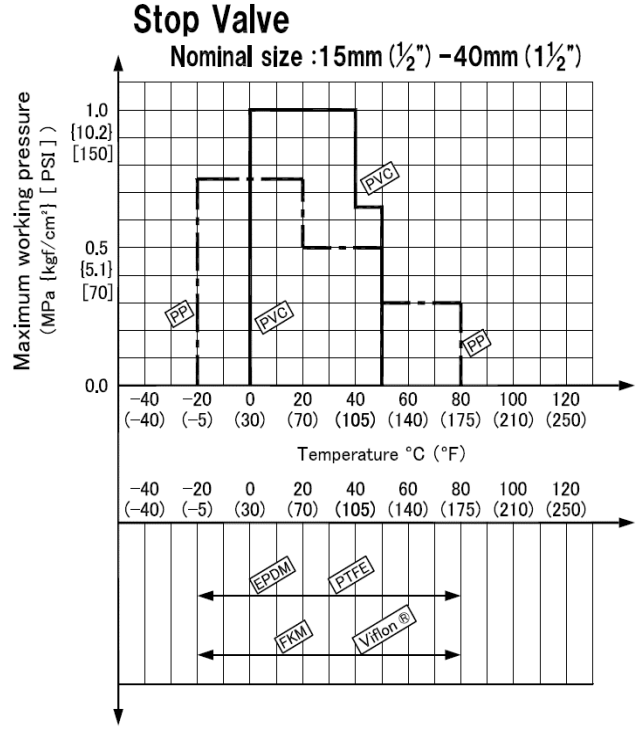
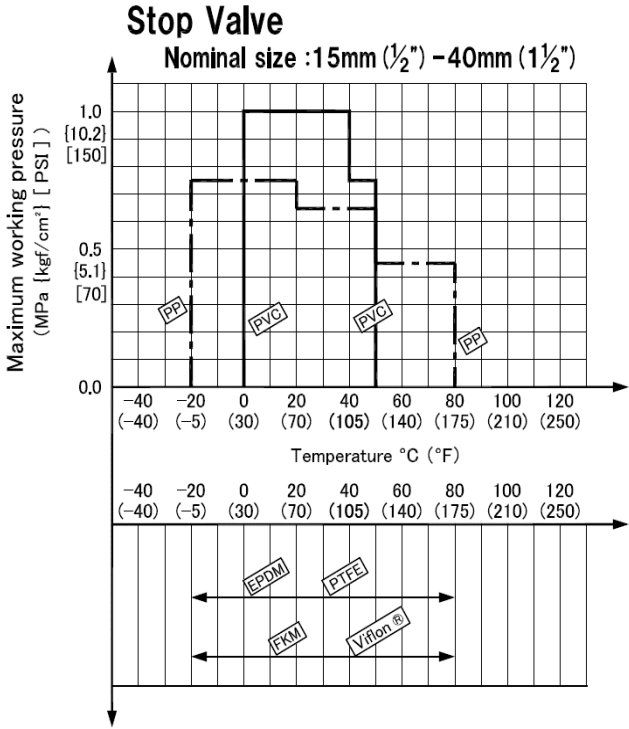
No.	Parts of name
[1]	Body
[2]	Bonnet
[3]	Stem
[4]	Grand
[5]	Grand nut
[6]	Sheet gasket
[7]	Grand packing
[8]	Disc
[9]	Stem holder
[14]	Hand wheel
[15]	Nut(A)
[16]	Washer

Nominal size, 65mm~100mm (2 1/2"~4")



No.	Parts of name
[1]	Body
[2]	Bonnet
[3]	Stem
[4]	Grand
[6]	Sheet gasket
[7]	Grand packing
[8]	Disc
[9]	Stem holder
[10]	Stem with trapezoid screw
[11][21]	Bolt•nut
[12][23]	Stud bolt•nut
[13]	Support of stem
[14]	Hand wheel
[15]	Nut(A)
[16]	Washer
[20]	Inserted metal
[23]	Lock nut



(5) Maximum working pressure vs. temperature



(10) Troubleshooting

Problem	Cause	Treatment
Fluid is leaking past the fully closed position.	Solid particles have lodged in the valve.	Clear the solid particles from the valve.
	The seat and disc are scratched.	Replace the seat and disk with new one.
The handle spins freely.	The stem is broken.	Disassemble bonnet and replace the stem.
	The stem holder is broken.	Disassemble bonnet and replace the stem.
Valve leaks between body and bonnet.	Bonnet bolts have loosened.	Re-tighten bolts & nuts.
	Media has crystallized	Disassemble and clean on a regular basis.

(11) Handling of residual and waste materials



 - Make sure to consult a waste treatment dealer for recommendations on the proper disposal of plastic valves. (Poisonous gas is generated when the valve is burned improperly.)

Stop valve

ASAHI YUKIZAI CORPORATION

Distributor

<http://www.asahi-yukizai.co.jp/en/>