

Serial No.

H-V001-E-8

Diaphragm Valve Type 72

User's Manual

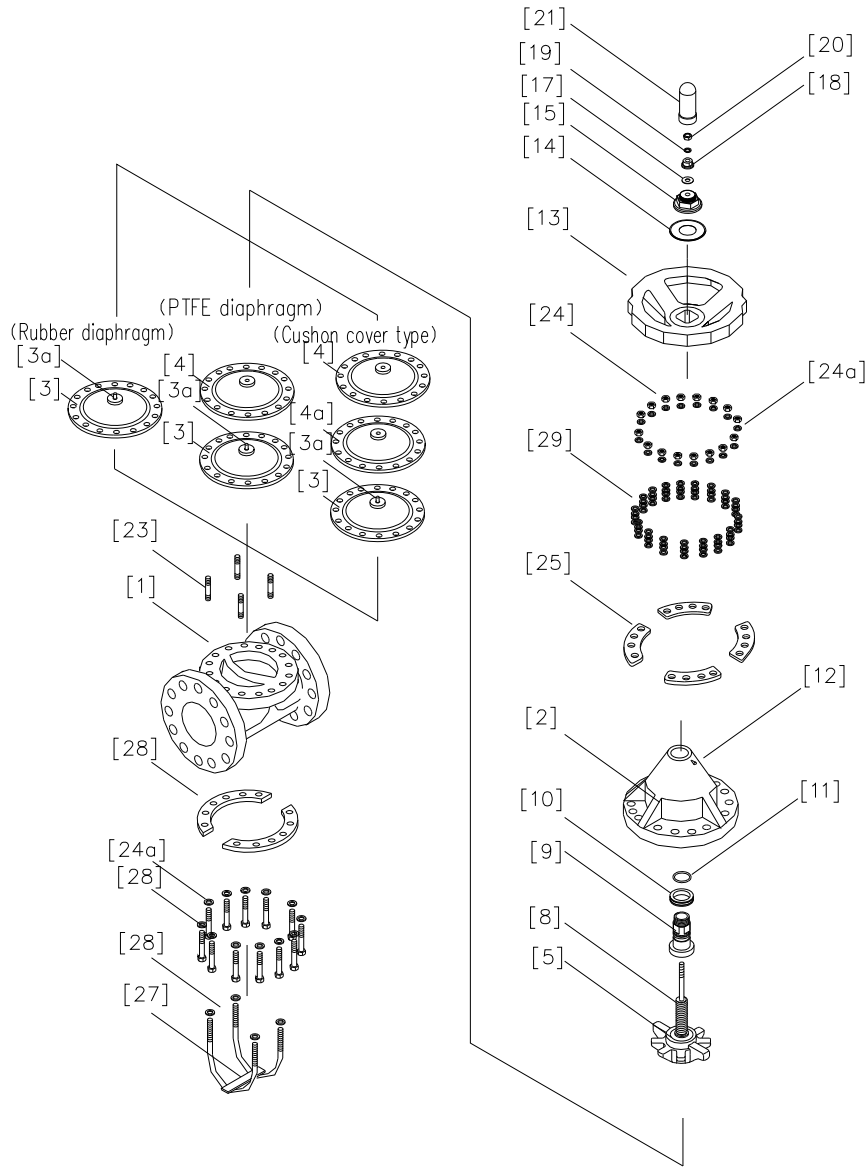
Contents

(1) Be sure to read the following warranty clauses of our product	1
(2) General operating instructions	2
(3) General instructions for transportation, unpacking and storage	3
(4) Name of parts	4
(5) Working pressure vs. temperature	6
(6) Specification of limit switch procedure	10
(7) Installation procedure	10
(8) Connection of limit switch procedure	11
(9) Operating procedure	12
(10) Adjustment procedure for stopper	13
(11) Disassembling method for replacing parts	13
(12) Inspection items	14
(13) Troubleshooting	15
(14) Handling of residual and waste materials	15

**ASAHI YUKIZAI CORPORATION**

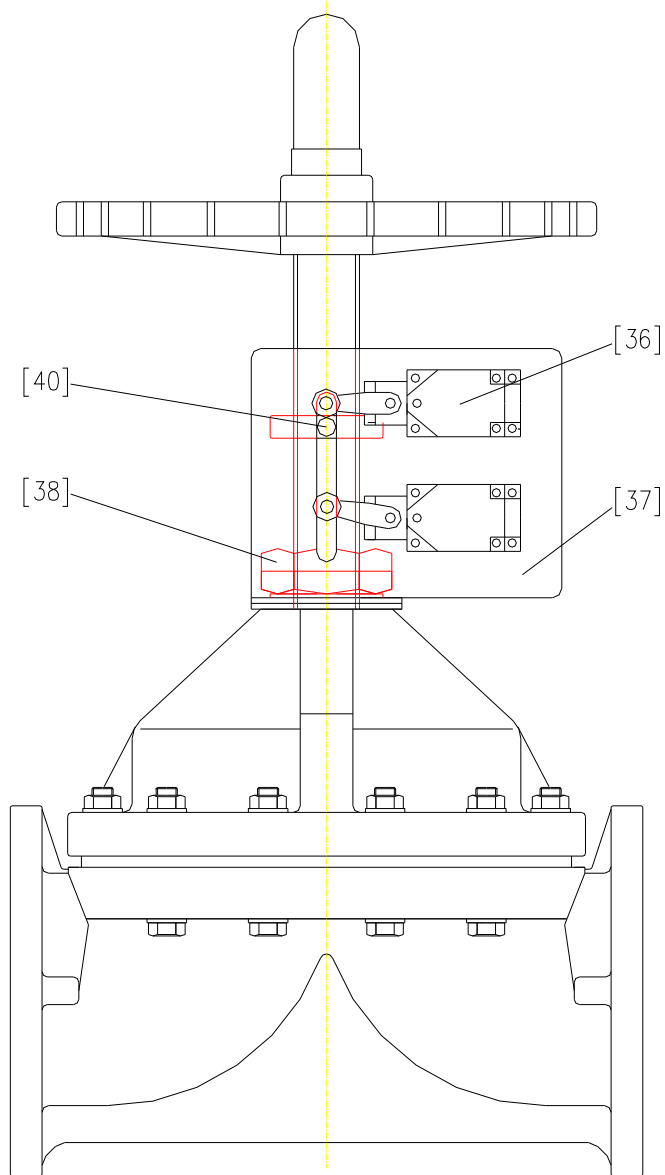
(4) Name of parts

Nominal Size: 200, 250mm (8", 10")



Nominal size 200, 250mm					
No.	DESCRIPTION	No.	DESCRIPTION	No.	DESCRIPTION
[1]	Body	[11]	O-ring(A)	[23]	Stud bolt-nut
[2]	Bonnet	[12]	Grease nipple	[24]	Bolt-nut
[3]	Diaphragm	[13]	Handle	[24a]	Washer
[3a]	Inserted metal of diaphragm(A)	[14]	Name plate	[25]	Bonnet upper liner
[4]	Cushion	[15]	Cap	[26]	Body liner
[4a]	Cushion cover	[17]	Valve sheet	[27]	Rib liner
[5]	Compressor	[18]	Stopper	[28]	U-bolt-nut
[8]	Stem	[19]	Spring washer	[29]	Conical spring washer
[9]	Sleeve(A)	[20]	Set nut		
[10]	Thrust bearing(A)	[21]	Gauge cover		

Nominal Size: 200, 250mm (8", 10") with Limit Switch (Option)

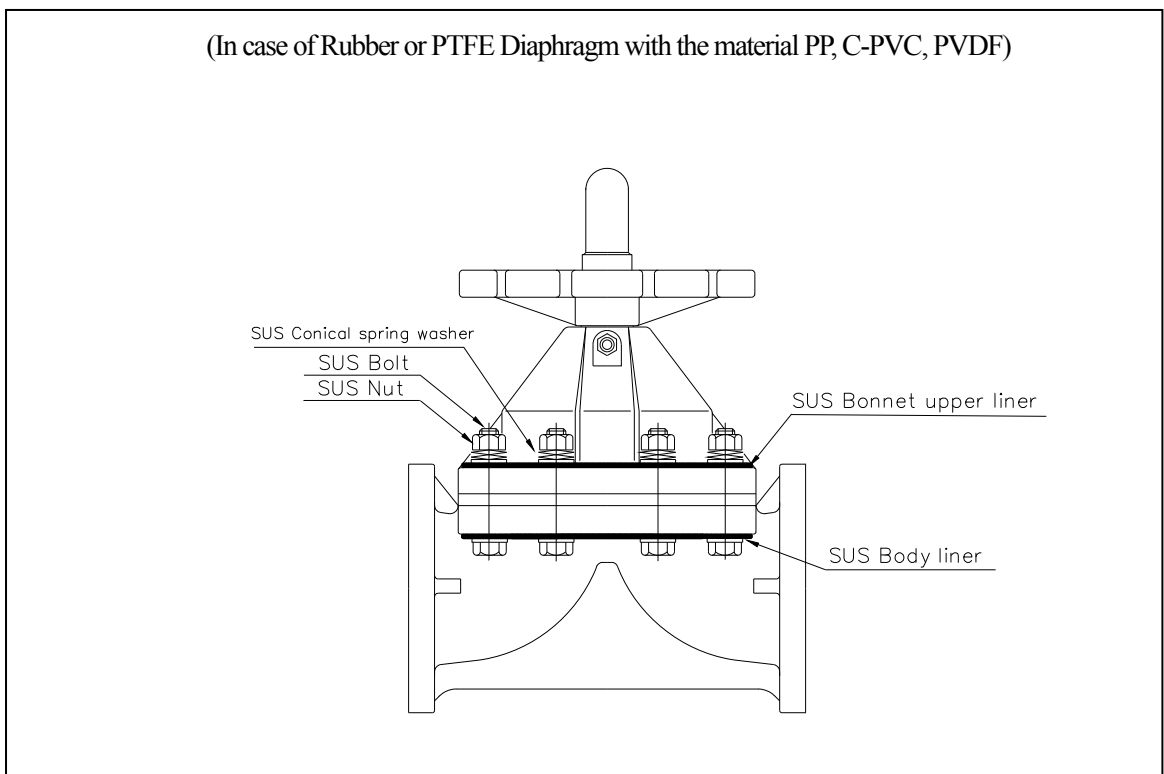
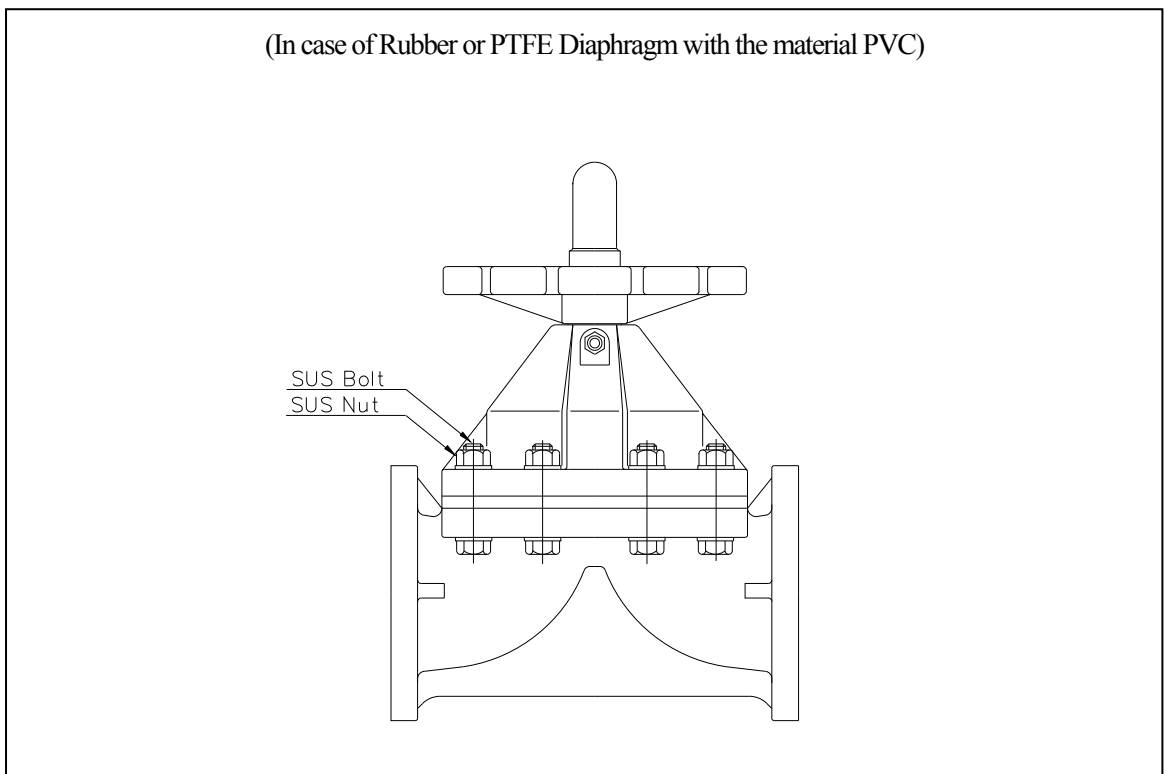


(In case of body material PVC)

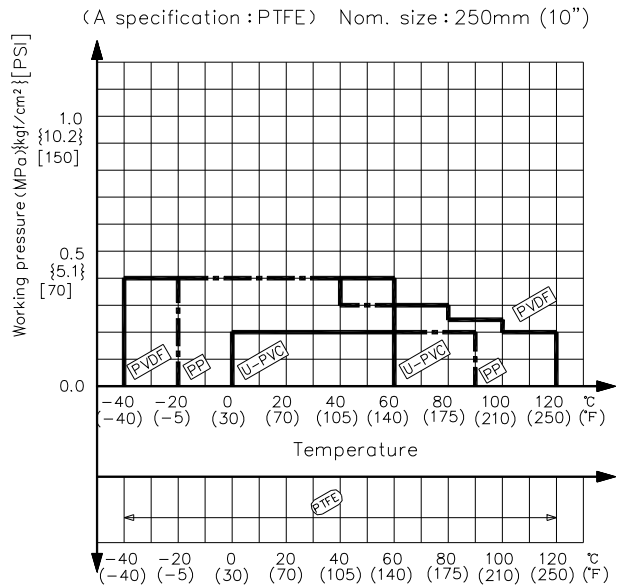
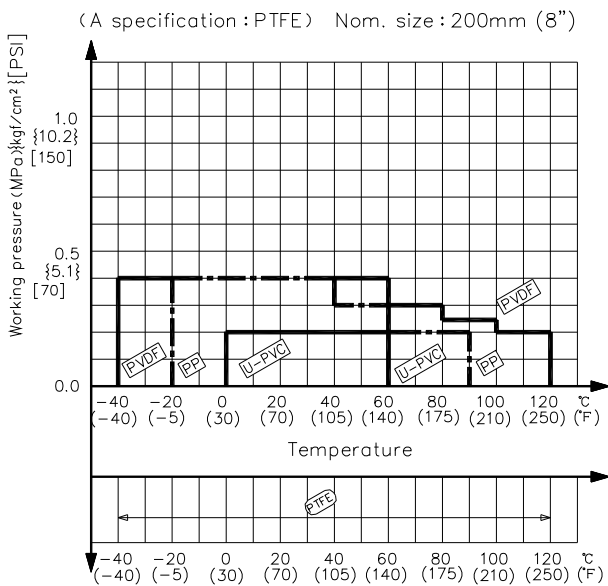
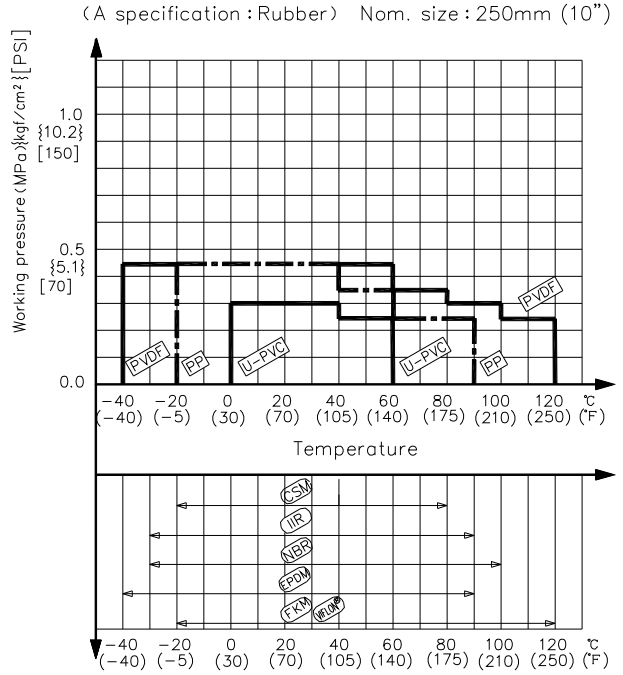
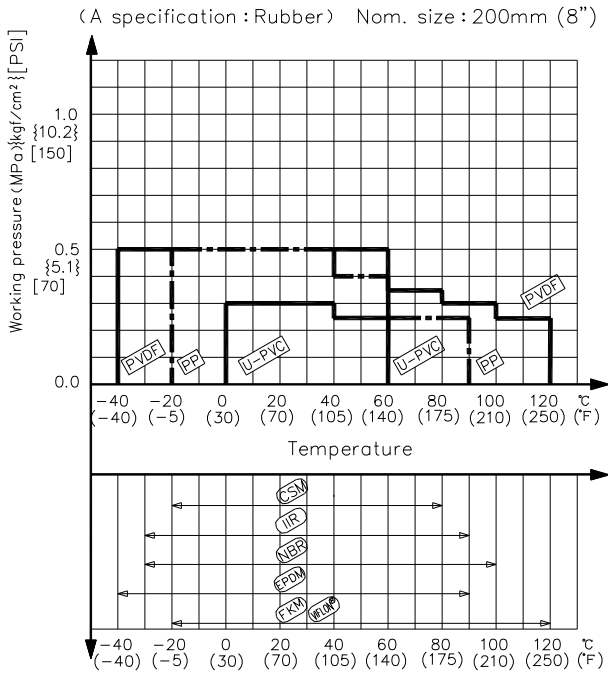
No.	DESCRIPTION	No.	DESCRIPTION
[36]	Limit Switch	[38]	Nut (A)
[37]	Bracket (A)	[40]	Limit Switch Rod

(5) Working pressure vs. temperature

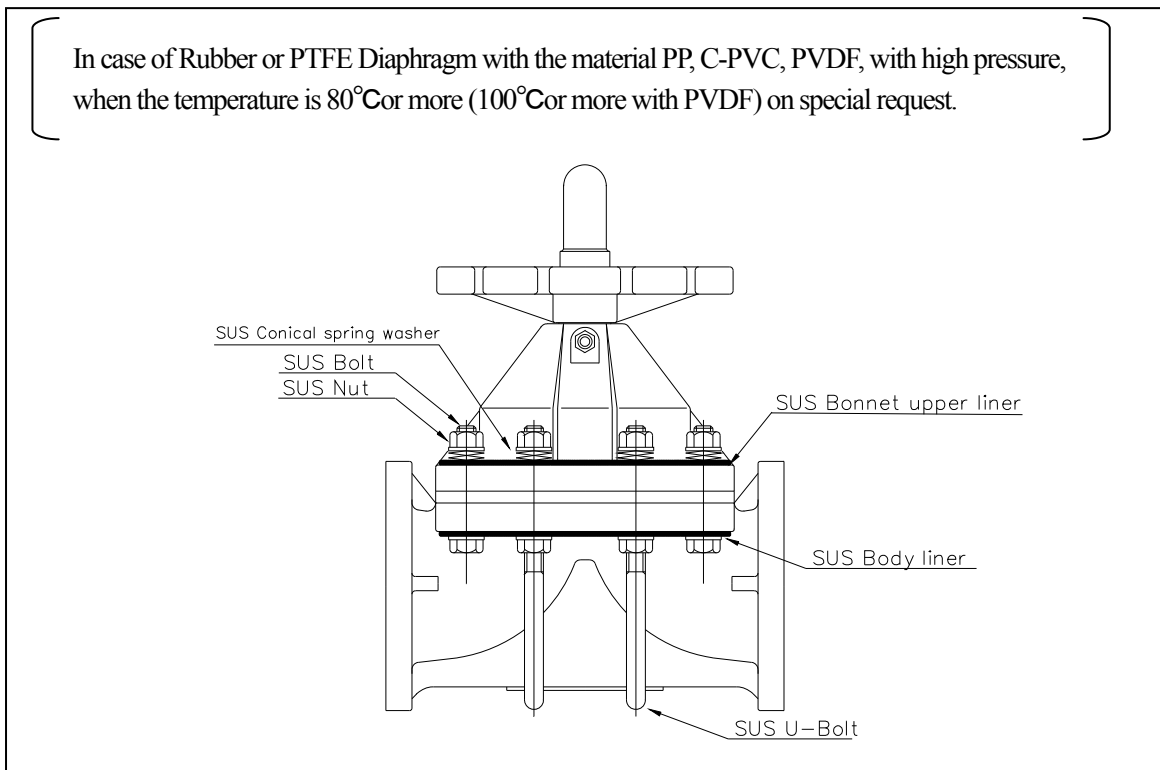
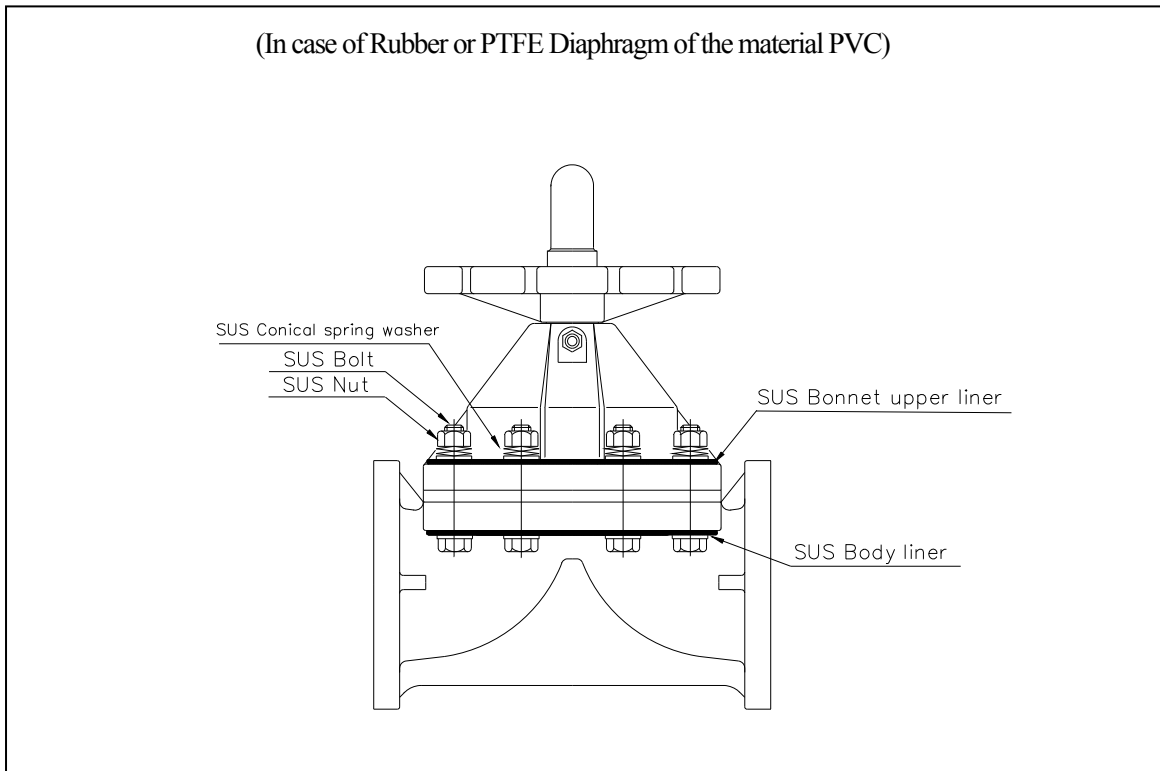
(1) AV Diaphragm Type 72 Specification of the connection (A specification)



*SUS Conical spring washer is only used with PVDF.



(1) AV Diaphragm Type 72 Specification of the connection (B specification)



*SUS Conical spring washer is only used with PVDF.

Diaphragm Valve Type 72

ASAHI YUKIZAI CORPORATION



Distributor

<http://www.asahi-yukizai.co.jp/en/>

Information in this manual is subject to change without notice

2016.4