

Serial No.

H-V013-E-14

Swing Check Valve

User's Manual

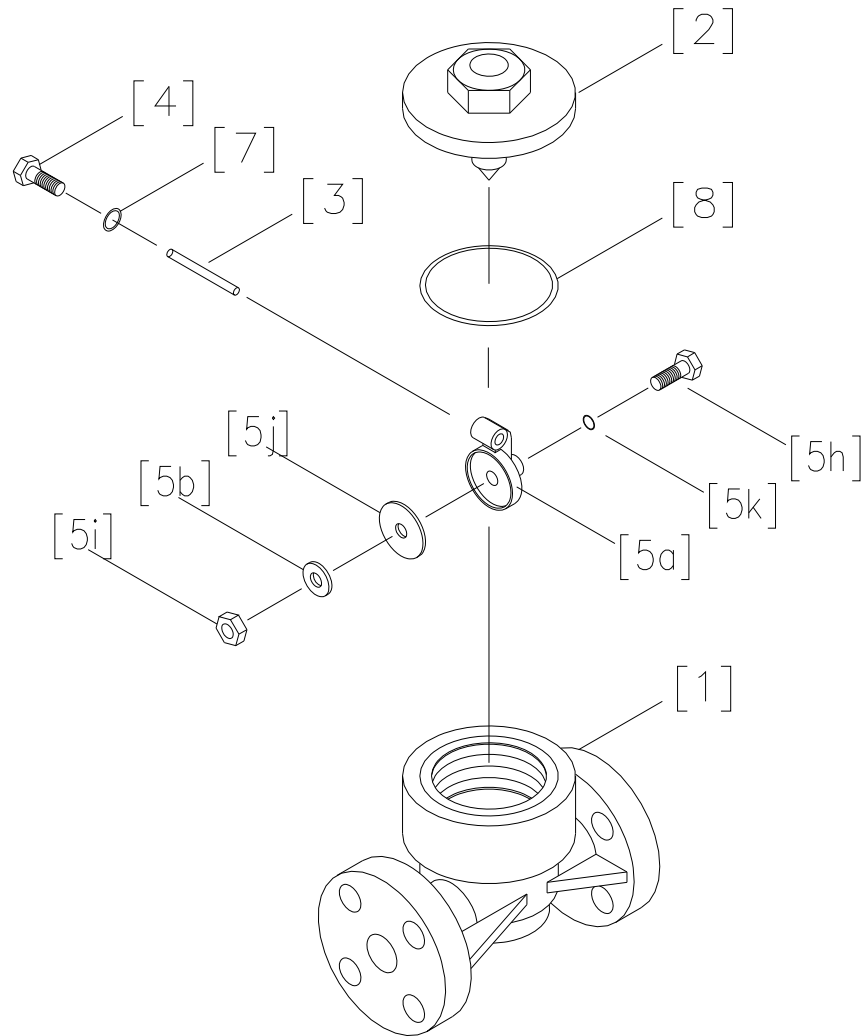


Contents

- (1) Be sure to read the following warranty clauses of our product1
- (2) General operating instructions2
- (3) General instructions for transportation, unpacking and storage3
- (4) Name of parts4
- (5) Working pressure vs. temperature6
- (6) Seal performance7
- (7) Installation procedure7
- (8) Disassembling method for replacing parts9
- (9) Inspection items11
- (10) Troubleshooting11
- (11) Handling of residual and waste materials11

(4) Name of parts

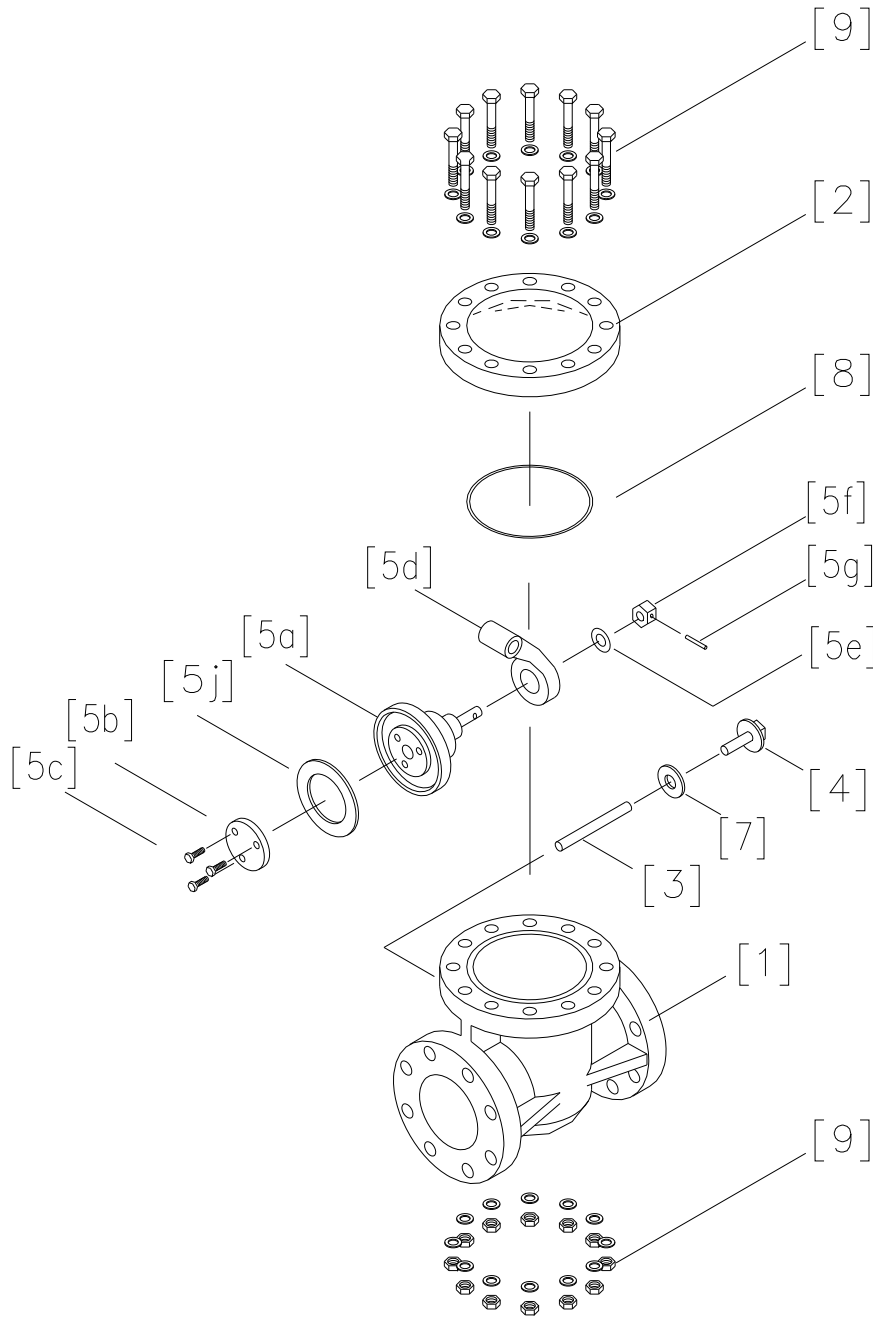
Nominal size 15, 20mm (1/2", 3/4")



No.	DESCRIPTION	No.	DESCRIPTION	No.	DESCRIPTION	
[1]	Body	[5]	[5a]	[5]	[5j]	Seat
[2]	Bonnet		[5b]	[5]	[5k]	O-ring (A)
[3]	Shaft		[5h]	[7]		Gasket (B)
[4]	Plug		[5i]	[8]		O-ring (B)

*The assembly of Disc ([5a]-[5k]) is not disassembly.

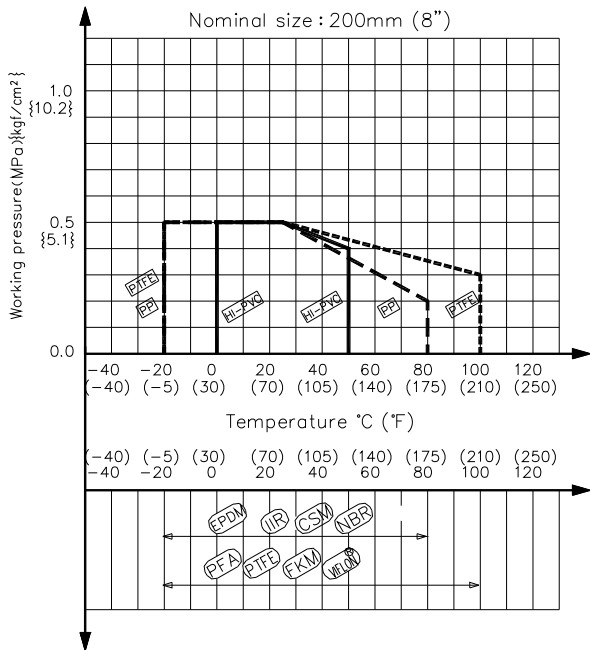
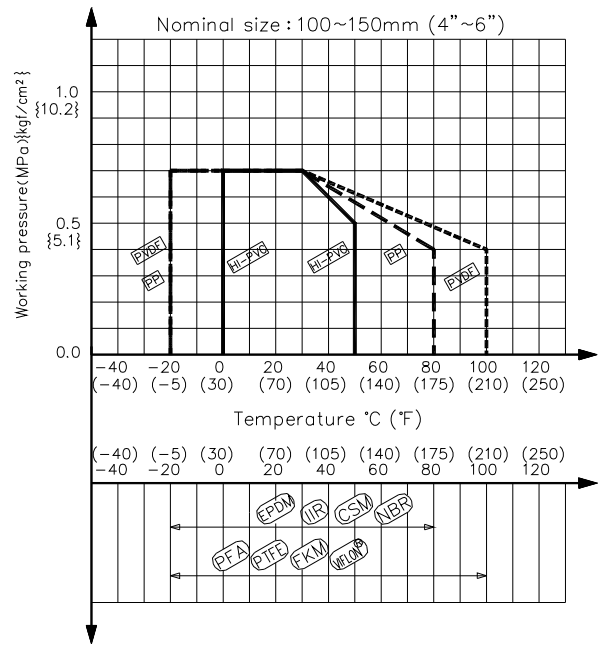
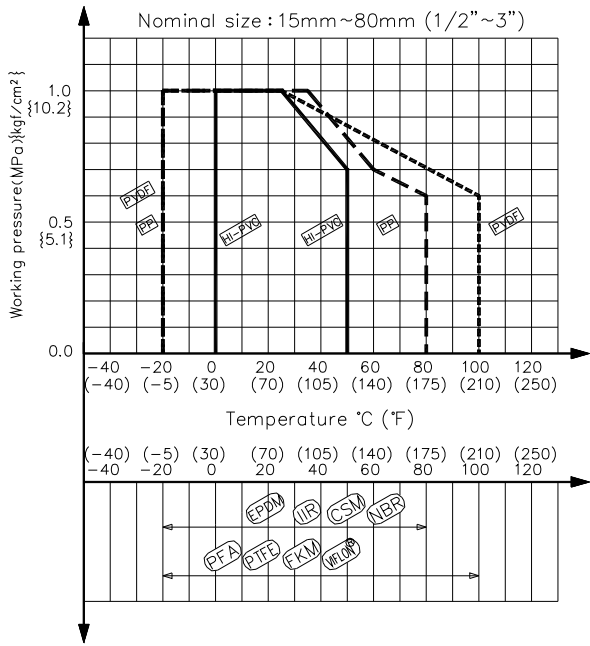
Nominal size 25-200mm (1"-8")



No.	DESCRIPTION	No.	DESCRIPTION	No.	DESCRIPTION
[1]	Body	[5b]	Seat holder	[5]	[5g] Pin
[2]	Bonnet	[5c]	Bolt (A)	[5]	[5j] Seat
[3]	Shaft	[5d]	Arm	[7]	Gasket (B)
[4]	Plug	[5e]	Washer	[8]	O-ring (B)
[5]	[5a] Disc	[5f]	Nut (A)	[9]	Bolt • Nut

*The assembly of Disc ([5a]-[5j]) is not disassembly.

(5) Working pressure vs. temperature



(6) Seal performance (Water Pressure: at R. T.)

Unit: MPa {kgf/cm²}

Nominal Size		Seat	Vertical Piping		Horizontal Piping	
mm	inch		Shut the Disc	Pass the Water	Shut the Disc	Pass the Water
15	1/2	EPDM, others	0.02 {0.2}	0.01 {0.1}	0.02 {0.2}	0.01 {0.1}
		PTFE	0.03 {0.3}	0.01 {0.1}	0.03 {0.3}	0.01 {0.1}
20	3/4	EPDM, others	0.02 {0.2}	0.01 {0.1}	0.02 {0.2}	0.01 {0.1}
		PTFE	0.035 {0.35}	0.01 {0.1}	0.035 {0.35}	0.01 {0.1}
25	1	EPDM, others	0.03 {0.3}	0.01 {0.1}	0.035 {0.35}	0.01 {0.1}
		PTFE	0.05 {0.5}	0.01 {0.1}	0.06 {0.6}	0.01 {0.1}
40	1 1/2	EPDM, others	0.03 {0.3}	0.01 {0.1}	0.035 {0.35}	0.01 {0.1}
		PTFE	0.05 {0.5}	0.01 {0.1}	0.06 {0.6}	0.01 {0.1}
50	2	EPDM, others	0.03 {0.3}	0.01 {0.1}	0.035 {0.35}	0.01 {0.1}
		PTFE	0.05 {0.5}	0.01 {0.1}	0.06 {0.6}	0.01 {0.1}
65	2 1/2	EPDM, others	0.03 {0.3}	0.01 {0.1}	0.035 {0.35}	0.01 {0.1}
		PTFE	0.05 {0.5}	0.01 {0.1}	0.06 {0.6}	0.01 {0.1}
80	3	EPDM, others	0.035 {0.35}	0.01 {0.1}	0.04 {0.4}	0.01 {0.1}
		PTFE	0.055 {0.55}	0.01 {0.1}	0.06 {0.6}	0.01 {0.1}
100	4	EPDM, others	0.035 {0.35}	0.01 {0.1}	0.04 {0.4}	0.01 {0.1}
		PTFE	0.06 {0.6}	0.01 {0.1}	0.065 {0.65}	0.01 {0.1}
125	5	EPDM, others	0.035 {0.35}	0.01 {0.1}	0.04 {0.4}	0.01 {0.1}
		PTFE	0.06 {0.6}	0.01 {0.1}	0.065 {0.65}	0.01 {0.1}
150	6	EPDM, others	0.04 {0.4}	0.015 {0.15}	0.045 {0.45}	0.01 {0.1}
		PTFE	0.065 {0.65}	0.015 {0.15}	0.07 {0.7}	0.01 {0.1}
200	8	EPDM, others	0.04 {0.4}	0.02 {0.2}	0.045 {0.45}	0.015 {0.15}
		PTFE	0.07 {0.7}	0.02 {0.2}	0.07 {0.7}	0.015 {0.15}

*Data mentioned in the table above is reference only.

(7) Installation procedure

Warning

- ⚠️ - When suspending and supporting a valve, take care and do not stand under a suspended valve.
- ⚠️ - Be sure to conduct a safety check on all hand and power tools to be used before beginning work.
- ⚠️ - Wear protective gloves and safety goggles as fluid remain in the valve even if the pipeline is empty. (You may be injured.)

Caution

- ⚠️ - When installing a pipe support by means of a U-band or something similar, take care not to over-tighten. (Excessive force may damage the pipe.)
- ⚠️ - When installing pipes and valves, ensure that they are not subjected to tension, compression, bending, impact, or other excessive stress.
- The valve is applicable to both types: vertical and horizontal piping. In the case of vertical piping, use the valve in applications where the fluid travels upwards.
- Install the piping while matching the arrow on the valve body with the flow direction of the fluid.

Horizontal Piping Vertical Piping

← Dilection of Flow →

Swing check valve**ASAHI YUKIZAI CORPORATION****Distributor**<http://www.asahi-yukizai.co.jp/en/>