

Serial No.	H-V036-E-18
------------	-------------

Butterfly Valve Type 57

Lever Type: 40-200 mm (1 1/2"-8")
 Body Material: PVC, PP, PVDF

Gear Type: 40-350mm (1 1/2"-14")
 Body Material: PVC, PP, PVDF

User's Manual



Contents

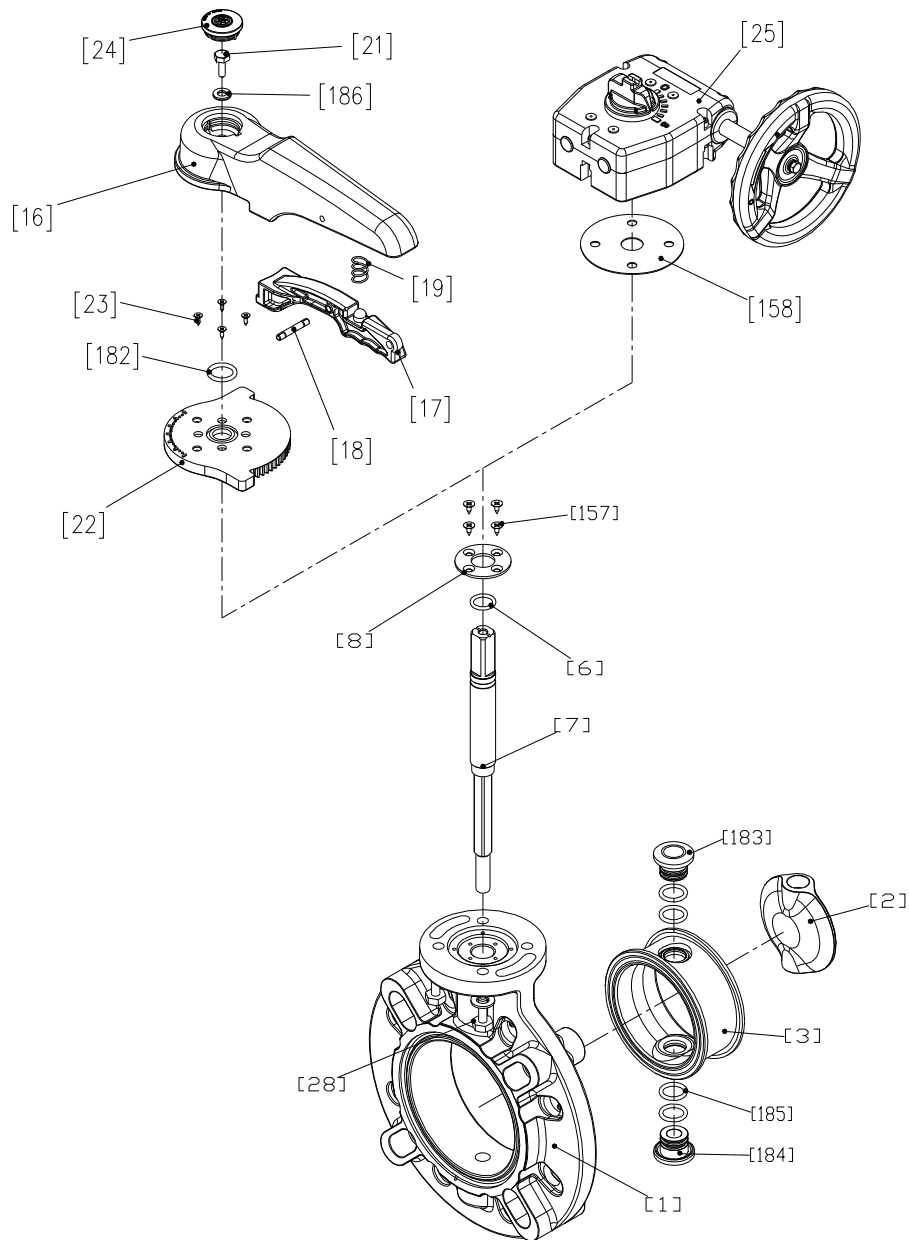
(1) Be sure to read the following warranty clauses of our product	1
(2) General operating instructions	2
(3) General instructions for transportation, unpacking and storage	3
(4) Names of parts	4
(5) Working pressure vs. temperature	8
(6) Specification of limit switch	9
(7) Installation procedure	10
(8) Connection of limit switch procedure	14
(9) Operating procedure	15
(10) Disassembly and assembly procedure for parts replacement	17
(11) Installation procedure for handle	19
(12) Adjustment procedure for adjuster on gear type	20
(13) Inspection items	20
(14) Troubleshooting	21
(15) Handling of residual and waste materials	21

ASAHI YUKIZAI CORPORATION

(4) Names of parts

Type 57 (Lever / Gear Type): 40-350mm (1 1/2"-14")

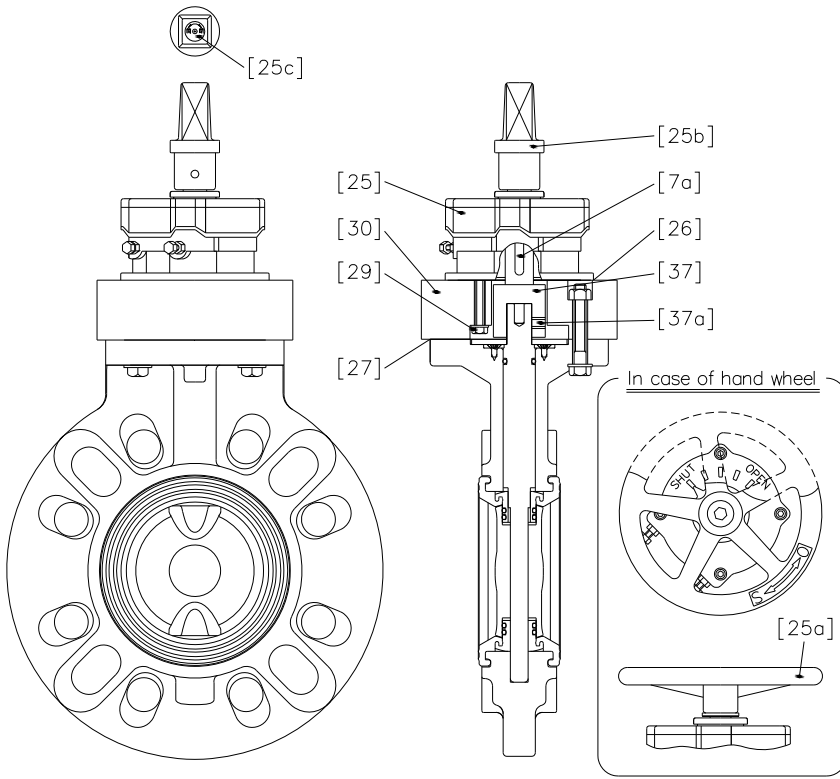
Body Material: PVC, PP, PVDF



No.	Description	No.	Description	No.	Description
[1]	Body	[18]	Pin	[157]	Screw (F)
[2]	Disc	[19]	Spring	[158]	Gasket (L)
[3]	Seat	[21]	Bolt (A)	[182]	O-Ring (H)
[6]	O-Ring (C)	[22]	Locking Plate	[183]	Seat Bush (A)
[7]	Stem	[23]	Screw (B)	[184]	Seat Bush (B)
[8]	Stem Holder (A)	[24]	Cap (A)	[185]	O-Ring (I)
[16]	Handle (A)	[25]	Gear Box	[186]	Rubber + Washer
[17]	Handle Lever	[28]	Bolt (C)		

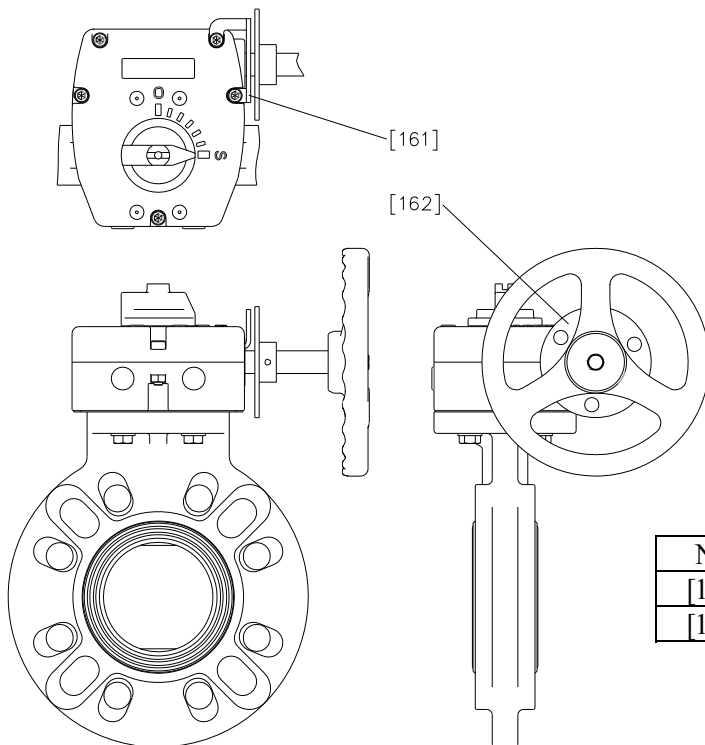
Type 57 (Top Gear Type): 40-350mm (1 1/2"-14")

Body Material: PVC, PP, PVDF



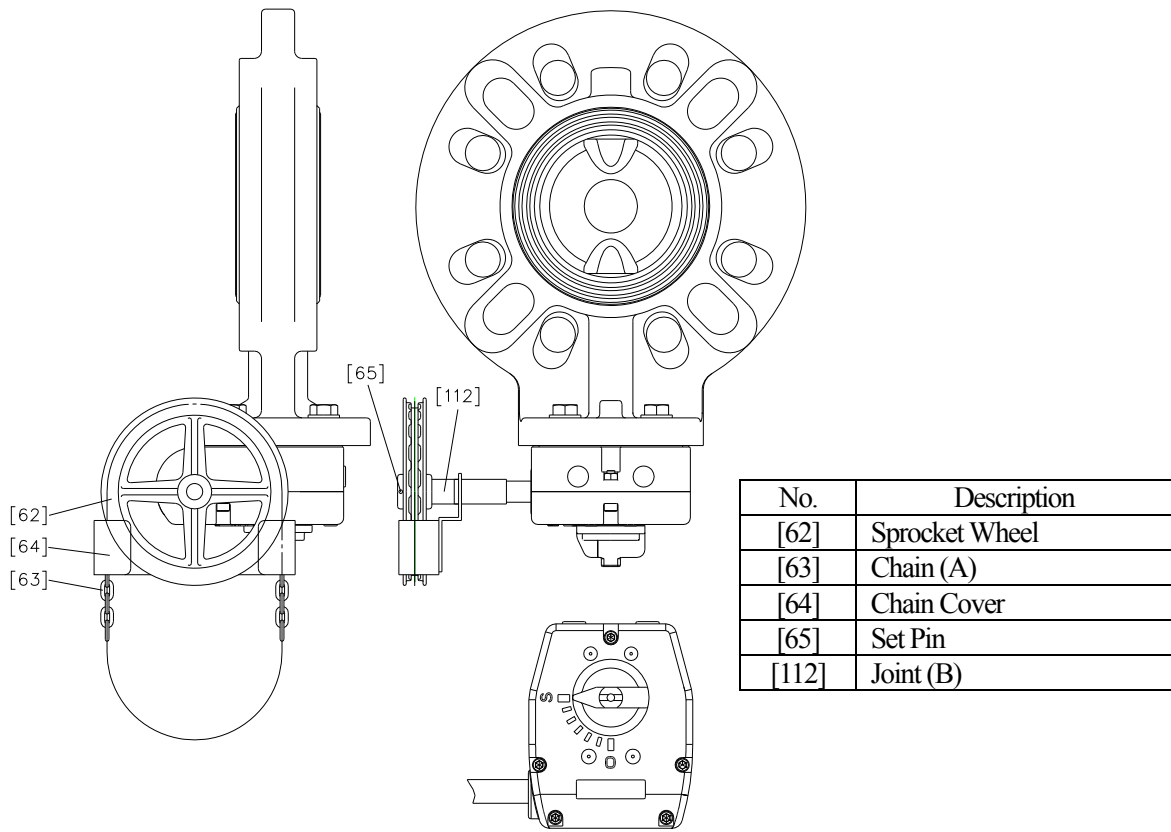
No.	Description
[7a]	Key (A)
[25]	Gear Box
[25a]	Hand Wheel
[25b]	Cap (B)
[25c]	Indicator Board
[26]	Gasket (A)
[27]	Gasket (B)
[29]	Bolt (D)
[30]	Stand
[37]	Joint (A)
[37a]	Screw (C)

Type 57 (Gear Type): 40-350mm (1 1/2"-14") with Handle Lock (Option)

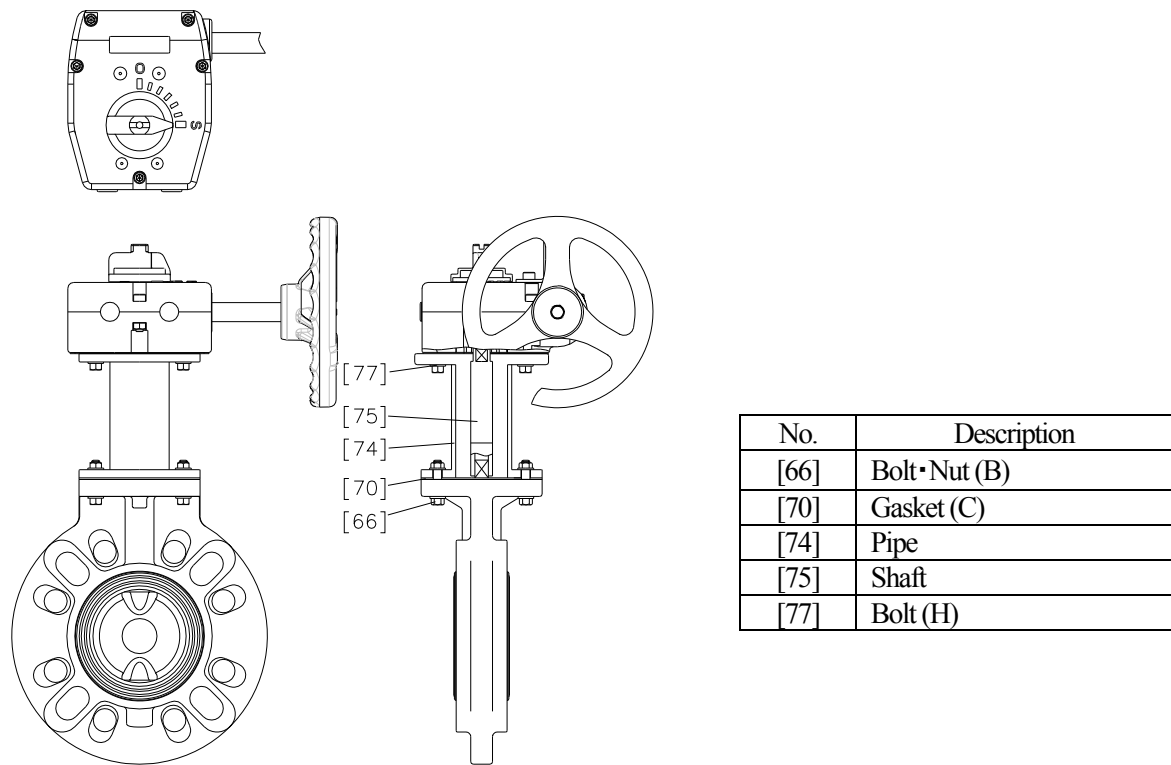


No.	Description
[161]	Lock Plate (A)
[162]	Lock Plate (B)

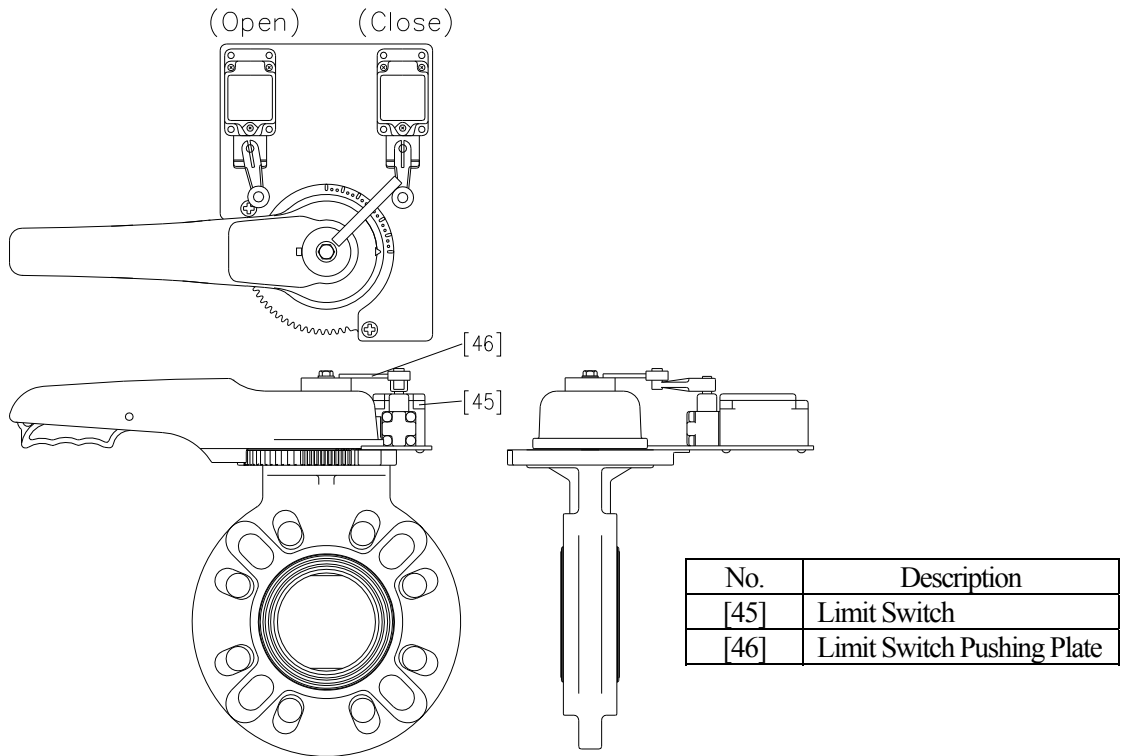
Type 57 (Chain Type): 40-350mm (1 1/2"-14") (Option)



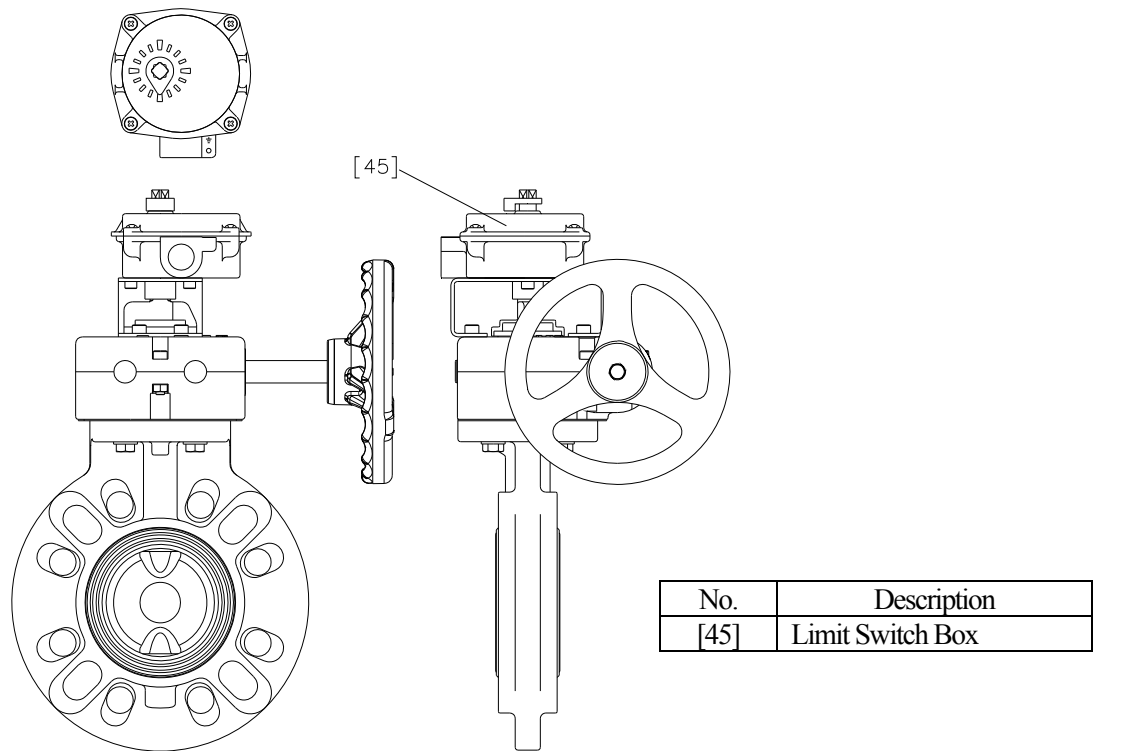
Type 57 (Long Stem Type): 40-350mm (1 1/2"-14") (Option)



Type 57 (Lever Type): 40-350mm (1 1/2"-14") with Limit Switch (1LS1-J) (Option)

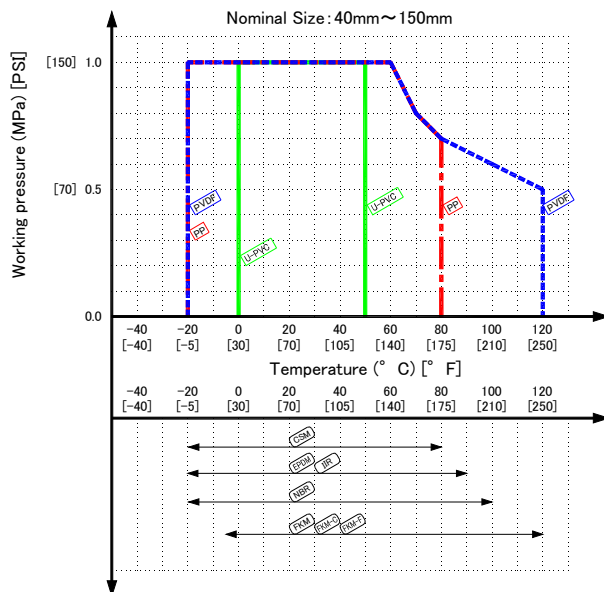


Type 57 (Gear Type): 40-350mm (1 1/2"-14") with Limit Switch Box (TA2-SB2/ TA-200-SB2) (Option)

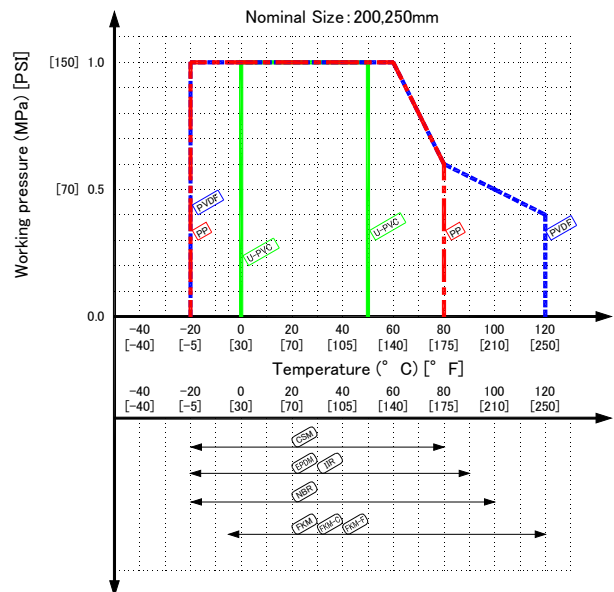


(5) Working pressure vs. temperature

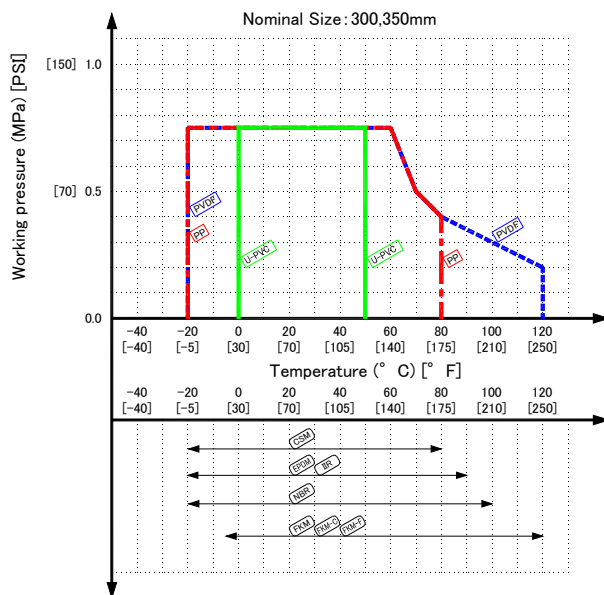
BUTTERFLY VALVE TYPE57



BUTTERFLY VALVE TYPE57



BUTTERFLY VALVE TYPE57



Butterfly Valve

Type 57: 40-350mm (1 1/2"-14")

ASAHI YUKIZAI CORPORATION



Distributor

<http://www.asahi-yukizai.co.jp/en/>