

Serial No.	H-V029-E-16
------------	-------------

Butterfly Valves Type 55 • Type 55IS

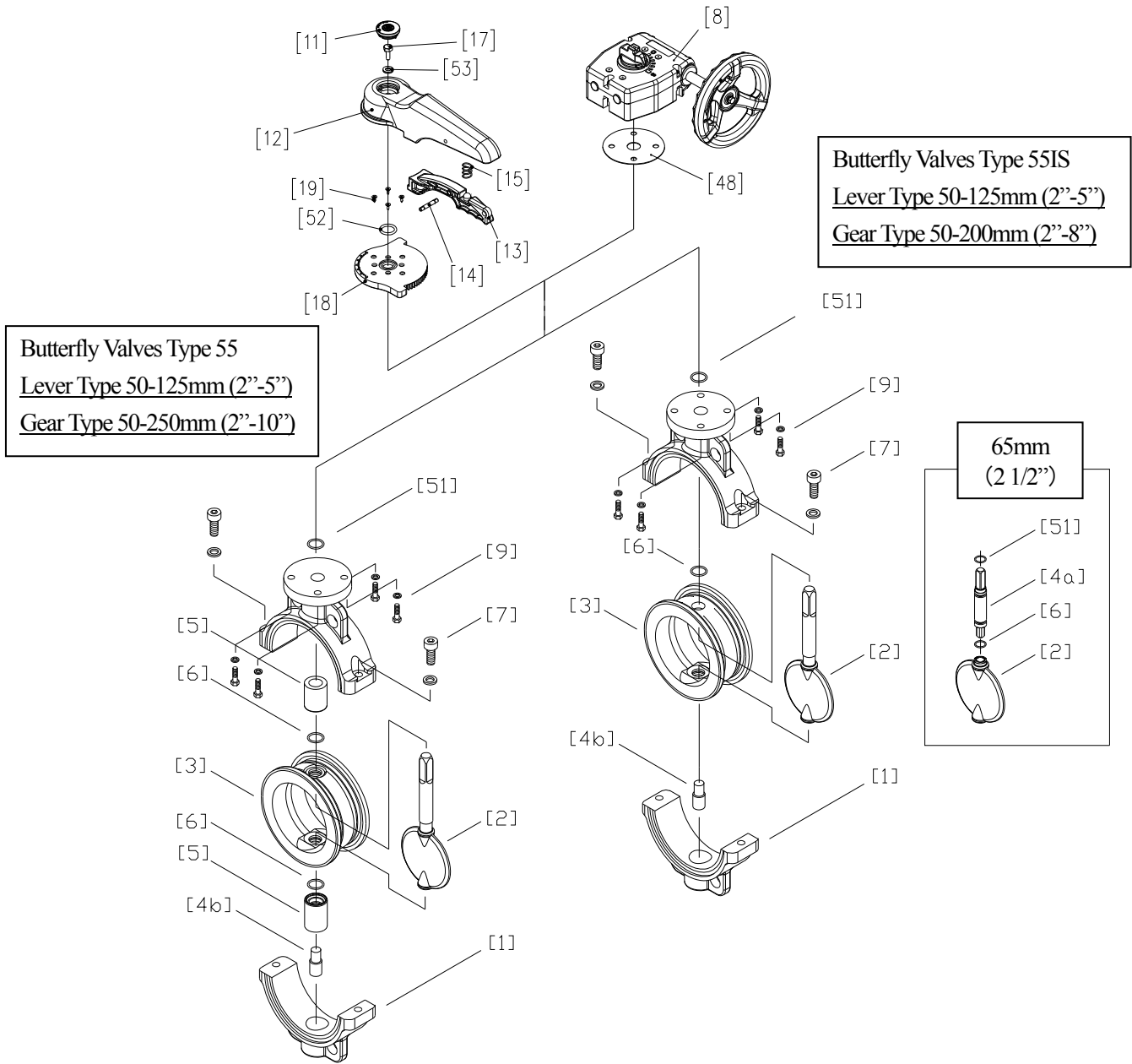
User's Manual

Contents

(1) Be sure to read the following warranty clauses of our product	1
(2) General operating instructions	2
(3) General instructions for transportation, unpacking and storage	3
(4) Name of parts	4
(5) Working pressure vs. temperature	8
(6) Specification of limit switch	8
(7) Installation procedure	9
(8) Connection of limit switch procedure	12
(9) Operating procedure	13
(10) Disassembly and assembly procedure	14
(11) Adjustment procedure for stopper on gear type	15
(12) Inspection items	15
(13) Troubleshooting	16
(14) Handling of residual and waste materials	16



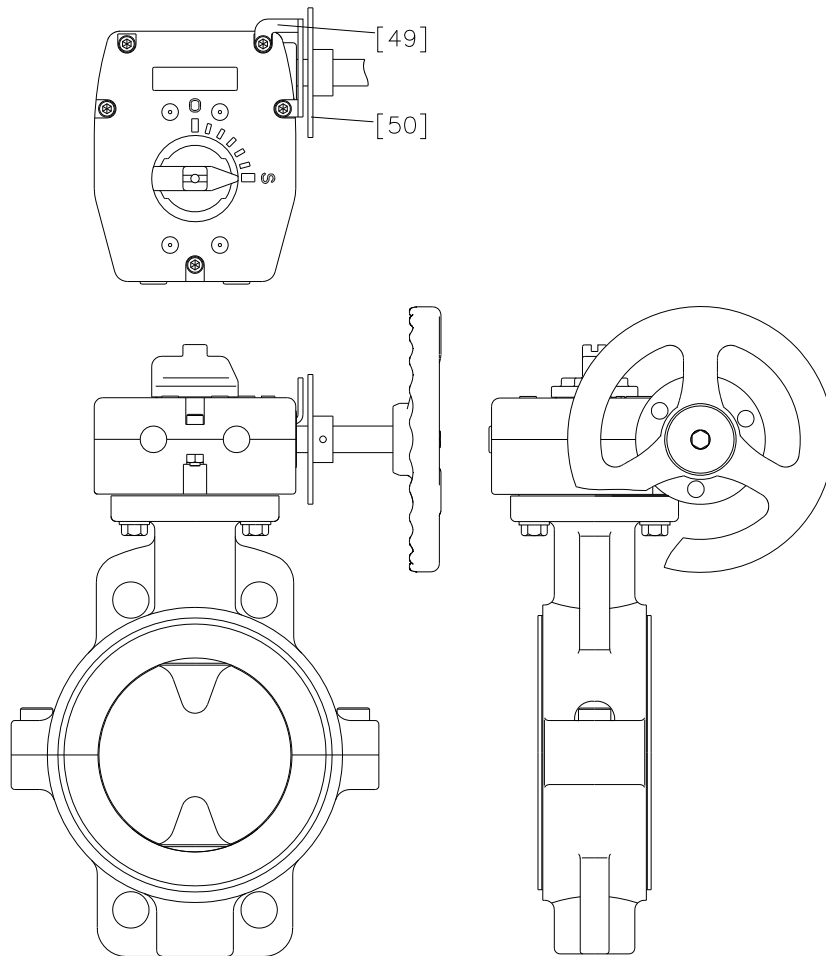
(4) Name of parts



No.	DESCRIPTION	No.	DESCRIPTION	No.	DESCRIPTION
[1]	Body	[8]	Gear Box	[18]	Locking plate
[2]	Disc	[9]	Bolt (B)	[19]	Screw
[3]	Seat	[11]	Cap	[48]	Gasket (C)
[4a]	Stem (A)	[12]	Handle	[51]	O-ring (B)
[4b]	Stem (B)	[13]	Handle lever	[52]	O-ring (C)
[5]	Bush	[14]	Pin	[53]	Rubber + Washer
[6]	O-ring (A)	[15]	Spring		
[7]	Bolt (A)	[17]	Bolt (C)		

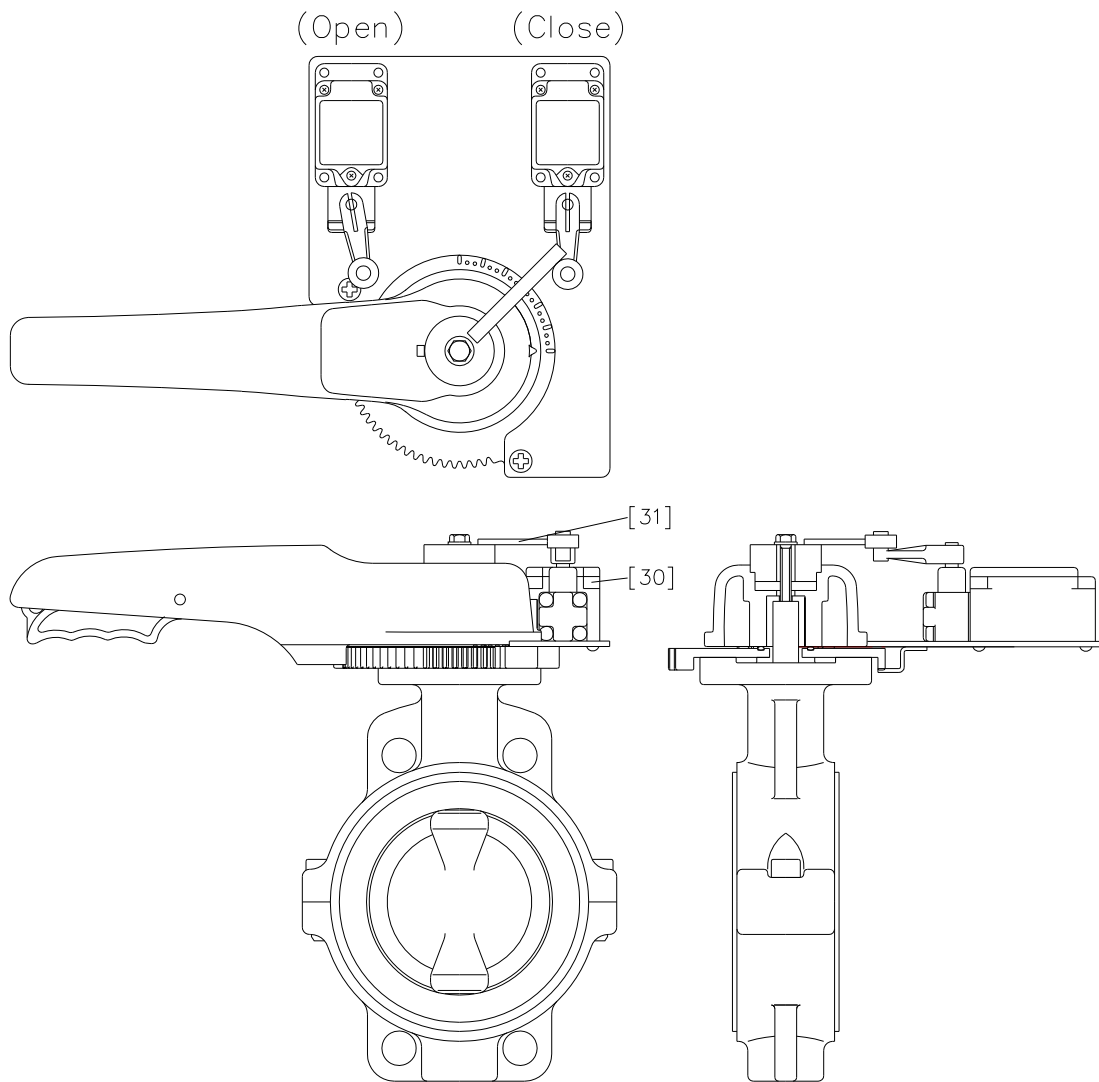
Type55 : Gear Type 50-250mm (2"-10") with Handle Lock (Option)

Type55IS : Gear Type 50-200mm (2"-8") with Handle Lock (Option)



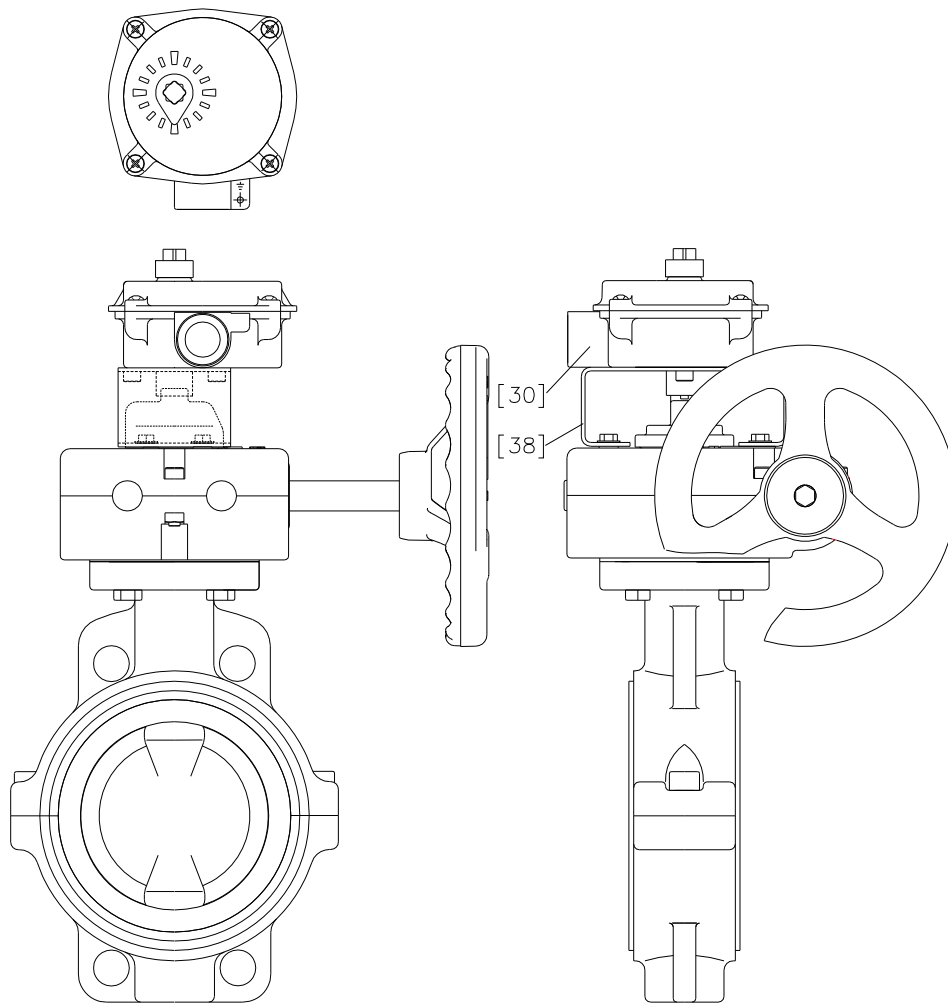
No.	DESCRIPTION
[49]	Lock Plate (A)
[50]	Lock Plate (B)

Lever Type 50-125mm (2"-5") with Limit Switch (1LS1-J) (Option)



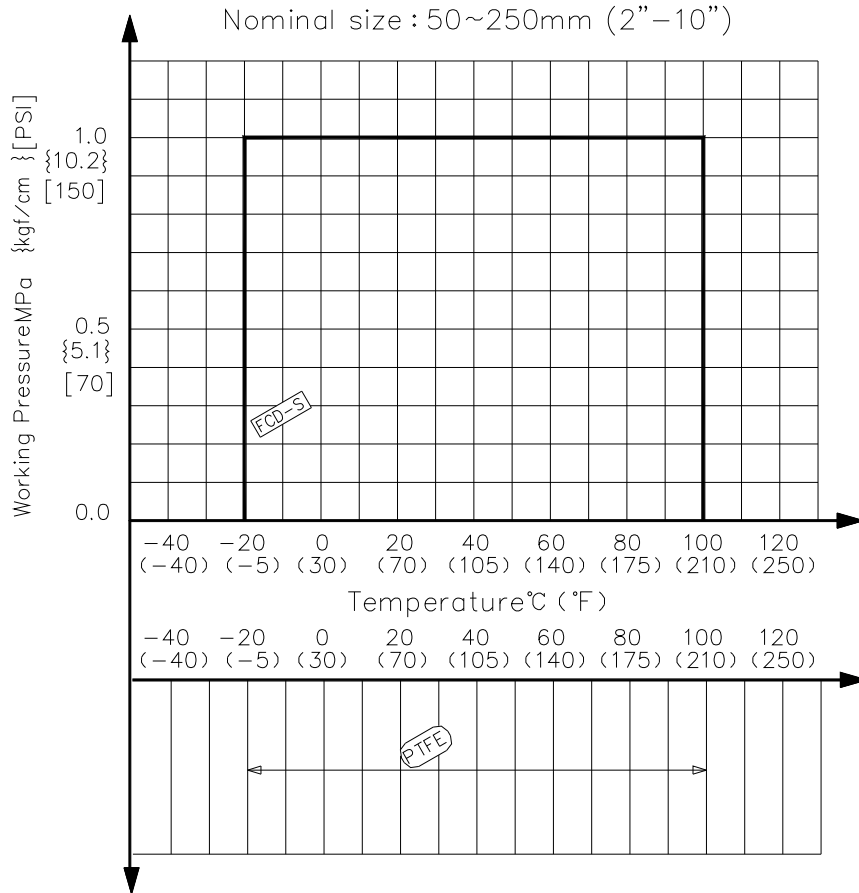
No.	DESCRIPTION
[30]	Limit Switch
[31]	Limit Switch Pushing Plate

Gear Type 50-250mm (2"-10") with Limit Switch Box (TA2-SB2) (Option)



No.	DESCRIPTION
[30]	Limit Switch
[38]	Bracket (A)

(5) Working pressure vs. temperature



(6) Specification of limit switch

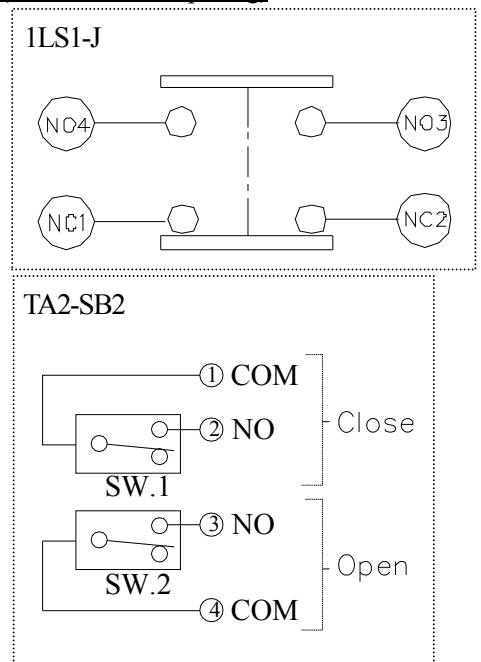
Nominal Size	Type	Type Code	Protection Grade
50-125mm (2"-5")	Lever Type	1LS1-J	IP67
50-250mm (2"-10")	Gear Type	TA2-SB2	IP65

Limit Switch Rating

Type Code	Rate Voltage (V)	Resistive Load (A)	Inductive Load (A)
1LS1-J	AC125	10	6
	AC250	10	6
	DC115	0.8	0.2
	DC230	0.4	0.1
TA2-SB2	AC125	11	7
	AC250	11	7
	DC125	0.5	-
	DC250	0.25	-

Connection Diagram

(At intermediate opening)



Butterfly Valves Type 55 • Type 55IS**ASAHI YUKIZAI CORPORATION**

Distributor

<http://www.asahi-yukizai.co.jp/en/>