

Serial No.	H-V062-E-4
------------	------------

contents

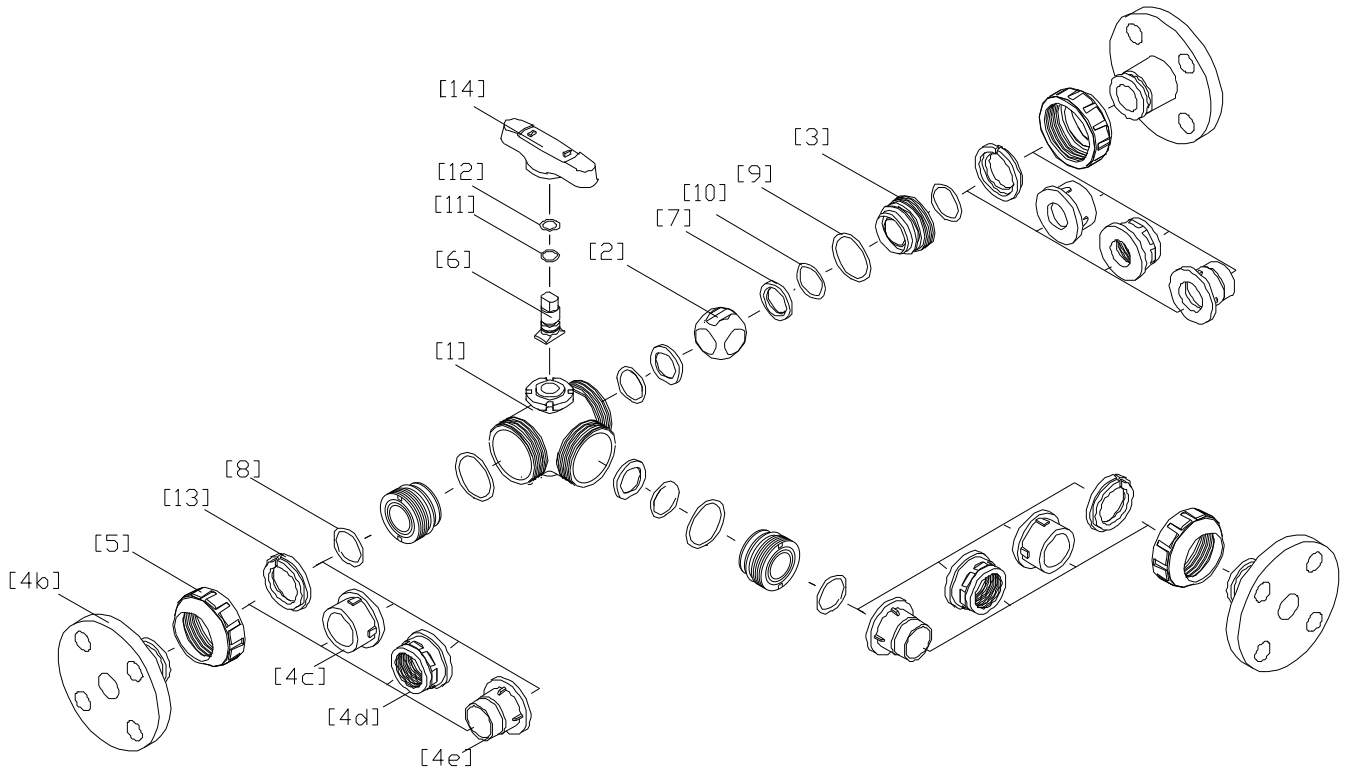
3-Way Ball Valve Type 23H

User's Manual



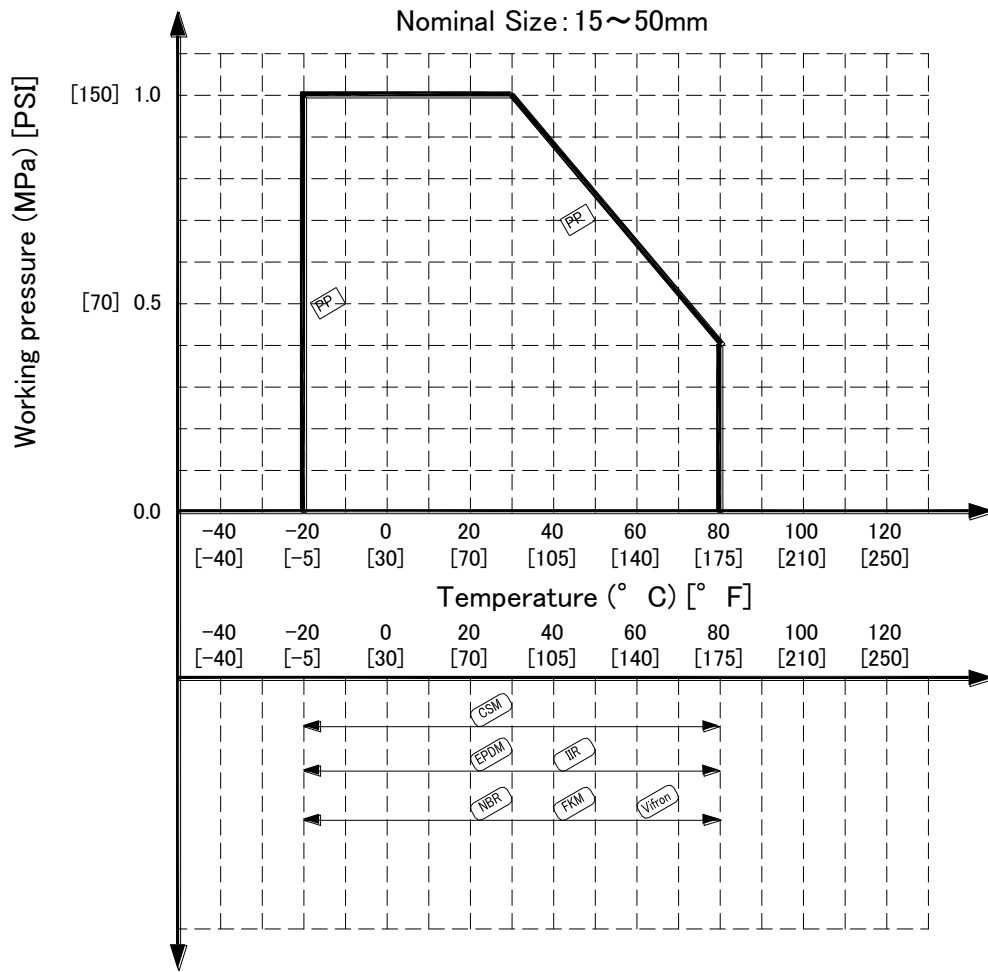
(1) Be sure to read following warranty clauses of our product	1
(2) General operating instructions	2
(3) General instruction for transportation, unpacking and storage	3
(4) Name of parts	4
(5) Working pressure vs. temperature	5
(6) Installation procedure	6
(7) Operating procedure	10
(8) Method of adjusting face pressure between ball and seat	11
(9) Disassembling method for replacing parts	12
(10) Inspection items	13
(11) Troubleshooting	13
(12) Handling of residual and waste materials	13

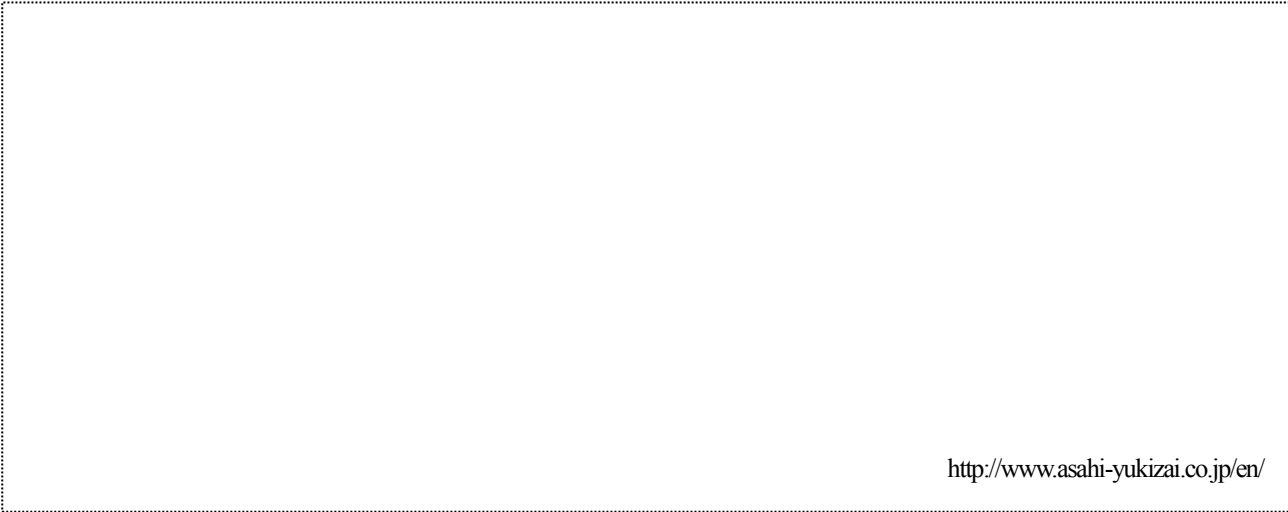
(4) Name of parts



No.	DESCRIPTION	No.	DESCRIPTION
[1]	Body	[7]	Seat
[2]	Ball	[8]	O-ring (A)
[3]	Carrier	[9]	O-ring (B)
[4c]	End connector (Socket End)	[10]	O-ring (C)
[4d]	End connector (Threaded End)	[11]	O-ring (D)
[4e]	End connector (Spigot End)	[12]	O-ring (E)
[5]	Union nut	[14]	Handle
[6]	Stem		

(5) Working pressure vs. temperature



3-Way Ball Valves Type 23**ASAHI YUKIZAI CORPORATION**

<http://www.asahi-yukizai.co.jp/en/>